

Service Manual for L1 and L2

Nokia 206 Dual SIM/2060, Nokia 206 RM-872, RM-873

Key features

- S40 Operating system
- Dual SIM Easy SWAP (RM-872)
- Big and bright screen
- Powerful battery
- 2G Connections with background GPRS

Version 1.0

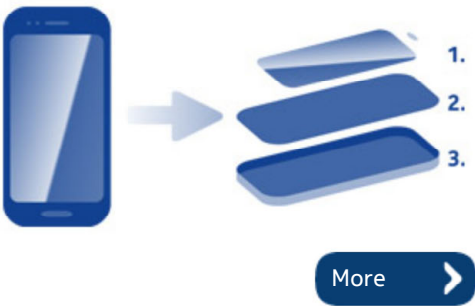
Check the repair policy before performing any mechanical repair on Service Level 1&2!



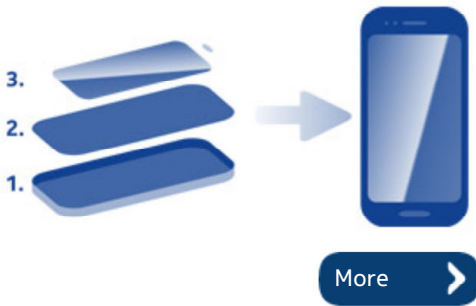
Exploded view



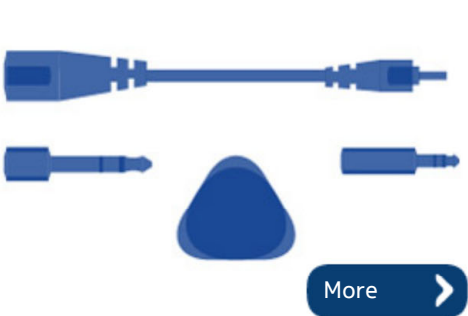
Disassembly steps



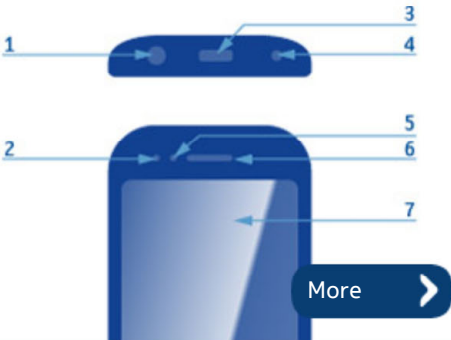
Assembly hints



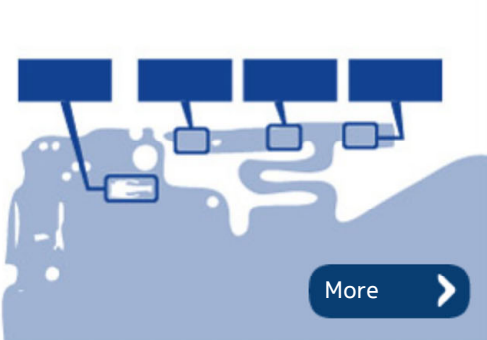
Service devices



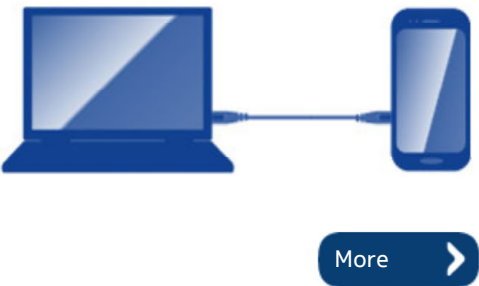
Product controls and interfaces

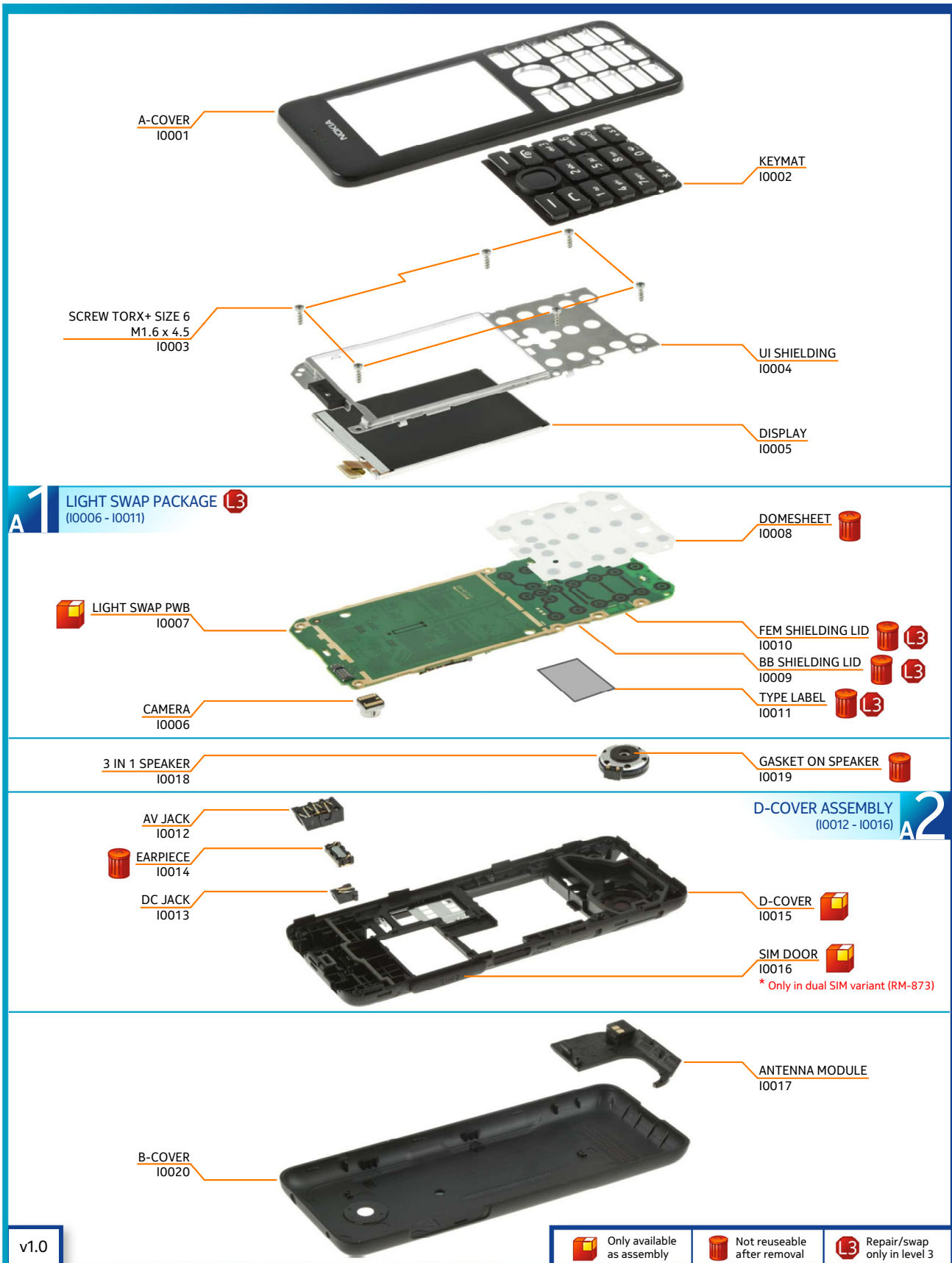


Solder components



Service concept





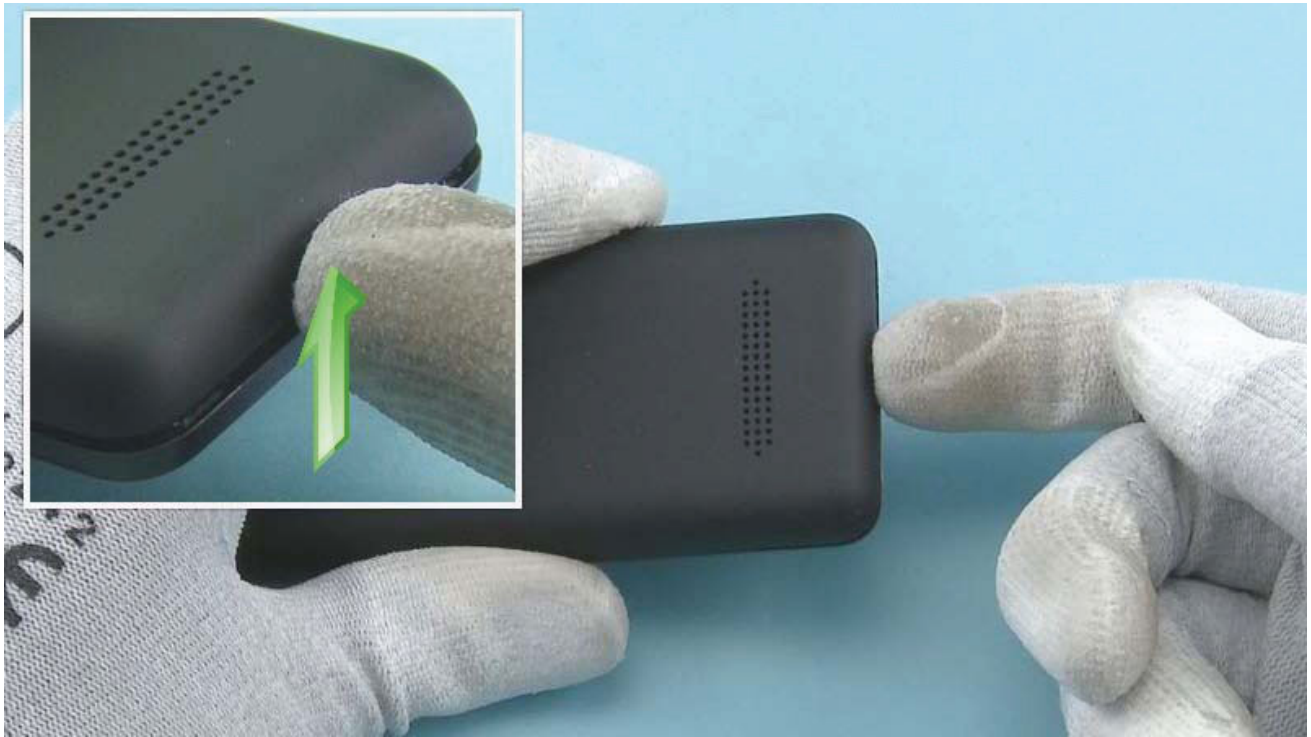


For disassembling you need the Nokia Standard toolkit version 2. You will also need an AV plug, a DC plug and the camera removal tool SS-276.

Note that the disassembly instructions are made with the dual SIM variant (RM-872).



Protect the A-COVER with protective film.



Release the B-COVER by using the release notch on the bottom of the device.



Remove the B-COVER.



To remove the A-COVER, first release the clips from the bottom of the device with the SRT-6.



Then release the clips from the right side by sliding the SRT-6 along the side.



Then release the clips from the left side by sliding the SRT-6 along the side.



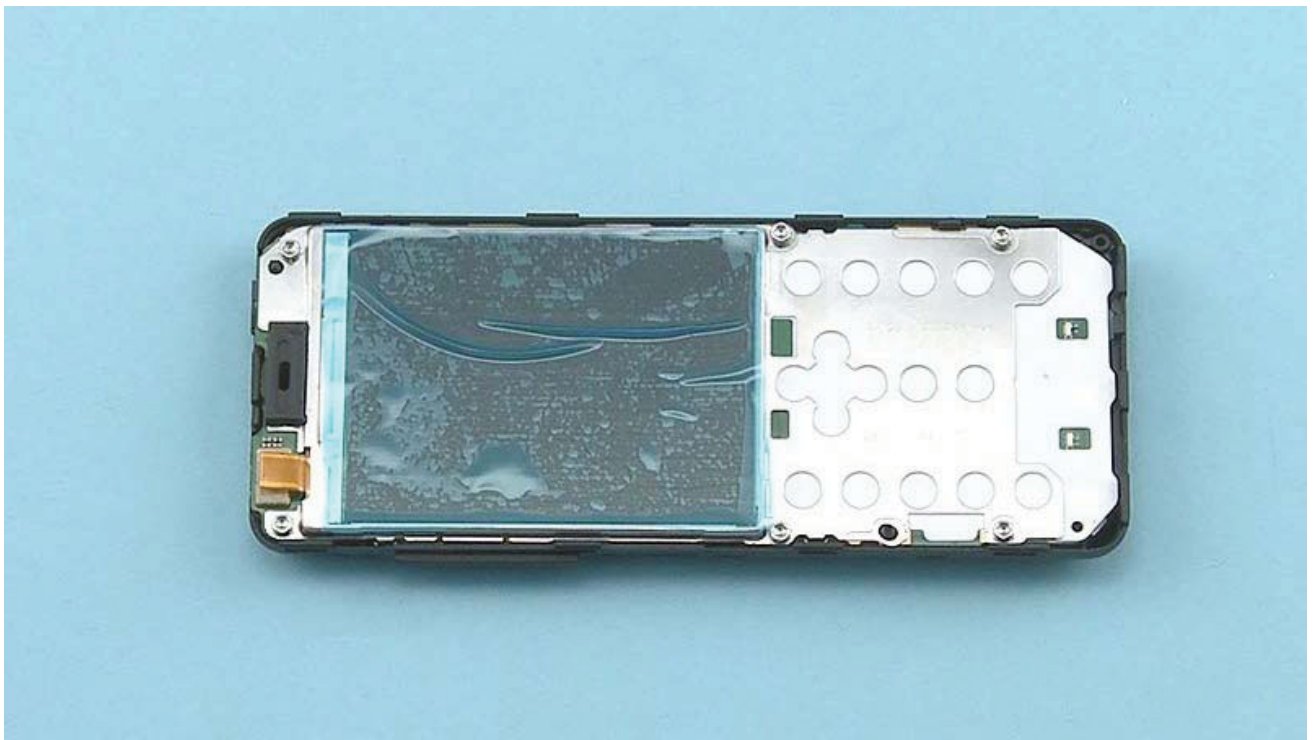
Then release the top side.



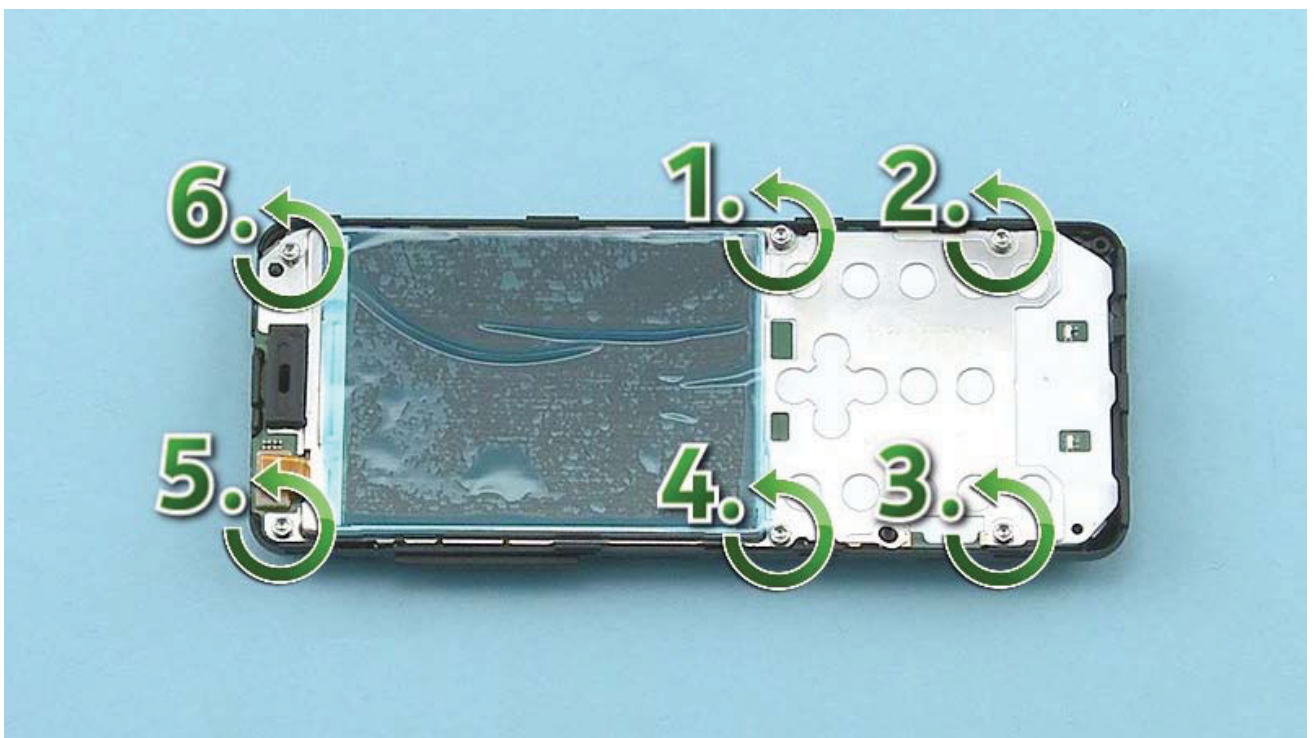
Remove the A-COVER.



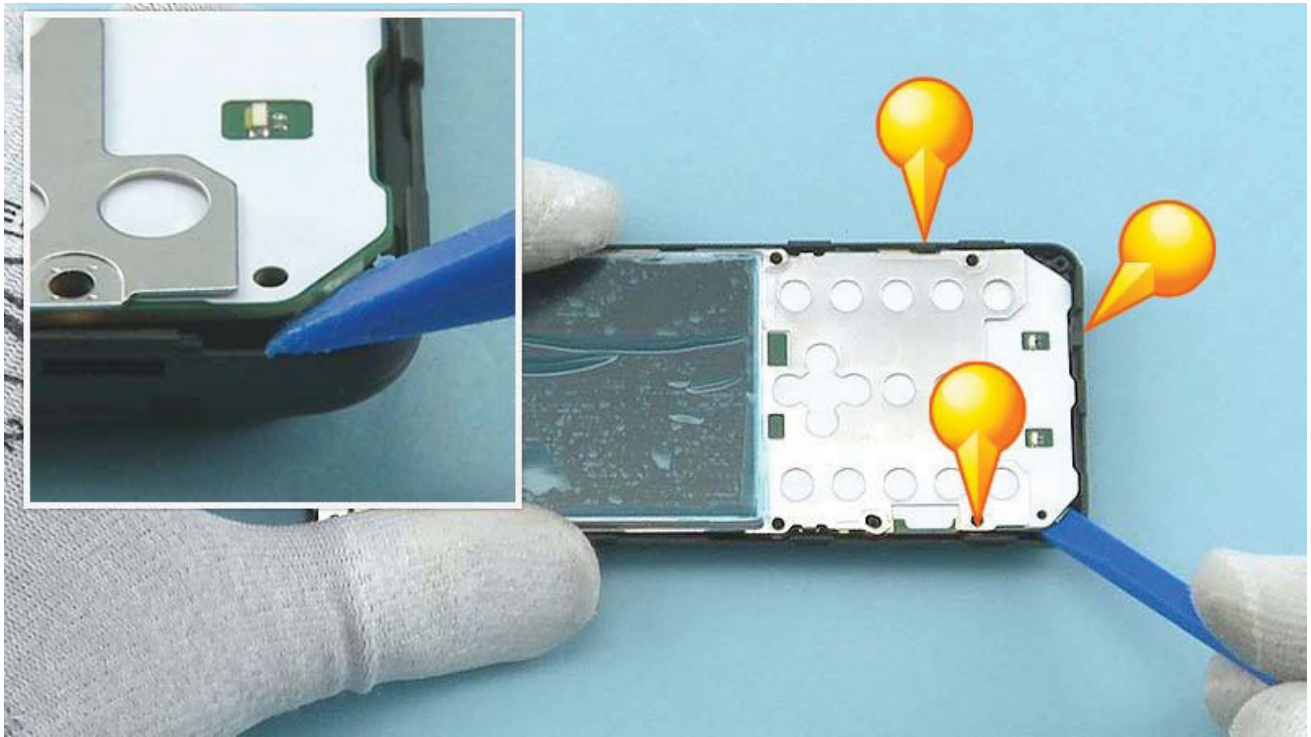
Remove the KEYMAT.



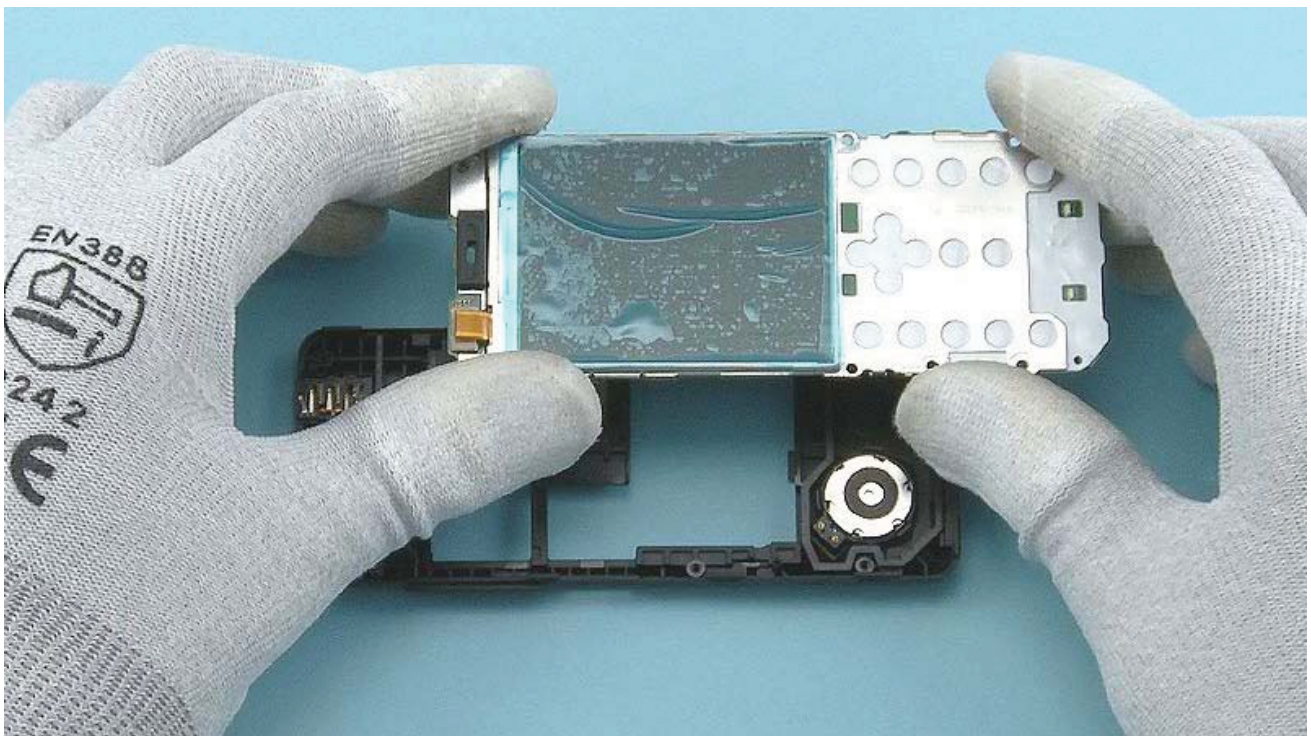
Protect the DISPLAY with protective film.



Unscrew the six Torx+ size 6 screws in the order shown.



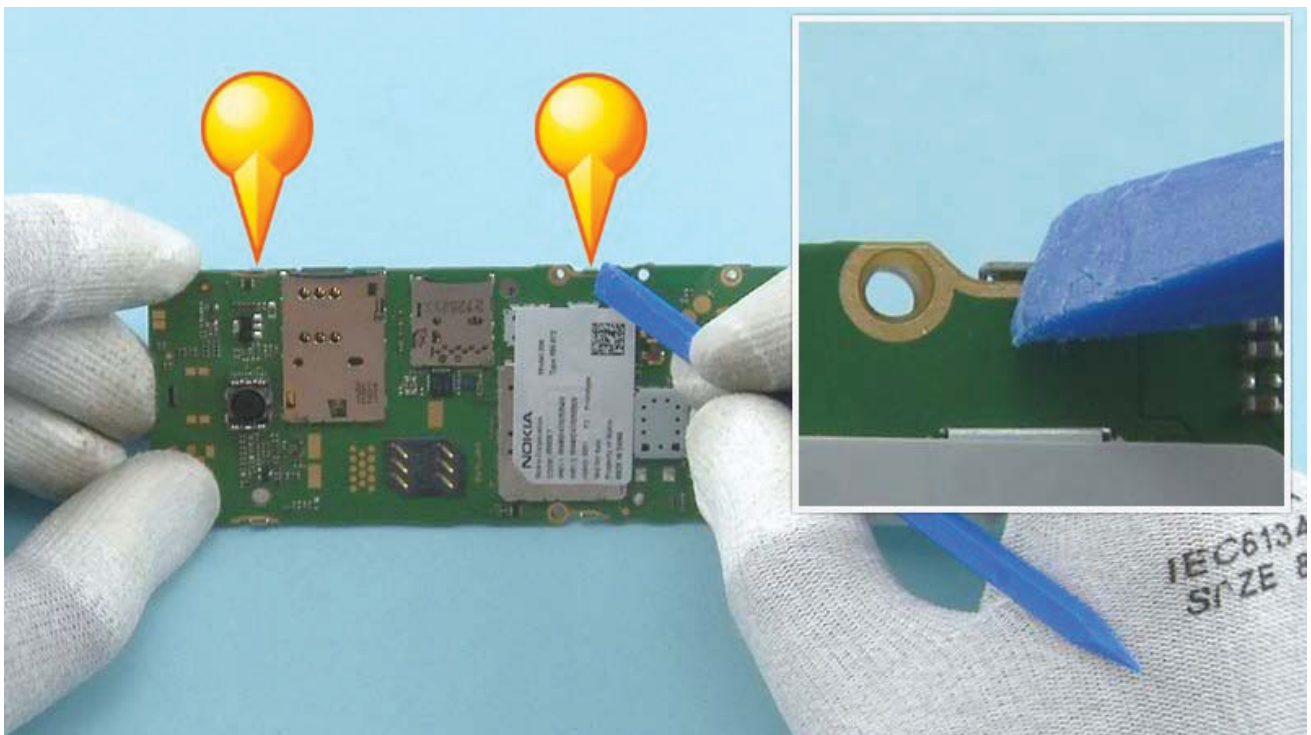
To remove the ENGINE BOARD, release the three shown clips with the SS-93.



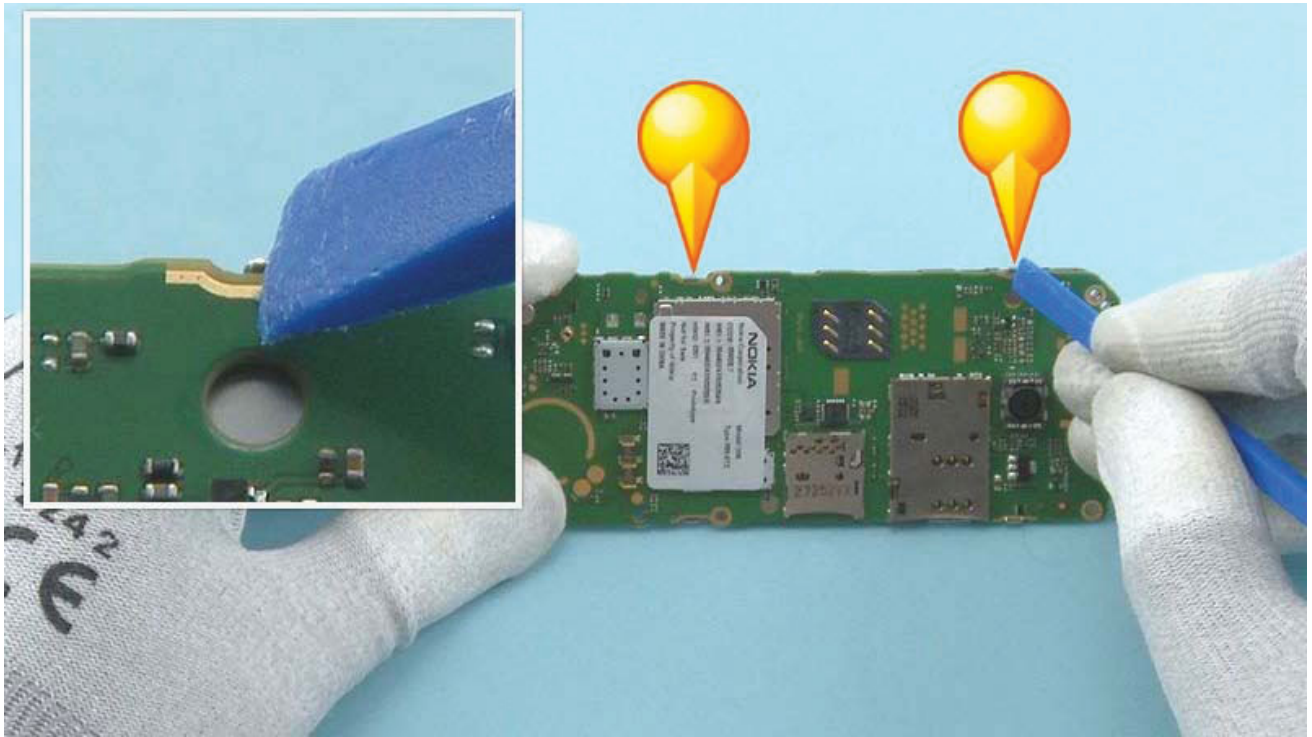
Lift up and remove the ENGINE BOARD.



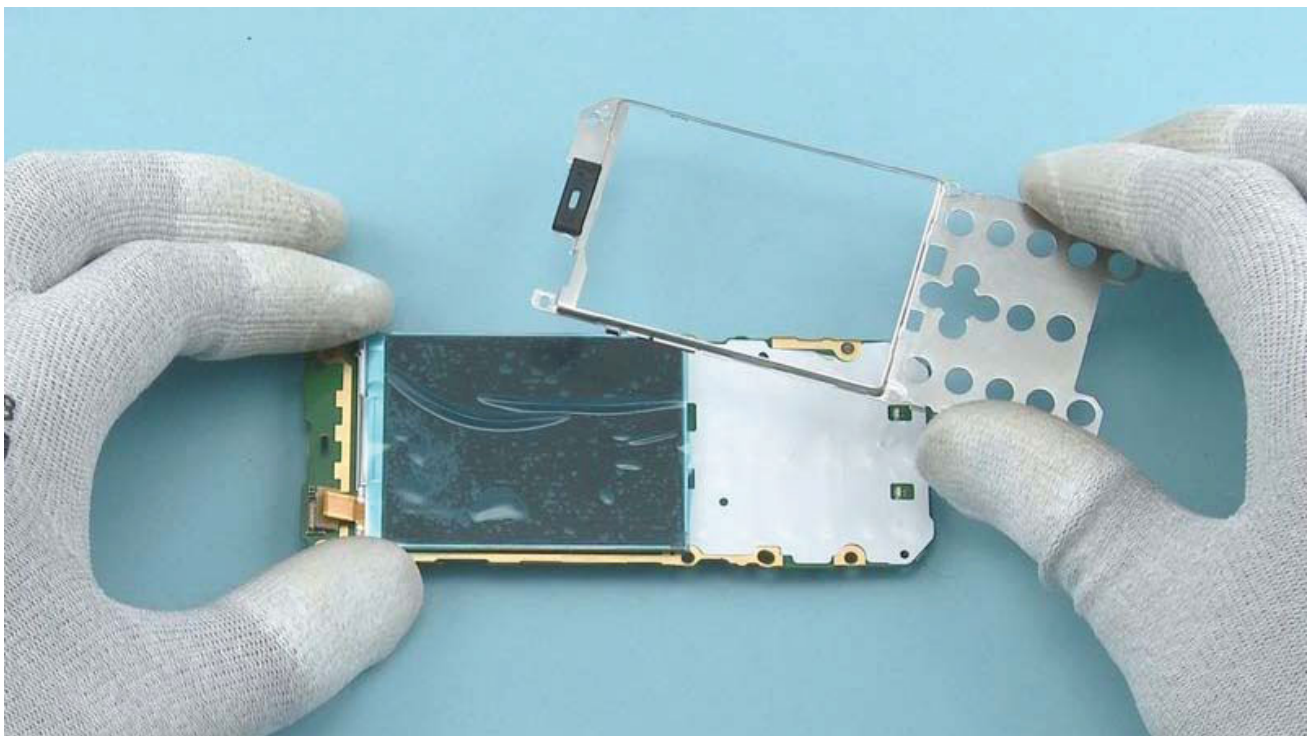
Open the DISPLAY connector with the SS-93. Be careful not to damage the connector or any components nearby.



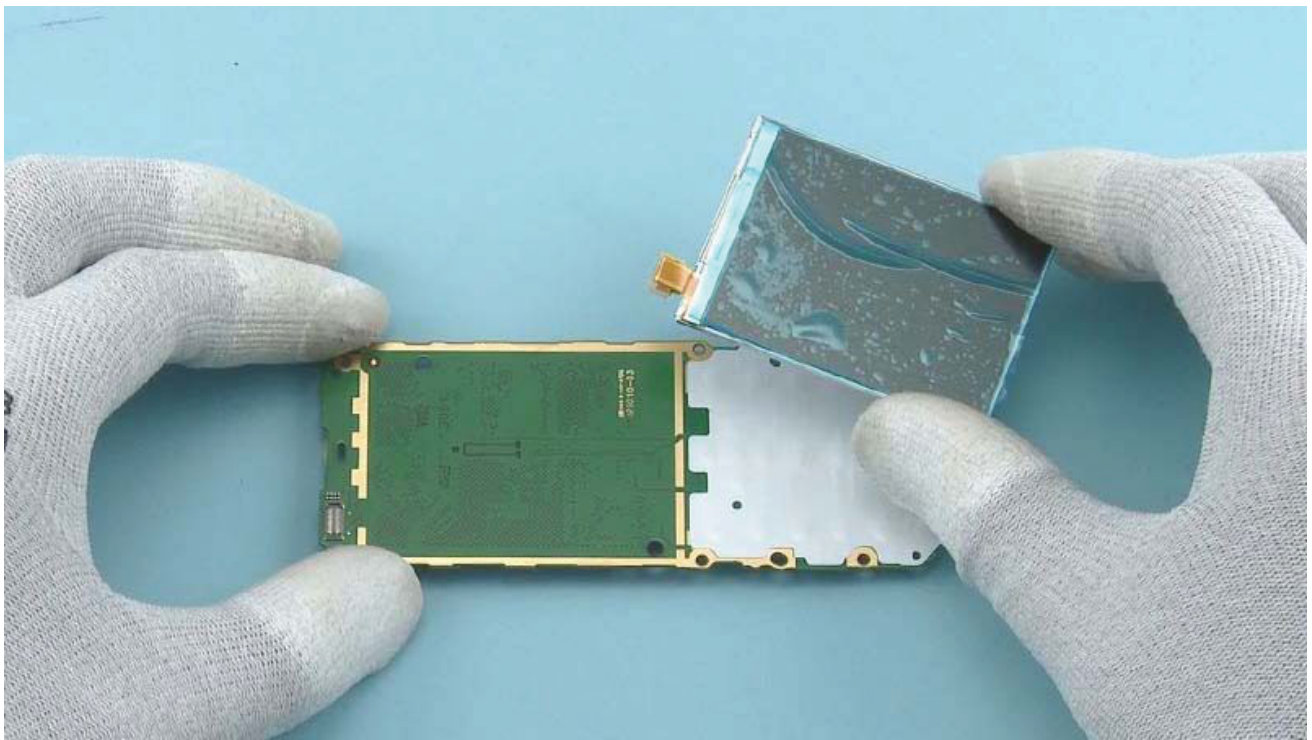
To remove the UI SHIELDING, release the two clips from the shown side.



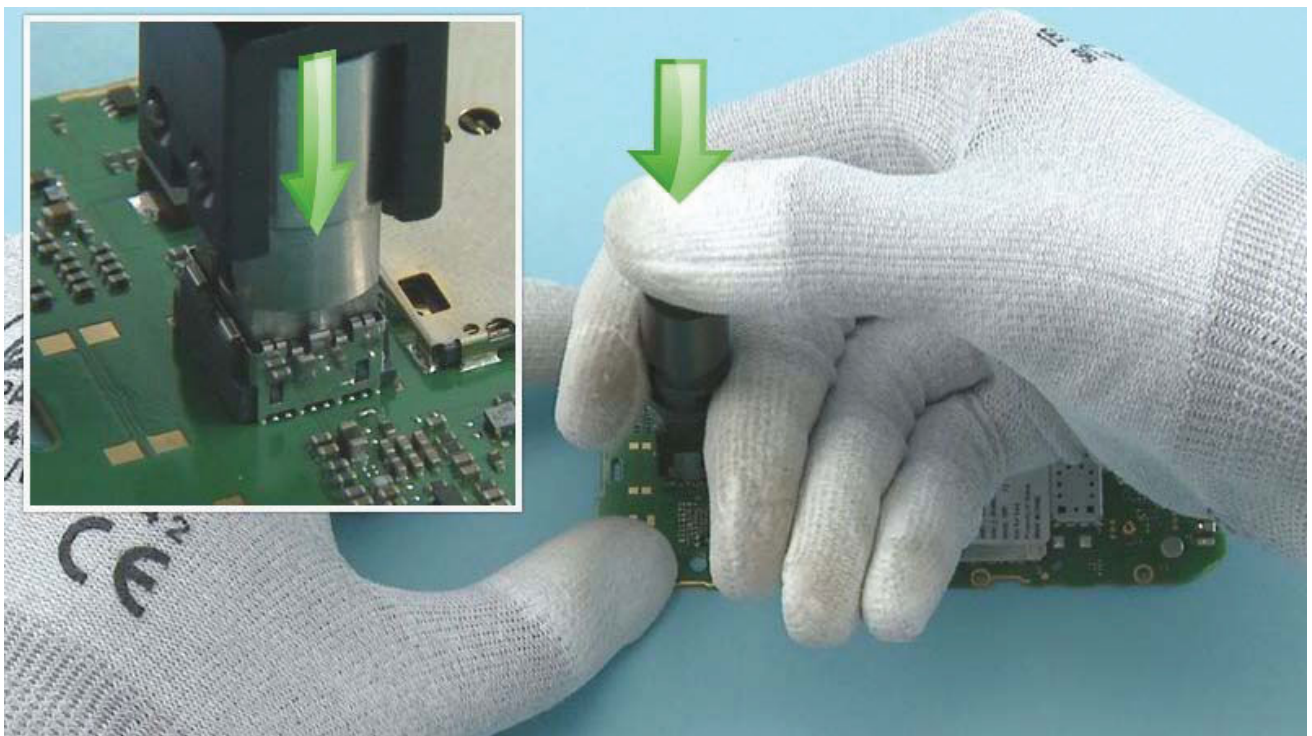
Release also the two clips from the other side.



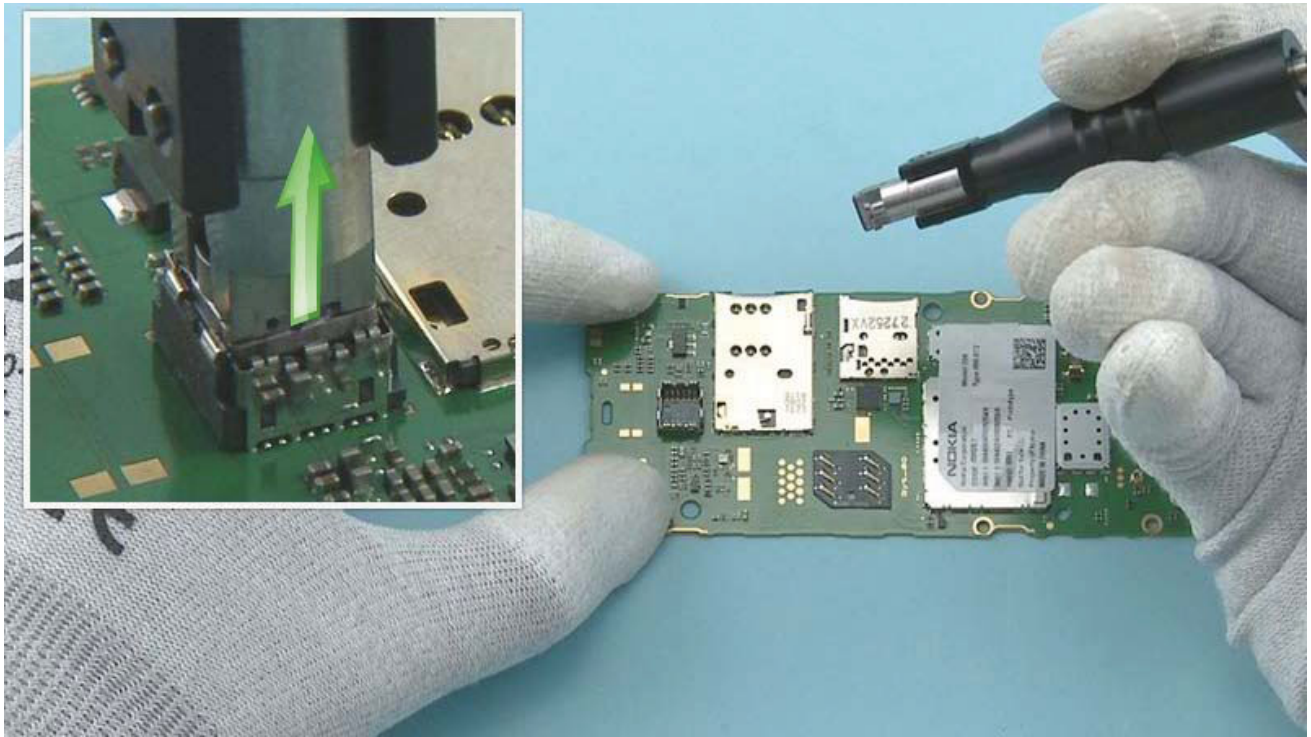
Lift up and remove the UI SHIELDING.



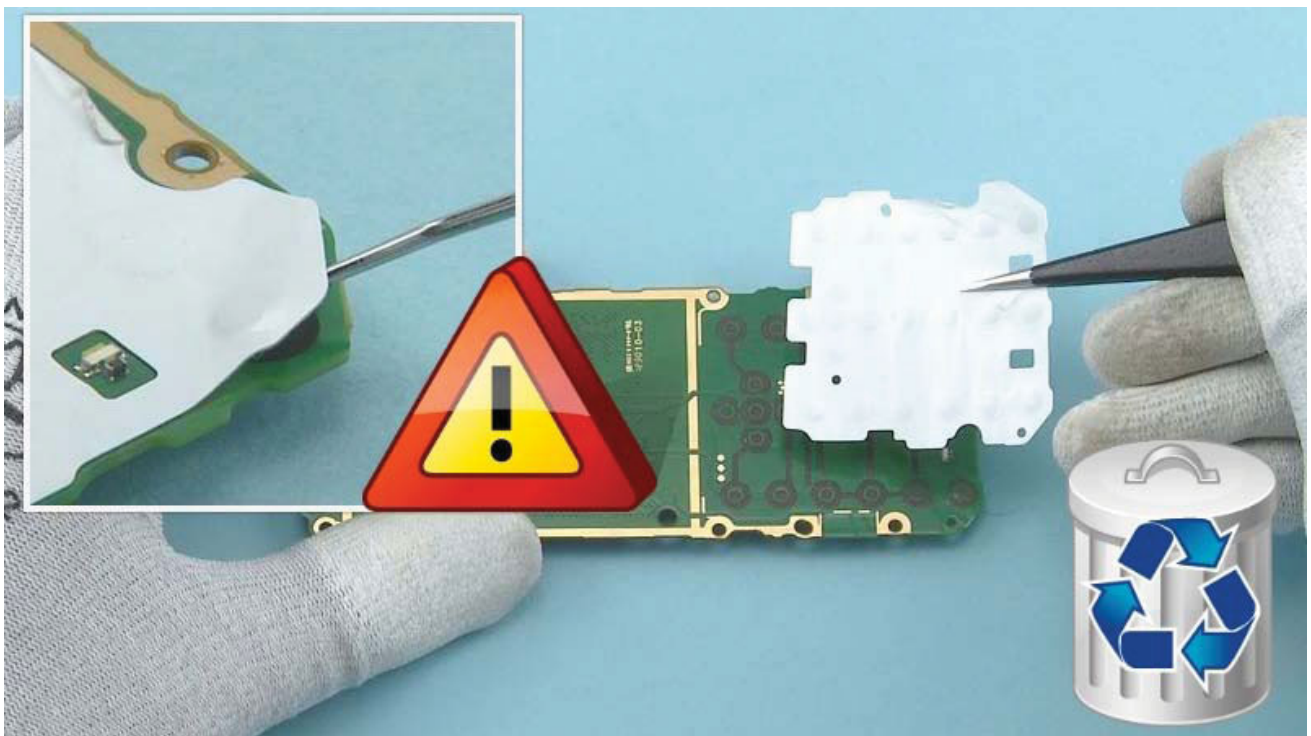
Remove the DISPLAY.



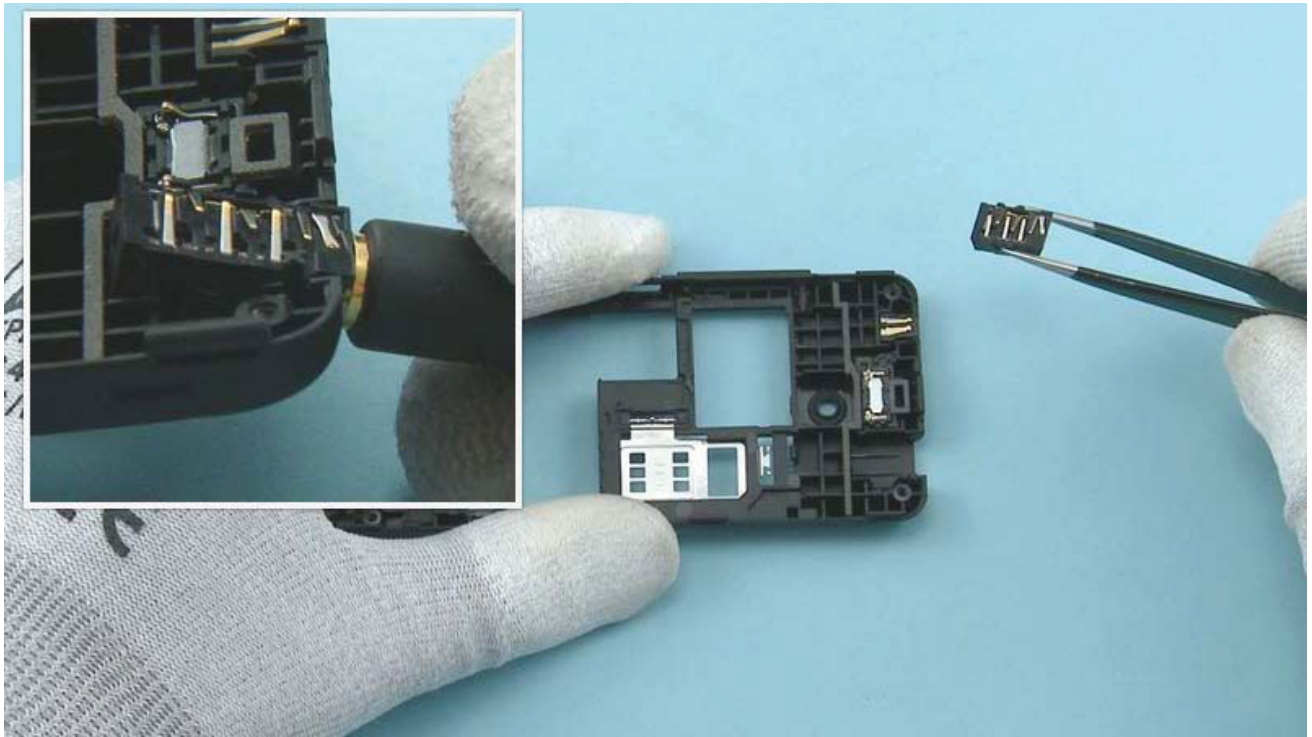
Place the SS-276 camera removal tool on top of the CAMERA and press down until the CAMERA retaining clips are released. Then hold down the button on top of the SS-276...



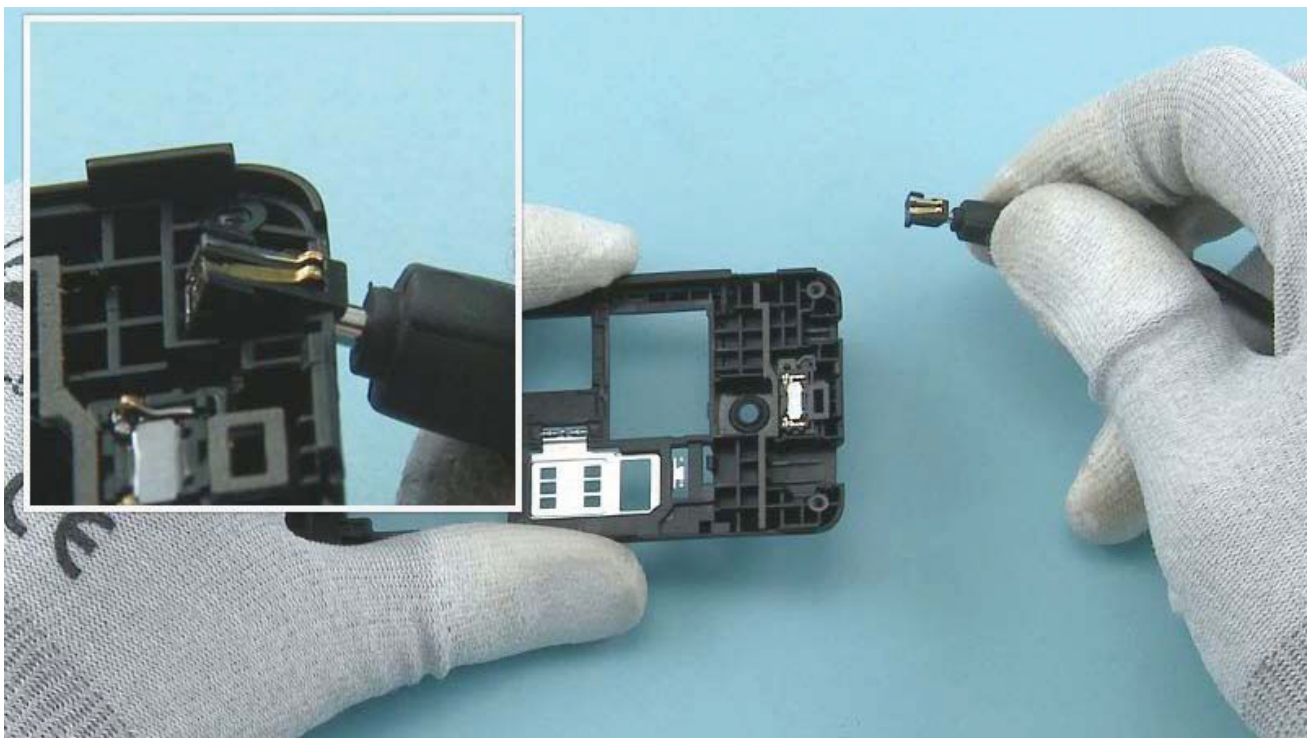
...And lift up the CAMERA.



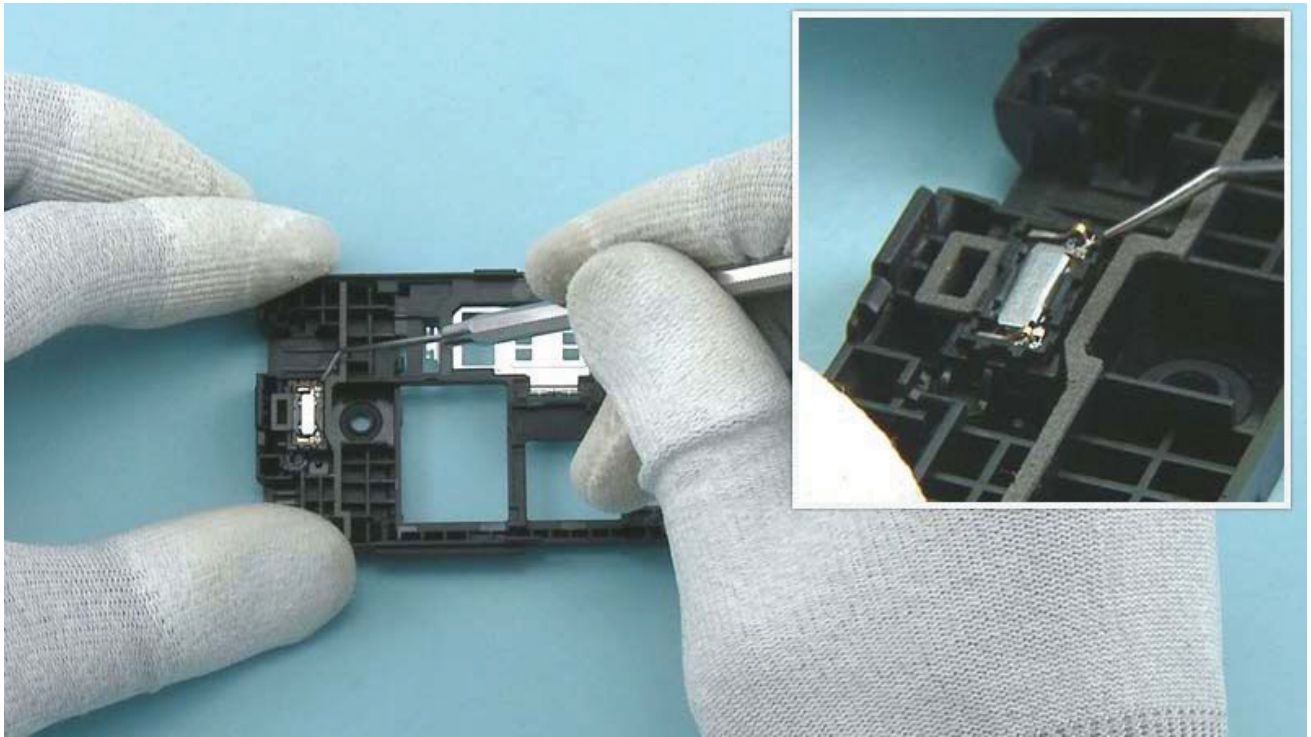
Release one corner of the DOMESHEET with the dental tool. Be careful not to injure yourself with the sharp end of the dental tool. Peel off the DOMESHEET with tweezers. Do not use it again. Discard it.



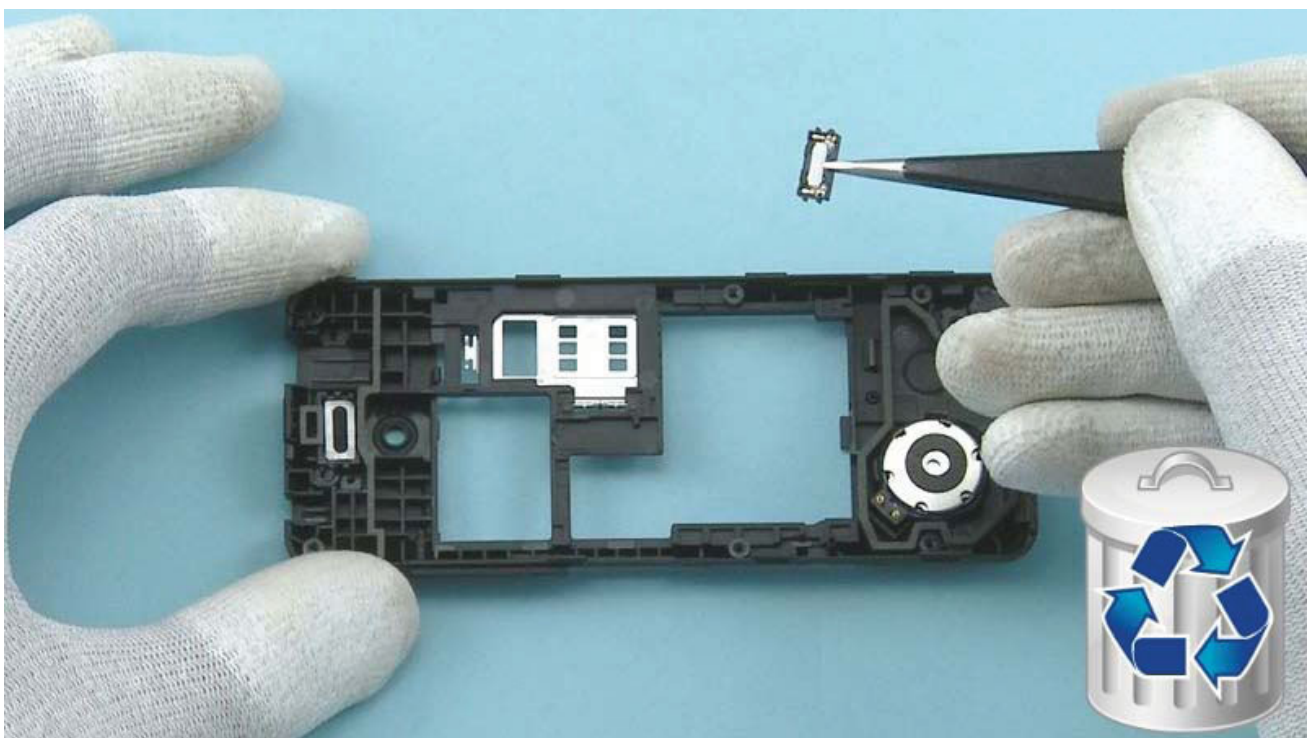
Release the AV JACK with an AV plug and remove it with tweezers.



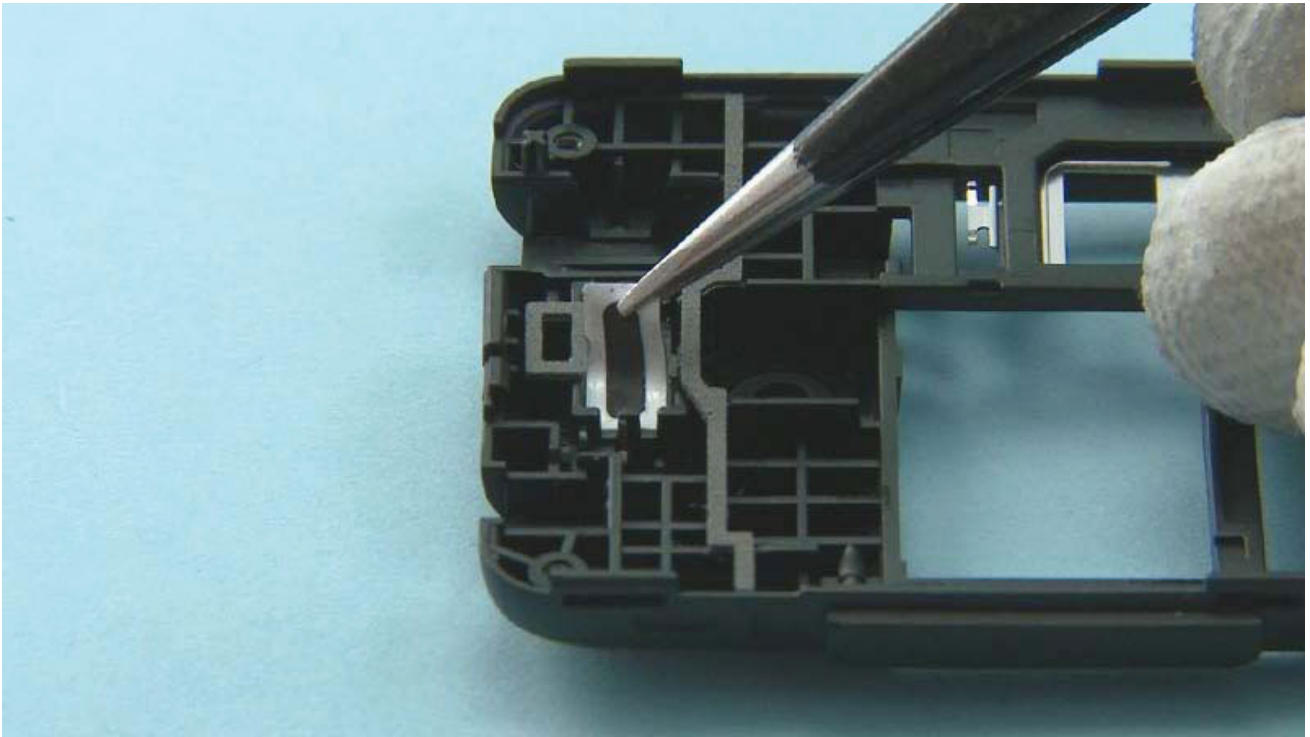
Release the DC JACK with a DC plug and remove it.



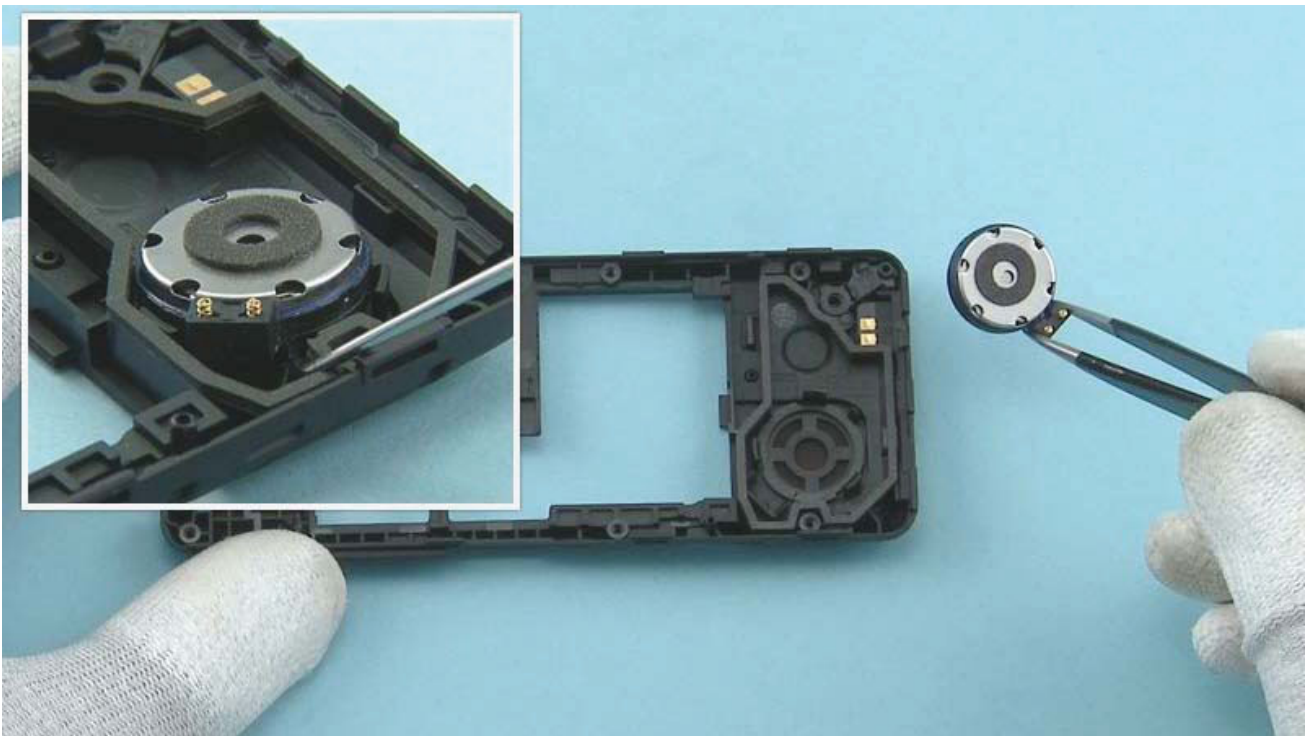
Release the EARPICEE with the dental tool.



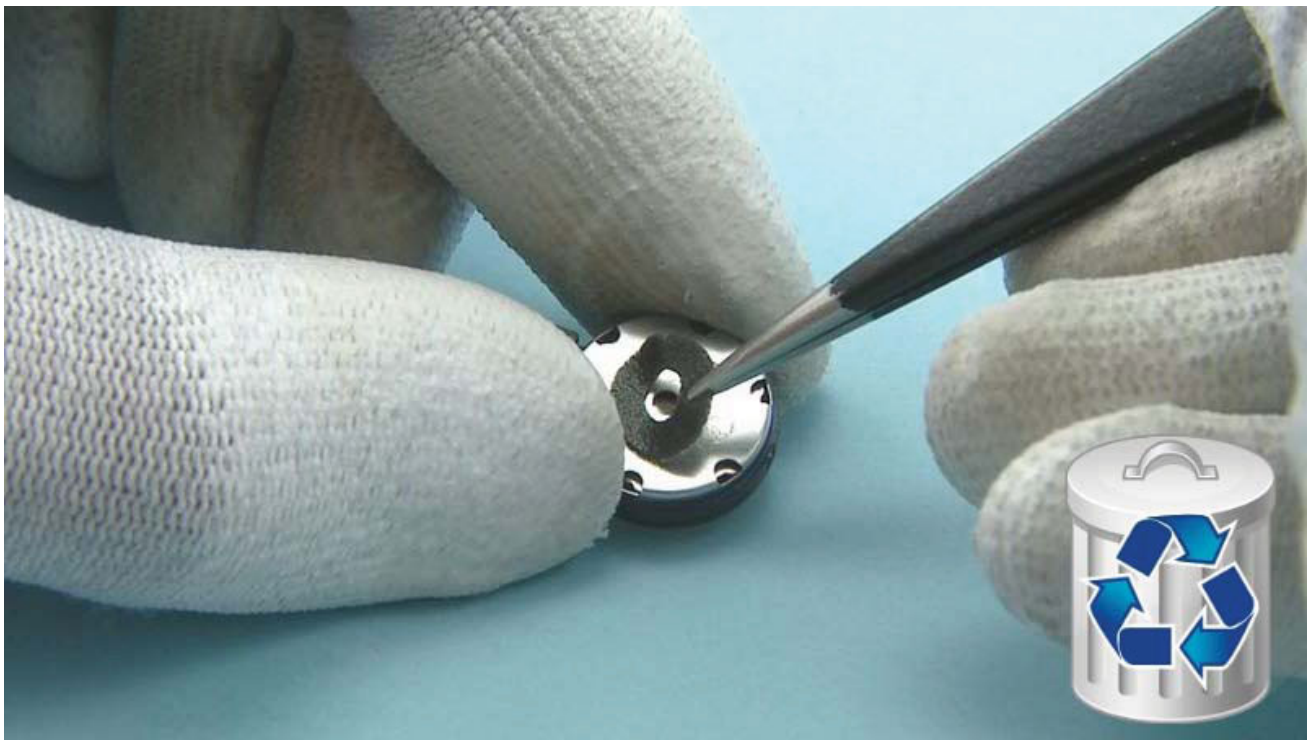
Remove the EARPICEE with tweezers. Do not use it again. Discard it.



If the EARPIECE adhesive remains in the D-COVER, peel it off.



Release the 3 IN 1 SPEAKER with the dental tool and remove it with tweezers.



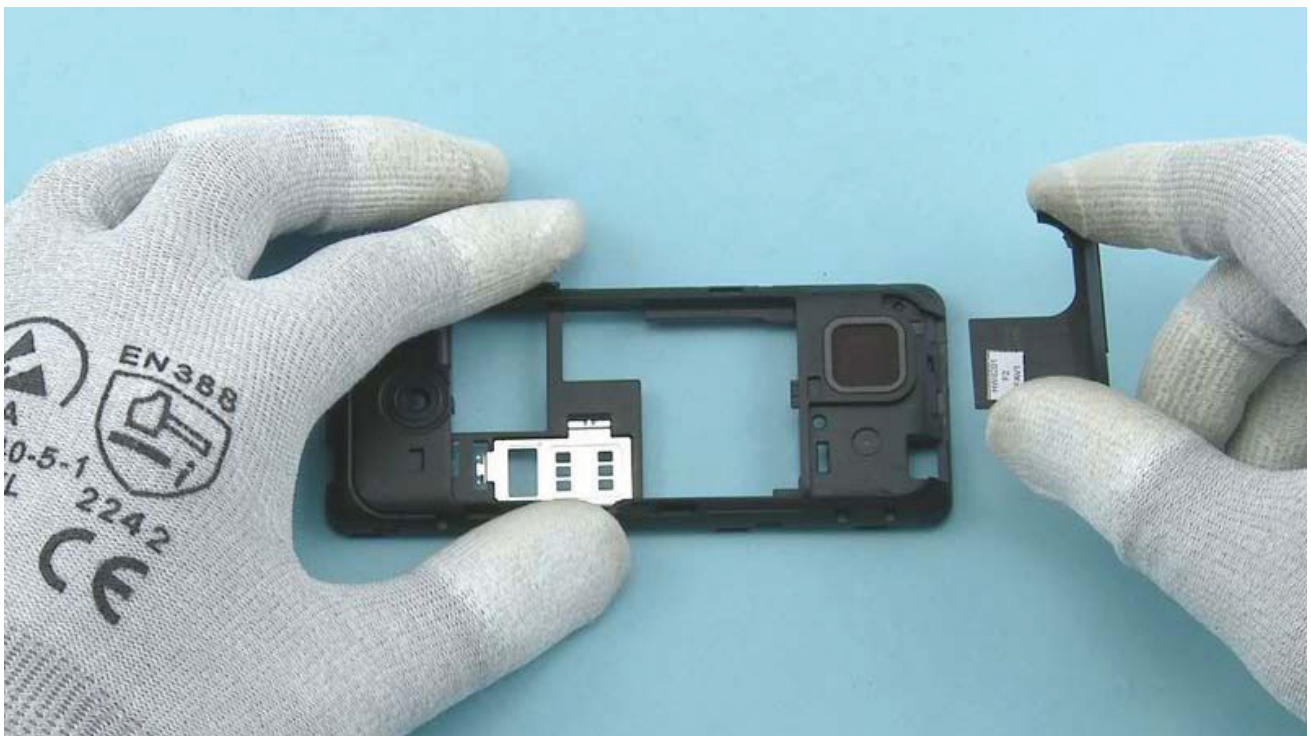
Peel off the GASKET on top of the SPEAKER. Do not use it again. Discard it.



To remove the ANTENNA MODULE, use the SRT-6 to push down the shown clip.



Then release the ANTENNA MODULE from the side and top with the SRT-6.

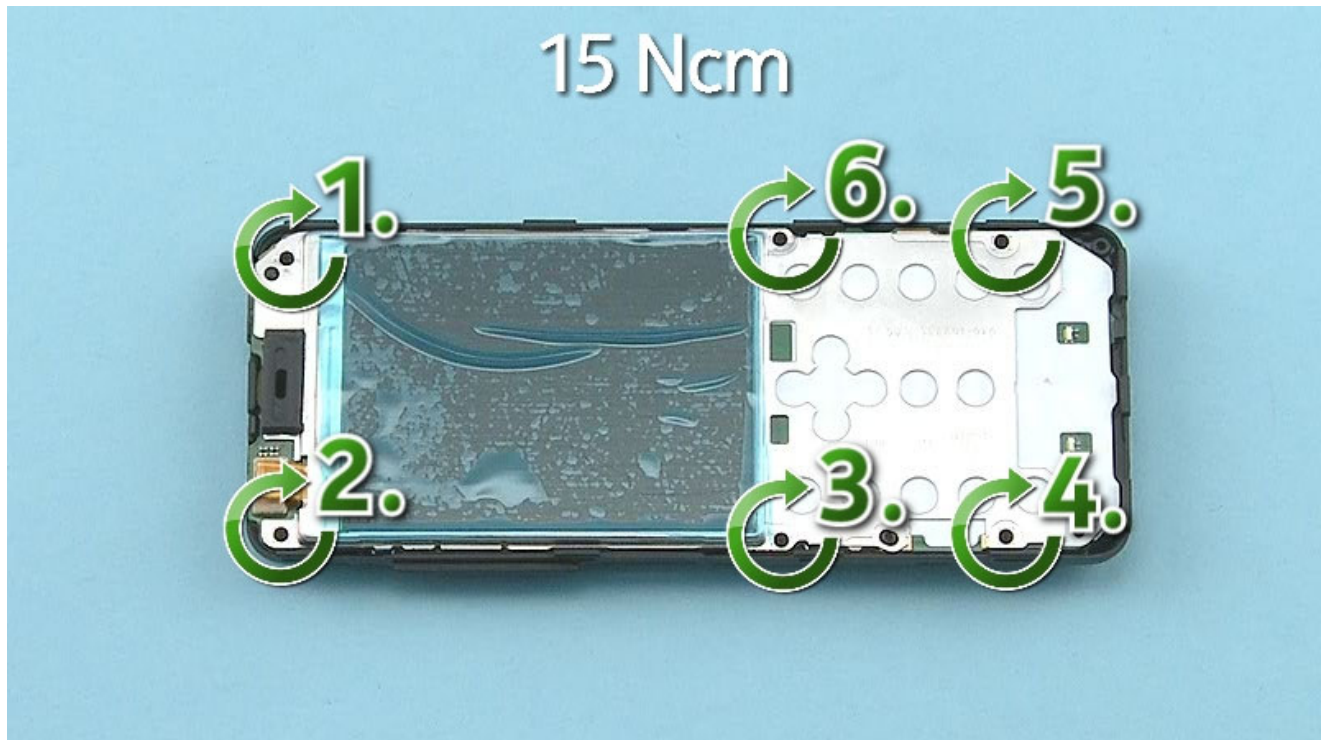


Remove the ANTENNA MODULE.



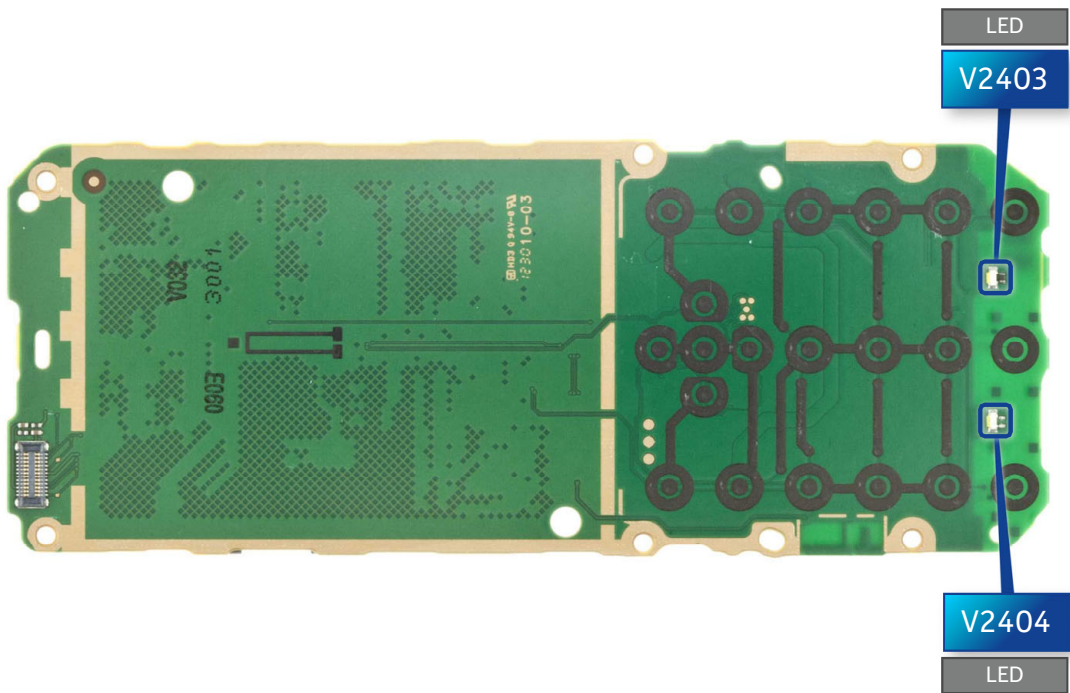
The Nokia 206 Dual SIM disassembly procedure is complete.

-END OF DISASSEMBLY-

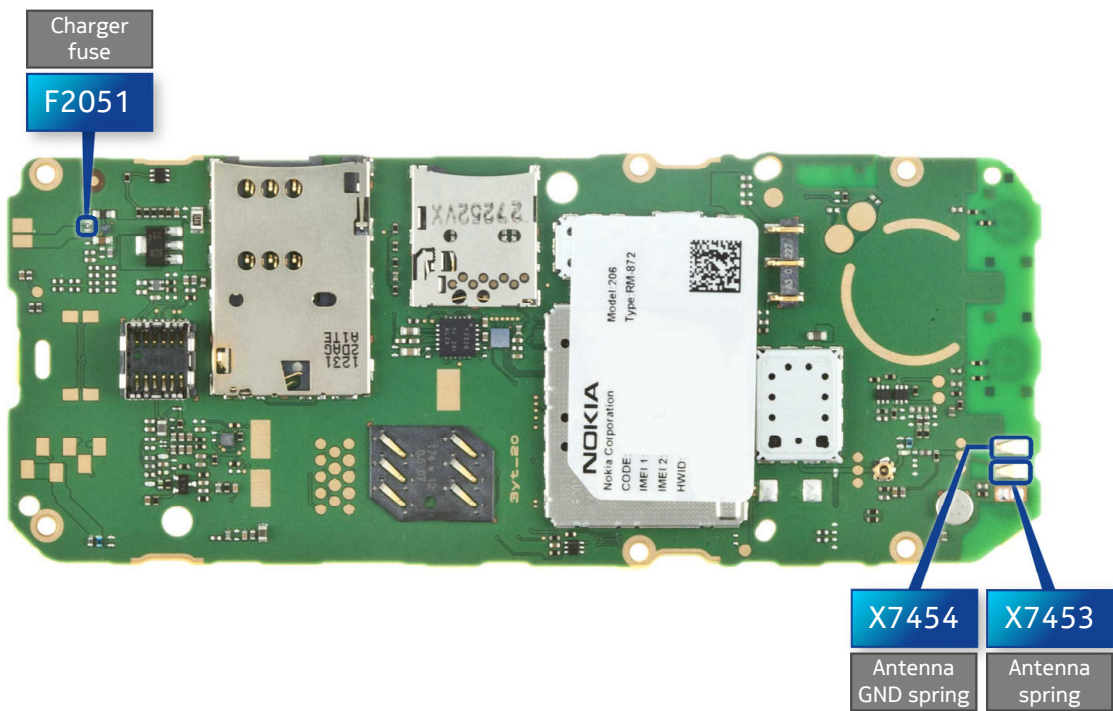


Fasten the six Torx+ size 6 screws in the order shown to the torque of 15 Ncm.

TOP



BOTTOM



v1.0



CA-101 Service cable



AC-11 Travel charger



SS-276 Camera removal tool



BL-4U

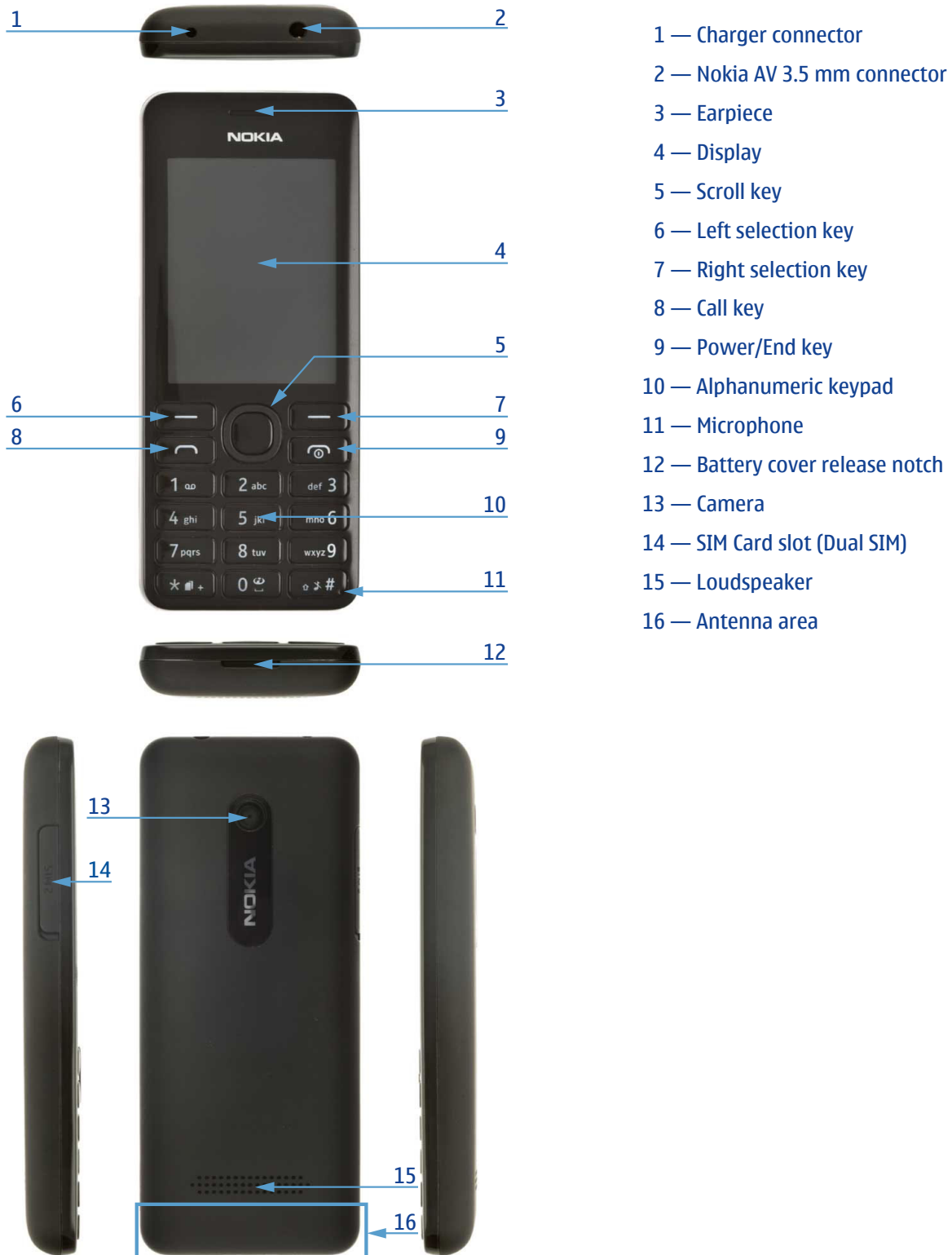


Flash Adapter SF-299R



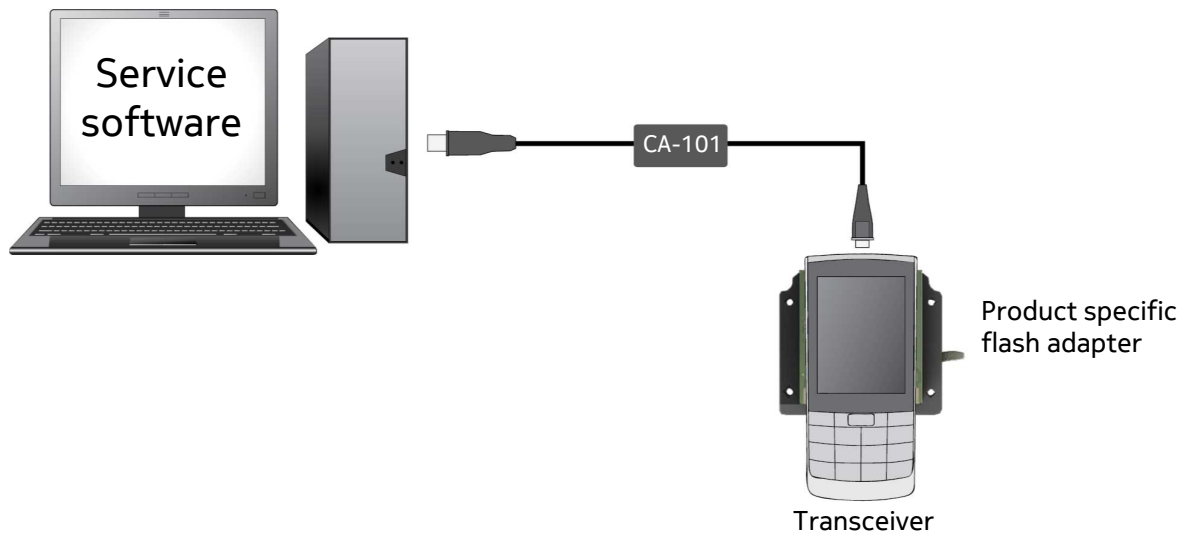
Nokia Standard Toolkit (v2)

For more information, refer to the Service Bulletin (SB-011) on Nokia Online. Supplier or manufacturer contacts for tool re-order can be found in "Recommended service equipment" document on Nokia Online.



v1.0

Flashing concept



Version	Date	Description
1.0	07.12.2012	First published version