

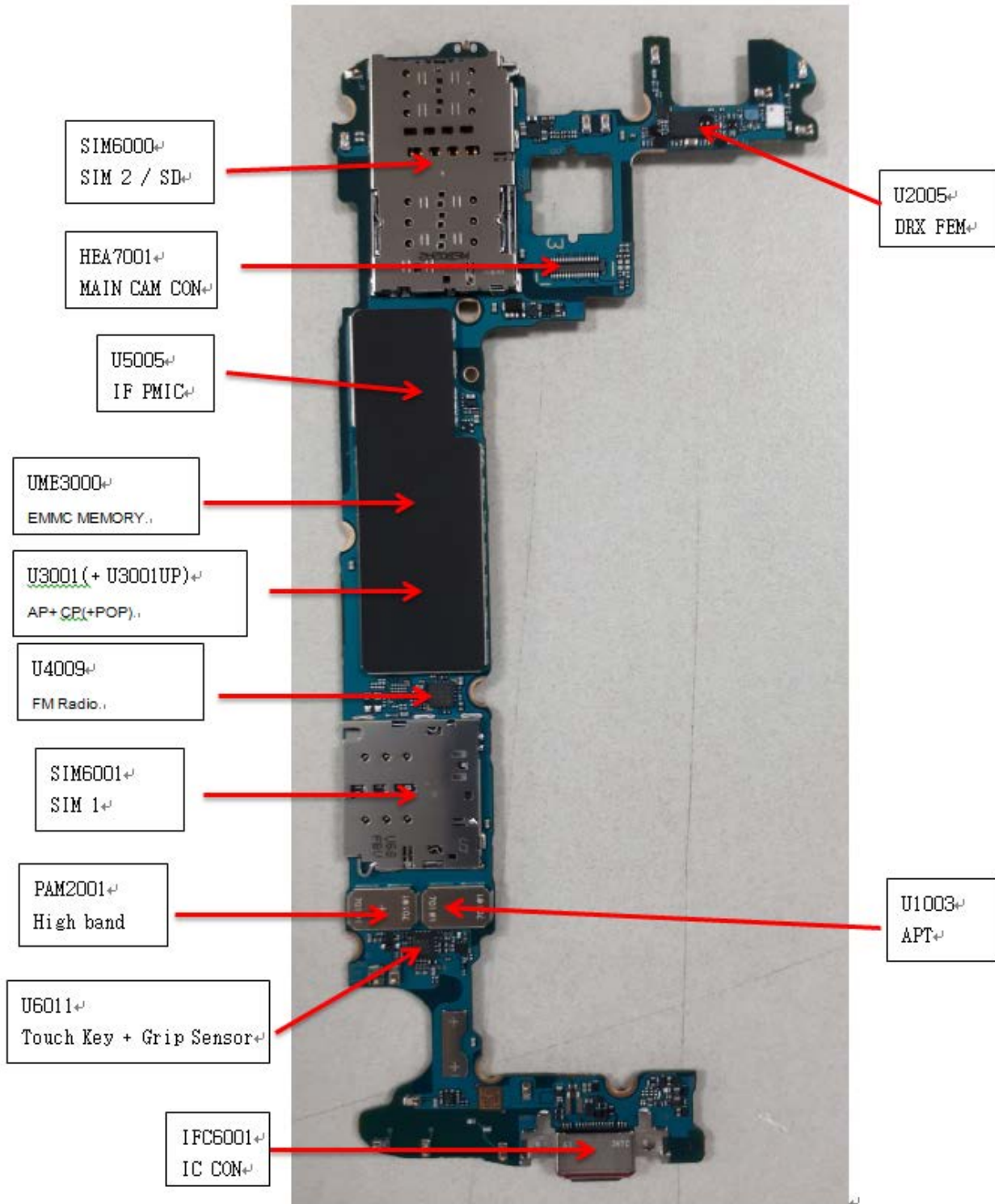
---

## 8. Level 3 Repair

---

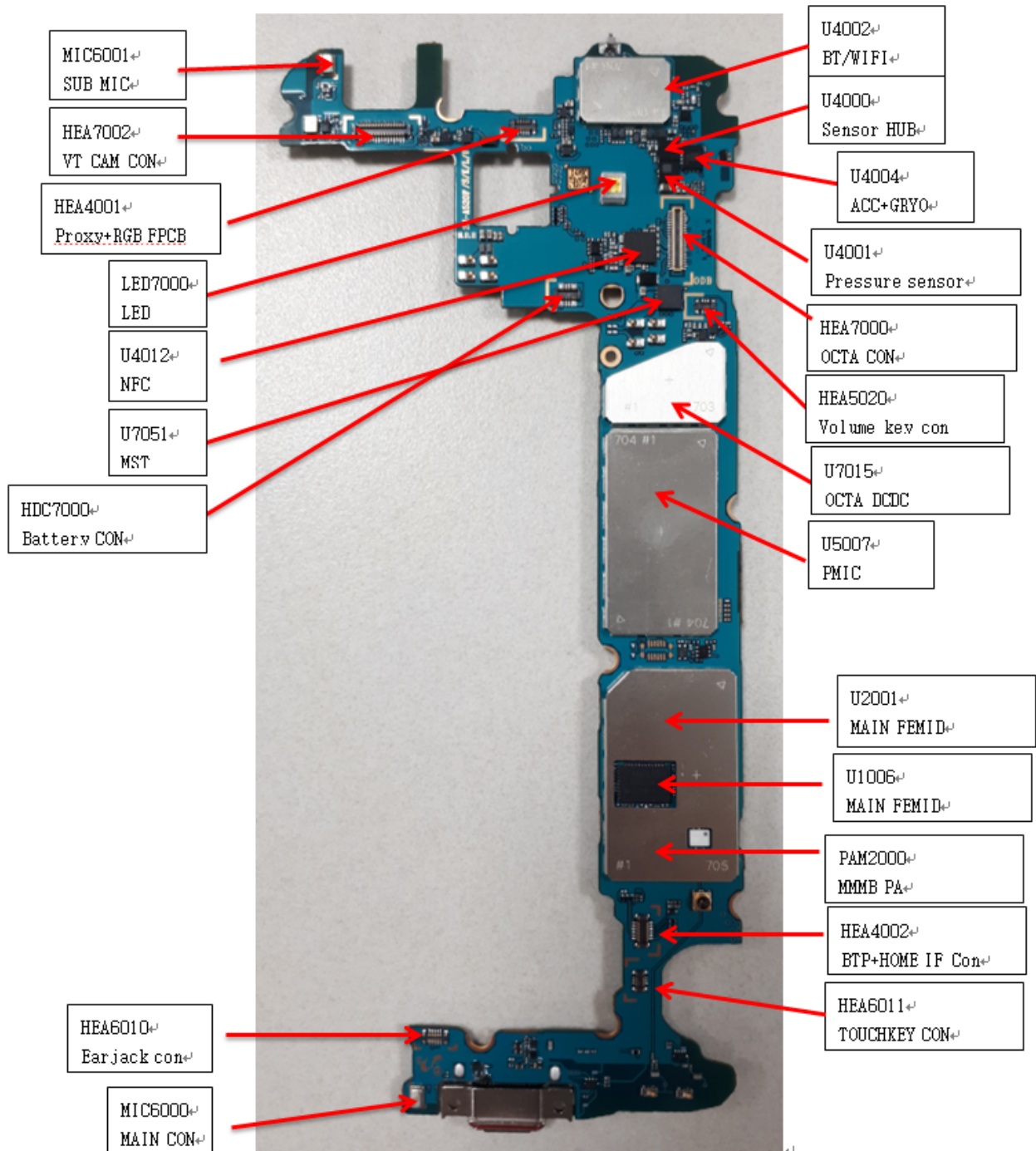
### 8-1. Components Layout

#### PBA TOP Side

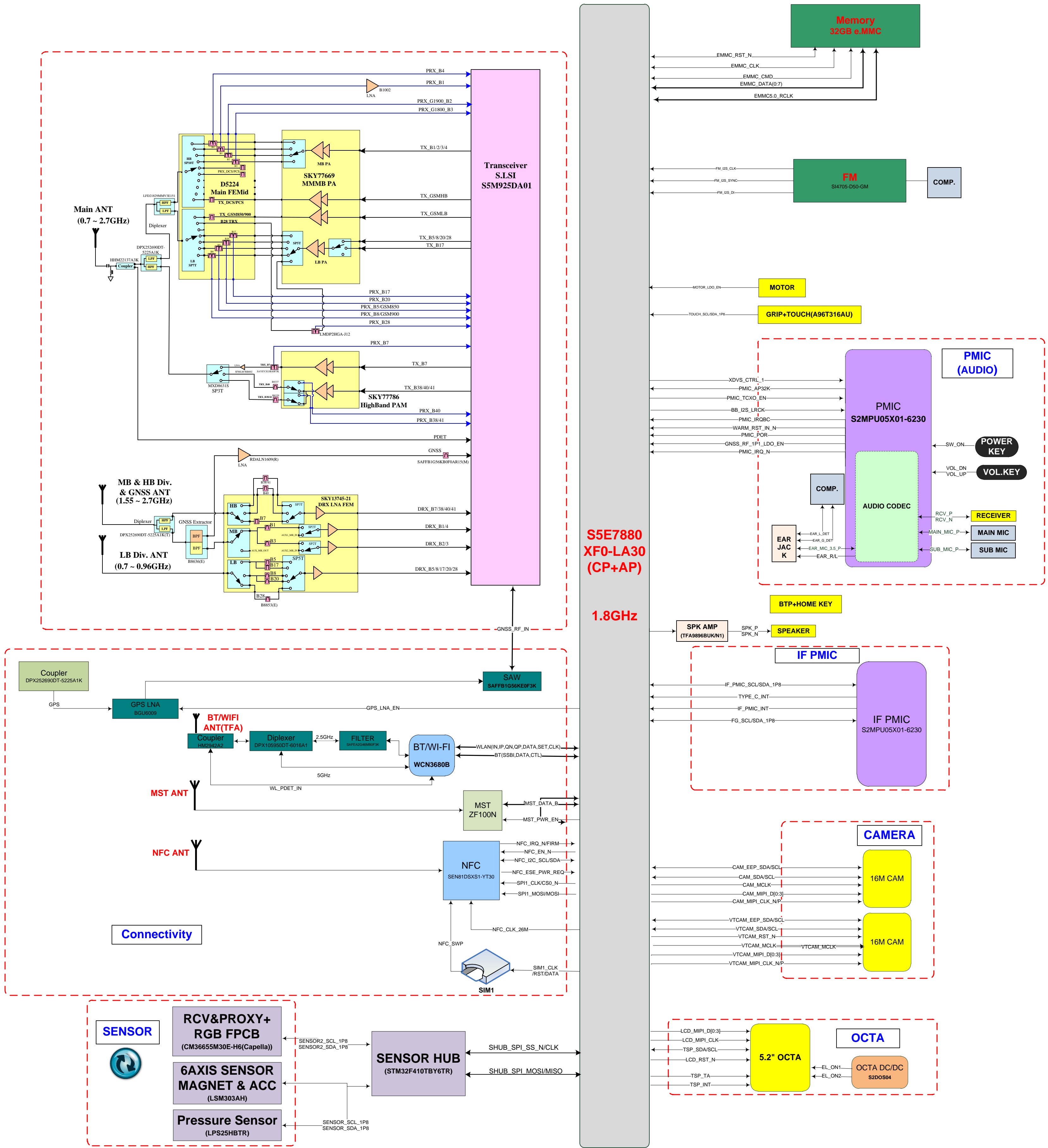


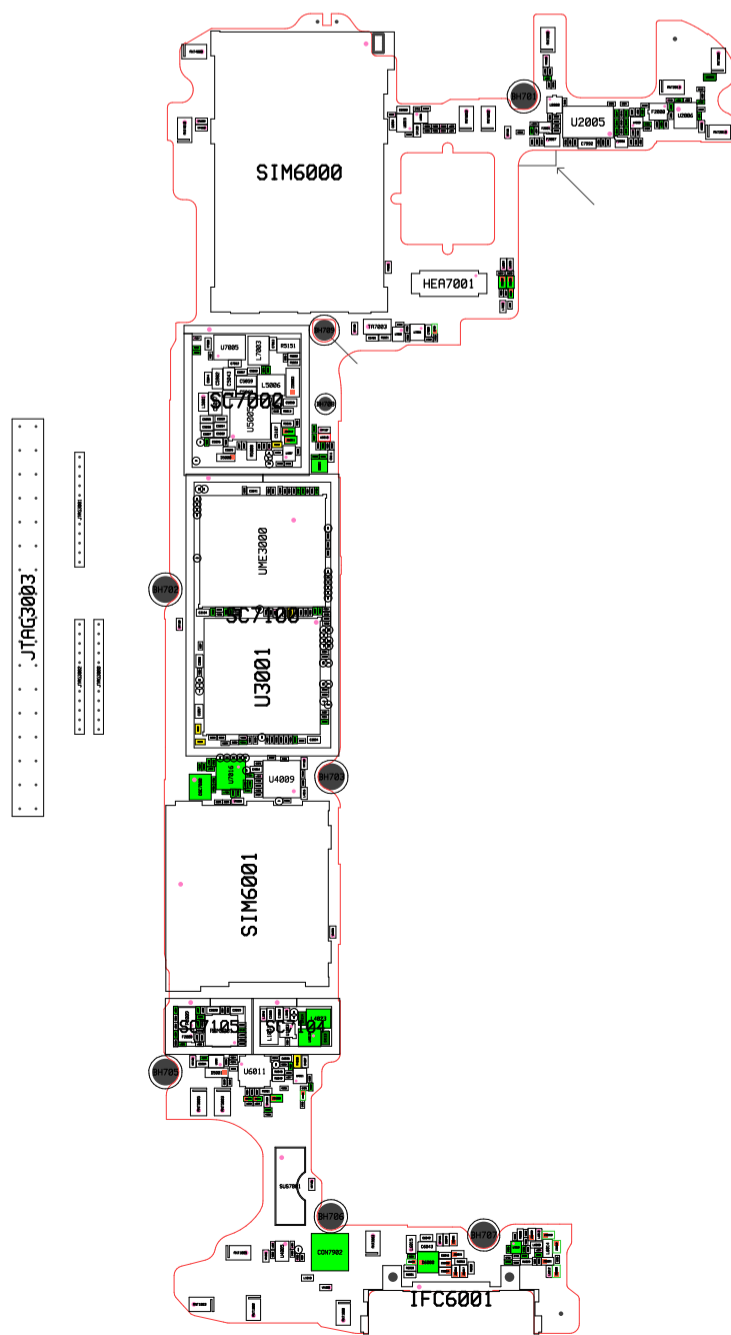
## 8. Level 3 Repair

### PBA BOT Side



# A5 2017(SM-A520F/DS) BLOCK DIAGRAM





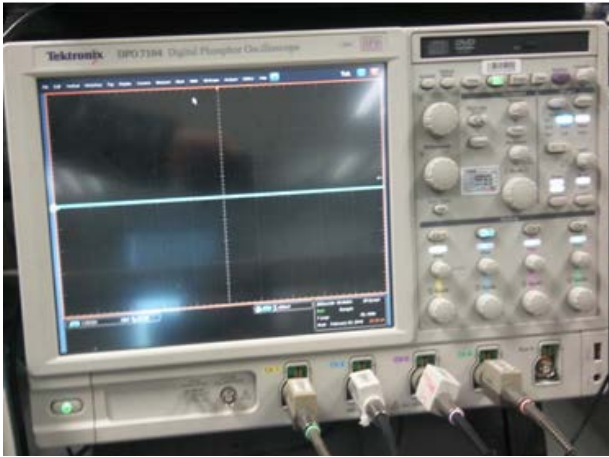

Model :  
Revision :  
Manufacture Count :  
Charge :  
Contact :  
Date :  
Routing :  
Resin :





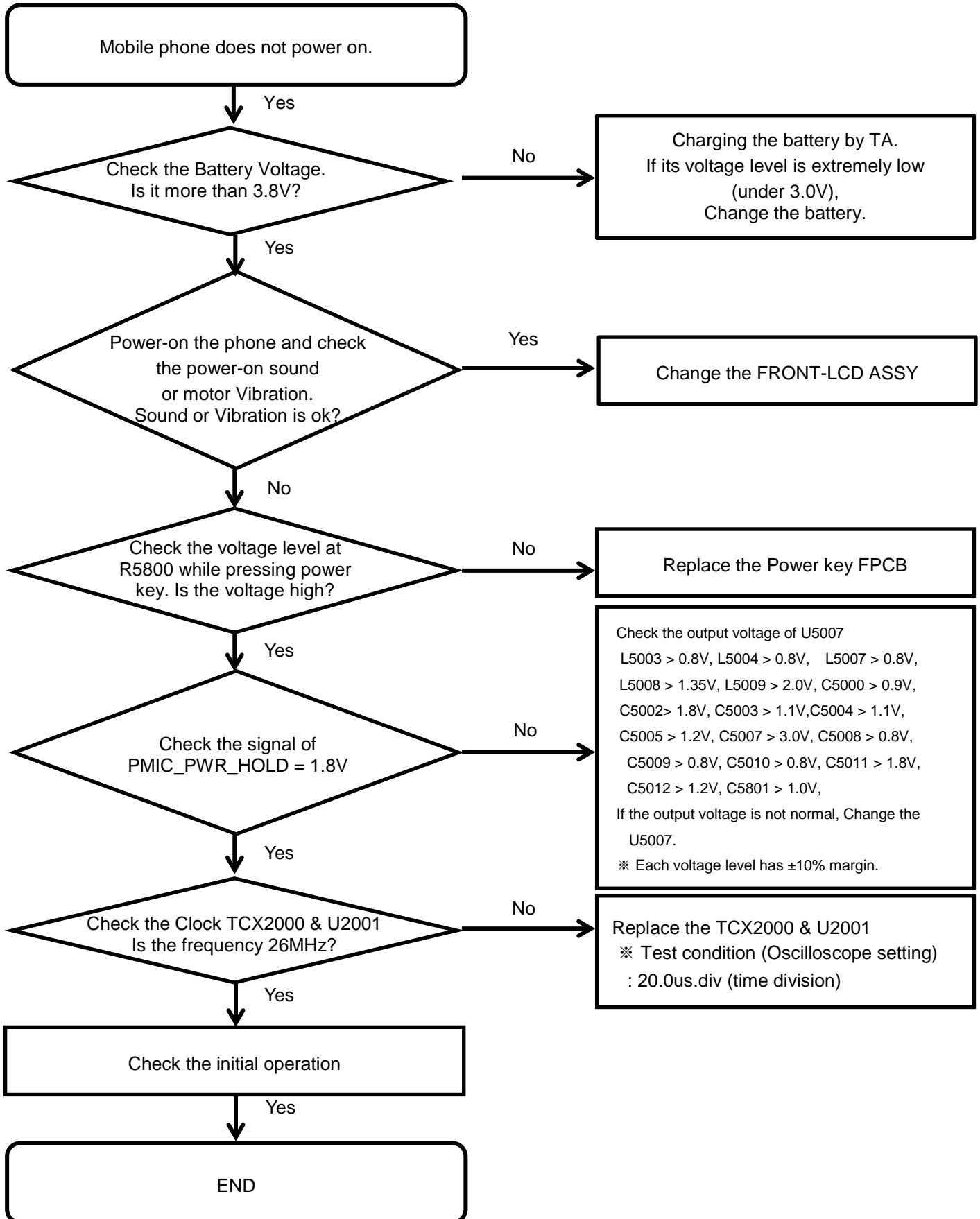
## 8. Level 3 Repair

### 8-3. Flow chart of Troubleshooting.

	
<p><b>Oscilloscope</b></p>	<p><b>Digital Multimeter</b></p>
	
<p><b>Power Supply</b></p>	<p><b>+ driver, ESD Safe Tweezer</b></p>
	
<p><b>8960 &amp; Spectrum Analyzer</b></p>	<p><b>Soldering iron</b></p>

## 8. Level 3 Repair

### 8-4-1. Power on

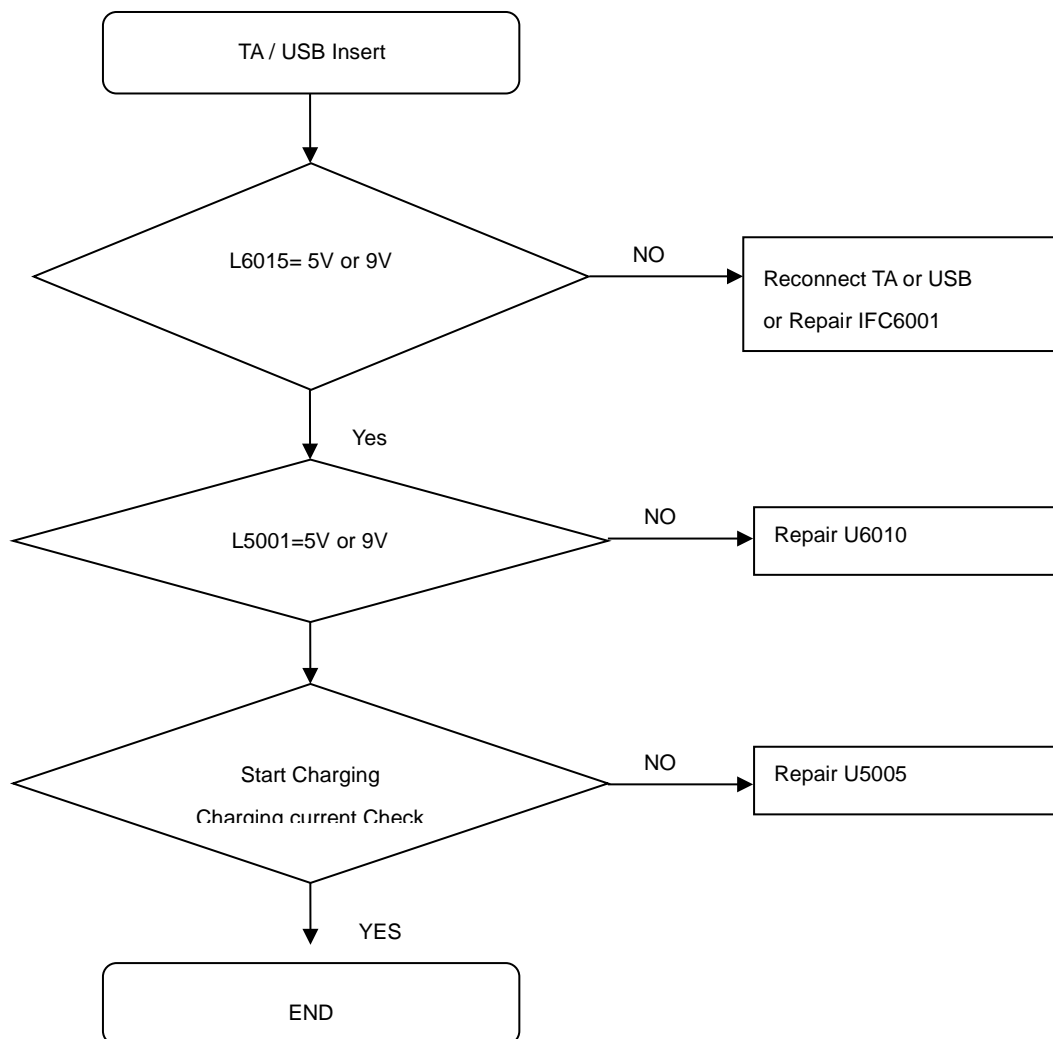


---

## 8. Level 3 Repair

---

### 8-4-2. Charging Part



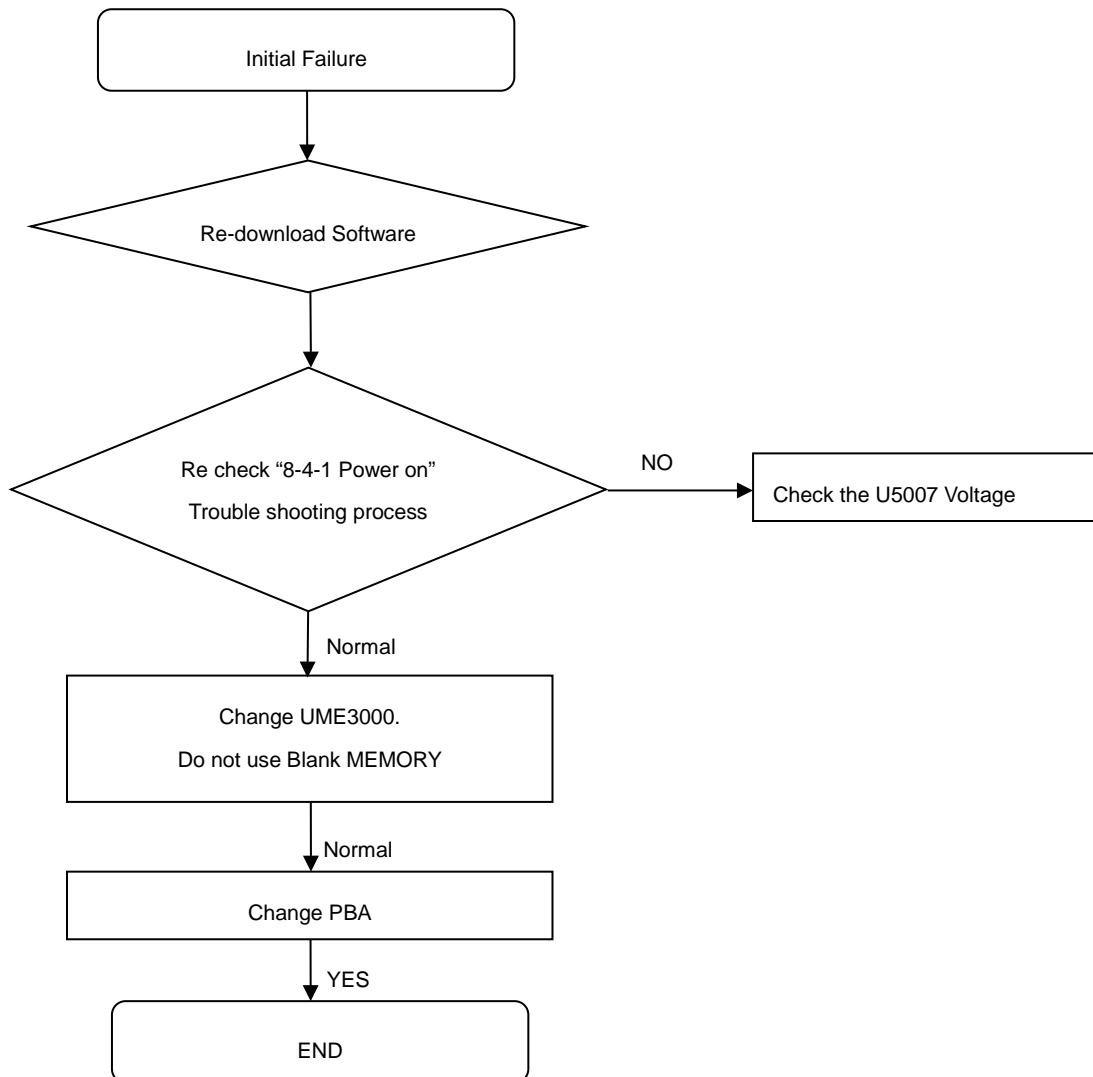


---

## 8. Level 3 Repair

---

### 8-4-3. initial

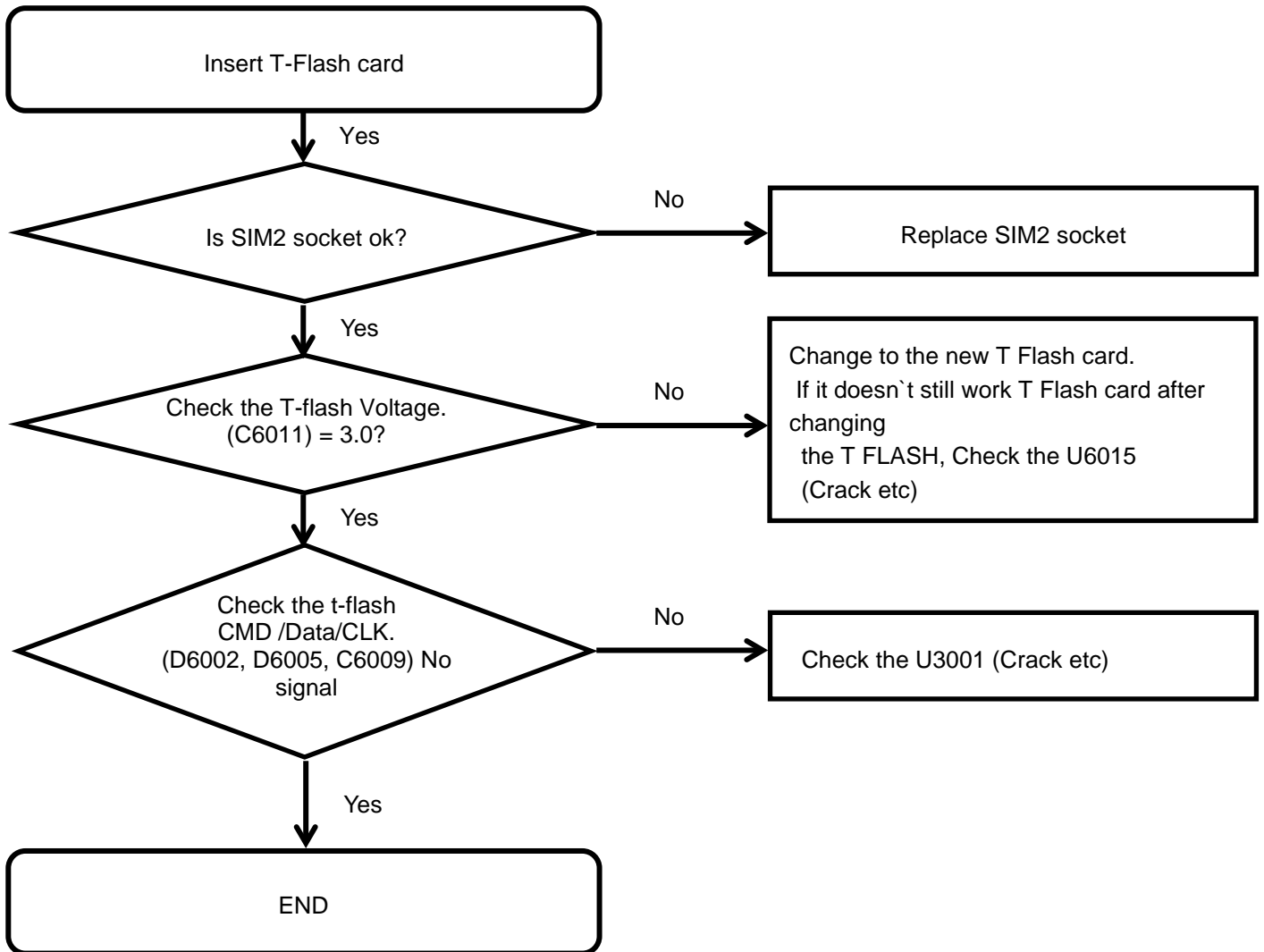


---

## 8. Level 3 Repair

---

### 8-4-4. T-Flash Part

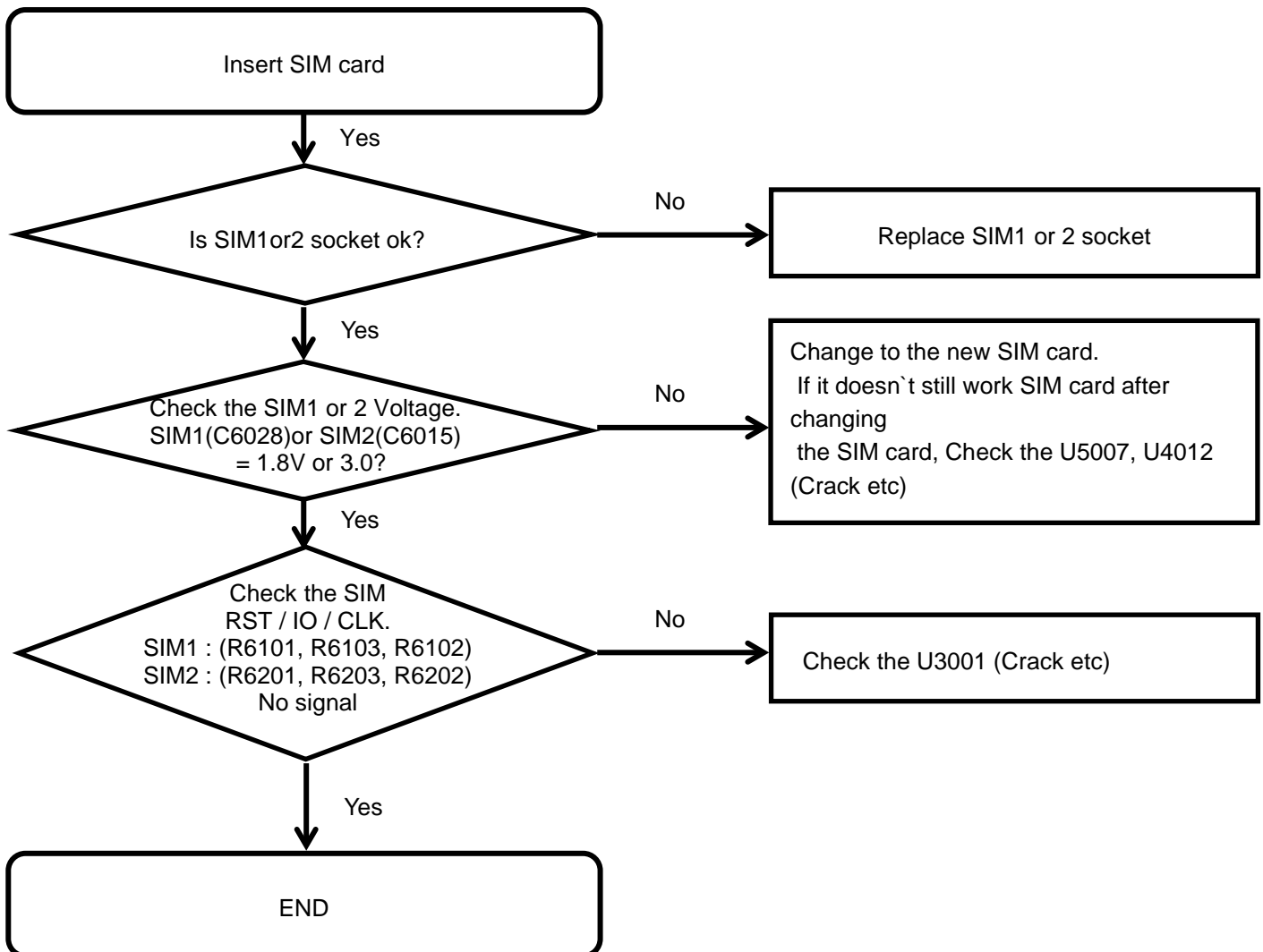


---

## 8. Level 3 Repair

---

### 8-4-5. SIM PART

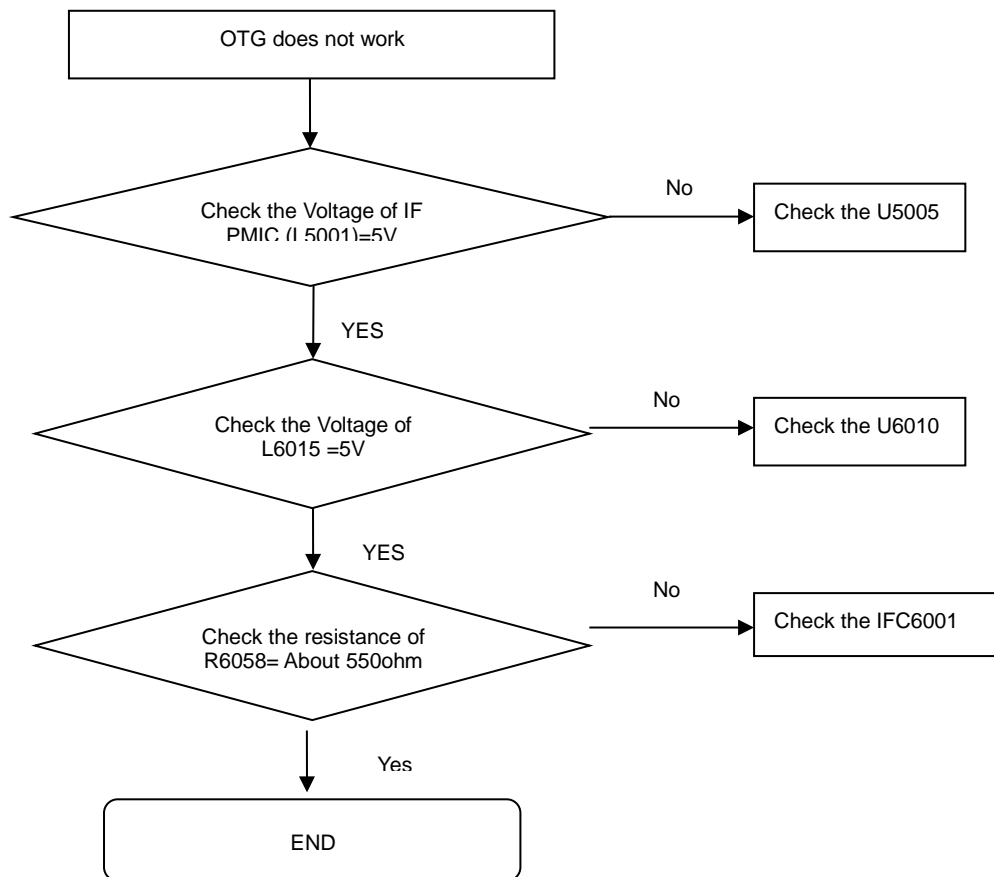


---

## 8. Level 3 Repair

---

### 8-4-6. OTG

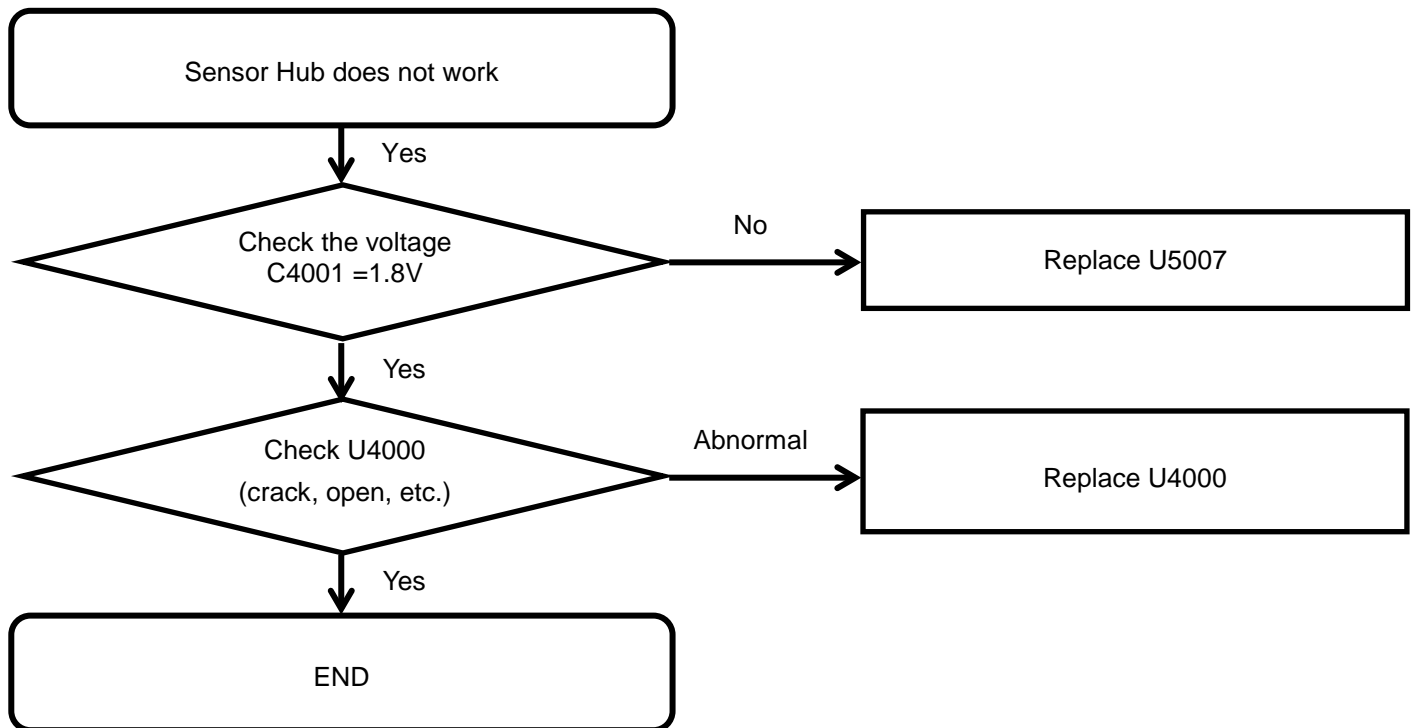


---

## 8. Level 3 Repair

---

### 8-4-7-1. Sensor Hub

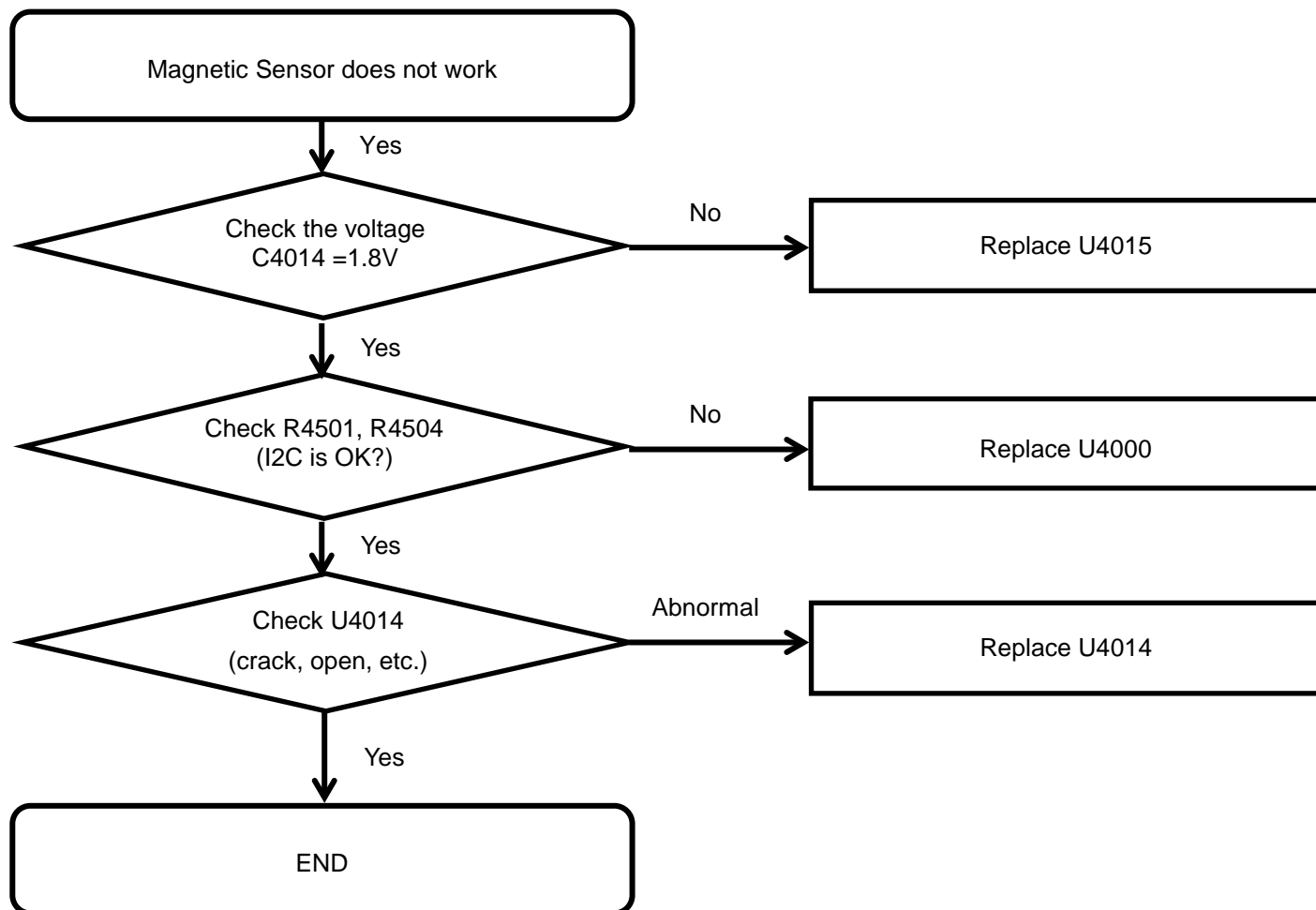


---

## 8. Level 3 Repair

---

### 8-4-7-2. Magnetic Sensor



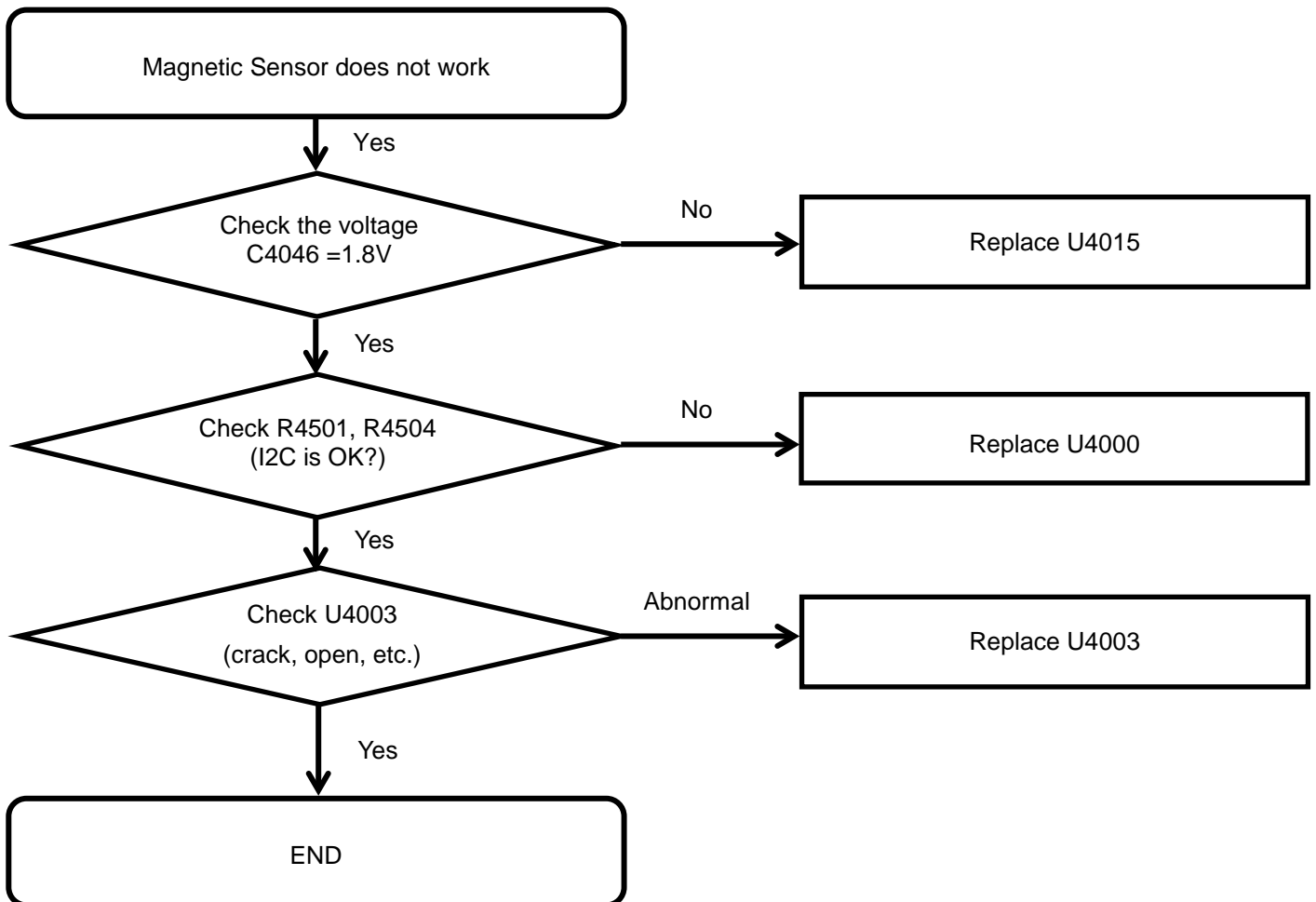


---

## 8. Level 3 Repair

---

### 8-4-7-3. 6Axis Sensor

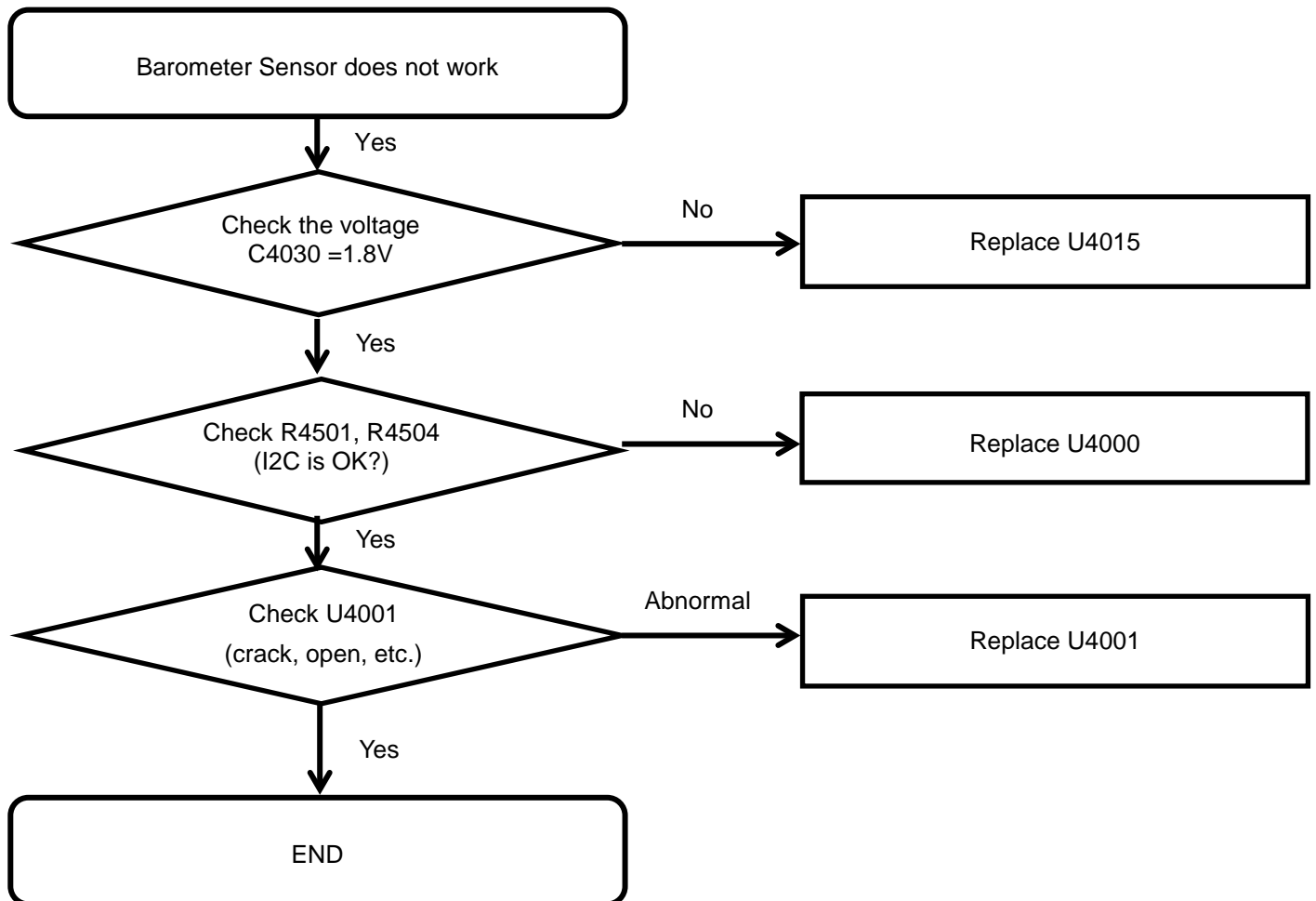


---

## 8. Level 3 Repair

---

### 8-4-7-4. Pressure sensor

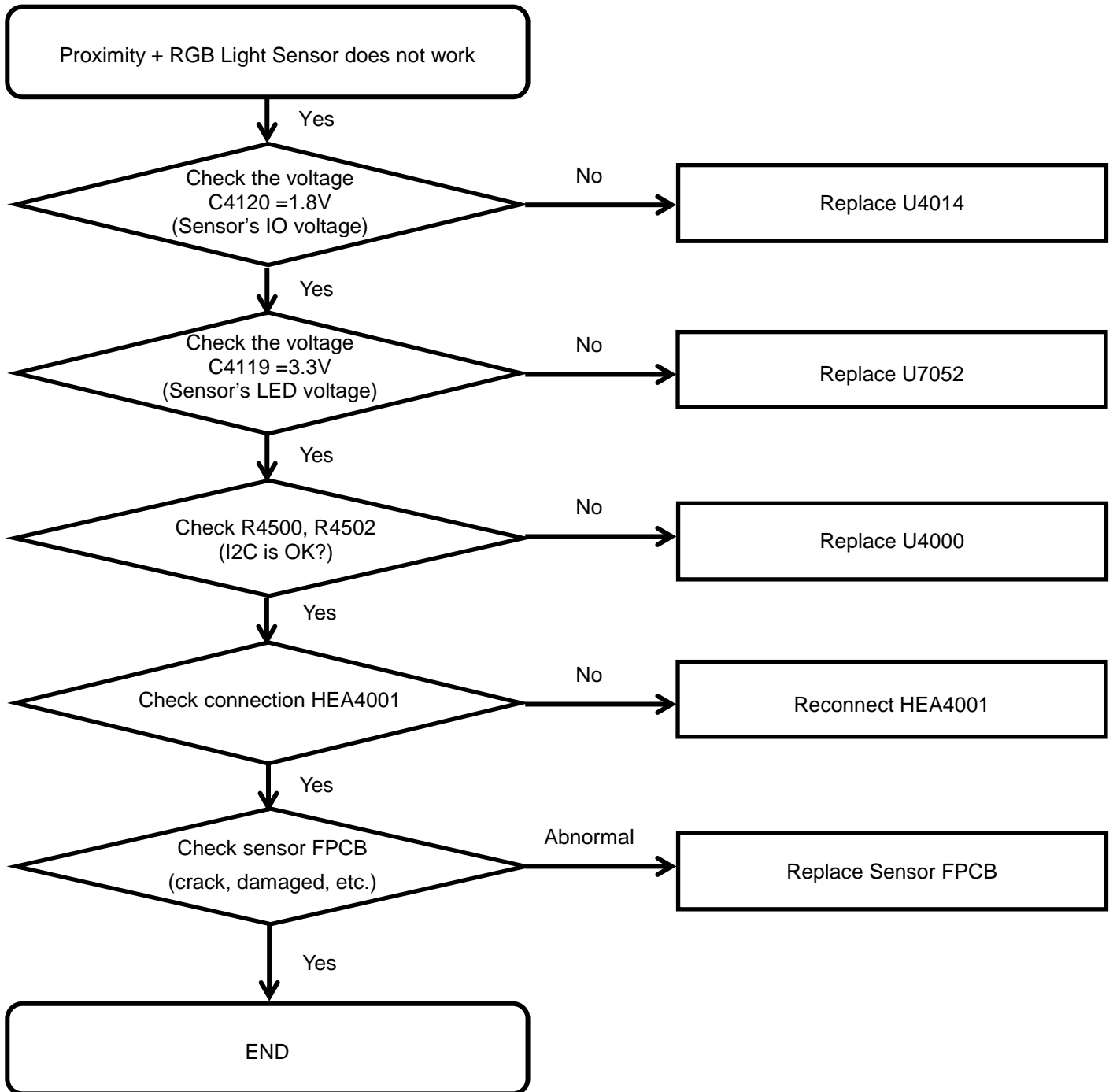


---

## 8. Level 3 Repair

---

### 8-4-7-5. Proximity + RGB Light sensor

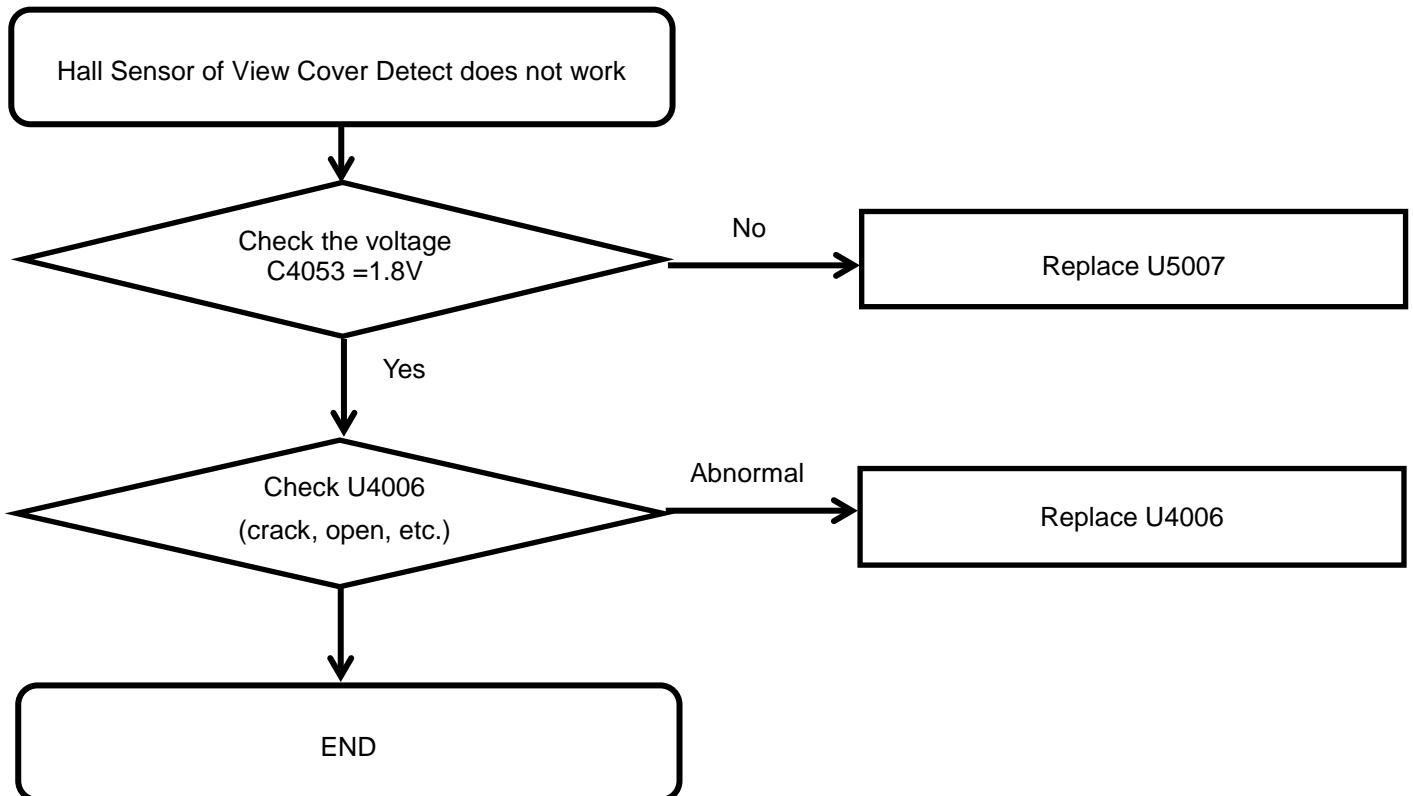
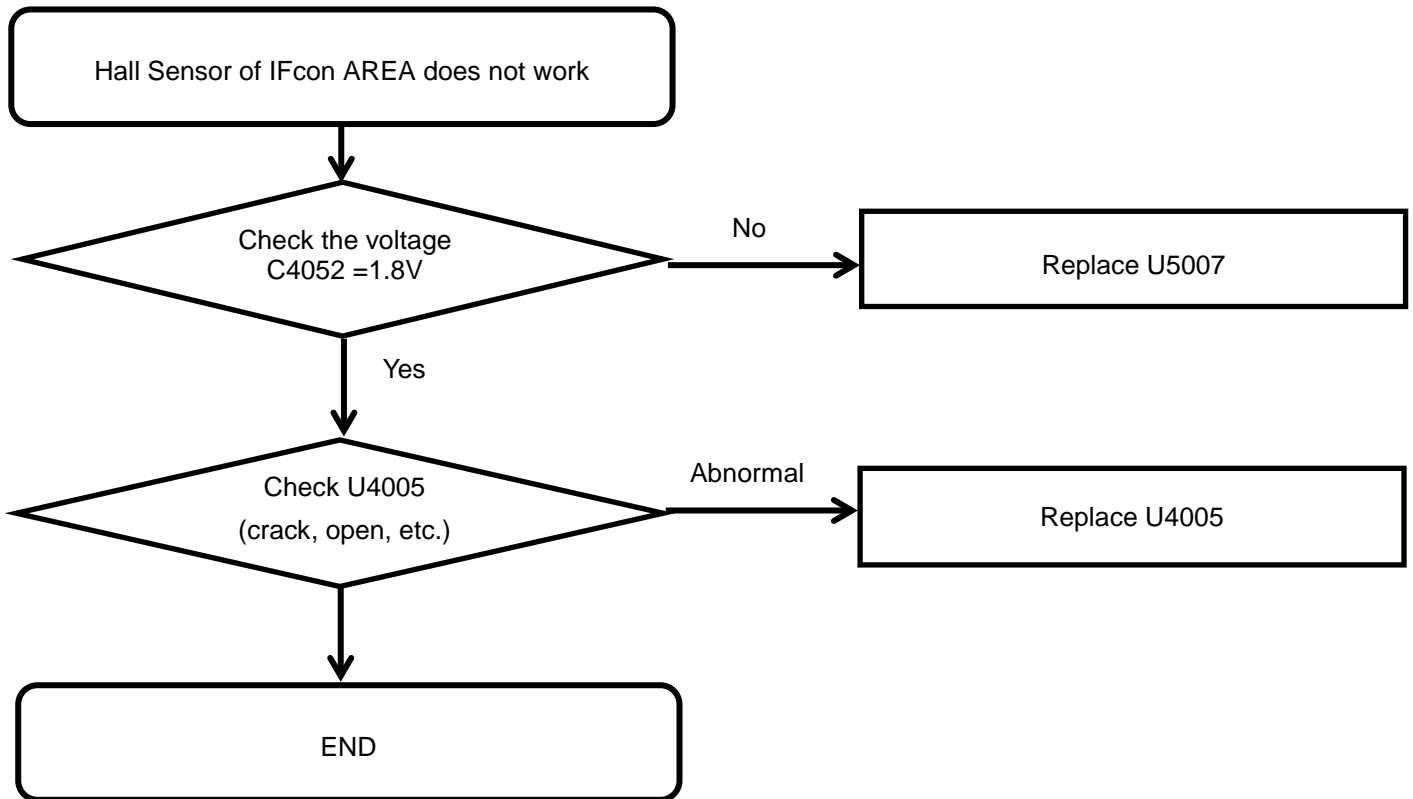


---

## 8. Level 3 Repair

---

### 8-4-7-6. Hall Sensor

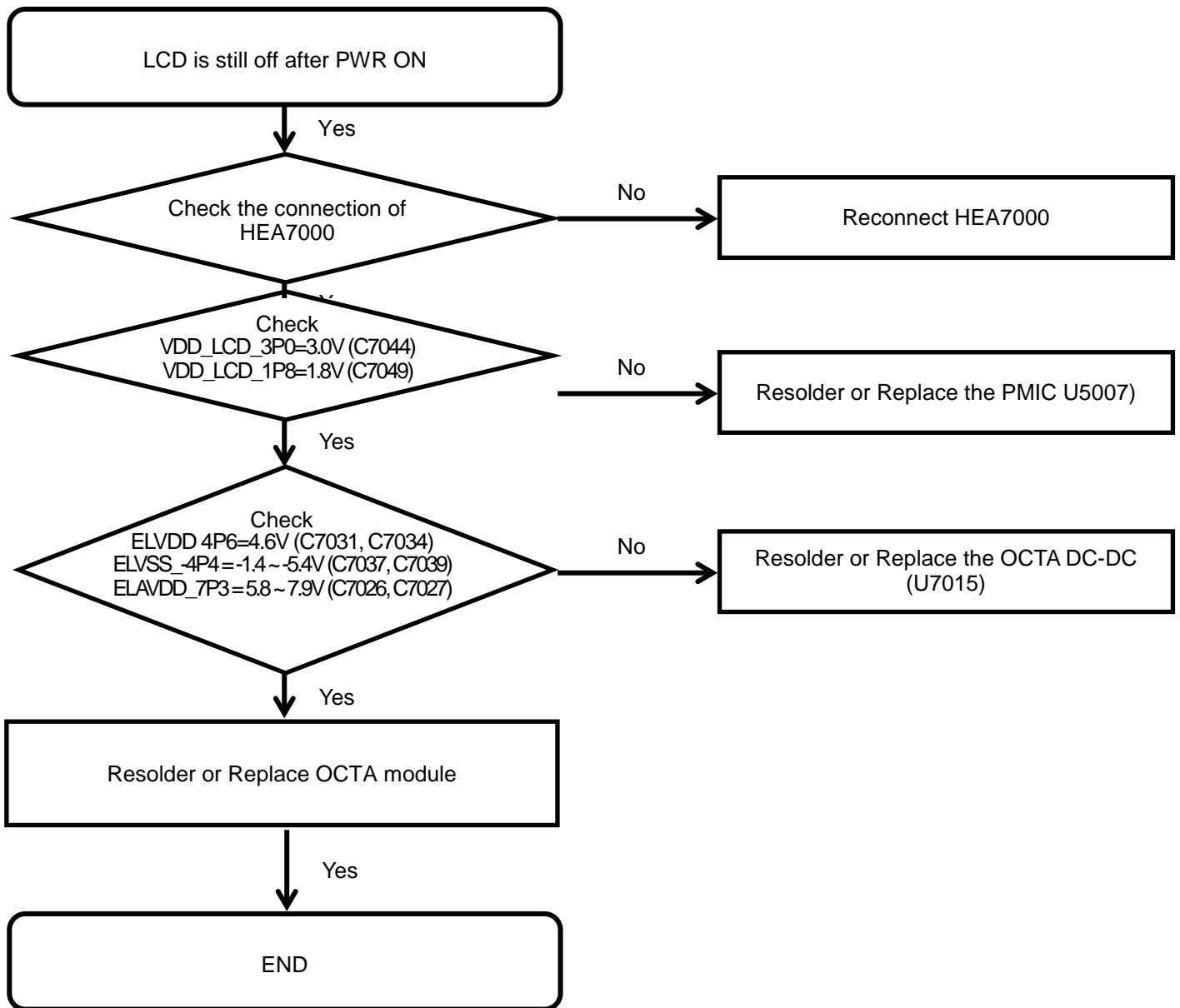


---

## 8. Level 3 Repair

---

### 8-4-8. OCTA

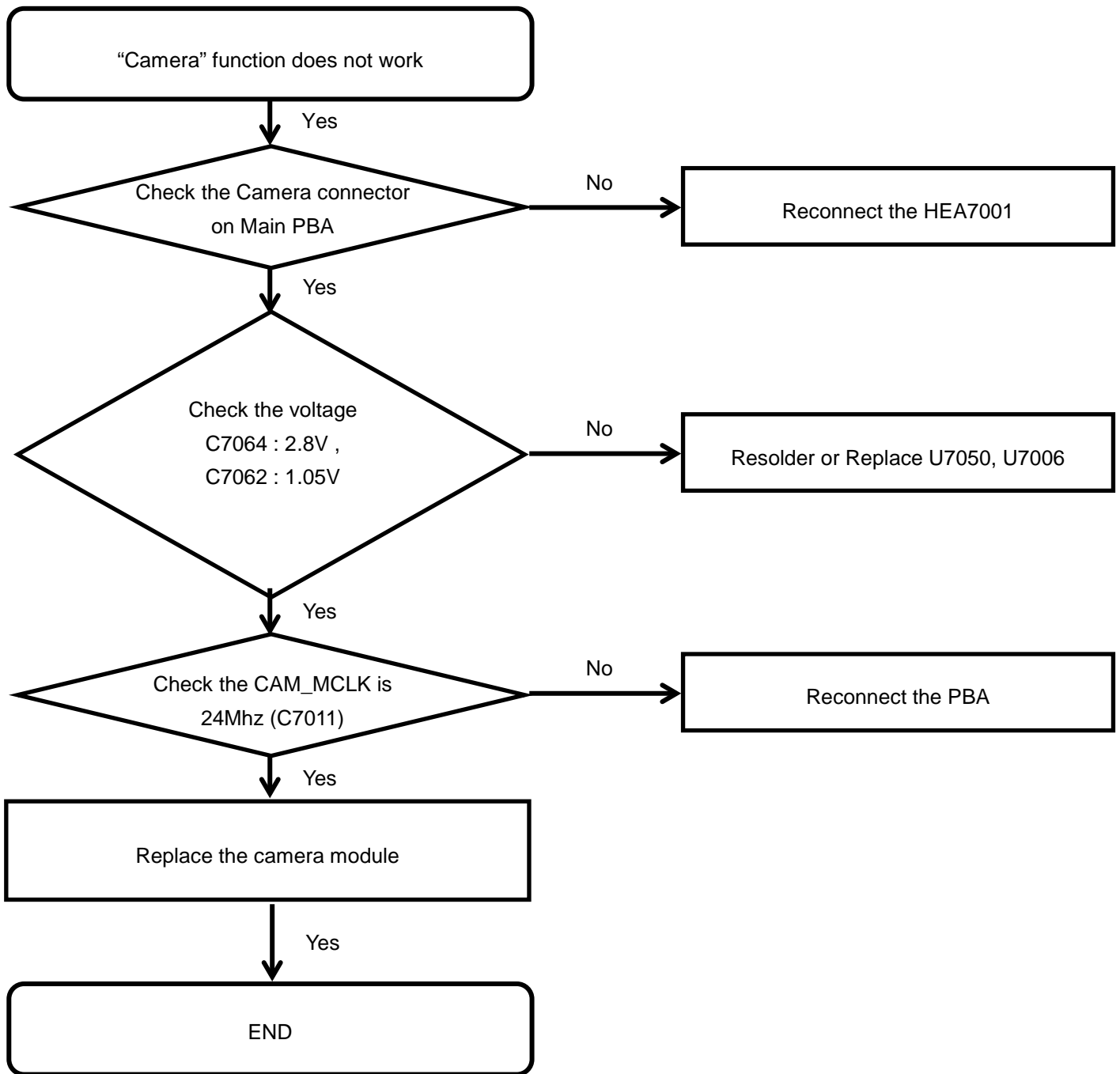


---

## 8. Level 3 Repair

---

### 8-4-9. Rear CAMERA



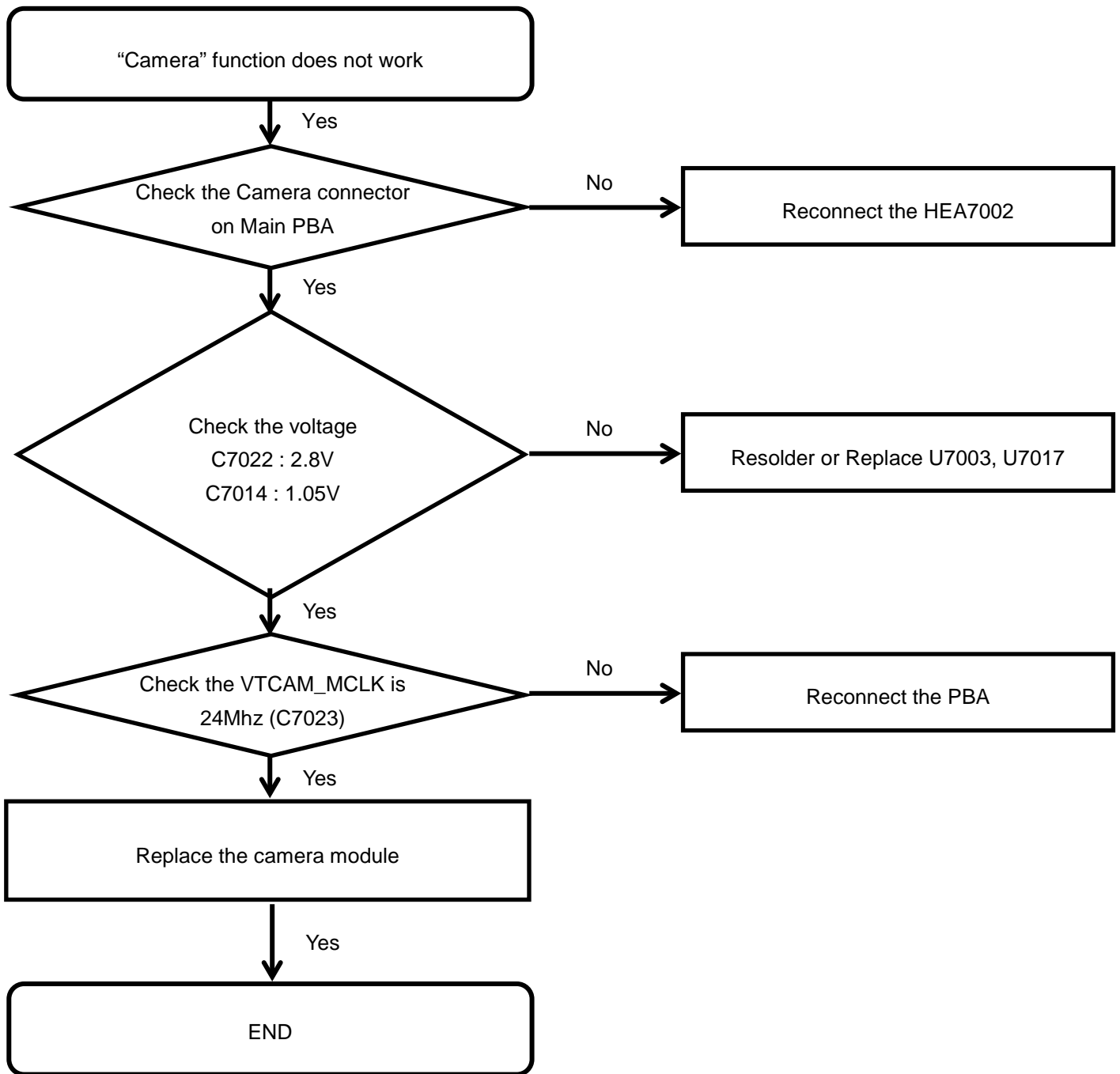


---

## 8. Level 3 Repair

---

### 8-4-10. Front CAMERA

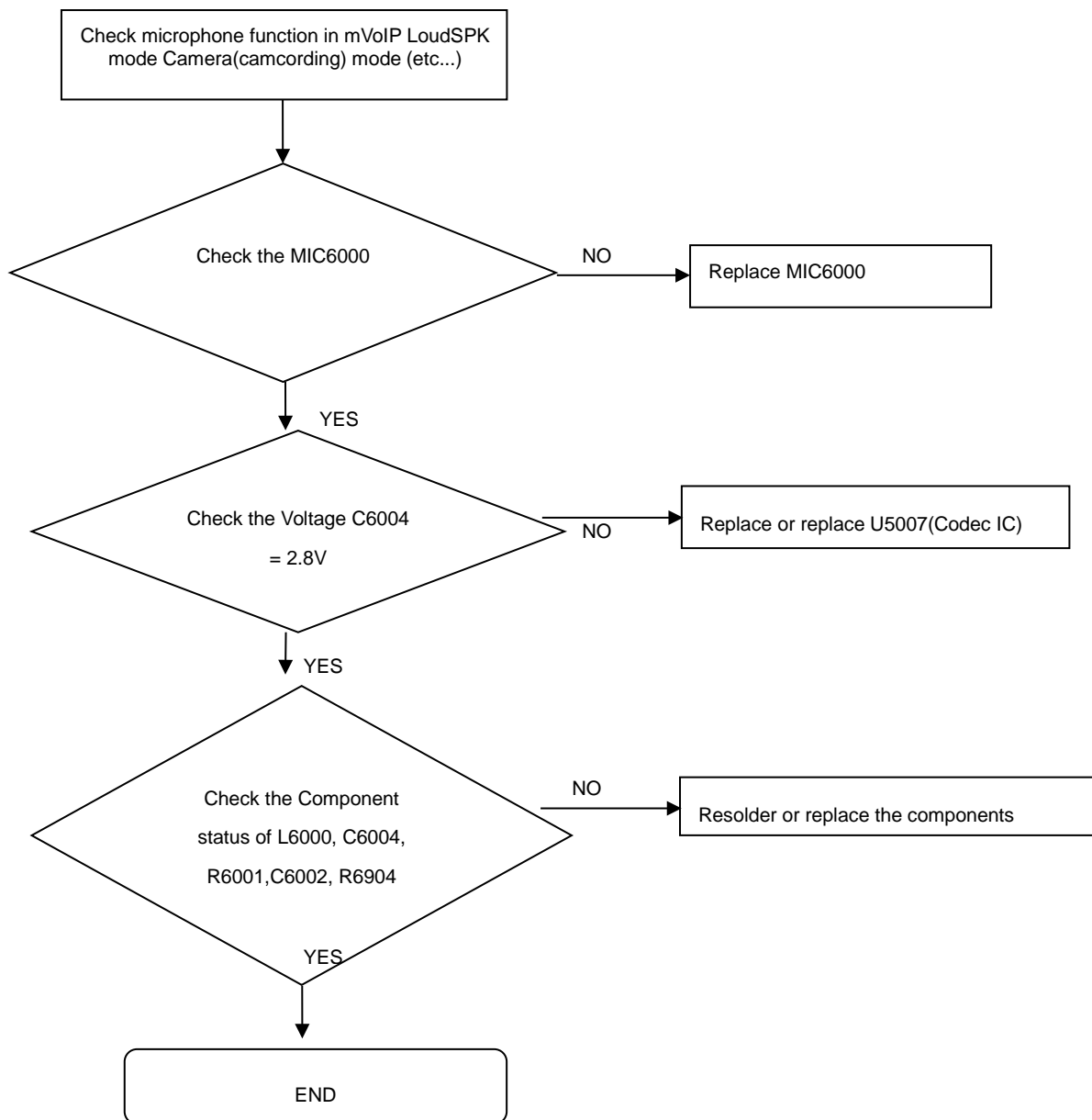


---

## 8. Level 3 Repair

---

### 8-4-11. Microphone Part – Main MIC

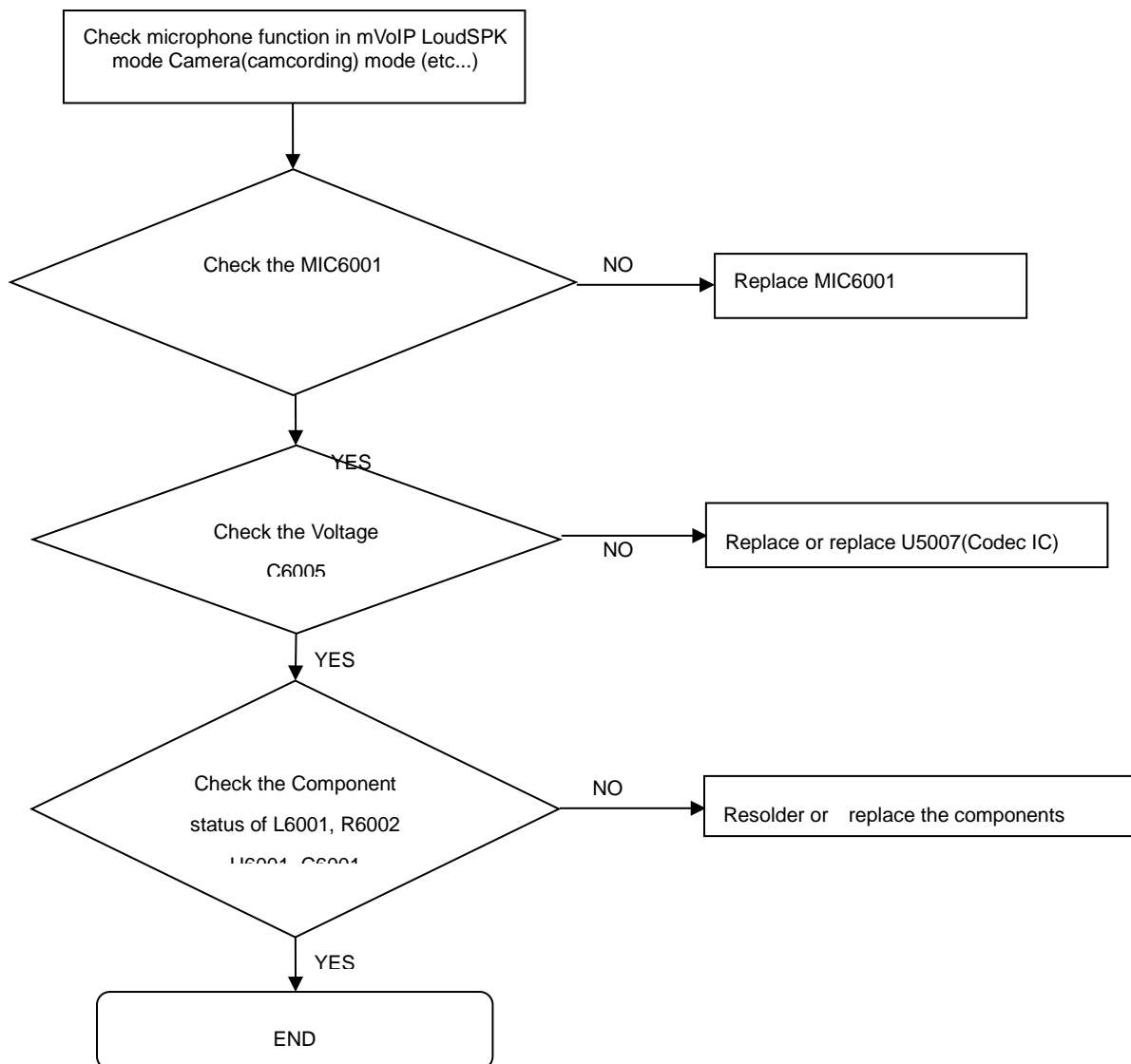


---

## 8. Level 3 Repair

---

### 8-4-12. Microphone Part – SUB MIC

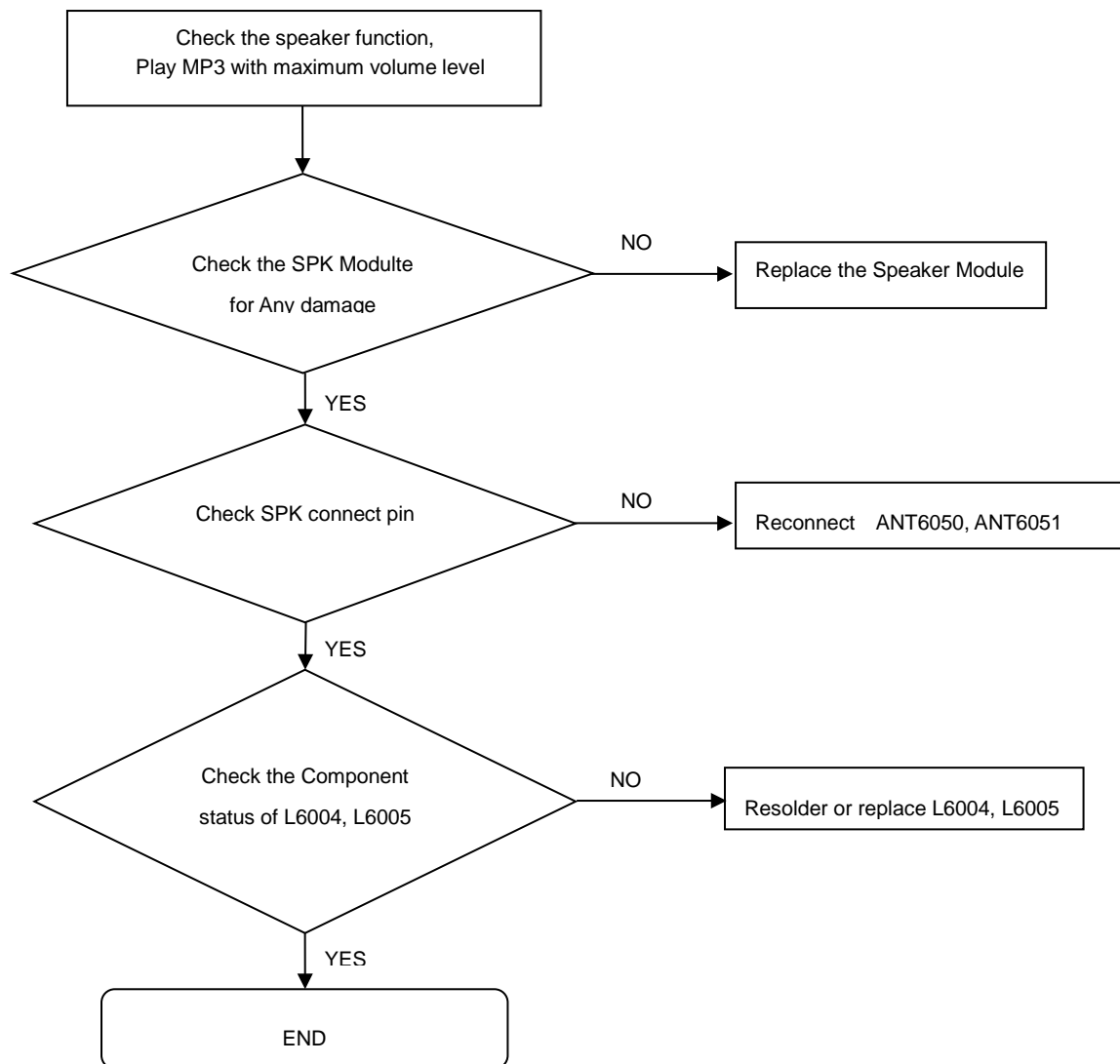


---

## 8. Level 3 Repair

---

### 8-4-13. Speaker part

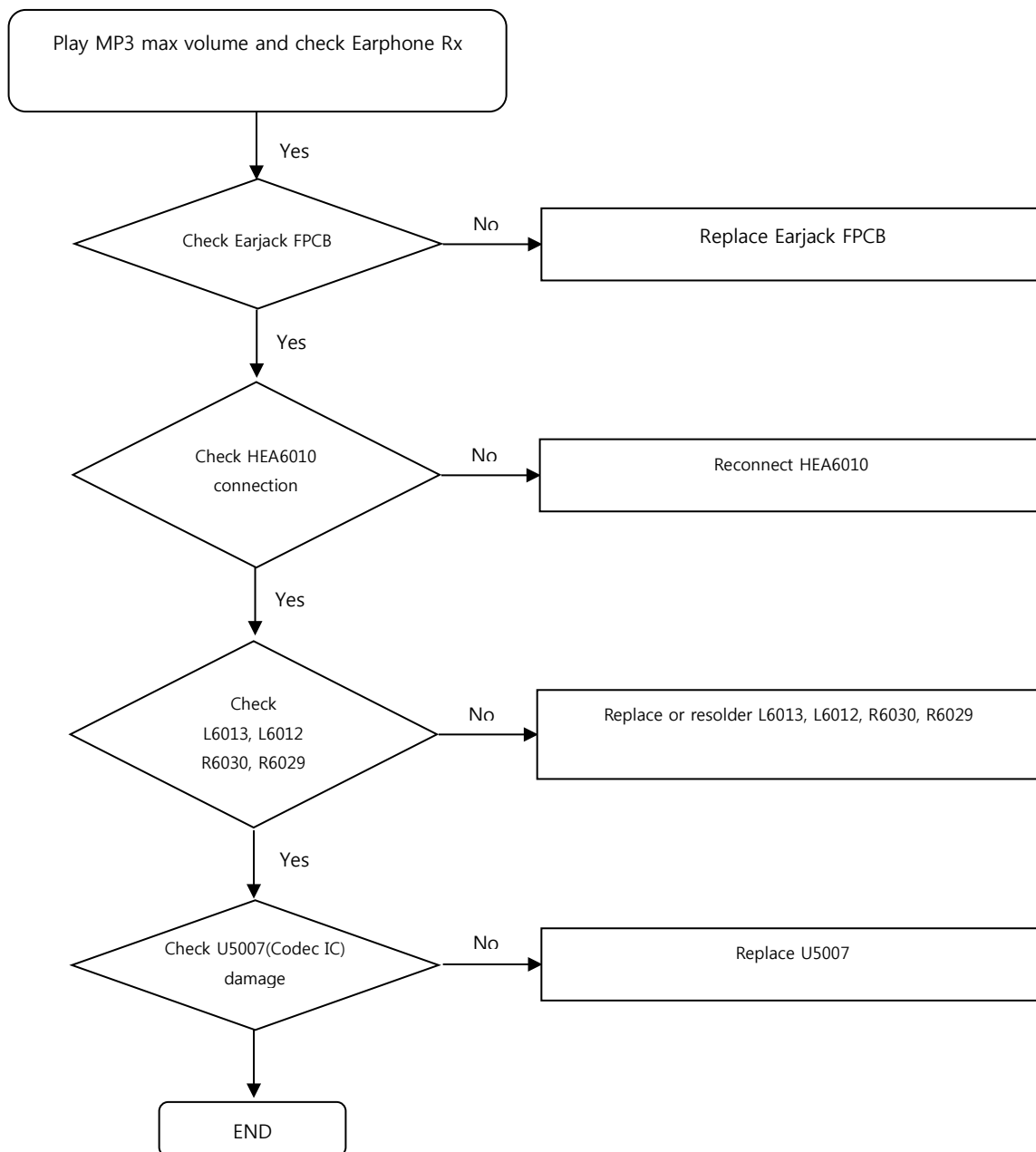


---

## 8. Level 3 Repair

---

### 8-4-14. Earjack Part - Rx

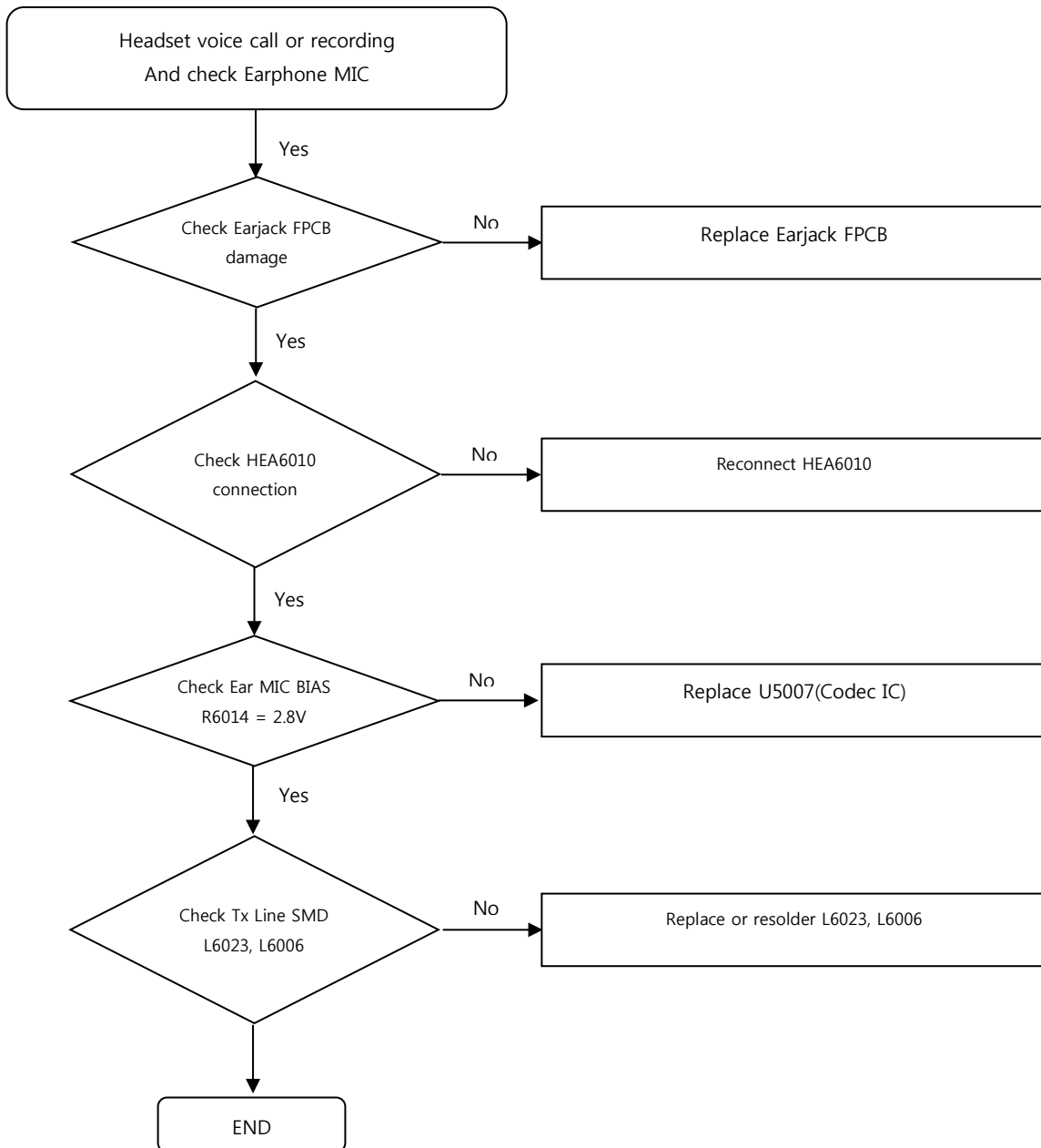


---

## 8. Level 3 Repair

---

### 8-4-15. Earjack Part - Tx



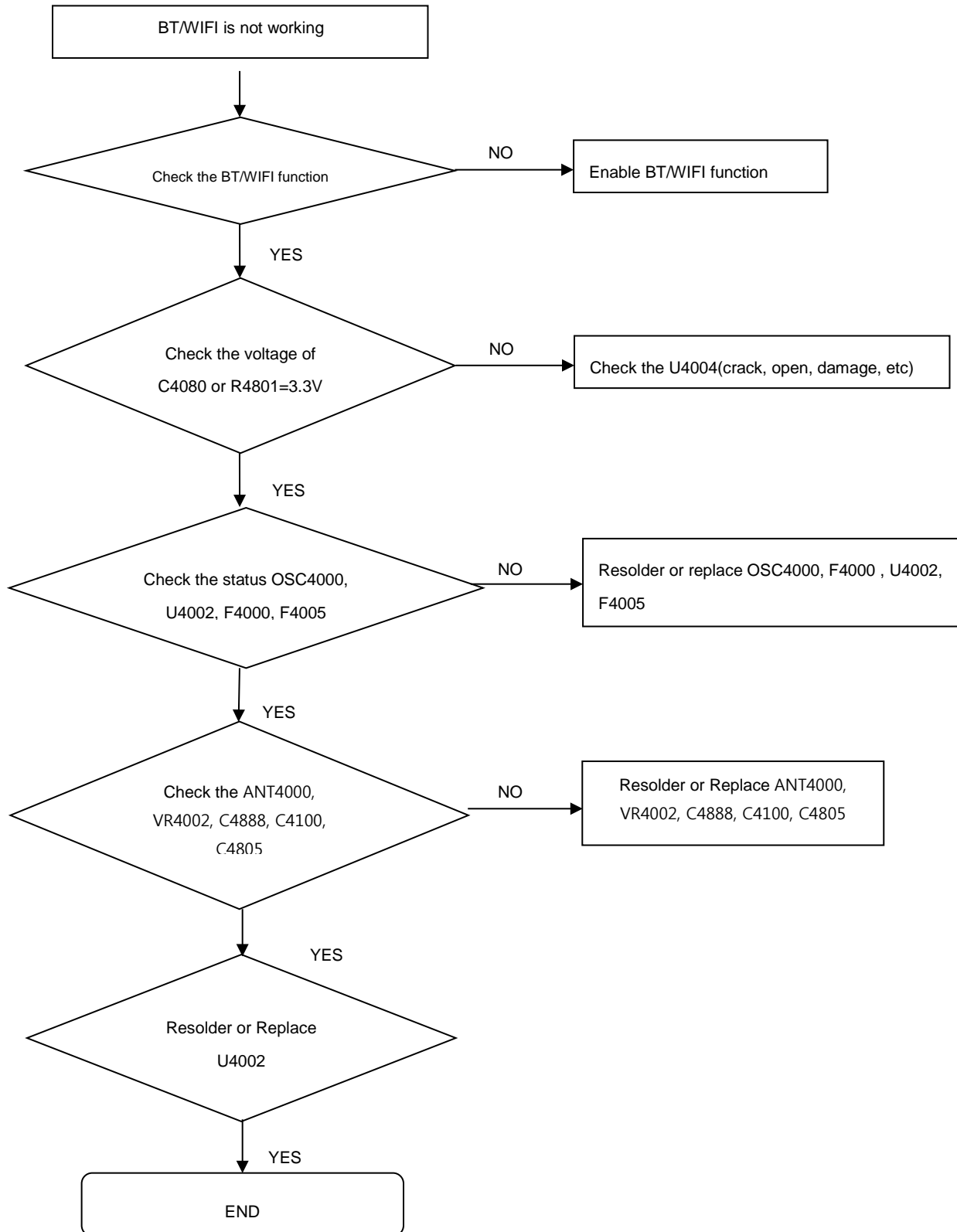


---

## 8. Level 3 Repair

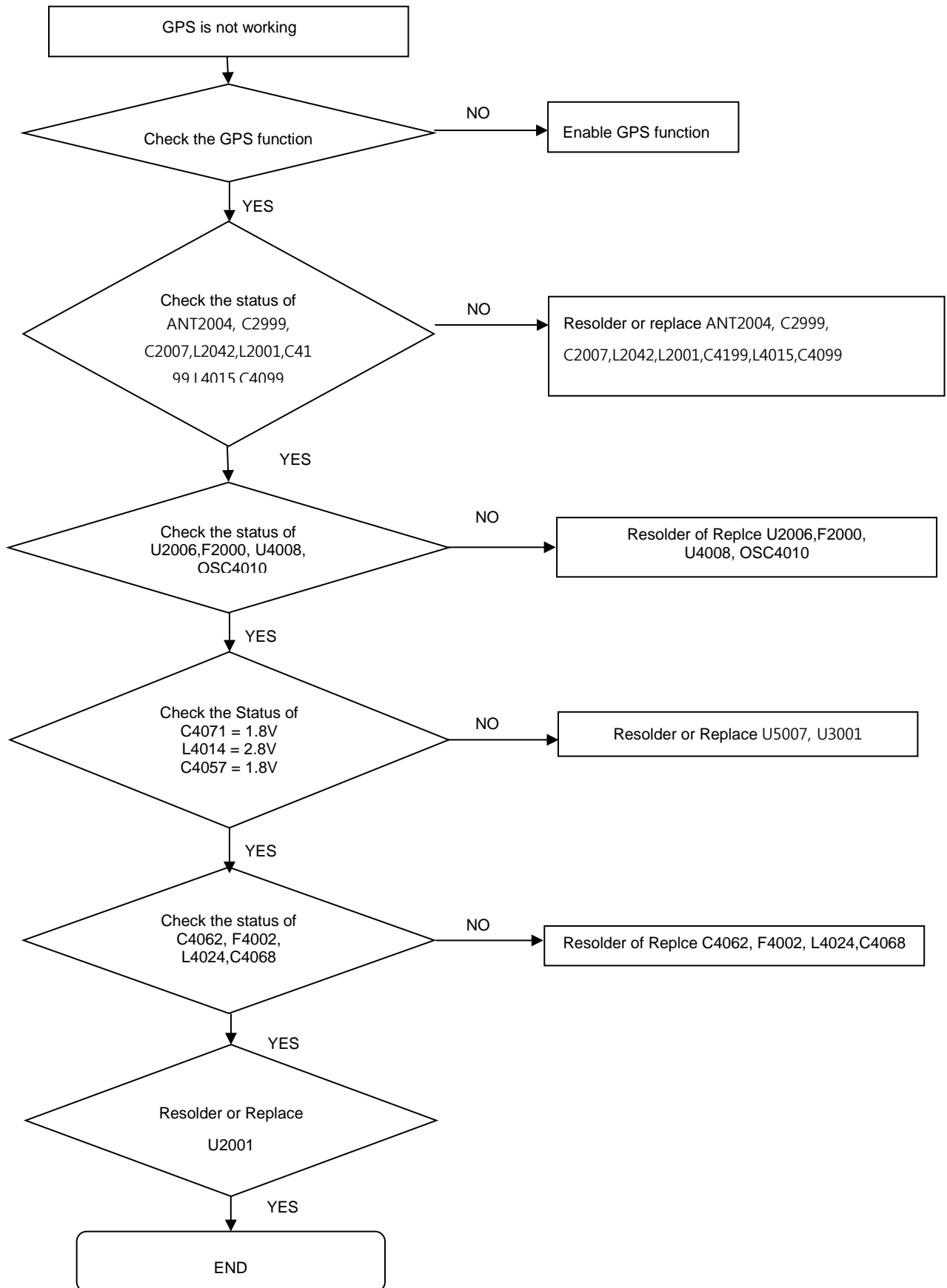
---

### 8-4-16. BT/WIFI part



## 8. Level 3 Repair

### 8-4-17. GPS part

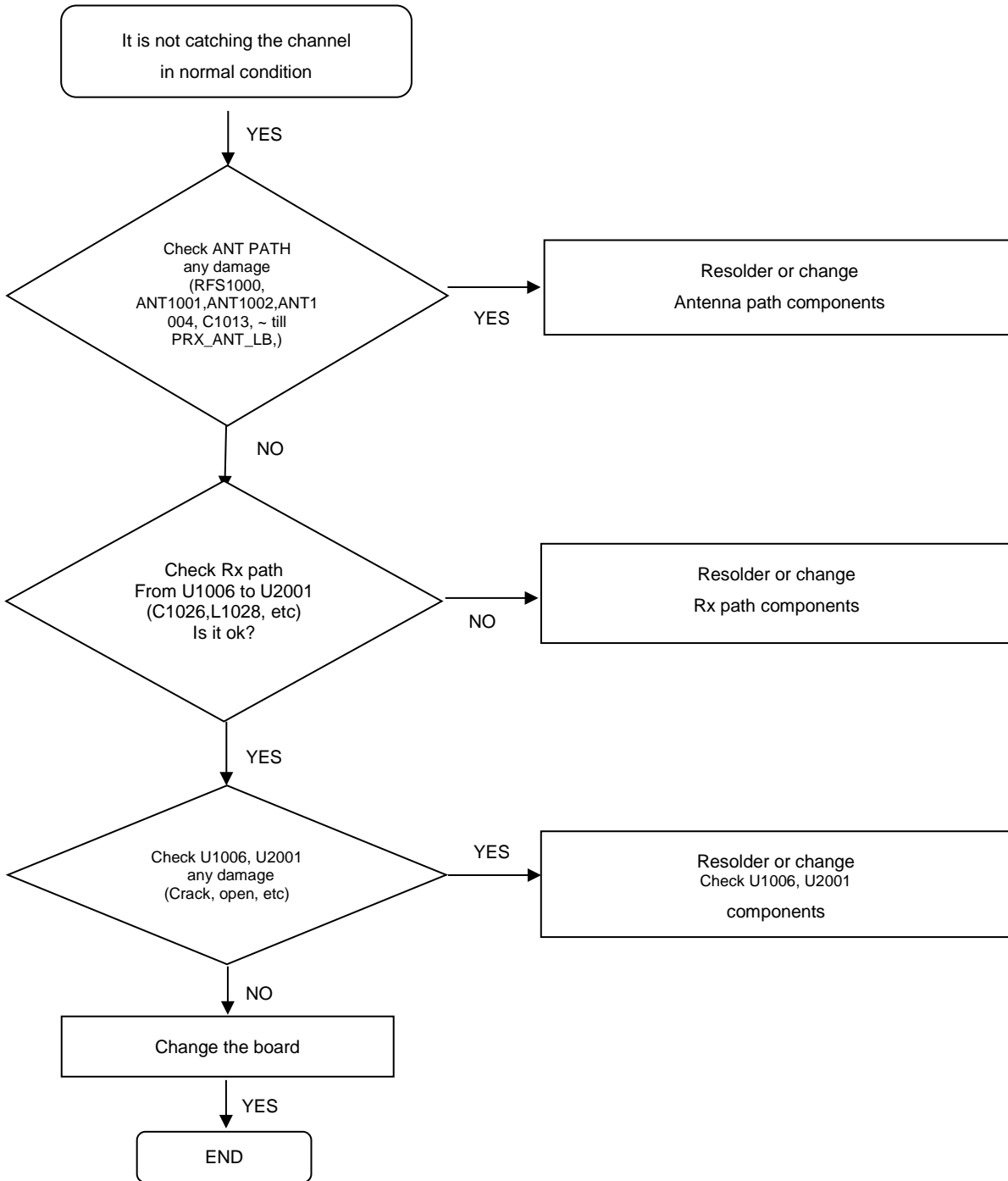


---

## 8. Level 3 Repair

---

### 8-4-18. LOW BAND RX (GSM850, 900, W5, W8, LTE5, 8, 17, 20, 28)

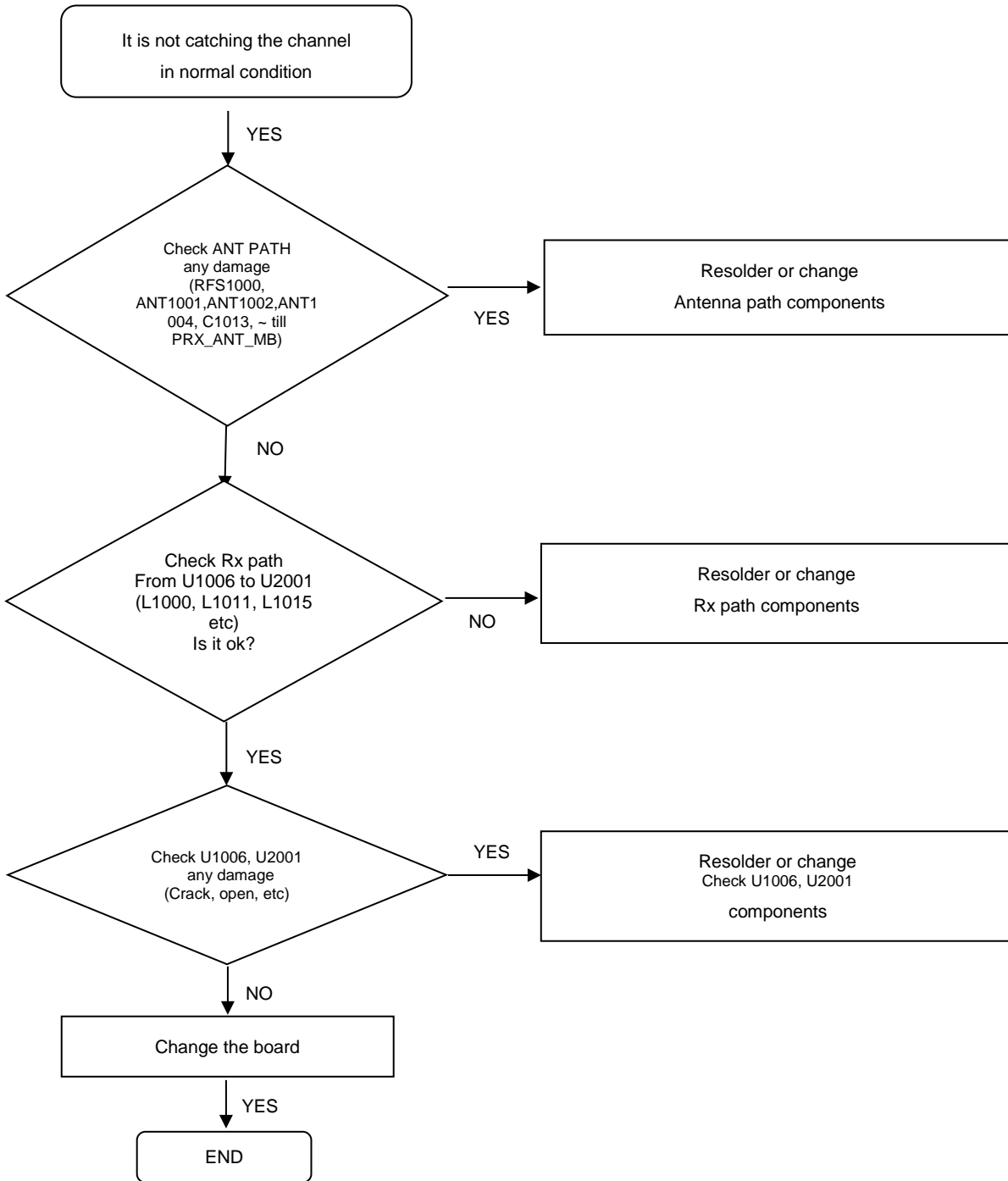


---

## 8. Level 3 Repair

---

### 8-4-19. MID BAND RX (DCS, PCS, W1, W2, W4, LTE 1,2,3,4)

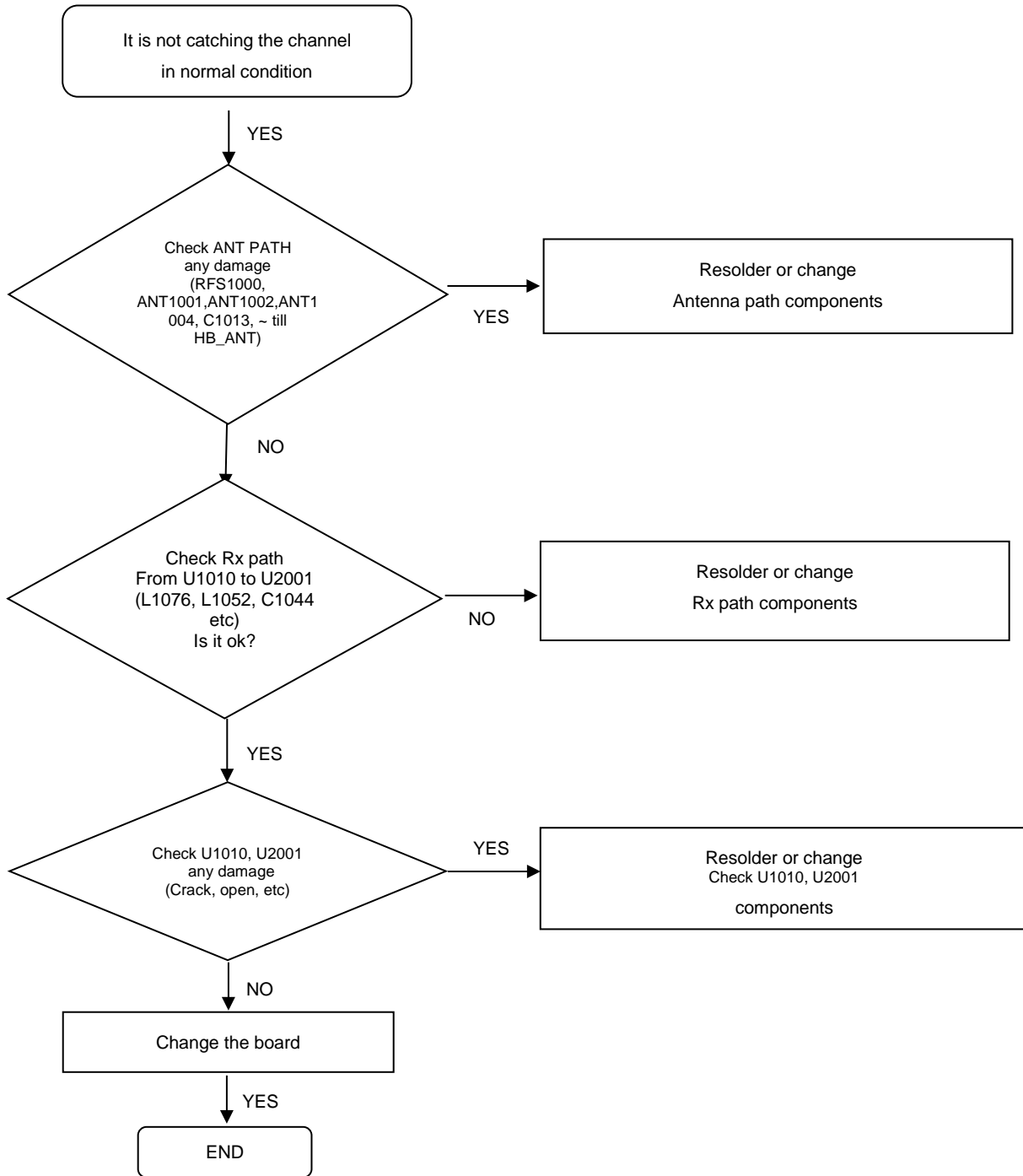


---

## 8. Level 3 Repair

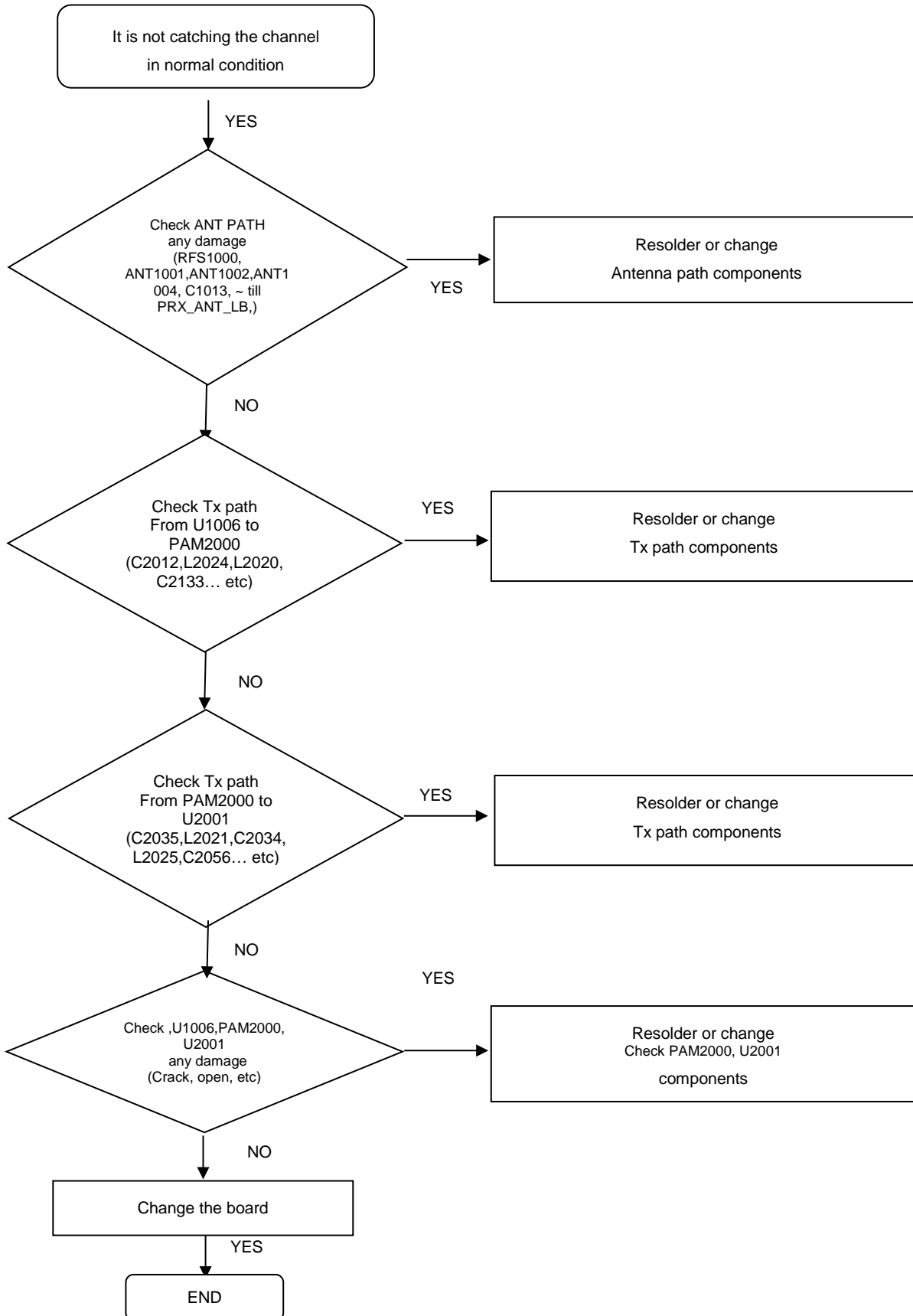
---

### 8-4-20. HIGH BAND RX (LTE 7,38,40,41)



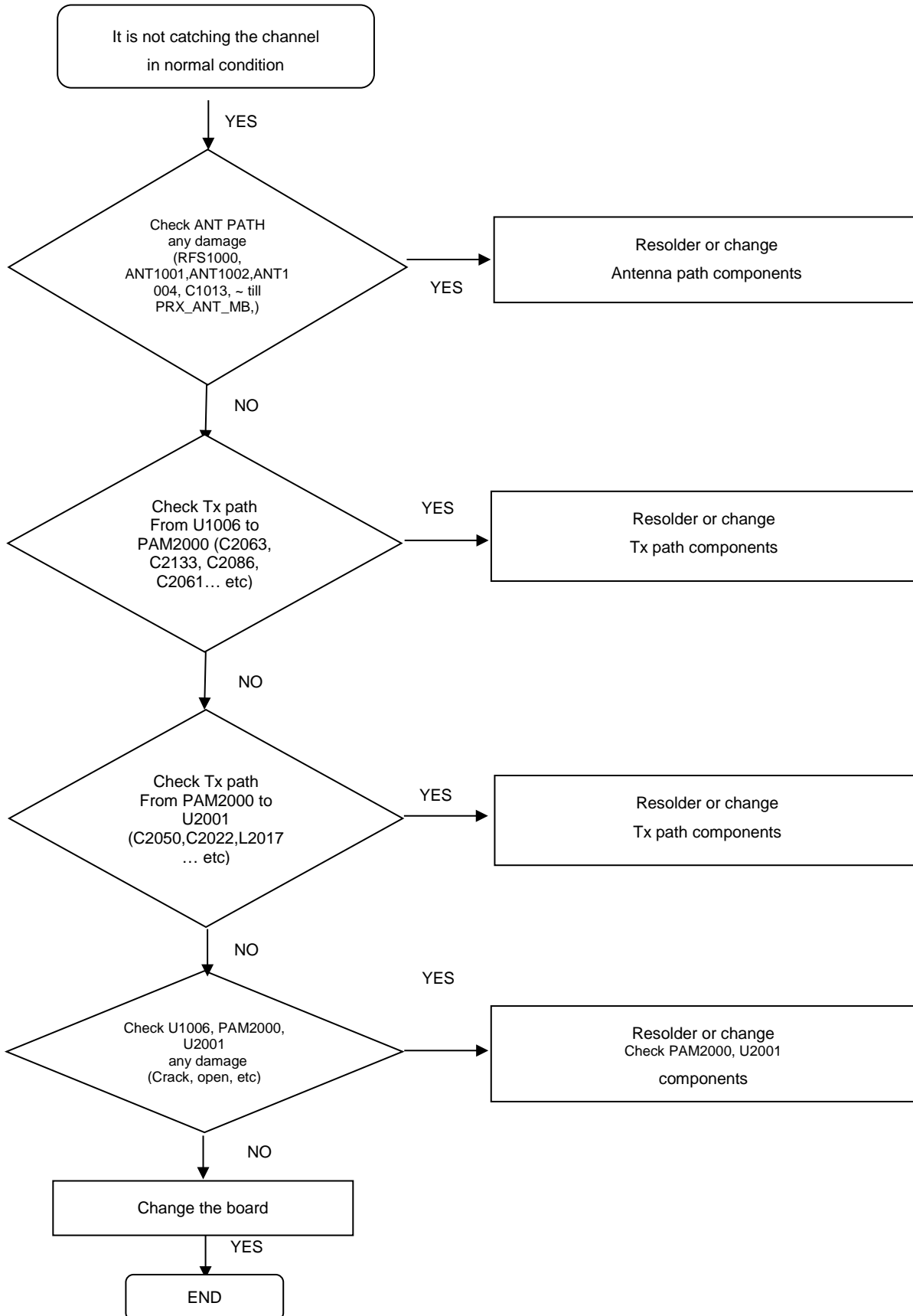
## 8. Level 3 Repair

### 8-4-21. LOW BAND TX (GSM850, 900, W5, W8, LTE5, 8, 17, 20, 28)



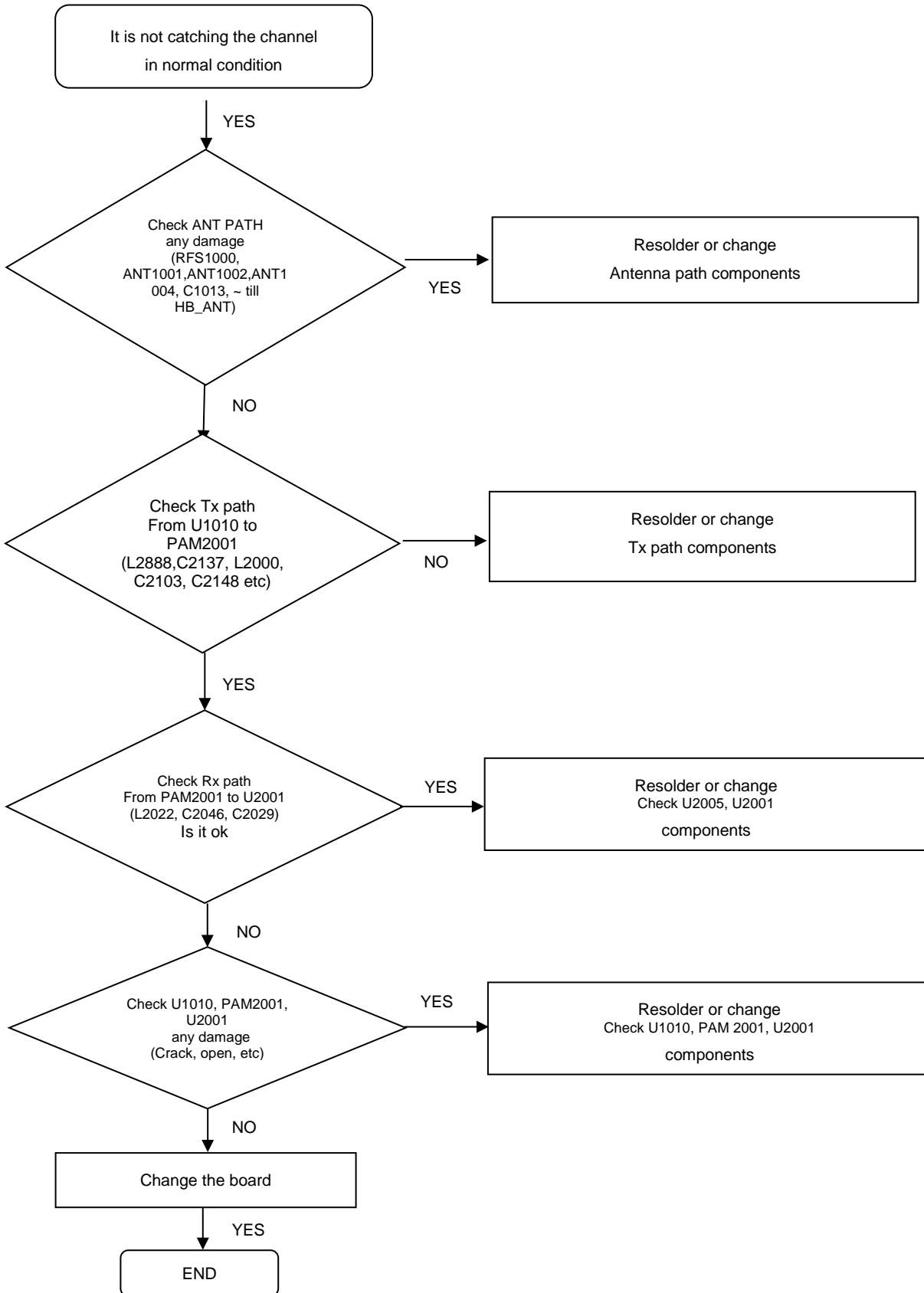
## 8. Level 3 Repair

### 8-4-22. MID BAND TX (DCS, PCS, W1, W2, W4, LTE 1, 2, 3, 4)



## 8. Level 3 Repair

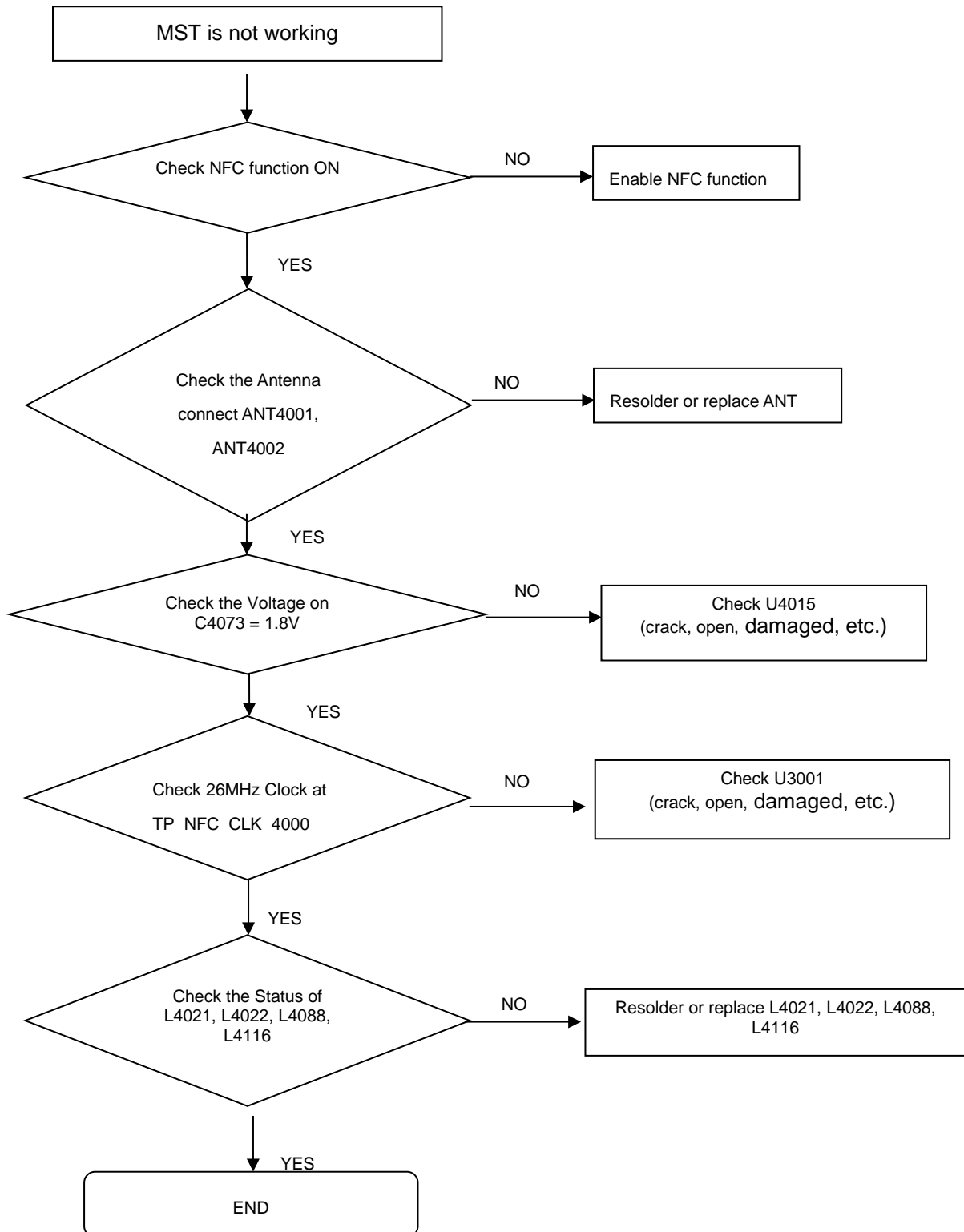
### 8-4-23. HIGH BAND TX (LTE 7,38,40,41)





## 8. Level 3 Repair

### 8-4-24. NFC

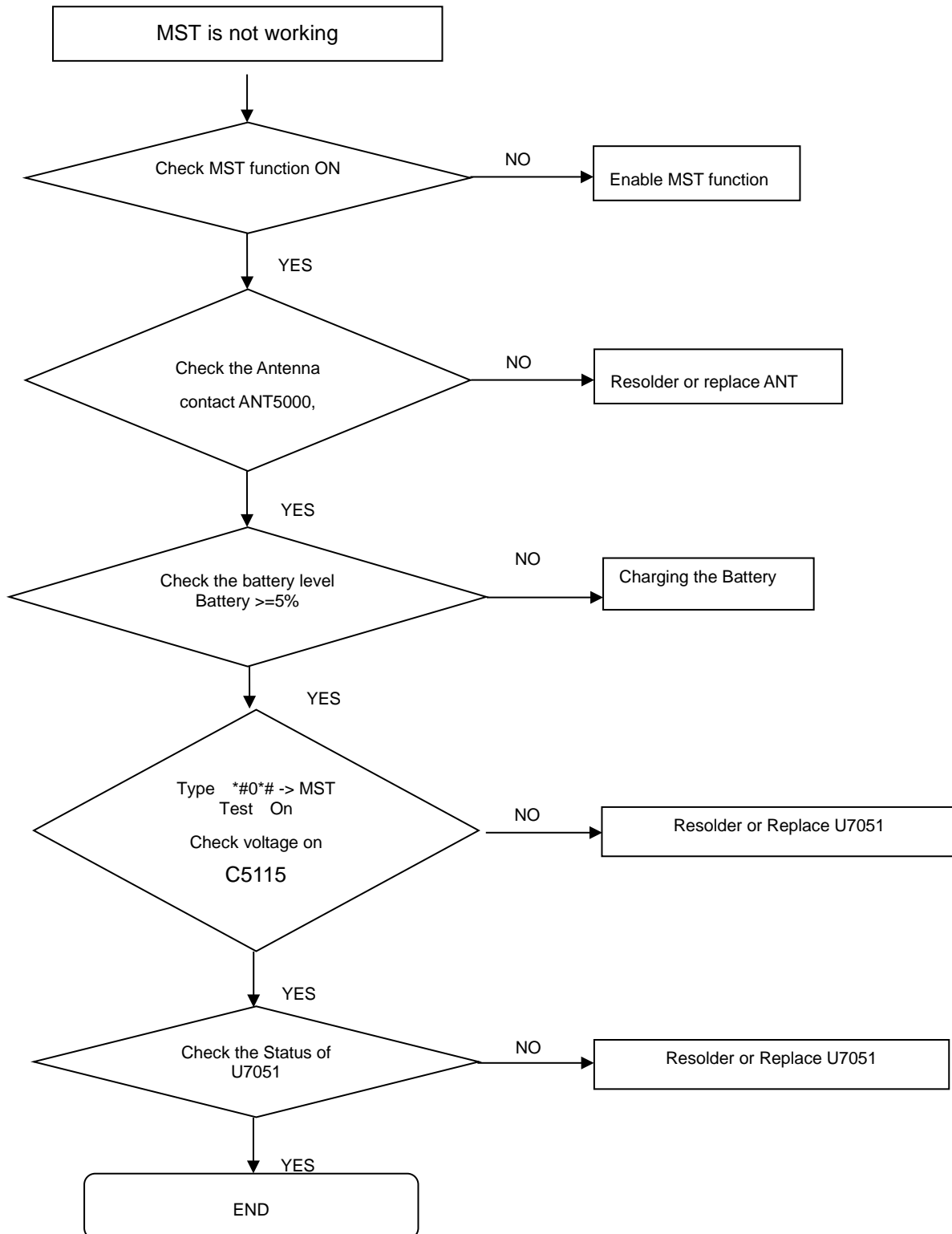


---

## 8. Level 3 Repair

---

### 8-4-25. MST



---

## 8. Level 3 Repair

---

### 8-4-26. FM radio part

