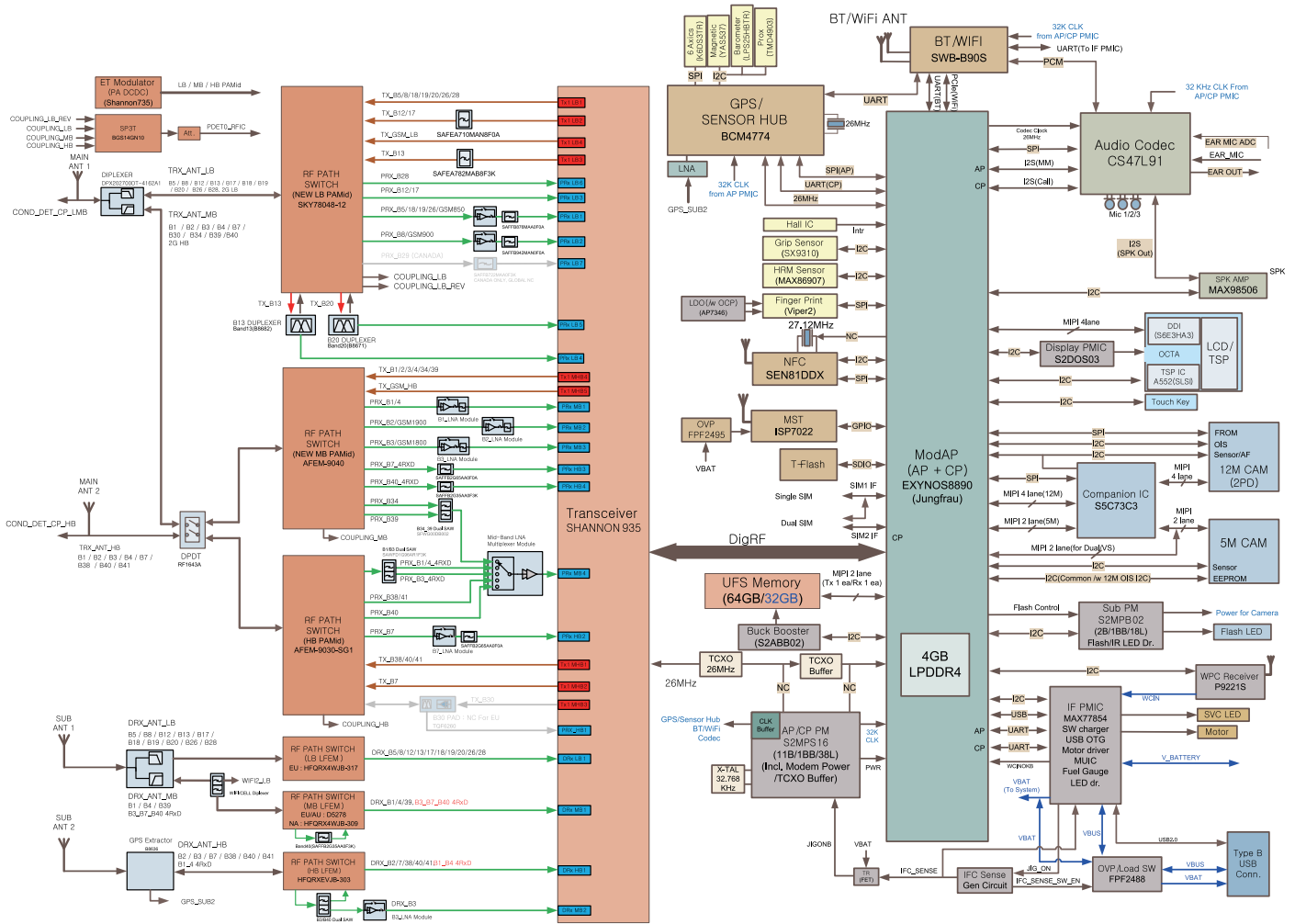


8. Level 3 Repair

8-1. Block Diagram



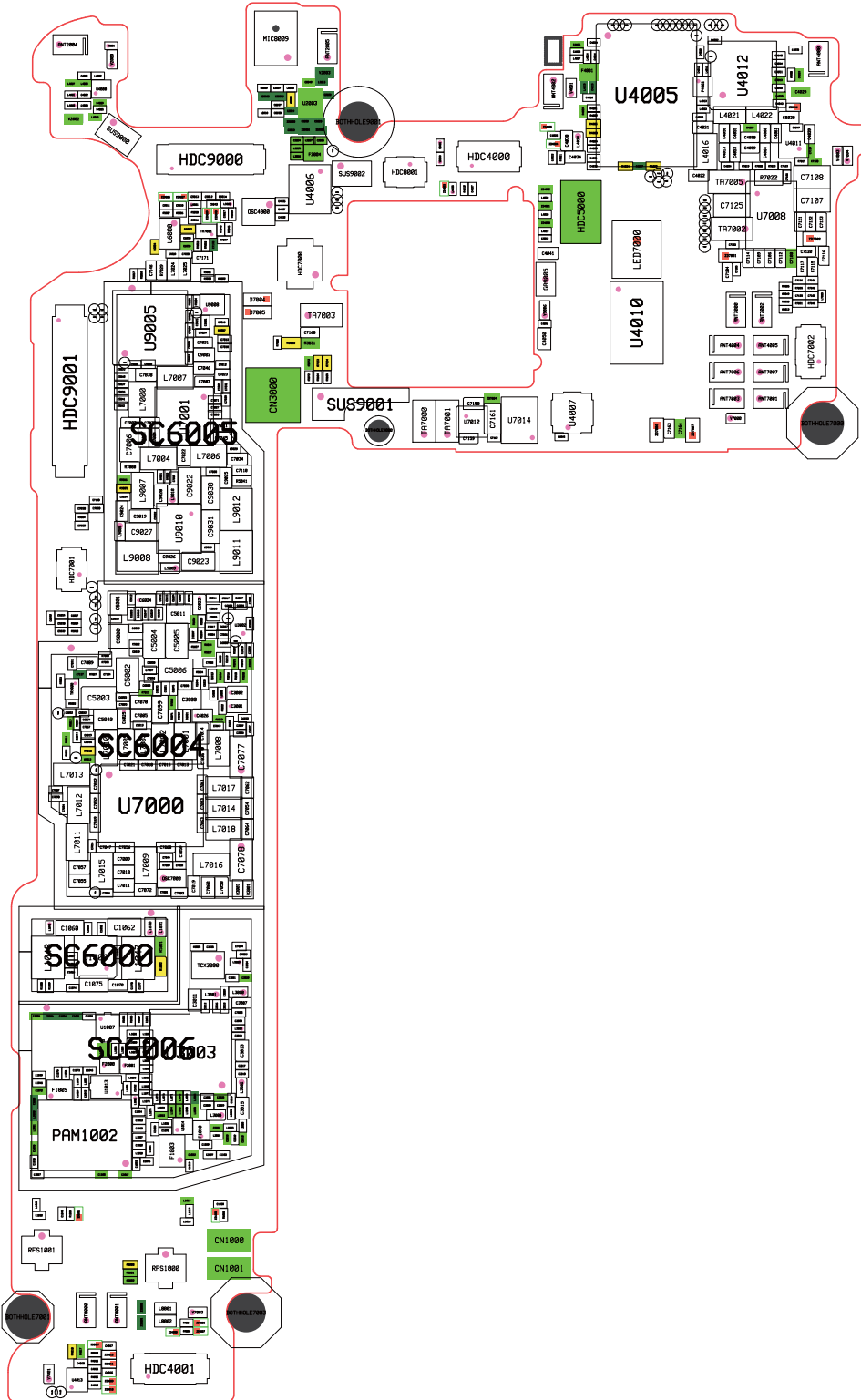
Confidential and proprietary-the contents in this service guide may change without prior notice

Distribution, transmission, or infringement of any content or data from this document without Samsung's written authorization is strictly prohibited.

8. Level 3 Repair

8-2. PCB Diagrams

8-2-1. Top

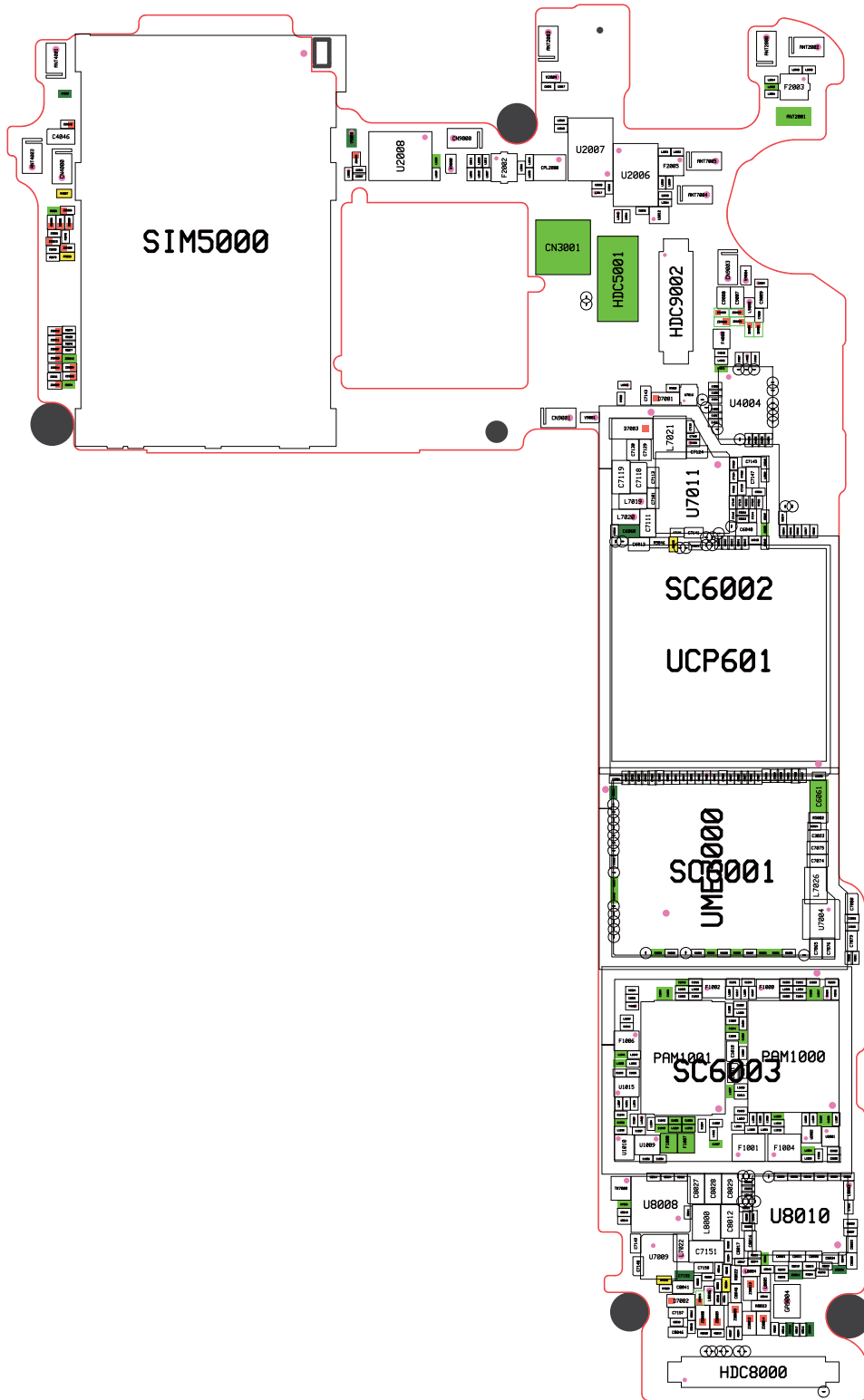


Confidential and proprietary-the contents in this service guide subject to change without prior notice

Distribution, transmission, or infringement of any content or data from this document without Samsung's written authorization is strictly prohibited.

8. Level 3 Repair

8-2-2. Bottom

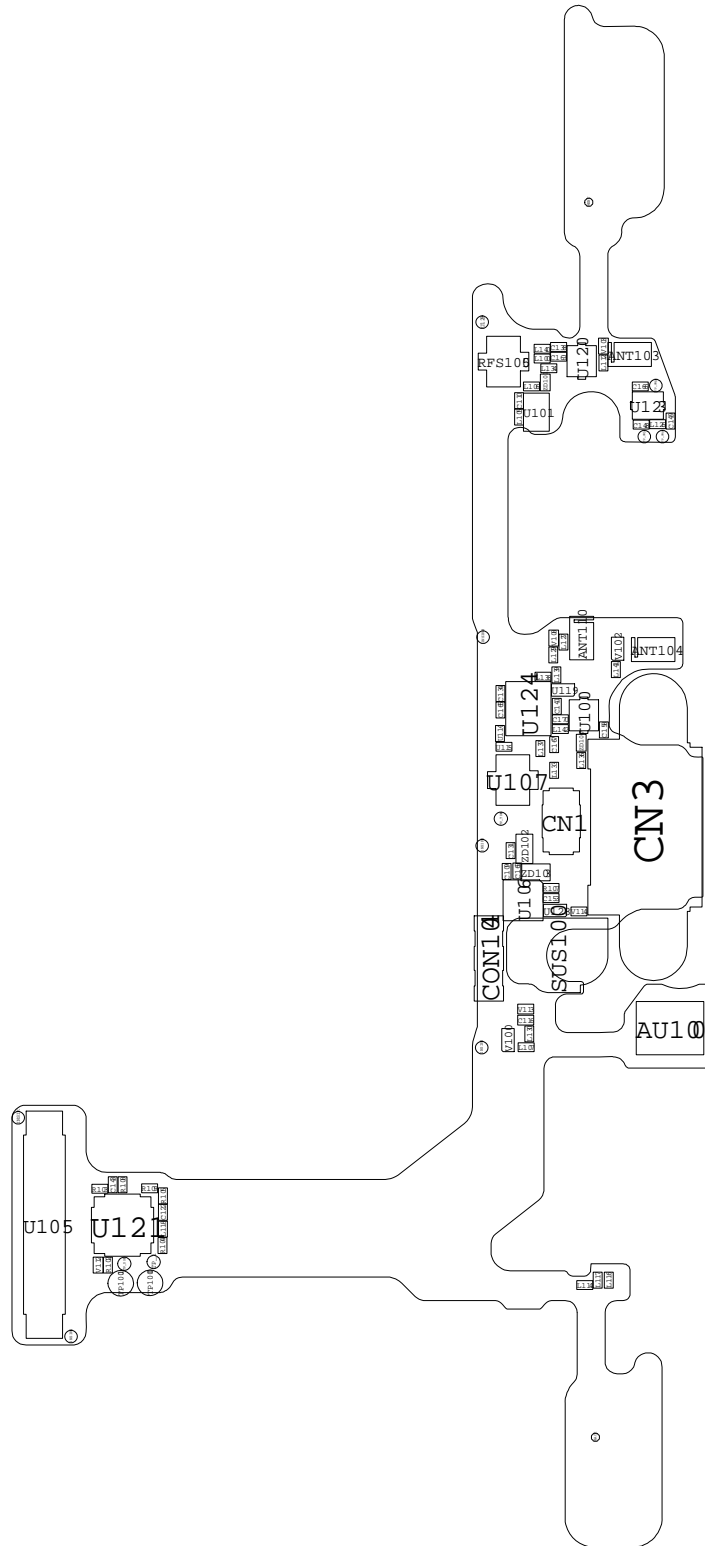


Confidential and proprietary-the contents in this service guide subject to change without prior notice

Distribution, transmission, or infringement of any content or data from this document without Samsung's written authorization is strictly prohibited.

8. Level 3 Repair

8-2-3. Sub_TOP

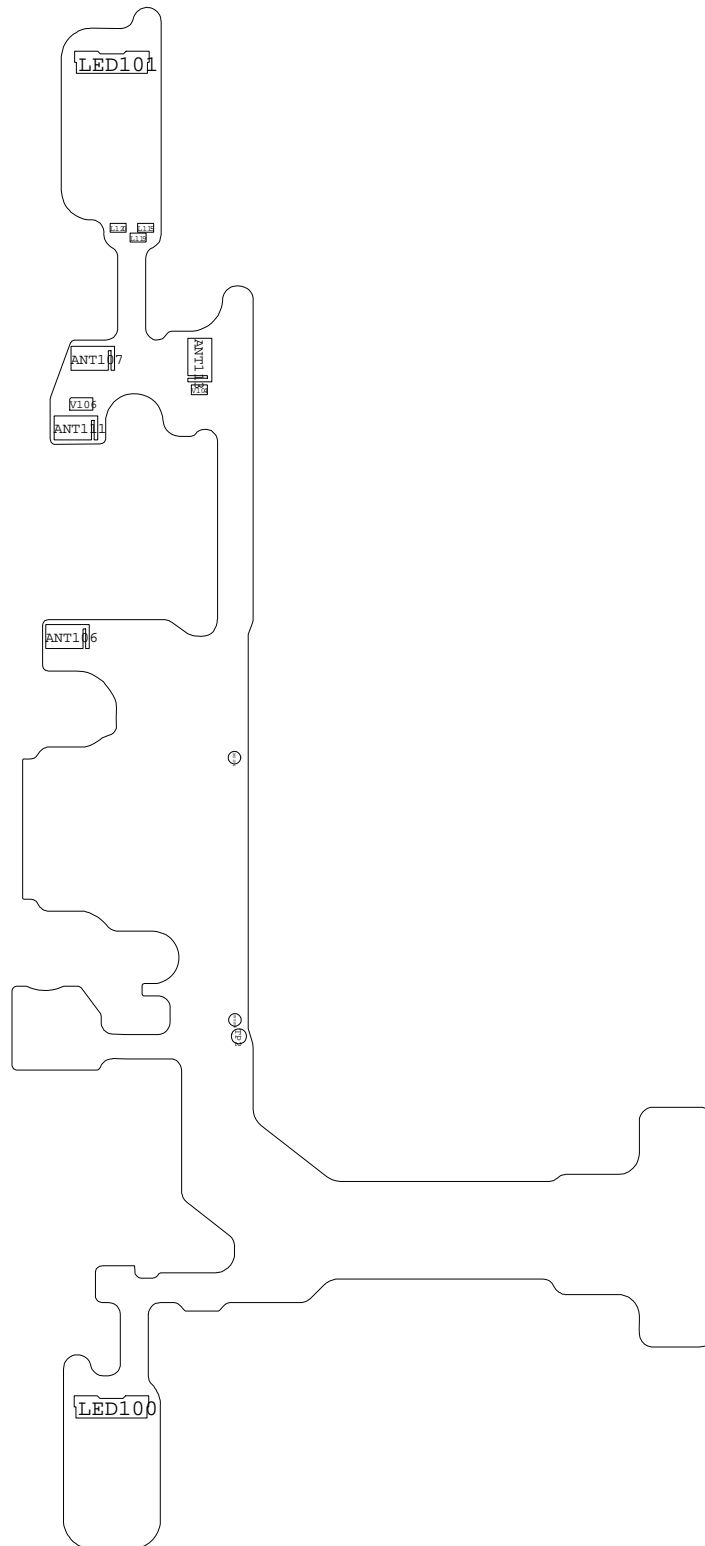


Confidential and proprietary-the contents in this service guide subject to change without prior notice

Distribution, transmission, or infringement of any content or data from this document without Samsung's written authorization is strictly prohibited.

8. Level 3 Repair

8-2-4. Sub_Bottom



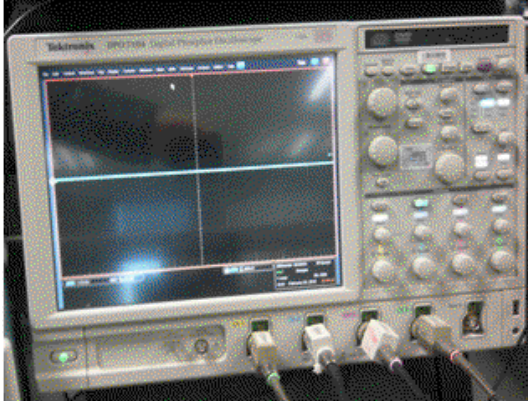
Confidential and proprietary-the contents in this service guide subject to change without prior notice

Distribution, transmission, or infringement of any content or data from this document without Samsung's written authorization is strictly prohibited.

8. Level 3 Repair

8-3. Flow Chart of Troubleshooting

Equipments



↑ Oscilloscope



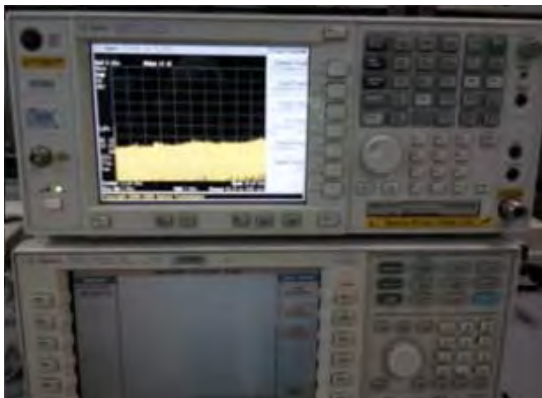
↑ Digital Multimeter



↑ Power Supply



↑ + driver, ESD Safe Tweezer



↑ 8960 & Spectrum Analyzer



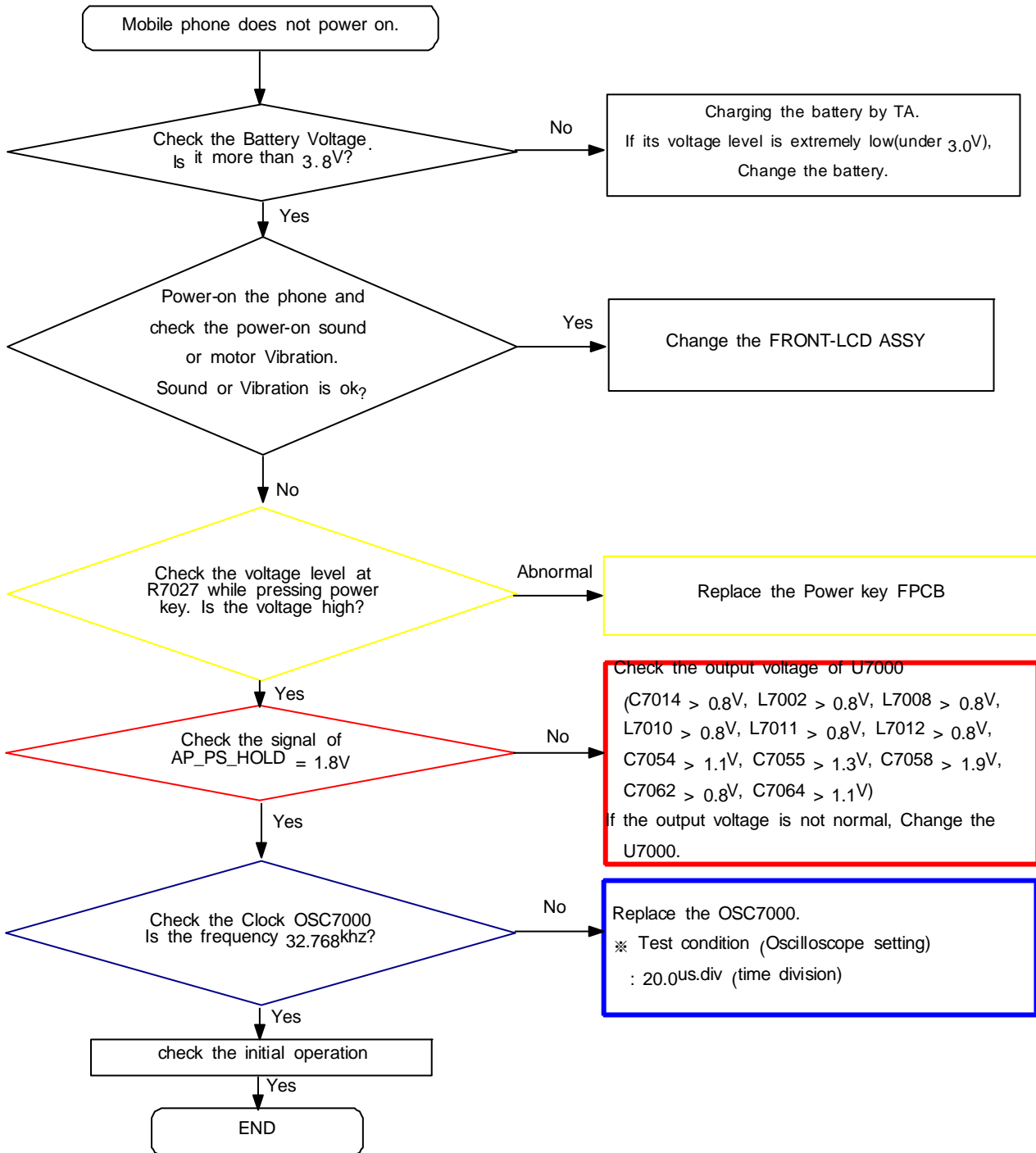
↑ Soldering iron

Confidential and proprietary-the contents in this service guide subject to change without prior notice

Distribution, transmission, or infringement of any content or data from this document without Samsung's written authorization is strictly prohibited.

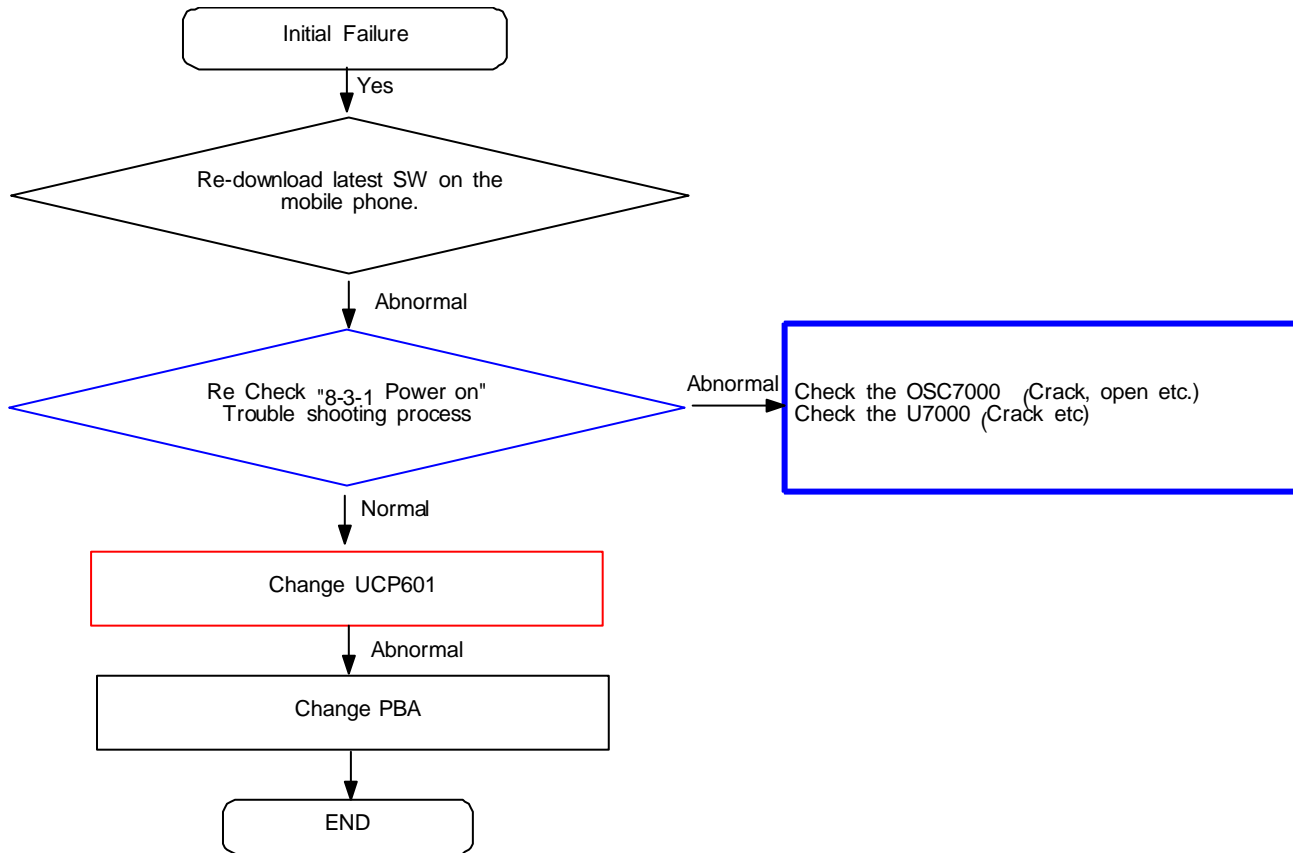
8. Level 3 Repair

8-3-1. Power On



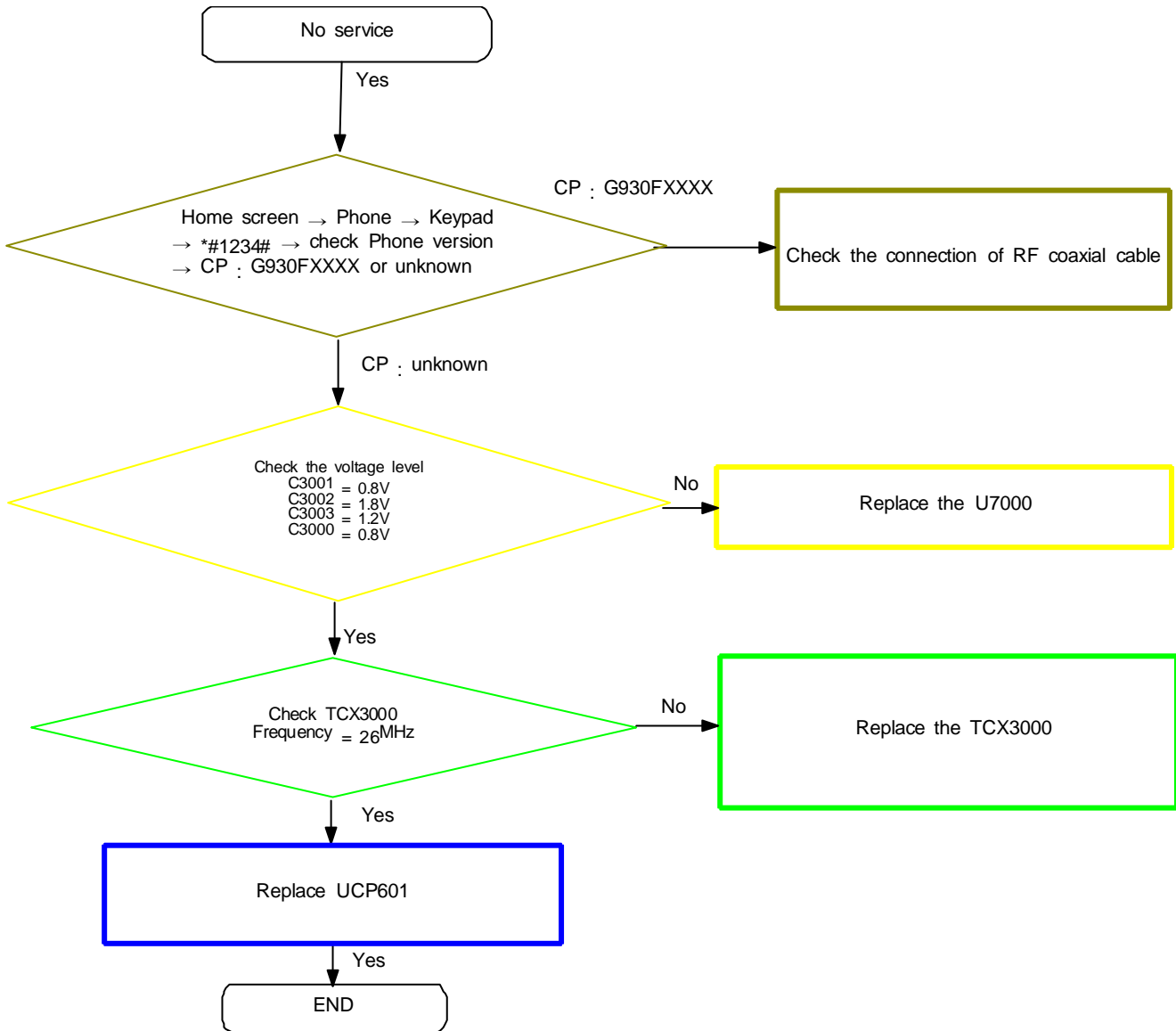
8. Level 3 Repair

8-3-2. Initial



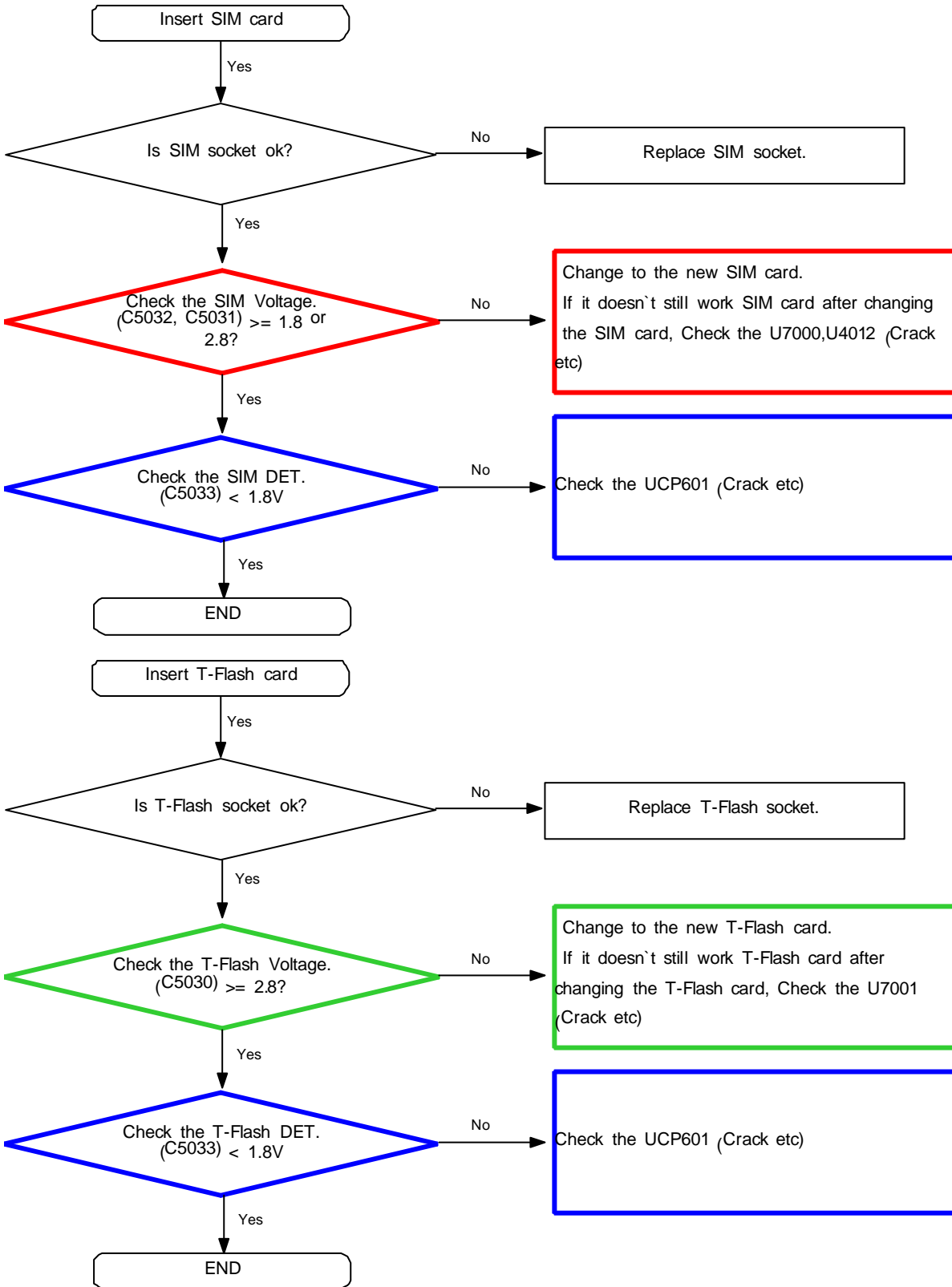
8. Level 3 Repair

8-3-3. No Service



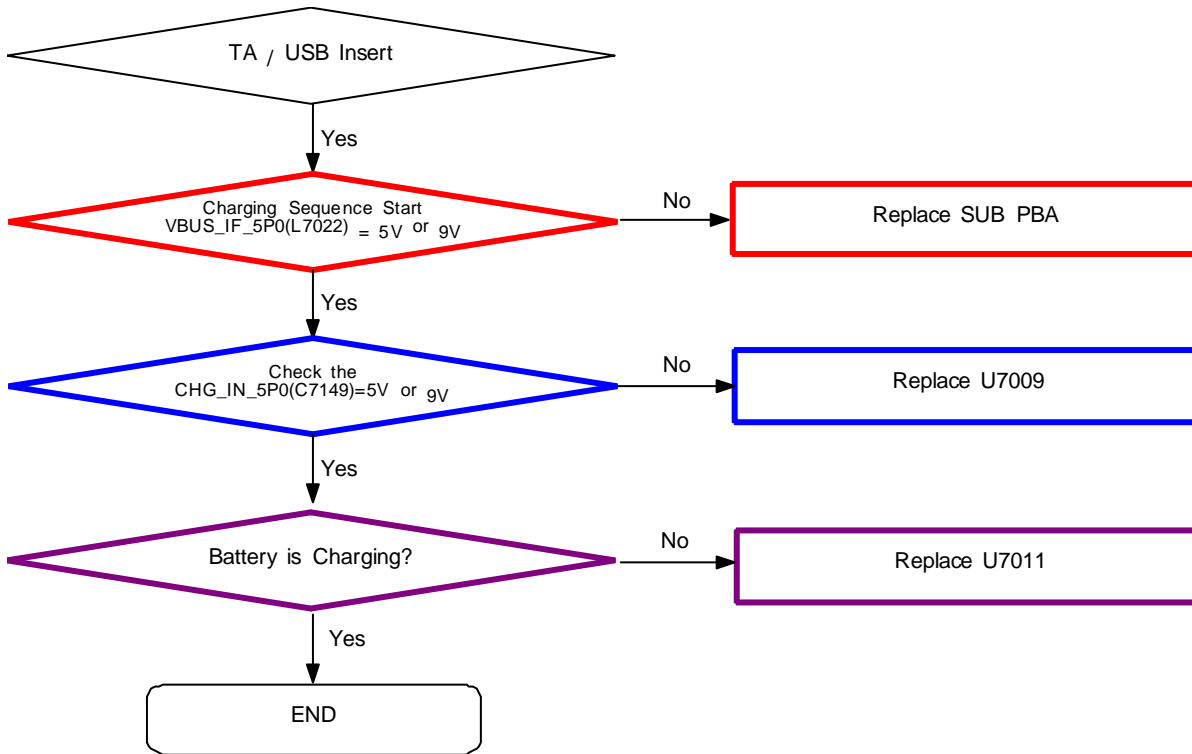
8. Level 3 Repair

8-3-4. SIM & T-Flash Part



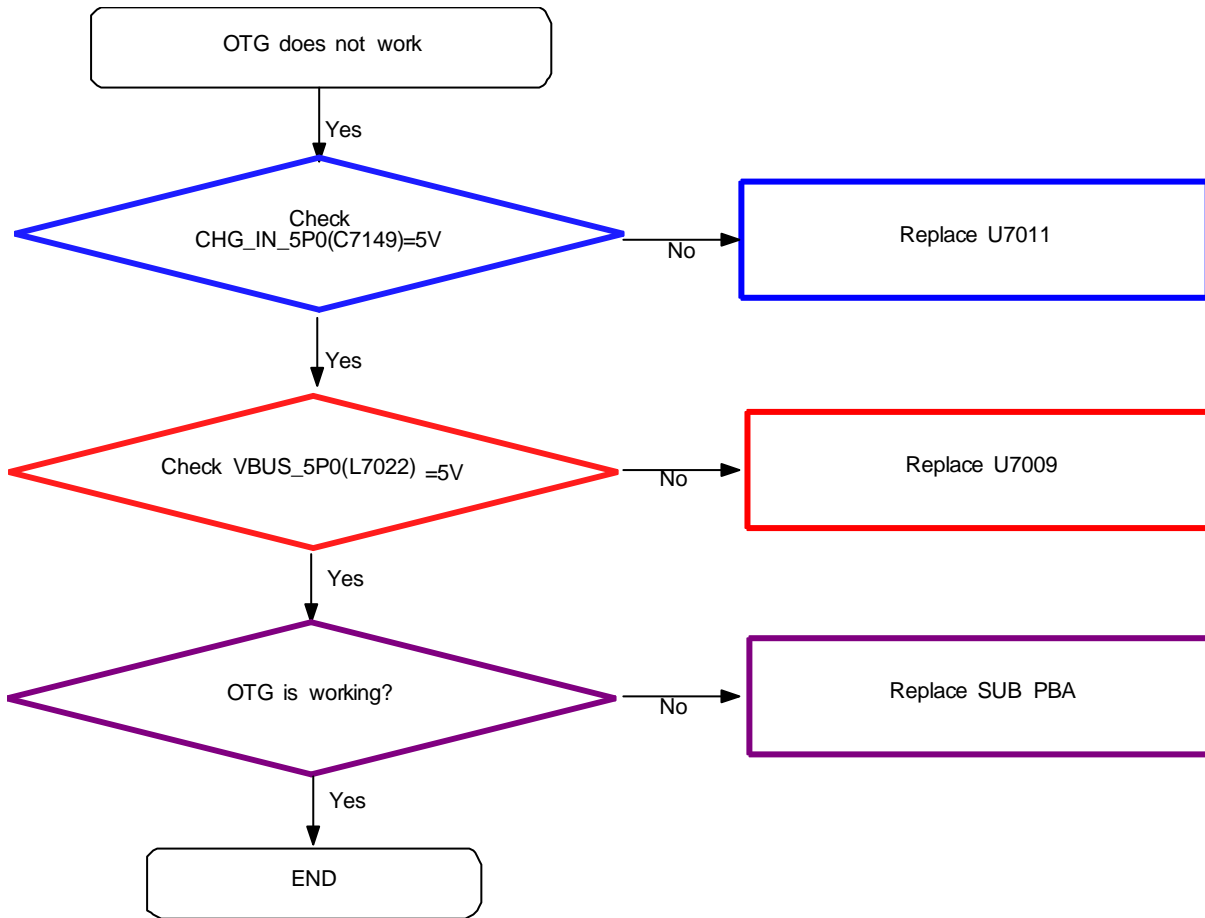
8. Level 3 Repair

8-3-5. Charging Part



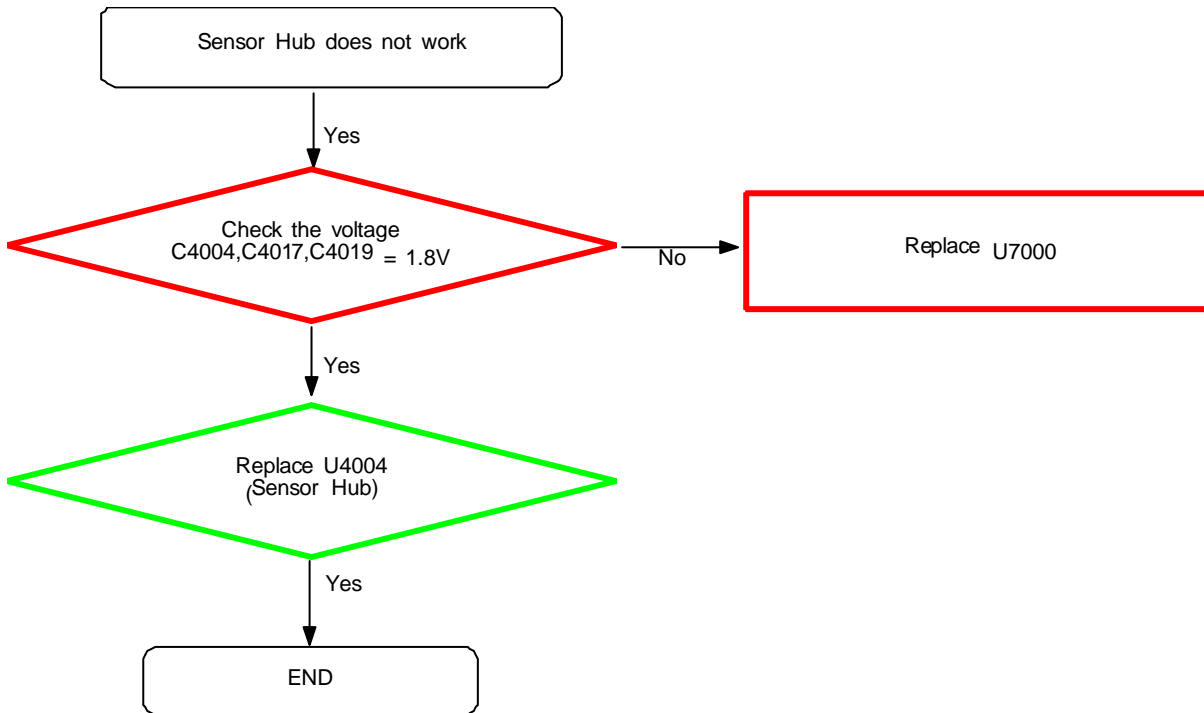
8. Level 3 Repair

8-3-6. OTG



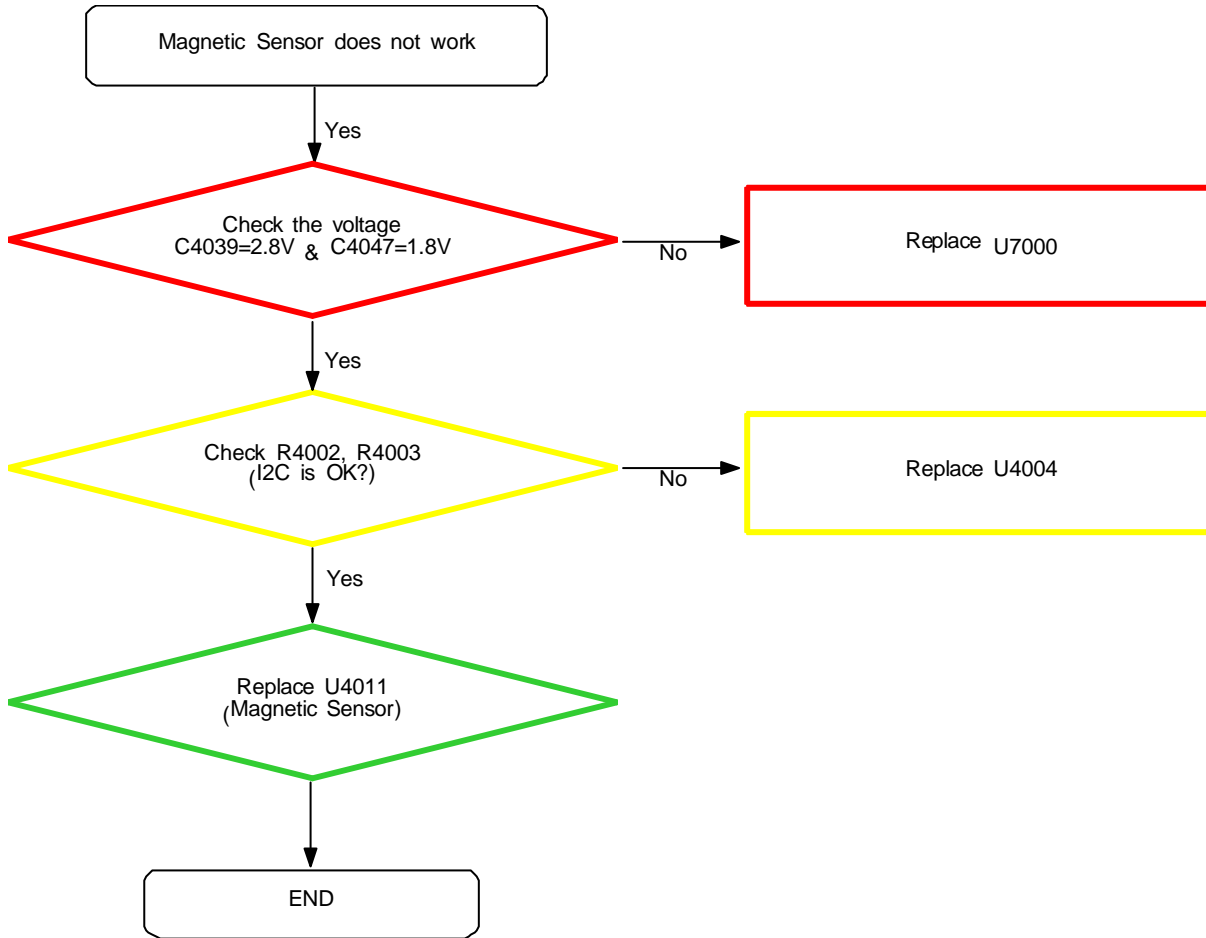
8. Level 3 Repair

8-3-7-1. Sensor Hub



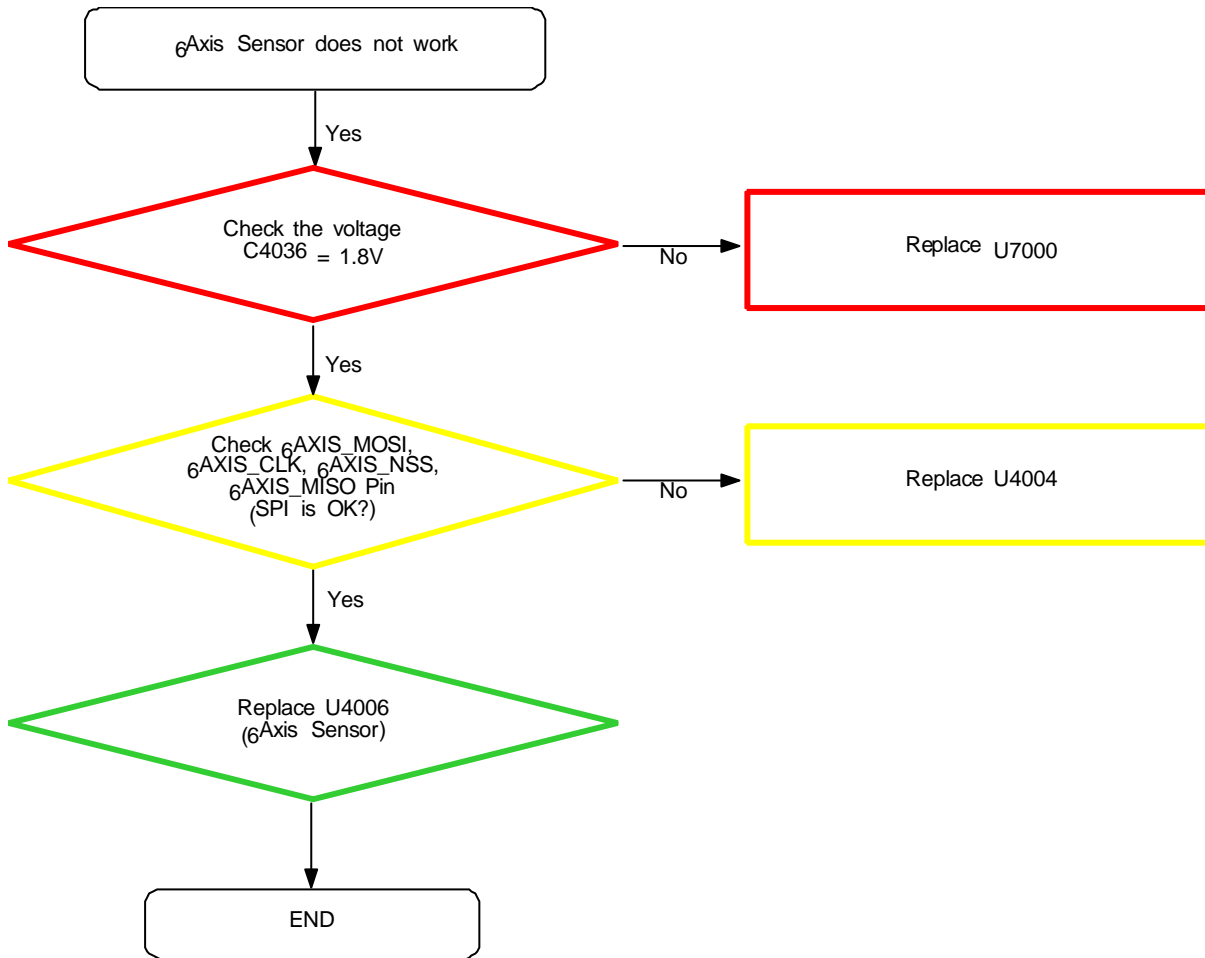
8. Level 3 Repair

8-3-7-2. Magnetic Sensor



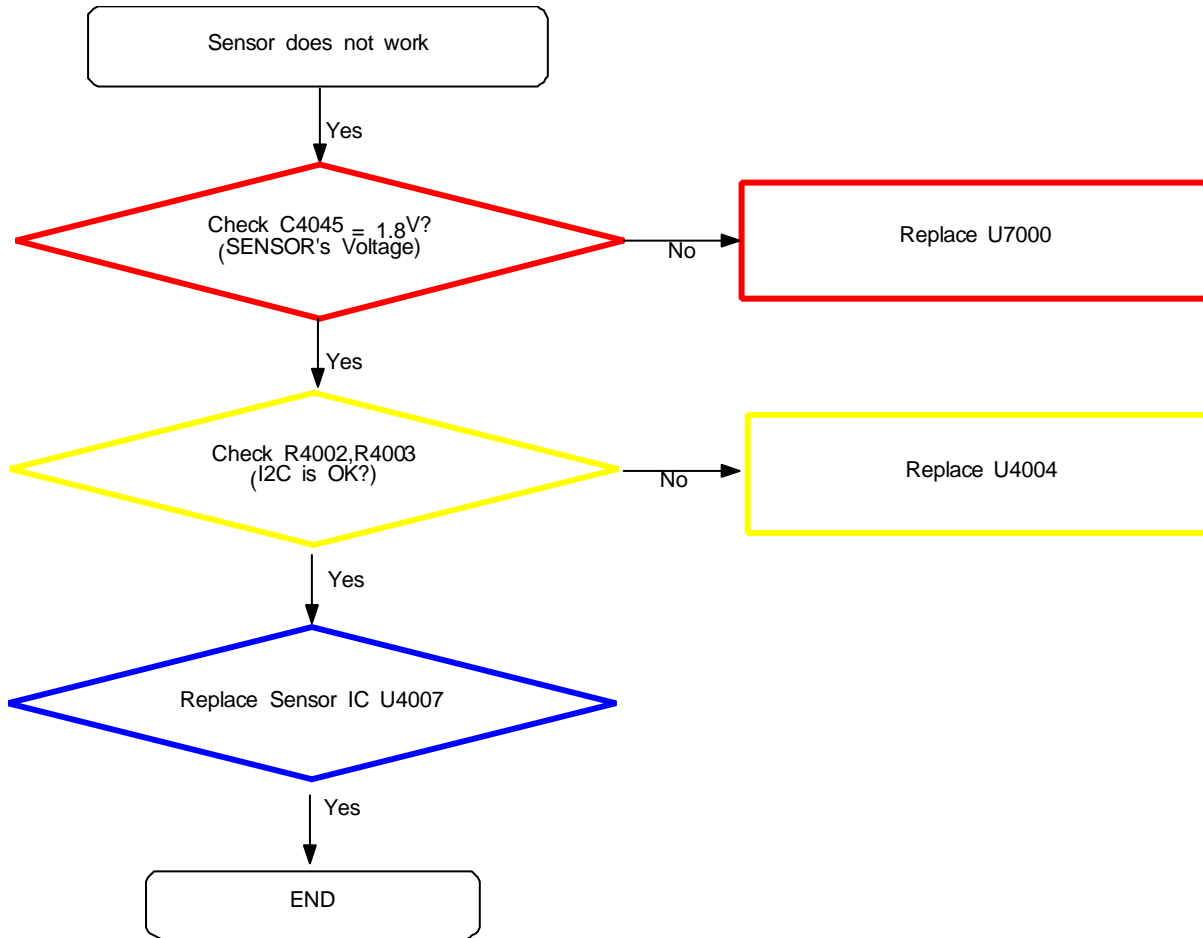
8. Level 3 Repair

8-3-7-3. 6Axis Sensor



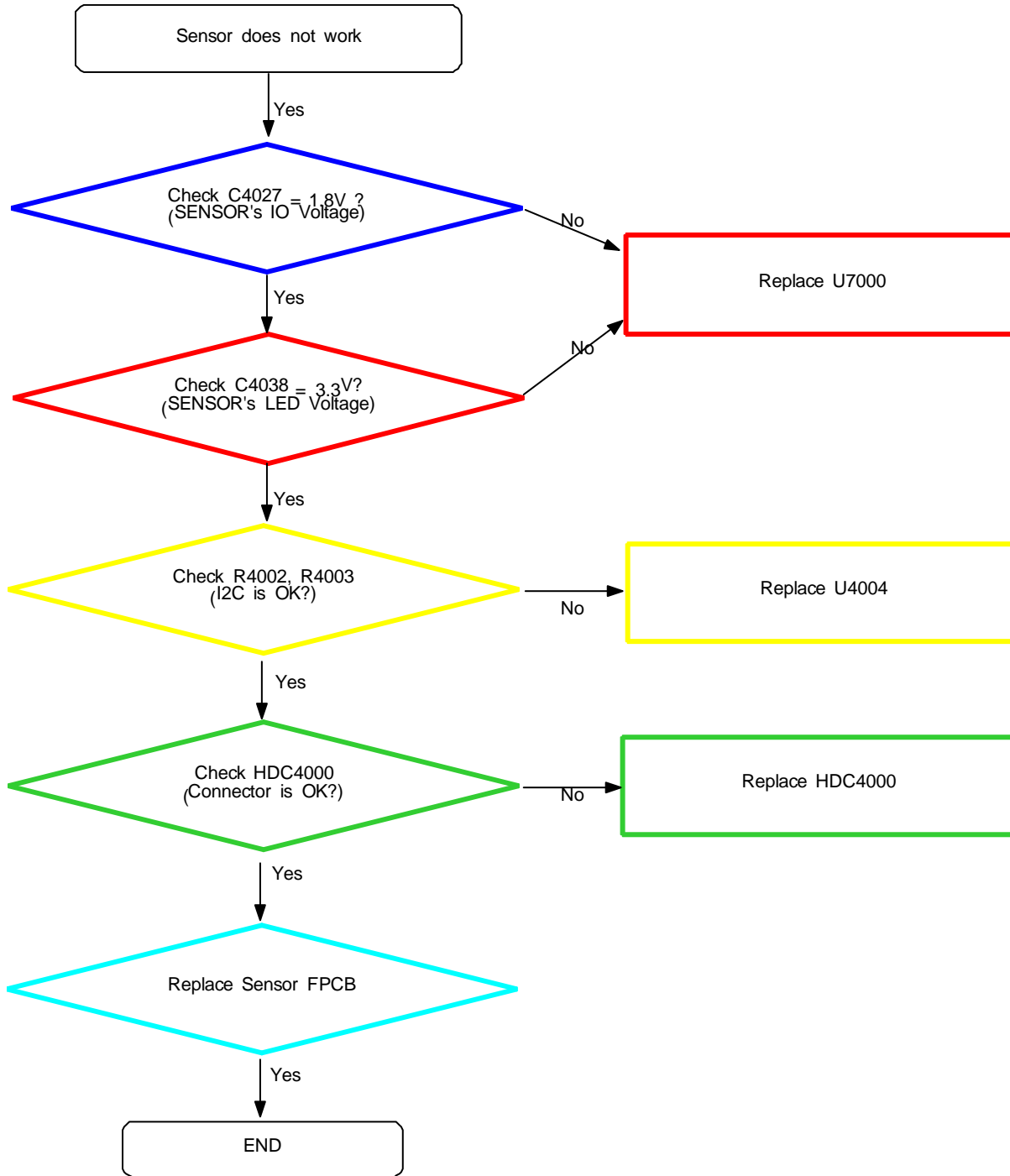
8. Level 3 Repair

8-3-7-4. Barometer sensor



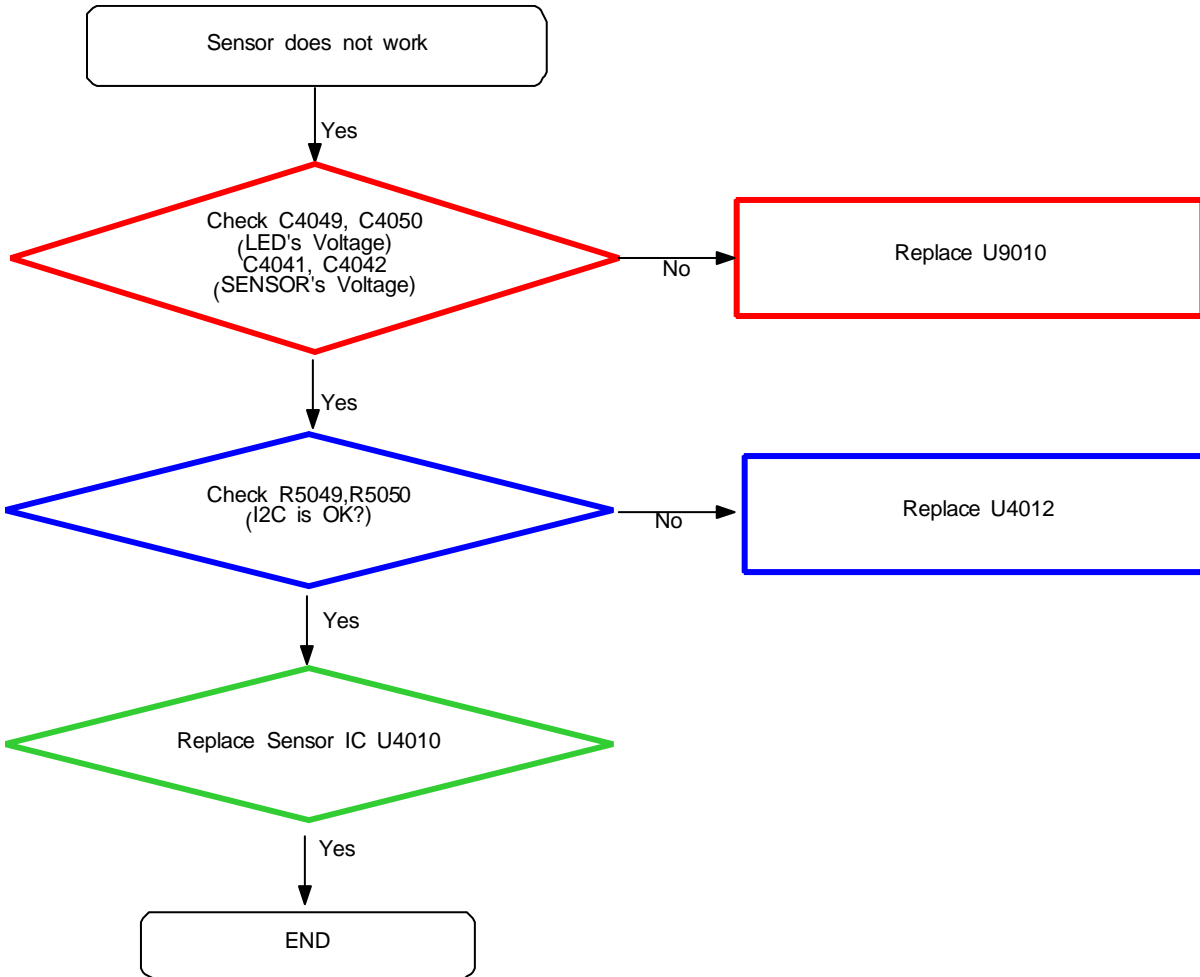
8. Level 3 Repair

8-3-7-5. Proximity+RGB sensor



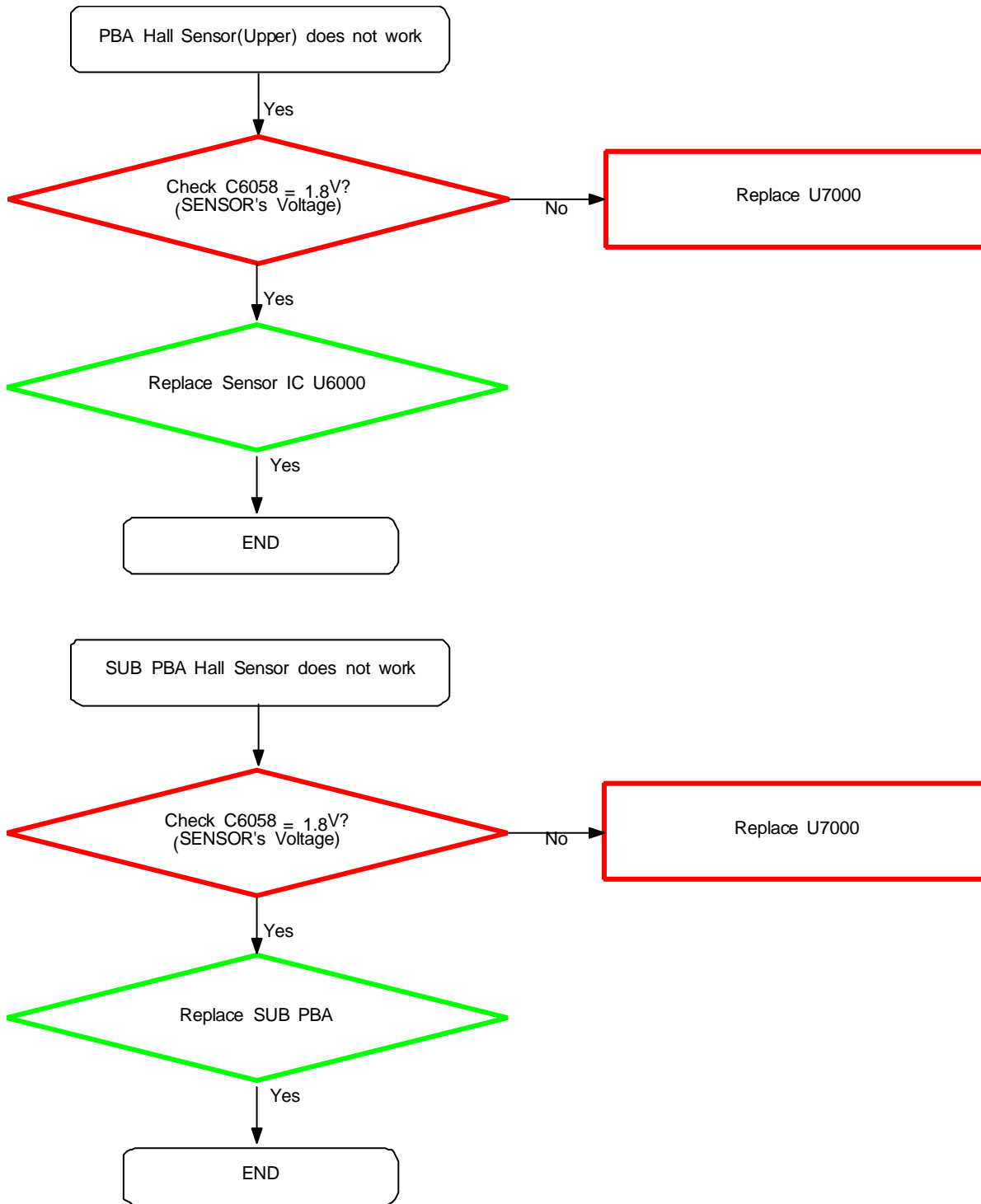
8. Level 3 Repair

8-3-7-6. HRM Sensor



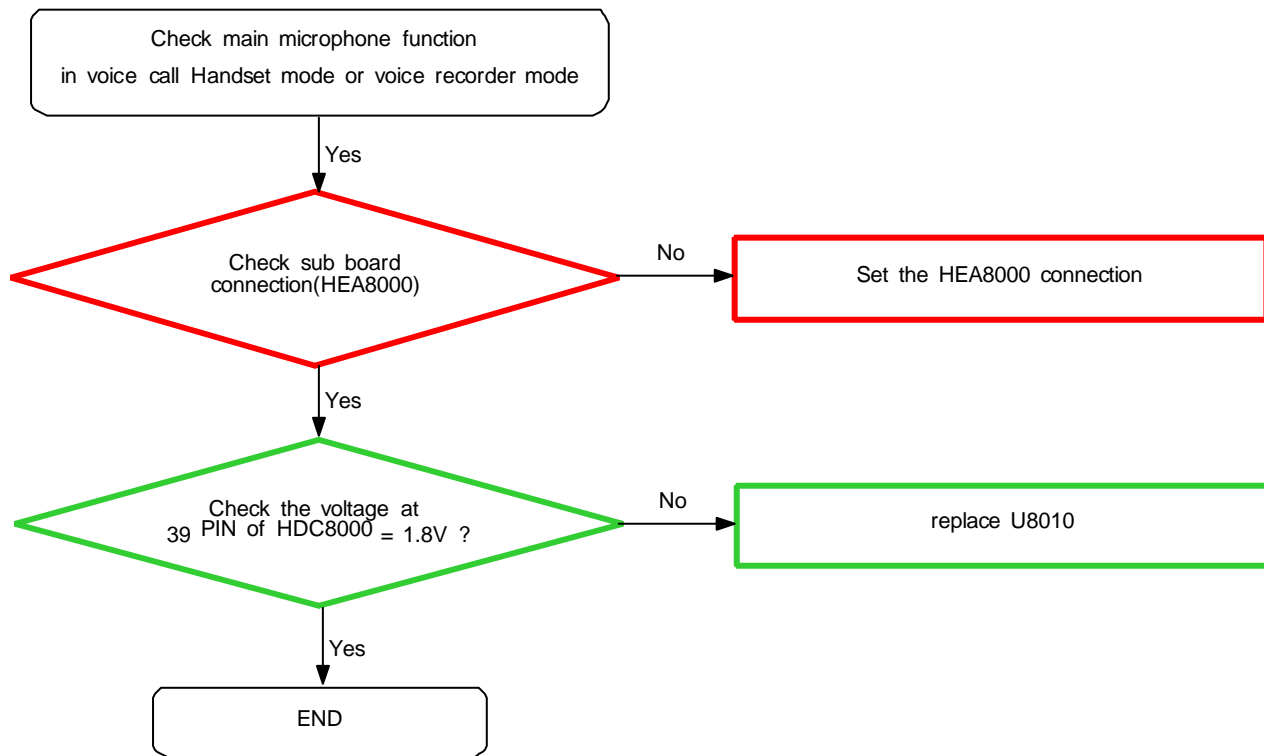
8. Level 3 Repair

8-3-7-7. Hall Sensor



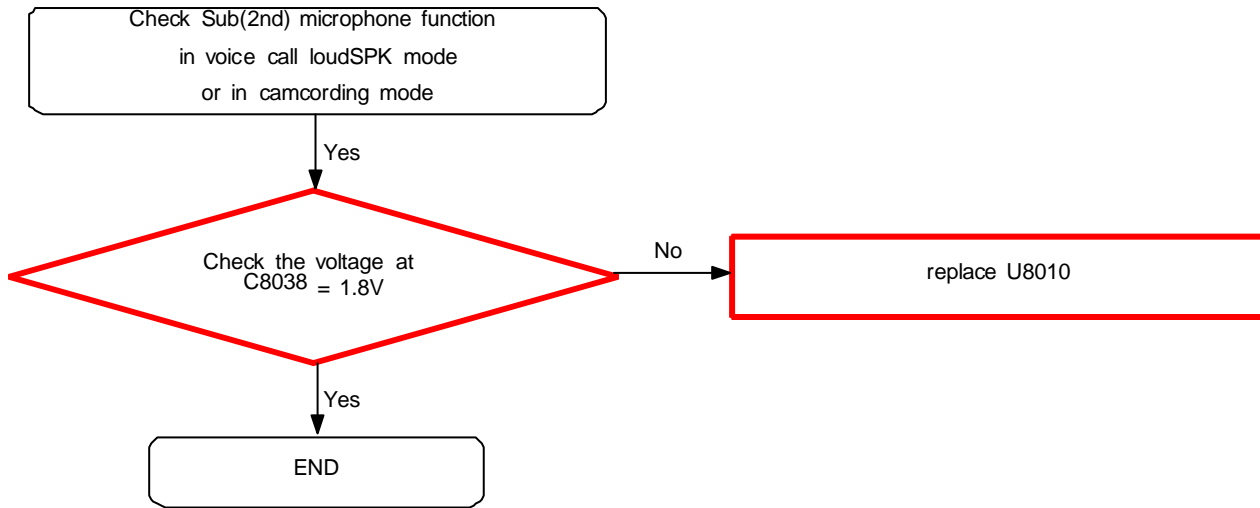
8. Level 3 Repair

8-3-8-1. Microphone Part - Main MIC



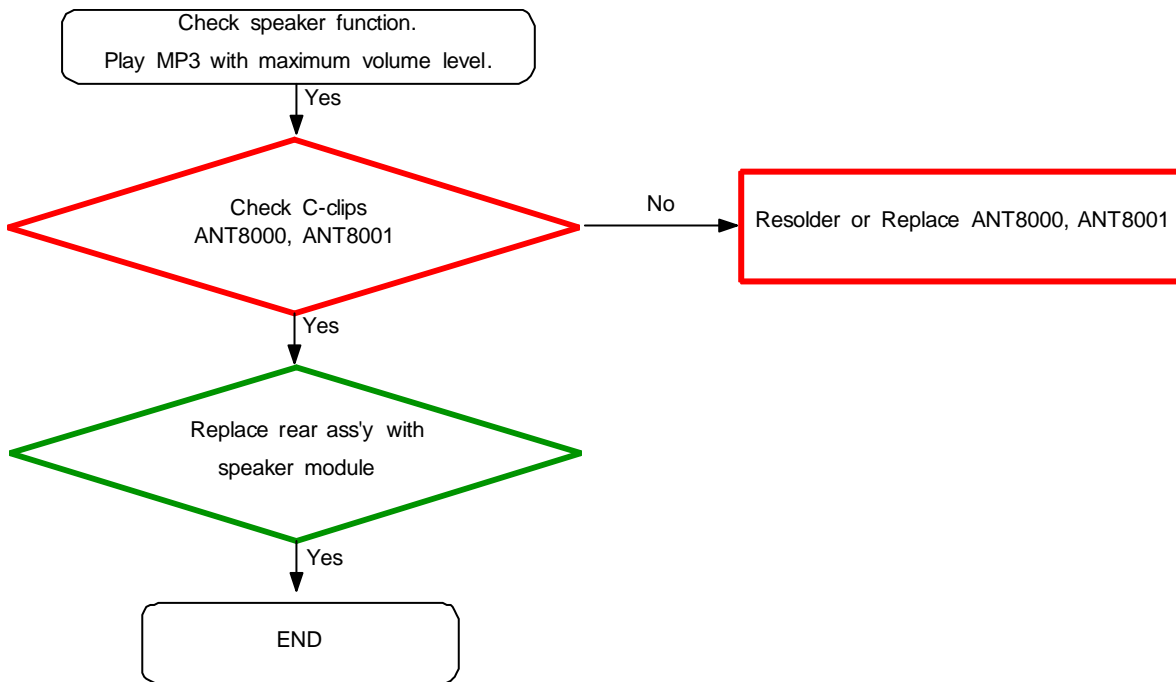
8. Level 3 Repair

8-3-8-2. Microphone Part - Sub(2nd) MIC



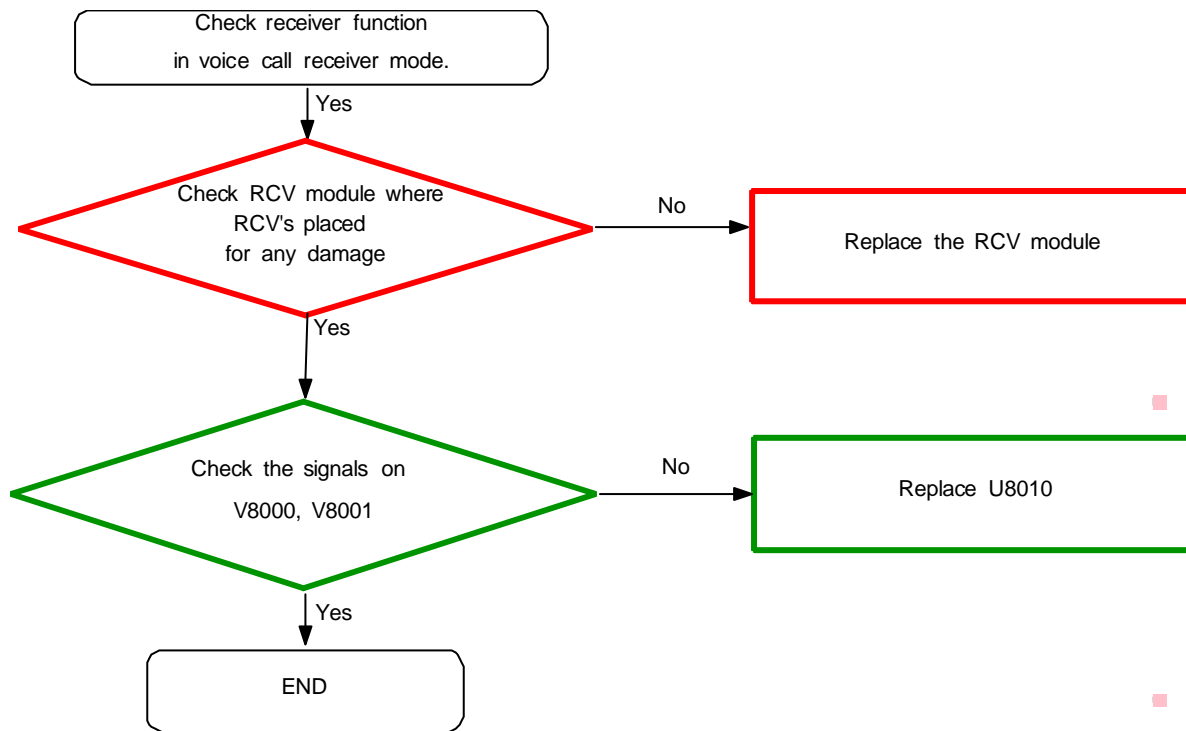
8. Level 3 Repair

8-3-9. Speaker Part



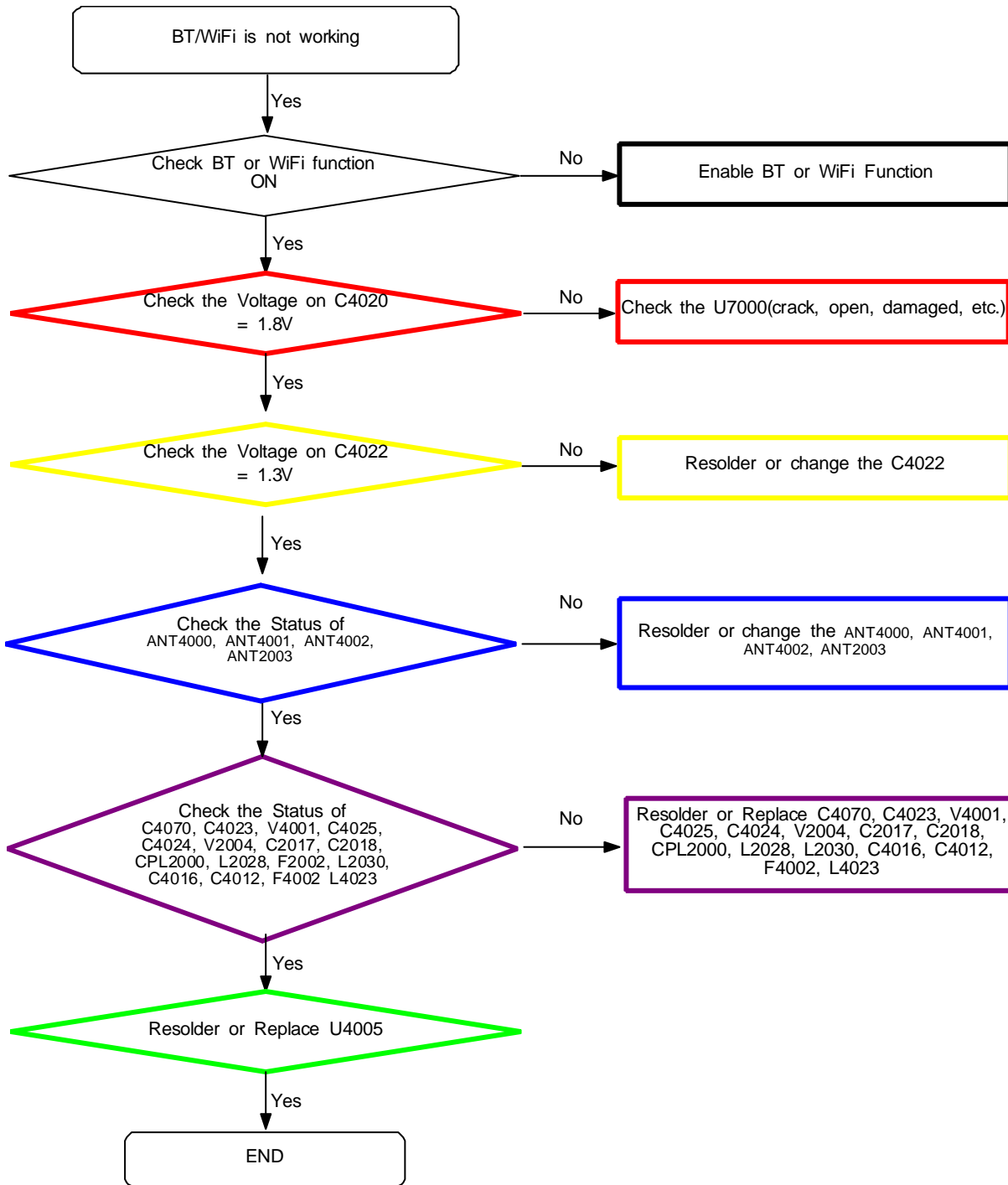
8. Level 3 Repair

8-3-10. Receiver Part



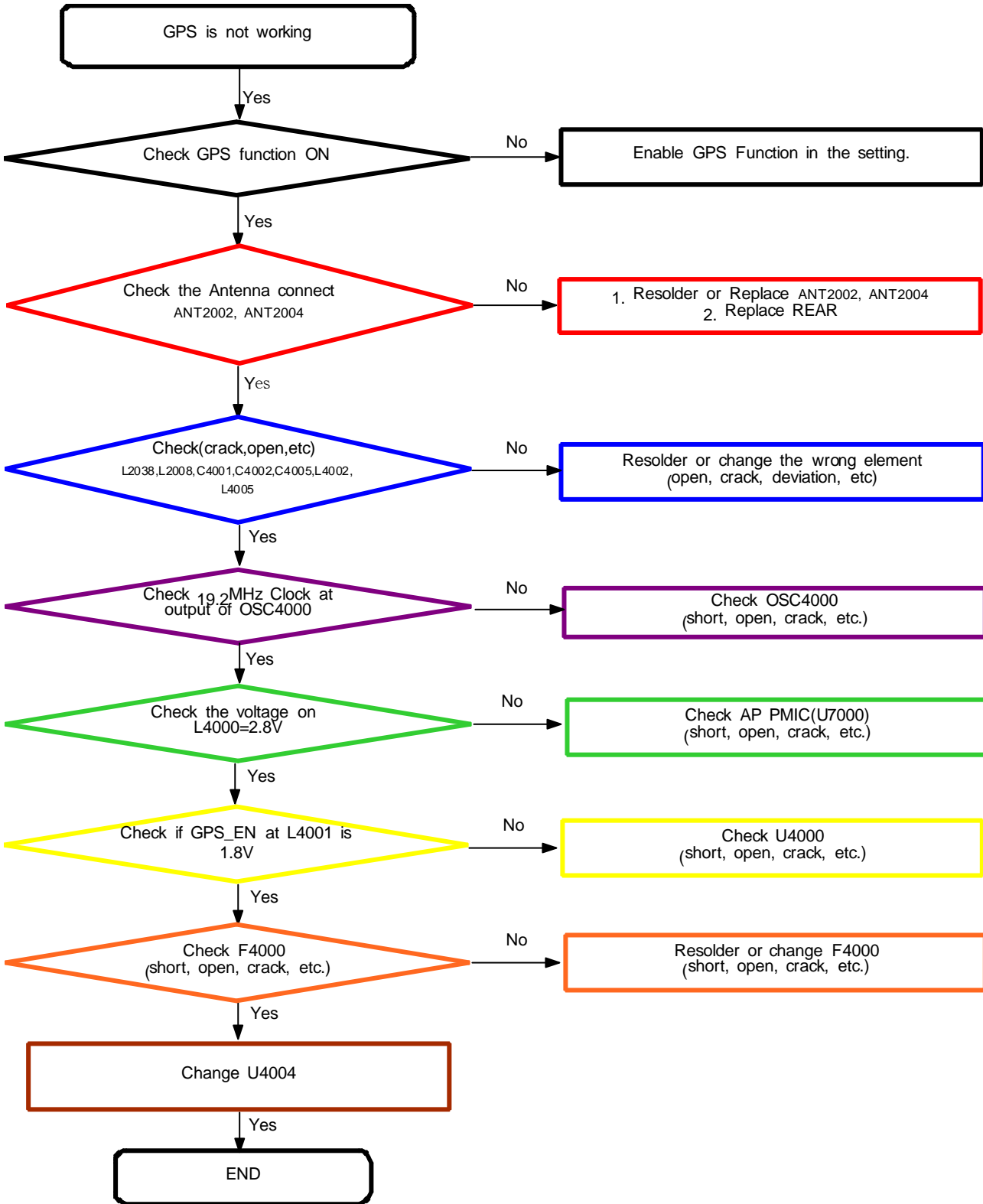
8. Level 3 Repair

8-3-11. BT/WIFI



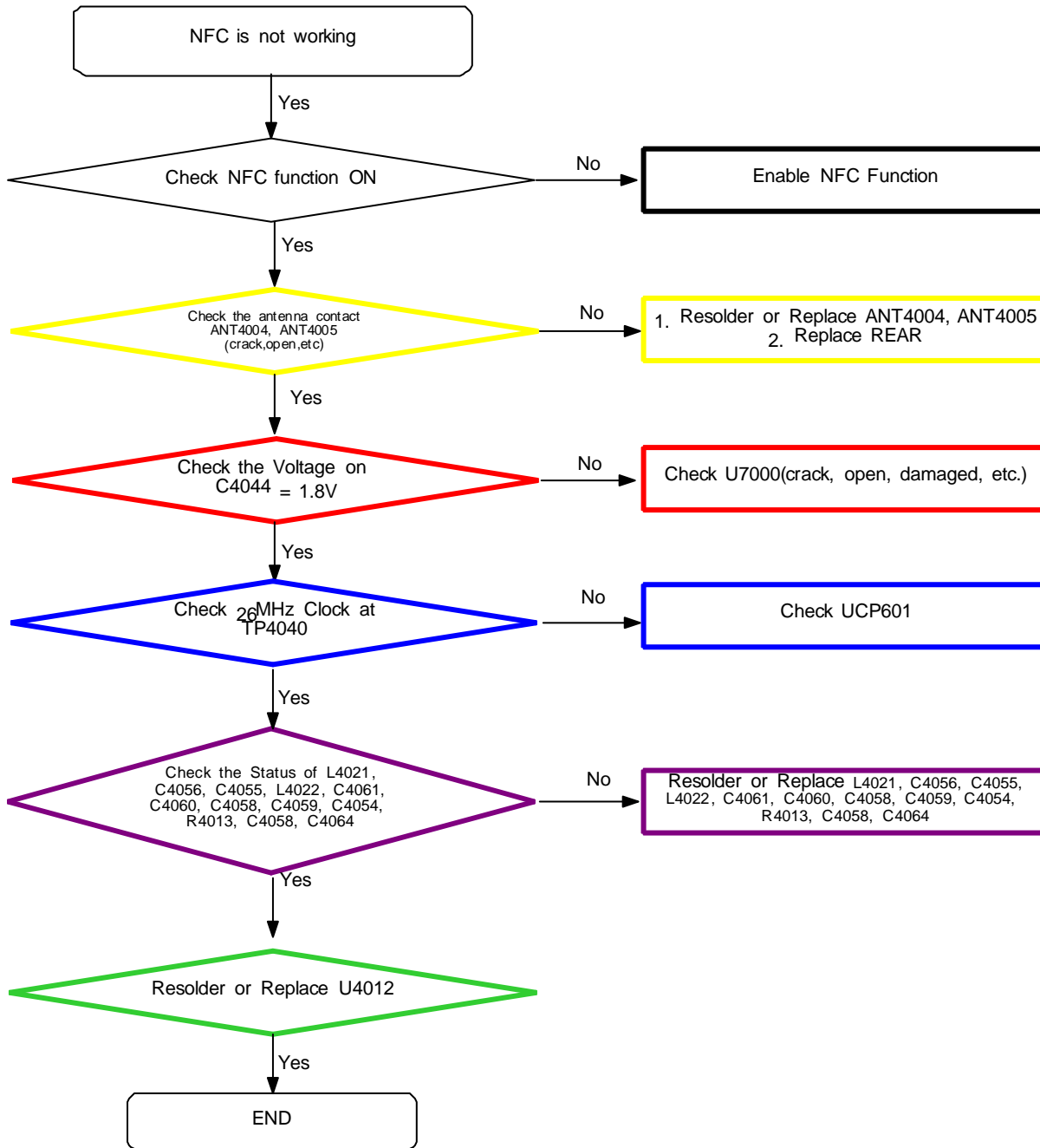
8. Level 3 Repair

8-3-12. GPS



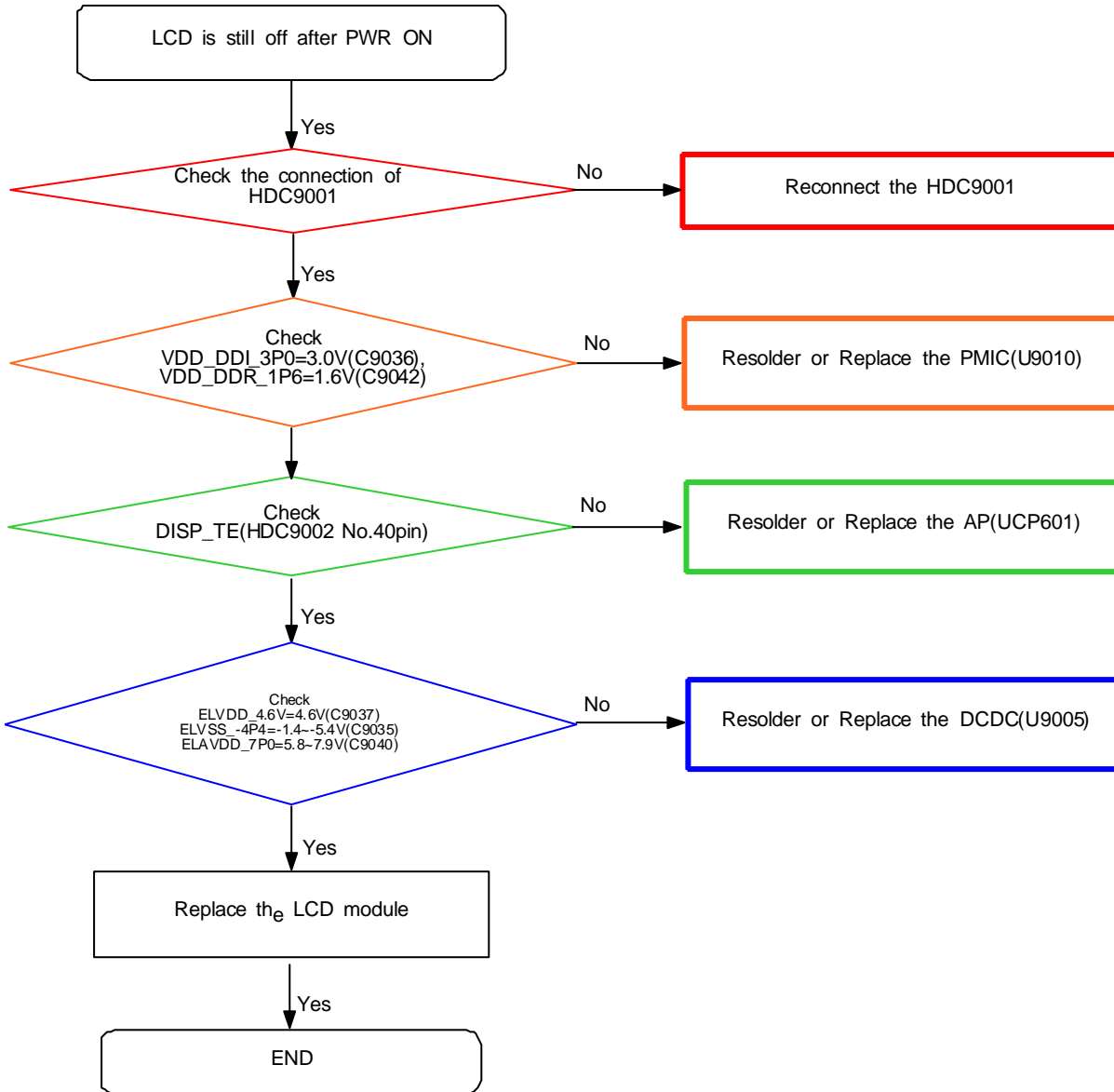
8. Level 3 Repair

8-3-13. NFC



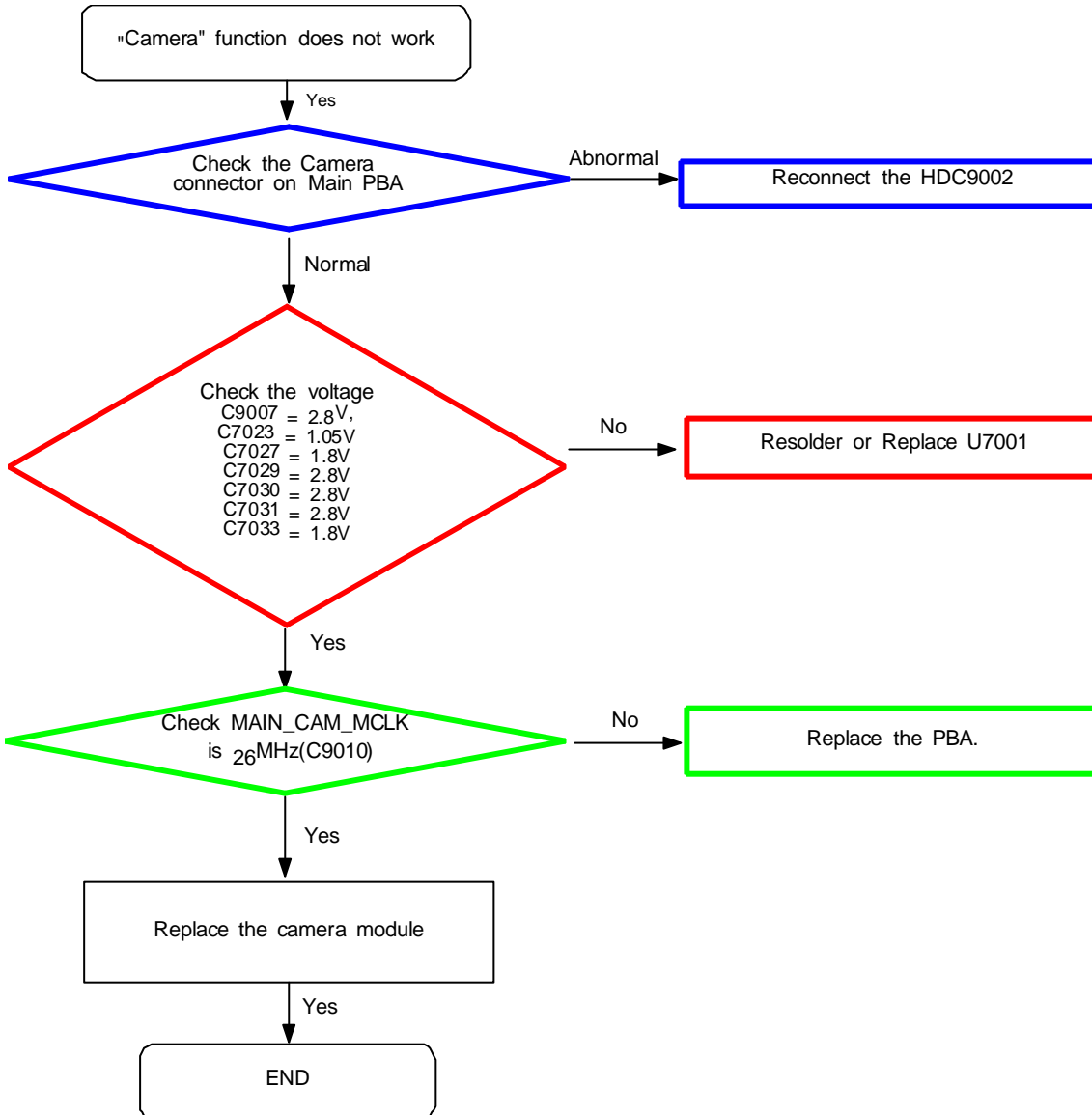
8. Level 3 Repair

8-3-14. Display



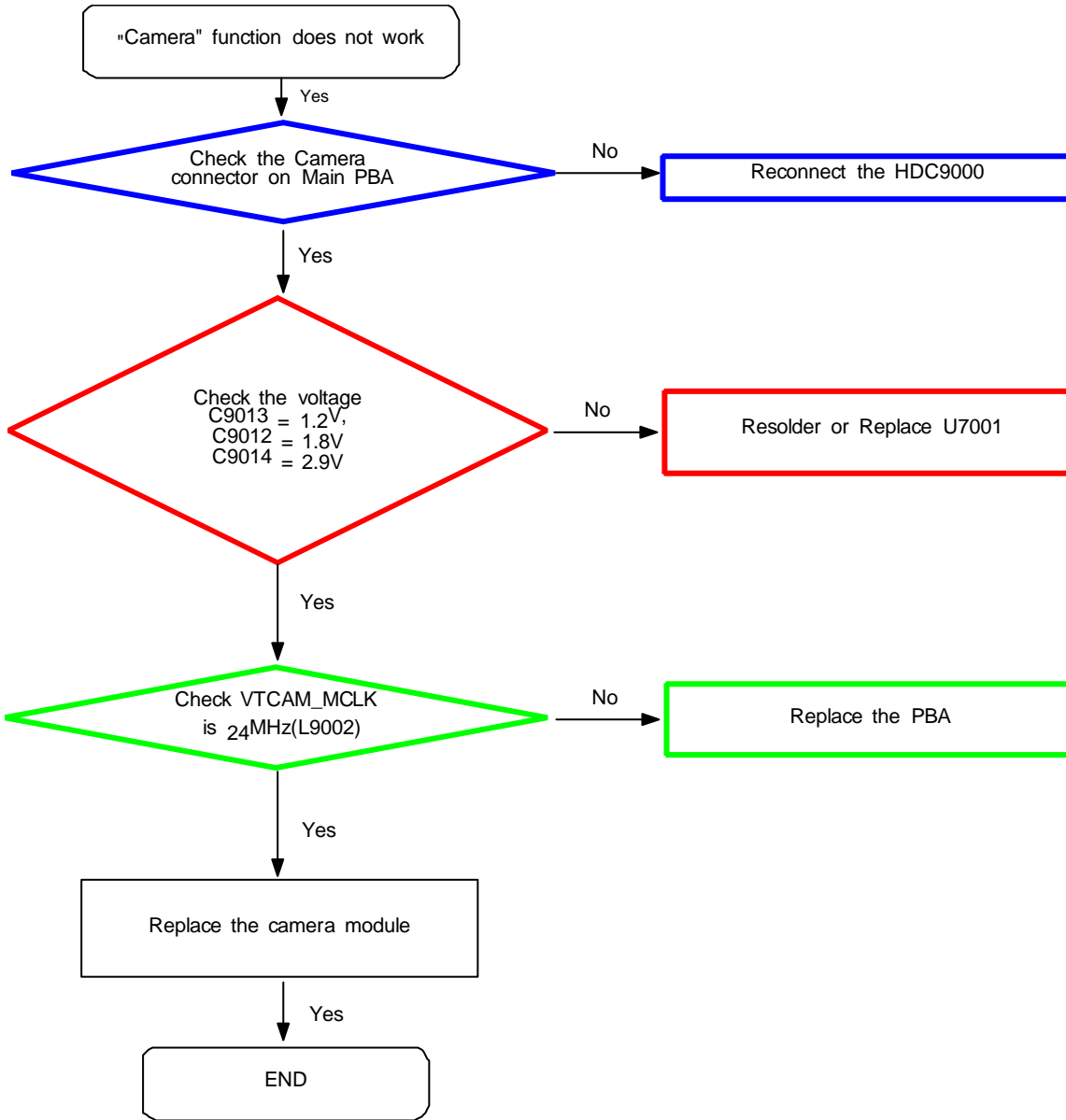
8. Level 3 Repair

8-3-15. 12M CAM



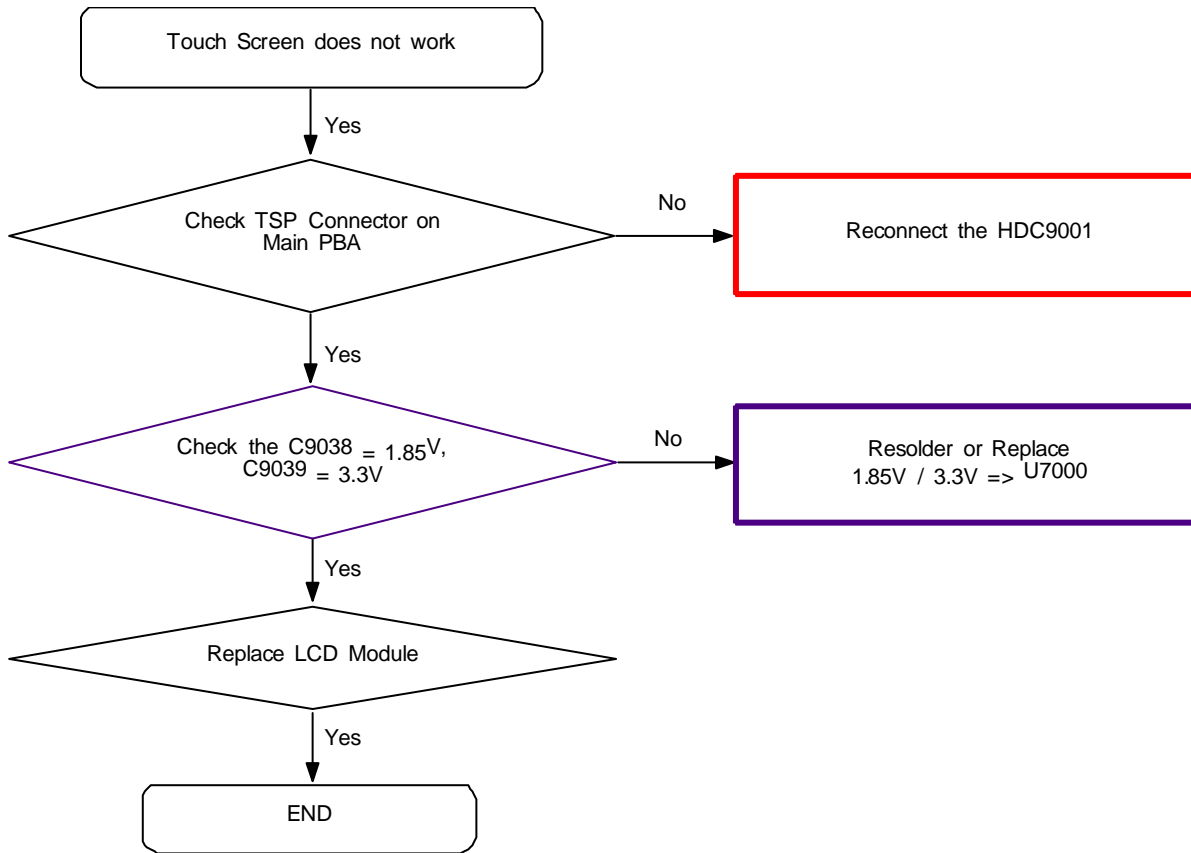
8. Level 3 Repair

8-3-16. 5M CAM



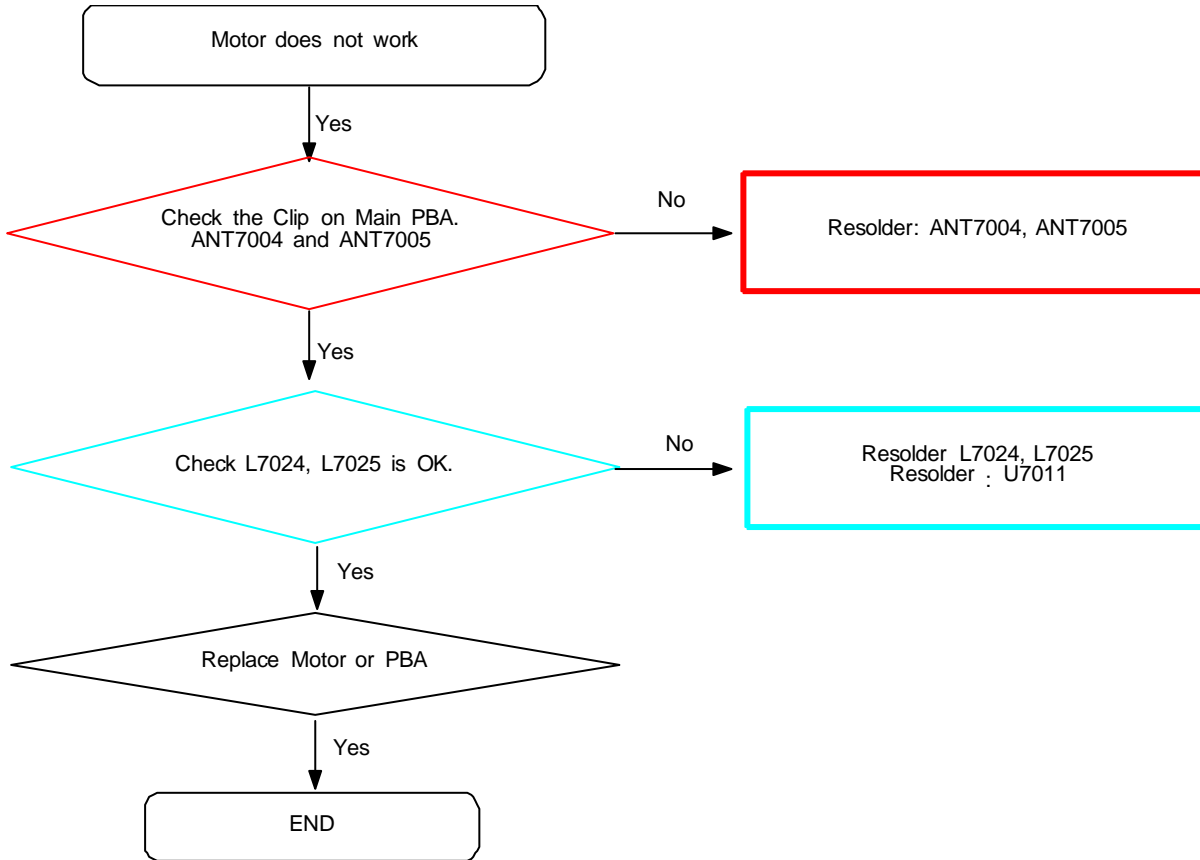
8. Level 3 Repair

8-3-17. TSP



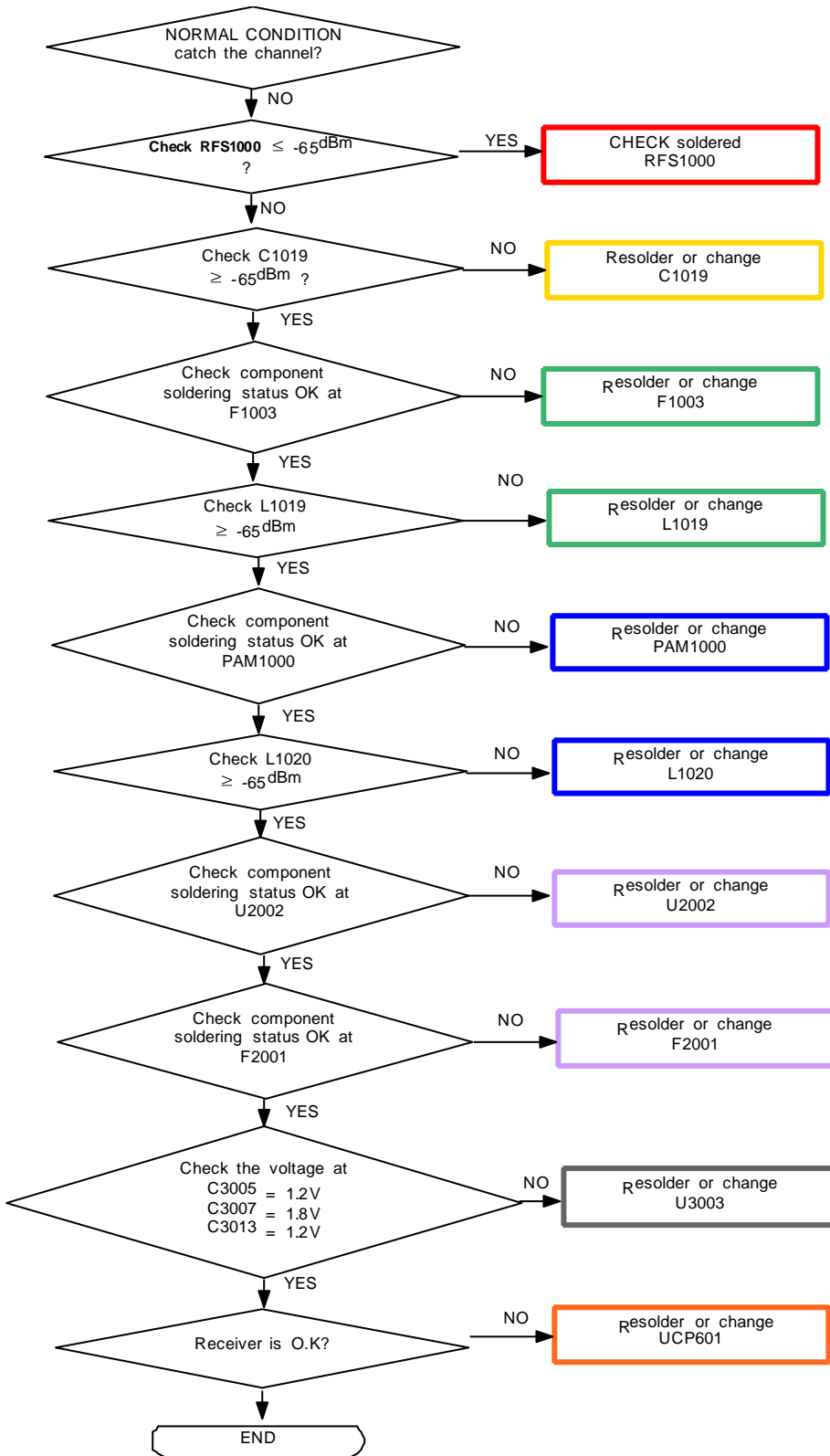
8. Level 3 Repair

8-3-18. Motor



8. Level 3 Repair

8-3-19. GSM900 / WCDMA B8 / LTE B8 Rx

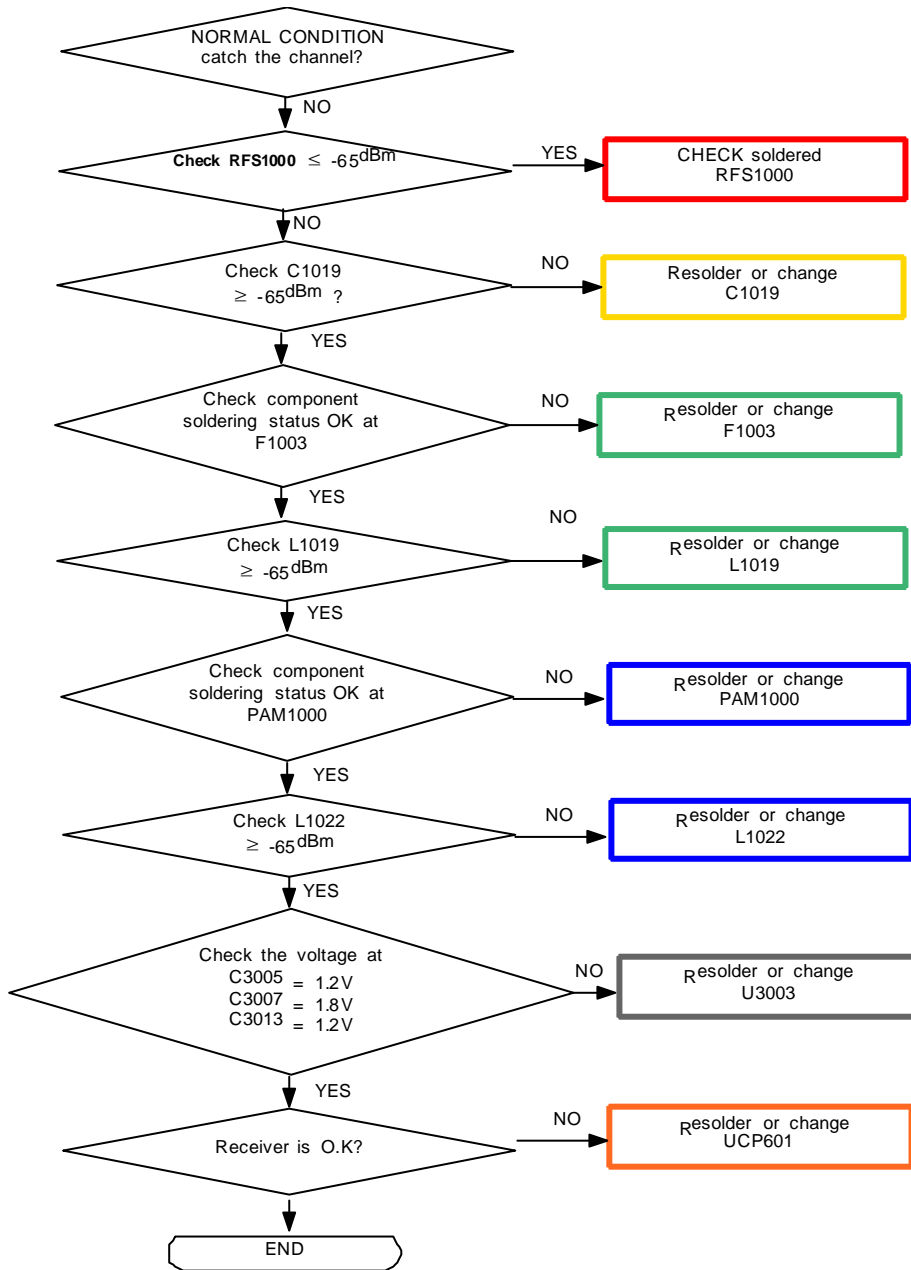


Confidential and proprietary-the contents in this service guide subject to change without prior notice

Distribution, transmission, or infringement of any content or data from this document without Samsung's written authorization is strictly prohibited.

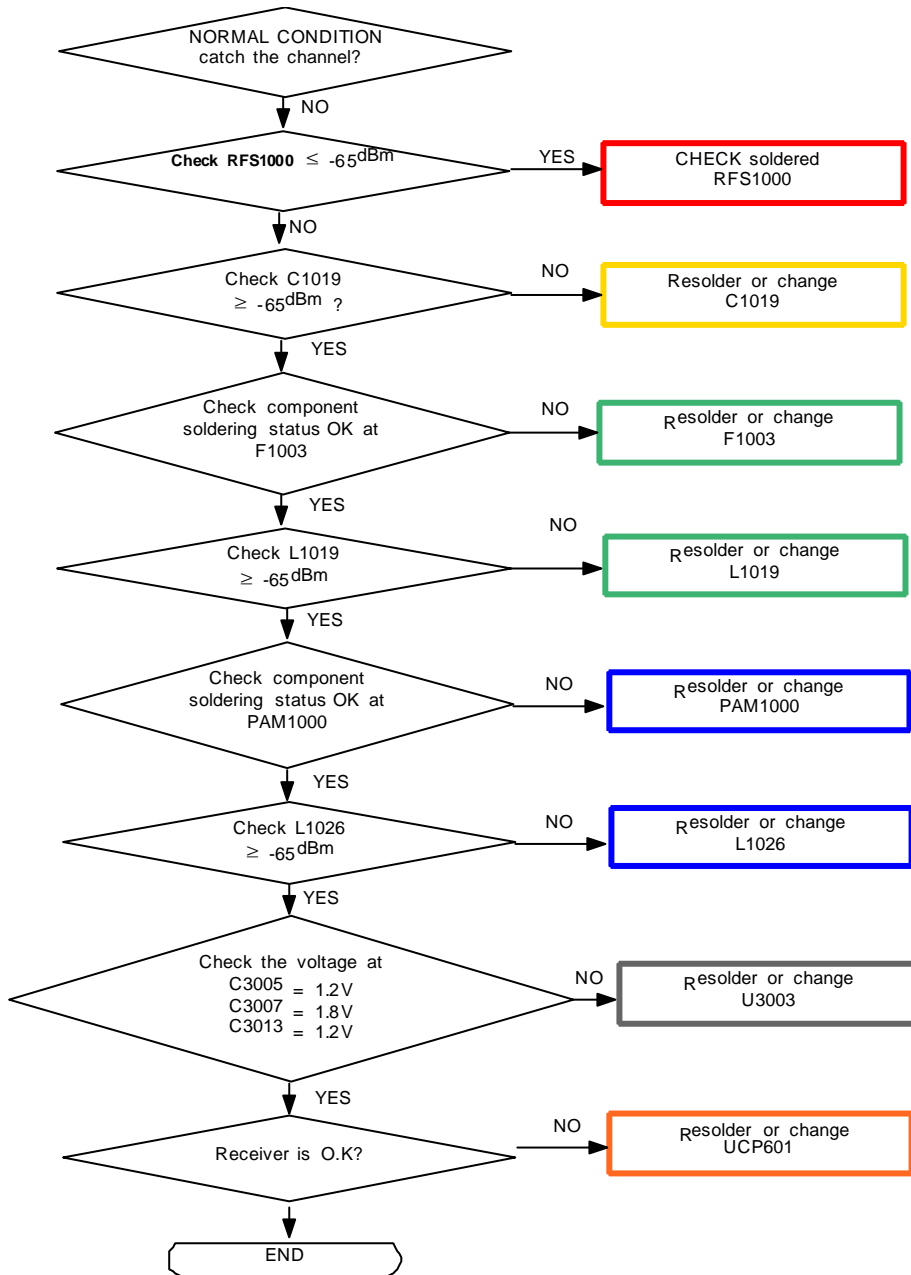
8. Level 3 Repair

8-3-20. LTE B12 / 17 Rx



8. Level 3 Repair

8-3-21. LTE B28 Rx

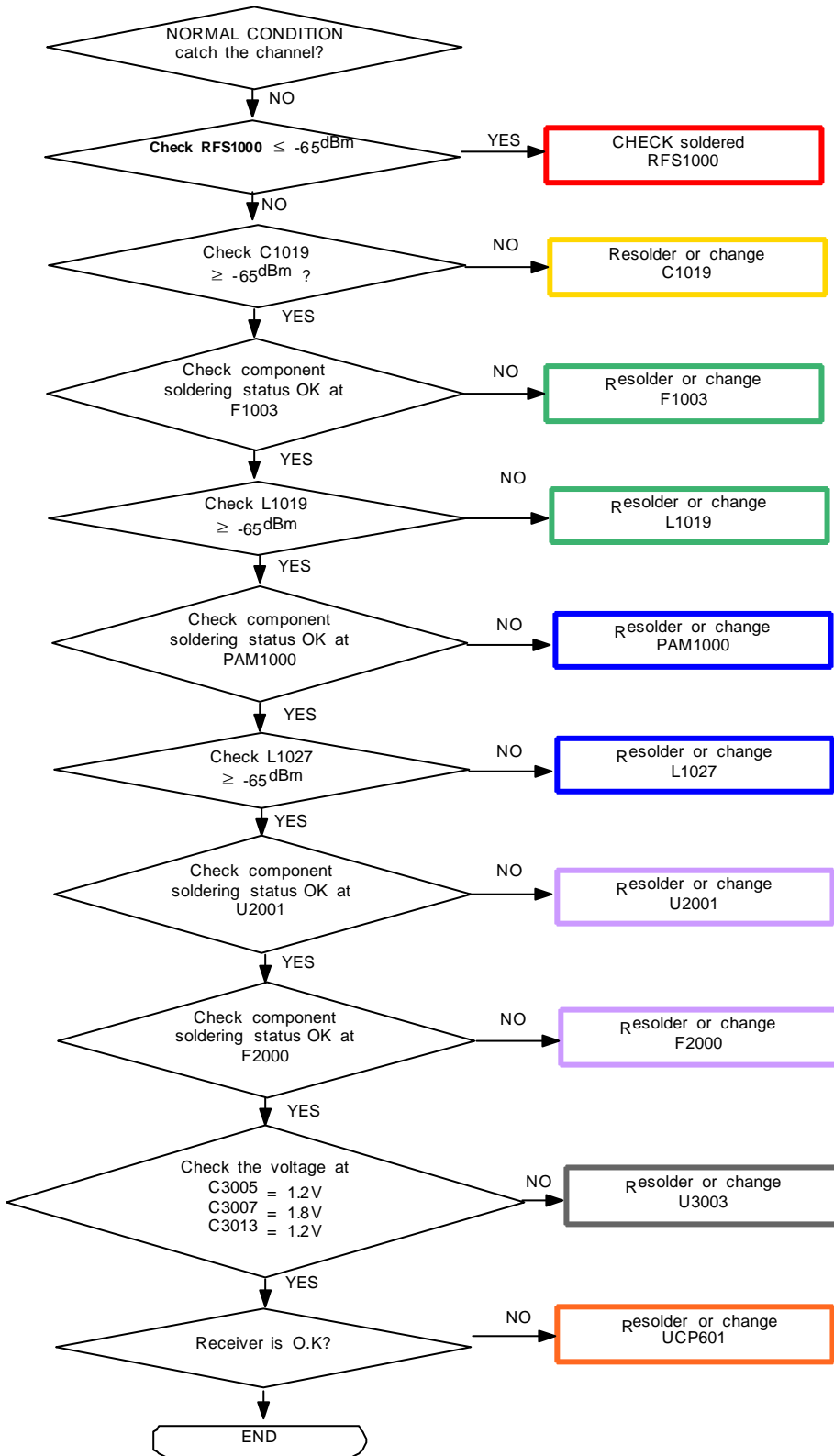


Confidential and proprietary-the contents in this service guide subject to change without prior notice

Distribution, transmission, or infringement of any content or data from this document without Samsung's written authorization is strictly prohibited.

8. Level 3 Repair

8-3-22. GSM850 / WCDMA B5 / LTE B5 / B18 / B19 / B26 Rx

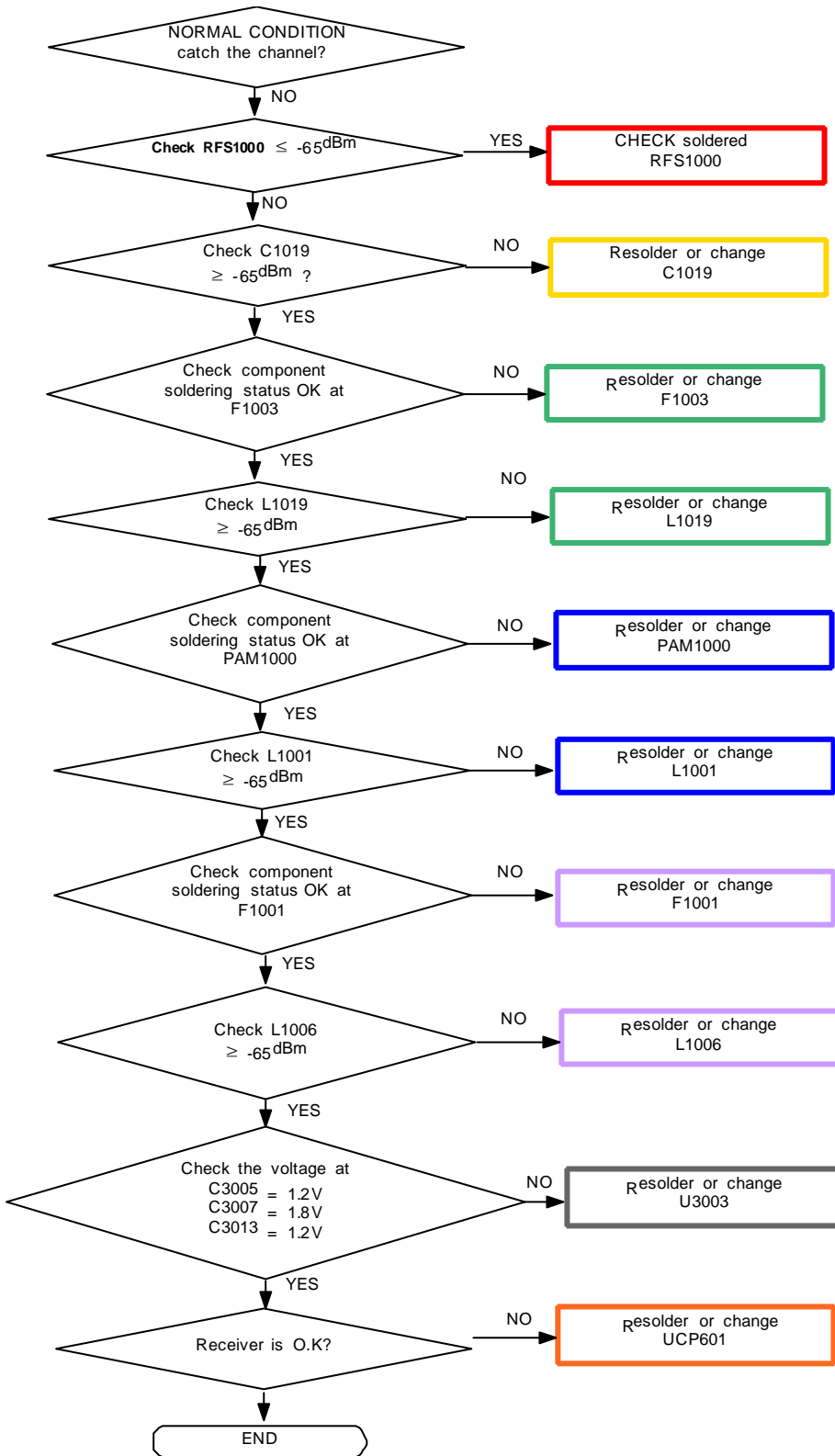


Confidential and proprietary-the contents in this service guide subject to change without prior notice

Distribution, transmission, or infringement of any content or data from this document without Samsung's written authorization is strictly prohibited.

8. Level 3 Repair

8-3-23. LTE B13 Rx

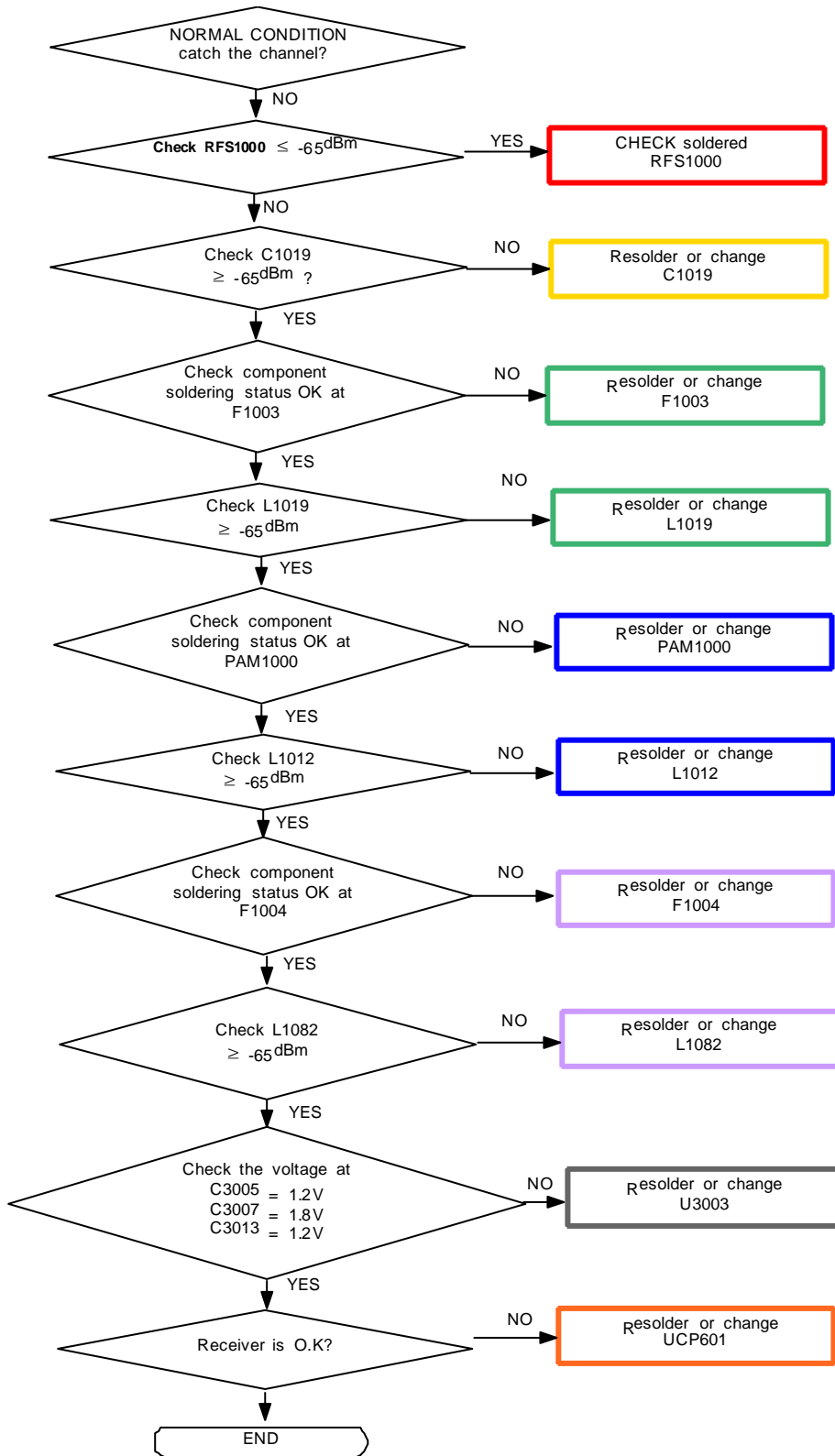


Confidential and proprietary-the contents in this service guide subject to change without prior notice

Distribution, transmission, or infringement of any content or data from this document without Samsung's written authorization is strictly prohibited.

8. Level 3 Repair

8-3-24. LTE B20 Rx

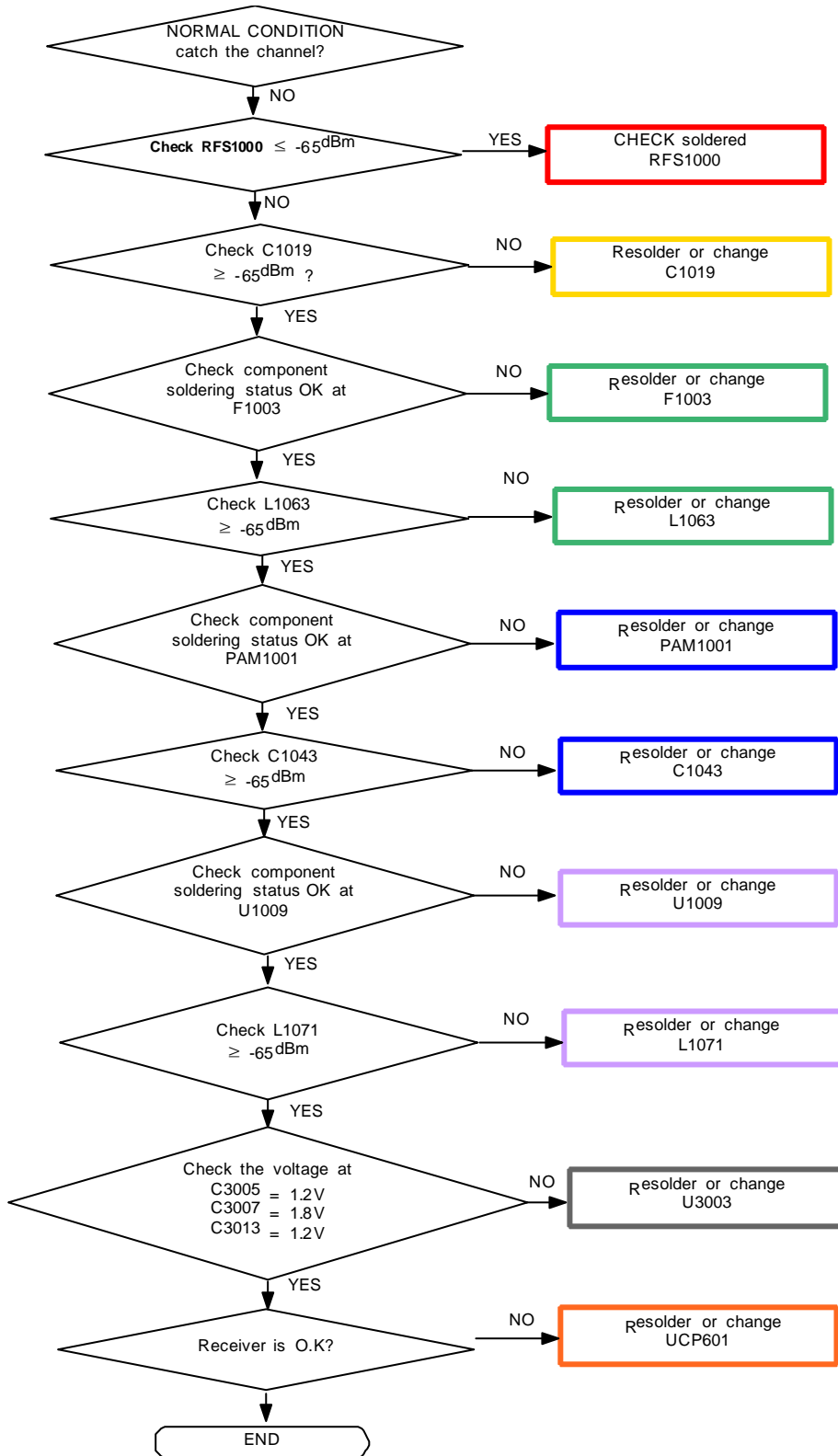


Confidential and proprietary-the contents in this service guide subject to change without prior notice

Distribution, transmission, or infringement of any content or data from this document without Samsung's written authorization is strictly prohibited.

8. Level 3 Repair

8-3-25. WCDMA B1 / B4 / LTE B1 / B4 Rx

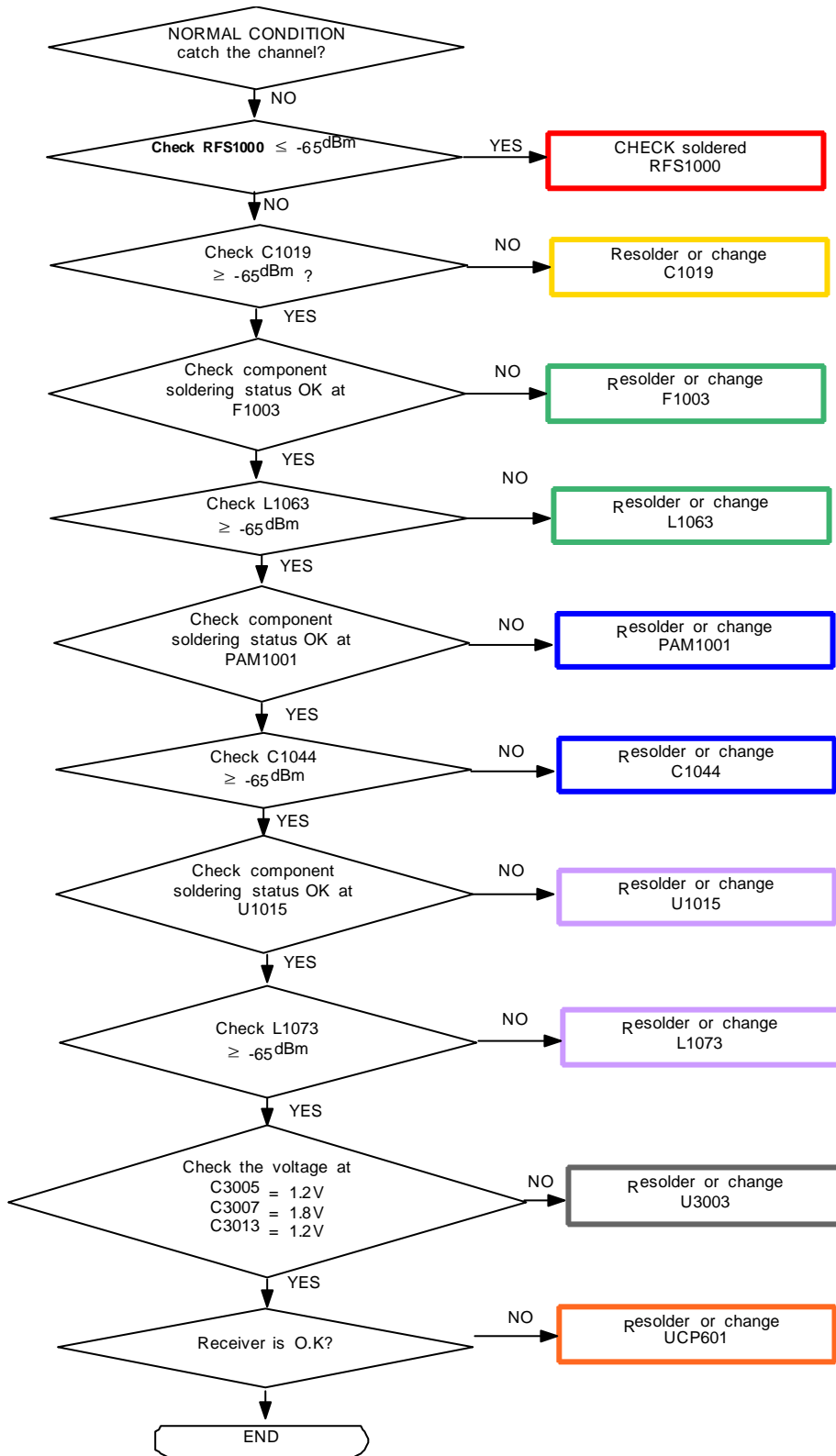


Confidential and proprietary-the contents in this service guide subject to change without prior notice

Distribution, transmission, or infringement of any content or data from this document without Samsung's written authorization is strictly prohibited.

8. Level 3 Repair

8-3-26. DCS1800 / LTE B3 Rx

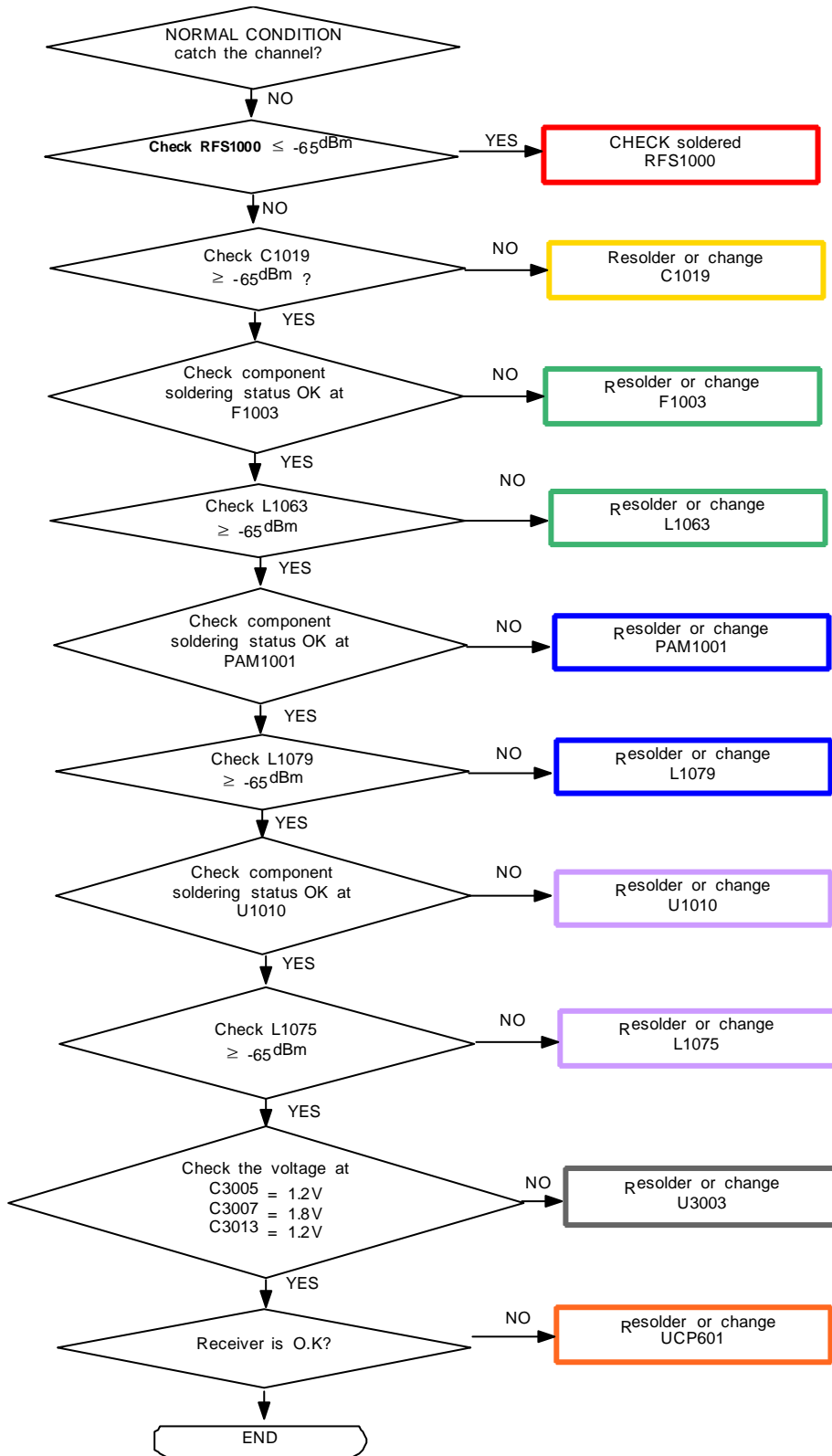


Confidential and proprietary-the contents in this service guide subject to change without prior notice

Distribution, transmission, or infringement of any content or data from this document without Samsung's written authorization is strictly prohibited.

8. Level 3 Repair

8-3-27. PCS1900 / WCDMA B2 / LTE B2 / B25 Rx

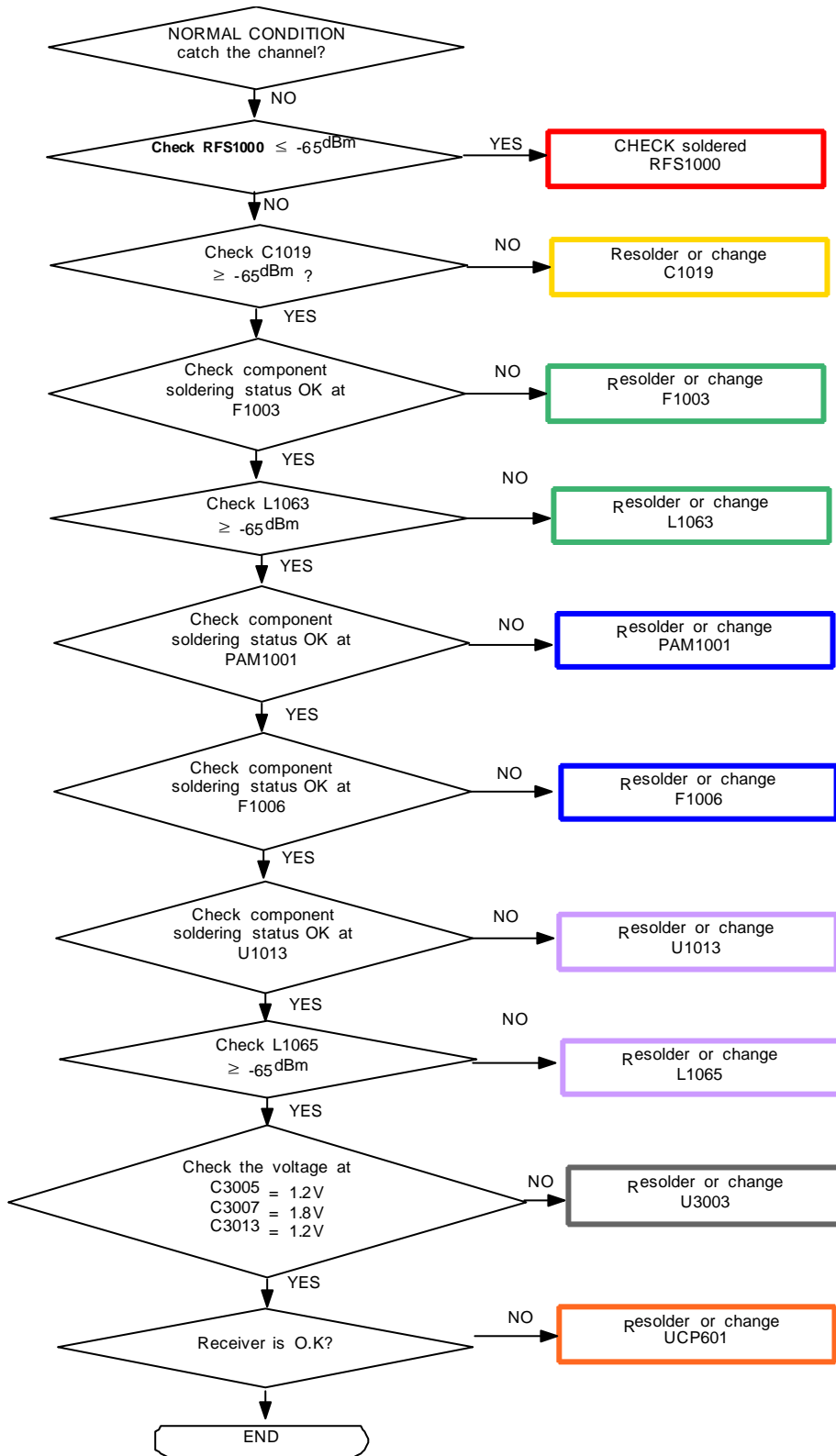


Confidential and proprietary-the contents in this service guide subject to change without prior notice

Distribution, transmission, or infringement of any content or data from this document without Samsung's written authorization is strictly prohibited.

8. Level 3 Repair

8-3-28. TDS CDMA B34 / B39 Rx

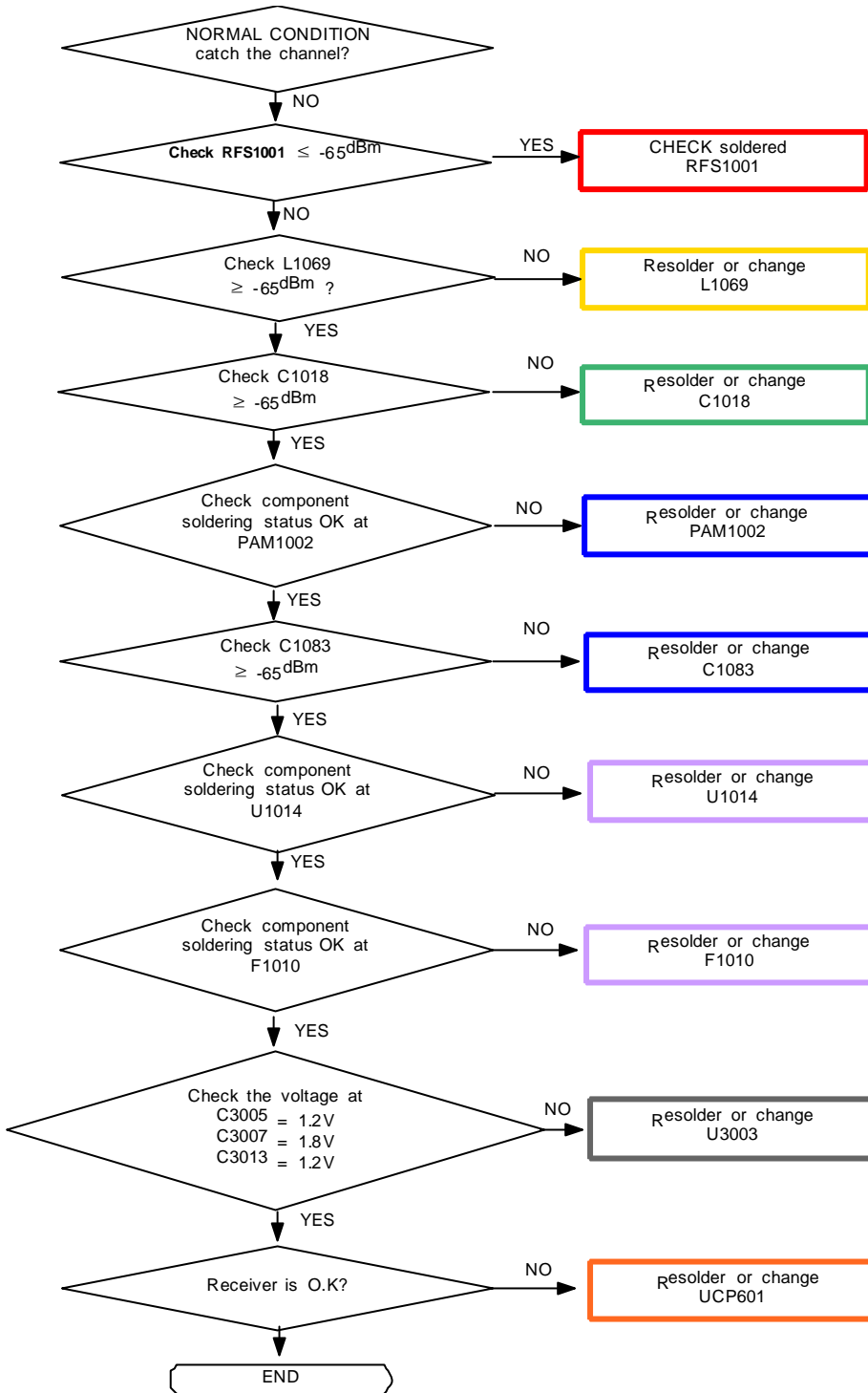


Confidential and proprietary-the contents in this service guide subject to change without prior notice

Distribution, transmission, or infringement of any content or data from this document without Samsung's written authorization is strictly prohibited.

8. Level 3 Repair

8-3-29. LTE B7 Rx

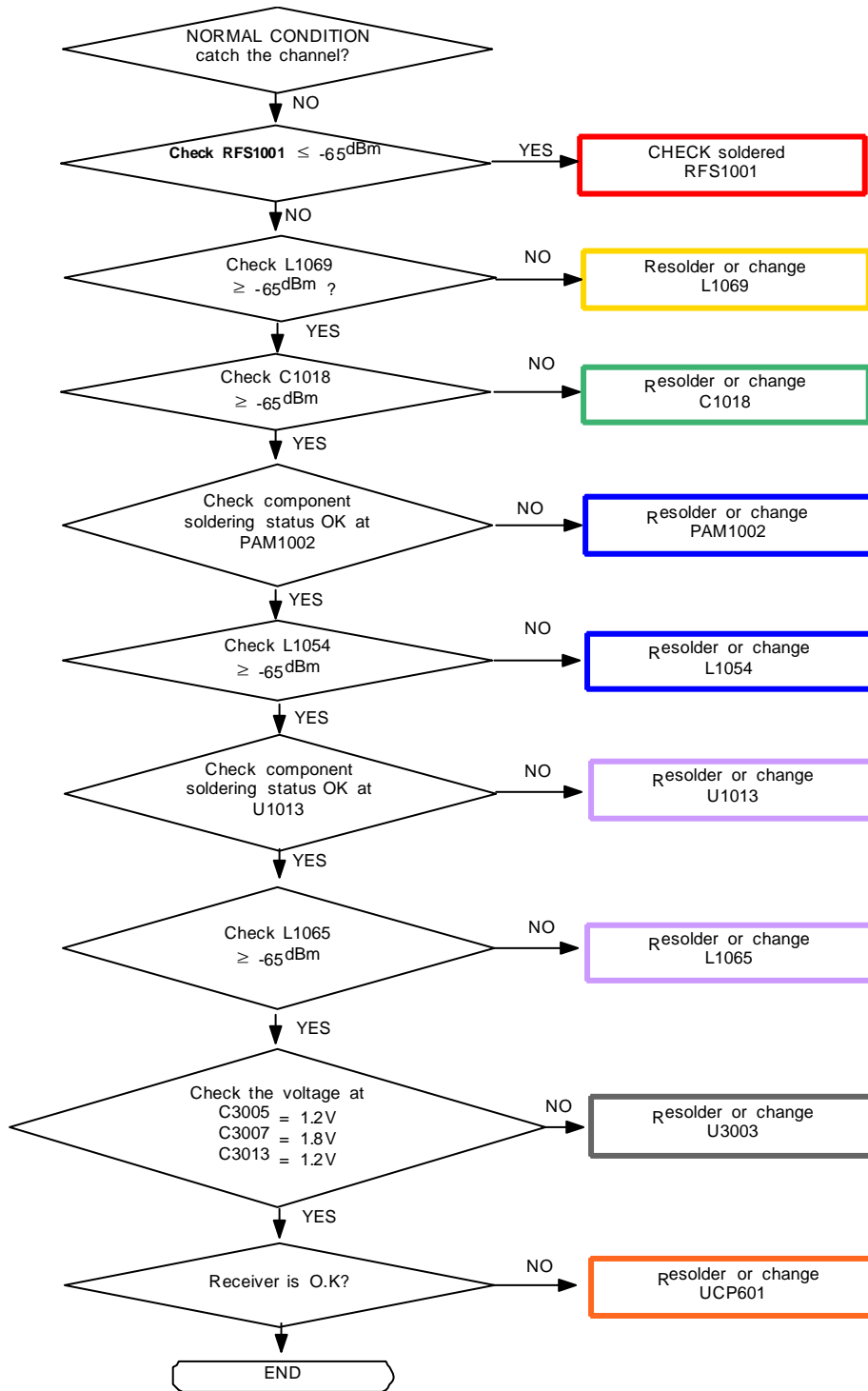


Confidential and proprietary-the contents in this service guide subject to change without prior notice

Distribution, transmission, or infringement of any content or data from this document without Samsung's written authorization is strictly prohibited.

8. Level 3 Repair

8-3-30. LTE B38 / B41 Rx

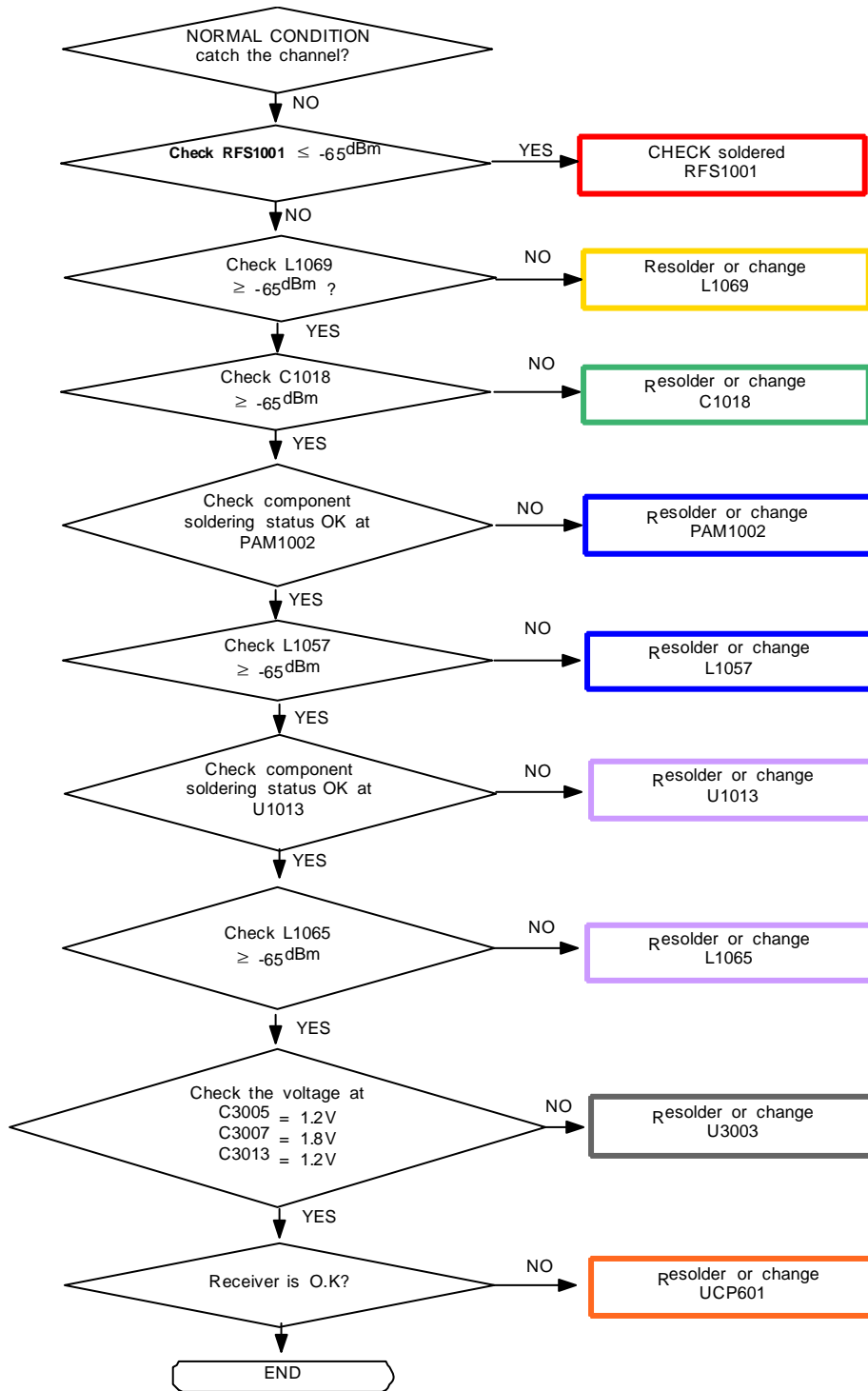


Confidential and proprietary-the contents in this service guide subject to change without prior notice

Distribution, transmission, or infringement of any content or data from this document without Samsung's written authorization is strictly prohibited.

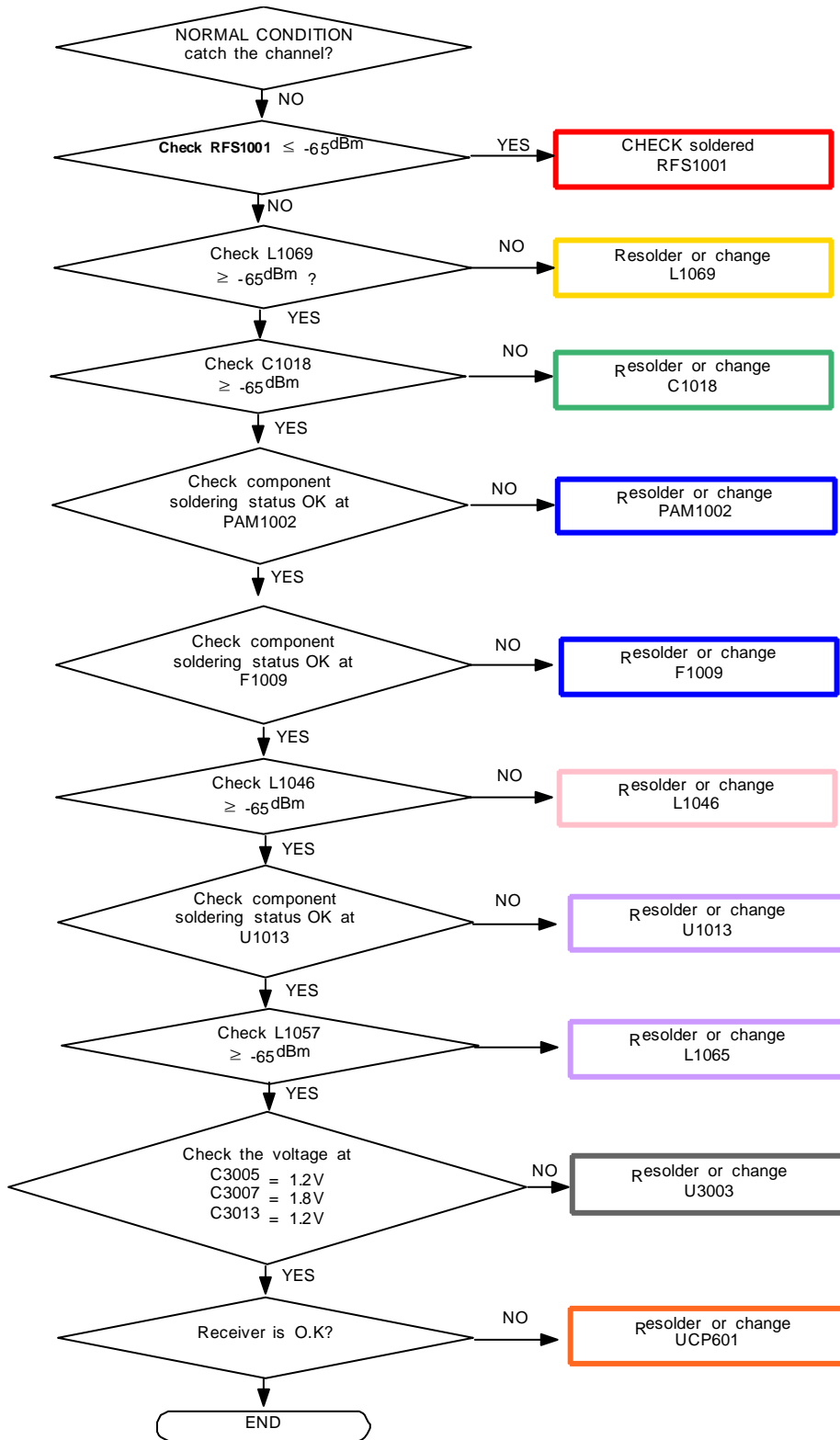
8. Level 3 Repair

8-3-31. LTE B40 Rx



8. Level 3 Repair

8-3-32. WCDMA B1 / B4 / LTE B1 / B4 4RxD

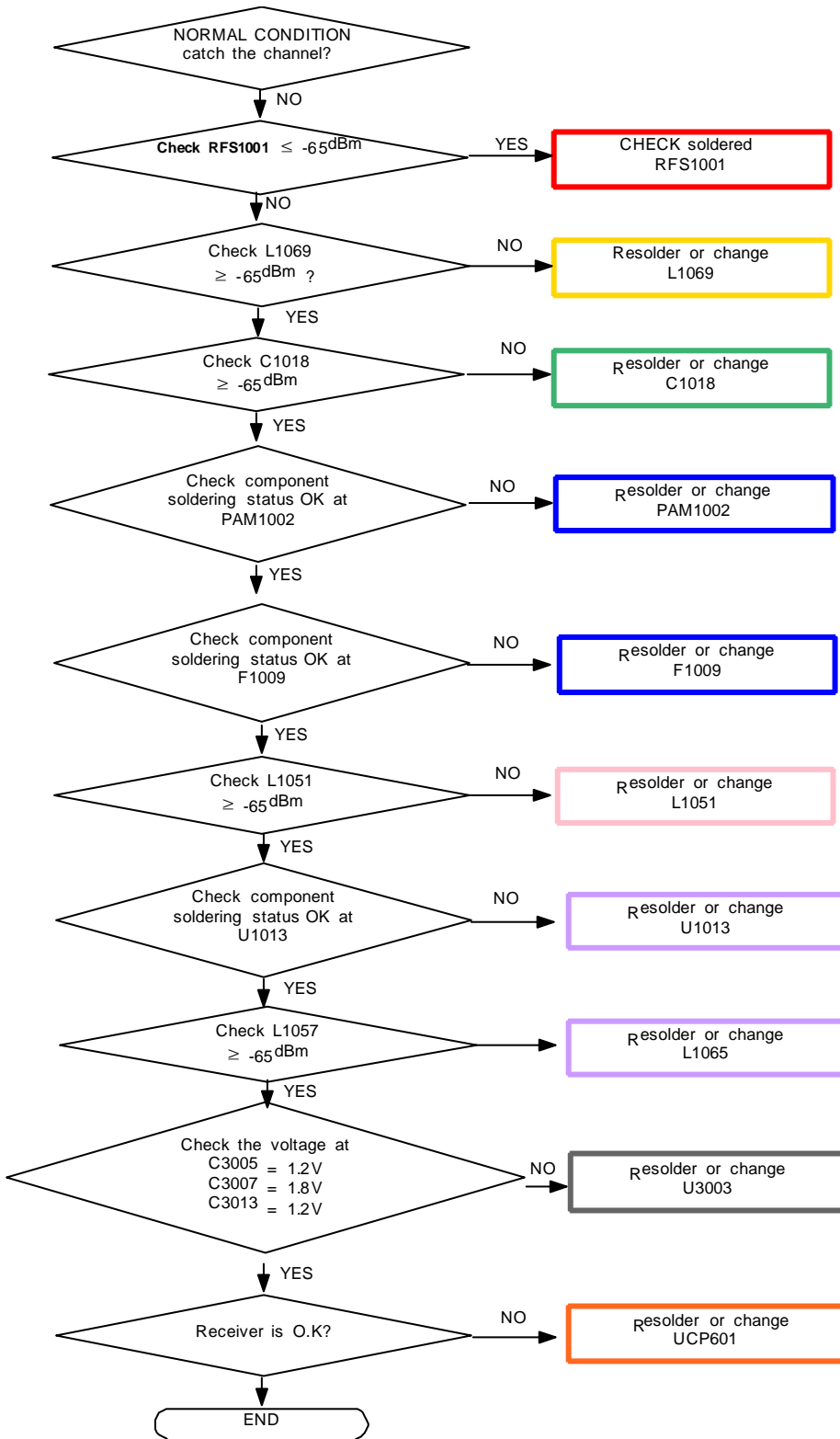


Confidential and proprietary-the contents in this service guide subject to change without prior notice

Distribution, transmission, or infringement of any content or data from this document without Samsung's written authorization is strictly prohibited.

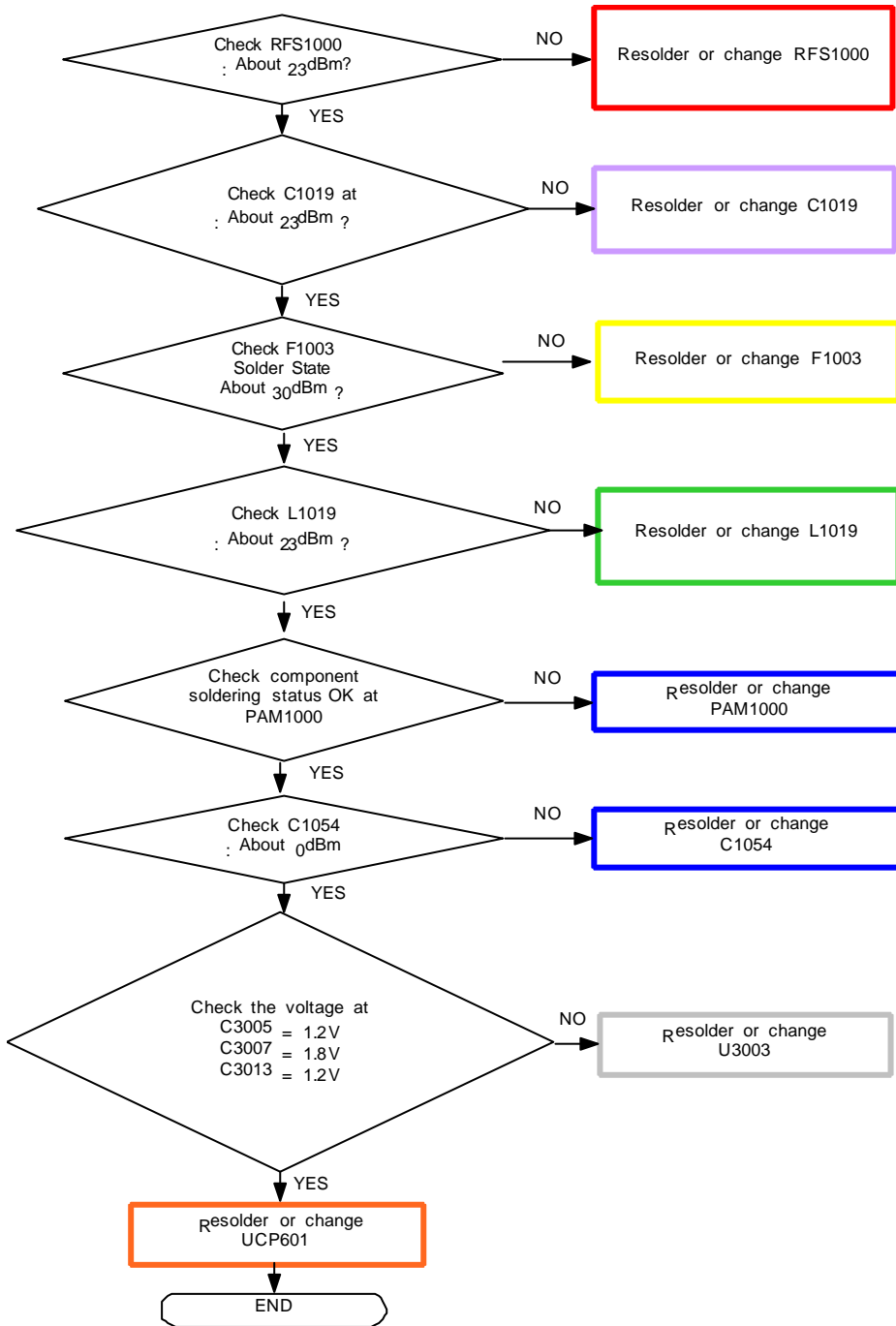
8. Level 3 Repair

8-3-33. LTE B3 4Rx D



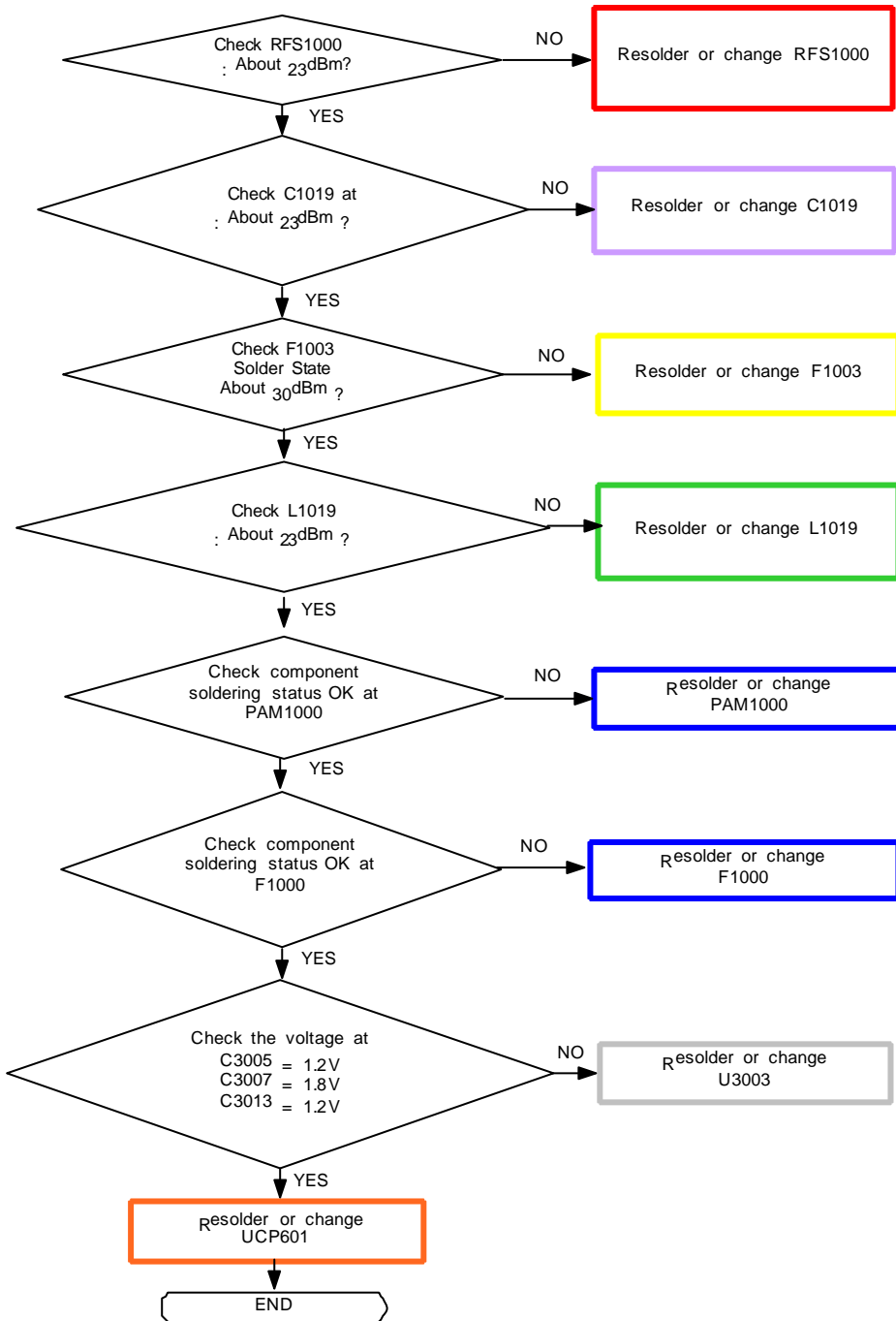
8. Level 3 Repair

8-3-34. GSM850 / 900 Tx



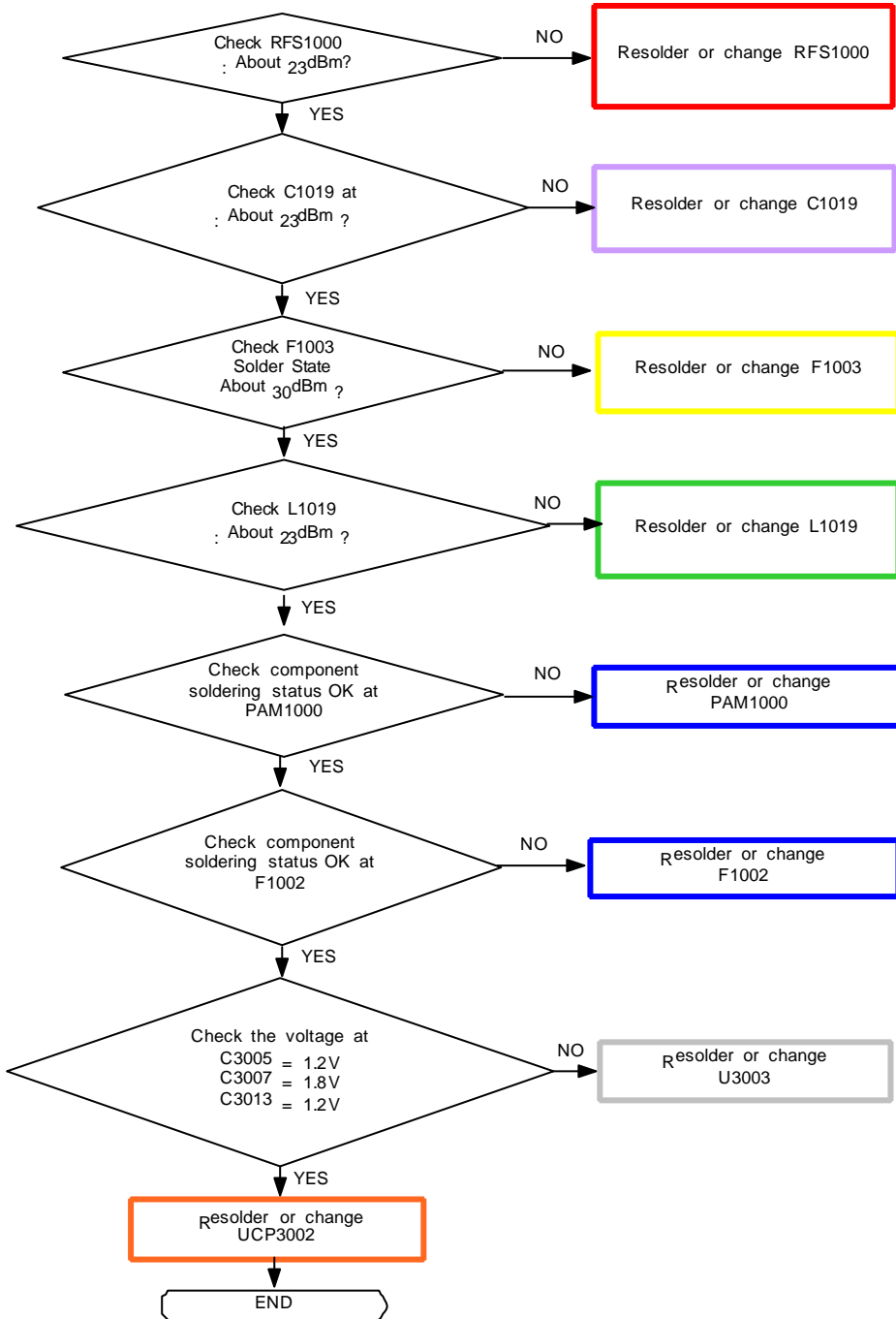
8. Level 3 Repair

8-3-35. LTE B12 / B17 Tx



8. Level 3 Repair

8-3-36. LTE B13 Tx

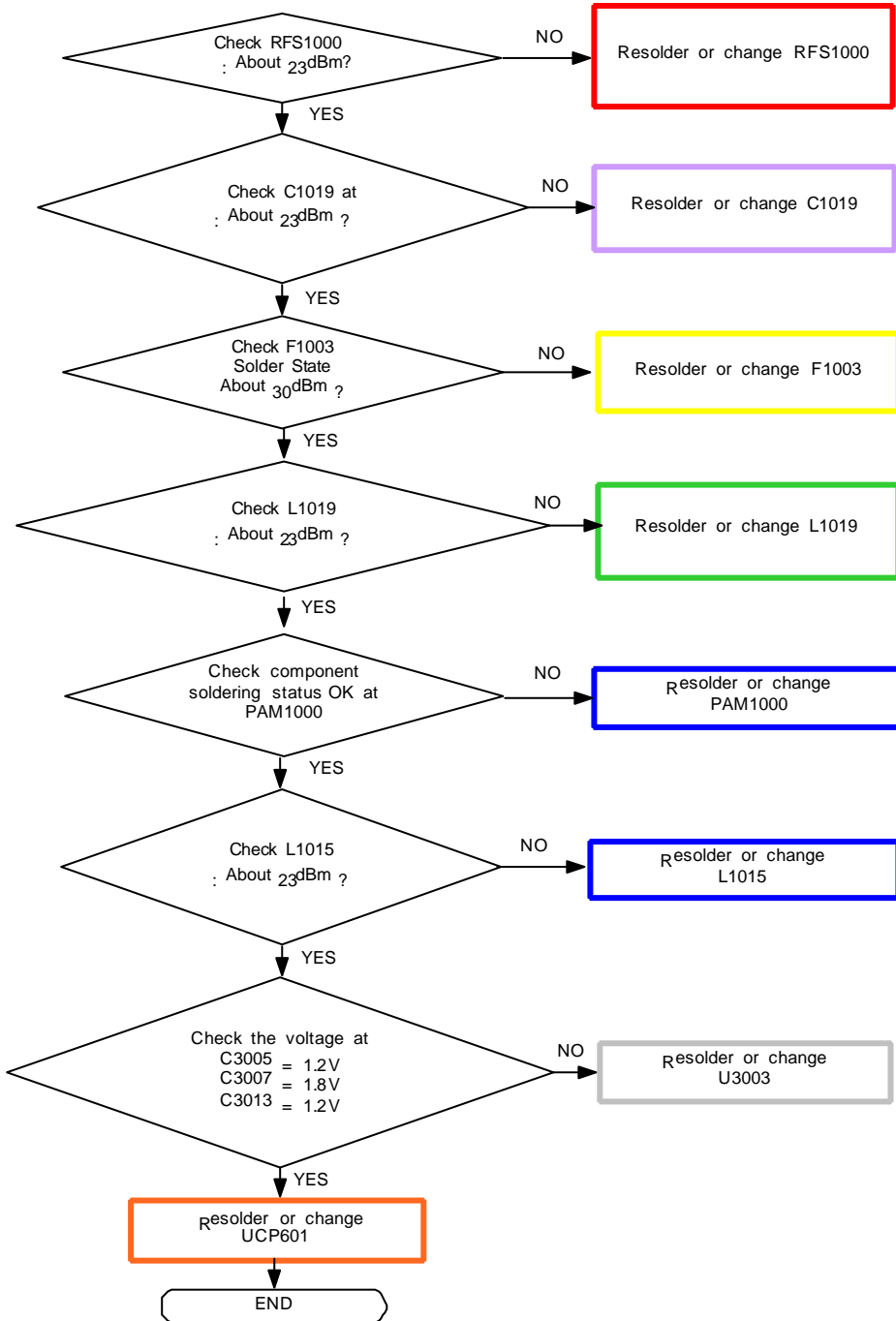


Confidential and proprietary-the contents in this service guide subject to change without prior notice

Distribution, transmission, or infringement of any content or data from this document without Samsung's written authorization is strictly prohibited.

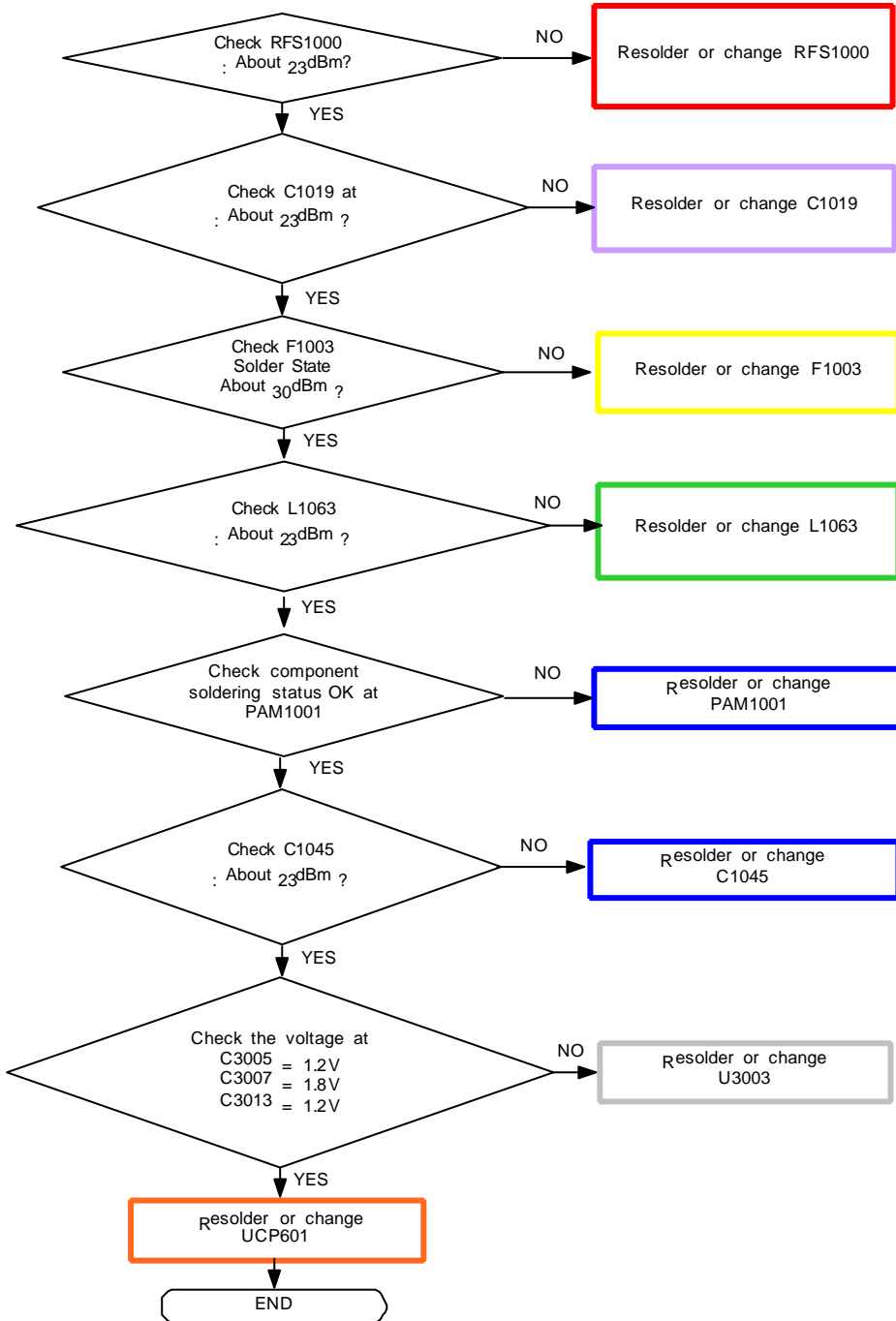
8. Level 3 Repair

8-3-37. WCDMA B5 / B8 / LTE B5 / B8 / B18 / B19 / B20 / B26 / B28 Tx



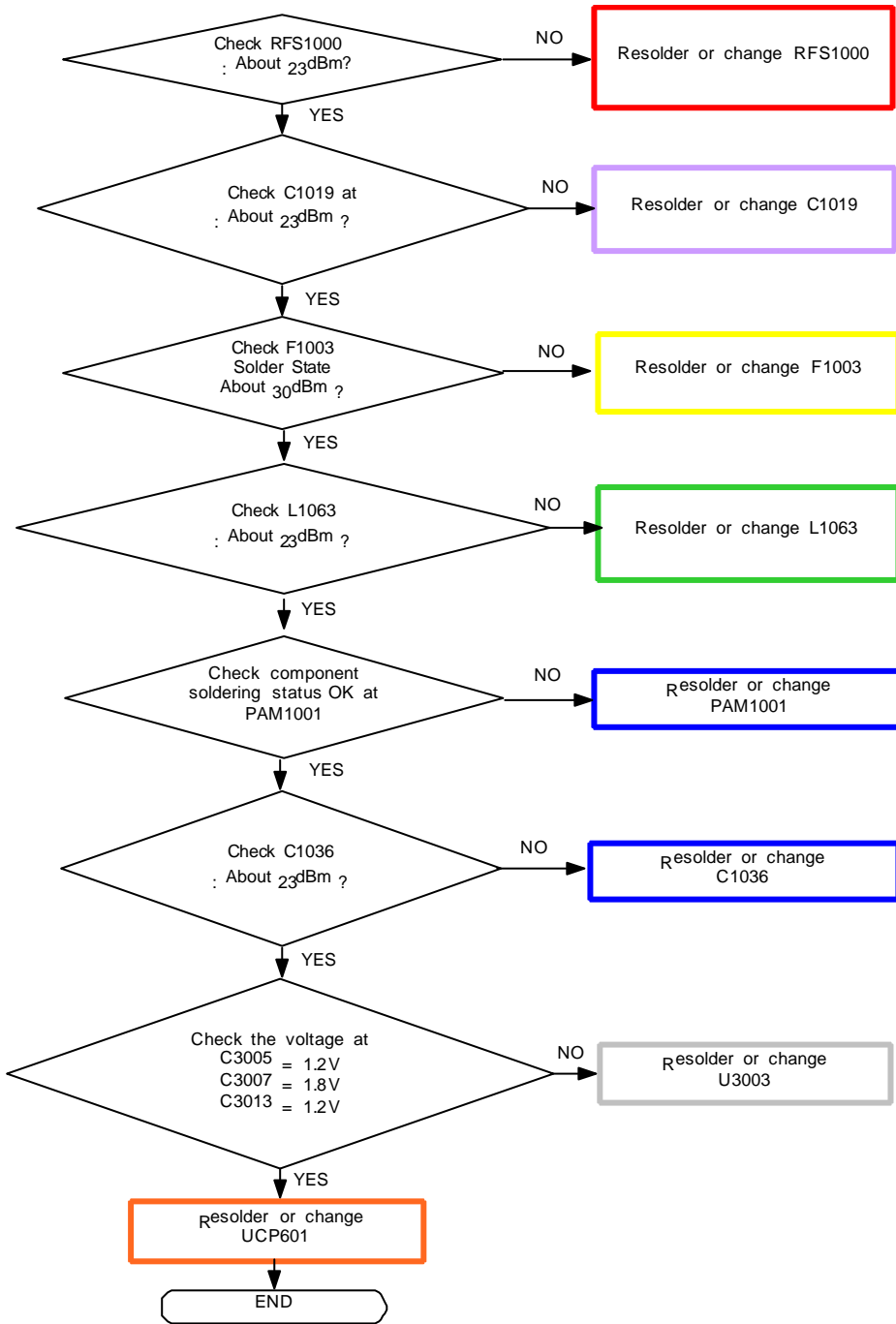
8. Level 3 Repair

8-3-38. DCS1800 / PCS1900 Tx



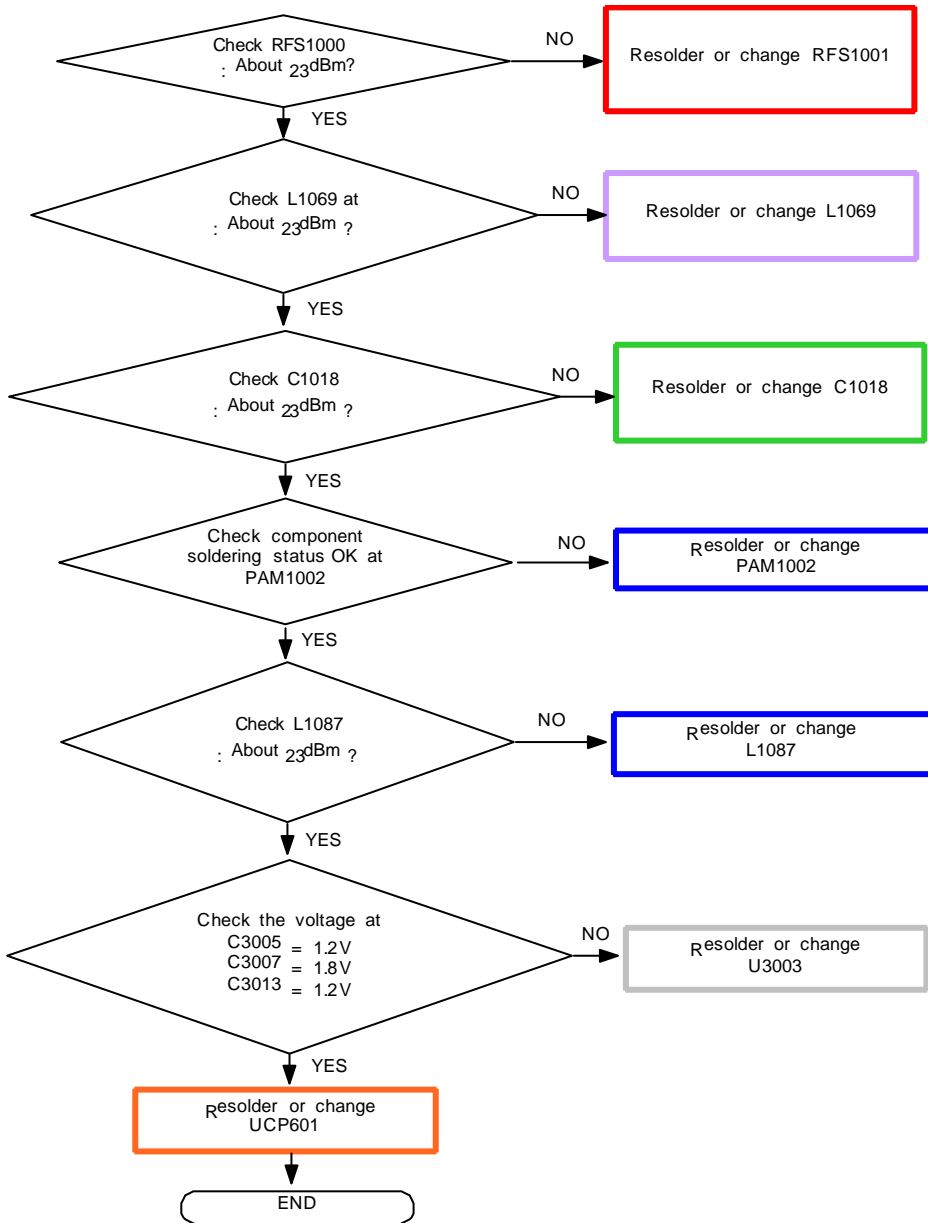
8. Level 3 Repair

8-3-39. WCDMA B1 / B2 / B4 / LTE B1 / B2 / B3 / B4 / B25 / TDS CDMA B34 / B39 Tx



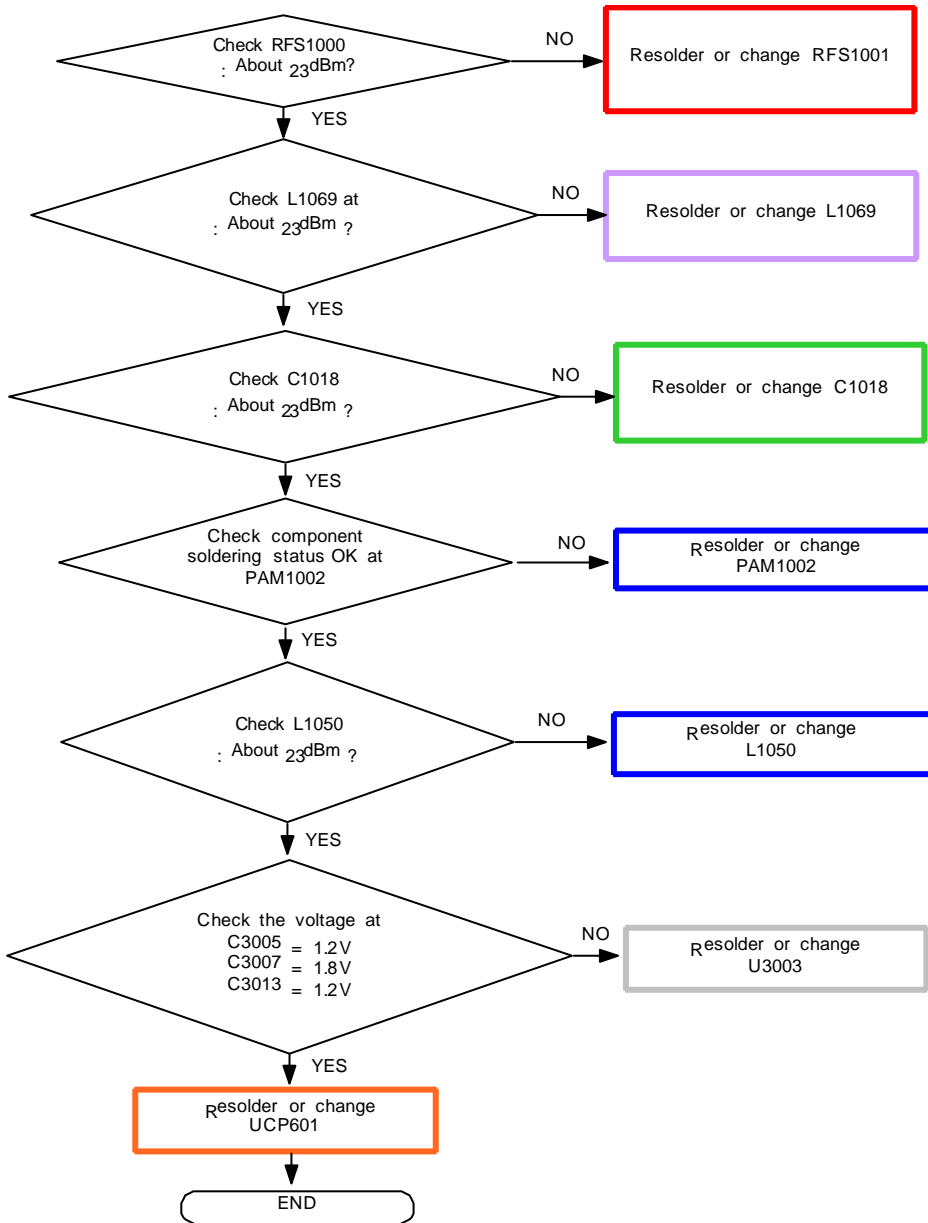
8. Level 3 Repair

8-3-40. LTE B7 Tx



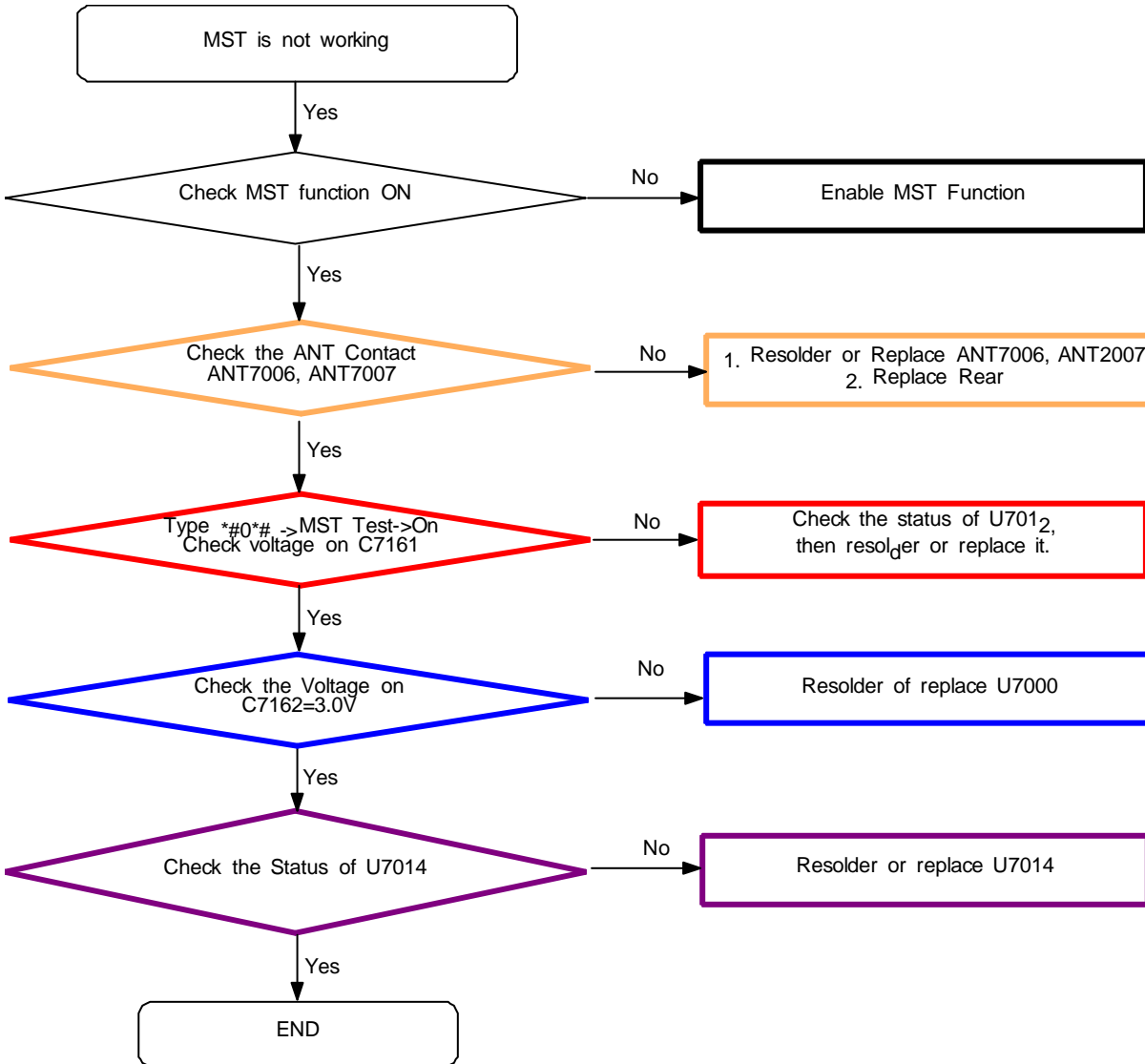
8. Level 3 Repair

8-3-41. LTE B38 / B40 / B41 Tx



8. Level 3 Repair

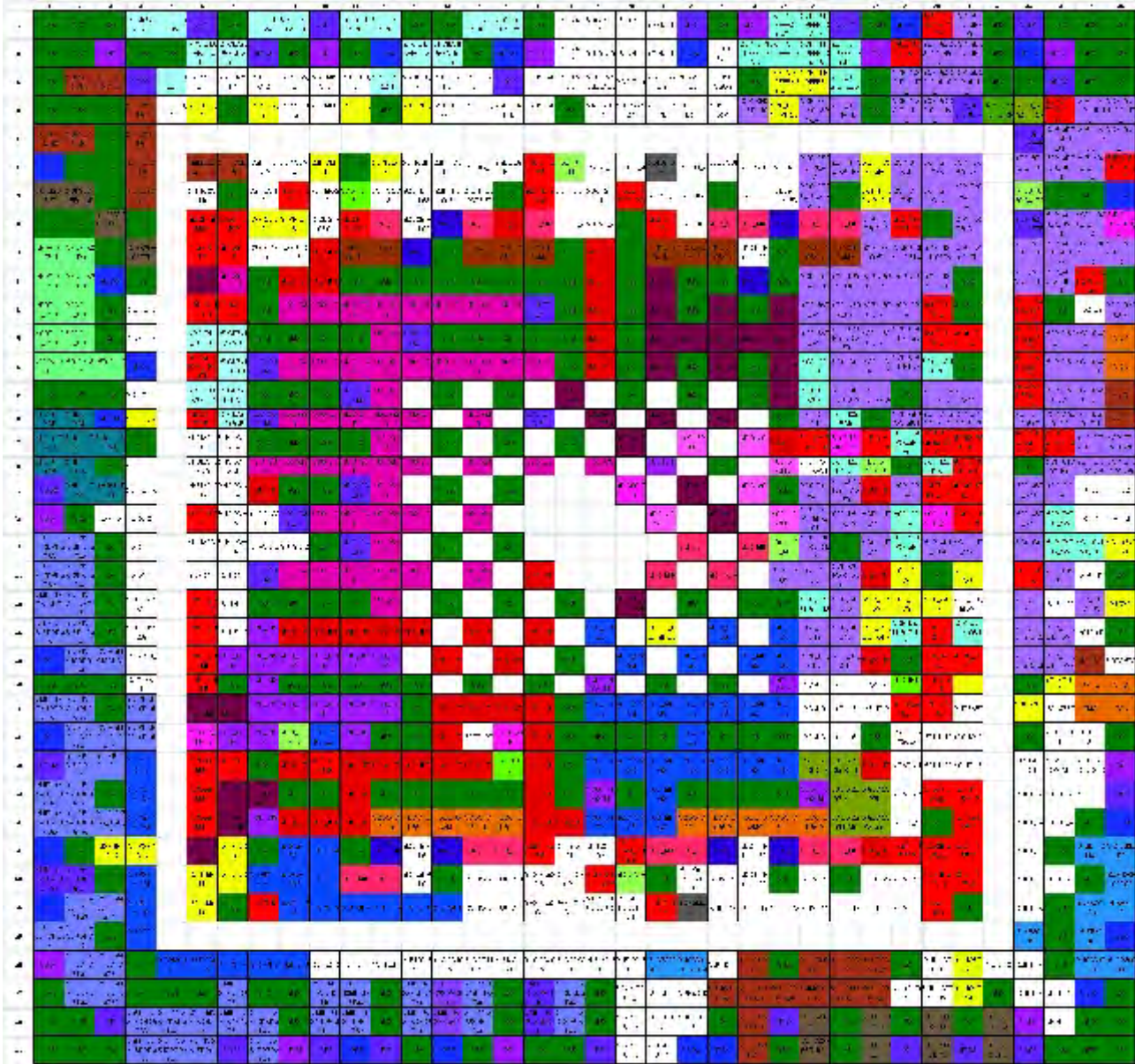
8-3-42. MST



8. Level 3 Repair

8-4. Service Schematics

-NC Point(Top View)



UCP601

Confidential and proprietary-the contents in this service guide subject to change without prior notice

Distribution, transmission, or infringement of any content or data from this document without Samsung's written authorization is strictly prohibited.