

# New Product SVC Guide

## [ SM-G935F ]

Rev 2.7

Instructor : Hangjin Cho([hangjiny.cho@samsung.com](mailto:hangjiny.cho@samsung.com))

# Notice

This guide is intended solely for the Samsung Electronics internal training and may contain trade secret, industrial technology or privileged and confidential information otherwise protected under applicable law including the Unfair Competition Prevention and Trade Secret Protection Act. Any unauthorized dissemination, distribution, copying or use of the information contained in this guide is strictly prohibited and subject to legal action.

All functionality, features, specifications and other product information provided in this document including, but not limited to, the benefits, design, pricing, components, performance, availability, and capabilities of the product are subject to change without notice or obligation. Samsung reserves the right to make changes to this guide and the product described herein, at anytime, without obligation on Samsung Electronics to provide notification of such change.

# Contents

1. Specification of SM-G935F (Galaxy S7 edge)
2. H/W
  - 2-1. New Concepts of H/W
  - 2-2. Disassembly & Assembly
  - 2-3. Troubleshooting
  - 2-4. R/F Calibration
3. S/W
  - 3-1. S/W Download
  - 3-2. Key Features
  - 3-3. New S/W features & New Concepts(UI/IX)
4. SVC Technical Information



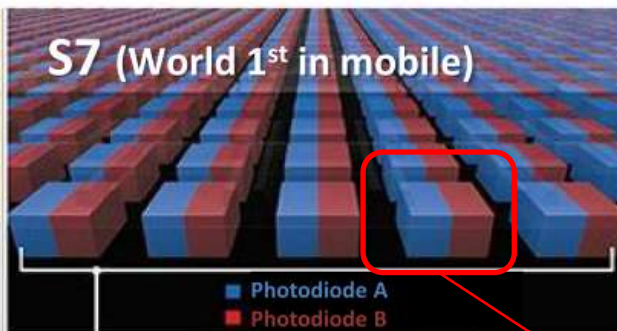
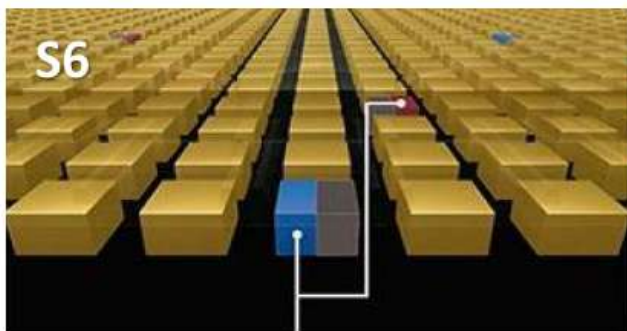
# Specification

Item	Spec.		
AP Chipset	Vendor	Cores	Speed
	S.LSI	Octa-core	2.4 Ghz Quad + 1.6Ghz Quad
Memory	RAM		Flash
	4GB		32GB
Display	Size	Resolution	Type
	5.5 inch	1440 X 2560, WQHD	Super AMOLED
CAMERA	Resolution (Main/Front)	Auto Focus	Video (Main)
	12MP / 5MP	2PD Phase detection	1080p @ 60fps
Network	2G/3G	LTE	
	Support	B1/2/3/4/5/7/12/17/20	Cat 11 (50Mbps UL / 600Mbps DL)
Sensors	Accelerometer, Magnetic, Gyro, Barometer, RGB Light, Proximity, Fingerprint, Heart Rate Light		
Connectivity	Bluetooth 4.1, WIFI 802.11 a/b/g/n/ac, NFC, MST, USB2.0		
Battery & GPS	3,600mAh		A-GPS & GLONASS & BEIDOU
Micro SD & OS	Up to 200GB		Android V6.0.1 (Marshmallow)
Remarks	Water Resistance : IP68		

# New Concepts of H/W

## Dual Photodiode Sensor

### Phase Detection

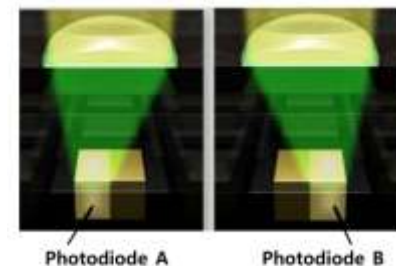


- Phase Detection pixel  
: Fixed numbers of pixels  
(120K, 0.7%)

- Phase Detection pixel  
: All pixels (24M, 100%)  
※ Used in Canon DSLR camera (70D)

### Super Fast AF Speed

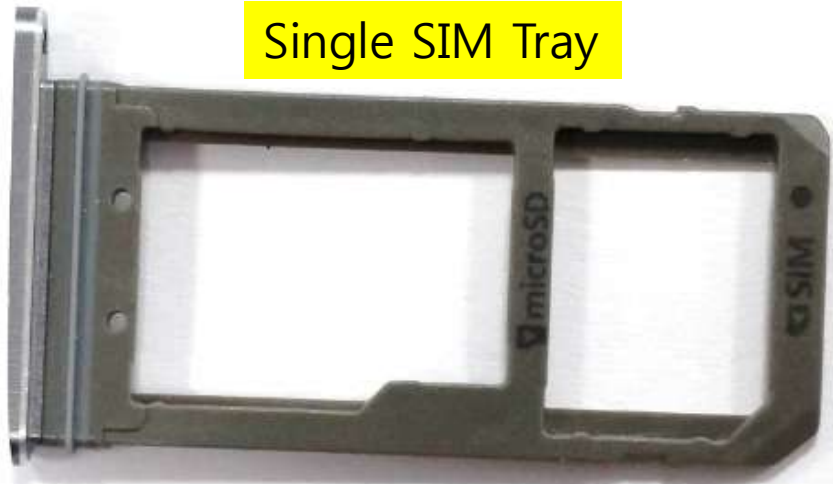
- S6 0.85s → S7 0.2s @ 20 Lux



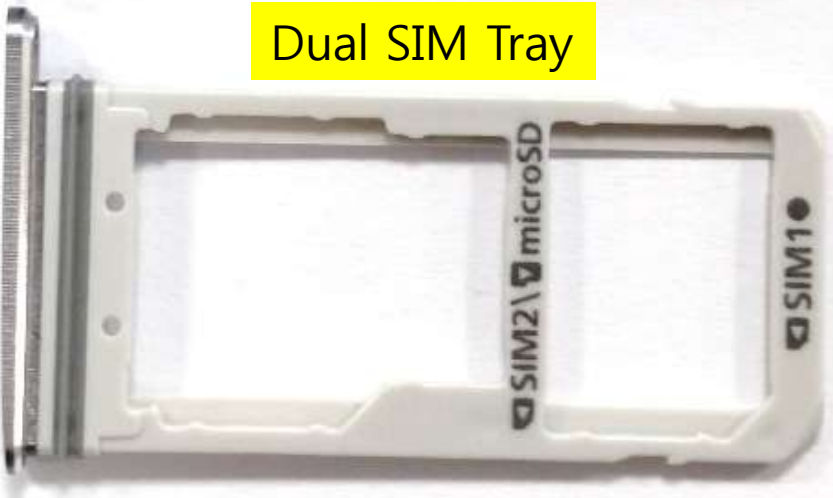
# New Concepts of H/W

## MicroSD card Support – Hybrid SIM/SD socket

Single SIM Tray

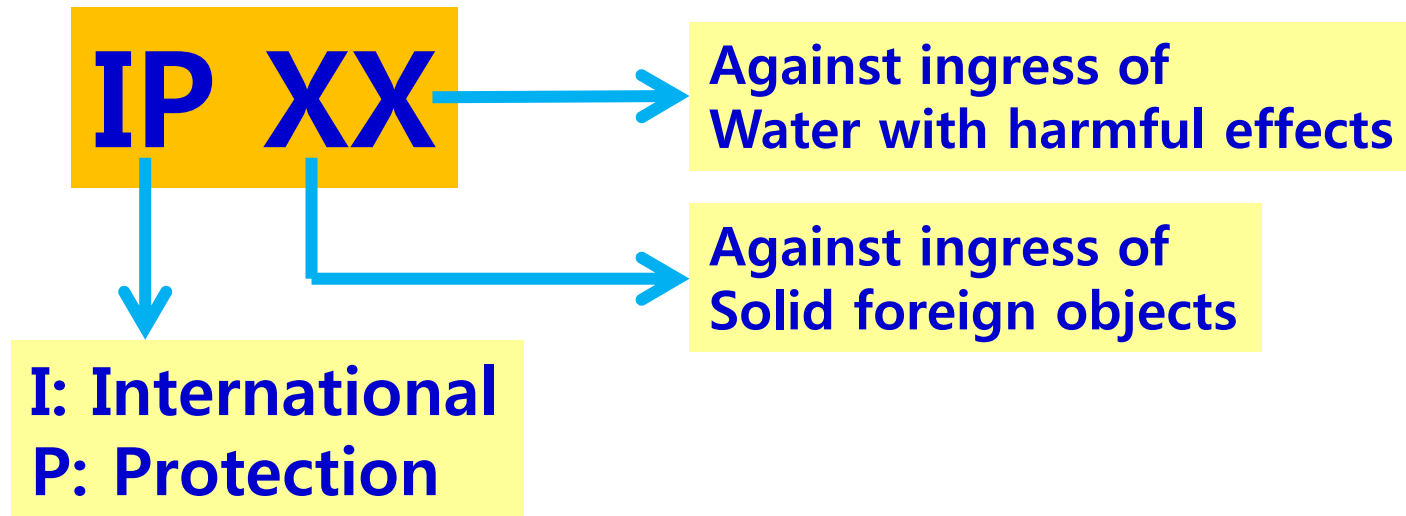


Dual SIM Tray



# New Concepts of H/W

IP68





# New Concepts of H/W

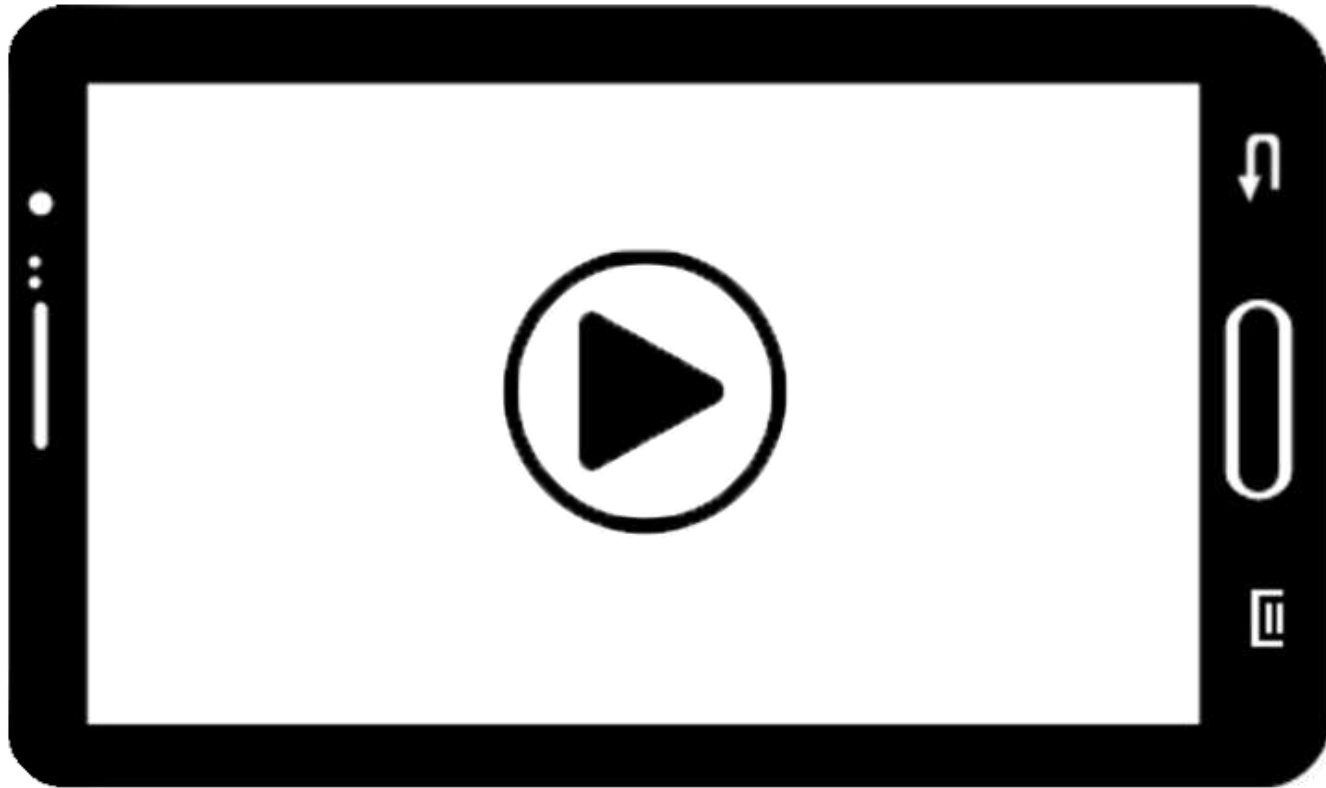
## IP68

Level	Object size protected against	Effective against
0	—	No protection against contact and ingress of objects
1	>50 mm	Any large surface of the body, such as the back of a hand, but no protection against deliberate contact with a body part
2	>12.5 mm	Fingers or similar objects
3	>2.5 mm	Tools, thick wires, etc.
4	>1 mm	Most wires, screws, etc.
5	Dust protected	Ingress of dust is not entirely prevented, but it must not enter in sufficient quantity to interfere with the satisfactory operation of the equipment.
6	Dust tight	No ingress of dust; complete protection against contact (dust tight)

Level	Protected against	Effective against
0	Not protected	—
1	Dripping water	Dripping water (vertically falling drops) shall have no harmful effect.
2	Dripping water when tilted up to 15°	Vertically dripping water shall have no harmful effect when the enclosure is tilted at an angle up to 15° from its normal position.
3	Spraying water	Water falling as a spray at any angle up to 60° from the vertical shall have no harmful effect.
4	Splashing of water	Water splashing against the enclosure from any direction shall have no harmful effect.
5	Water jets	Water projected by a nozzle (6.3 mm) against enclosure from any direction shall have no harmful effects.
6	Powerful water jets	Water projected in powerful jets (12.5 mm nozzle) against the enclosure from any direction shall have no harmful effects.
7	Immersion up to 1 m	Ingress of water in harmful quantity shall not be possible when the enclosure is immersed in water under defined conditions of pressure and time (up to 1 m of submersion).
8	Immersion beyond 1 m	The equipment is suitable for continuous immersion in water under conditions which shall be specified by the manufacturer. However, with certain types of equipment, it can mean that water can enter but only in such a manner that it produces no harmful effects.

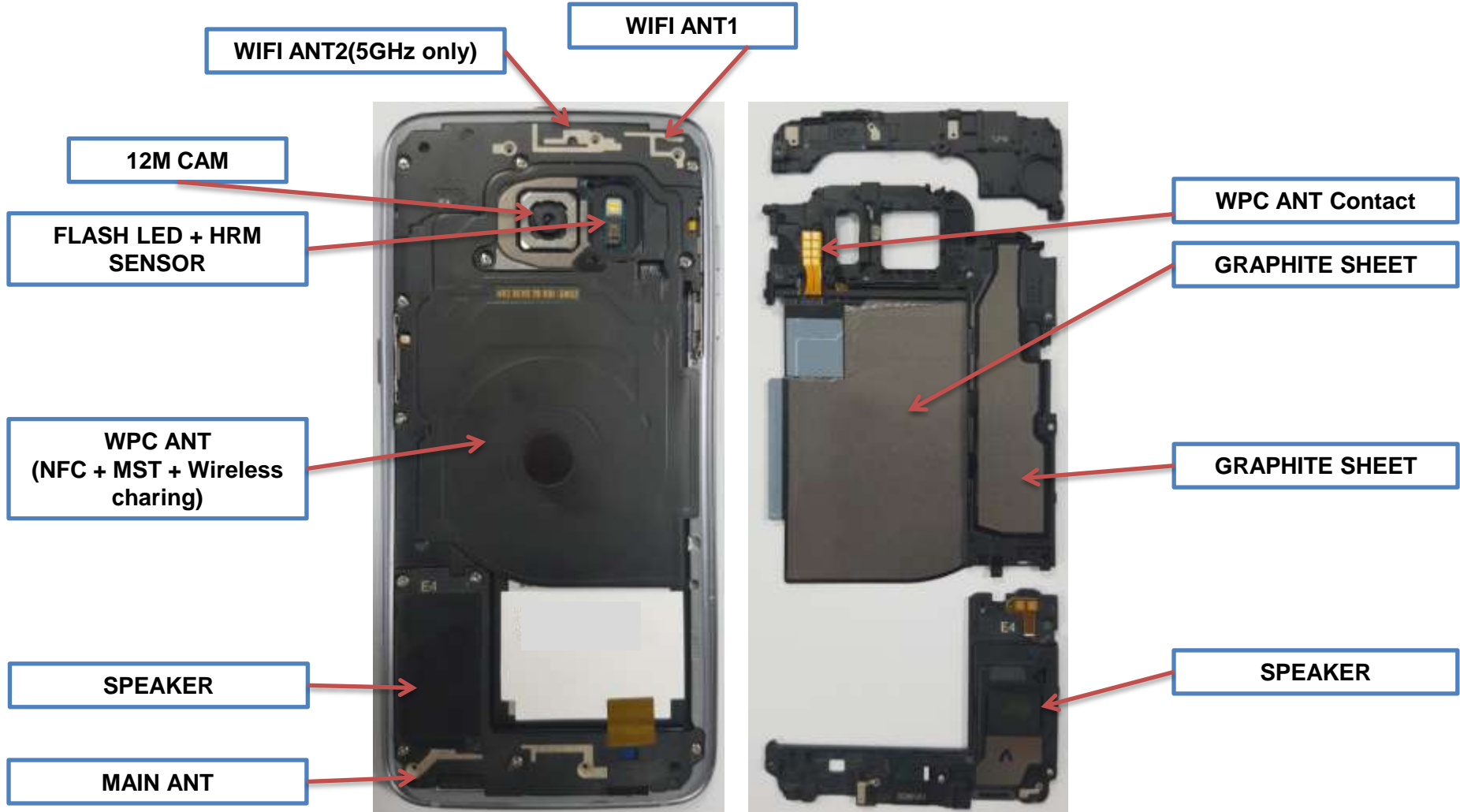


# Disassembly & Reassembly



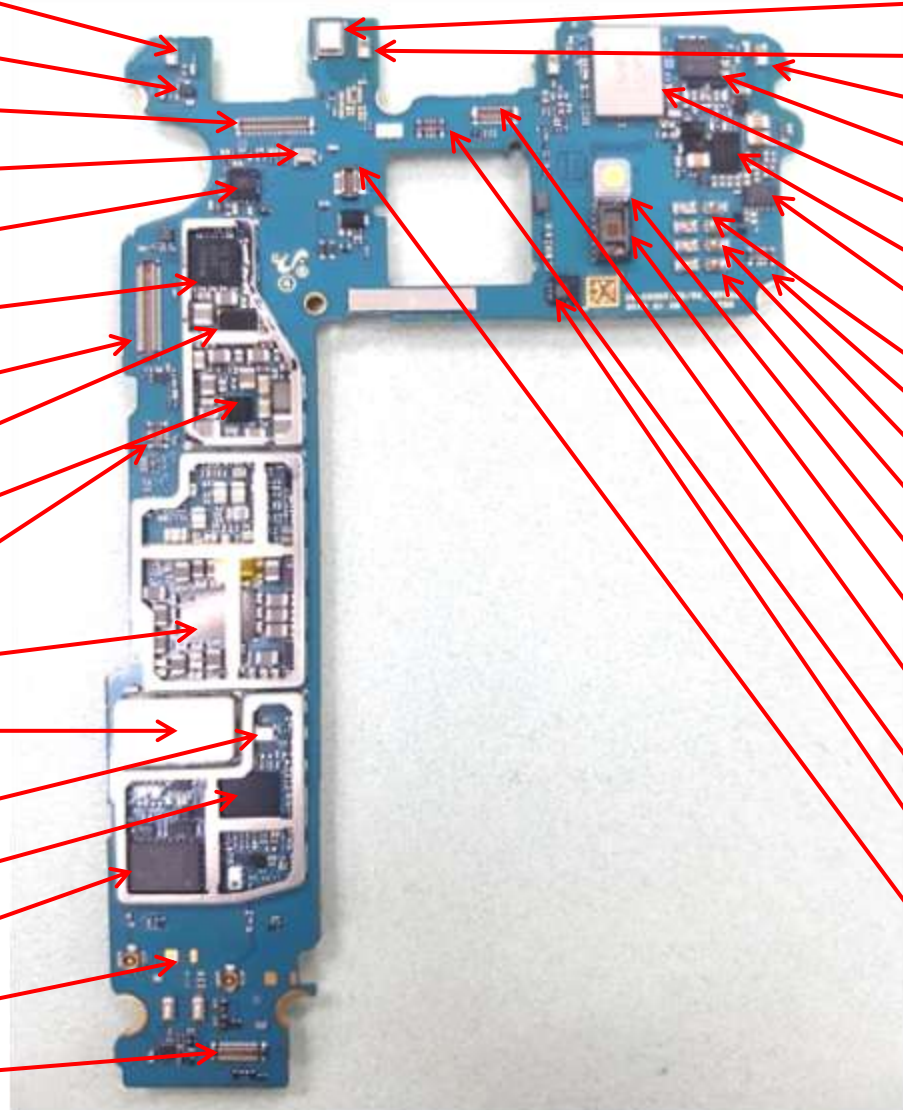
# Parts Layout

## Rear Case



# Parts Layout

## PBA (Top side)

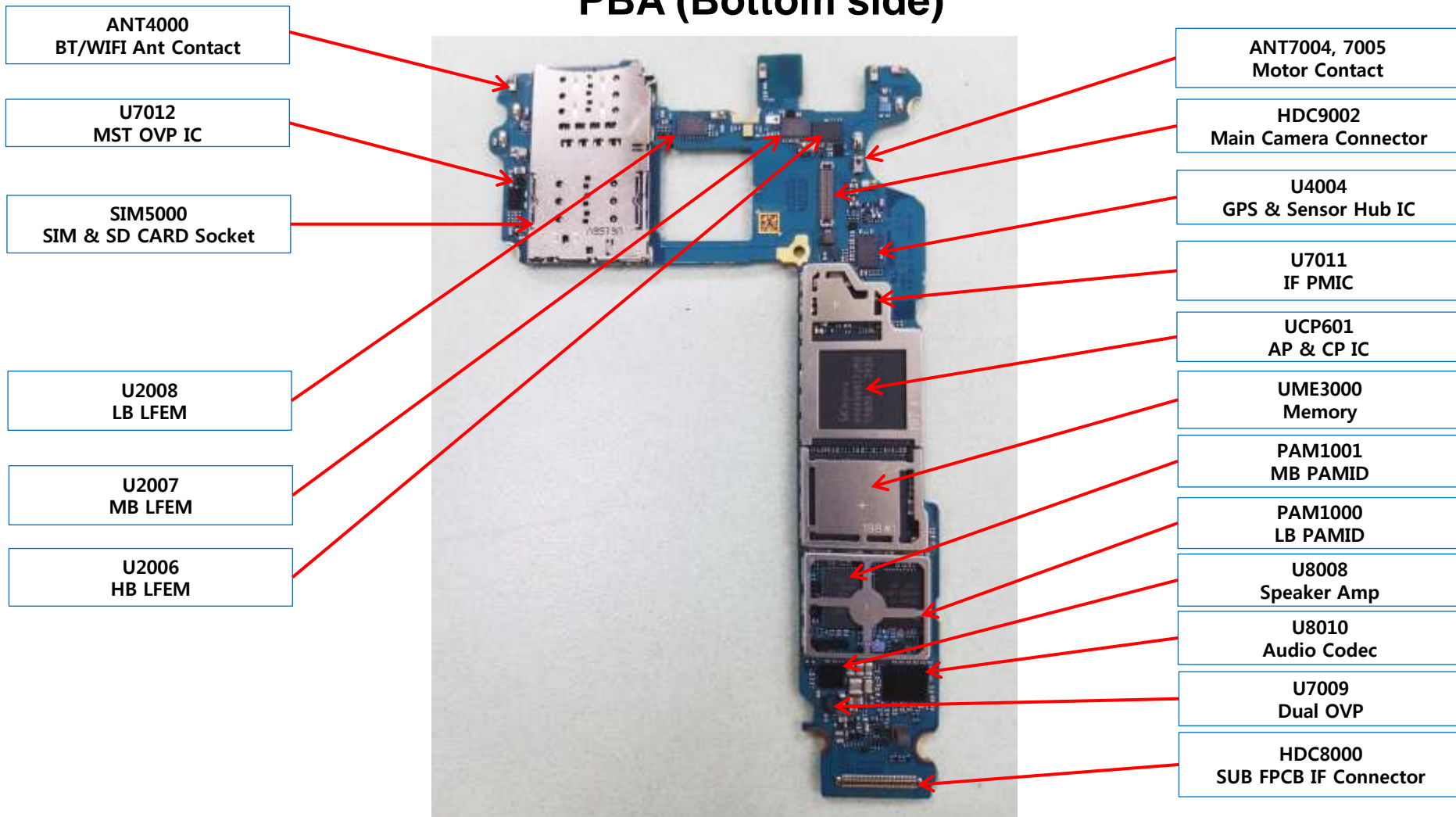


- ANT2004  
HB SUB Ant Contact
- U4000  
GPS LNA
- HDC9000  
VT CAM Connector
- OSC4000  
GPS Clock
- U4006  
6 Axis sensor
- U9005  
Companion IC
- HDC9001  
UB Connector
- U7001  
SUB PMIC
- U9010  
Display PMIC
- HDC7001  
Power key Connector
- U7000  
AP PMIC
- U1006  
S735 ET Modulator  
(inside shield can)
- TCX3000  
26MHz TCXO
- U3003  
Transceiver
- PAM1002  
HB PAMID
- ANT8000, 8001  
Speaker Contact
- HDC4001  
BTP IF Connector

- MIC8000  
2<sup>nd</sup> MIC
- ANT2005  
LB/MB SUB Ant Contact
- ANT4001  
BT/WIFI Ant Contact
- U4012  
NFC IC
- U4005  
BT/WIFI IC
- U7008  
Wireless Charging IC
- U7014  
MST IC
- ANT7006, 7007  
MST Ant Contact
- HDC7002  
Volume key Connector
- ANT4004, 4005  
NFC Ant Contact
- ANT7000, 7002  
WPC Ant Contact
- LED7000  
Camera Flash
- U4010  
HRM Sensor
- HDC4000  
Proximity Sensor & MIC  
& SVC LED Connector
- HDC8001  
RCV Connector
- U4007  
Barometer Sensor
- HDC7000  
Battery Connector

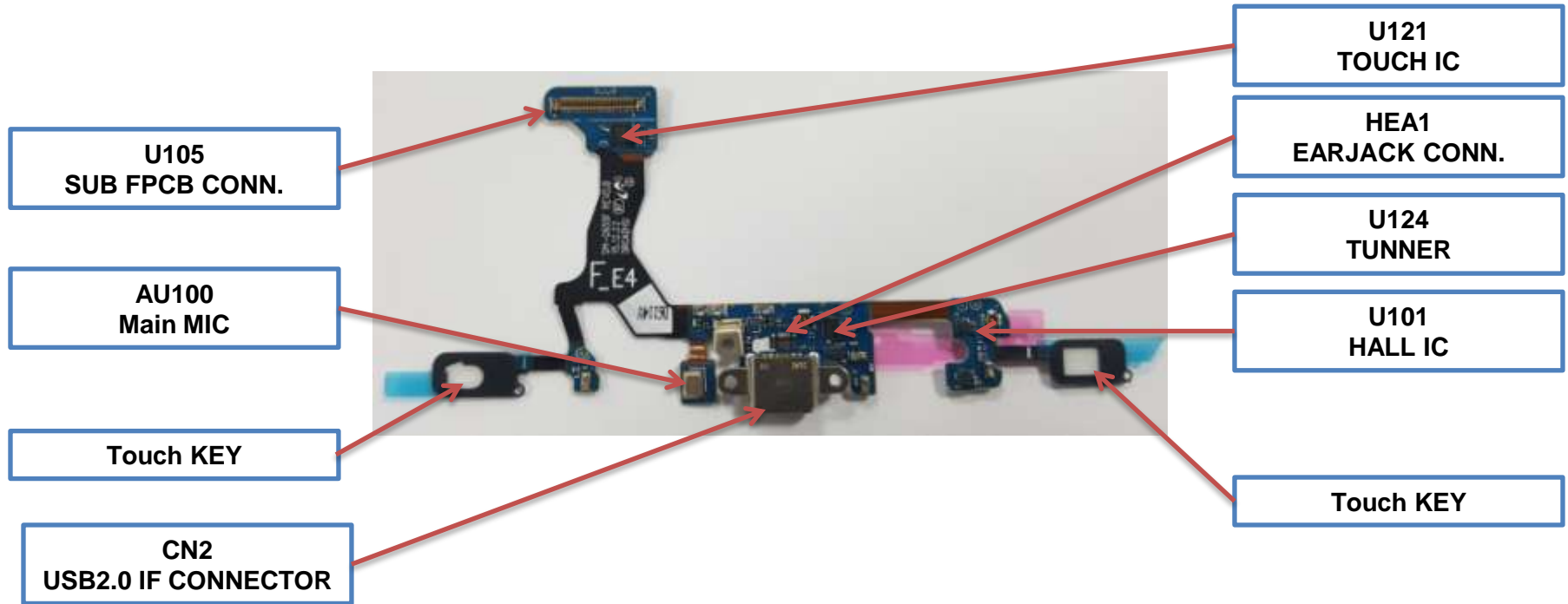
# Parts Layout

## PBA (Bottom side)




# Parts Layout

## SUB PBA



# Troubleshooting

## No Power

Step	Check point	Result value	Defect point
1	Confirm the defect symptom	-	-
2	<b>** Analyse reasons of No-Power using the Power &amp; Current test jig Power test mode.</b> 	PASS	Battery, Battery connector, Physical Key
		Leakage Current fail	Go to the step 2.1
		Power On Current fail	Go to the step 3
2.1	Check the Resistance between JIG Power V_Battery / VPH_PWR/ V_BAT and Ground. (C701,C805)	Normal (Over dozens of KΩ)	Go to the step 5
		Abnormal	Capacitors for ESD protection
3	It's possible to enter the download mode?	Yes	Go to the step 3.1
		No	Go to the step4
3.1	Check if it's rooted.	Rooted	OOW
		Normal	S/W update
4	Check the voltage of C7129	C7129 = Power supply voltage	Go to the step 5
		If not the correct value	Replace the U7011
5	Check the voltage of L7010(=PMIC Output)	L7010 = 0.8V	Go to the step 6
		If not the correct value	Replace the U7000

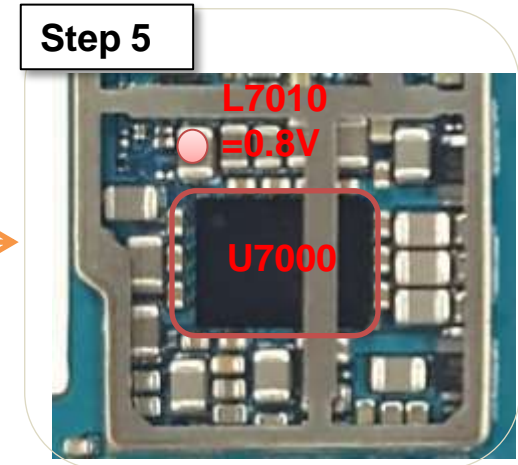
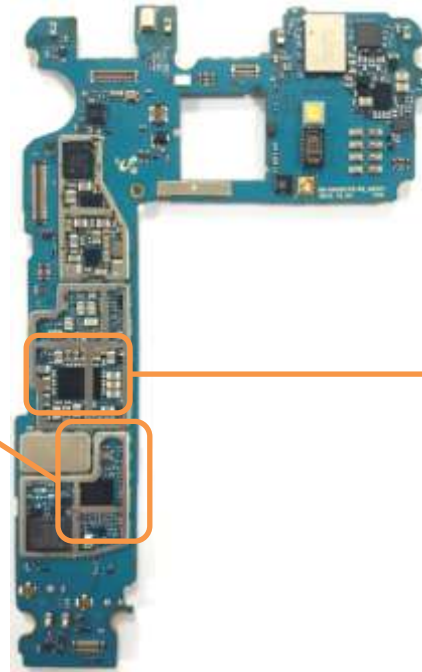
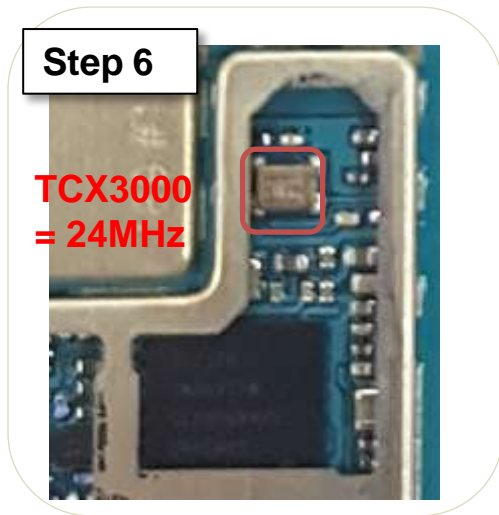
**\*\* Usage guide of the Power & Current test jig has been uploaded at GSPN. (Power & Current Tester\_Rev4\_150716.pdf)**



# Troubleshooting

## No Power (cont')

Step	Check point	Result value	Defect point
6	Check the frequency of TCX3000	26MHz	Main chip (UCP601)
		If not the correct value	X-TAL (TCX3000)



# Troubleshooting

## Power on but no operation (freezing)

Step	Check point	Result value	Defect point
1	Confirm the defect symptom	-	-
2	** Analyse reasons of No-Power using the <b>Power &amp; Current test jig</b> .	PASS	Go to the step 1
		Leakage Current fail	Refer to the No-power Troubleshooting
		Power On Current fail	Go to the step 3
3	It's possible to enter the download mode?	Yes	Go to the step 3.1
		No	Go to the step 4
3.1	Check if it's rooted.	Rooted	OOW
		Normal	Go to the step 4
4	Enter the safe mode, and check if powers up.	Solved	3 <sup>rd</sup> party Apps.
		Not solved	Go to the step 5
5	Perform full reset.	Solved	S/W or 3 <sup>rd</sup> party Apps
		Not solved	Go to the step 6
6	Upgrade software to the latest version.	Solved	S/W
		Not solved	Replace the eMMC

\*\* Usage guide of the Power & Current test jig has been uploaded at GSPN. (Power & Current Tester\_Rev4\_150716.pdf)

# Troubleshooting

## No Charging

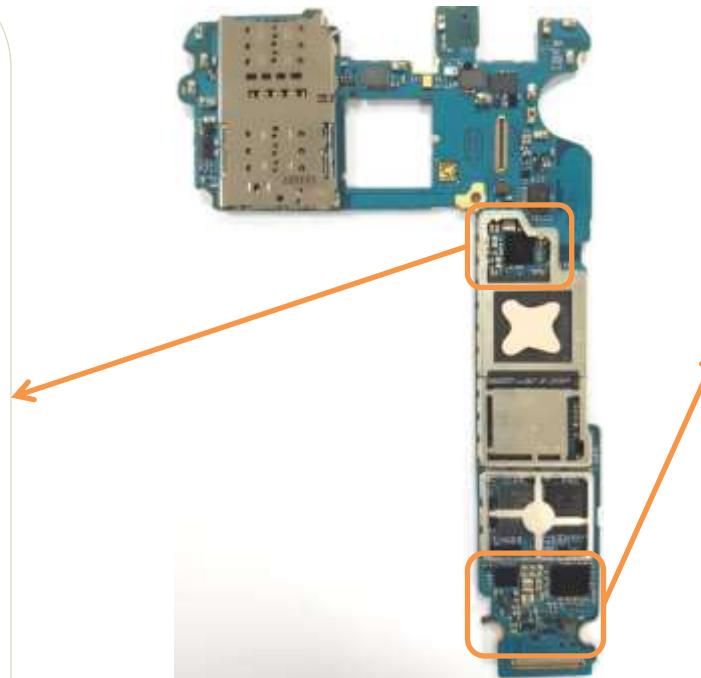
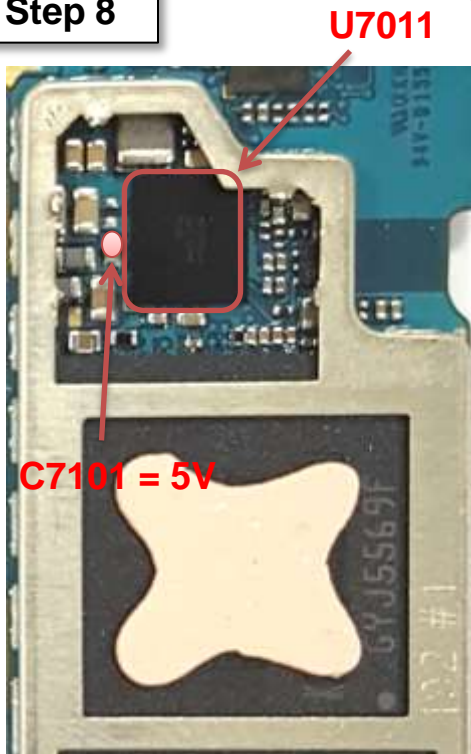
Step	Check point	Result value	Defect point
1	Confirm the defect symptom	-	-
2	Charge the customer battery during 5min at least.	Solved	Totally discharged battery
		Not solved	Battery
3	** Analyse reasons of No-Charging using the <b>Power &amp; Current test jig Charging test mode</b> with no defect charger. (Test battery voltage should be below 85%)	PASS	Go to the step 4
		FAIL	Go to the step 5
4	** Test a <b>customer's charger</b> using the <b>Power &amp; Current test jig TA test mode</b> .	PASS	Go to the step 1
		FAIL	Customer's Charger
5	Disassemble and check I/F connector visually	Dust	Clean I/F connector
		Damage	Replace I/F connector
		Normal	Go to the step 6
6	Replace a battery	Solved	Go to the step 1
		Not solved	Go to the step 7
7	Check the voltage of L7022	L7022 = 5V	Go to the step 7
		If not the correct value	may not connected charger
8	Check the voltage of C7101	C7101 = 5V	Replace the U7011
		If not the correct value	Replace the U7009

\*\* Usage guide of the Power & Current test jig has been uploaded at GSPN. (Power & Current Tester\_Rev4\_150716.pdf)

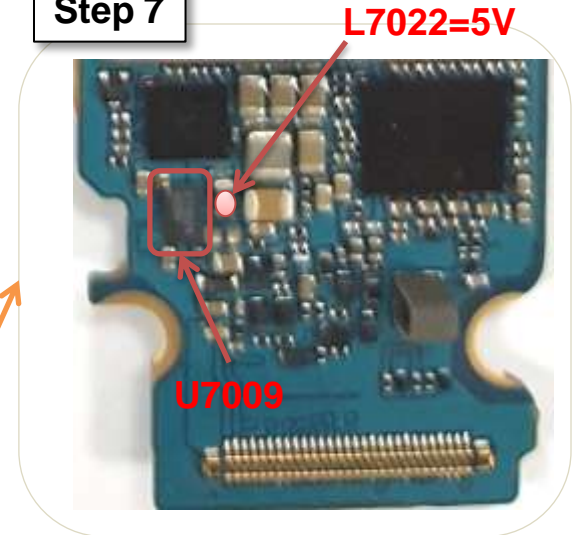
# Troubleshooting

## No Charging

Step 8



Step 7



# Troubleshooting

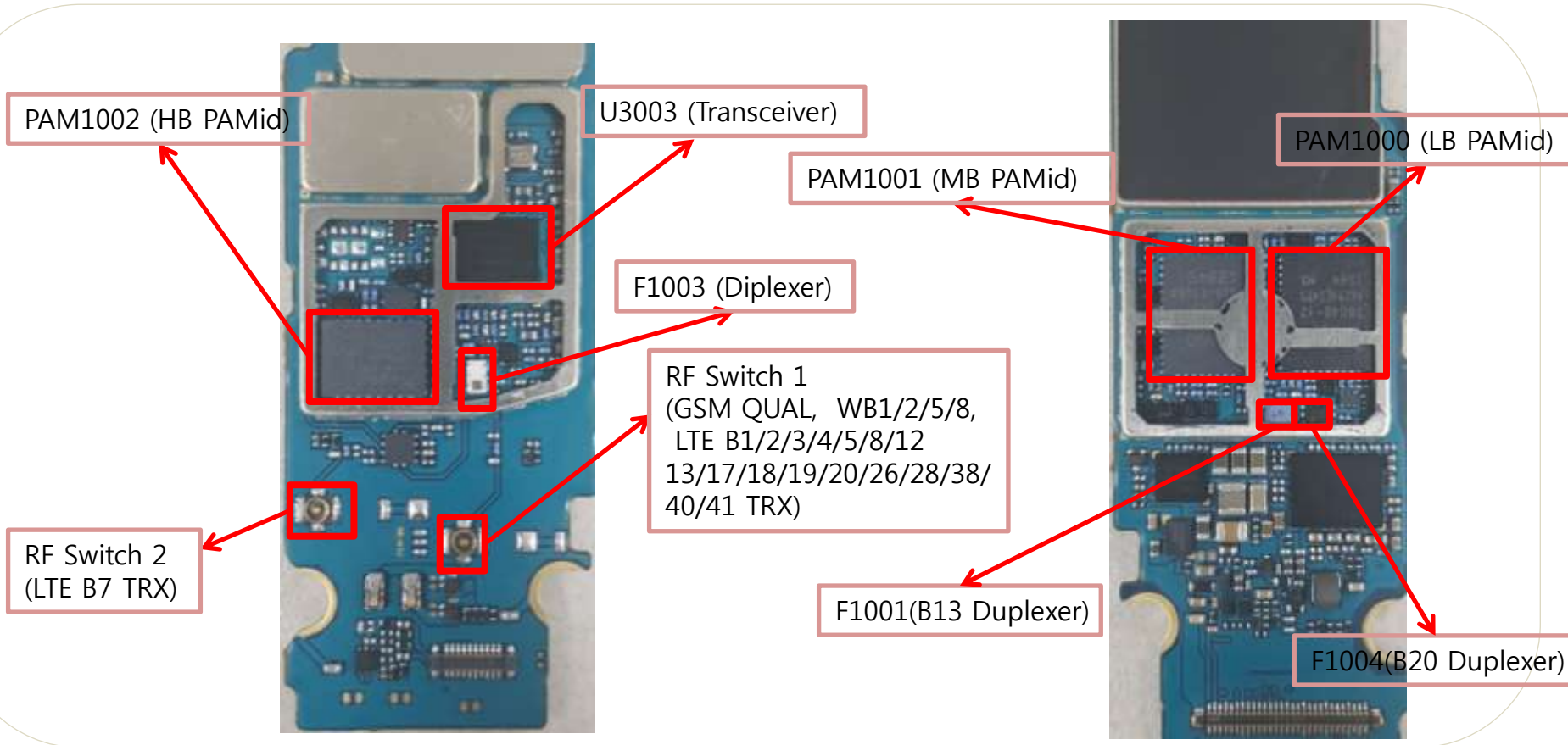
## Call Problem (with RF equipment)

Step	Check point	Result value		Defect point
1	Confirm the defect symptom	-		-
2	RF radiation test	Pass		Network or Settings
		Fail		Go to the next step
3	RF calibration	Pass		Go to the step 4
		Fail		Go to the step 5
4	RF radiation test	Pass		Repaired
		Fail		Except PBA (Coaxial cable, Antenna, Shielding condition)
5	A type of failure	TX	Low band	Diplexer, low band PAMid, Duplexer, Transceiver
			Mid band	Diplexer, Mid band PAMid, Duplexer, Transceiver
			High band	Diplexer, HB PAMid, Transceiver
		RX	Low band	Diplexer, low band PAMid, Duplexer, Transceiver
			Mid band	Diplexer, Mid band PAMid, Duplexer, Transceiver
			High band	Diplexer, HB PAMid, Transceiver

# Troubleshooting

## Call Problem

Step5





# Troubleshooting

## Call Problem (without RF equipment)

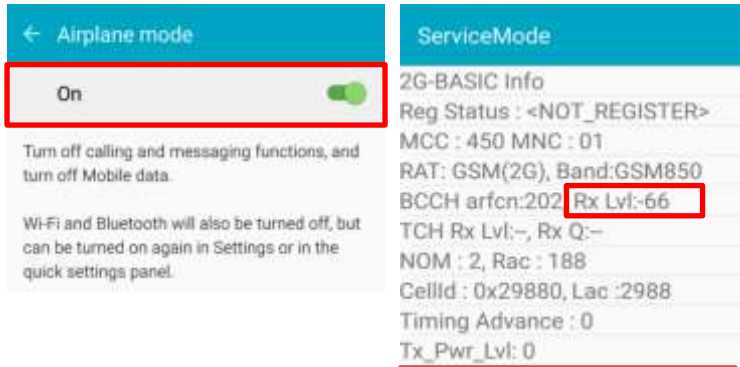
Step	Check point	Result value	Defect point
1	Confirm the defect symptom	-	-
2	Check the settings (airplane mode, Mobile networks)	Abnormal	Settings
		Normal	Go to the next step
3	Check the debug screen *#0011# (Compare to normal device)	Abnormal	Go to the next step
		Normal	Network
4	Check the RF parts except PBA. (Coaxial cable, Antenna, Shielding condition, etc..)	Broken, dust, corrosion	RF parts
		Loose fitting	Connection
		Normal	Go to the next step
5	Check the status visually(crack, missing, Corrosion..etc) of RF components. (compare to normal PBA)	Abnormal	RF components.
		Normal	CP(Call Processor) (UCP601-2)
5	U3003 Transceiver PAM1000 Low band PAMid(PAM + FEMid) PAM1001 Mid band PAMid(PAM + FEMid) PAM1002 High band PAMid(PAM + FEMid) F1001,1004 Duplexer F1003 Diplexer		

# Troubleshooting

## Call Problem

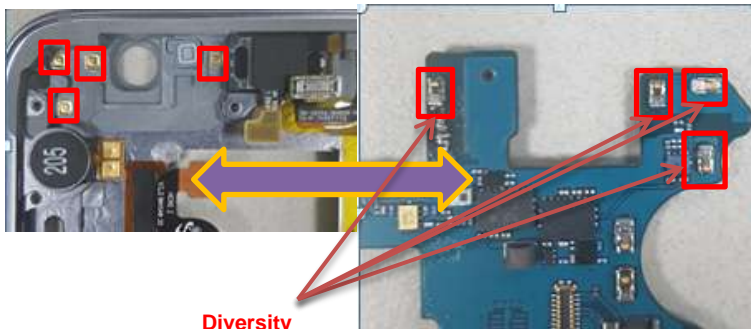
### Step2,3

CHECK SETTINGS



**DEBUG SCREEN STATUS**  
Same value compare to normal device.

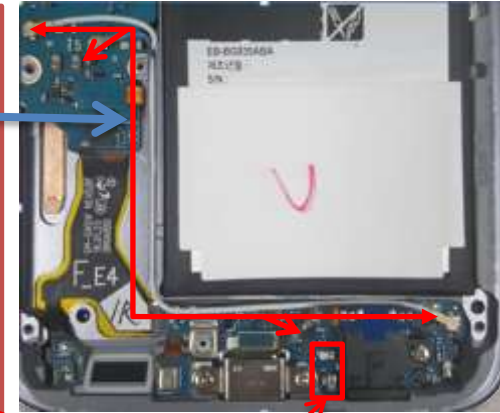
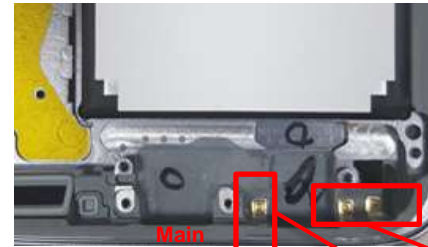
### Step4



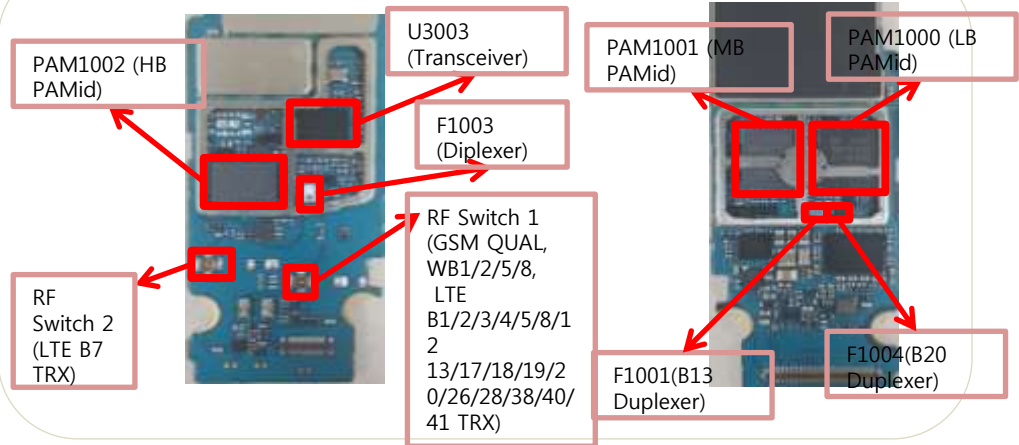
Diversity ANTENNA contact

### Step4

Coaxial cable (connect Main Ant. with PBA)



### Step5



# Troubleshooting

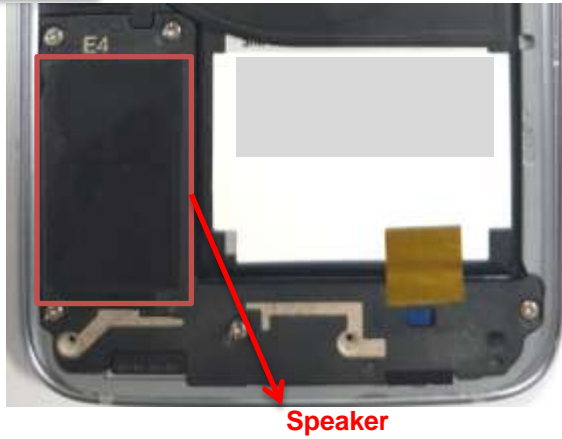
## Sound Problem

Step.	Check point	Result value	Defect point
1	Confirm the defect symptom.	-	-
2	*#0*# → speaker	No sound	Go to the next step
		Normal	S/W or Settings
3	Replace the speaker	Solved	speaker
		Not solved	Go to the next step
4	Activate the speaker path. (*#0*# → Speaker)	-	-
5	Check the signal at two of speaker contacts. (Using oscilloscope) Notice : It should be measured when the speaker path is activated on.	Same signal compared with a good PBA	Go to step 6
		No signal	Audio Codec (U8010)
6	Check if the SPK is contacted to PBA well, and assemble the phone again.	Solved	Assembly error
		Not solved	Go to step 3

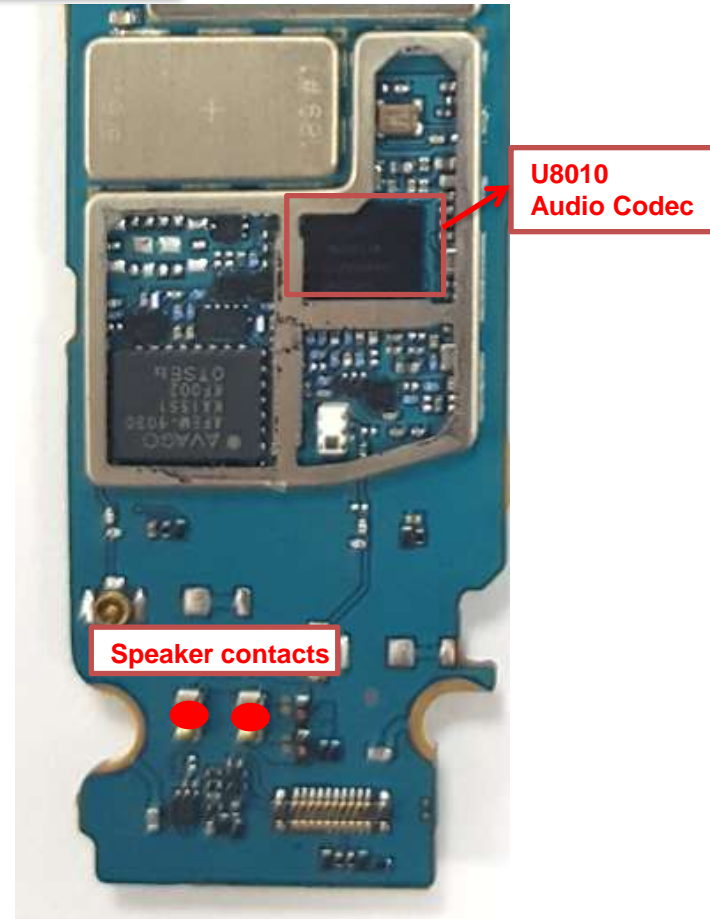
# Troubleshooting

## Sound Problem

Step 3



Step 5, 6



# Troubleshooting

## Display Problem

Step	Check point	Result value	Defect point
1	Confirm the defect symptom	-	-
2	Check the UB connector (HDC9001)	Broken, dust, corrosion	UB connector (HDC9001)
		Loose fitting	Connection
		Normal	Go to the next step
3	Replace the UB ass'y	Solved	UB ass'y
		Not solved	Go to the next step
4	Connect a UB, and display on with a power supply (power supply voltage : 4.0V)	-	-
5	Check the voltage of C90000, C90005 Notice. It should be measured when the display is activated on	If not the correct value	Display PMIC(U9010)
		C90000=3.0V C90005=1.6V	Go to the next step
6	Check the voltage of following chips (C9023,C9022,C9027) Notice. It should be measured when the display is activated on	If not the correct value	Display PMIC(U9010)
		C9023=4.6V C9022=-1.4~-5.4V C9027=5.8~7.9V	MAIN CHIP

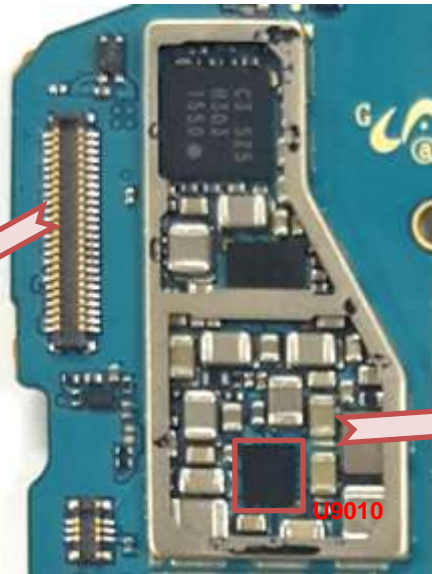
# Troubleshooting

## Display Problem

Step2

LCD CONNECTOR

HDC9001



Step5, 6



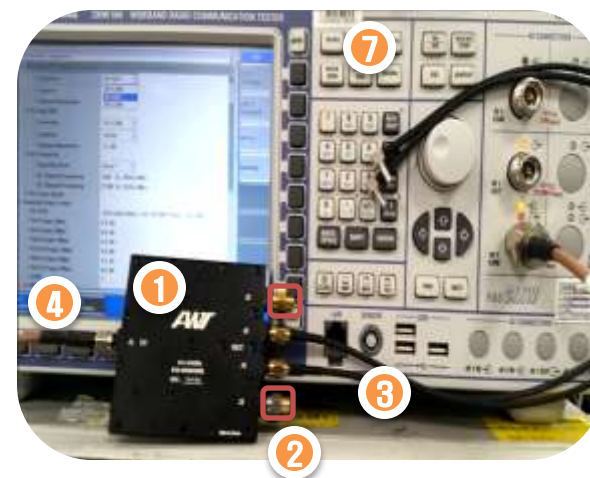
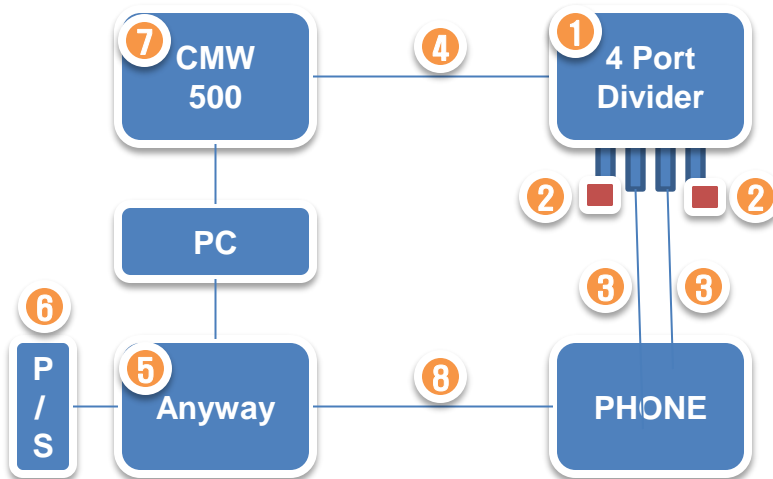


# RF Calibration Preparation

Item	Quantity	Code
① 4 Port Divider	1	GH81-11962A
② 50 ohm Termination	2	GH81-11962E
③ RF cable (Divider to phone)	2	GH81-11962M
④ RF cable (Instrument to divider)	1	GH81-11962U
⑤ Anyway JIG	1	-
⑥ Power Supply	1	E3632A
⑦ RF Equipment	1	CMW500
⑧ IF cable	1	GH81-10952A



Connection Diagram

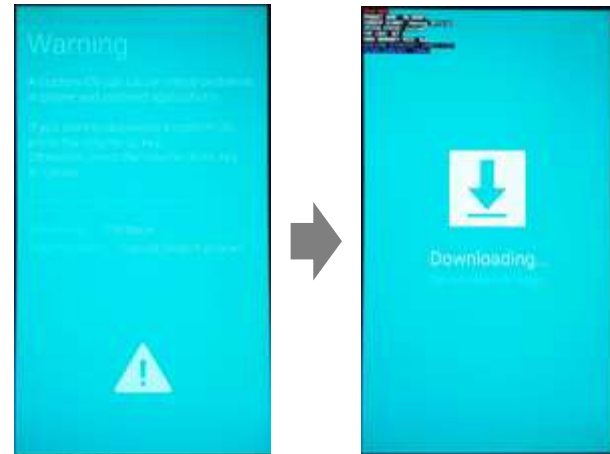


# S/W Download

## How to enter the S/W download mode

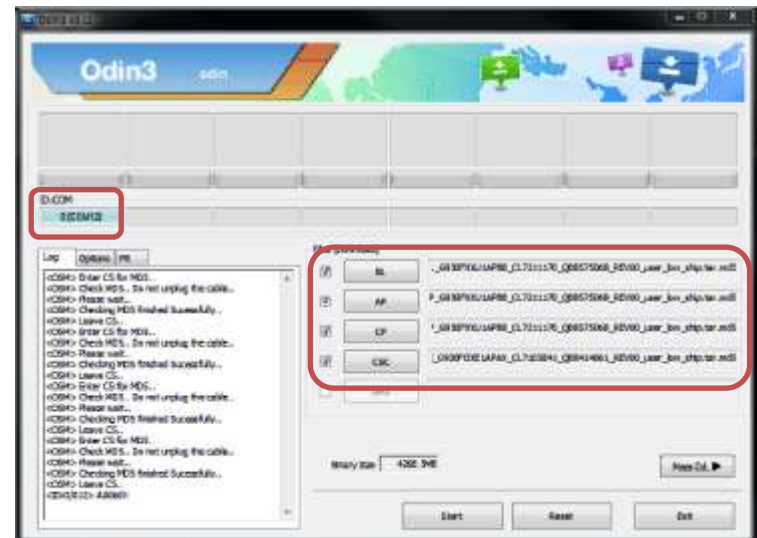
1. Turn off the device
2. Press 3 buttons simultaneously  
( Volume down + Home + Power on)
3. Press volume up button after 'Warning' message.
4. Connect the USB cable after 'Downloading' message.

For force to reset, press Volume Down+Power key during 7 sec.



## How to download S/W

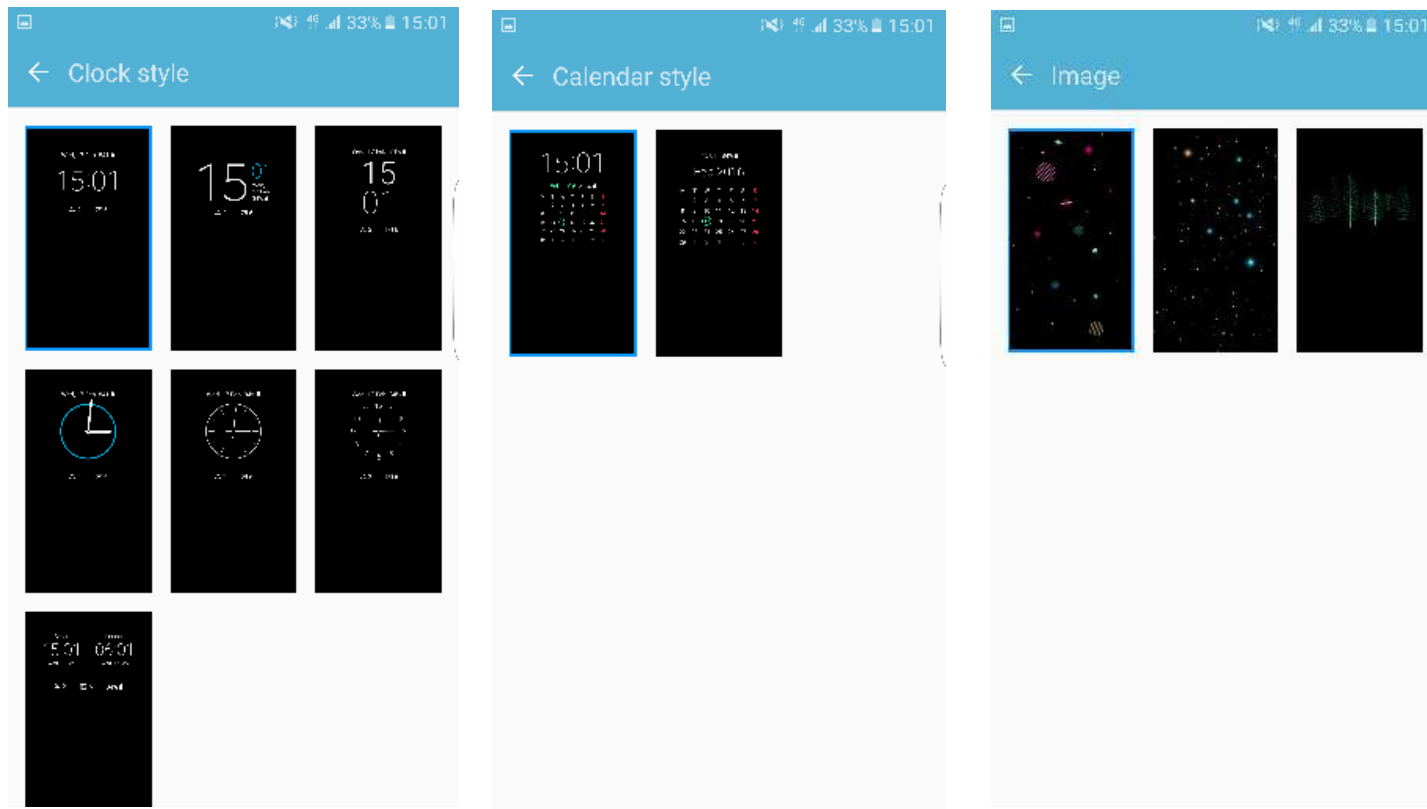
1. Run the Odin tool with 3.11+ and check the device is connected to Odin.
2. Select each 4 S/W files.  
(BL, AP, CP, CSC)
3. Press the start button in the Odin.
4. Automatically reboot the phone when the downloading is completed.



# Key Features for G930F/G935F

## Always On Display

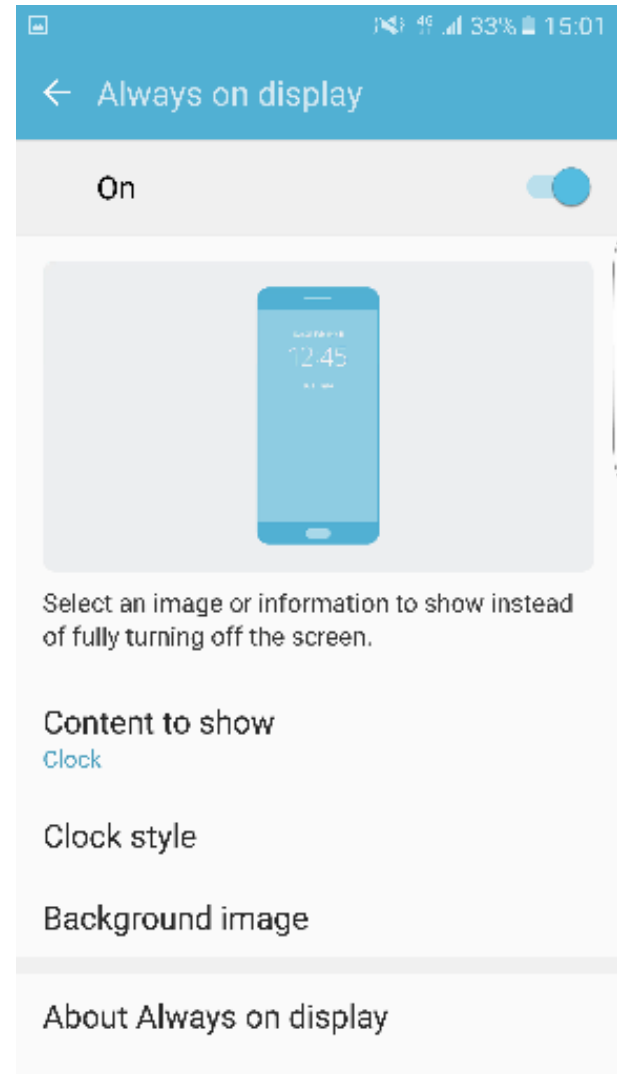
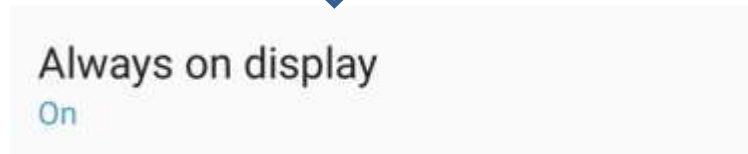
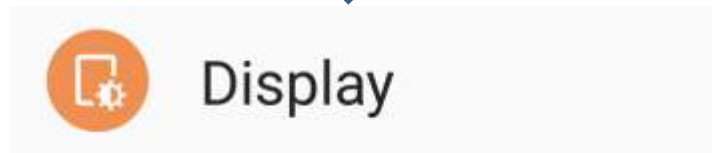
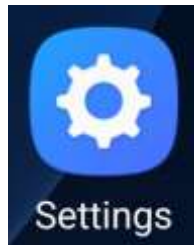
- Show clock/calendar/image during LCD off
- Estimated usage time will be reduced by approximately 1~2 hour after AOD on
- For avoiding LCD burn, location of image will move per 1 min.



# Key Features for G930F/G935F

## Always On Display

Entering Path :

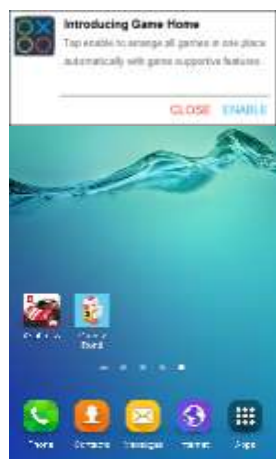


# Key Features for G930F/G935F

## Game Launcher

### UX scenario

- Activated when 1<sup>st</sup> game is installed from any store (Google / Galaxy apps)
- Gathers installed games automatically (For quick access)
- Game features / settings for improving game experience
- Promote new offers and games

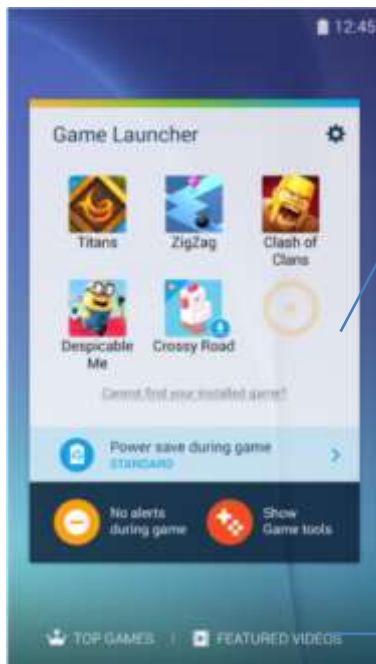


**My Games**  
Gather installed games

**Game features**  
To improve game experience

**Game & video recommendation**

After 1<sup>st</sup> game is installed, pop-up occurs to request the activation of the service



### Main features

#### <Save battery usage while playing>

To lower power consumption, it controls brightness, resolution, frame rate of a game



#### <No alerts during game>

discrete call & alarm notification, suspend notifications

#### <Game tools>

Display the game features while playing



#### <Top Charts>

Game Rankings based on usage data of galaxy devices

#### <Game Videos>

popular YouTube videos related with the installed games on the device

# Key Features for G930F/G935F

## Game Launcher

### - Power save during game

#### [ Details ]

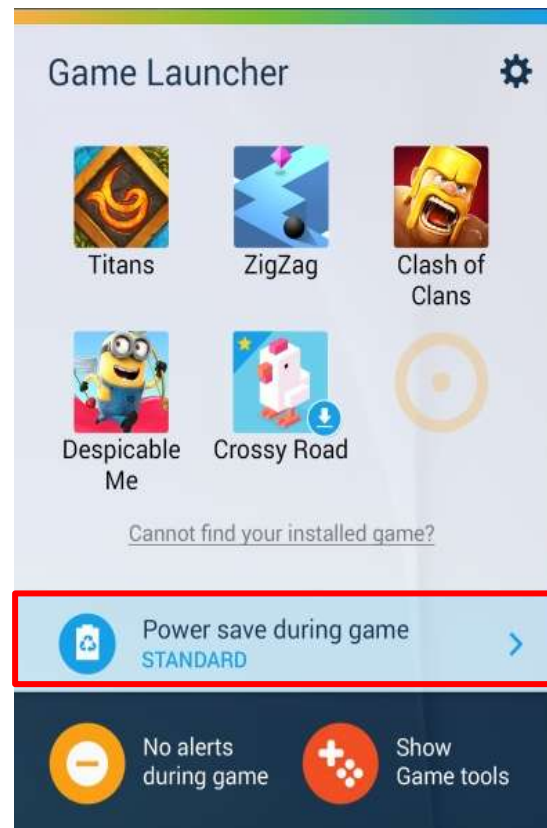
- Save battery consumption via Brightness, Resolution and FPS control
- Reduction of 10~20% battery usage than existing function
- Custom settings
  - Resolution : Standard / Low / Extreme low
  - FPS : 15FPS ~ 60FPS (adjustable every 5FPS)

#### [ Functions comparison with other solutions ]

- Power saving mode : Save battery power by reducing screen brightness, turning off the touch key light, turning off Vibration feedback etc.
- Power Save for game : Brightness, Resolution and FPS control

#### [ Estimated saving rate on real games ]

- Increase playtime about average 19%
- Additional playtime
  - Clash of Clans : 2.31 Hours
  - Candy Crush Saga : 0.96 Hours
  - Cookie Run : 3.75 Hours





# Key Features for G930F/G935F

## Game Launcher - No alerts during game

### UX scenario



No alerts during game : ON

Game play



\* Game play screen under 'No alerts during game' mode

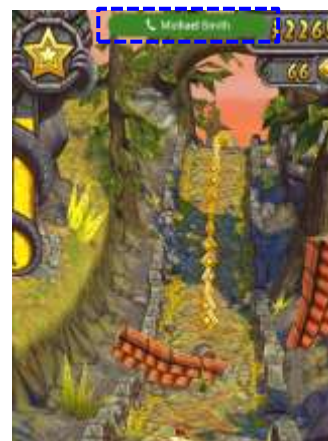
### Feature detail

#### [ No alerts in game ]

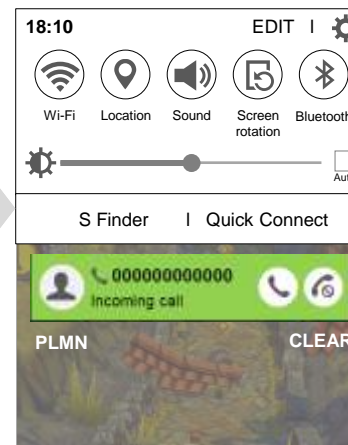
- Letting a player to focus on his play by minimizing incoming calls and suppressing SMS, and other pop-up notification.
- Call is notified with a discrete pop-up and disappear after 3 sec.
- All missed calls and notifications are stacked in the quick panel.

#### [ Comparison with 'Do not disturb' feature]

- Do not disturb : Device to mute all calls and alerts.
- No alerts in game : Mute all calls and alerts, discrete pop-up for calls, stack notifications in the quick panel without pop-up



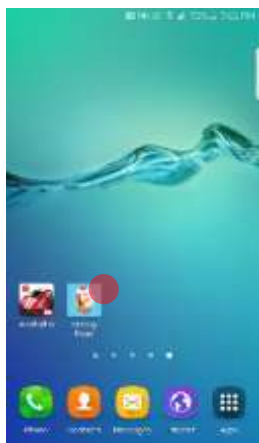
\* call's pop-up notification. If user clicks, then available to answer the call via the quick panel.



# Key Features for G930F/G935F

## Game Launcher – Game tool

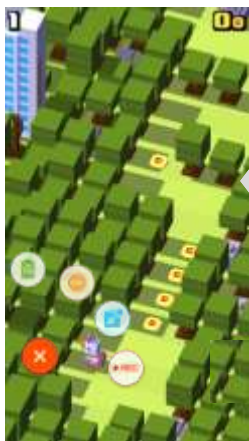
### UX Scenario



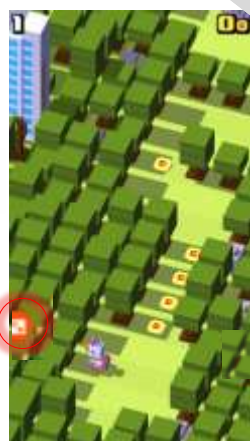
Game start



Guide at 1<sup>st</sup> launch



- Floating icon\* for opening Game tools



### Main Feature

#### [ Screenshot ]

- Capture game screen while playing
- Easy to do by just touching the screen (instead of H/W button)

#### [ No interruption ]

- Minimize incoming call, message, alarm via discrete pop up
- Pop-up consists in 3 sec. discrete visual on top of the screen

#### [ Keep Alive game ]

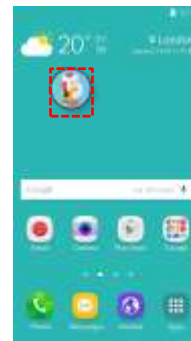
- Minimize the game without terminating the application

#### [ Game Record ]

- Video recording the game while playing
- Use front camera and in-and-out sound recording at the same time



Pop-up



Keep alive game

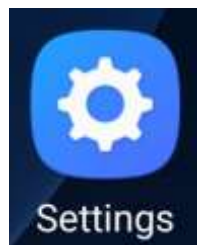


Game video recording  
(w/ front camera & Sound)

# Key Features for G930F/G935F

## Game Launcher / Tool

Entering Path :

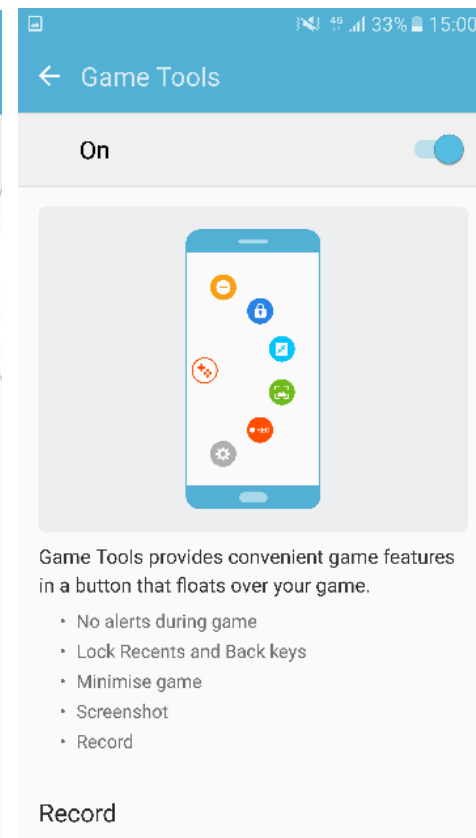
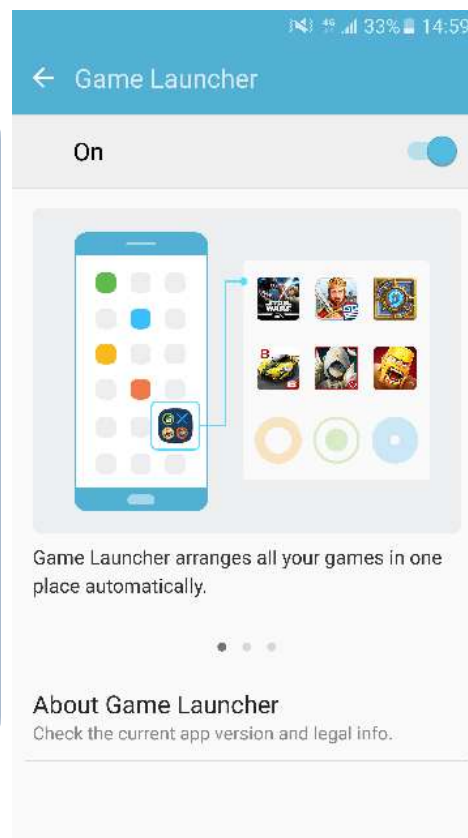


Advanced features



Games

Manage useful features while you play games.



# Key Features for G930F/G935F

## Camera

### Quick Focus in the low light

AF in low light –approx. 0.2 sec / S6 : 0.85 sec

### Motion Panorama

Panorama image/video captured at the same time with just one shot

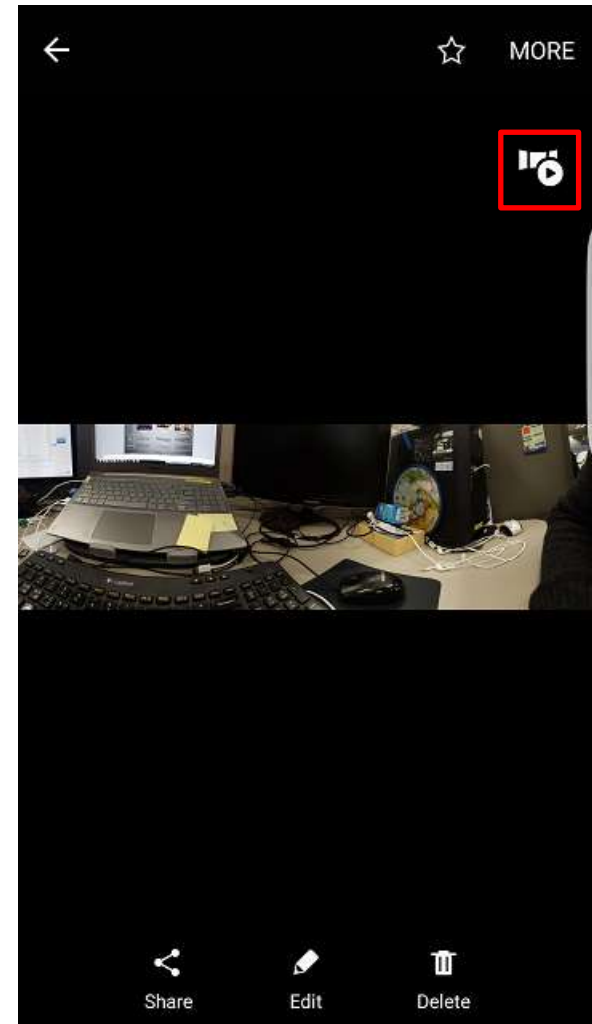
### Motion Photo

Record a short video clip of what happens before each picture is taken

### Save as RAW file

Save pictures without compression in Pro mode.  
When this option enabled, each picture will be saved as both a RAW file and a JPG file. Additional viewer app is needed for RAW file.

**Entering Path : CAMERA → Tab a selective focus Icon**

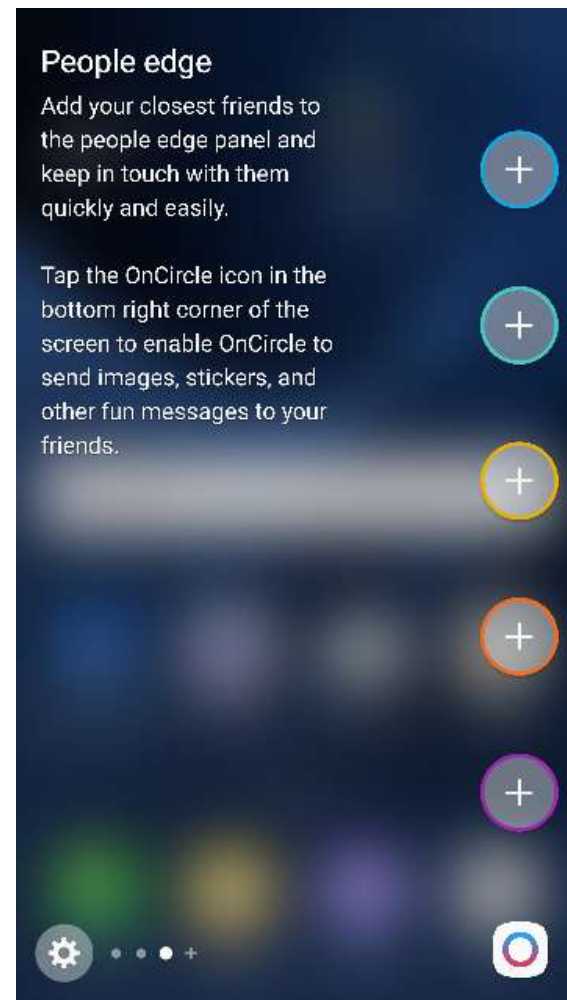
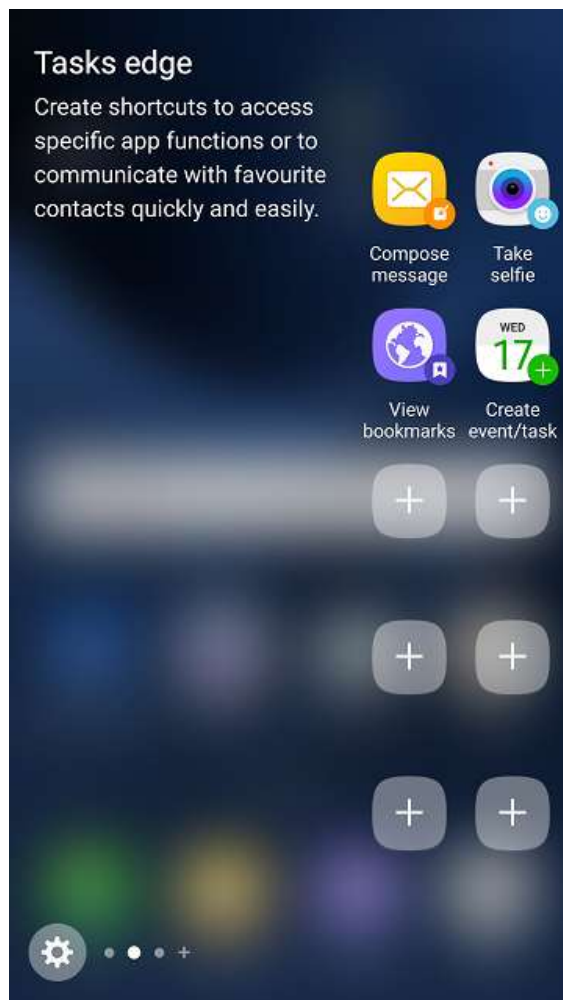
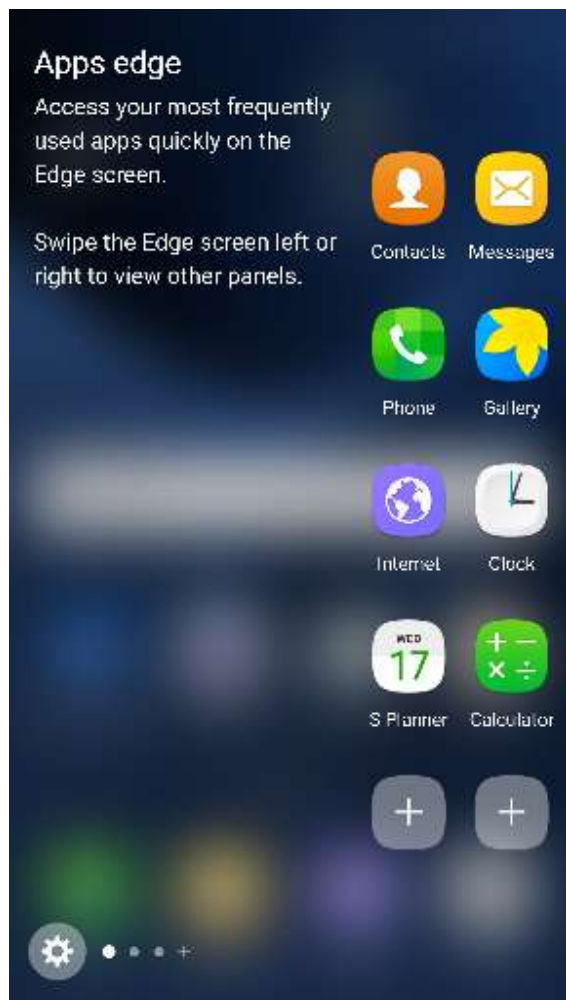




# Key Features for G935F only

## Enhanced Edge UX

- Edge region is wider and useful shortcut added



# SVC Technical Information

## Basic Information

AP Chipset	CP Chipset	IF Cable	RF Cable		RF Divider
	SEC S5E8890	GH81-10952A	GH81-11962M (pi : 1.2T)		GH81-11962A
Charger Spec			Charging Current Standard	New Pocket Type	Water Resistance
Adaptive (5.0 V-2A, 9.0V-1.67A)			-	-	IP68

## SVC Jig List for Galaxy S7 Edge

Item	Code	Item	Code
Hot Plate	GH81-12712E(220V)	Acryl Jig Rework Foam	GH81-12065B
OCTA Disass'y Holder	GH81-12119A	OCTA Disass'y Jig Upper	GH81-12833A
Glass Absorber	GH81-11902D	Double Sided Tape	GH81-12126A
TSP tape Attaching JIG	GH81-11905A	Pressing JIG Body	GH81-11903A
Pressing Pad(for OCTA/battery)	GH81-13537J	Pressing Pad(for Battery)	GH81-12694A
Weight and Pad for water resistance Test	GH81-12046A		





Copyright © 2014 Samsung Electronics

This guide is protected under international copyright laws.

No part of this guide may be reproduced, distributed, translated, or transmitted in any form or by any means, electronic or mechanical, including photocopying, recording, or storing in any information storage and retrieval system, without the prior written permission of Samsung Electronics.