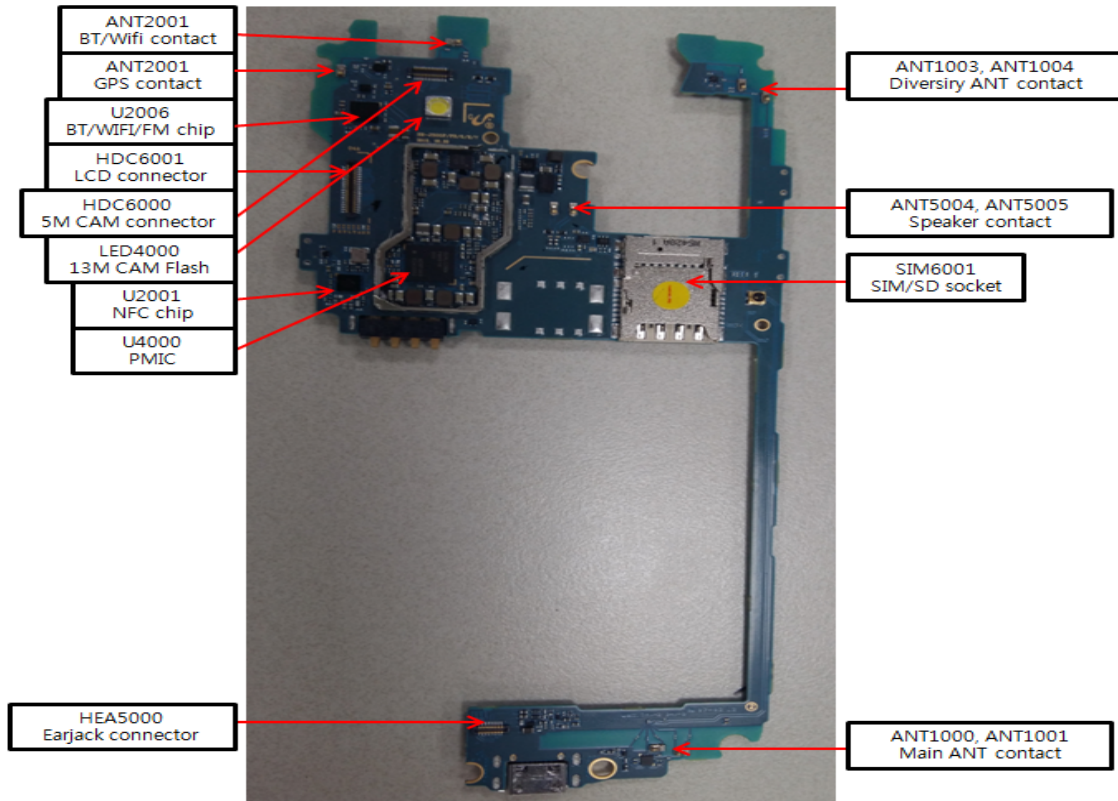
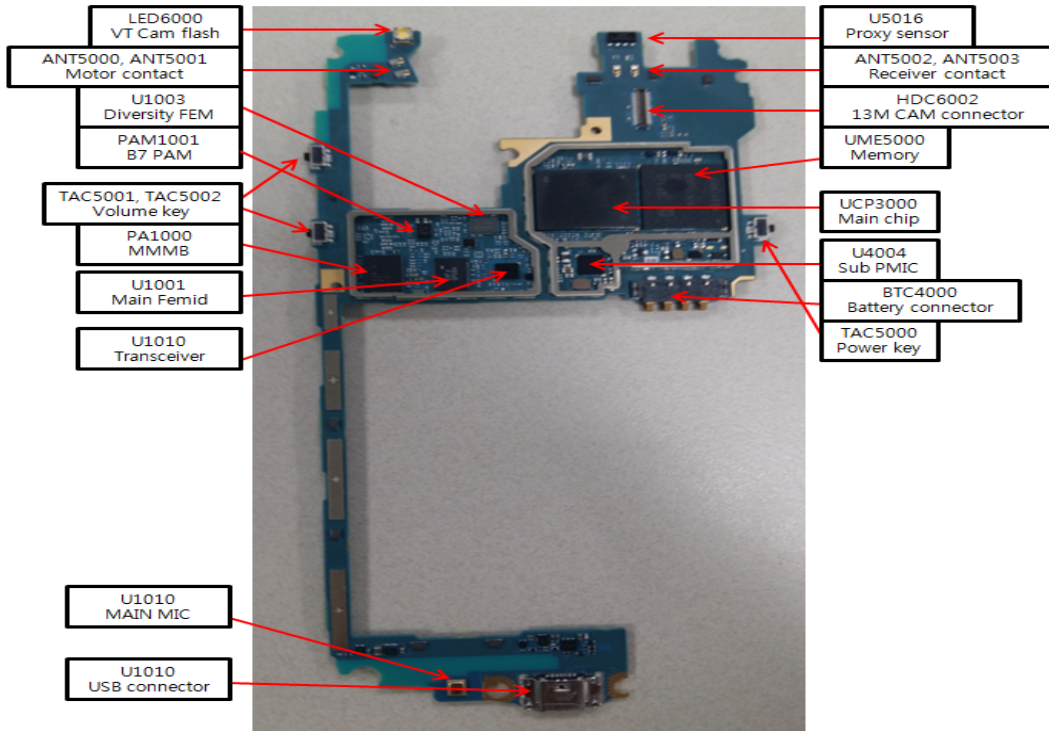
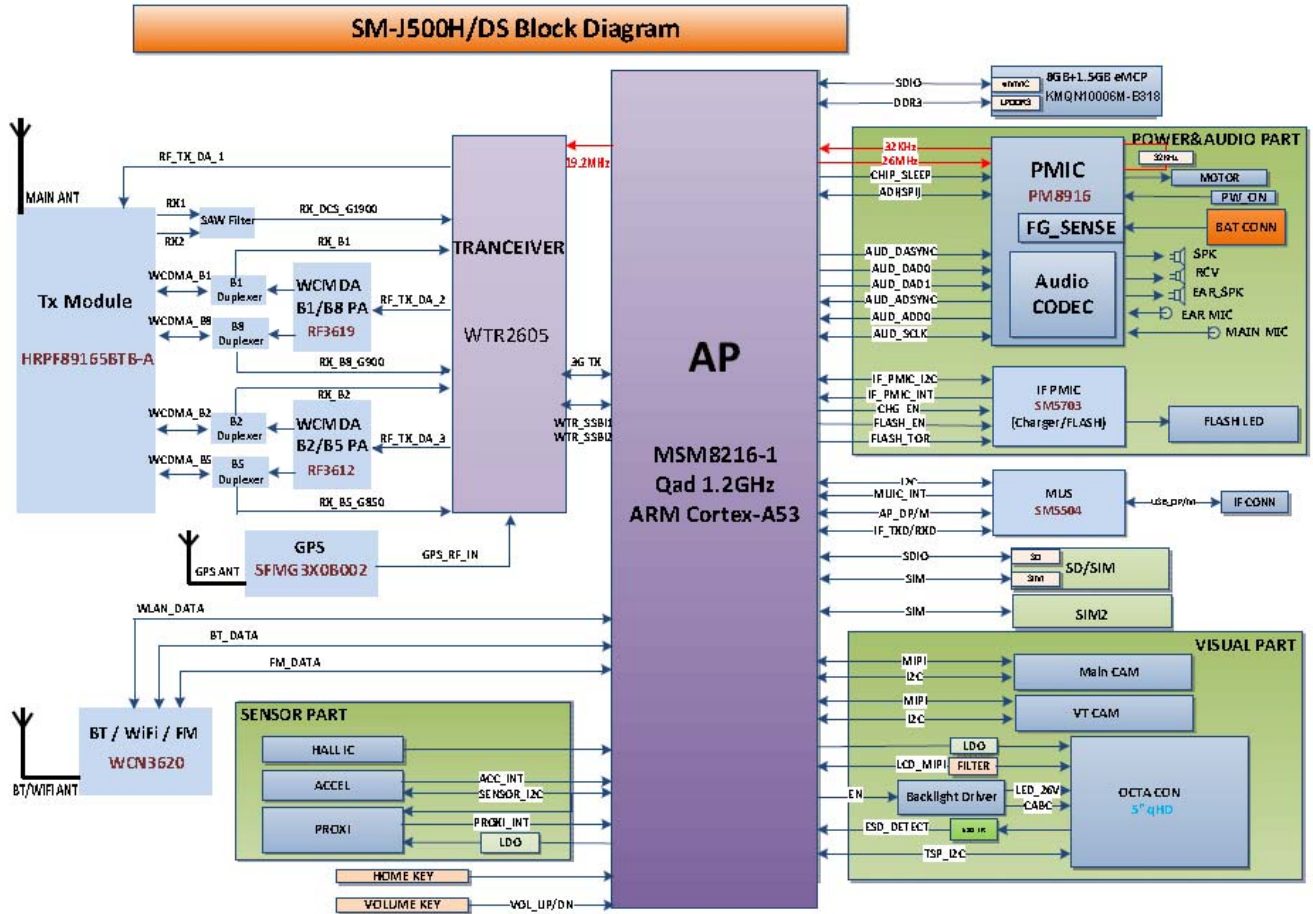


8. Level 3 Repair

8-1. Components Layout

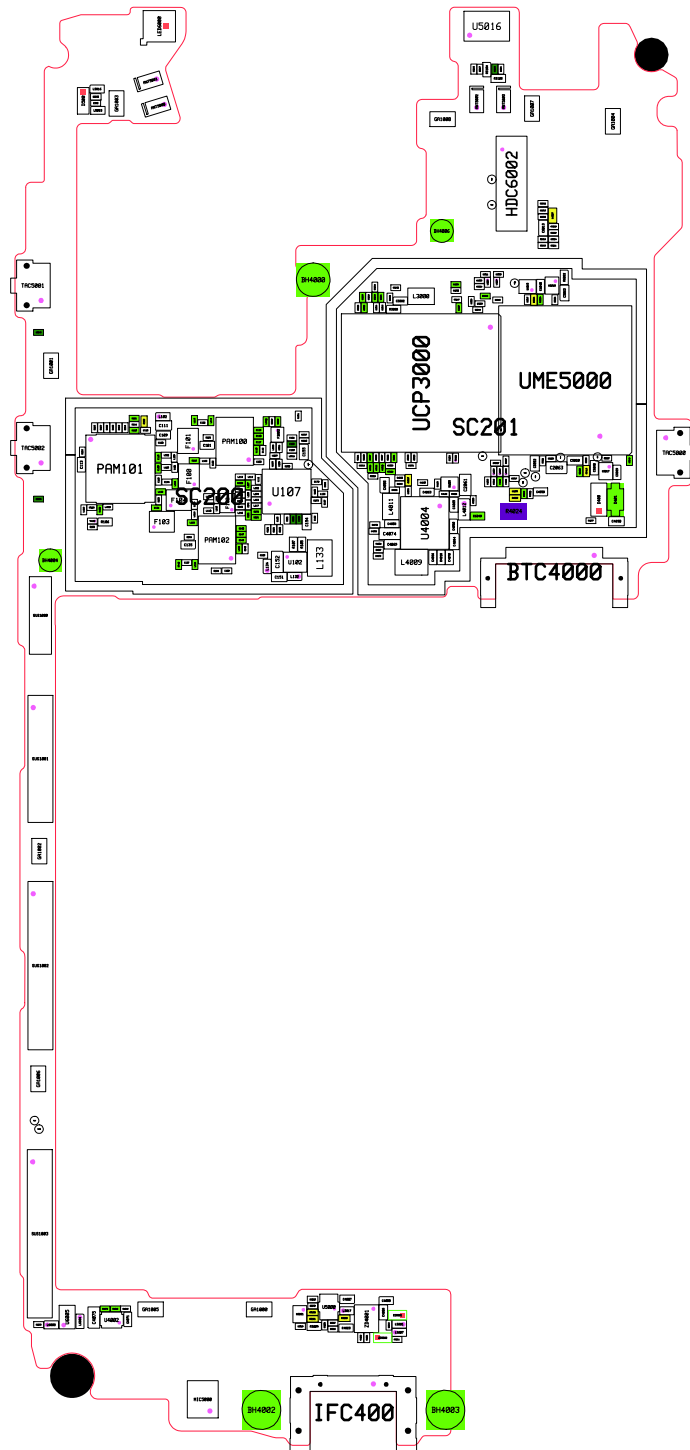


8-2. Block Diagram

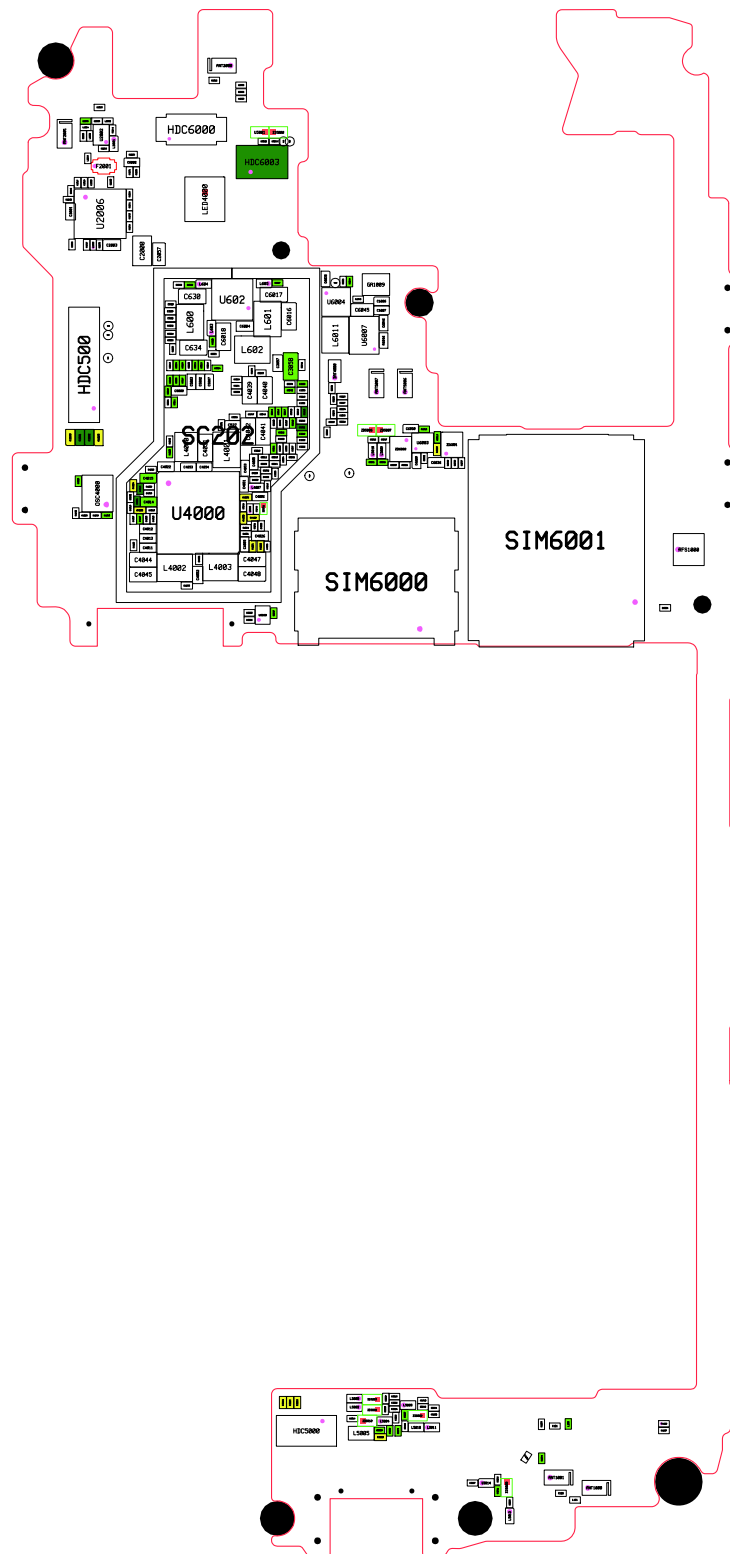


8-3. PCB Diagrams

8-3-1. Top

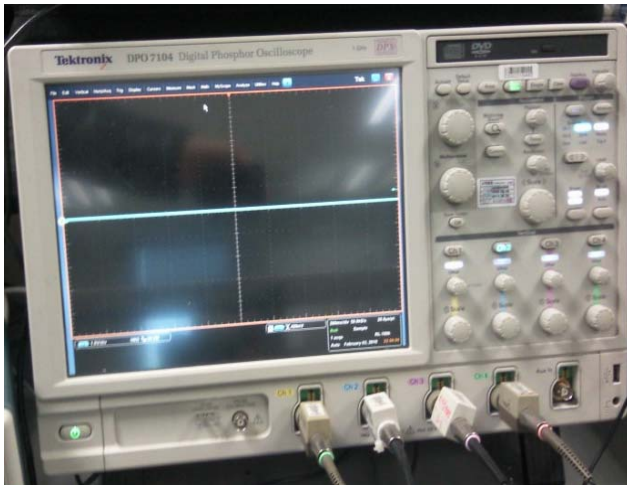


8-3-2. Bottom



8-4. Flow Chart of Troubleshooting

Equipments



↑ Oscilloscope



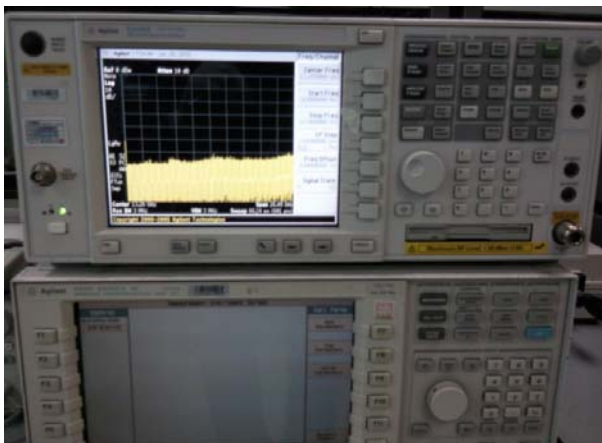
↑ Digital Multimeter



↑ Power Supply



↑ + driver, ESD Safe Tweezer

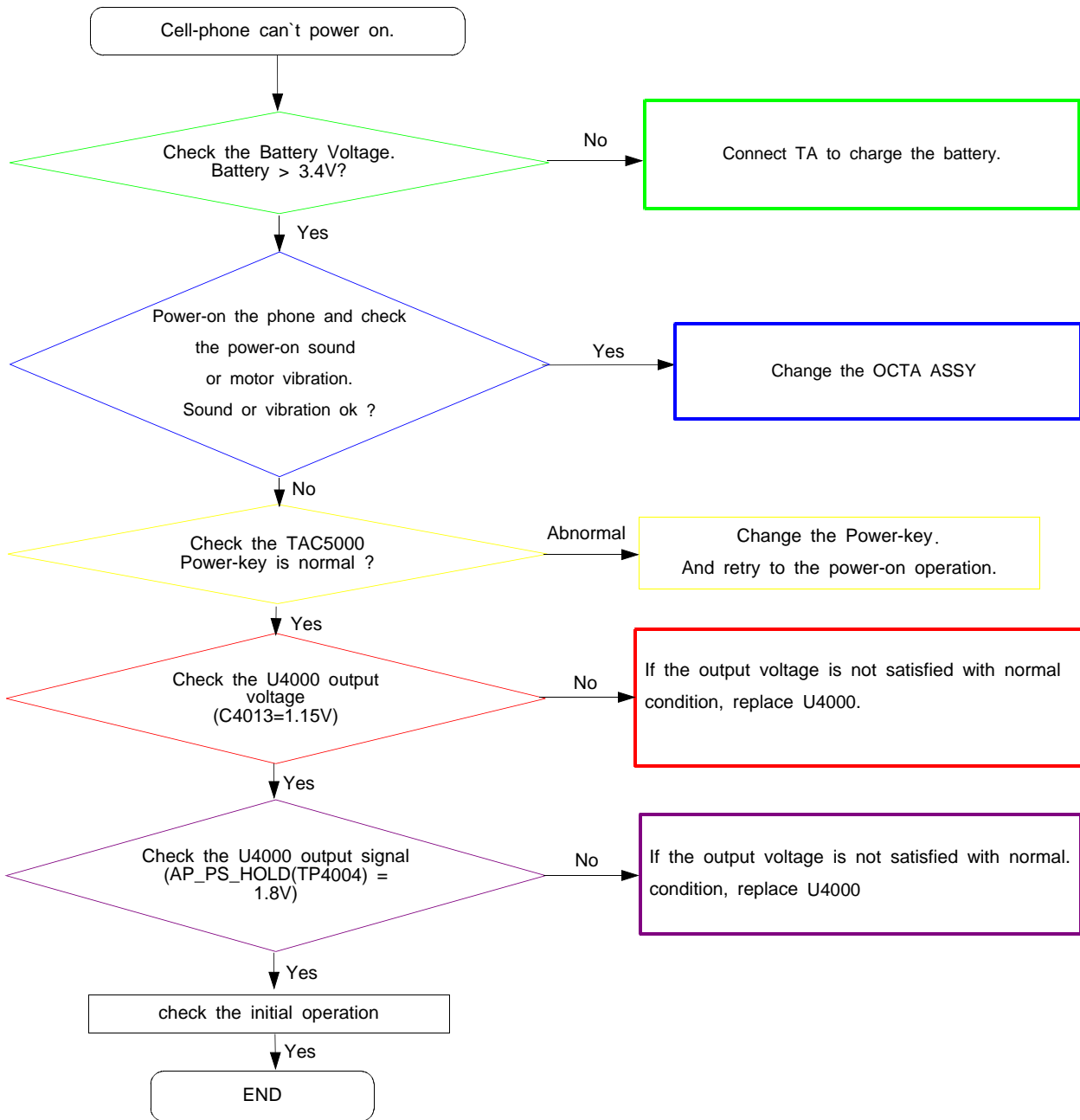


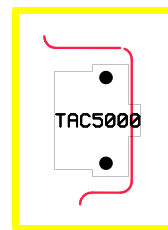
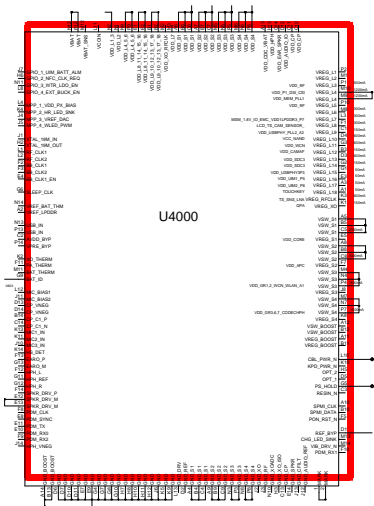
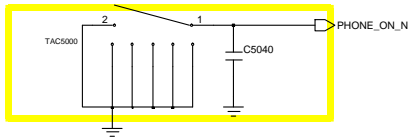
↑ 8960 & Spectrum Analyzer



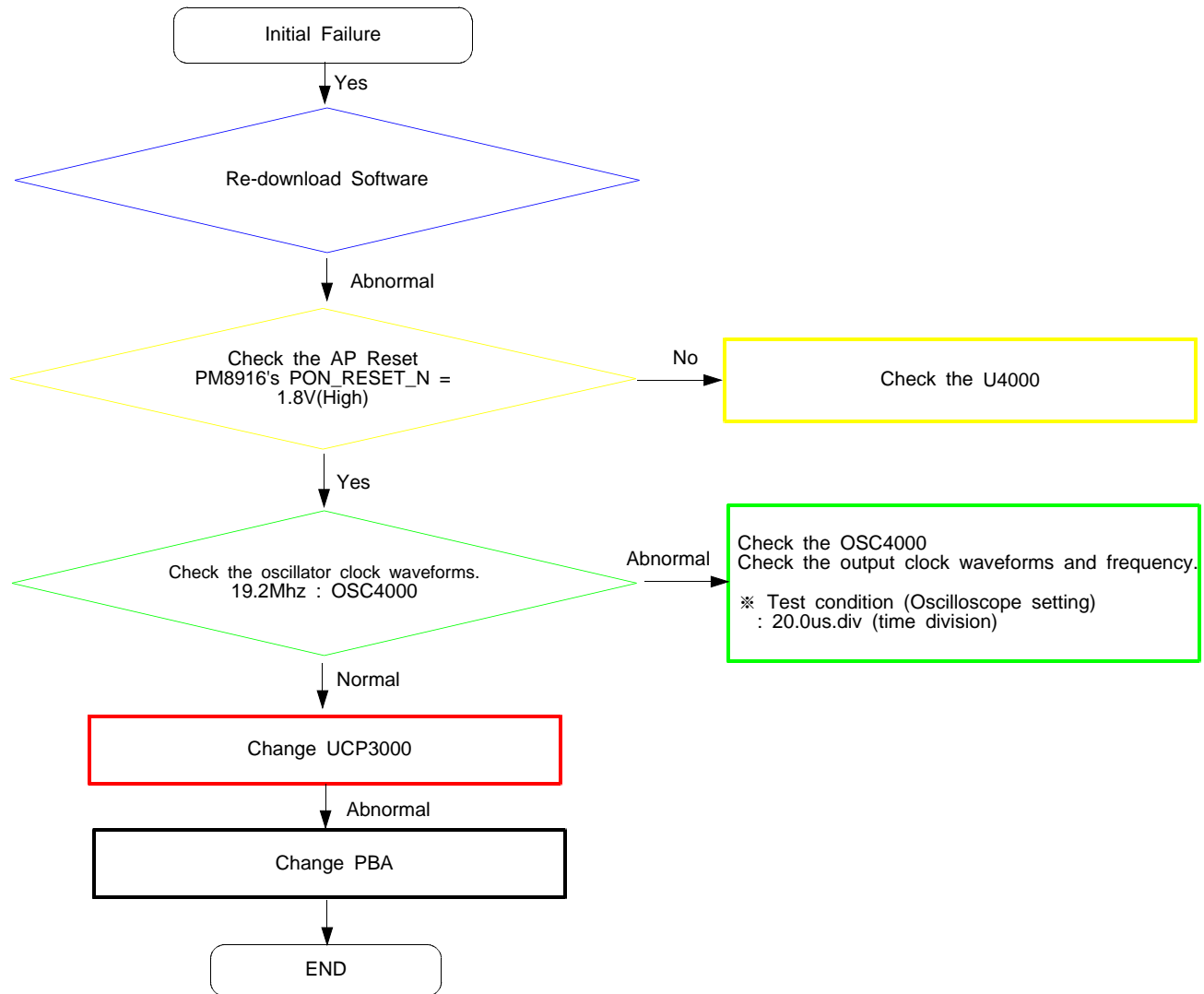
↑ Soldering iron

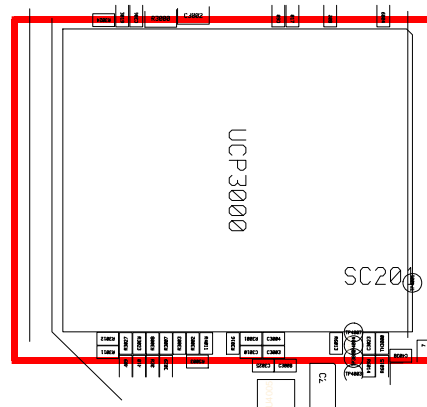
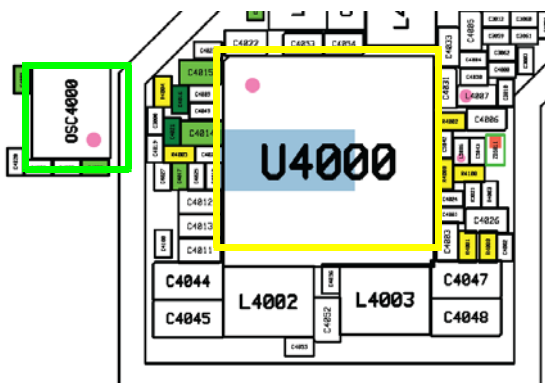
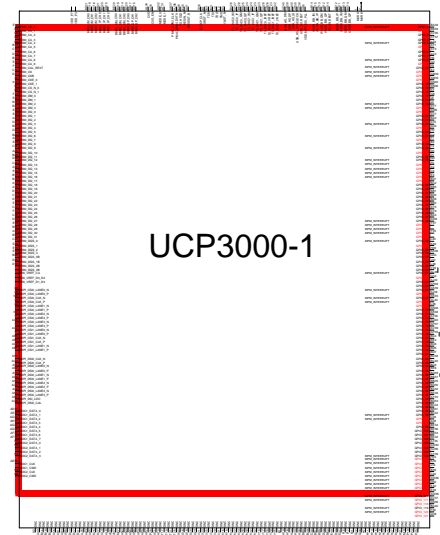
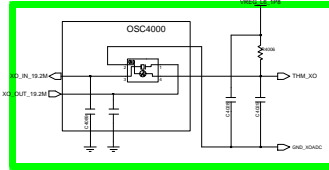
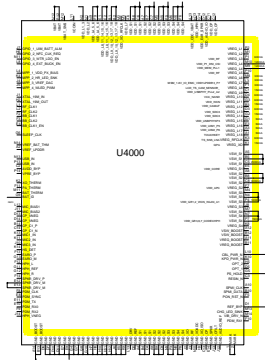
8-4-1. Power On



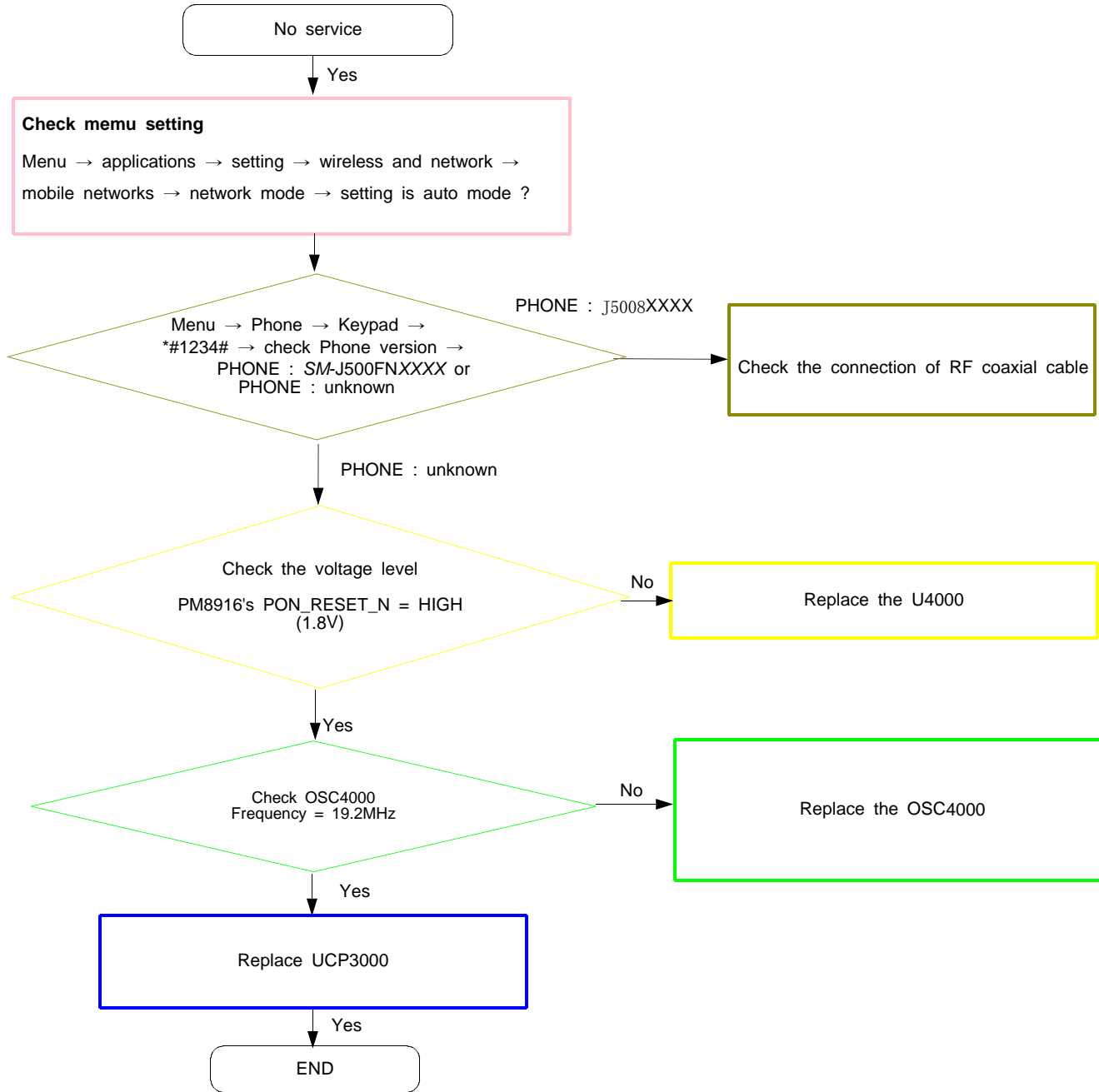


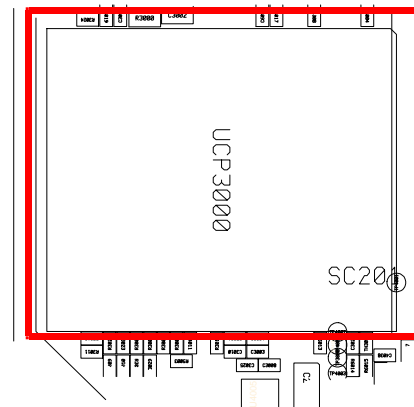
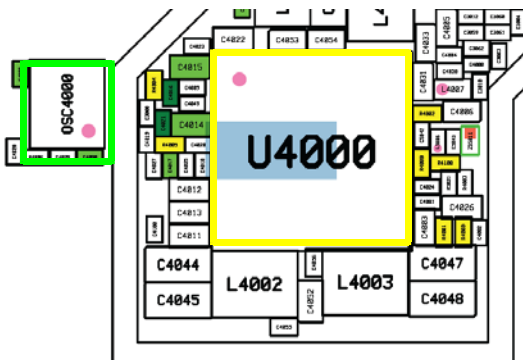
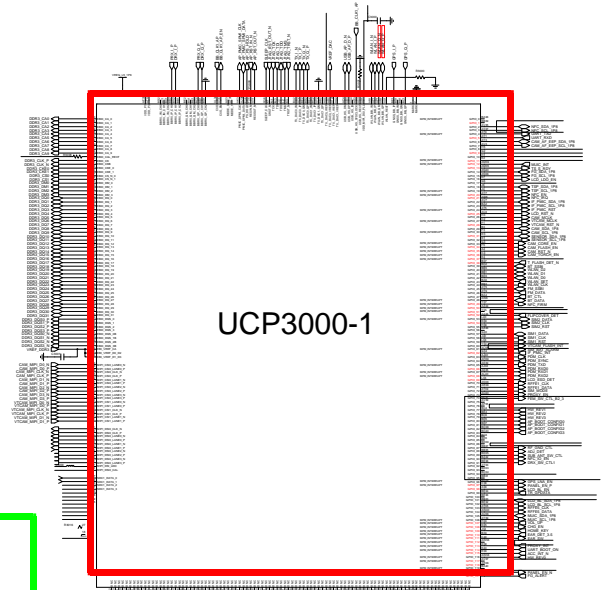
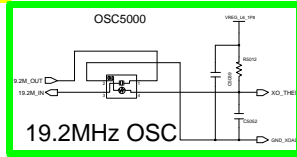
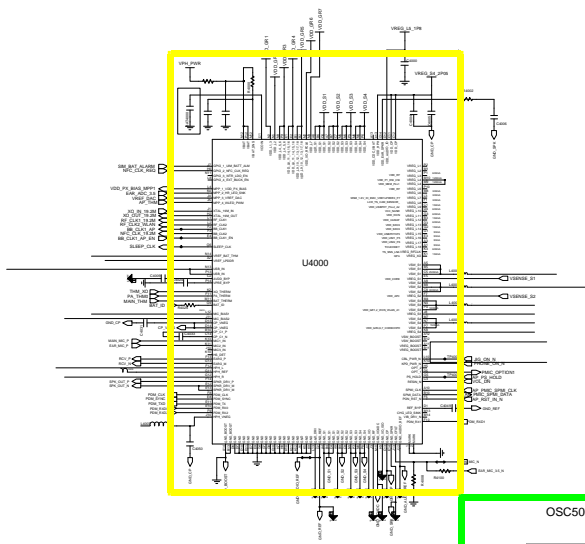
8-4-2. Initial



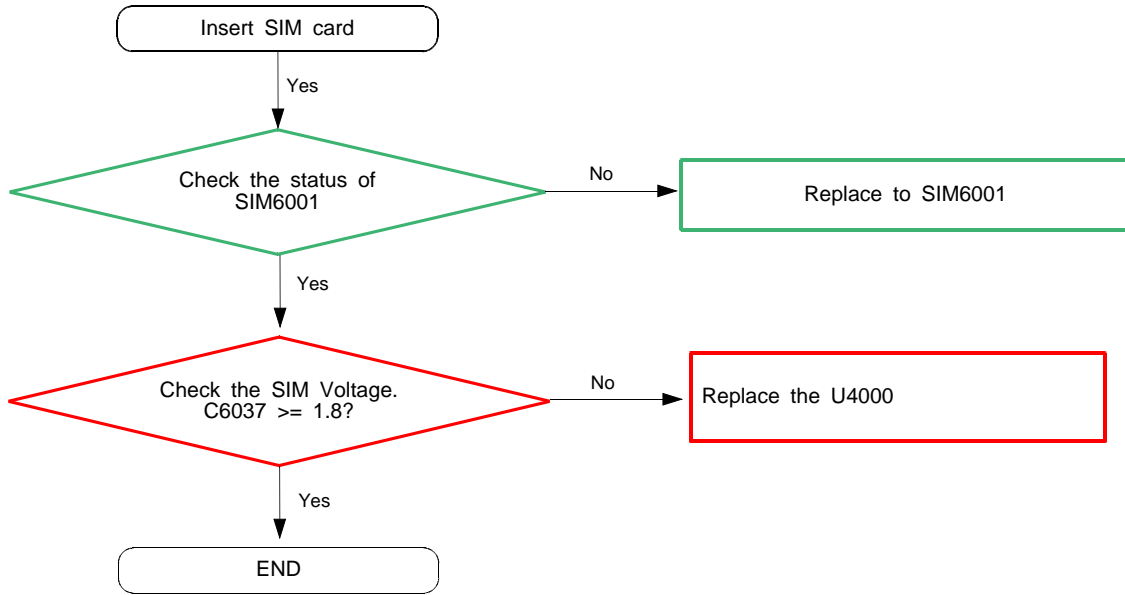


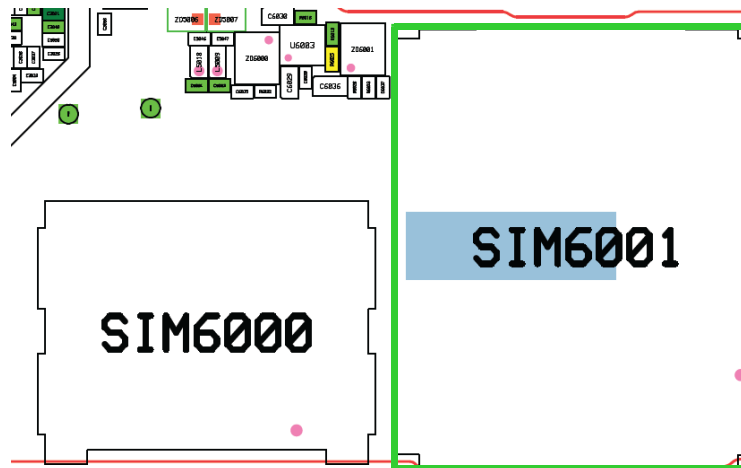
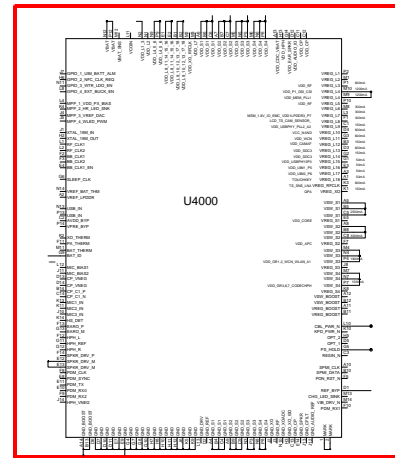
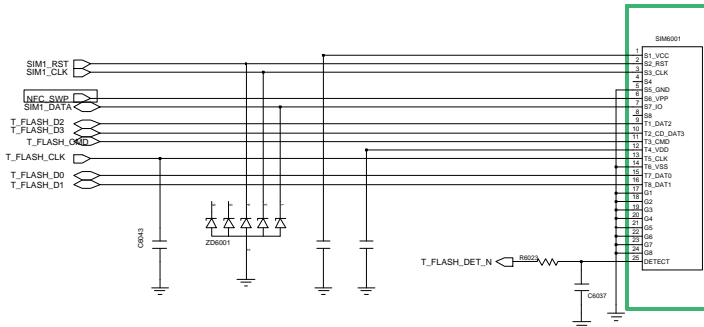
8-4-3. No Service



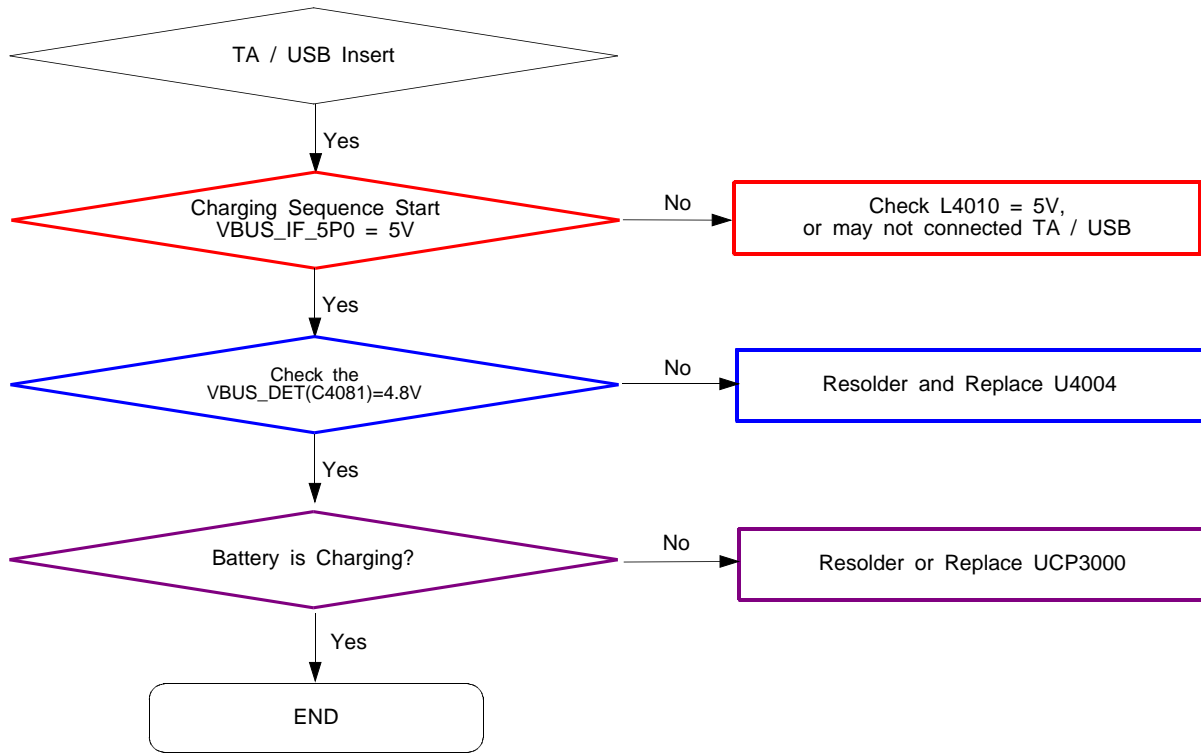


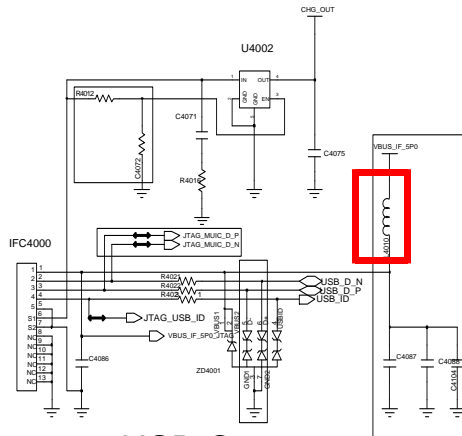
8-4-4. Sim Part - Sim Card



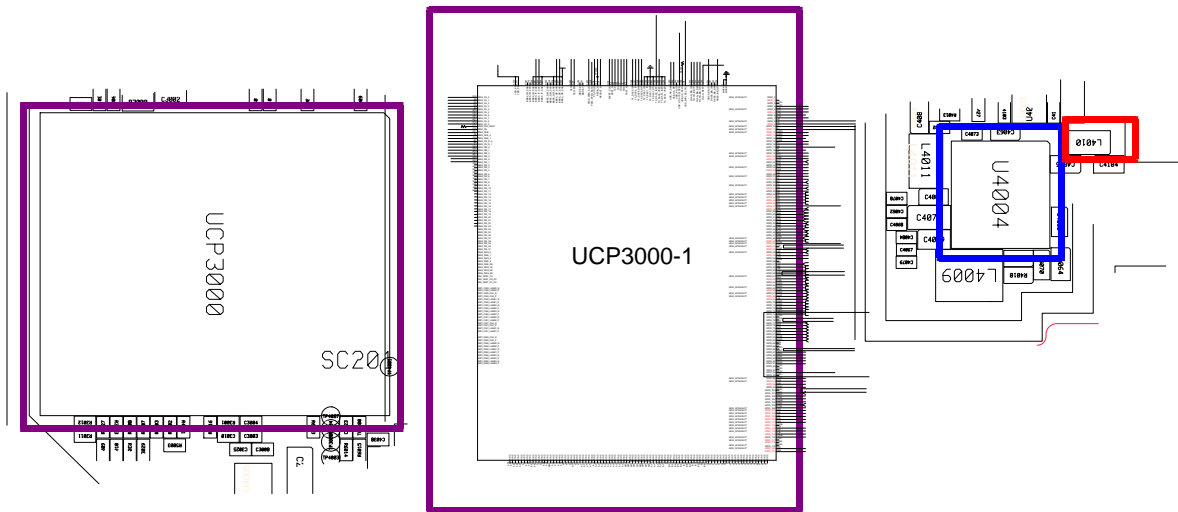
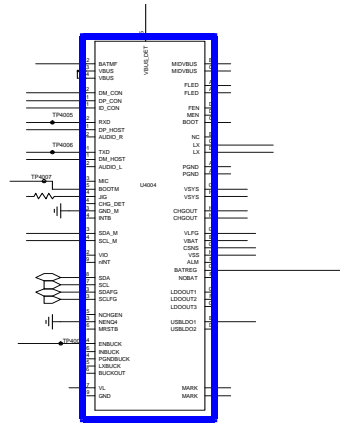


8-4-5. Charging Part

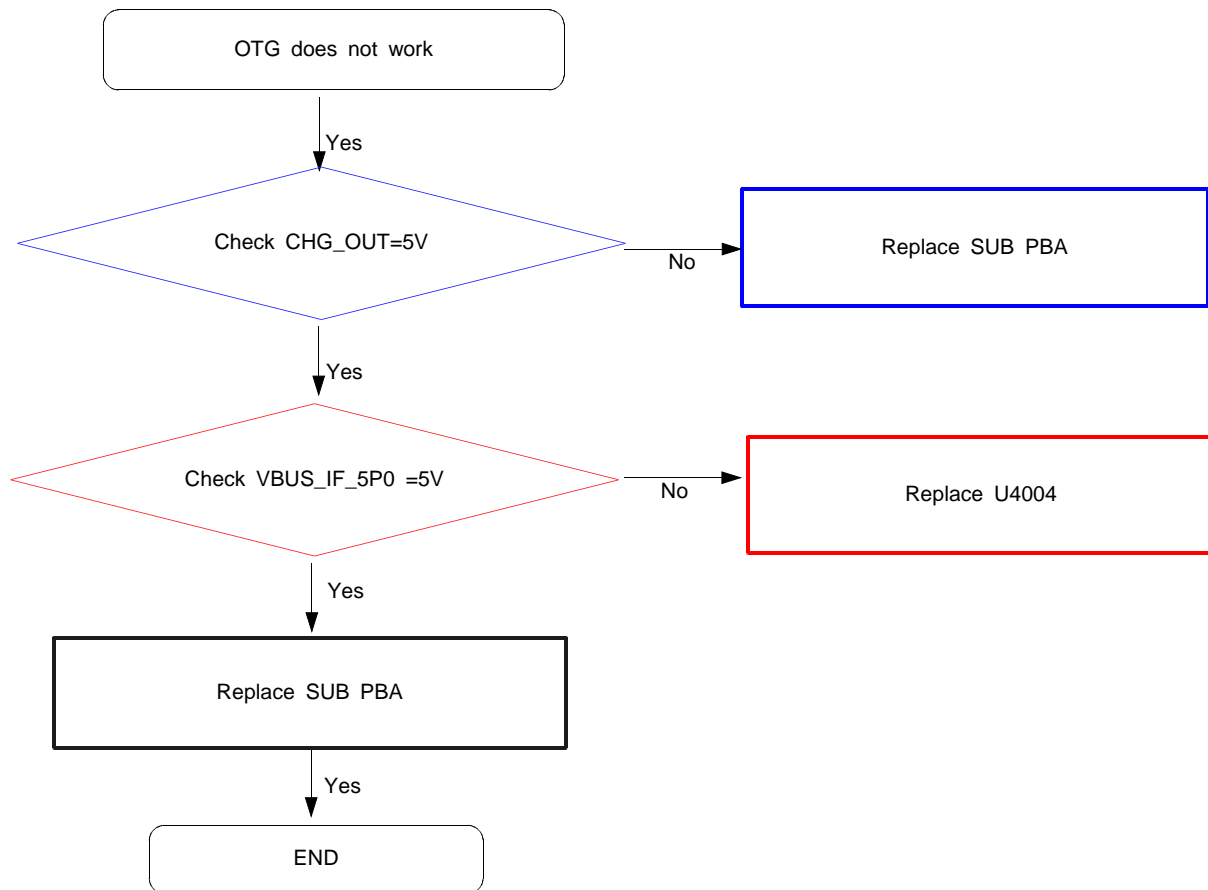


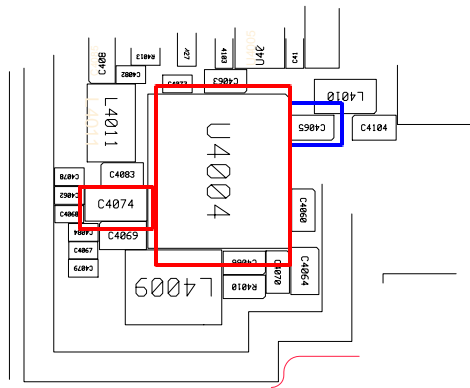
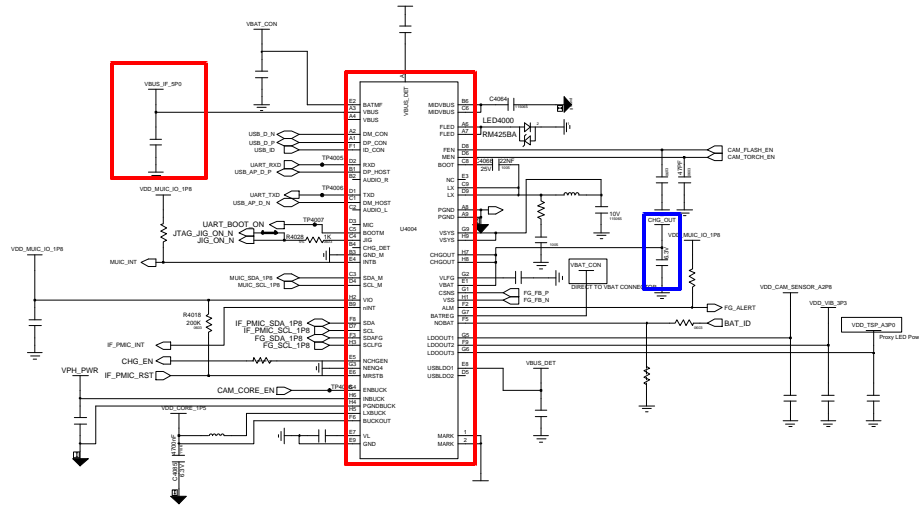


USB Connector

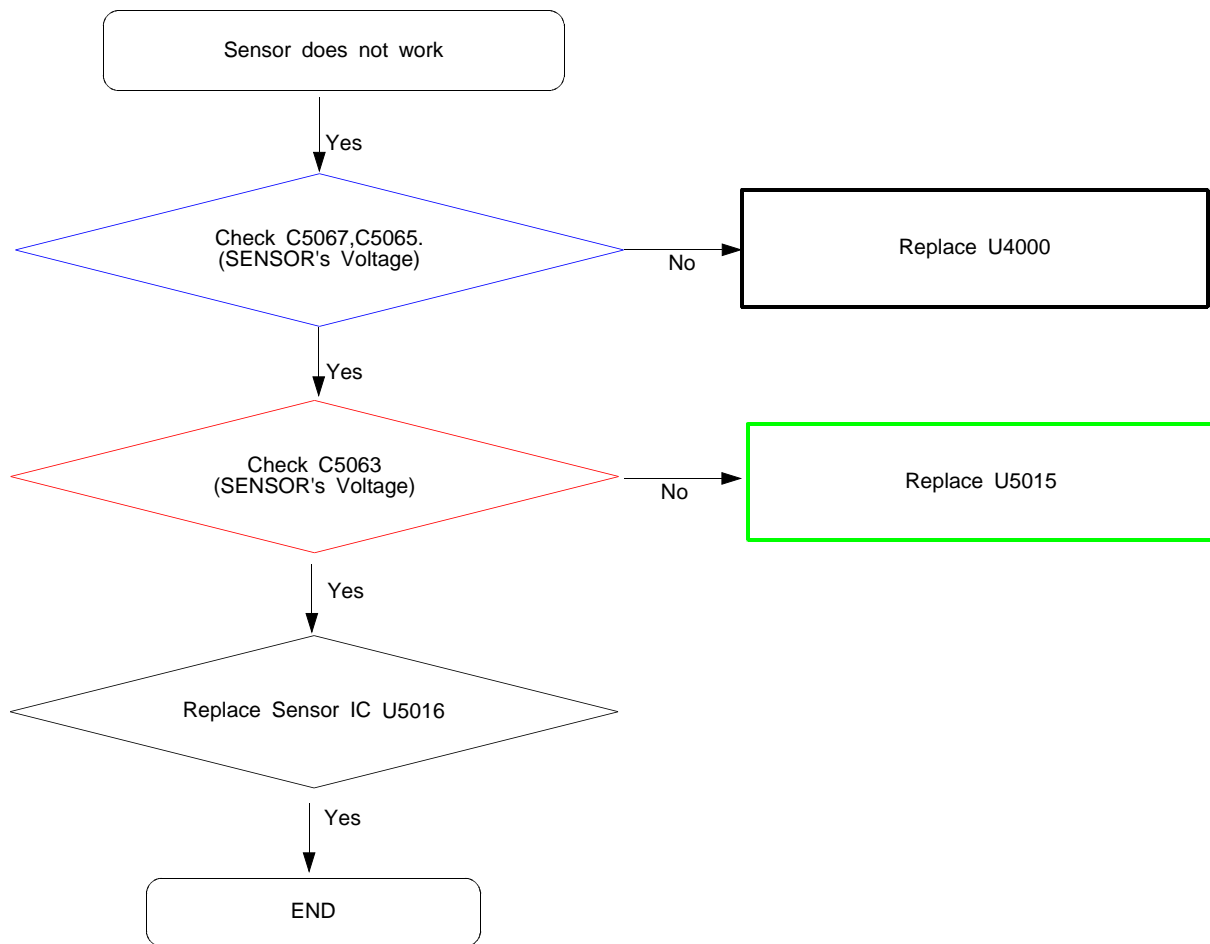


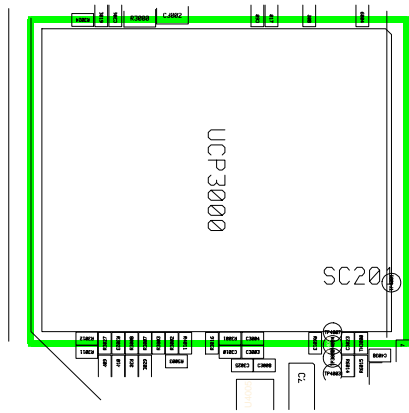
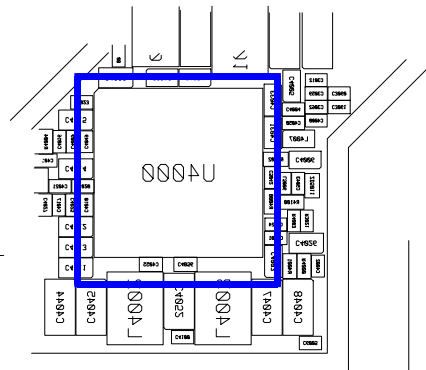
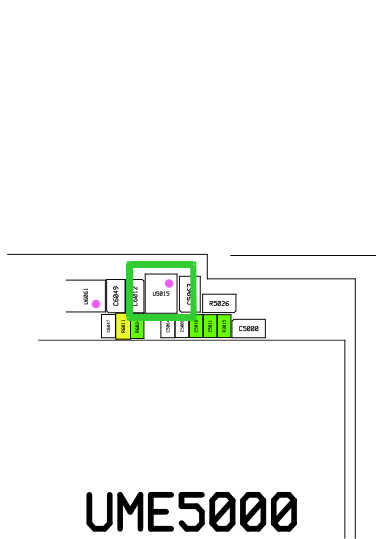
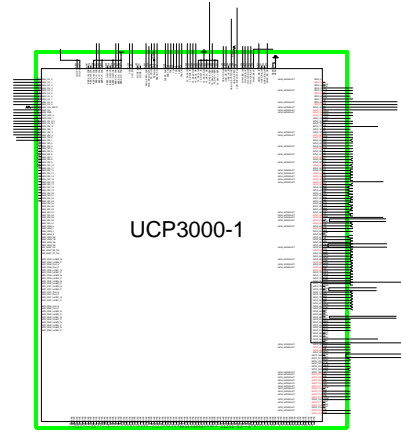
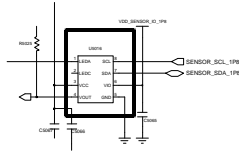
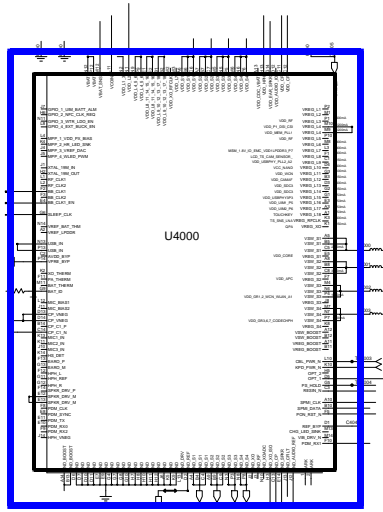
8-4-6. OTG



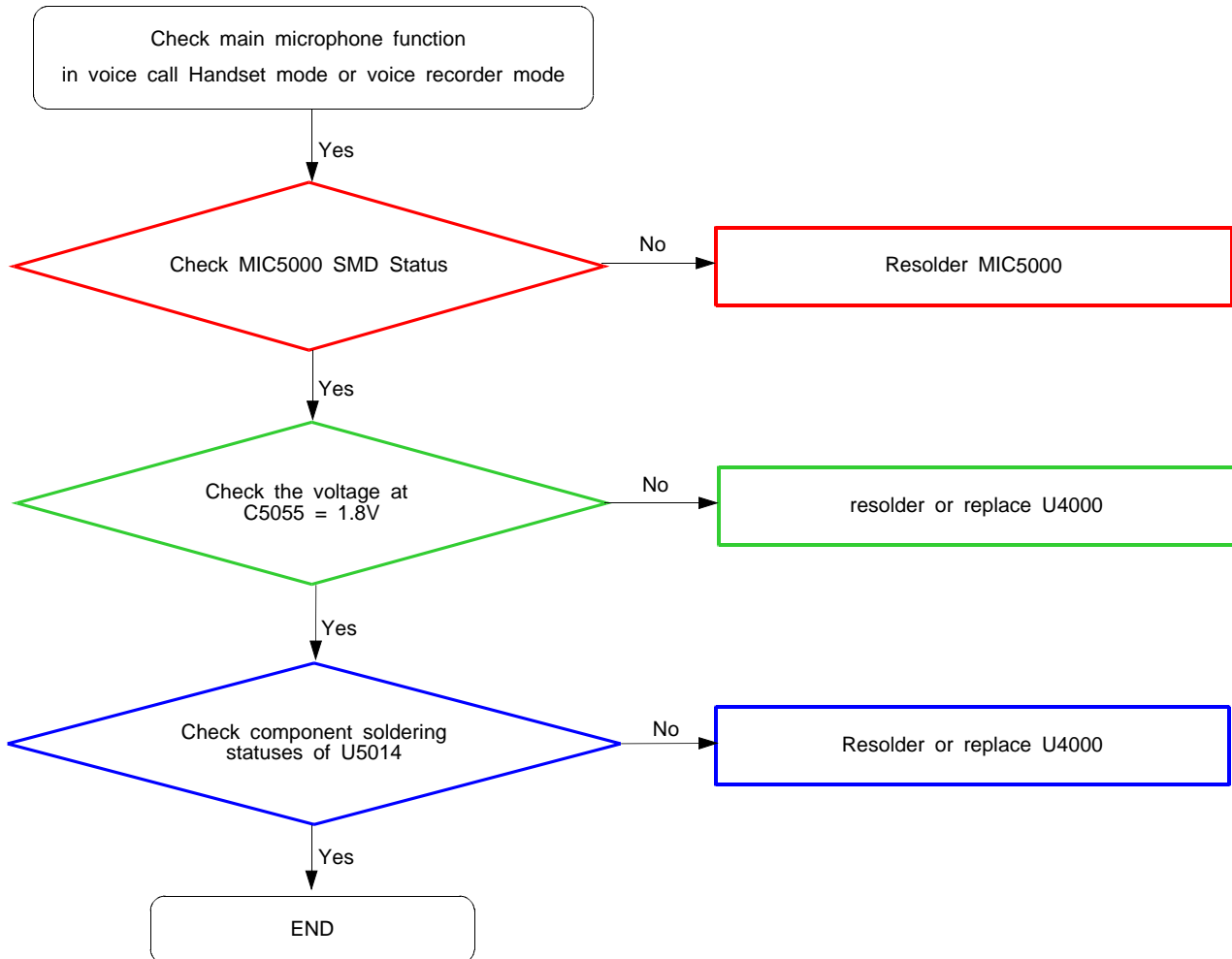


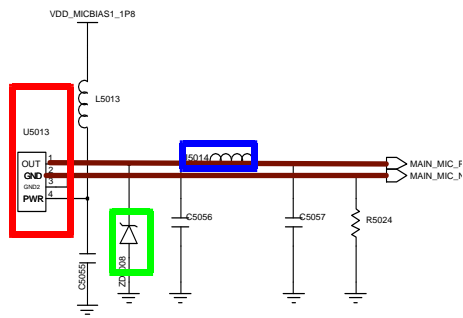
8-4-7. Proxy Sensor



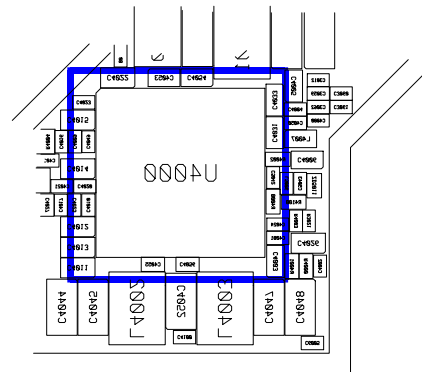
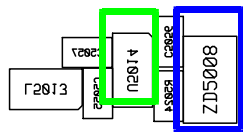
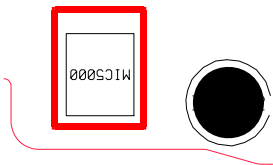
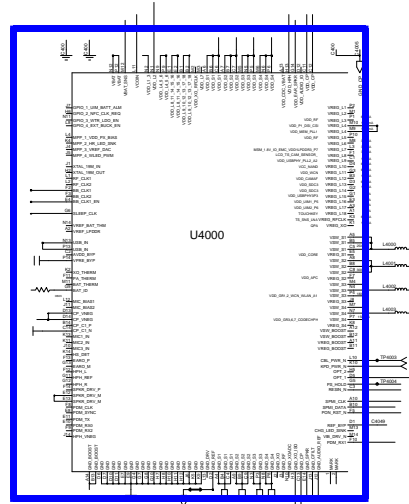


8-4-8 Microphone Part - Main MIC

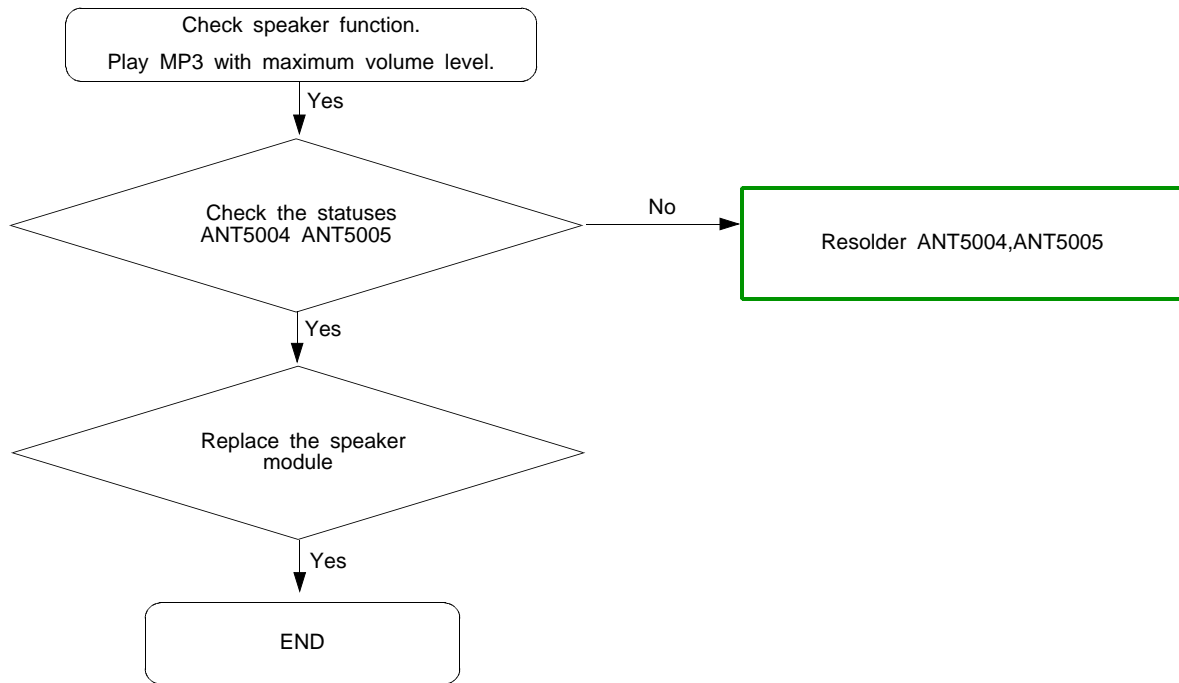


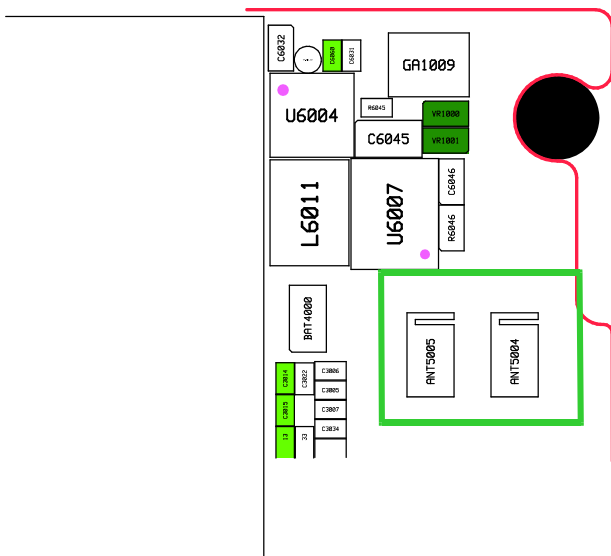
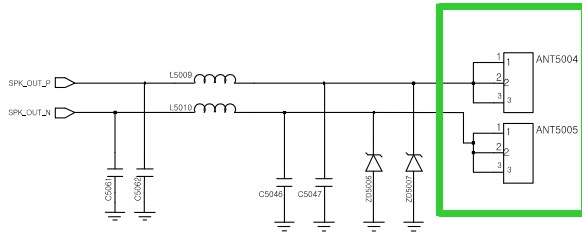


Main MIC

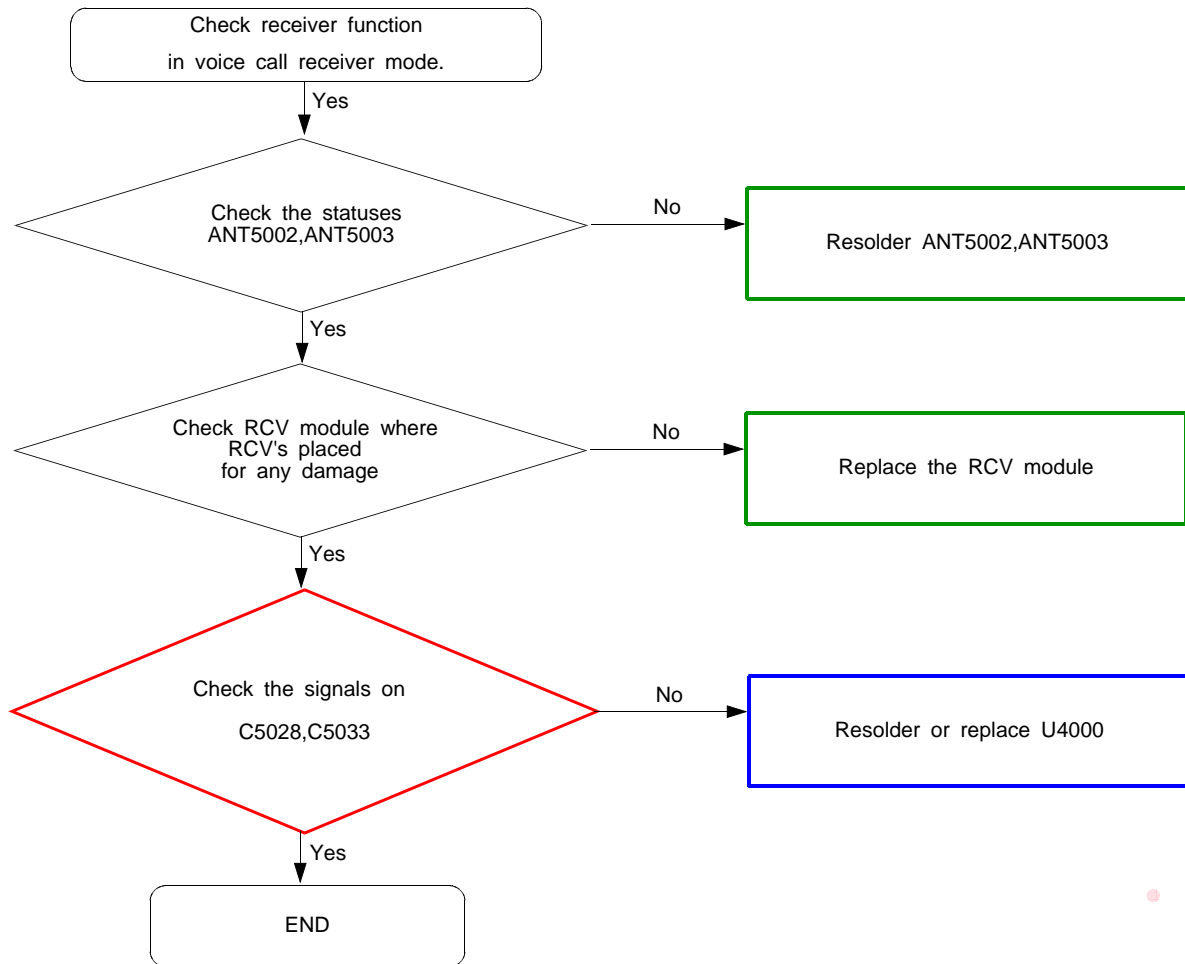


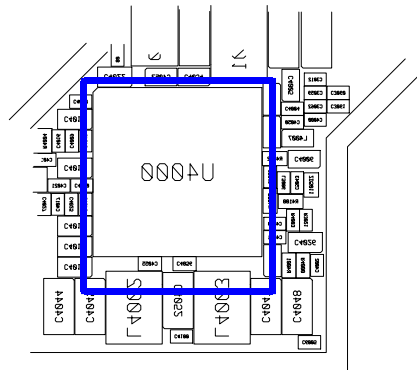
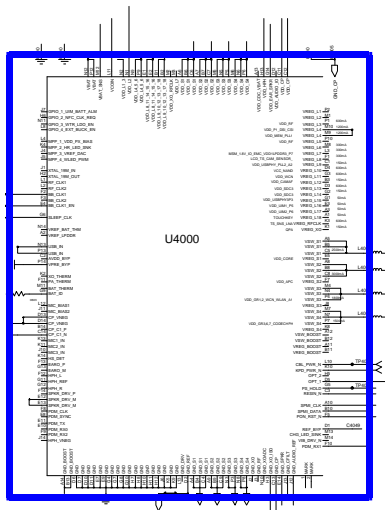
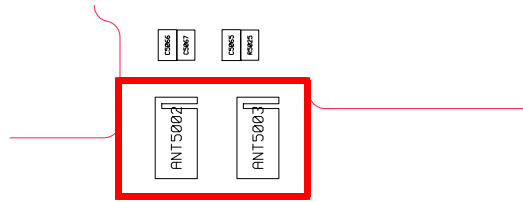
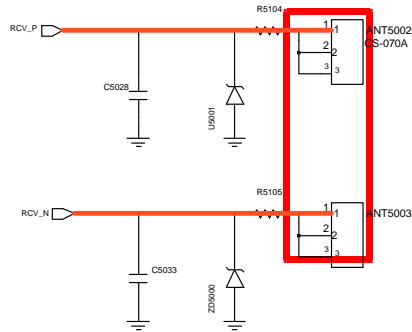
8-4-9. Speaker Part



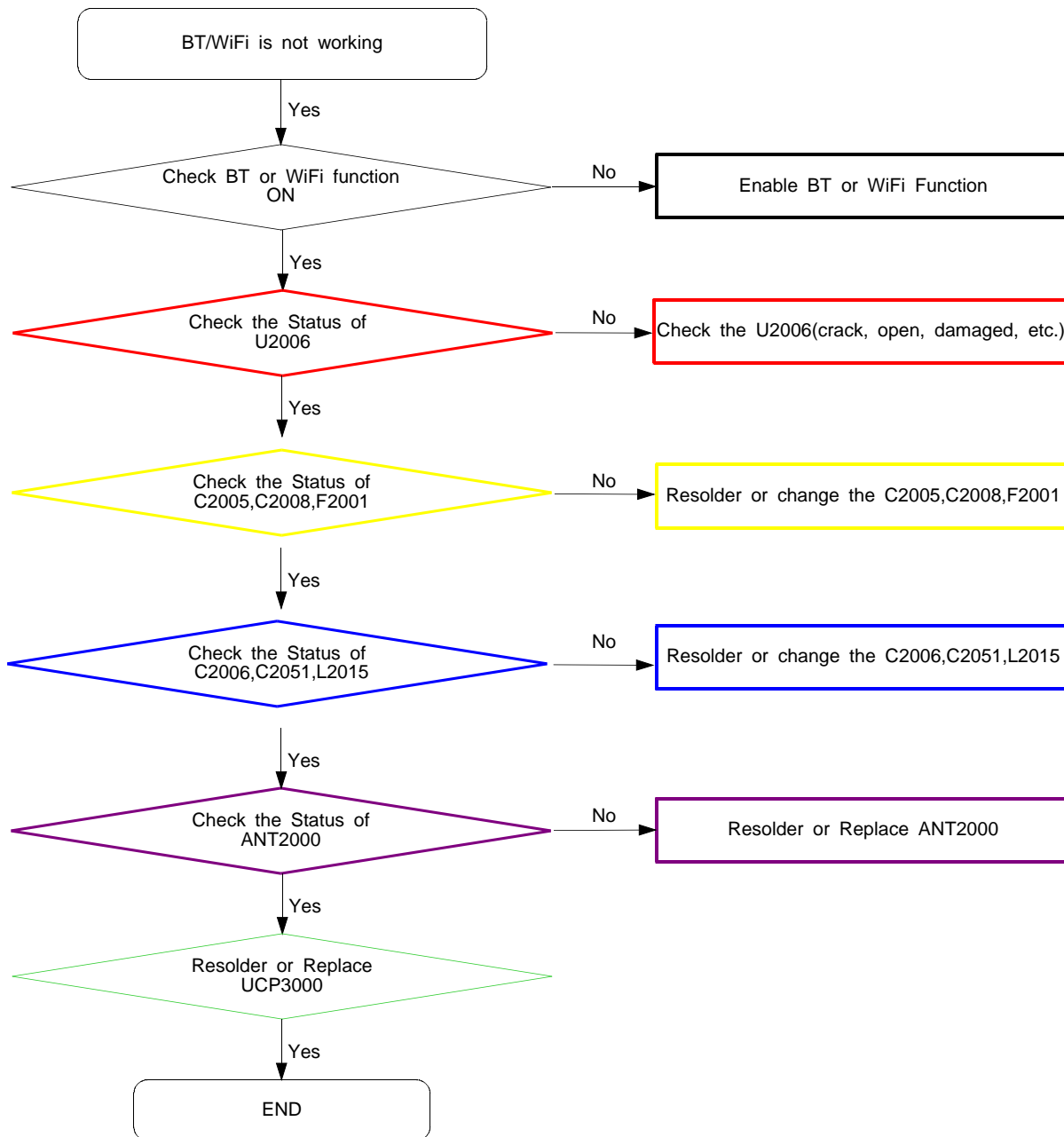


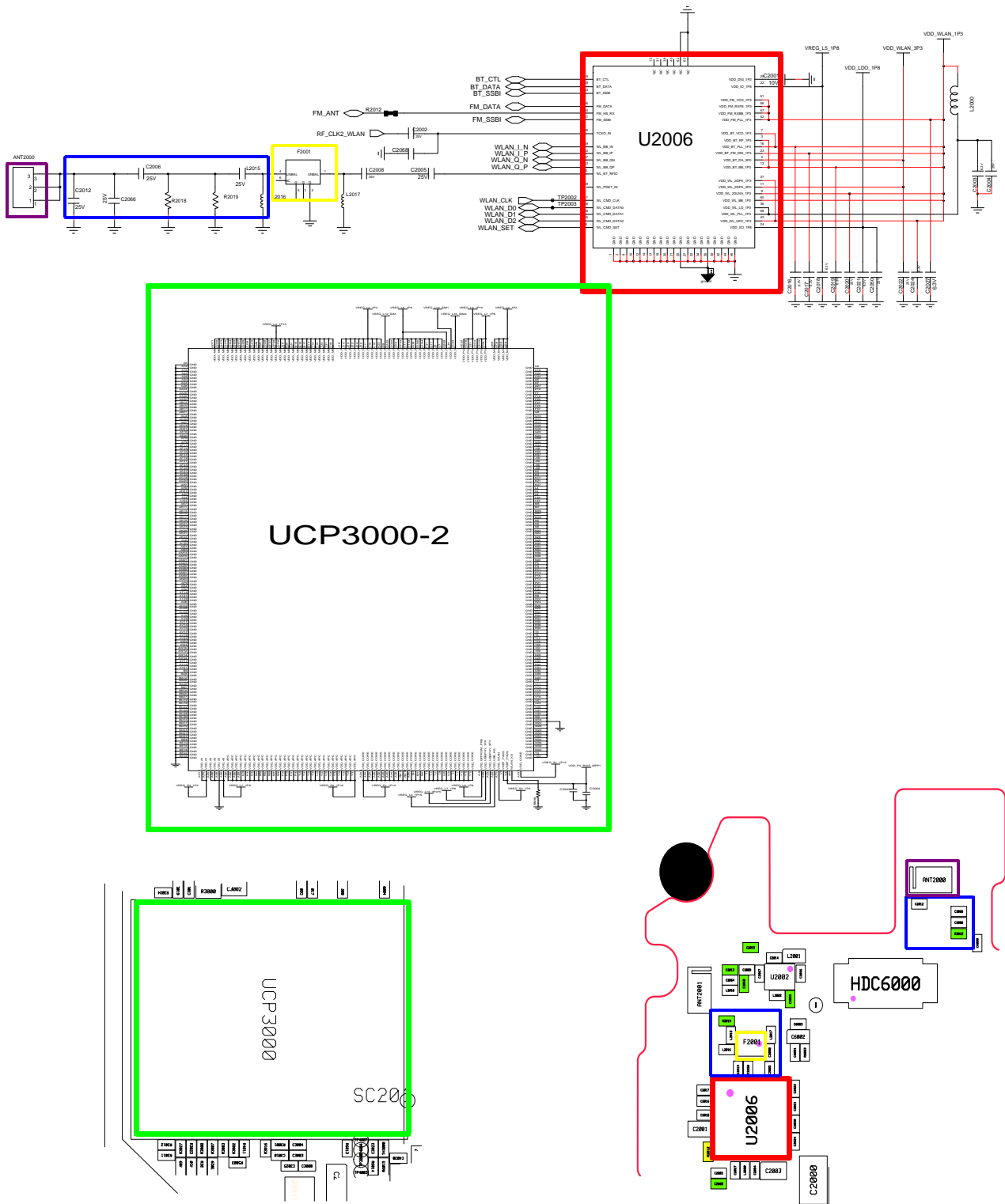
8-4-10. Receiver Part



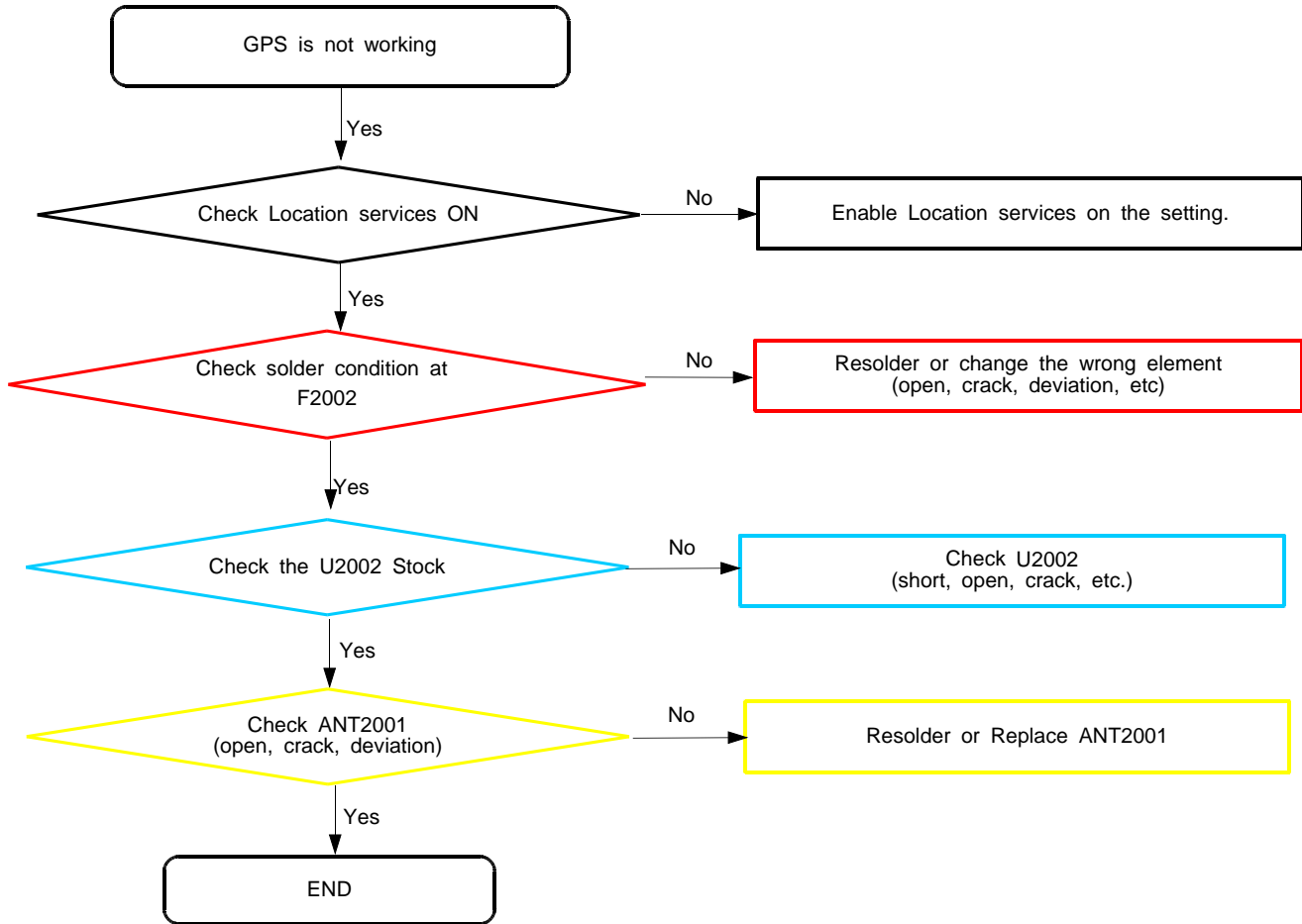


8-4-11. BT/WIFI

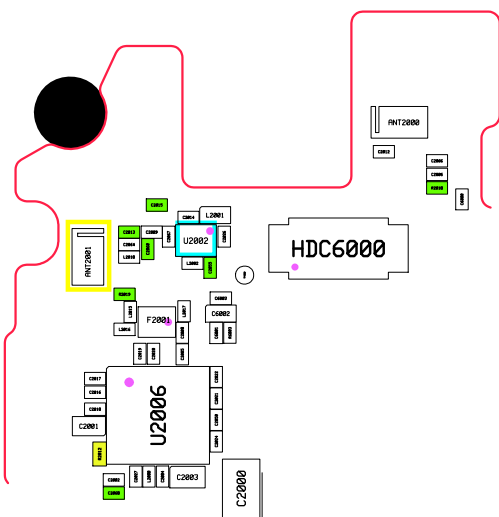
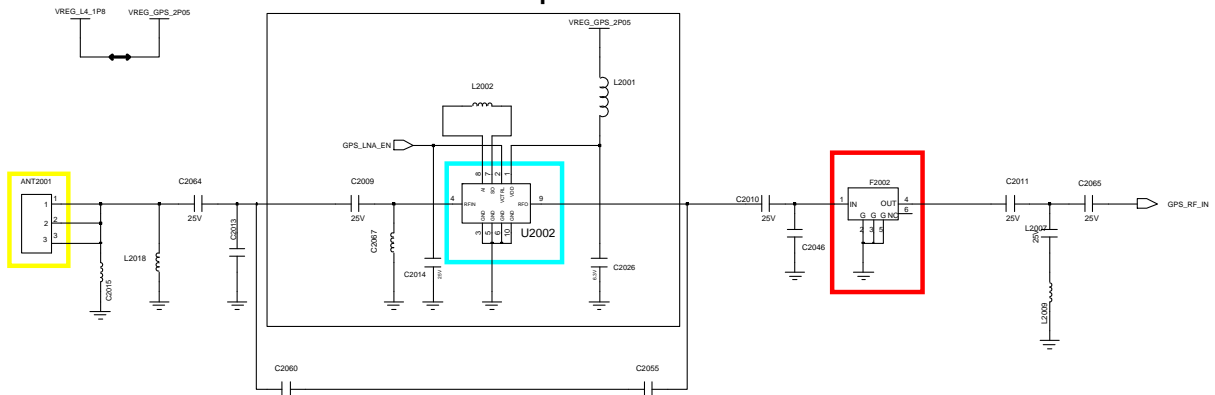




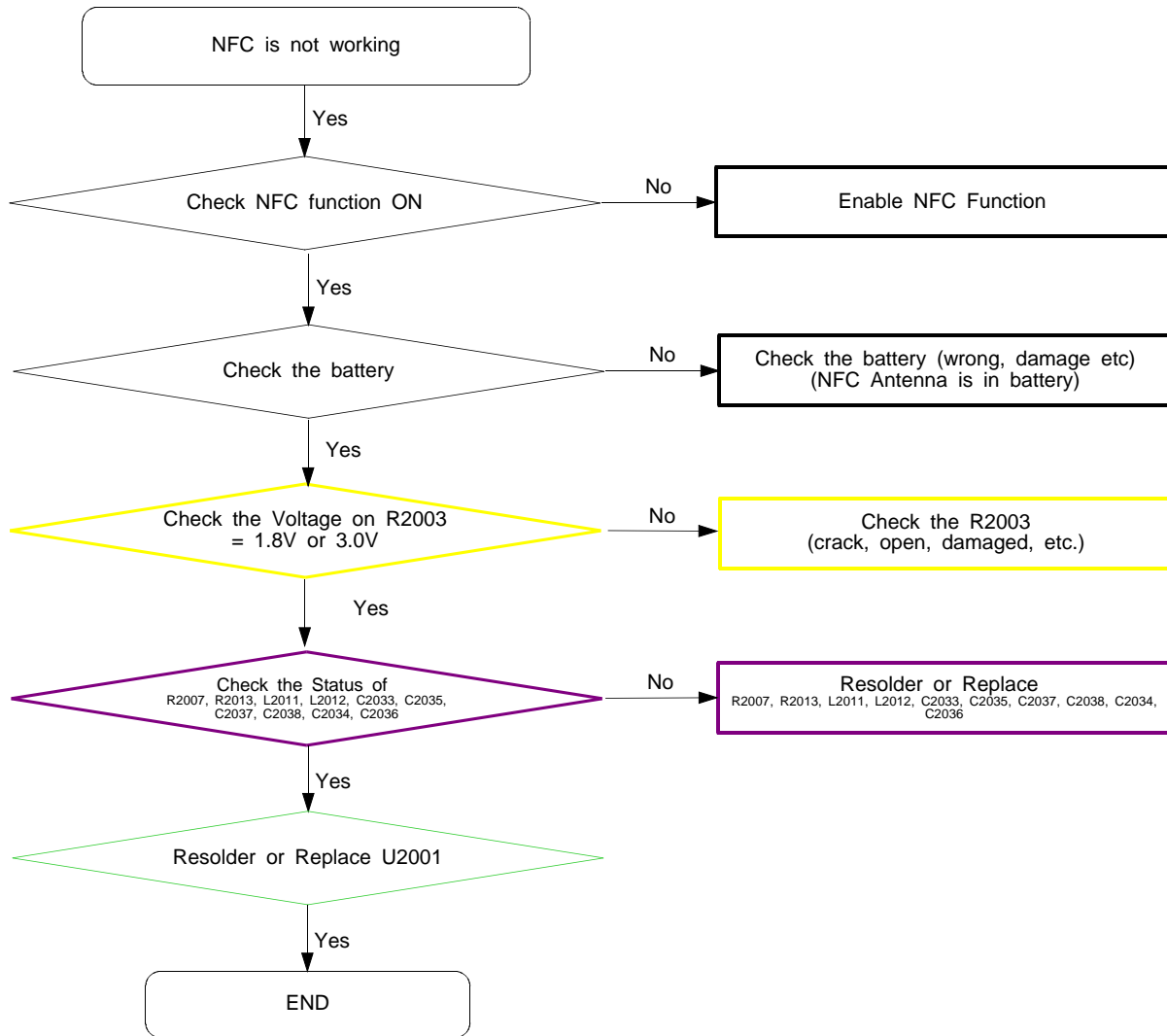
8-4-12. GPS

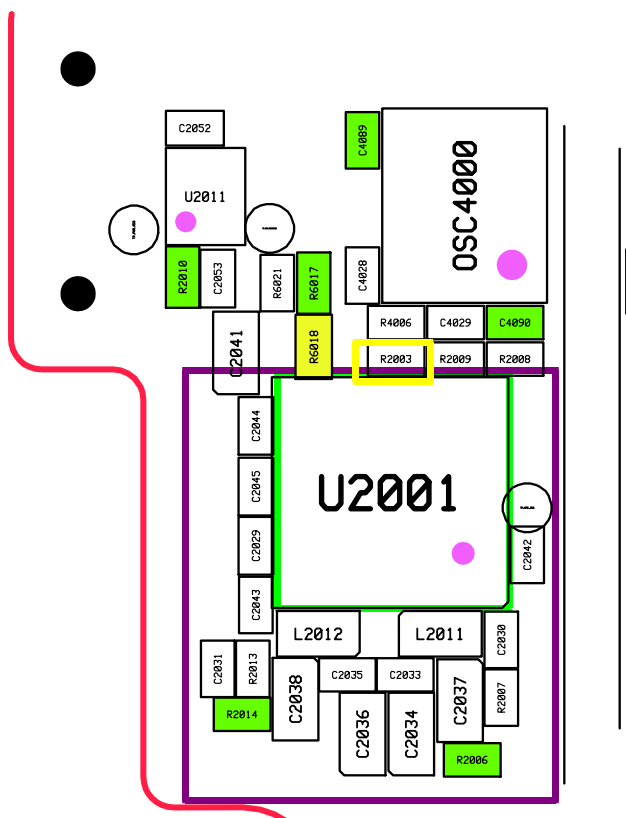
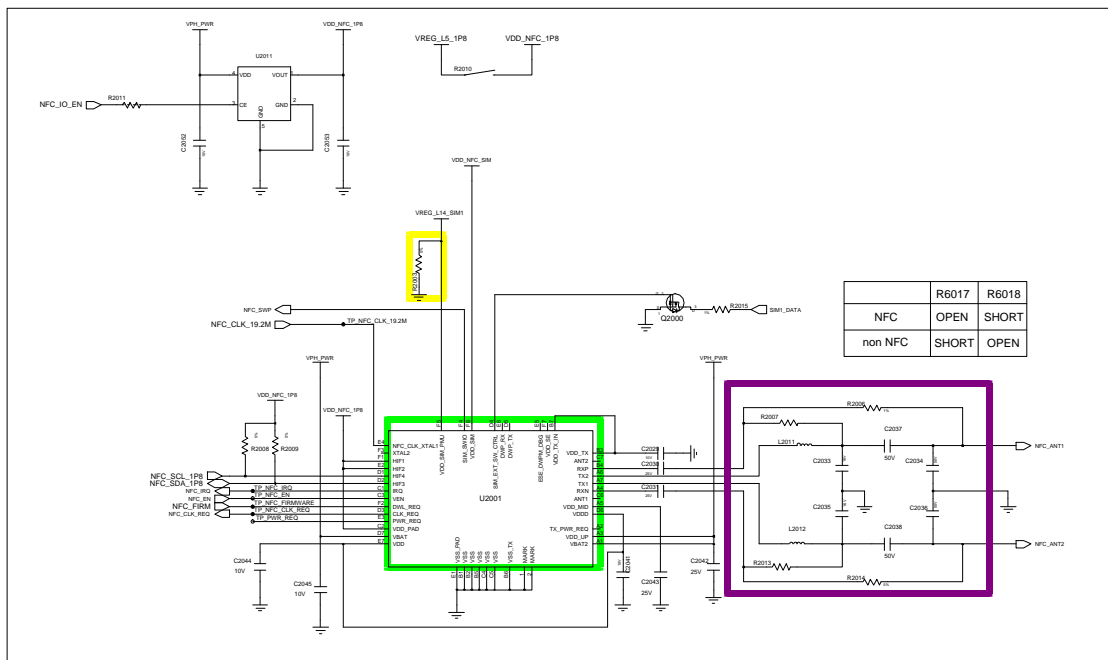


GPS LNA Option

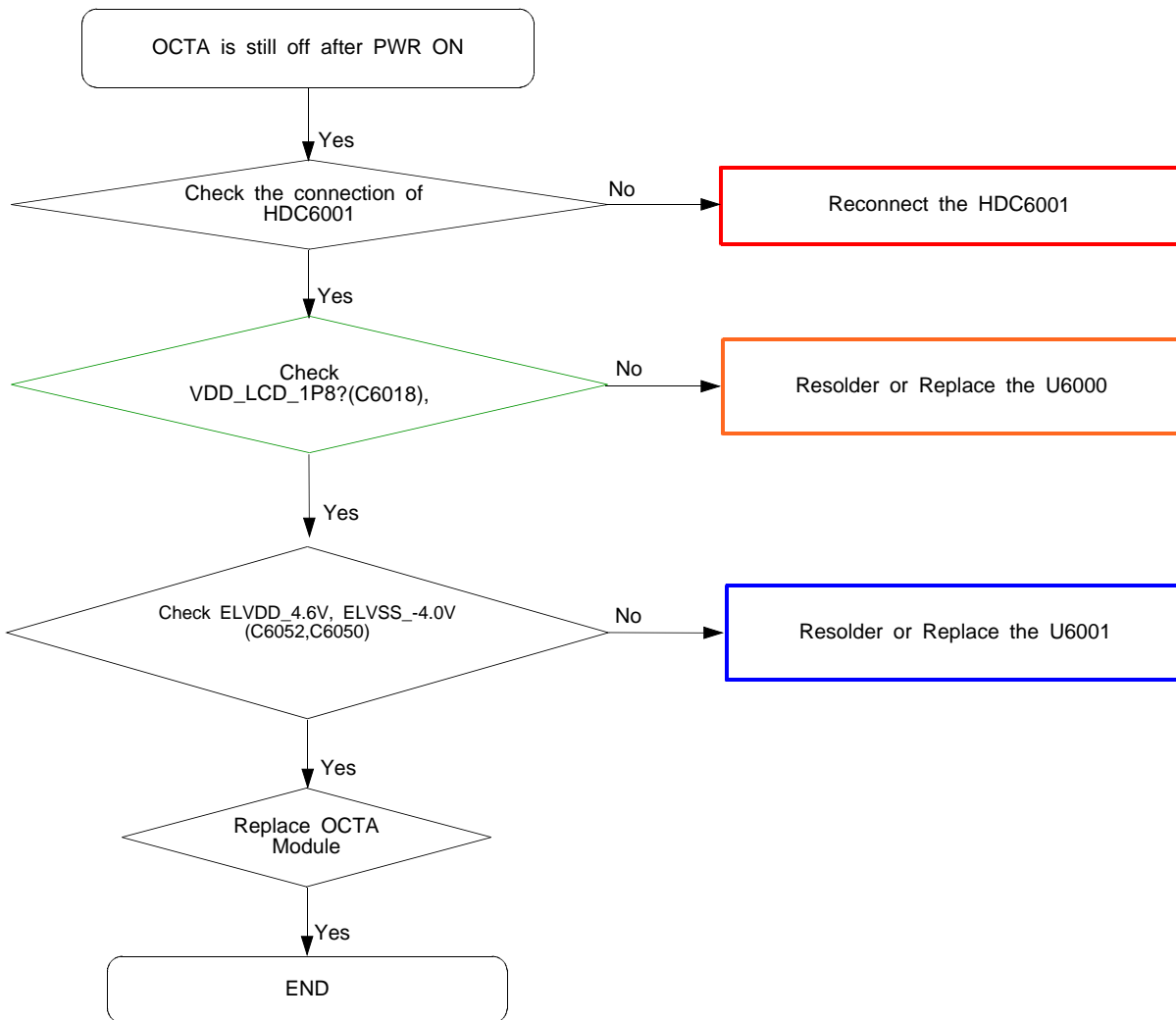


8-4-13. NFC

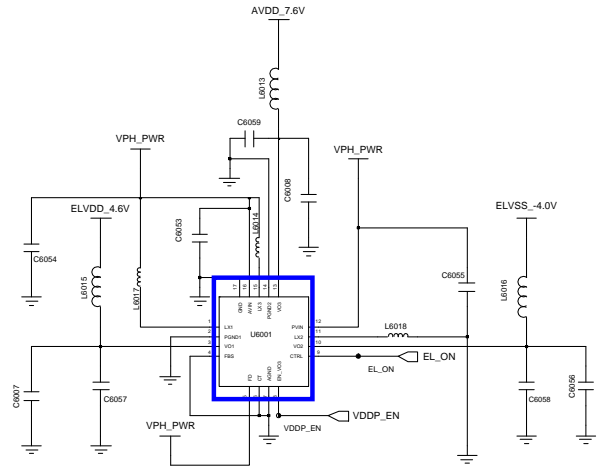
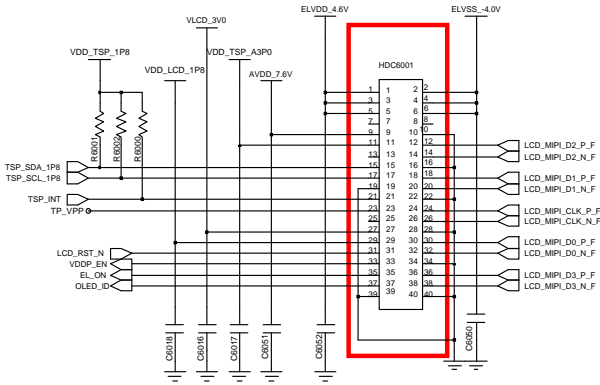




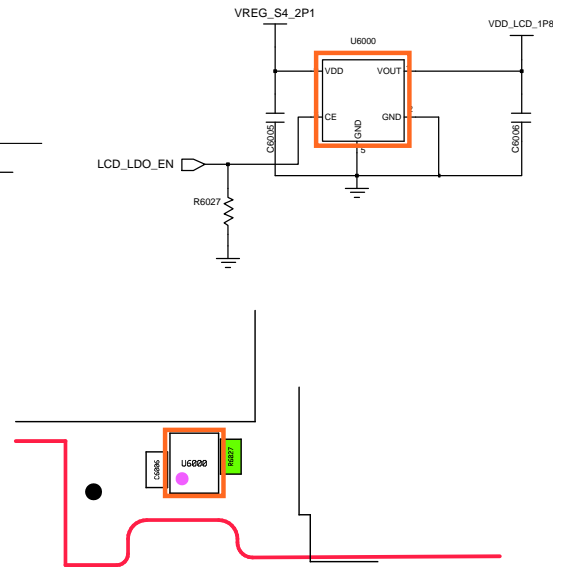
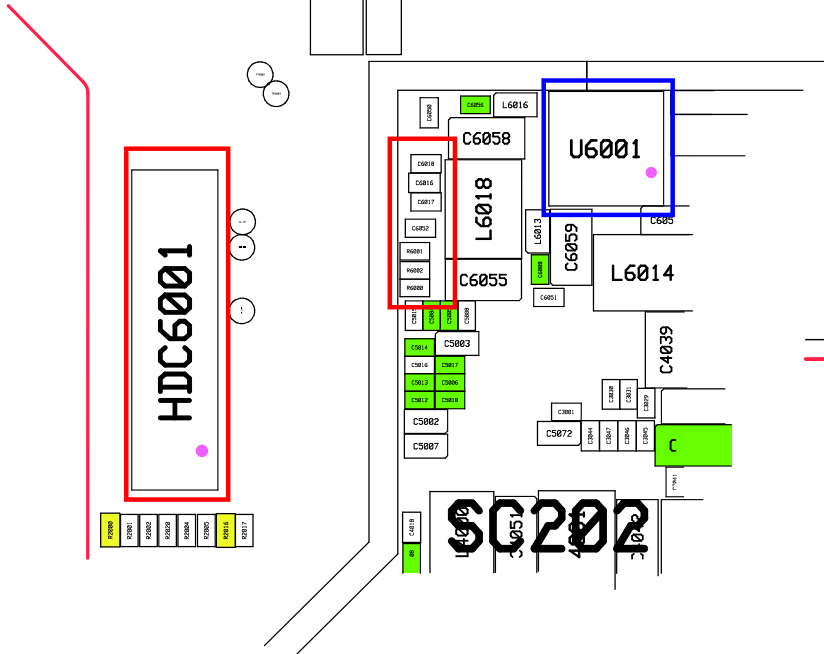
8-4-14. OCTA



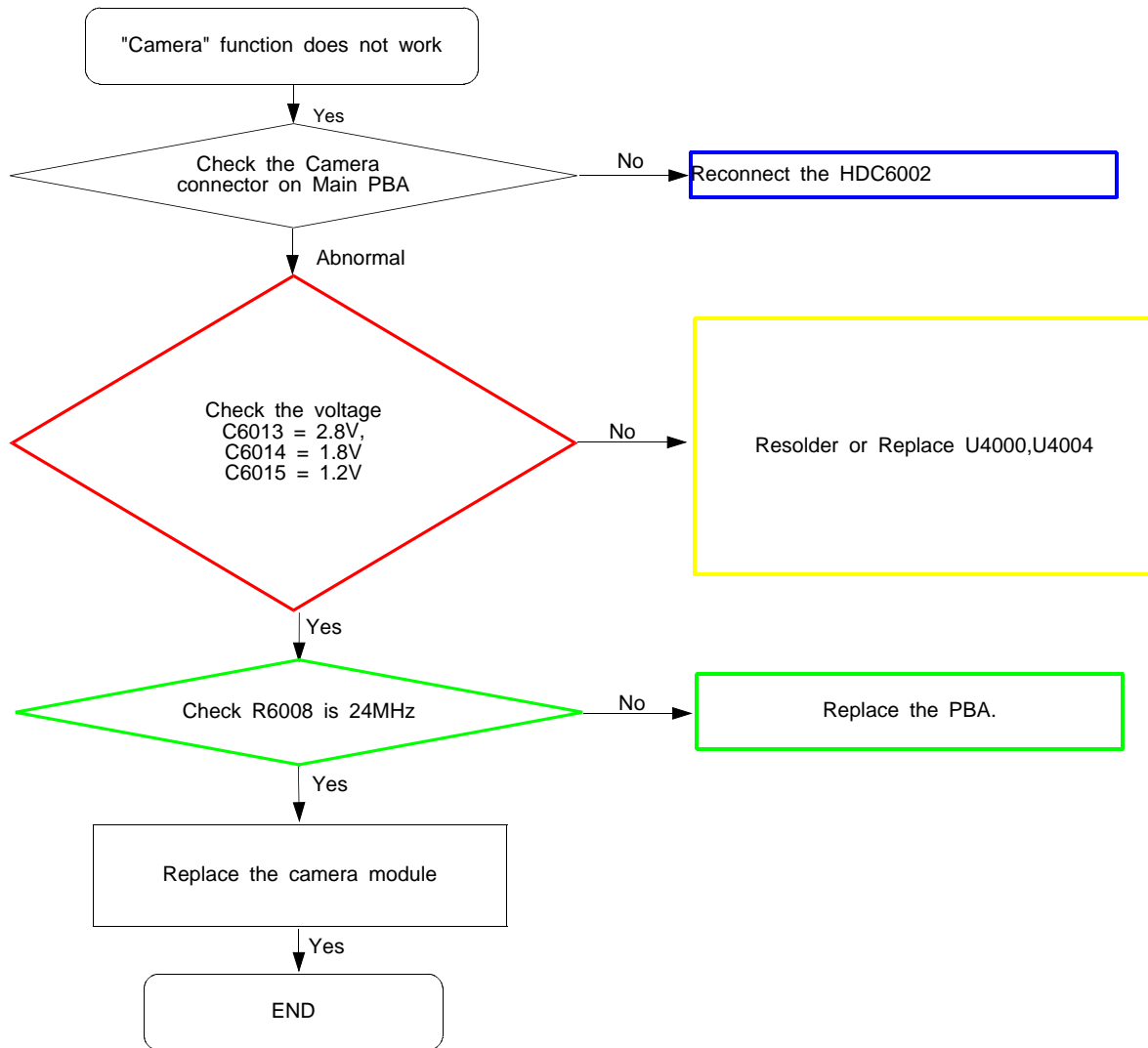
DISPLAY PART

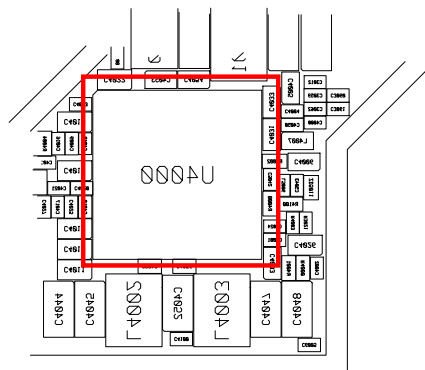
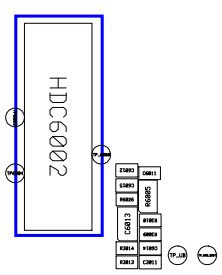
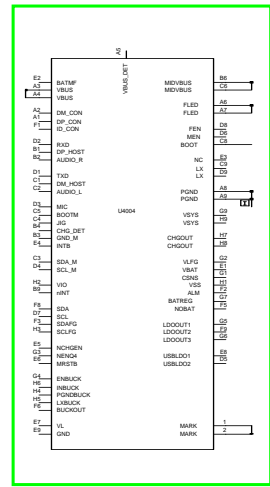
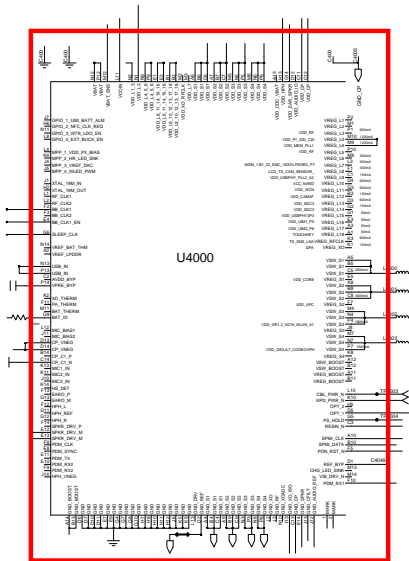
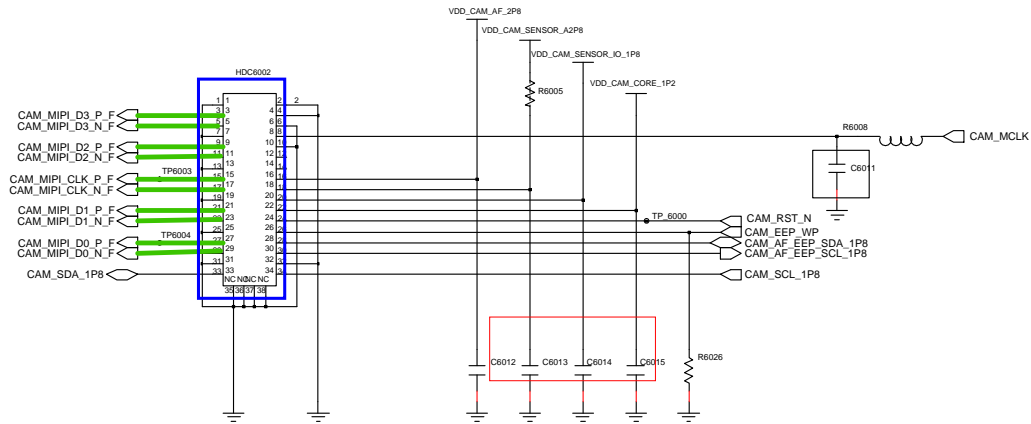


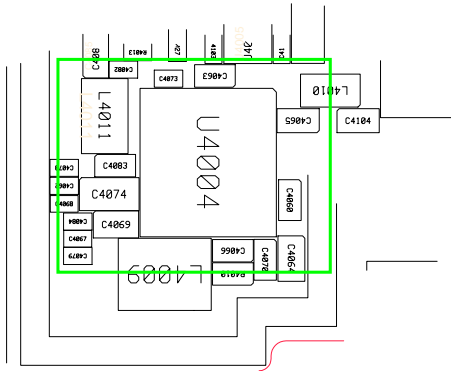
OCTA DCDC



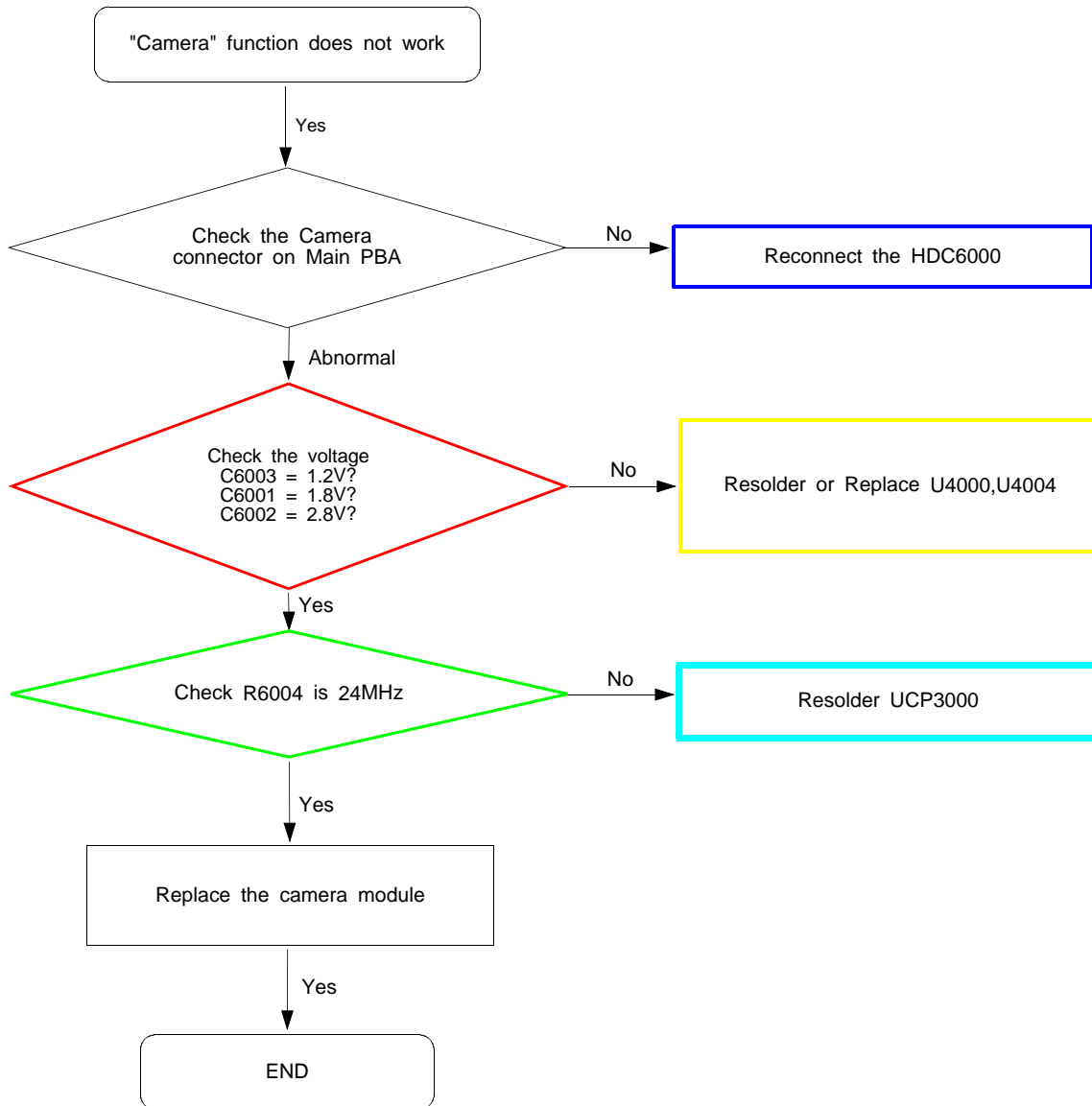
8-4-15. 13M CAM

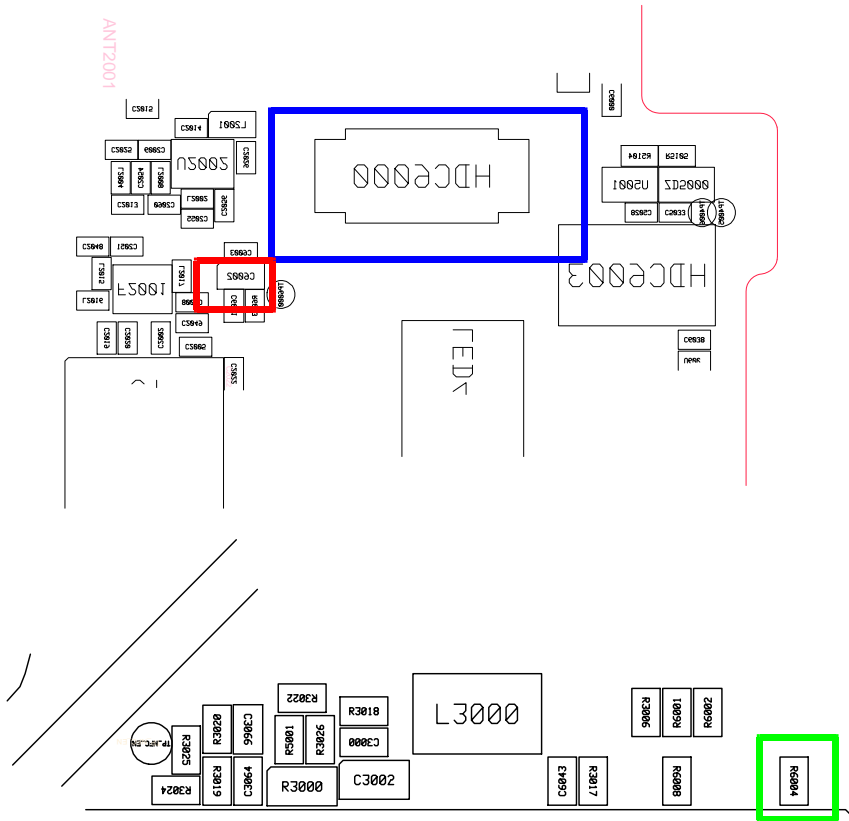
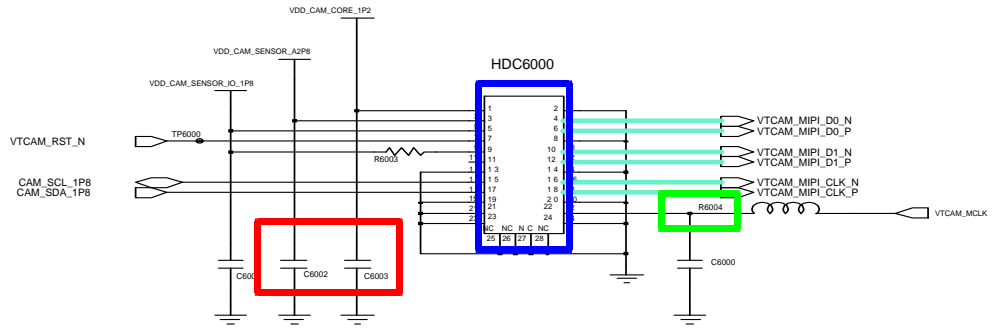


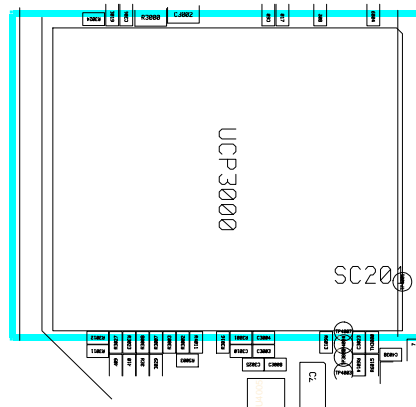
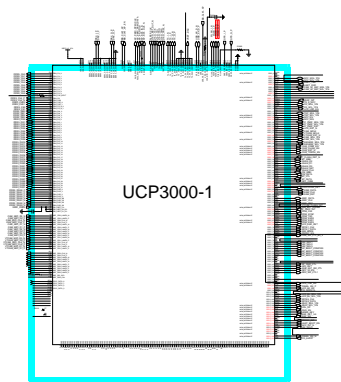
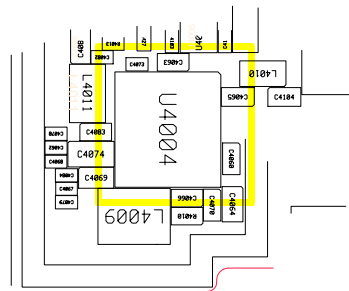
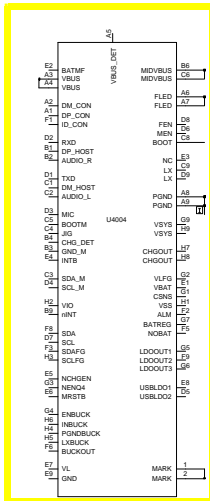
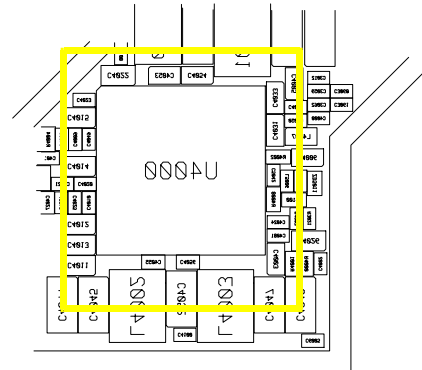
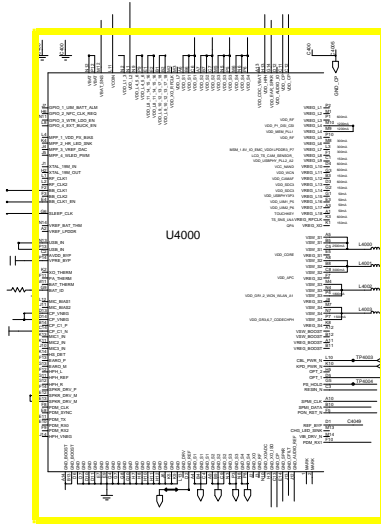




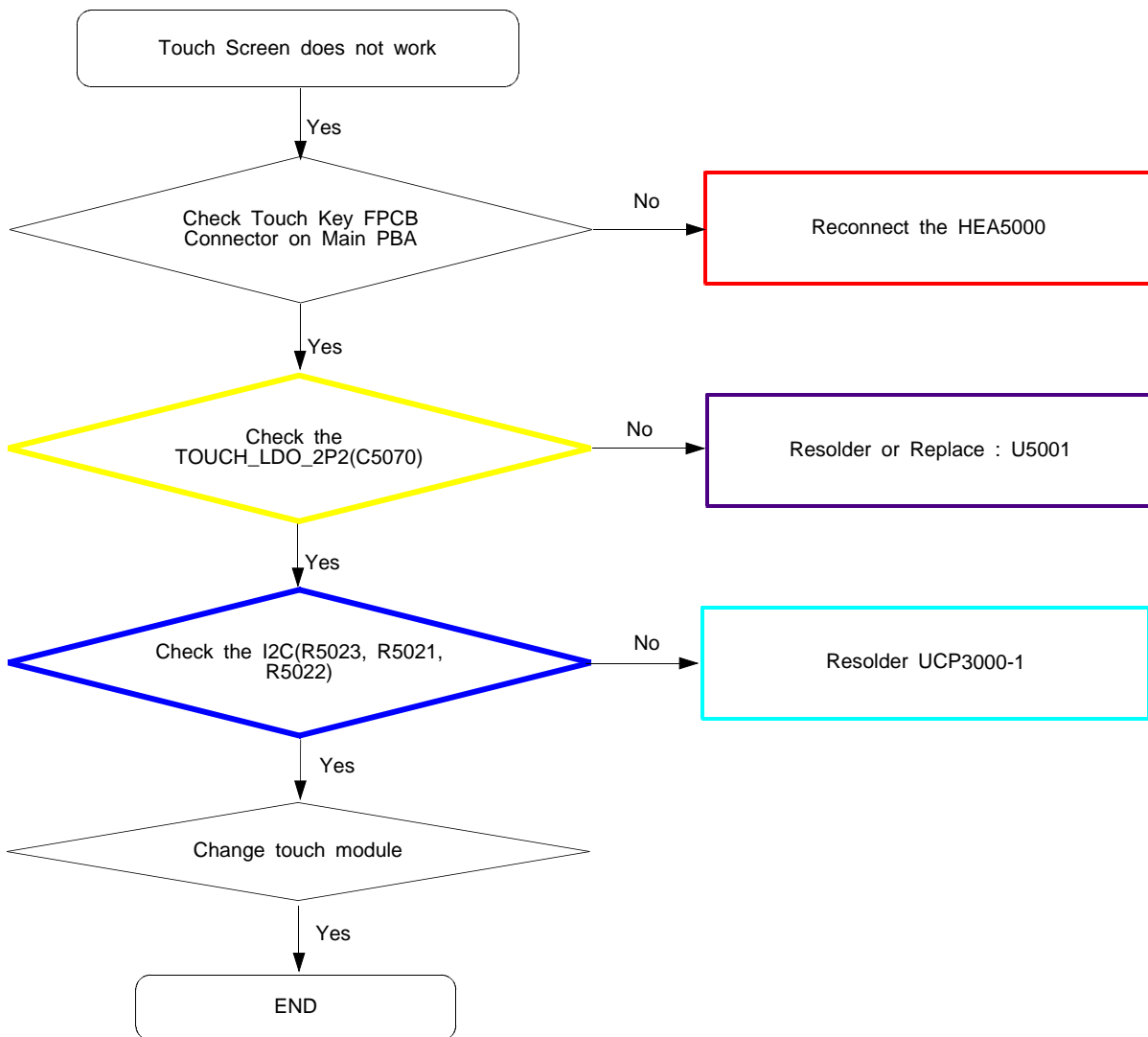
8-4-16. VT CAM

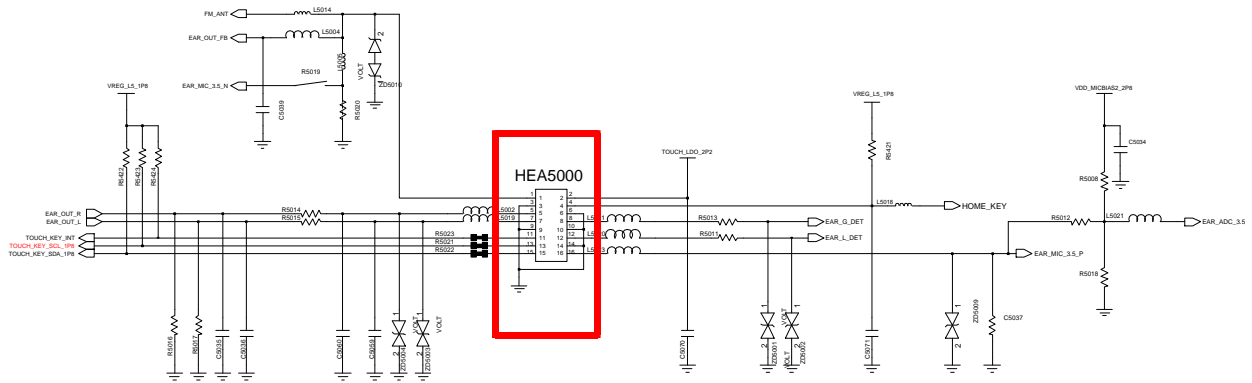




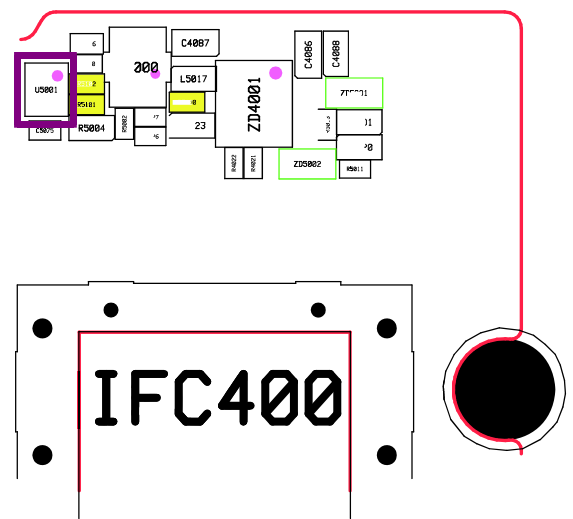
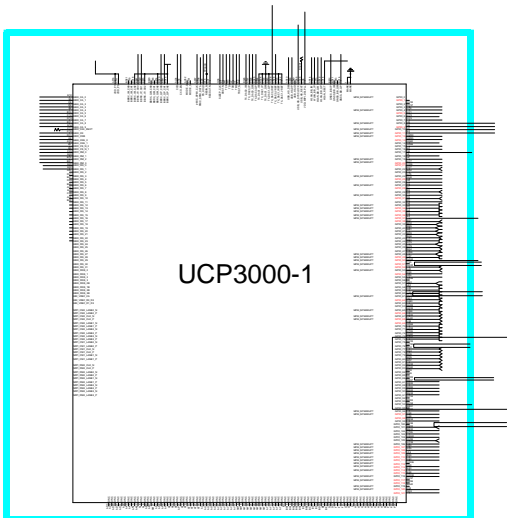
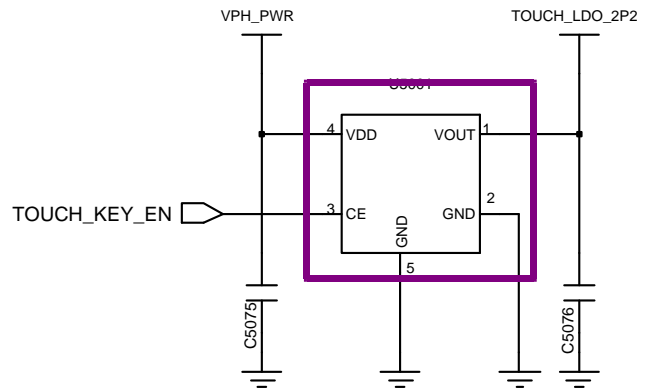
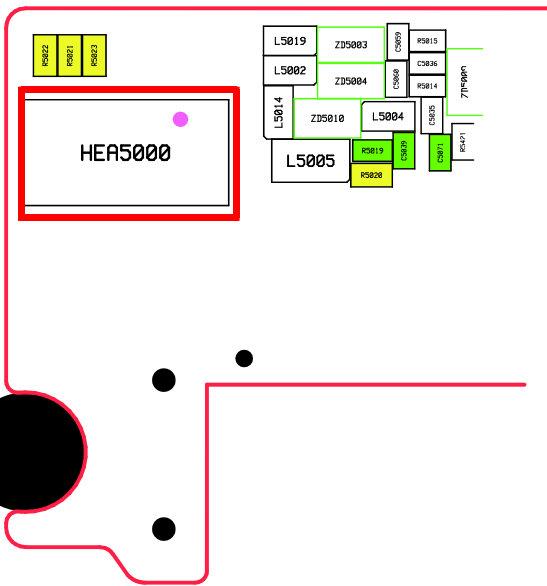


8-4-17. Touch Key FPCB

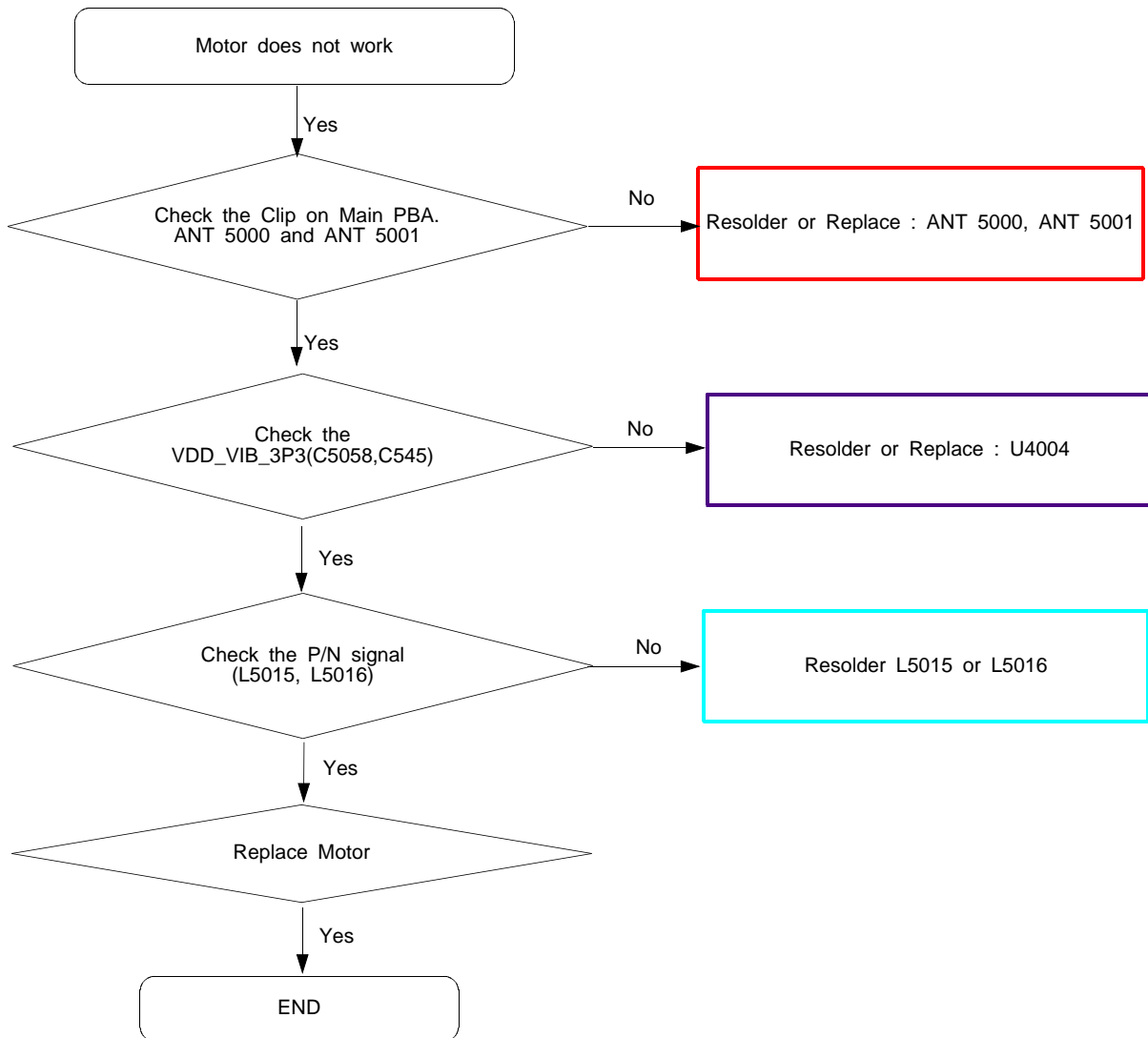


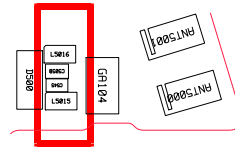
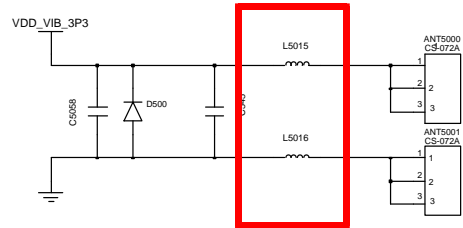
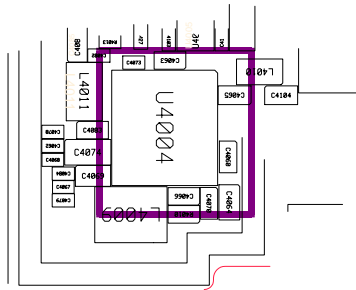
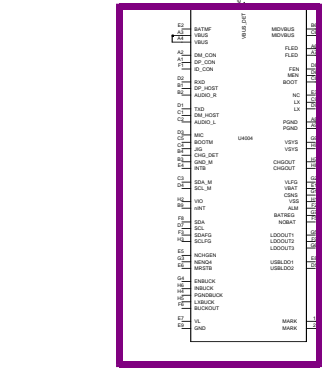


EARJACK + HOME KEY + TOUCH KEY

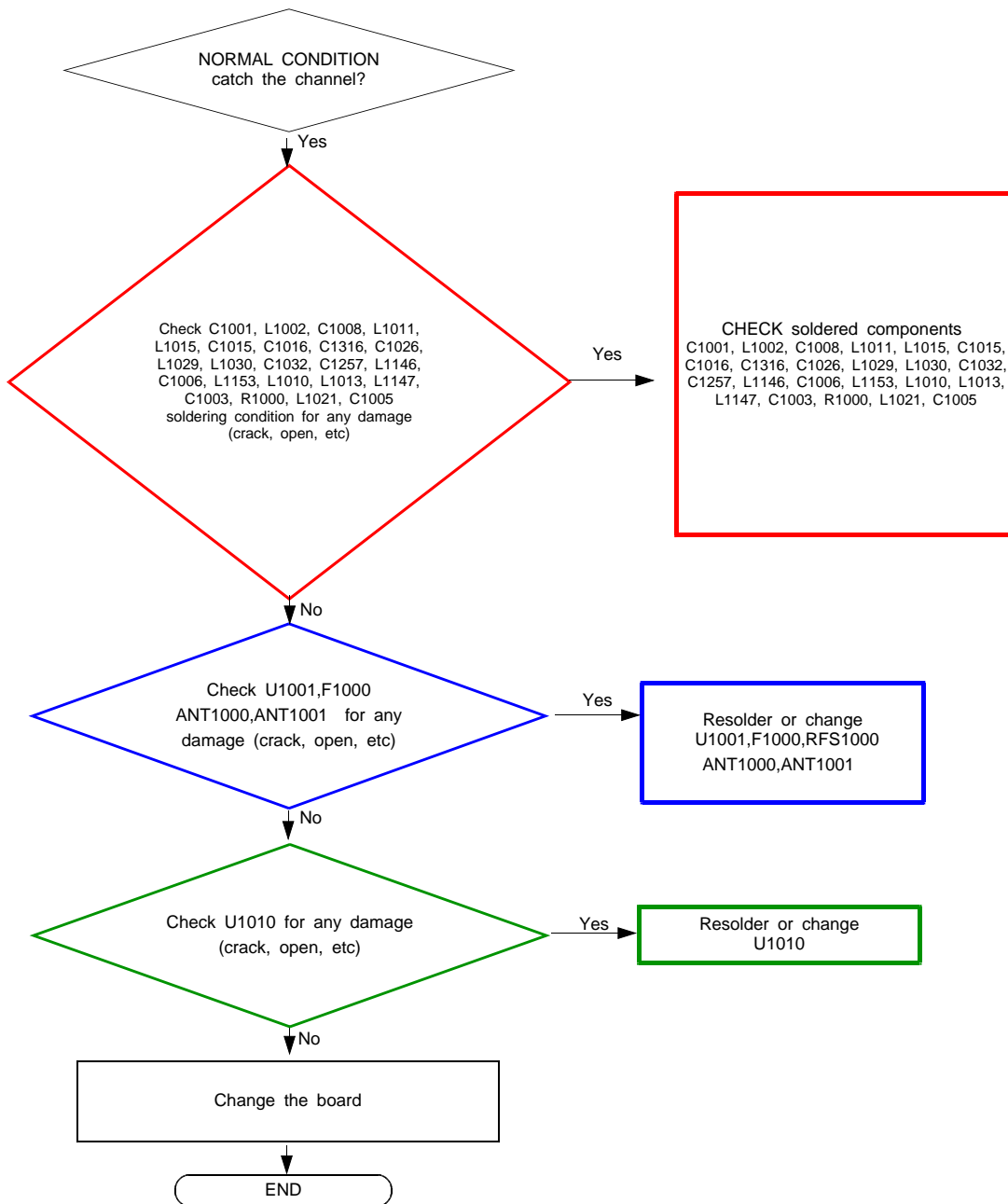


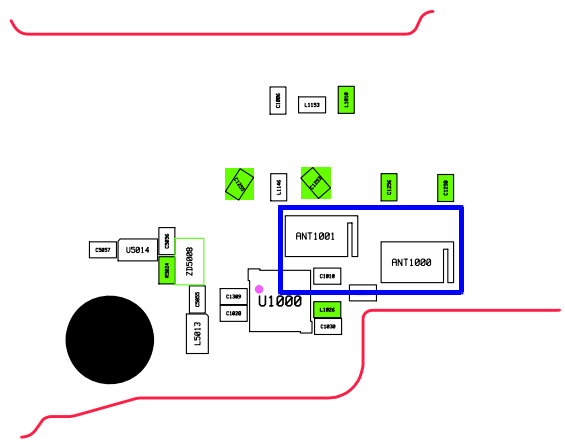
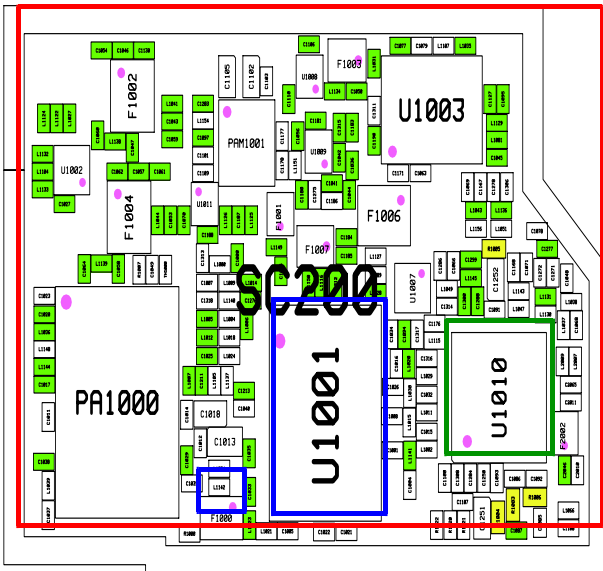
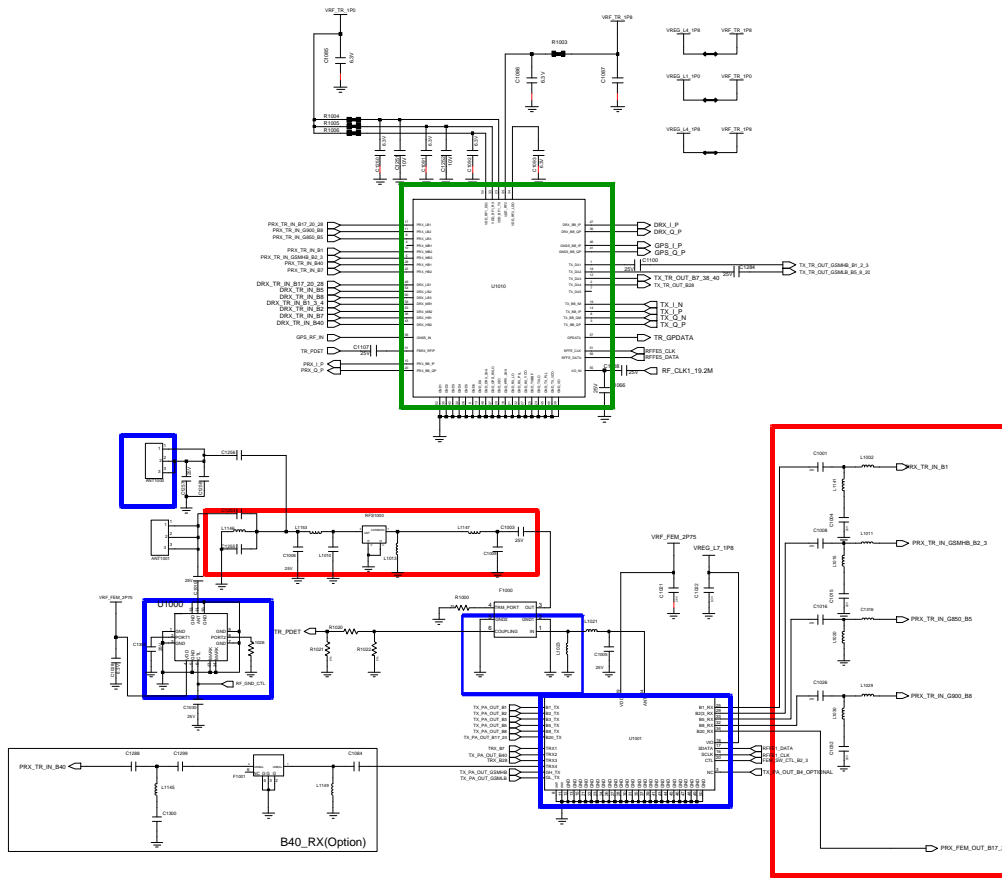
8-4-18. Motor



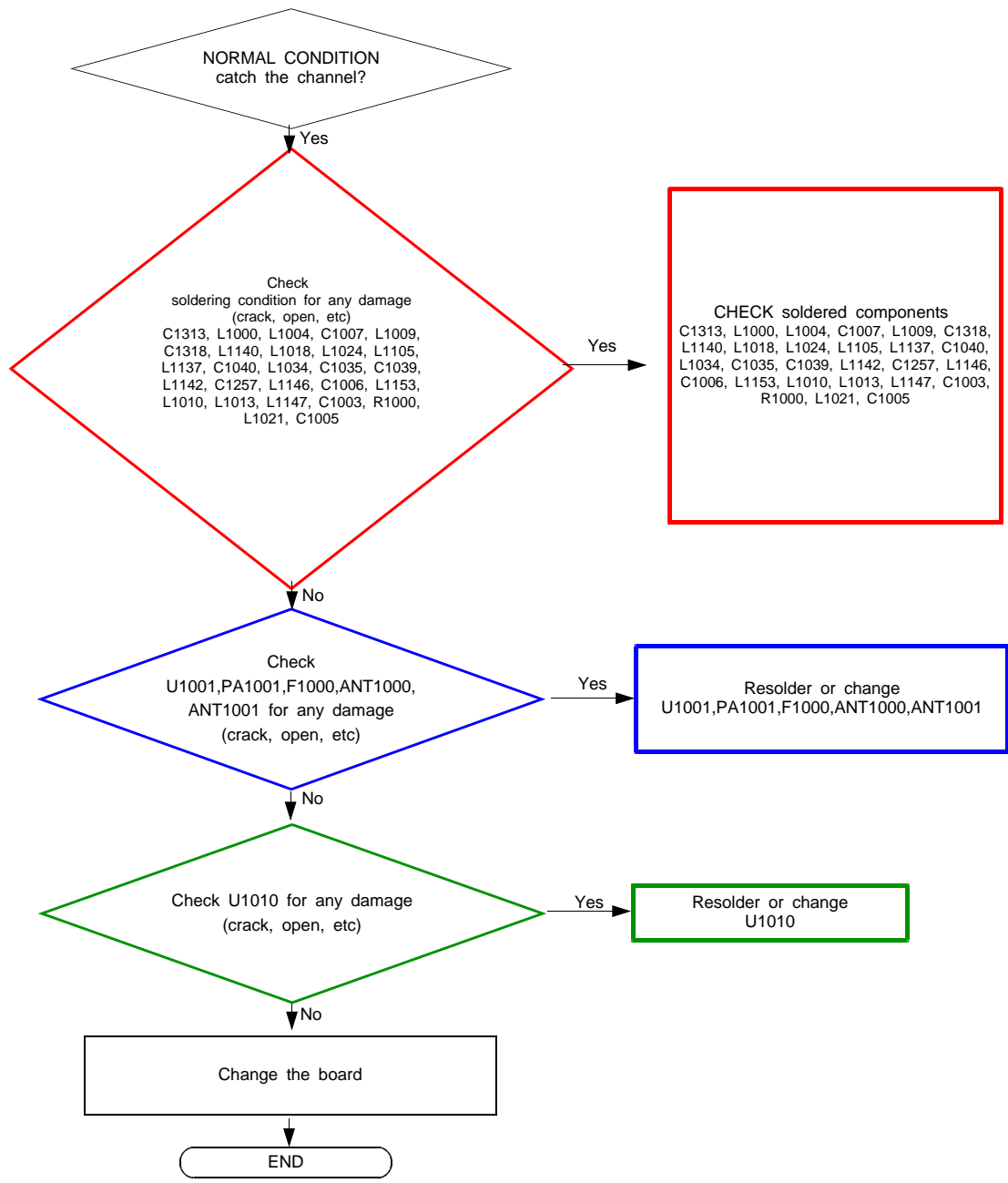


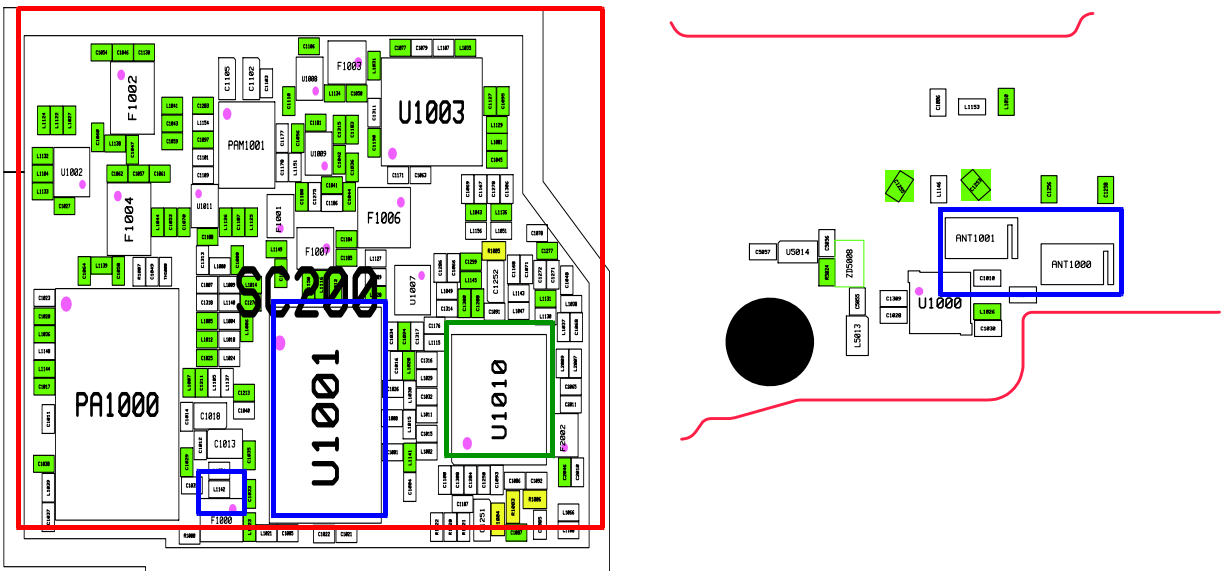
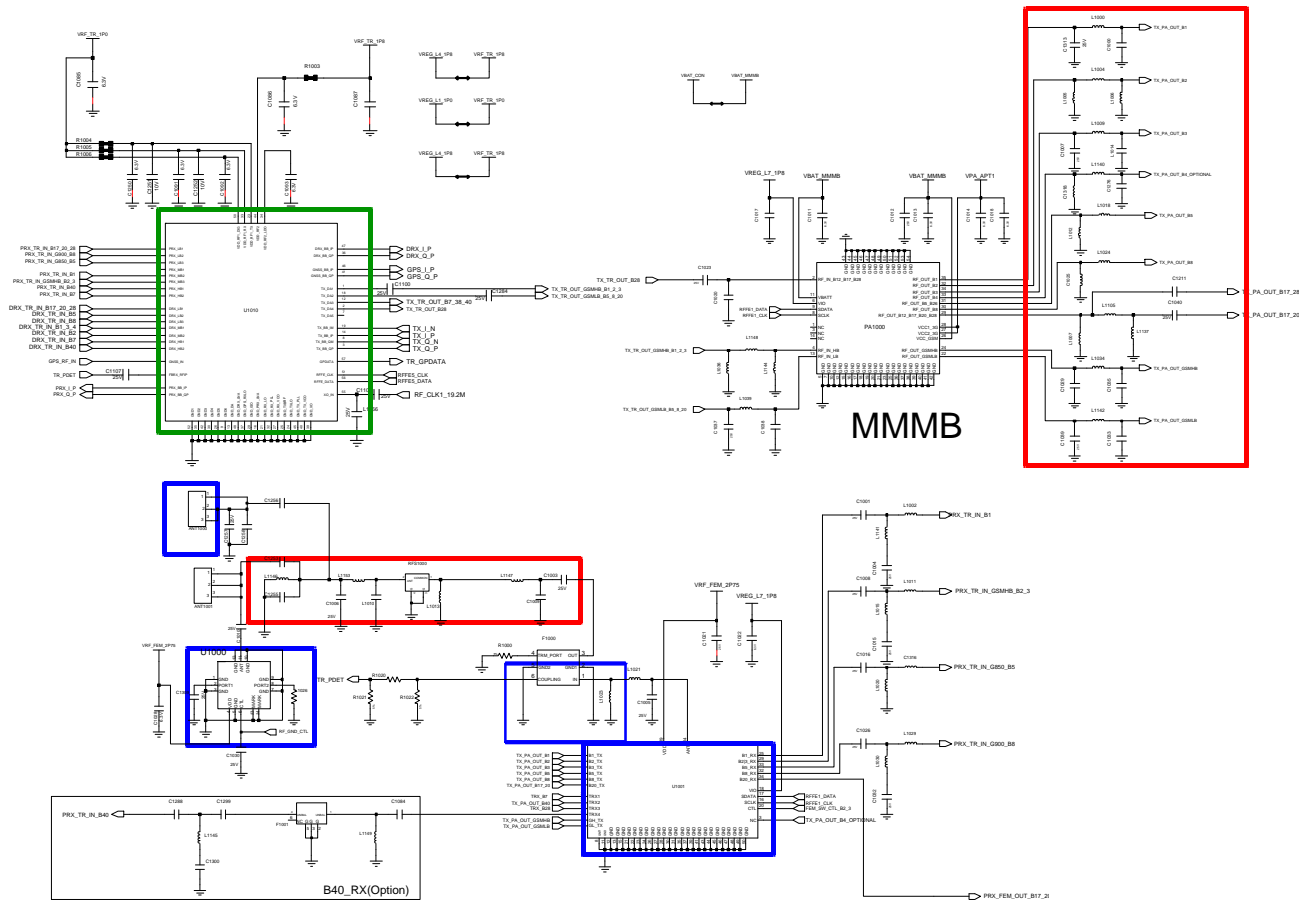
8-4-19. GSM 850,900,1800,1900 / LTE FDD BAND 1,3,7 / LTE TDD BAND 38,39,40,41 / TD-SCDMA B34/B39 RX



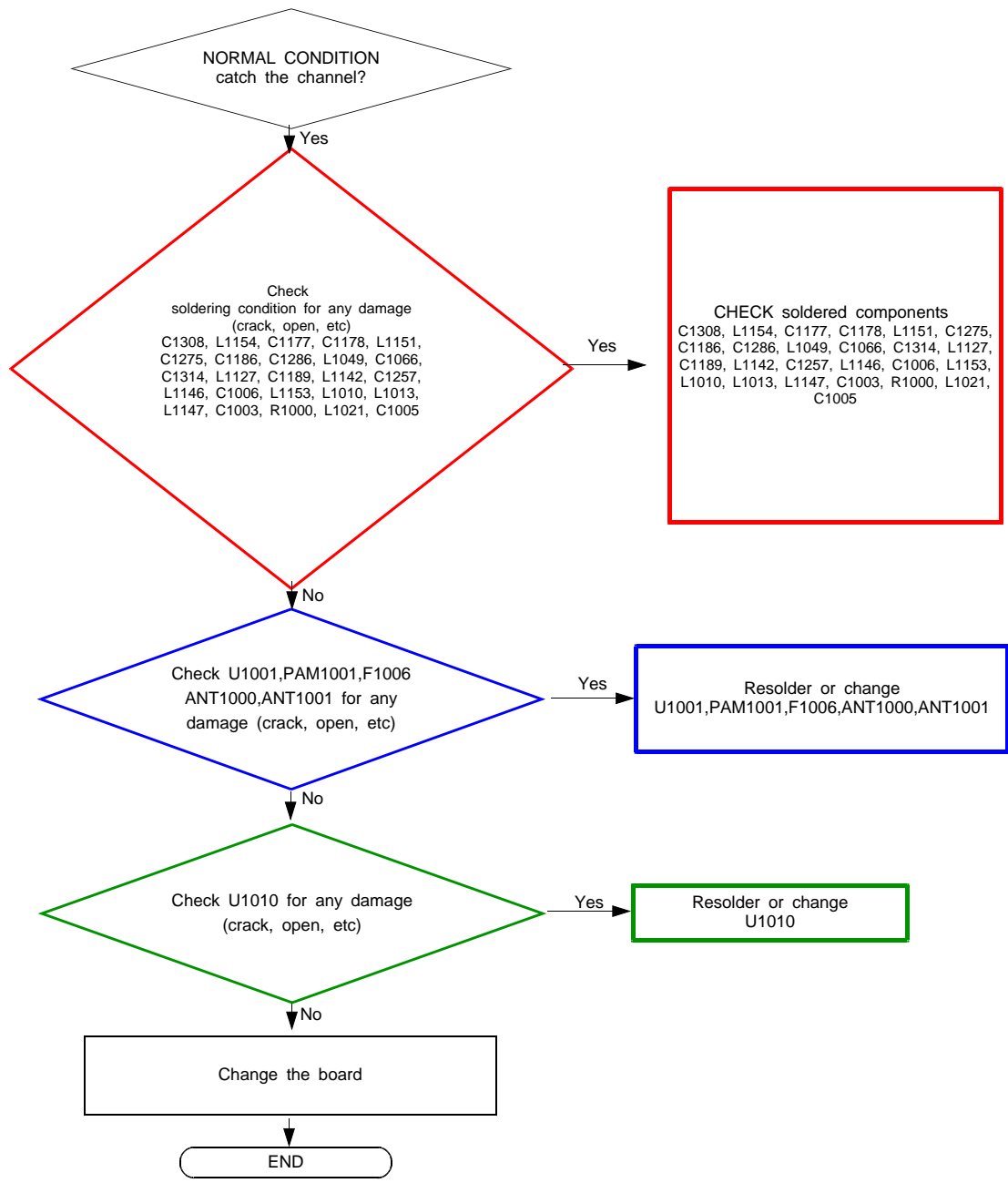


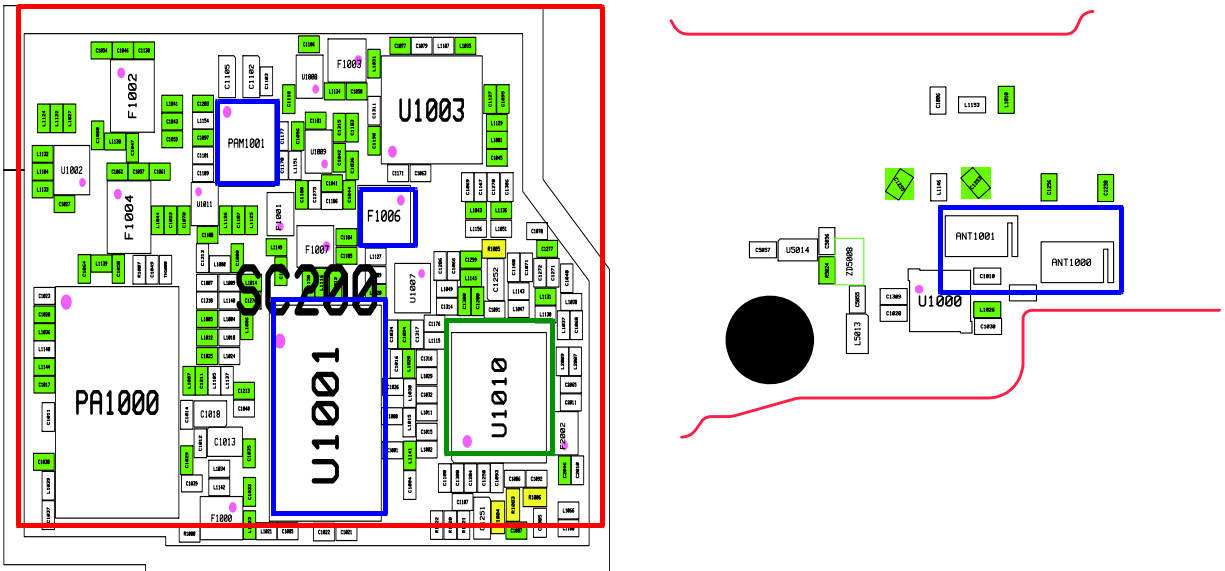
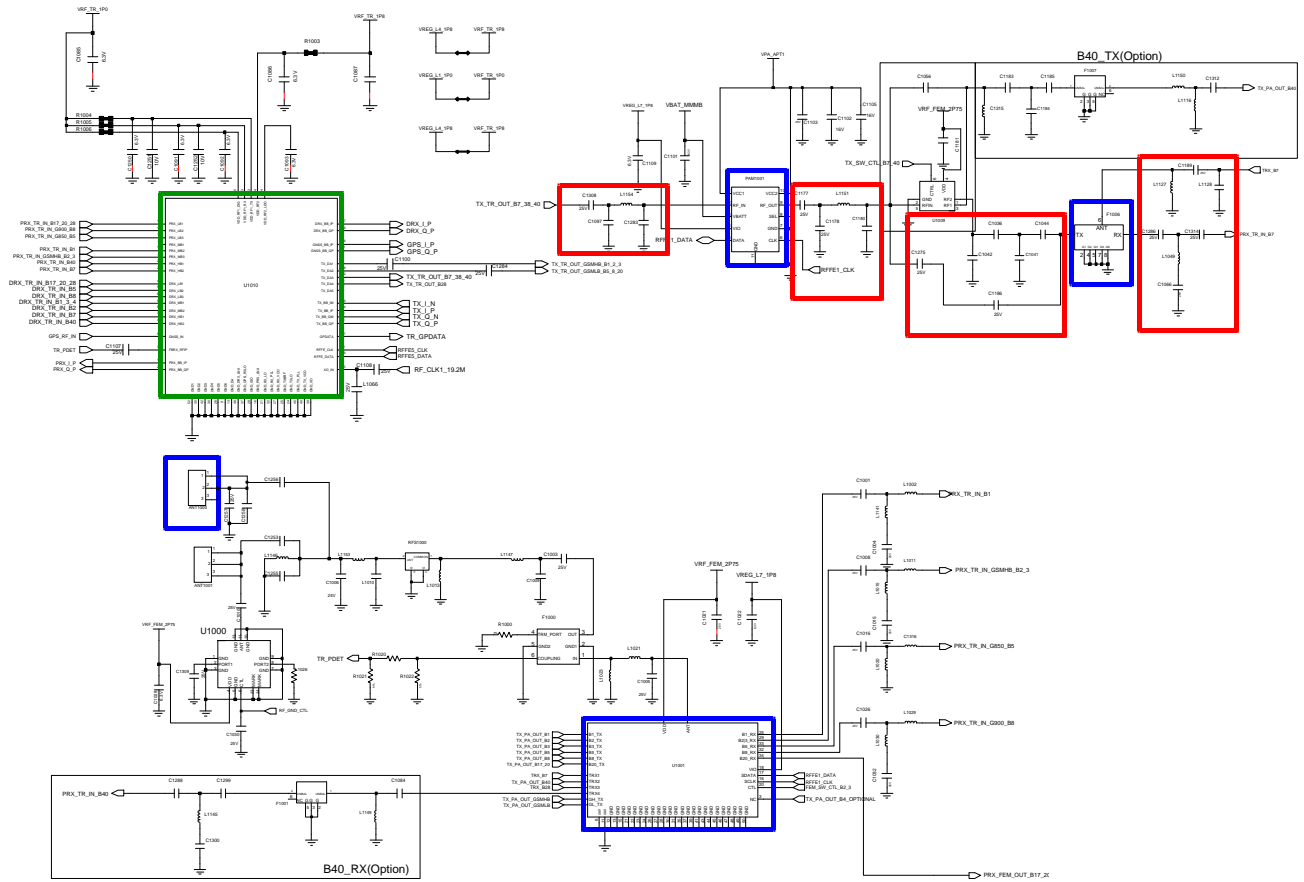
8-4-20. GSM 850,900,1800,1900 / LTE FDD BAND 1,3,7 / LTE TDD BAND 38,39,40,41 / TD-SCDMA B34/B39 TX





8-4-21. LTE B7 TRX





8-5. Service Schematics
 - NC point(Top view)
 UCP3000(AP)

