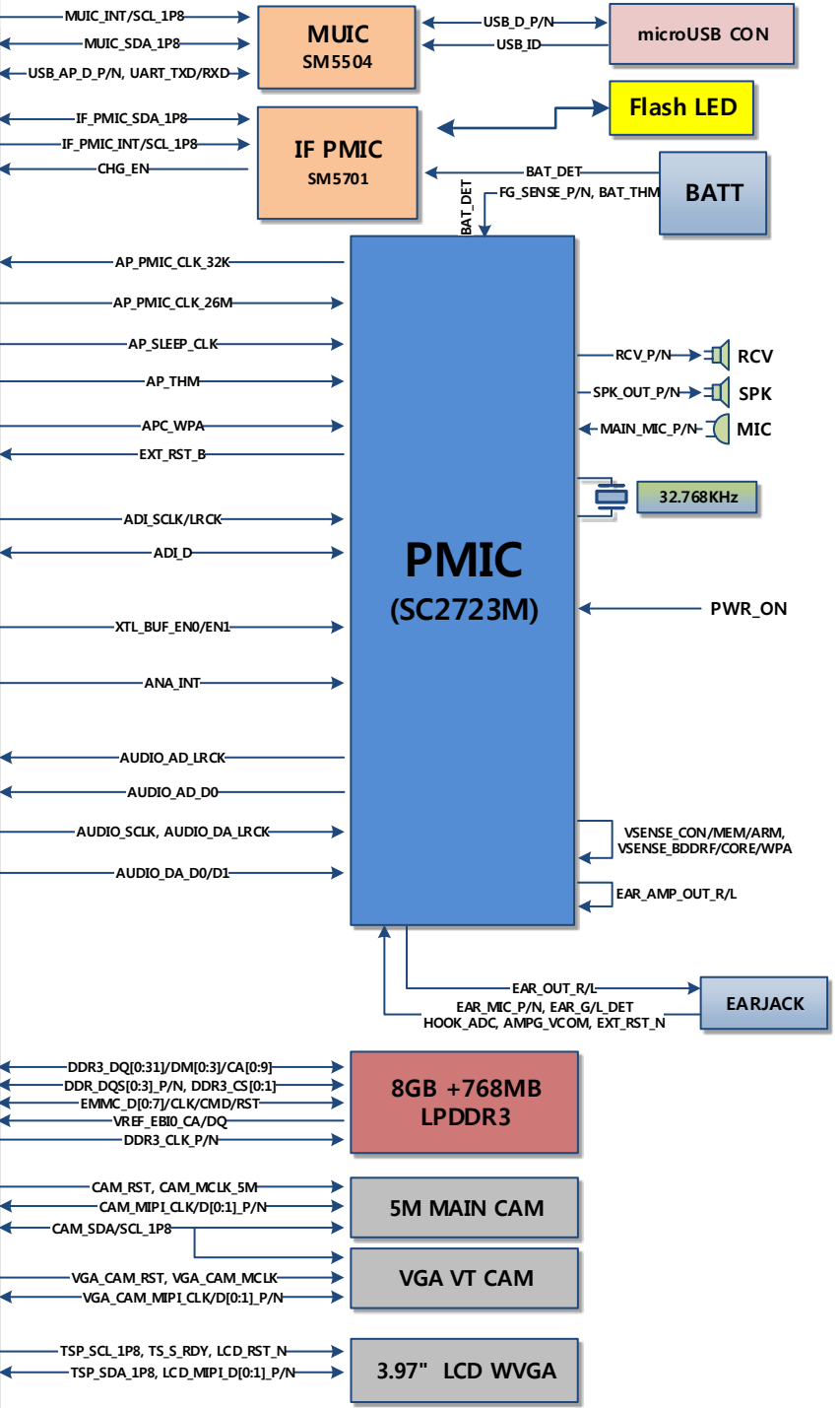
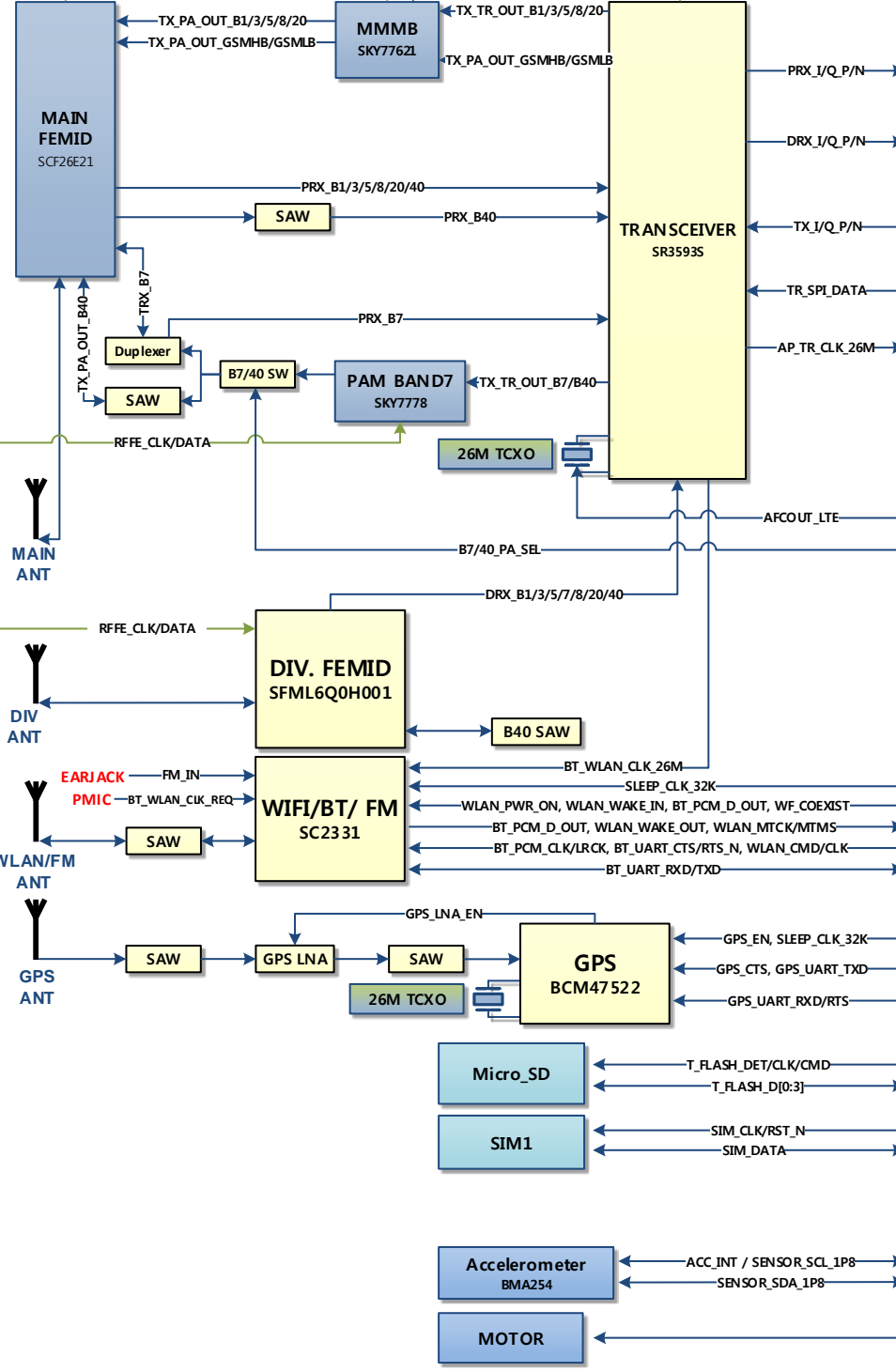
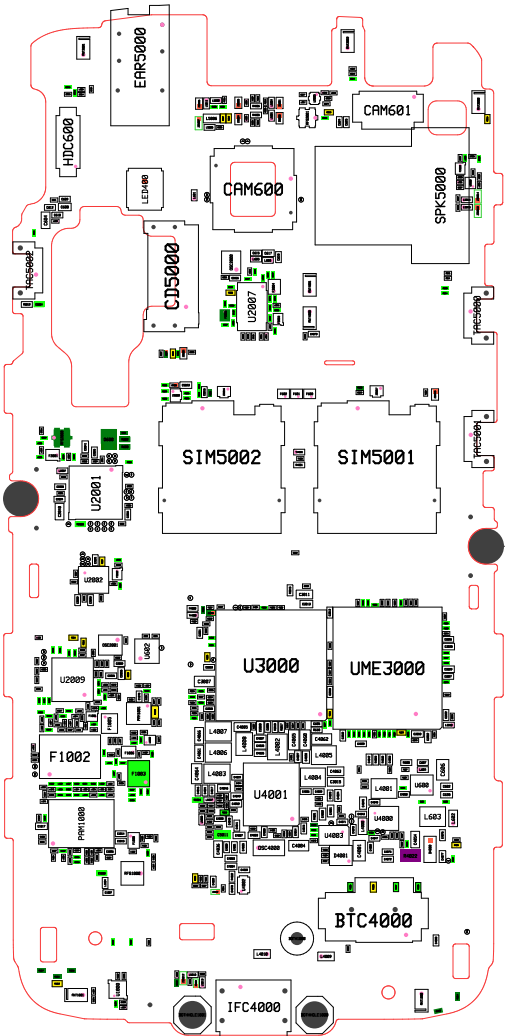
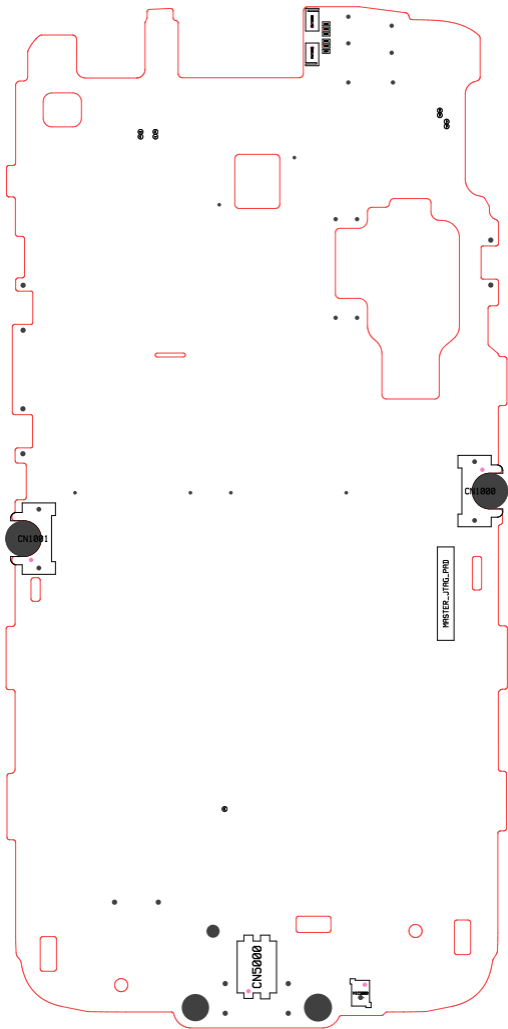


SM-J106F Block Diagram

SC9830I (CP+AP)







CN1001

CN1008

MASTER_JTAG_PAD

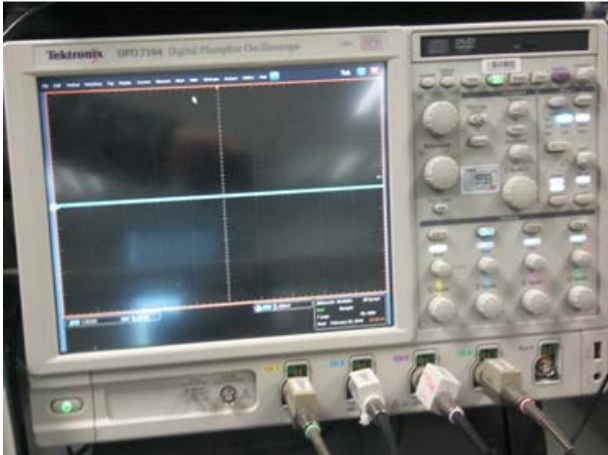
CN5000

0805

0805

8. Level 3 Repair

8-3. Flow chart of Troubleshooting.



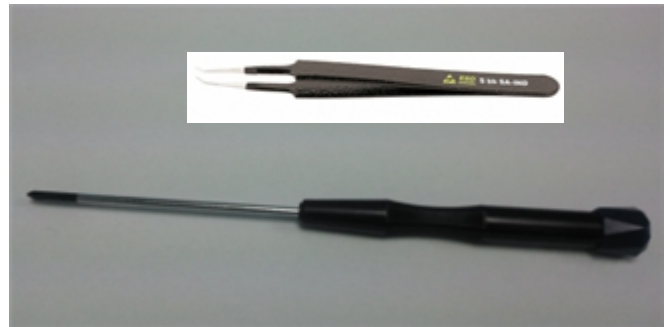
Oscilloscope



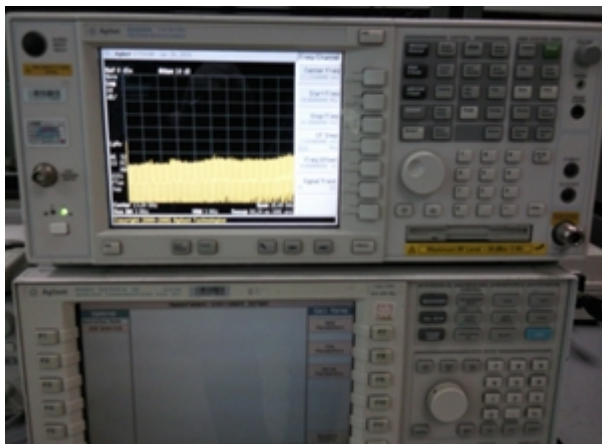
Digital Multimeter



Power Supply



+ driver, ESD Safe Tweezer



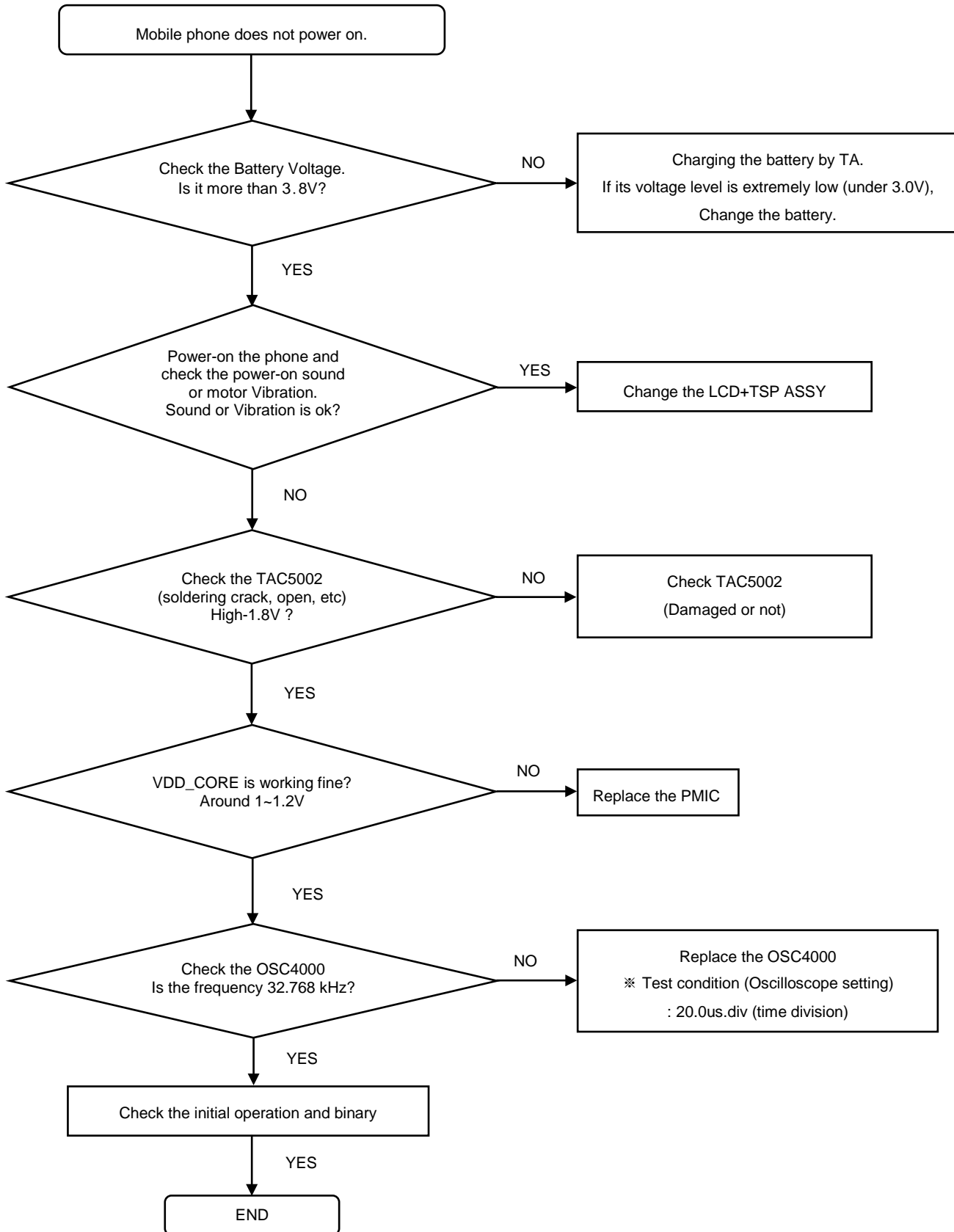
8960 & Spectrum Analyzer



Soldering iron

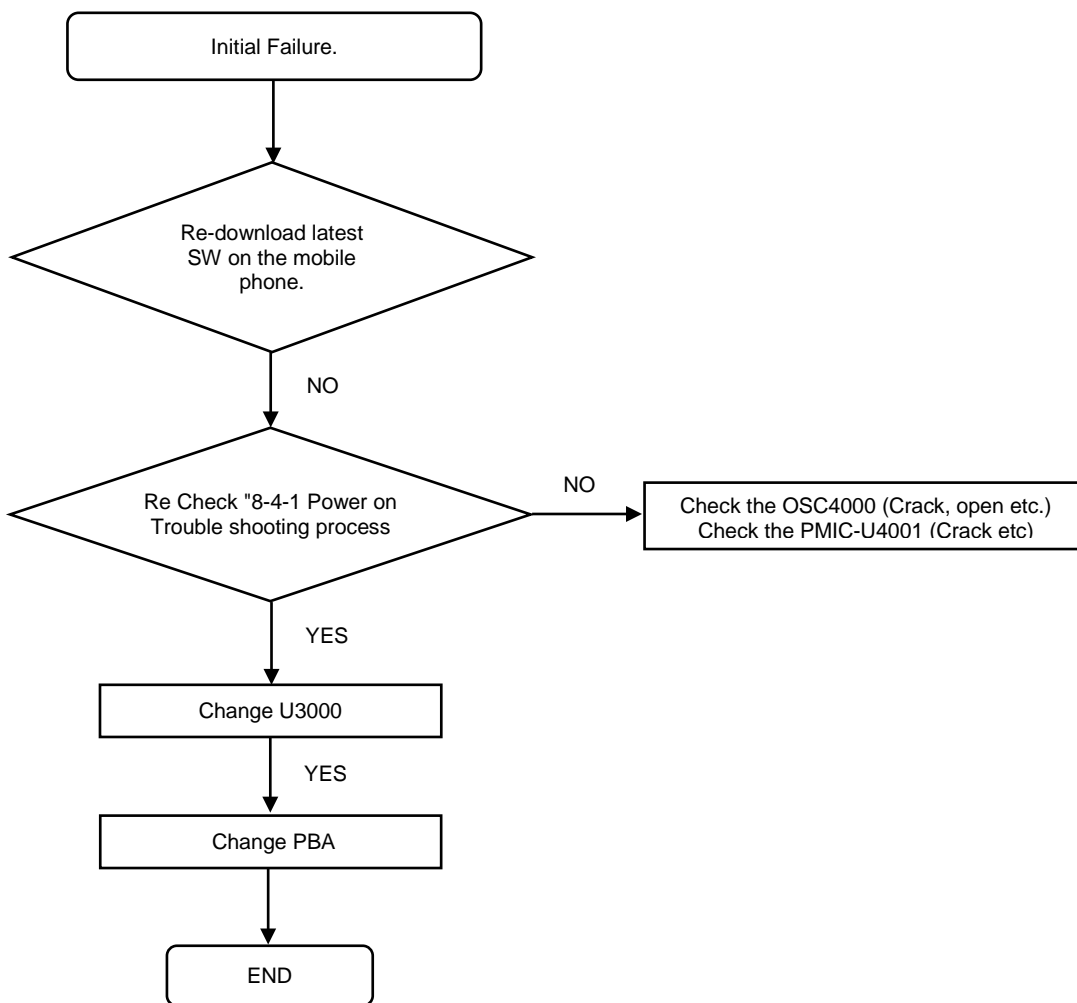
8. Level 3 Repair

8-4-1. Power On



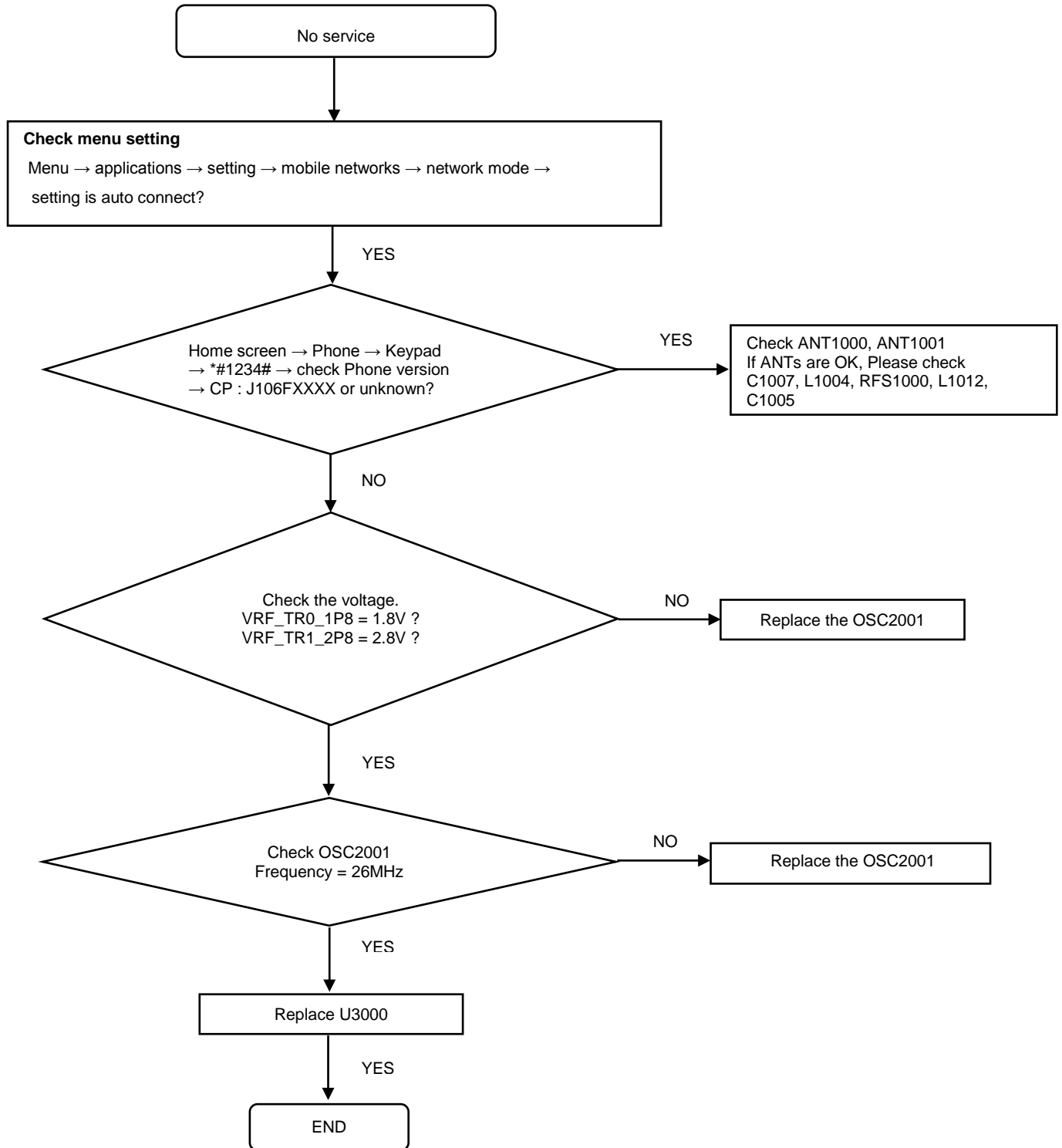
8. Level 3 Repair

8-4-2. Initial



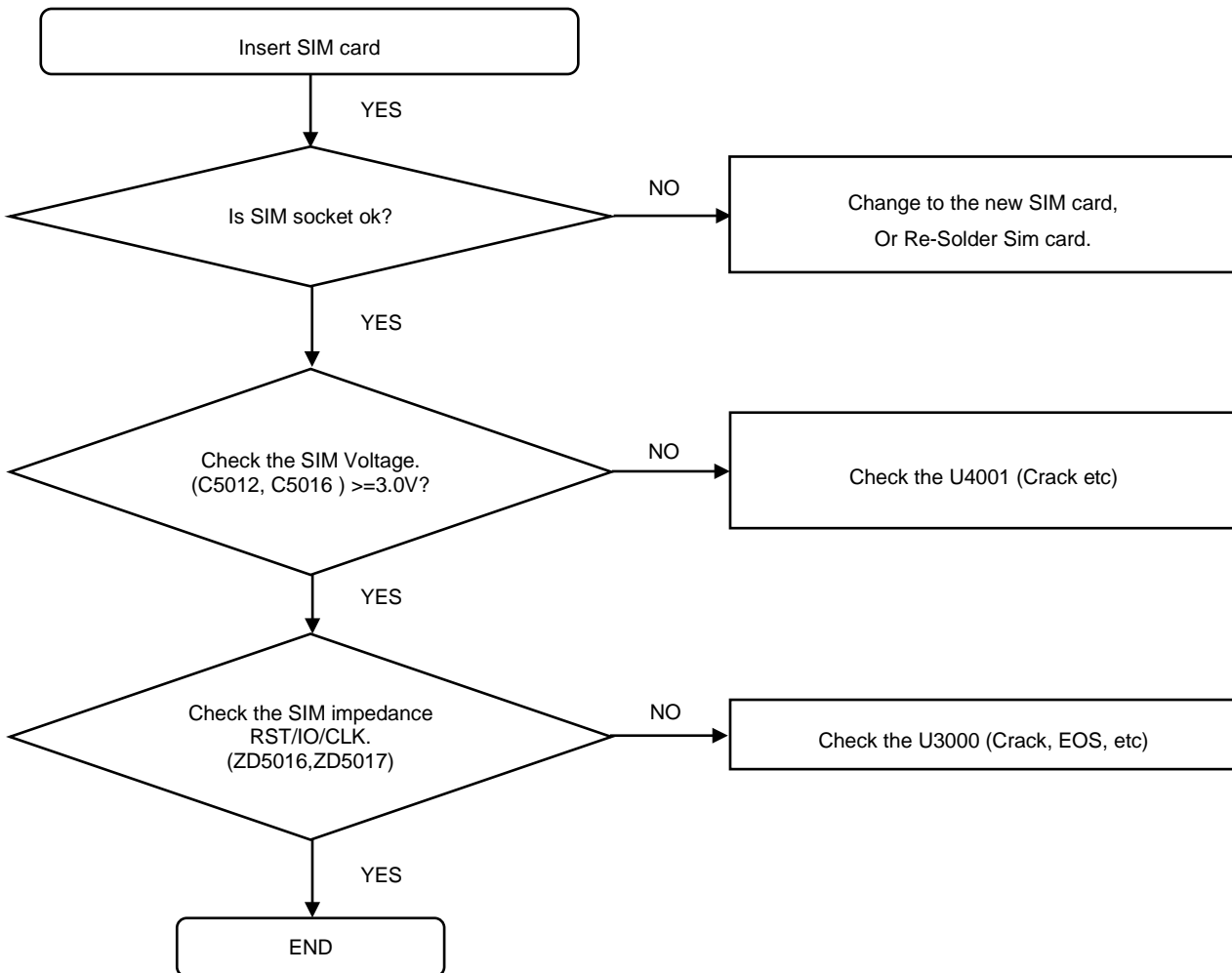
8. Level 3 Repair

8-4-3. No Service



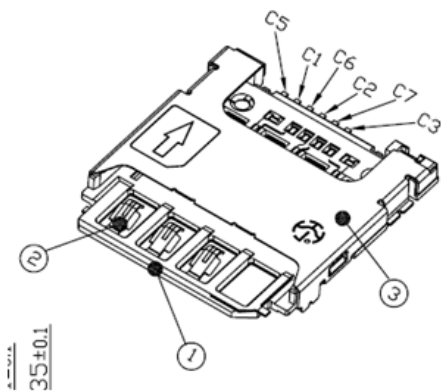
8. Level 3 Repair

8-4-4. Sim Part



Normal case's Impedance

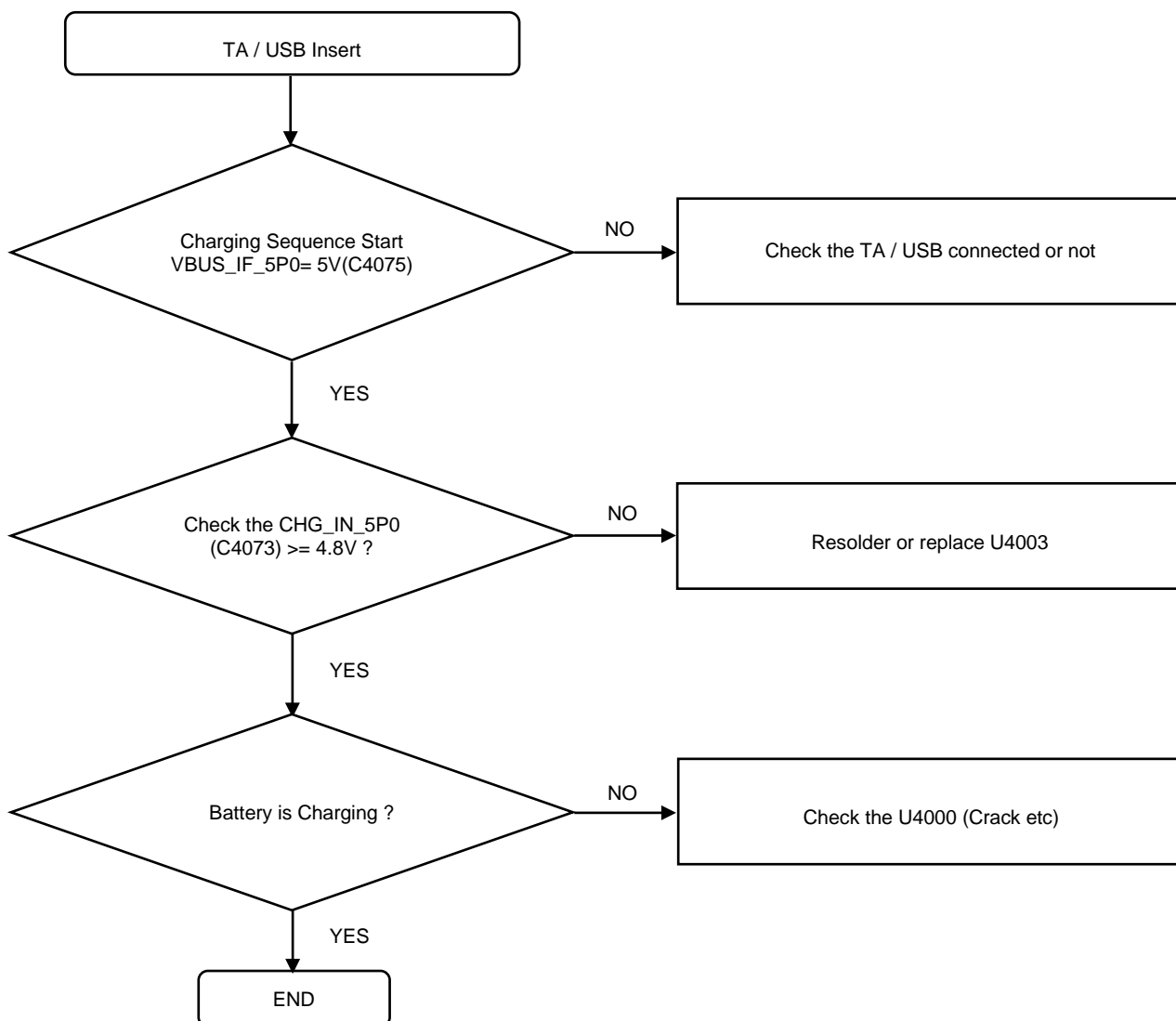
SIM	C5	C1	C6	C2	C7	C3
#1	SHORT	1.3M	OPEN	6.2M	6.7M	6.5M
#2	SHORT	0.9M	OPEN	6.2M	7.1M	6.5M
#3	SHORT	1M	OPEN	6.3M	6.6M	6.2M



PIN No.	Name
C1	Vcc
C2	RST
C3	CLK
C4	Reserved
C5	GND
C6	Vpp
C7	I/O
C8	Reserved

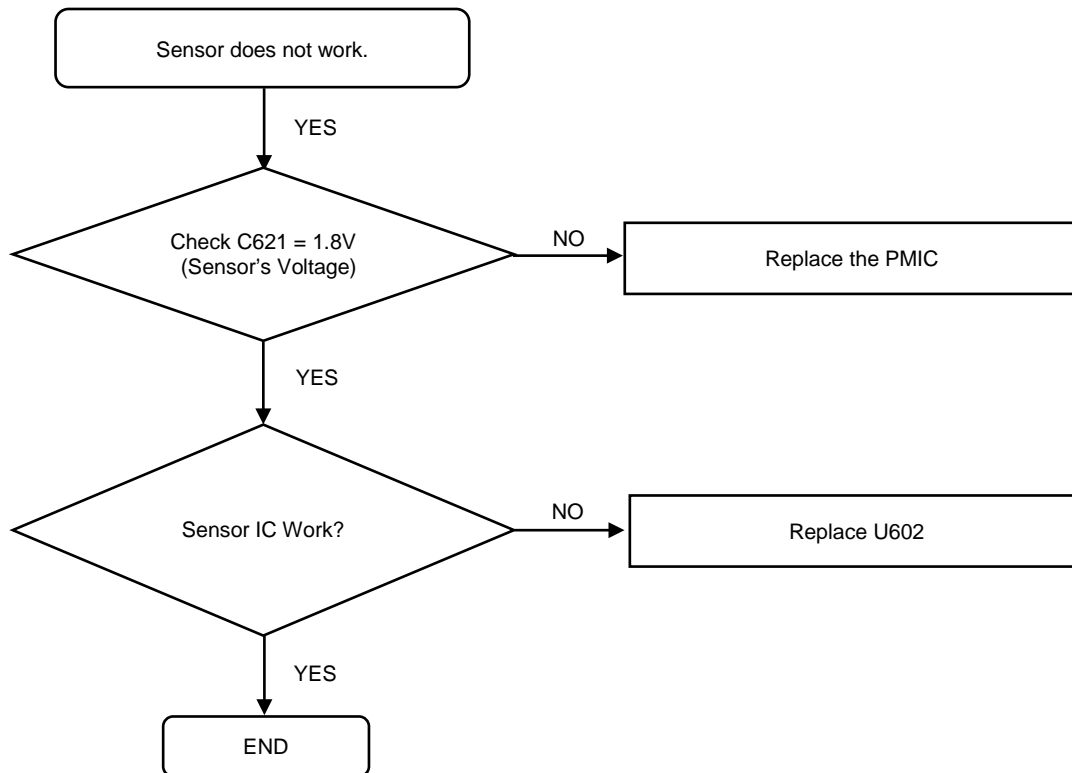
8. Level 3 Repair

8-4-5. Charging Part



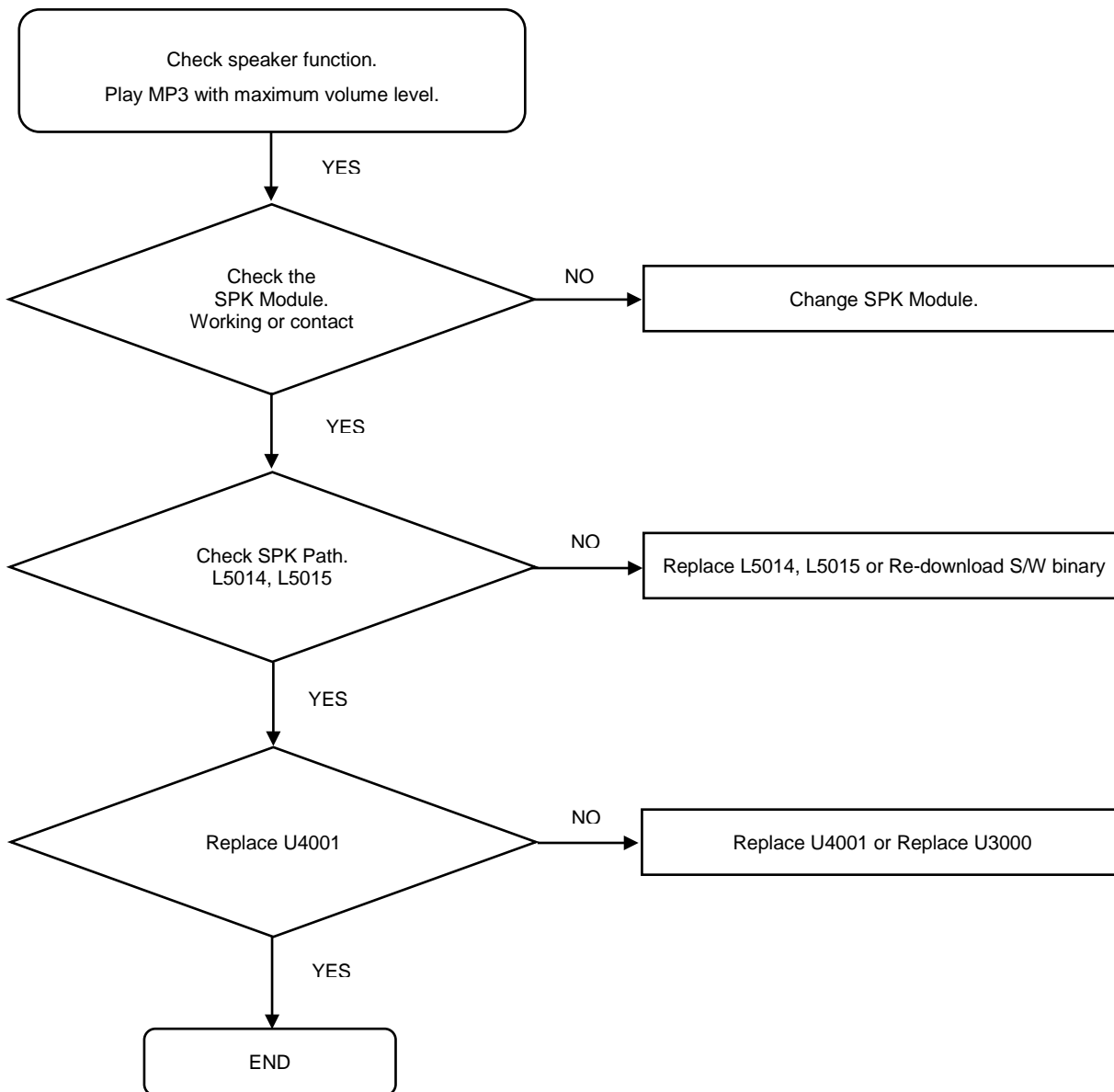
8. Level 3 Repair

8-4-6. Accel Sensor



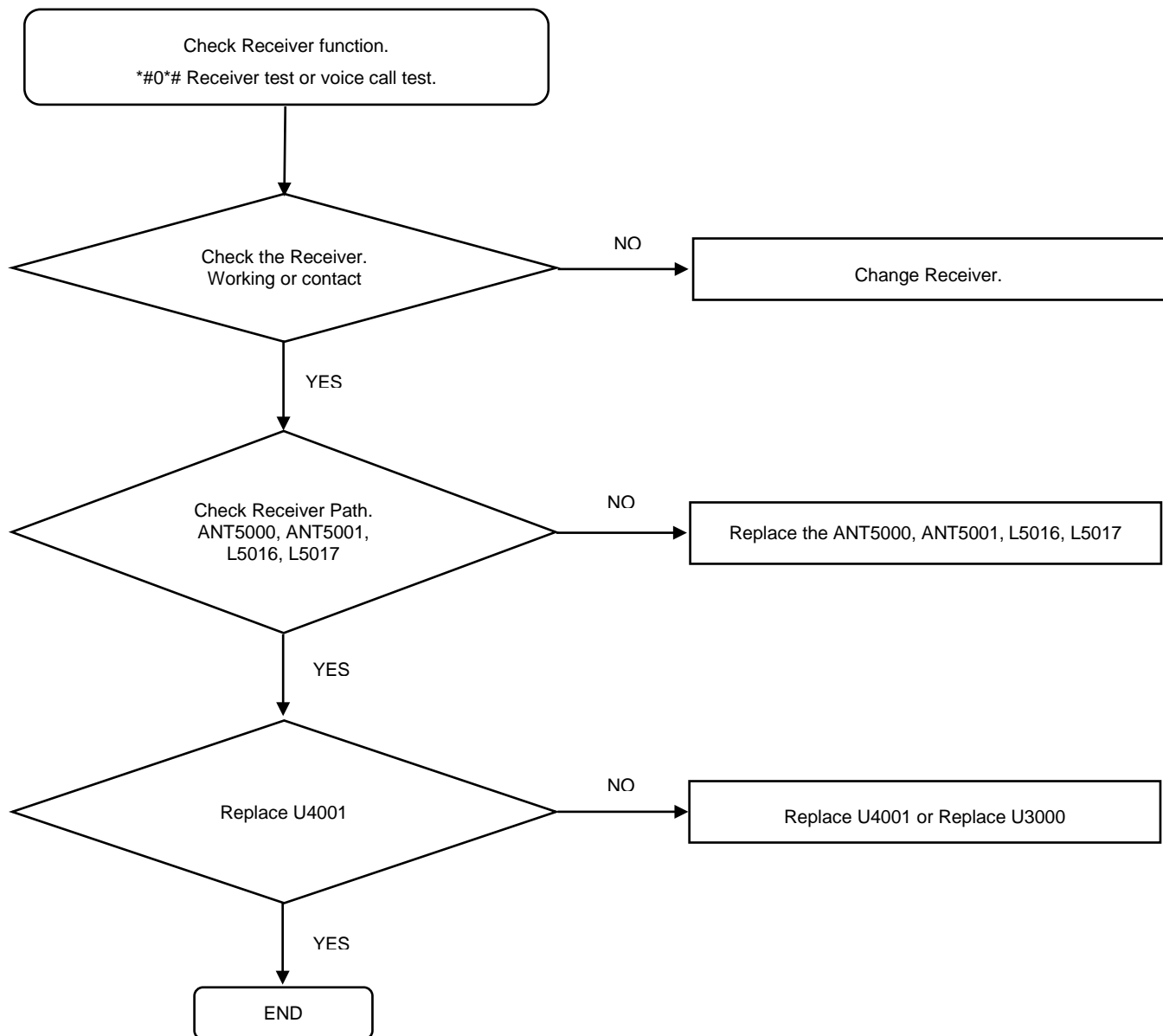
8. Level 3 Repair

8-4-7. Speaker Part



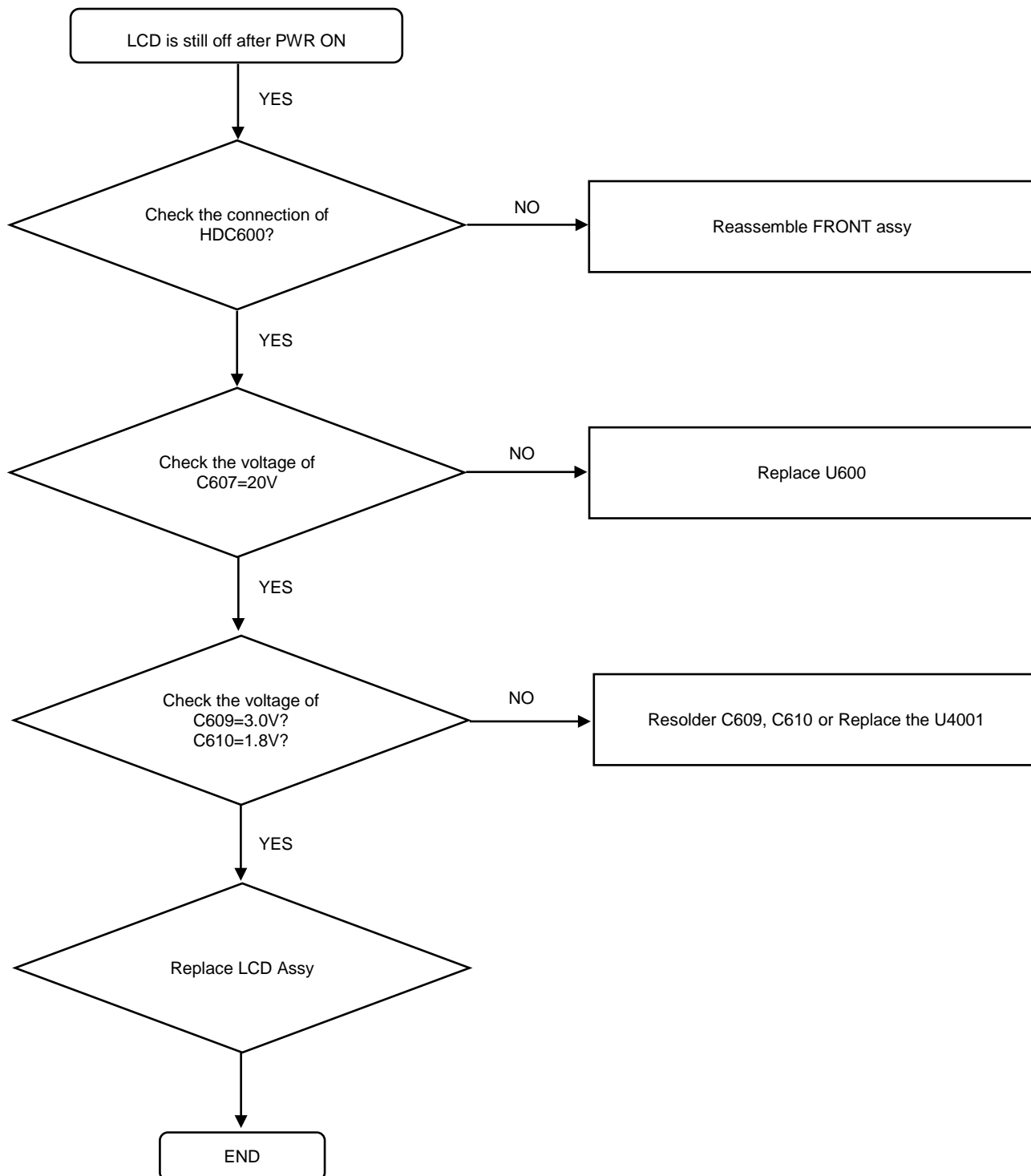
8. Level 3 Repair

8-4-8. Receiver Part



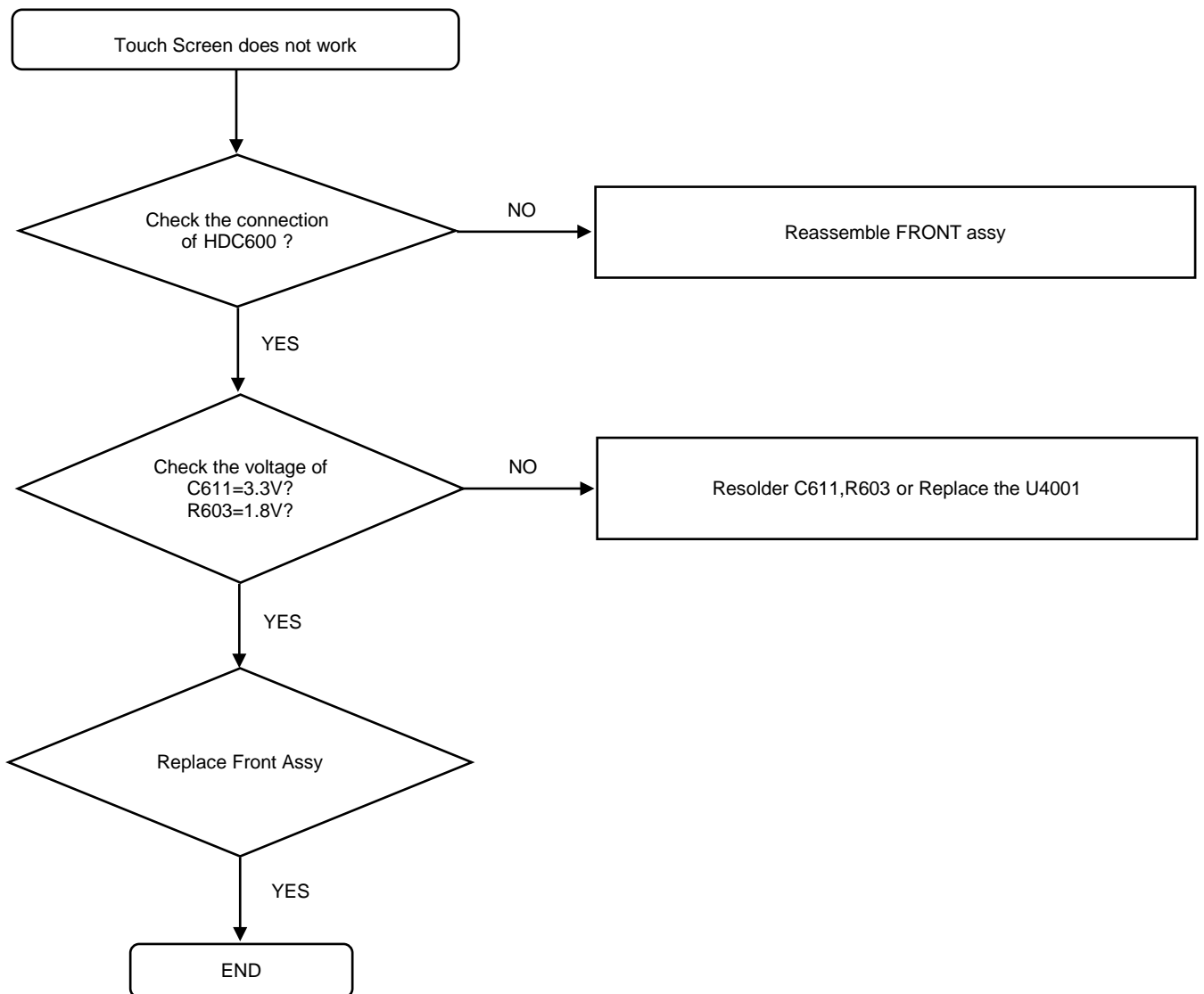
8. Level 3 Repair

8-4-9. LCD



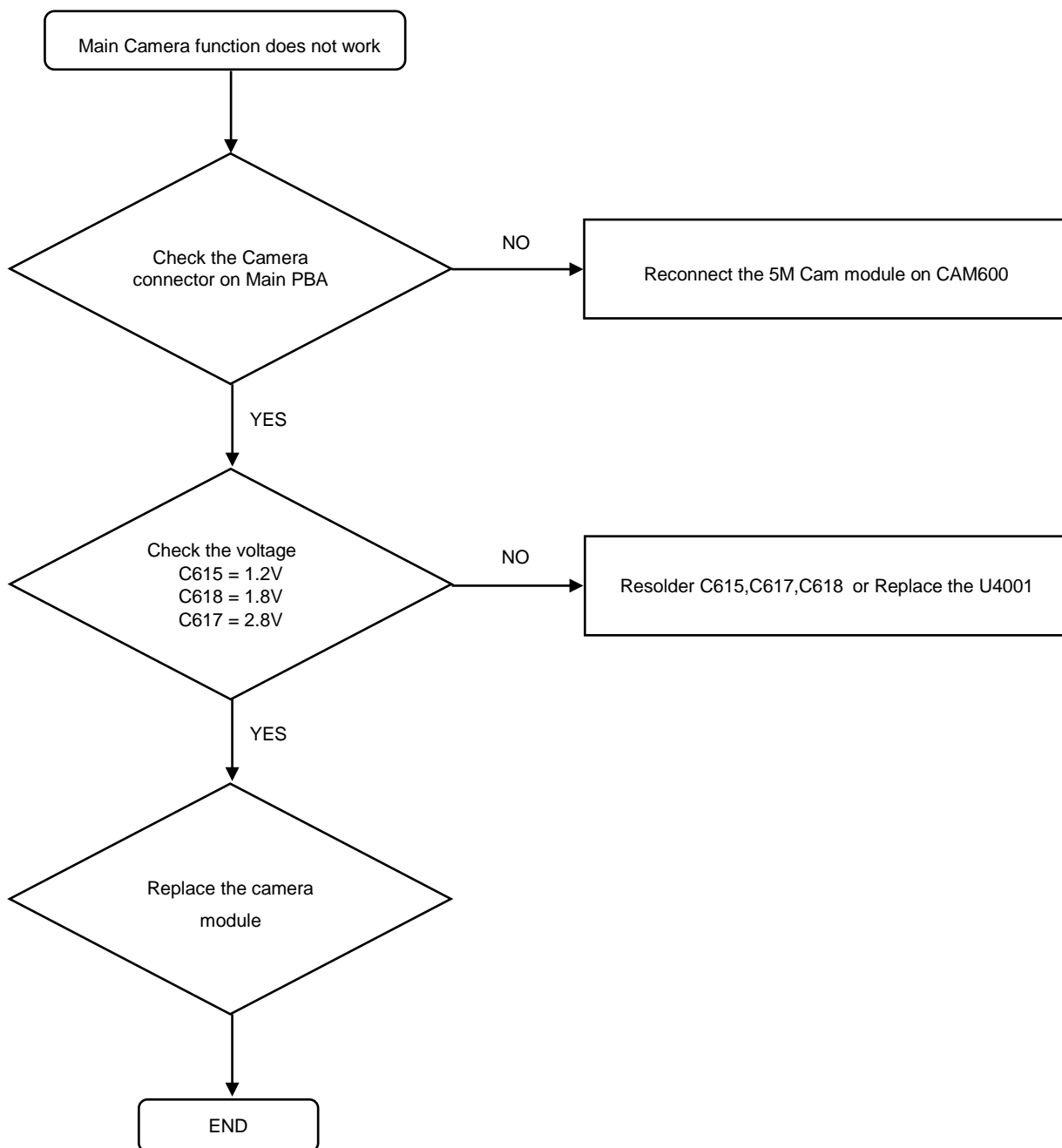
8. Level 3 Repair

8-4-10. TSP



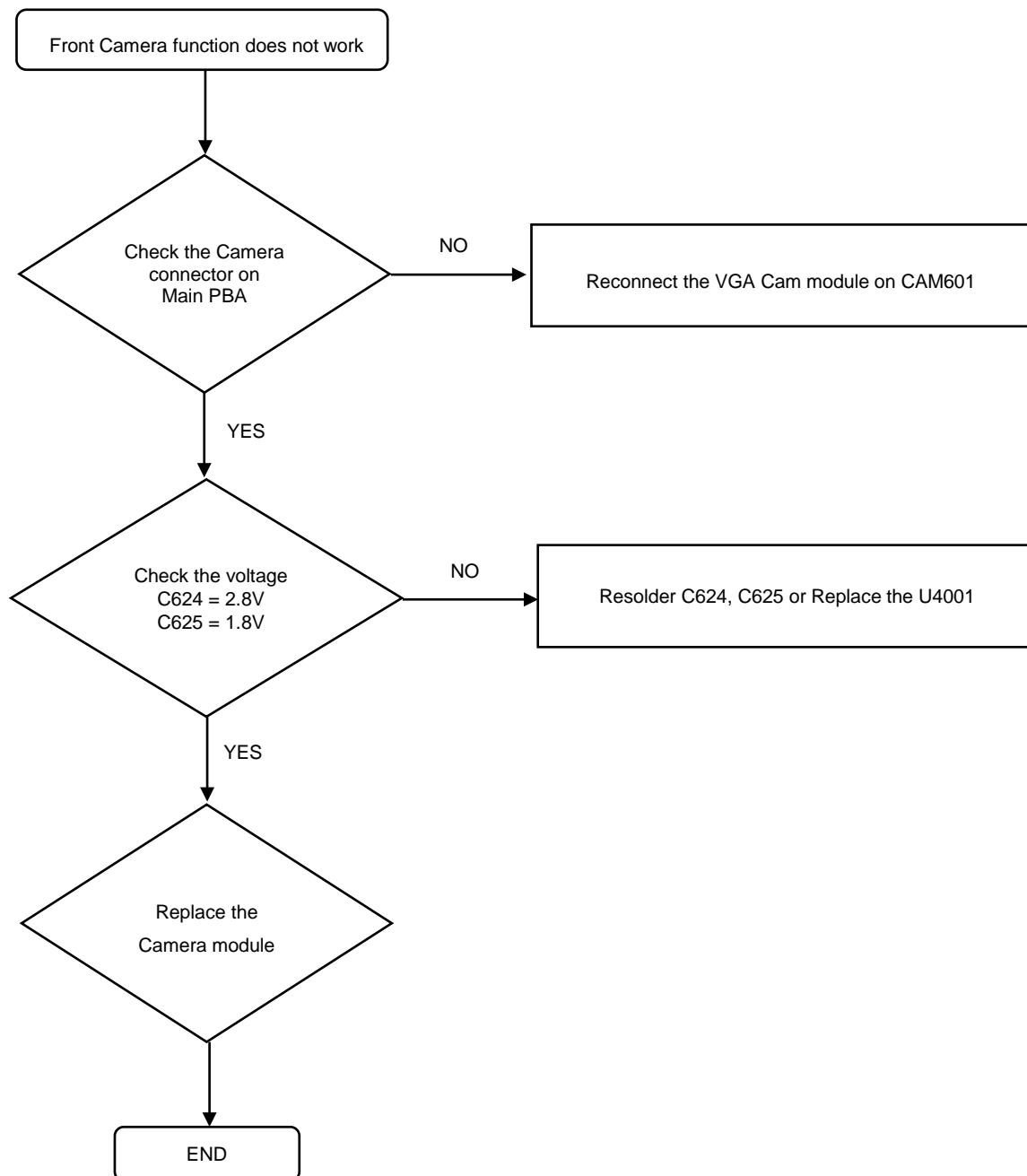
8. Level 3 Repair

8-4-11. 5M CAMERA



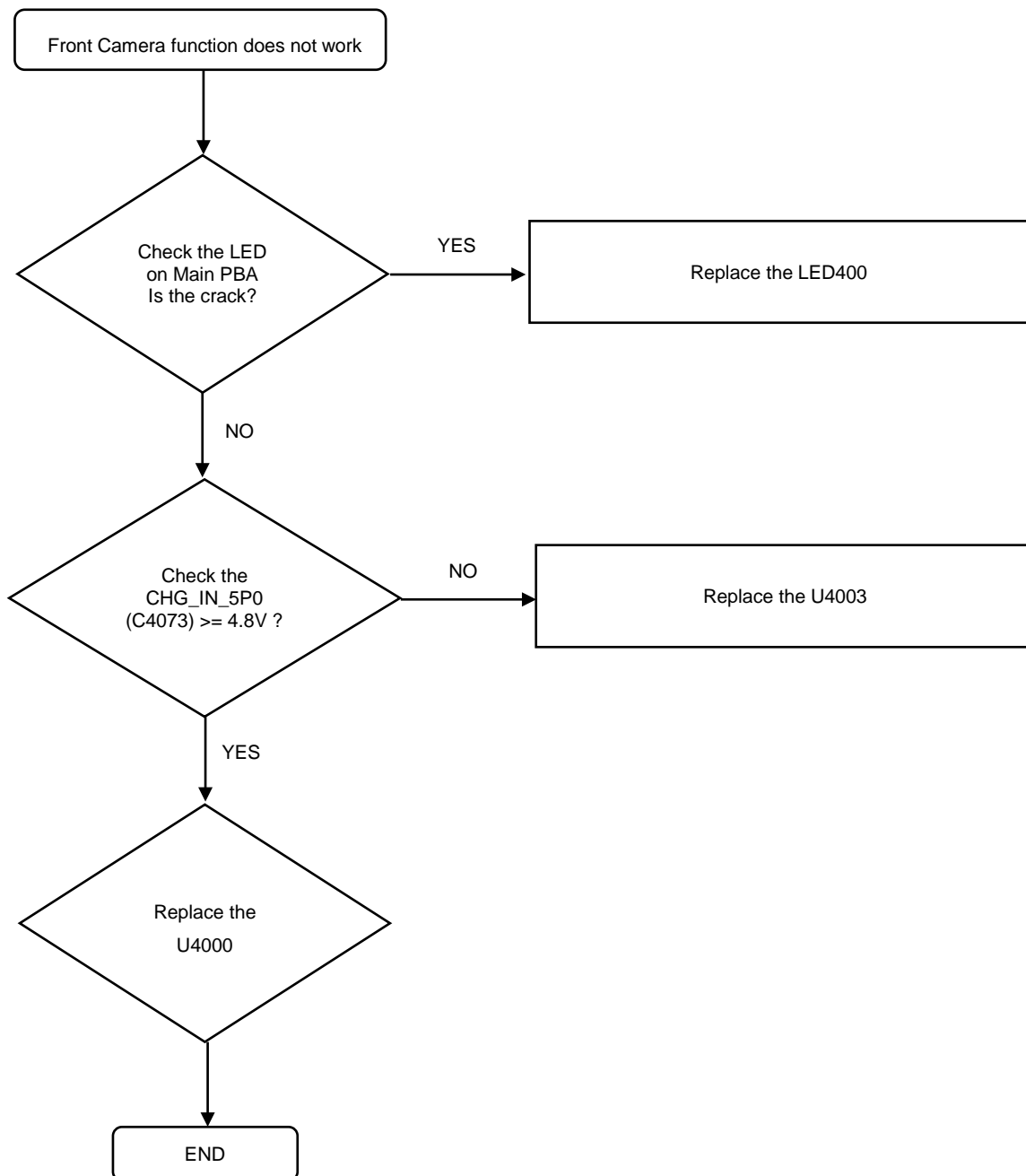
8. Level 3 Repair

8-4-12. VGA CAMERA



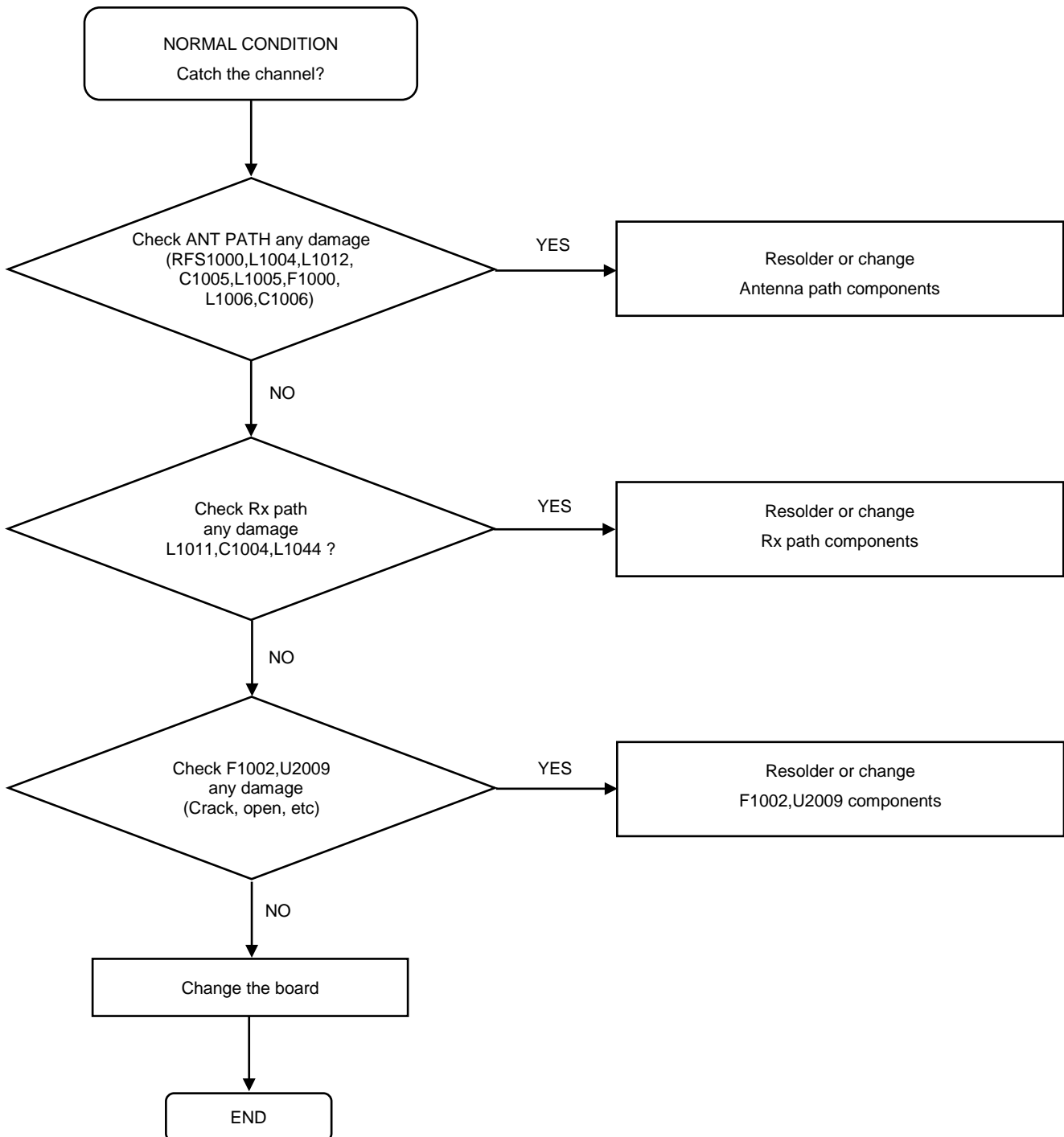
8. Level 3 Repair

8-4-13. Flash LED



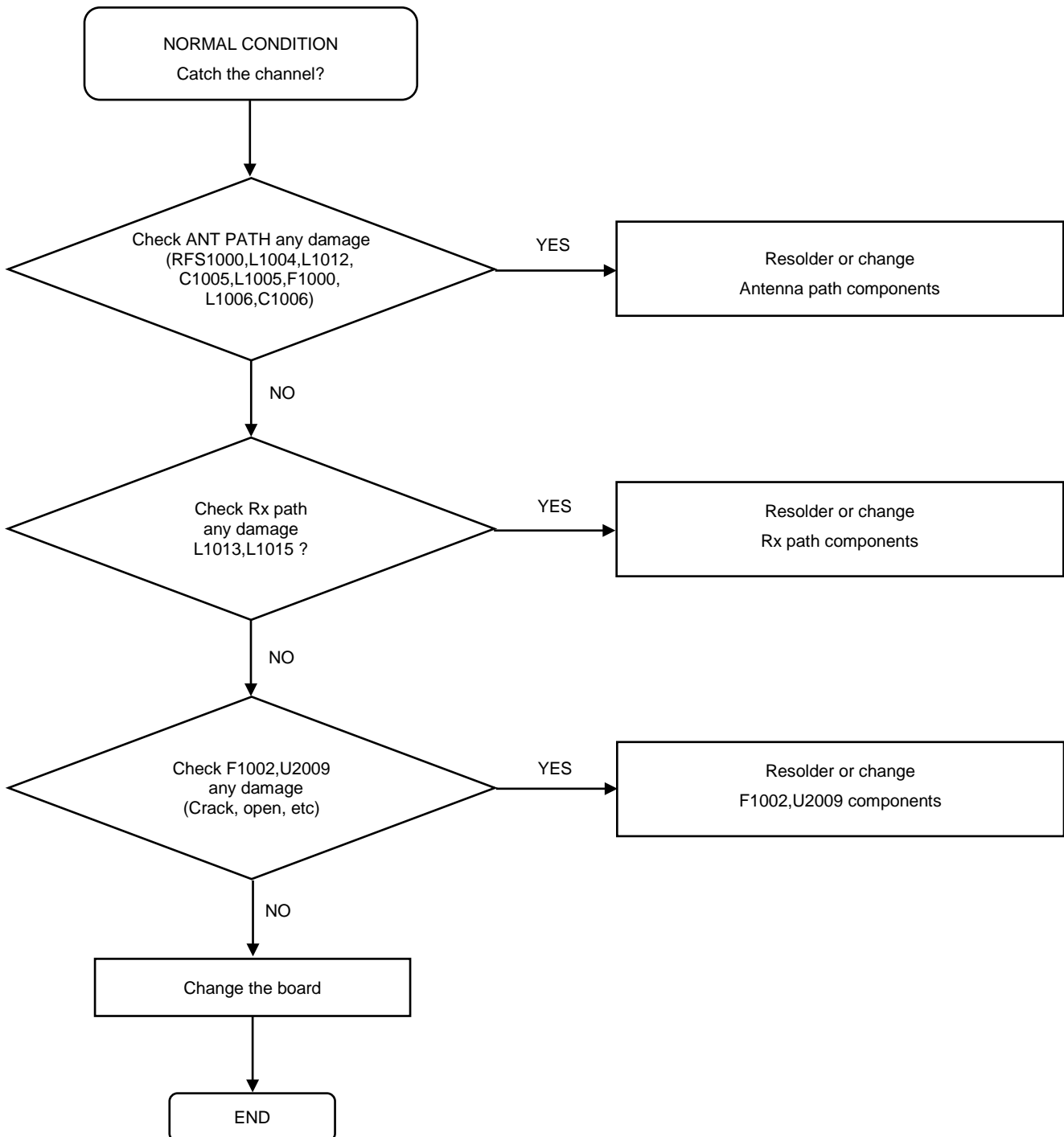
8. Level 3 Repair

8-4-14. WCDMA B1 / LTE B1 RX



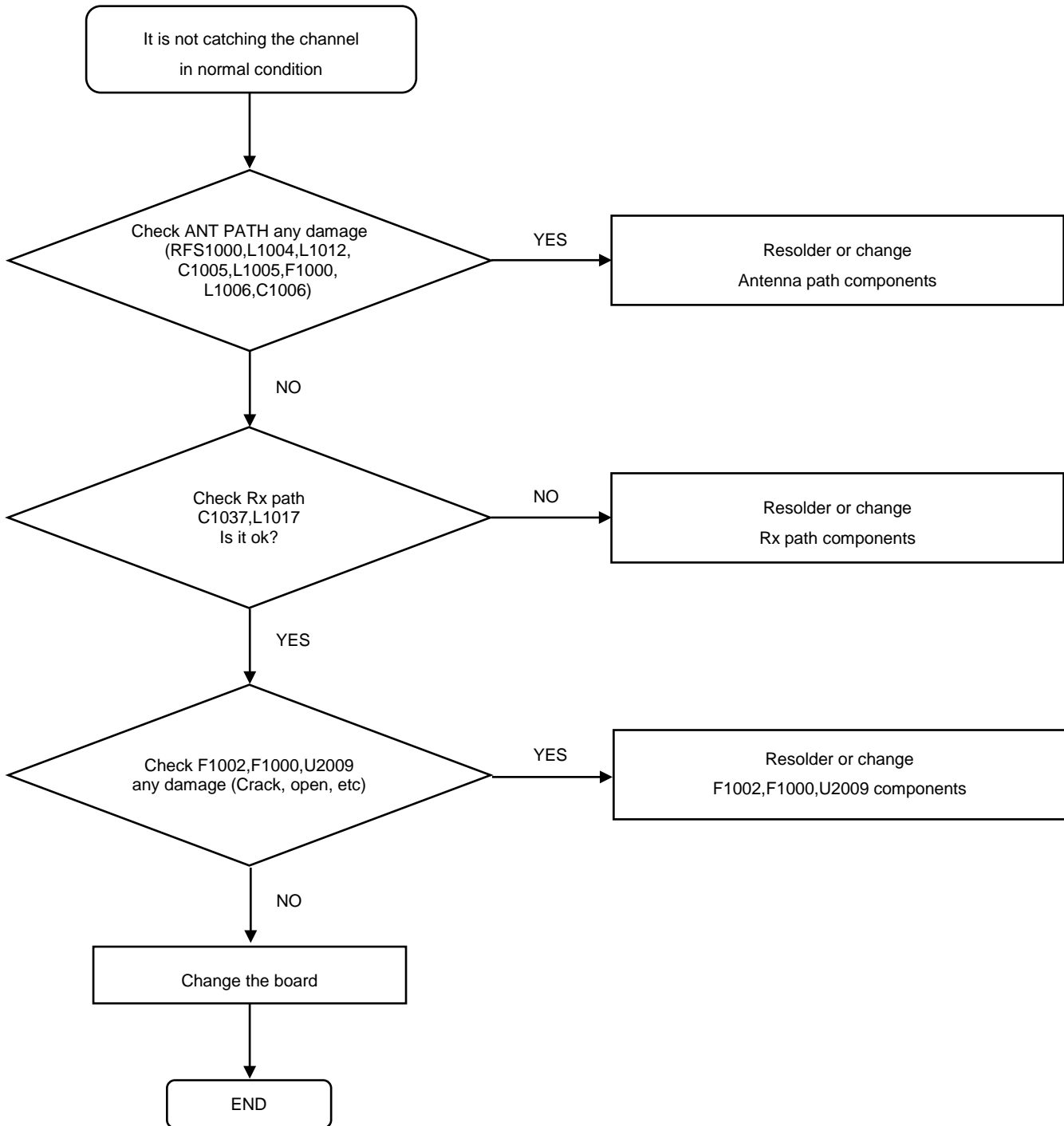
8. Level 3 Repair

8-4-15. GSM1900 RX



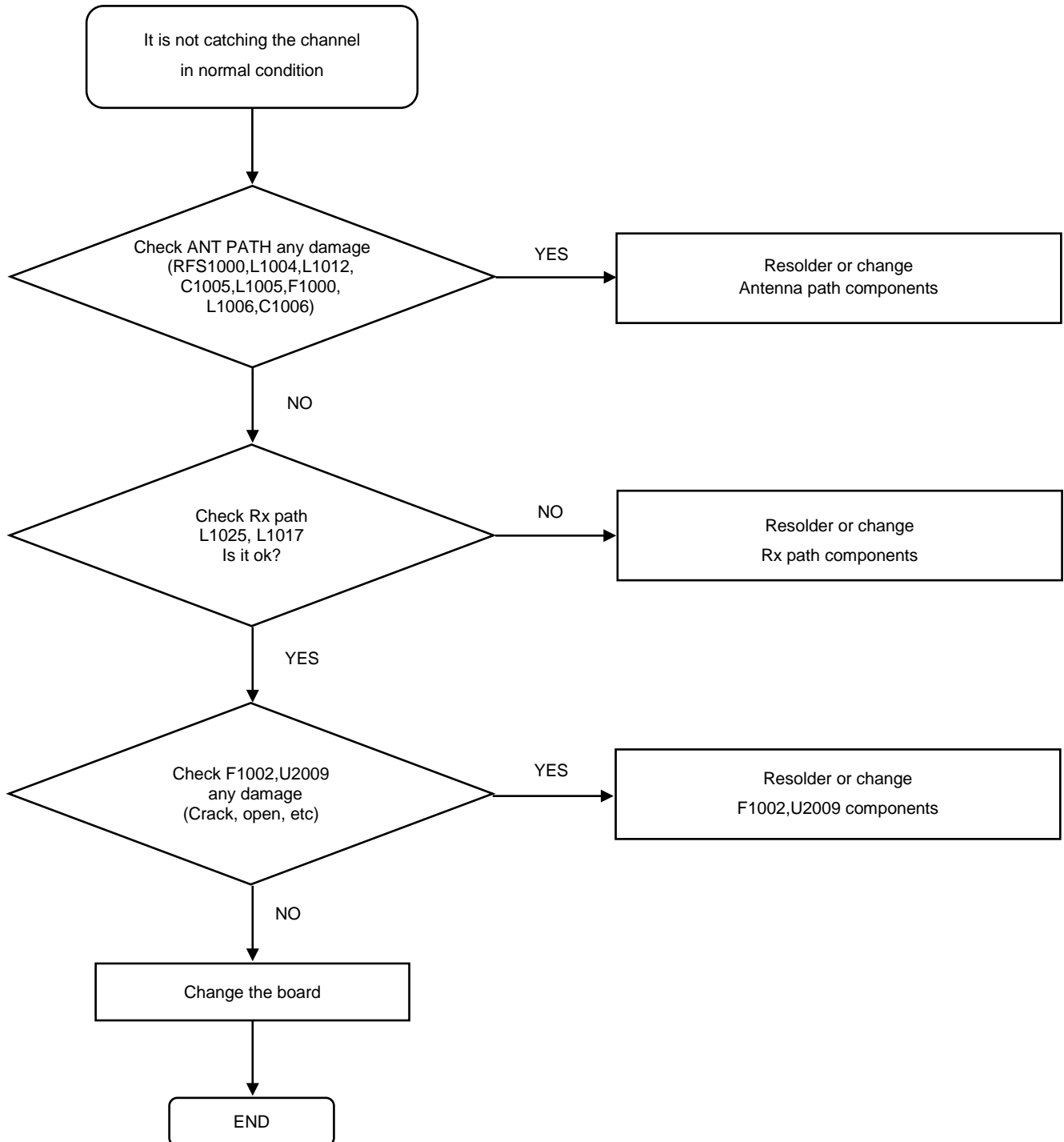
8. Level 3 Repair

8-4-16. GSM1800 / LTE B3 Rx



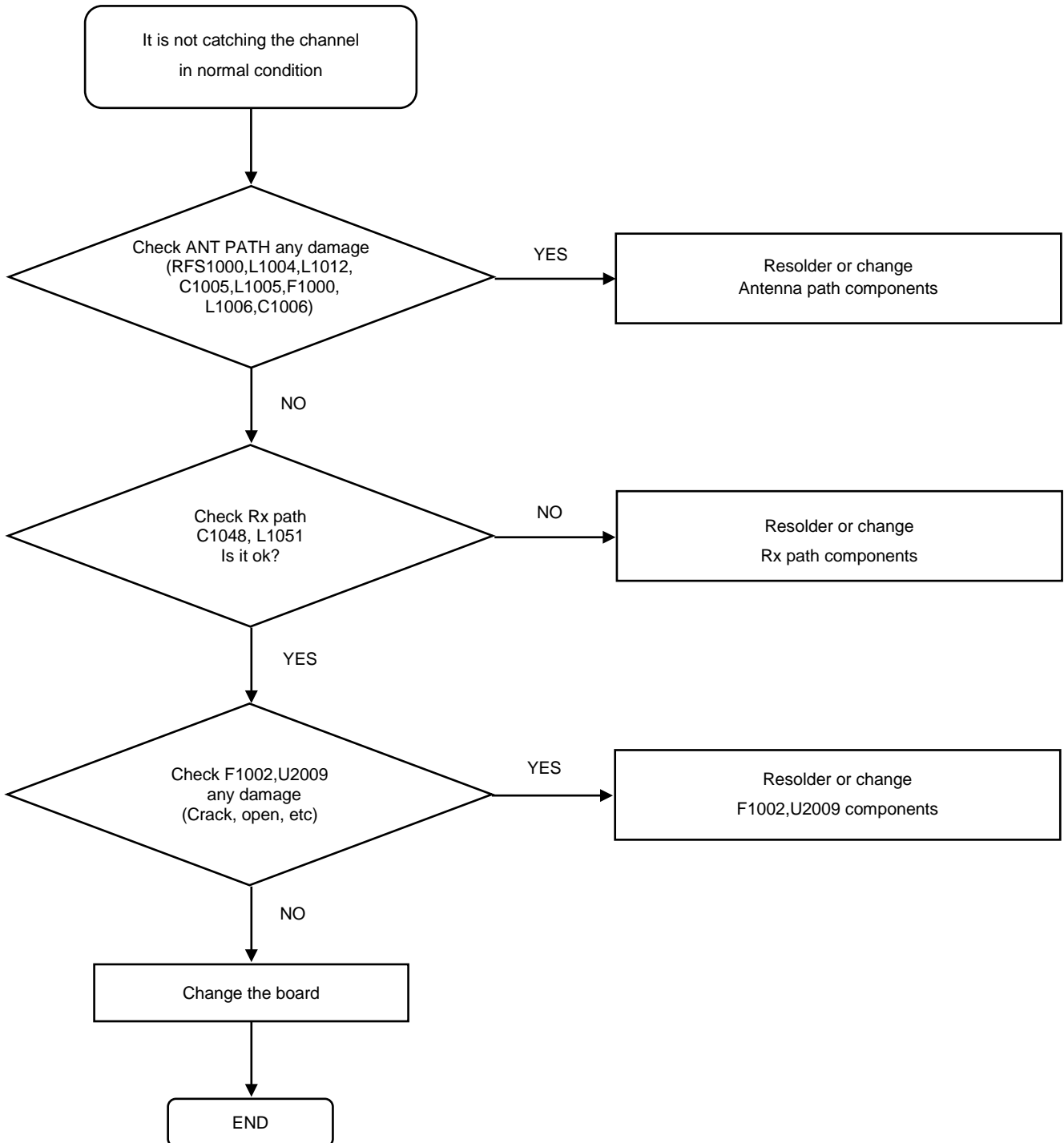
8. Level 3 Repair

8-4-17. GSM850 / WCDMA B5 / LTE B5 RX



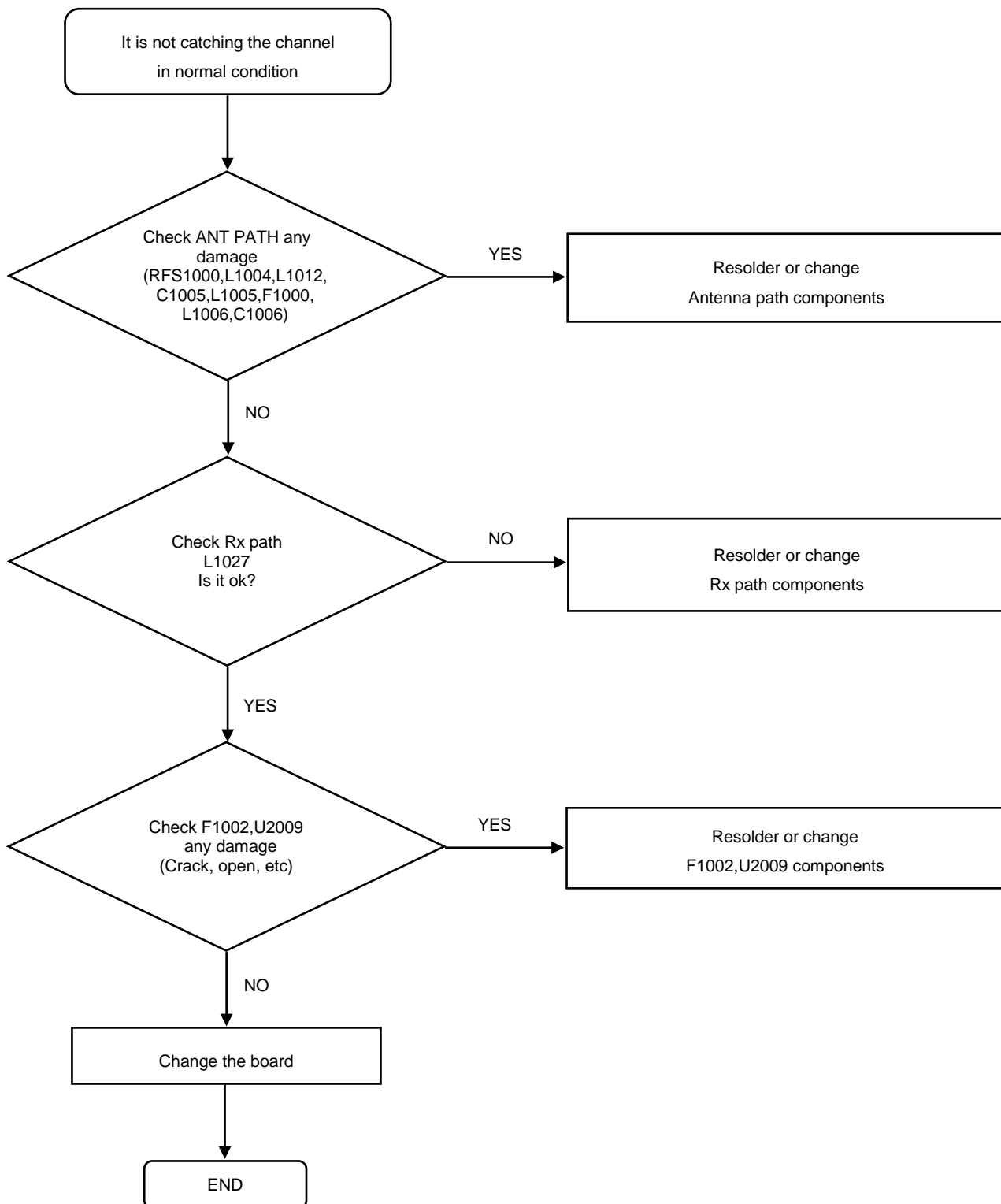
8. Level 3 Repair

8-4-18. LTE B7 RX



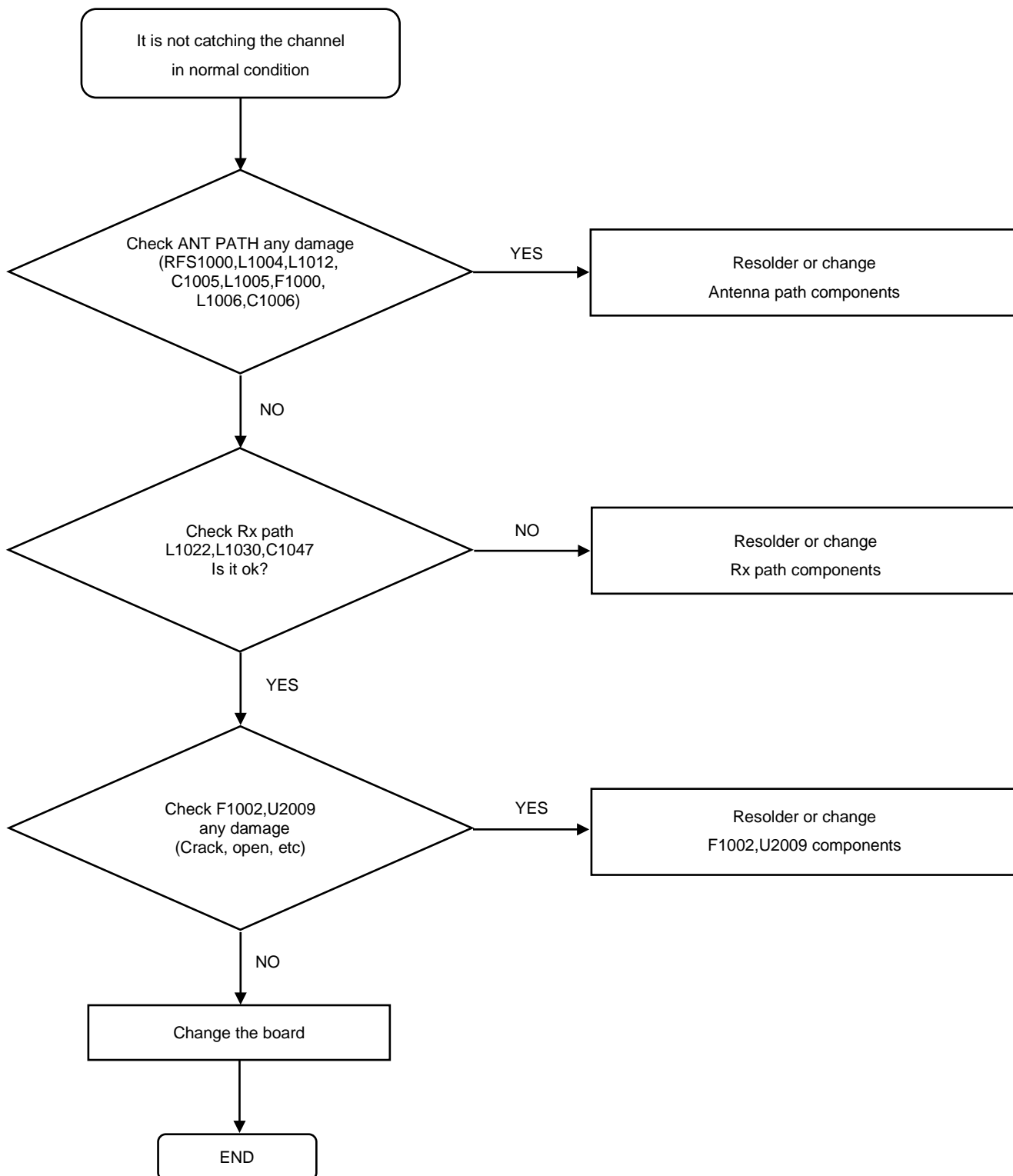
8. Level 3 Repair

8-4-19. GSM900 / WCDMA B8 / LTE B8 Rx



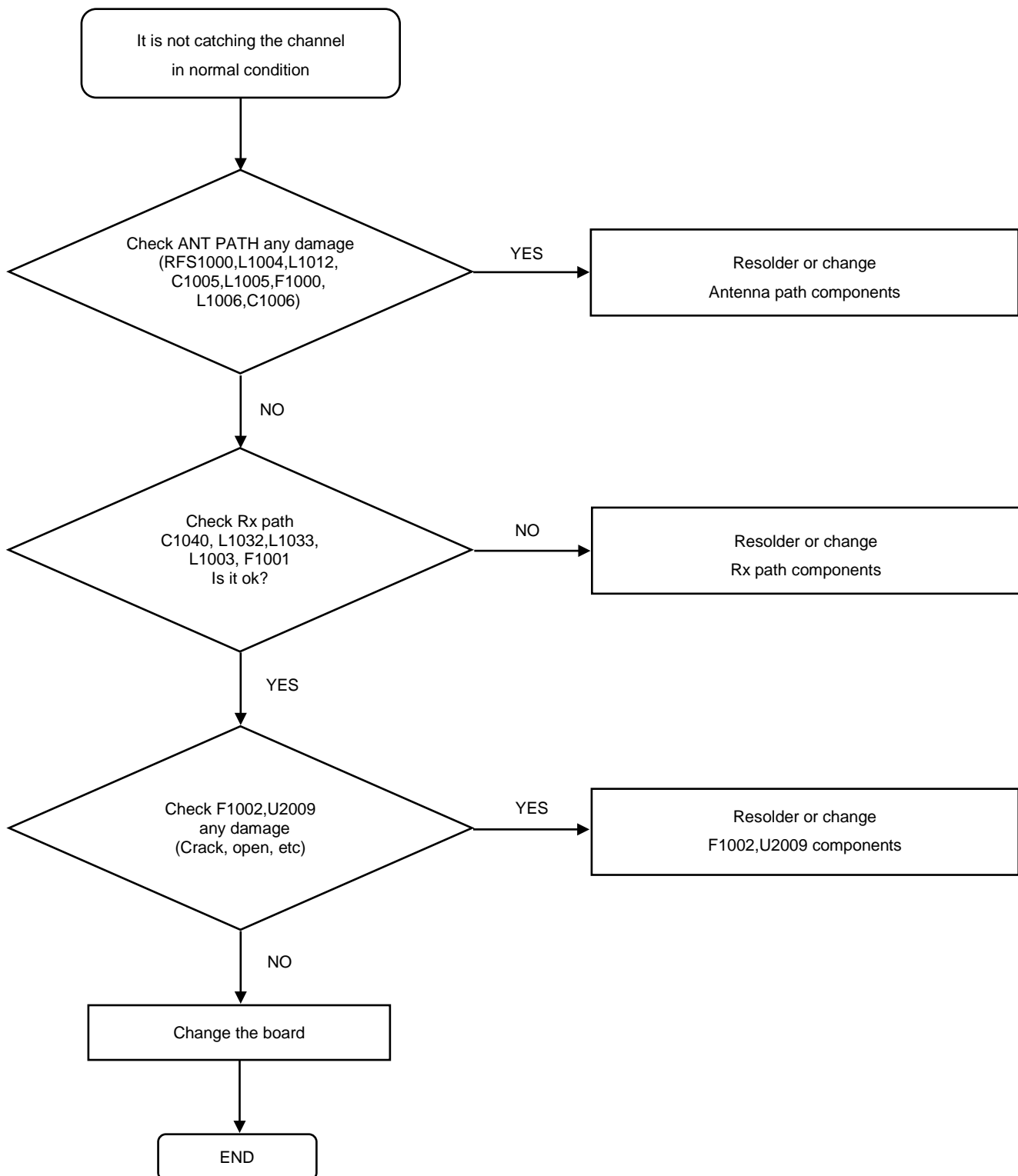
8. Level 3 Repair

8-4-20. LTE B20 RX



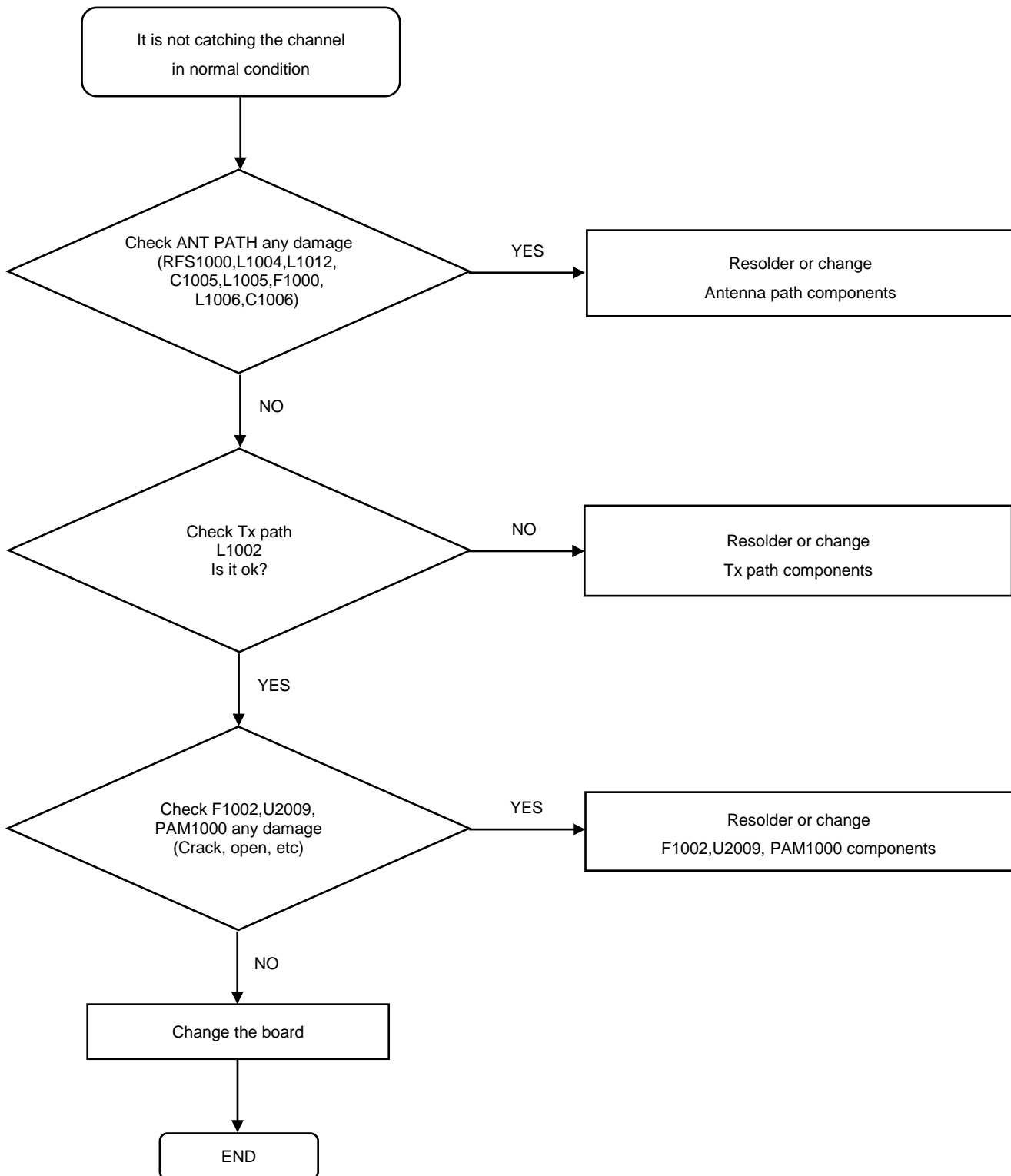
8. Level 3 Repair

8-4-21. LTE B40 RX



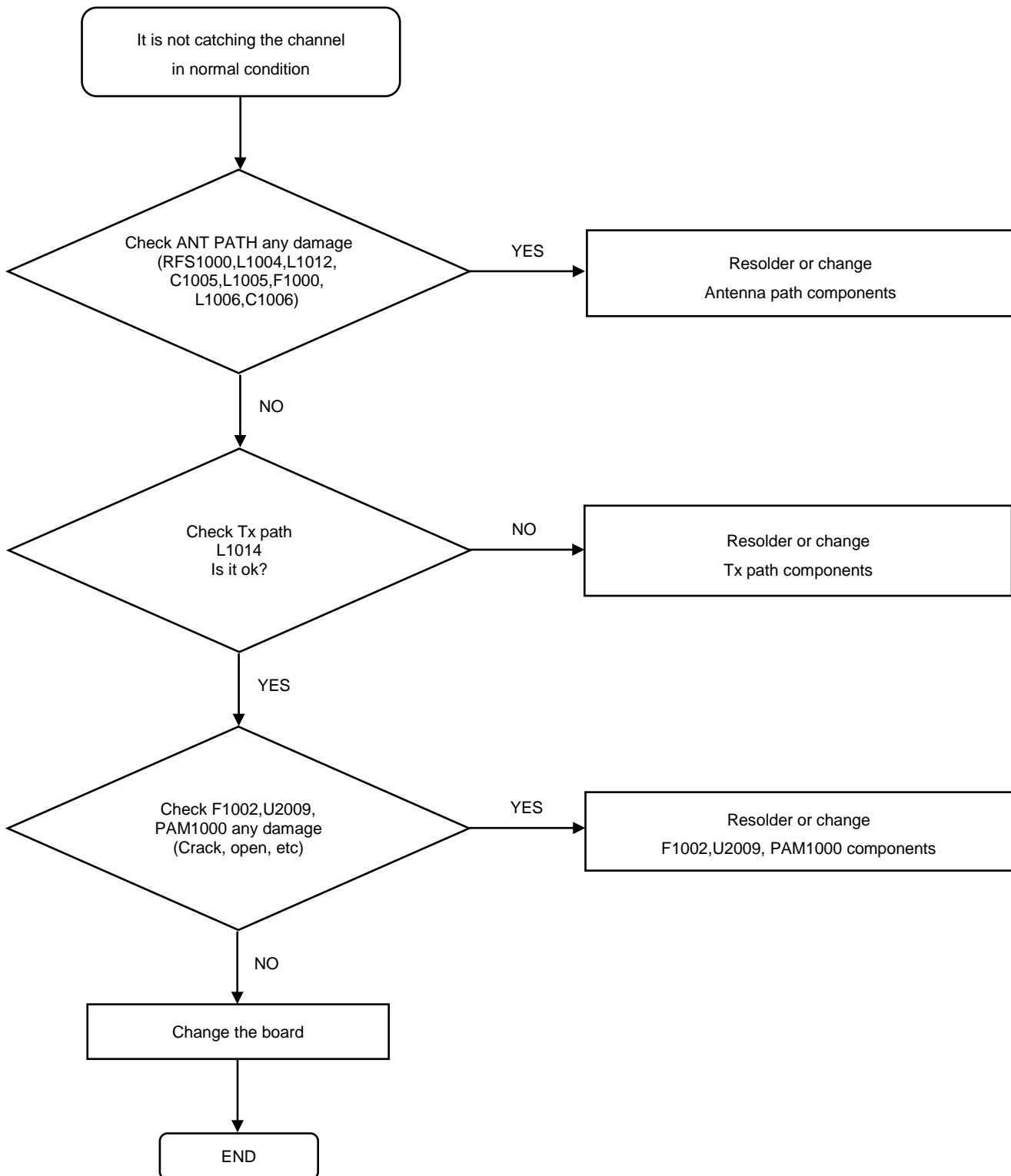
8. Level 3 Repair

8-4-22. GSM850 / GSM900 TX



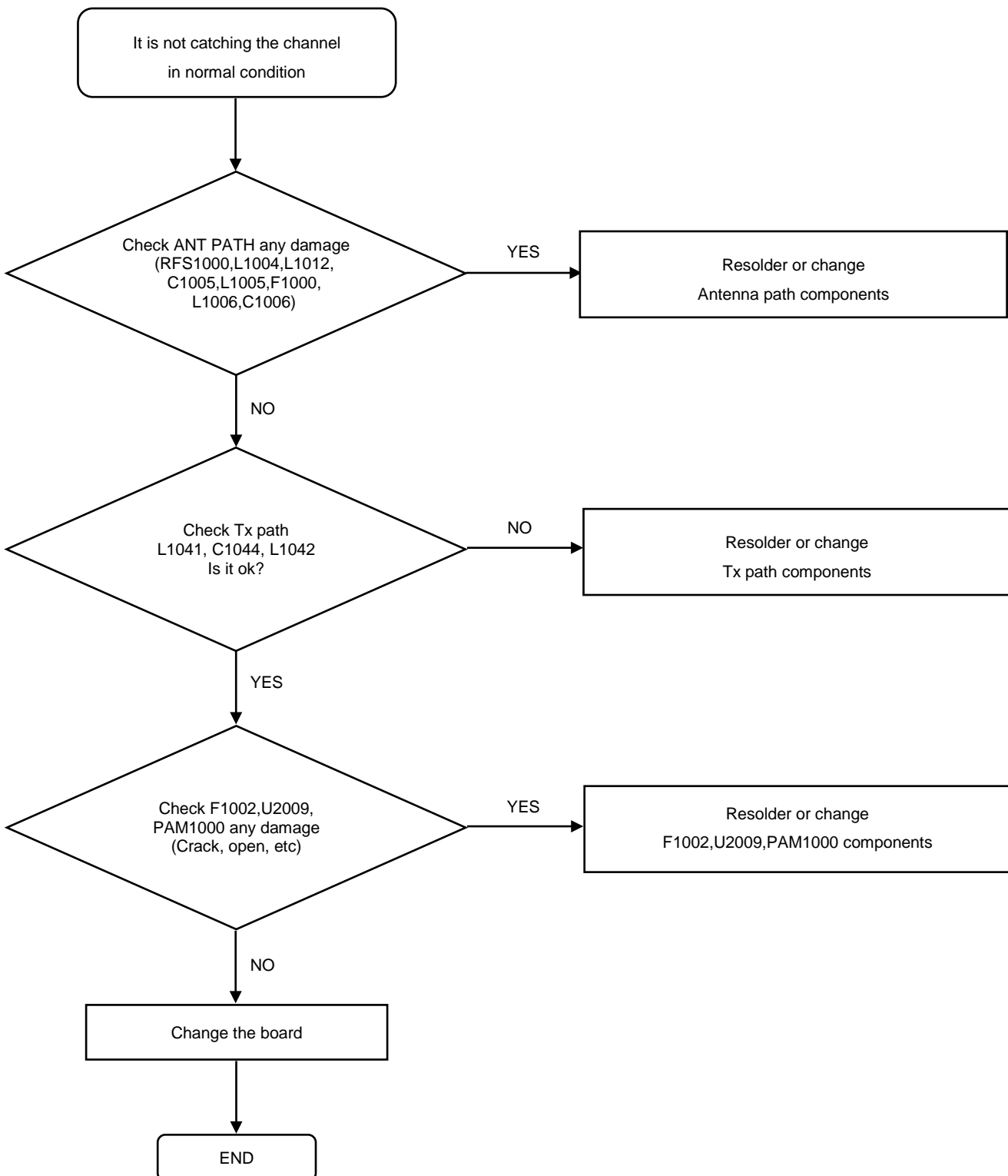
8. Level 3 Repair

8-4-23. GSM1800 / GSM1900 TX



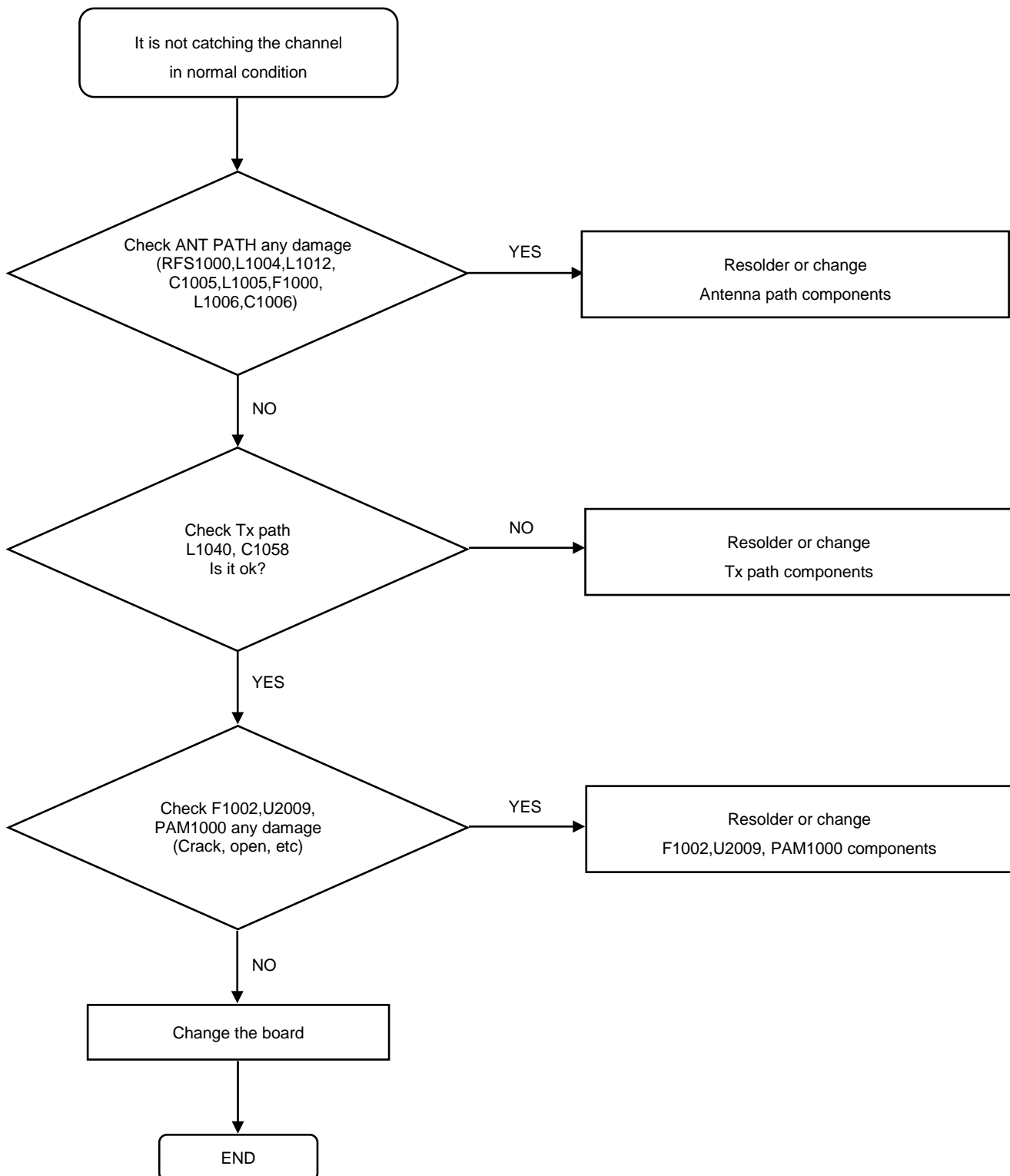
8. Level 3 Repair

8-4-24. WCDMA B1 / LTE B1 TX



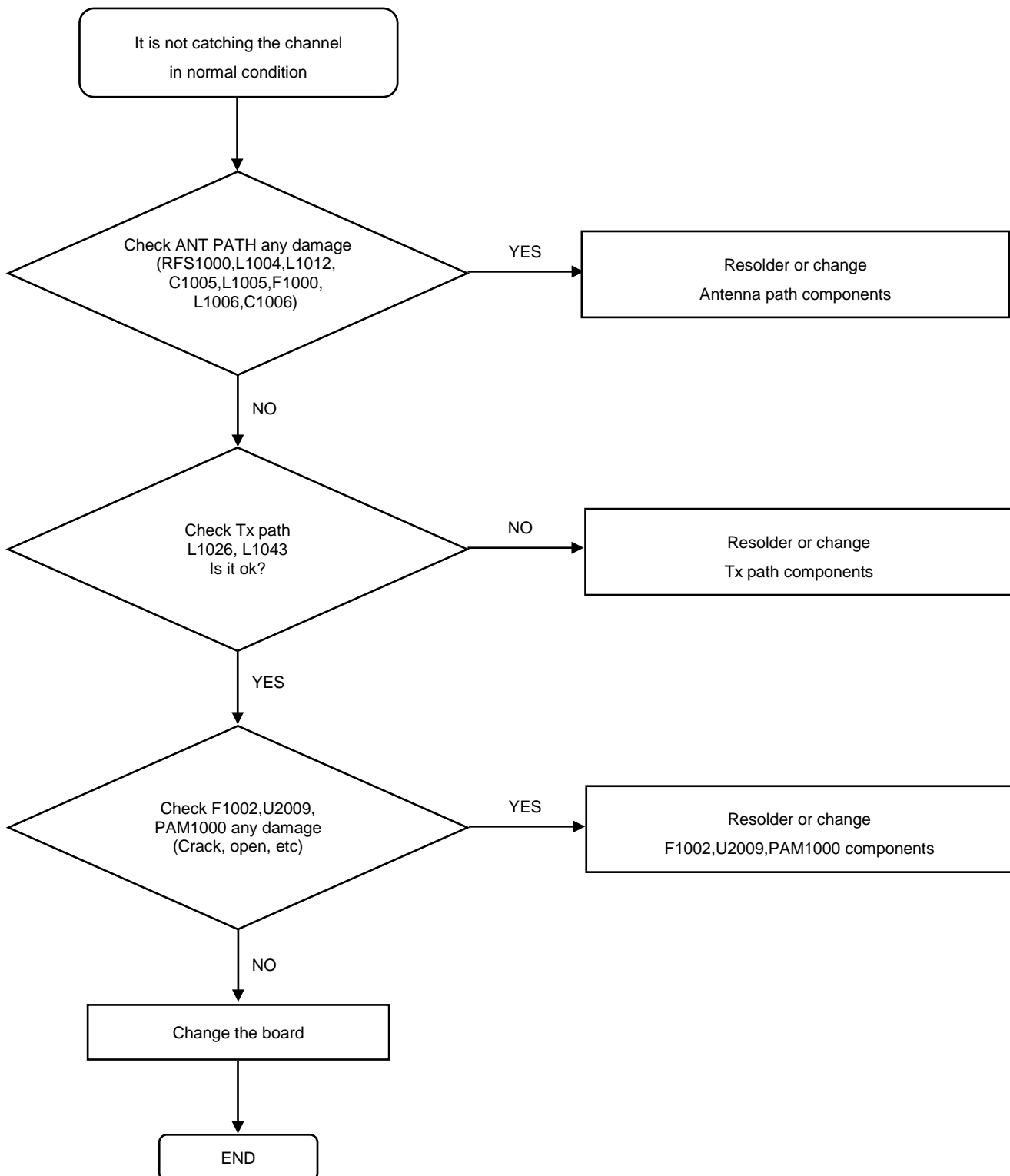
8. Level 3 Repair

8-4-25. LTE B3 TX



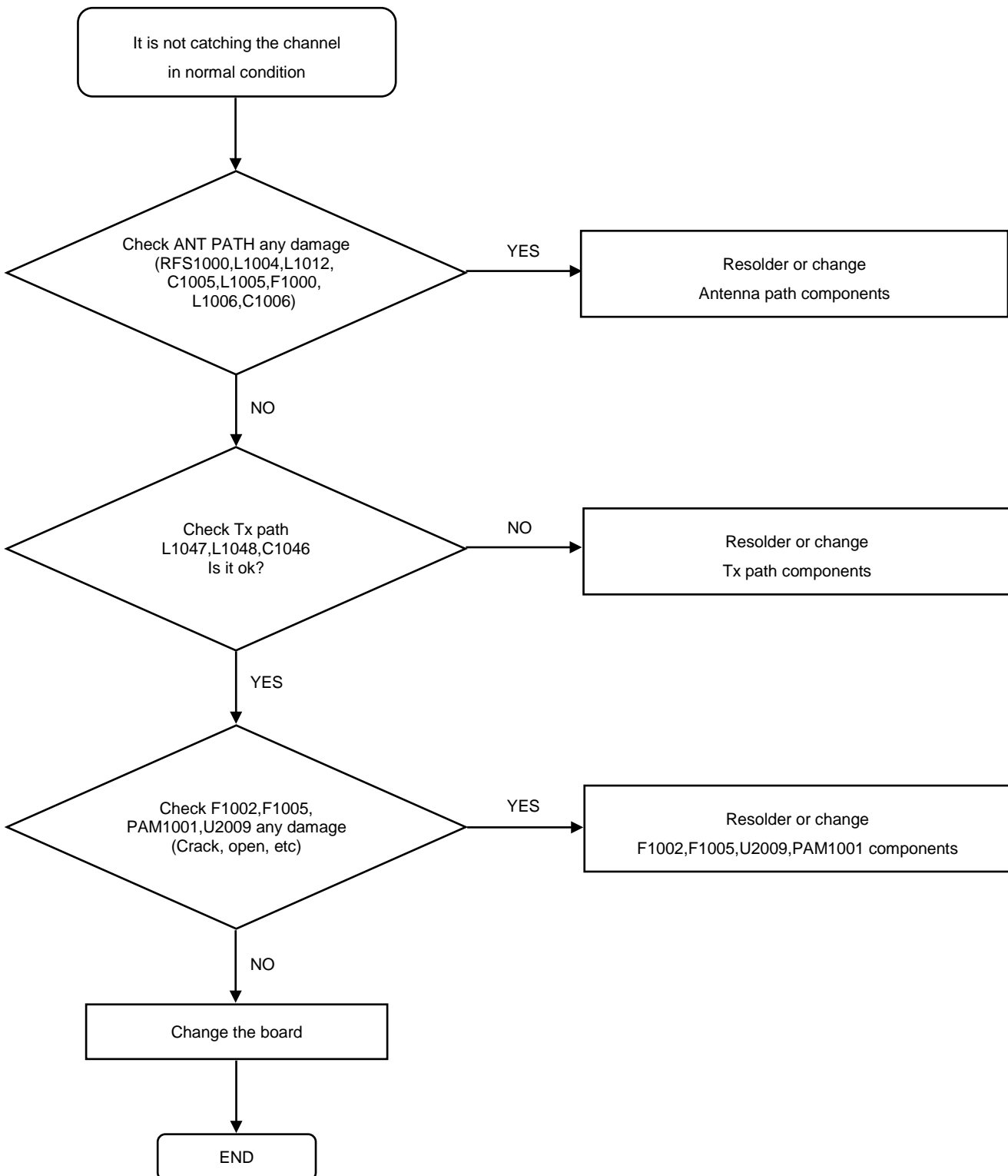
8. Level 3 Repair

8-4-26. WCDMA B5 / LTE B5 TX



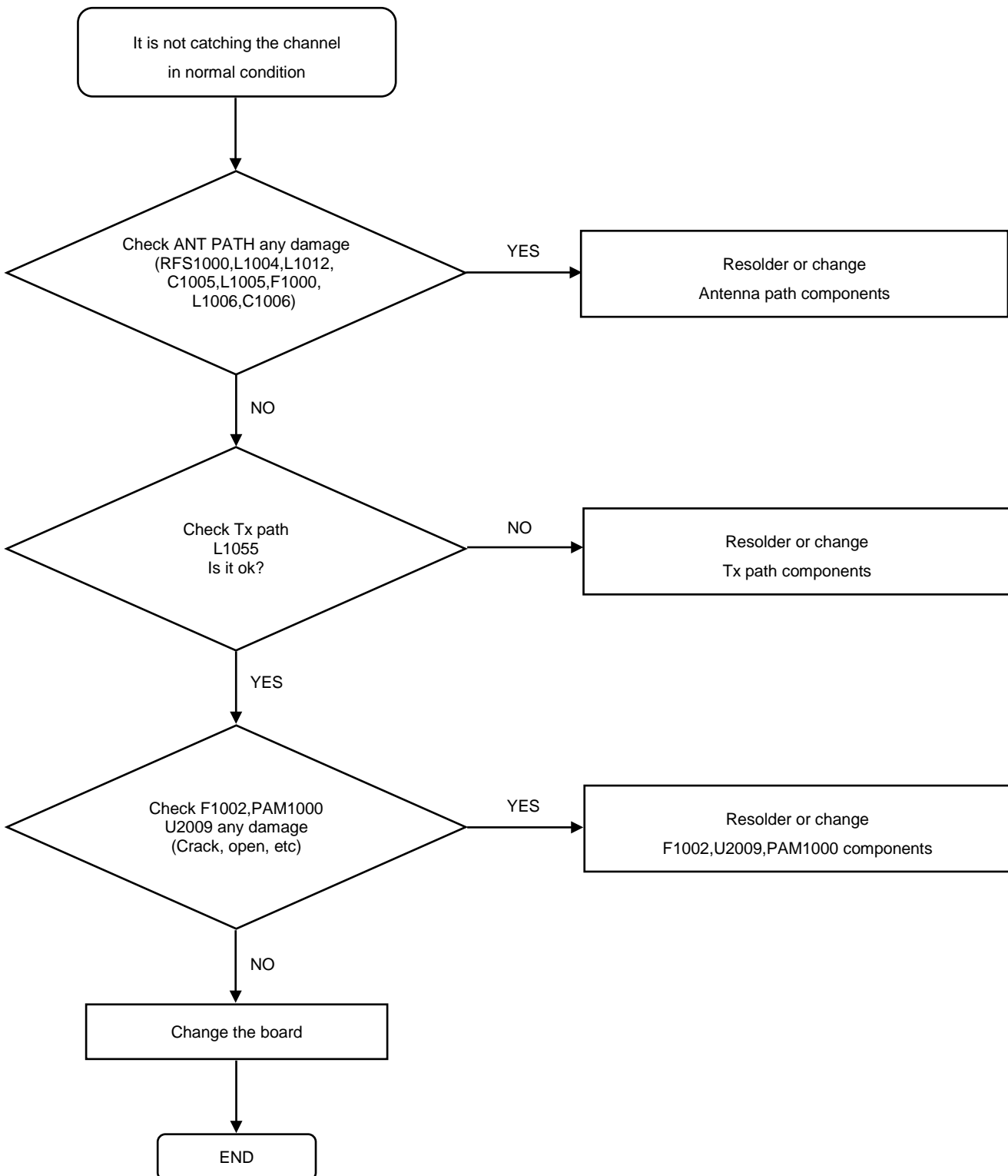
8. Level 3 Repair

8-4-27. LTE B7 TX



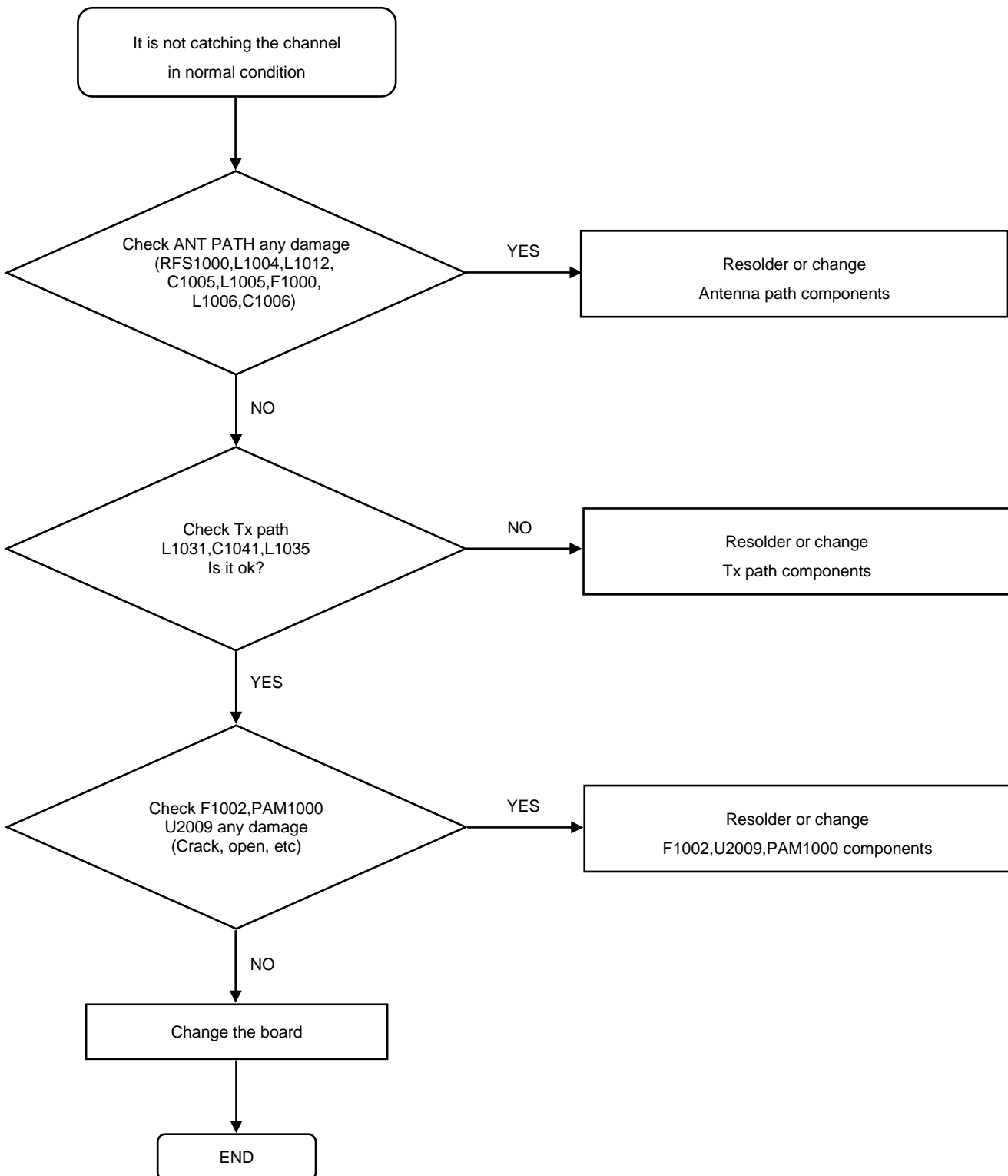
8. Level 3 Repair

8-4-28. WCDMA B8 / LTE B8 TX



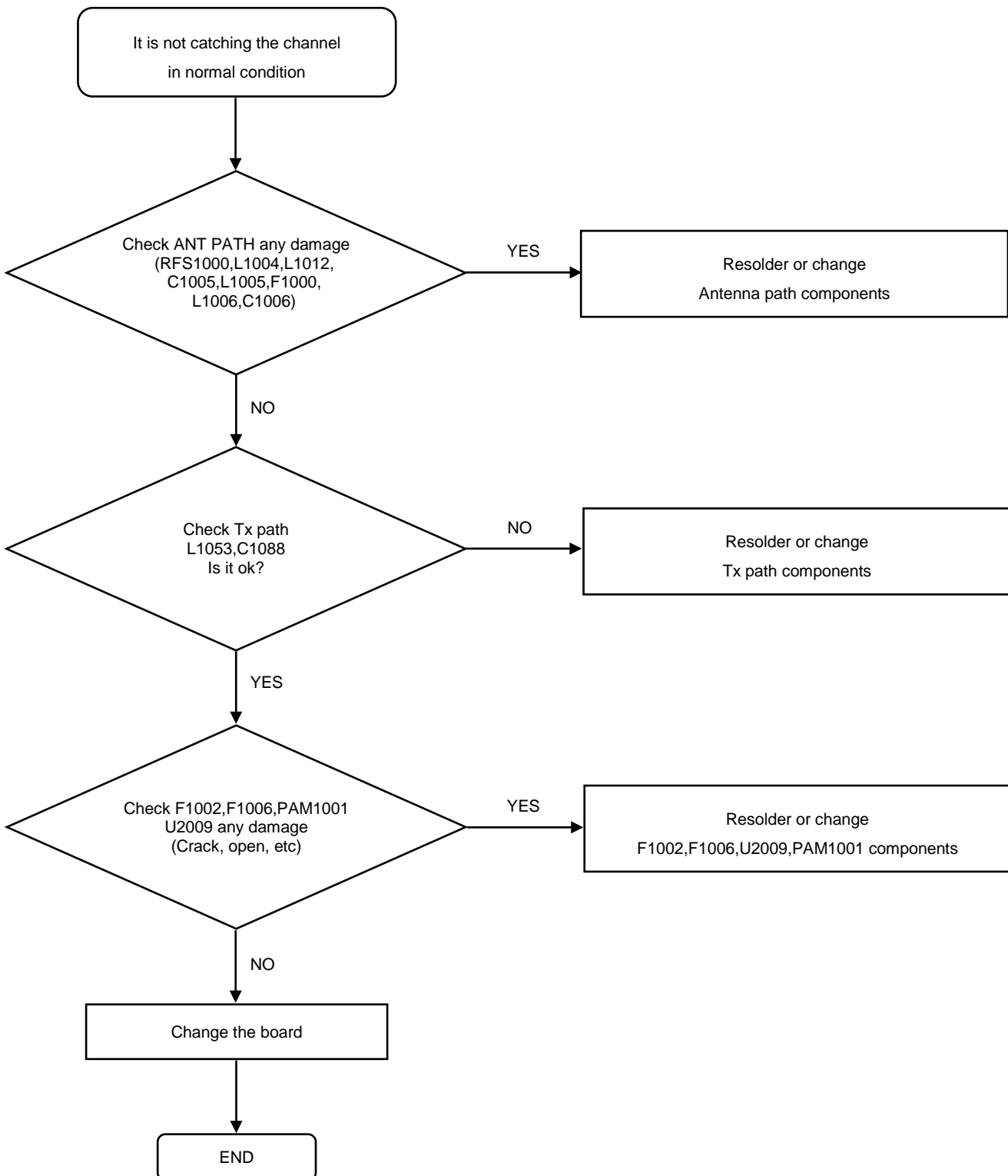
8. Level 3 Repair

8-4-29. LTE B20 TX



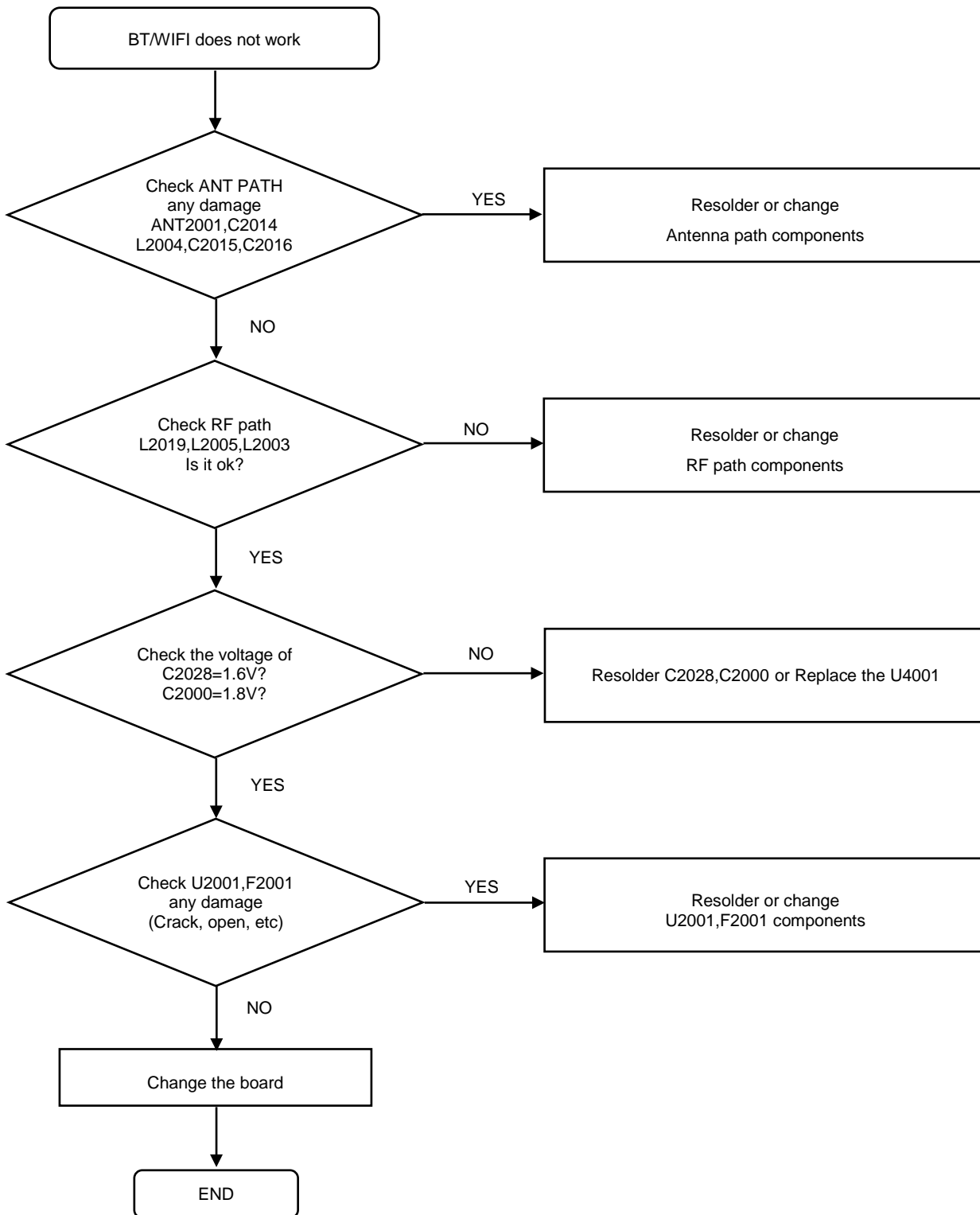
8. Level 3 Repair

8-4-30. LTE B40 TX



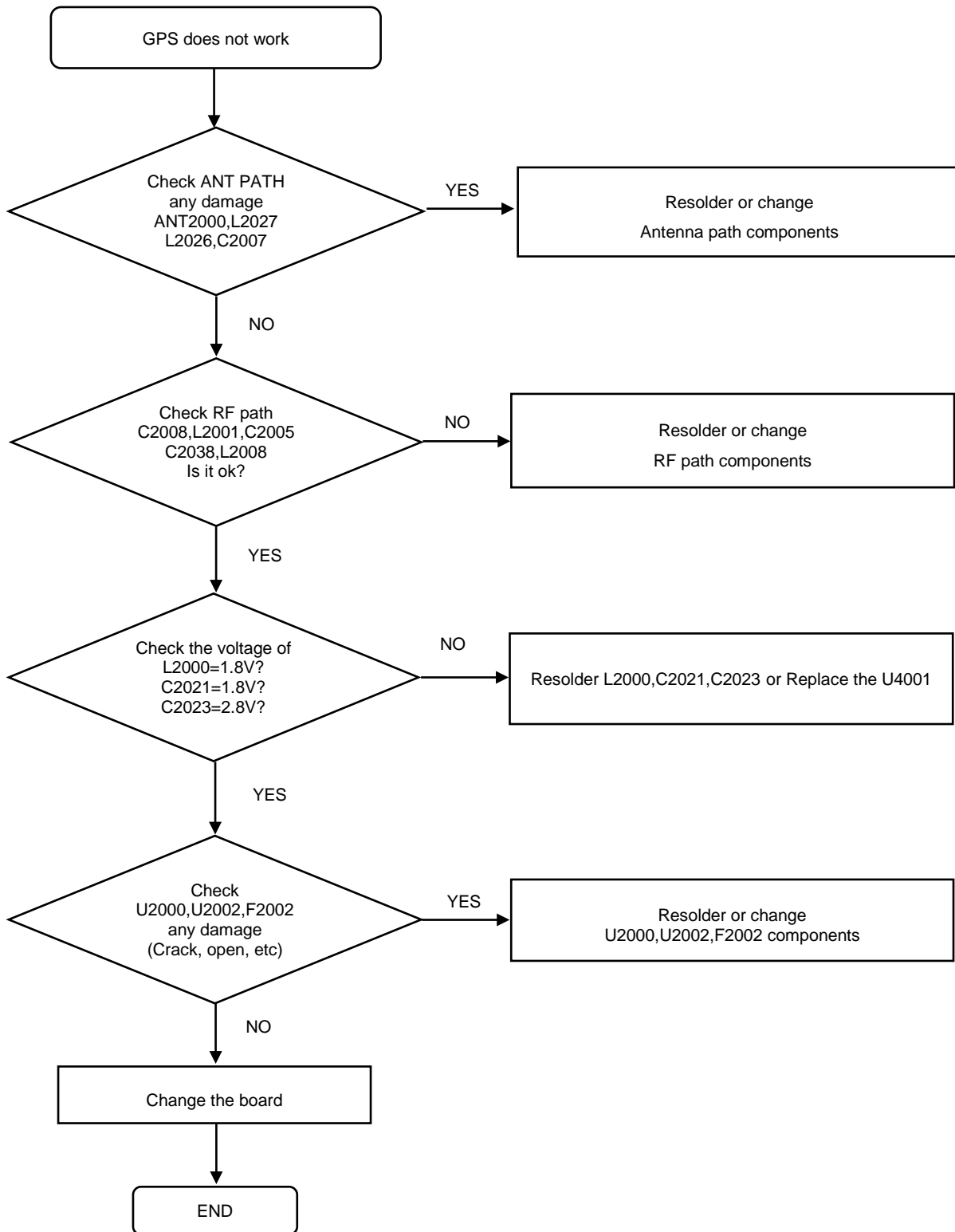
8. Level 3 Repair

8-4-31. BT/WLAN



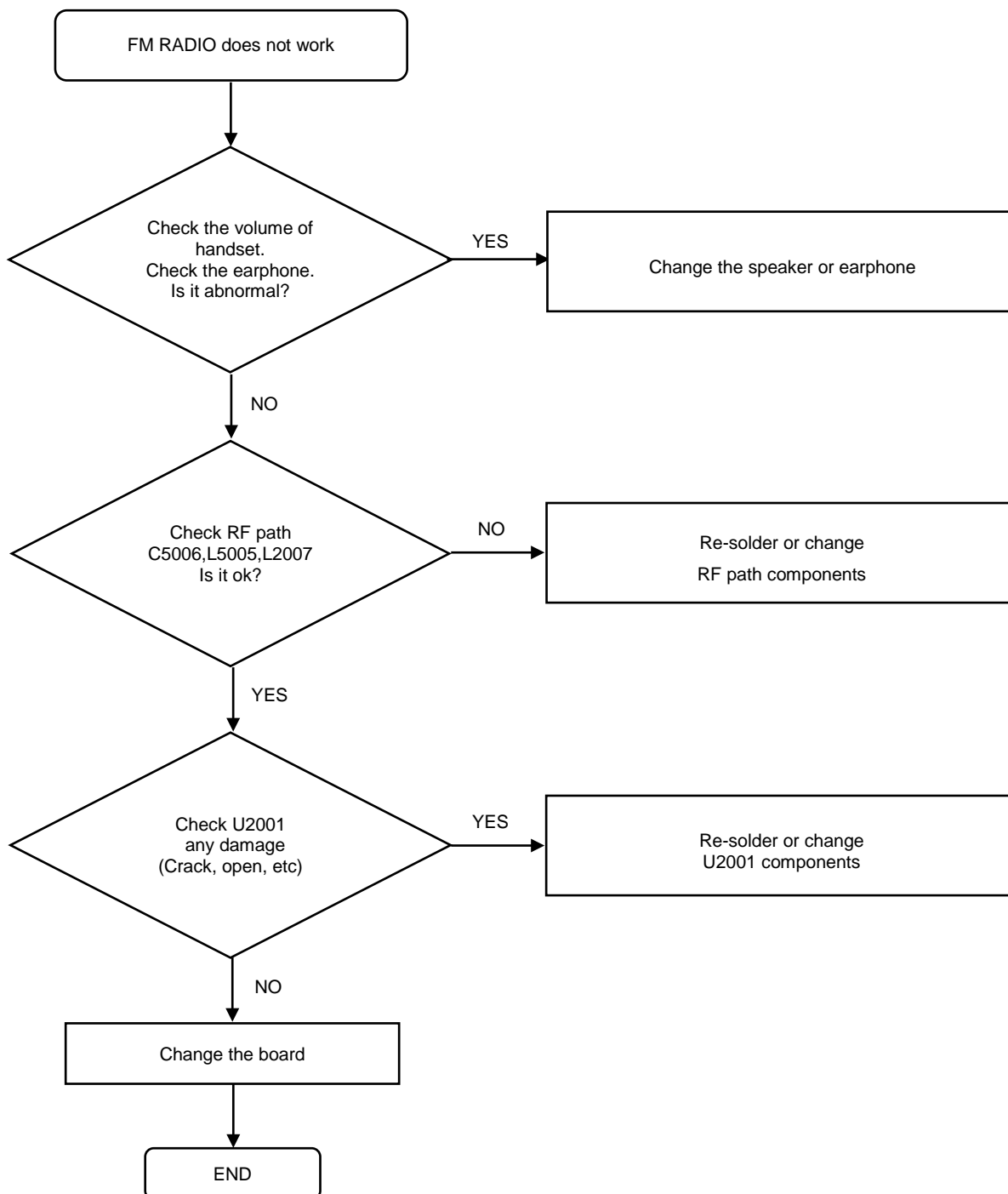
8. Level 3 Repair

8-4-32. GPS



8. Level 3 Repair

8-4-33. FM RADIO



8. Level 3 Repair

8-5. Service Schematics

- NC Point(Top View)
U3000 (AP)

	1	2	3	4	5	6	7	8	9	10	11	12	13	14	15	16	17	18	19	20	21	22	23	24	25	26	27	28	29			
A	EMSSQ	NC	EMC_D0		NFE[0]	NFE[1]		CAMCLK	CORP[0]		MCS0_DAT AP1	MCS0_DAT AN1		MCS0_REM MCS1_DAT T AP1		LIDS_CLK P	LIDS_CLK N		LIDS_DAT AP4	SPE_CSN		SPE_DO	SPE_CLK			MEM6_MC DATA1	NC	NC	A			
B	NC	EMSSQ	EMC_RST	SPDIO6	EMC_D4	NFE[0]	EMC_D1	NFE[0]	SDA0	MCS0_DAT AN0	MCS0_DAT AN0	MCS0_CLK AN0	MCS0_REM MCS1_DAT T AN1		LIDS_DAT AP3	LIDS_DAT AN0	LIDS_DAT AN0	LIDS_DAT AP3	LIDS_DAT AN4	SPE_DI	KEYOUT[1]	KEYOUT[0]	SPE_CSN	SPE_DO	SPE_DI	MEM6_MC DATA1	MEM6_MC CLK1	NC	B			
C	EMC[0]	EMC[0]		EMC_D0			EMC_D6	CORP[1]		SOLD	MCS0_DAT AP2	MCS0_DAT AN0		MCS1_CLK N	MCS1_CLK P			AVSS_LVD S				KEYIN[0]			SPE_CLK	MEM6_MC DATA1	SDA2	C				
D	EMC[0]	EMC[0]	EMC[0]	EMC_D3	EMC_D0		EMC_CLK	CMRST0	CMRST1	VCAM	MCS0_DAT AN0	MCS1_AN D	MCS1_DAT AP0	MCS1_DAT AN0				LIDS_DAT AP1	LIDS_DAT AN1		CLKDR[0] NE0		KEYOUT[0]		EXTINT0	SDA3	SOL3	SOL2	CLK_AVG D	D		
E	EMSSQ			EMC[0]	EMC_D6		EMC_D7	CAMPCLK	CAMP0		MCS0_DAT AP3							LIDS_DAT AP2	LIDS_DAT AN2				VCC	KEYIN[0]	KEYIN[0]	EXTINT1	RFSCK0	RFSDA0	RFC[0][5]	E		
F	EMC[0]	EMC[4]	EMC[0]	EMC[0]			NFE[0]	CMPD0	VSS							AVSS_LVD S		AVDD_PLL		AVSS_PLL		VO1		RFSEN0	RFSDA1	RFC[0][2]		RFC[0][6]	F			
G	EMC[0]		EMC[0]				VNF1				MCS1_AD D	MCS1_AN D		AVDD_LVD S			CLKDR[0] NE0			CLKDR[0] NE1			VSS		RFC[0][9]			RFC[0][8]	RFC[0][8]	G		
H	EMSSQ	EMC[0]	EMC[4]	EMSSQ																					RFSCK1	RFC[0][7]	RFC[0][4]	RFC[0][5]	RFC[0][5]	H		
J	EMC[0]			EMC[0]	EMSSQ																				RFSEN1	RFC[0][8]	RFC[0][1]	RFC[0][1]	J			
K	EMC[0]		EMC[0]	EMC[0]	EMSSQ						VSS	VSS	IDD CORE	IDD CORE	IDD CORE	IDD CORE	IDD CORE	VSS	VSS						RFC[0][1]	RFC[0][1]	RFC[0][1]	RFC[0][1]	RFC[0][1]	K		
L	EMC[0]	EMC[0]	EMC[0]								IDD MEM	IDD MEM	VSS	VSS	VSS	VSS	IDD CORE	IDD CORE	IDD CORE	IDD CORE	IDD CORE	IDD CORE			RFC[0][0]			RFC[0][1]	RFC[0][1]	L		
M	EMSSQ			EMSSQ							IDD MEM	VSS	VSS	VSS	VSS	VSS	IDD CORE	IDD CORE	IDD CORE	IDD CORE	IDD CORE			VO1	RFC[0][0]	RFC[0][2]	RFC[0][3]	RFC[0][3]	M			
N		EMC[0]		EMC[0]	EMSSQ						IDD MEM	VSS	VSS	VSS	VSS	VSS	IDD CORE	IDD CORE	IDD CORE	IDD CORE	VSS			RFC[0][0]	XTL_EN	RFE_SDA 0	RFC[0][4]	RFC[0][1]	N			
P	EMC[0]			EMC[0]							IDD MEM	VSS	VSS	IDD CORE	VSS	VSS	IDD CORE	IDD CORE	IDD CORE	IDD CORE	VSS			AVDD_AFC	SEC_TMP	SEC_TAN		RFC[0][0]	IDD CAP	P		
R	EMC[0]	EMC[0]	EMC[0]	EMC[0]	EMC[0]	EMC[0]	EMC[0]	EMC[0]	EMC[0]		IDD MEM	VSS	VSS	IDD CORE	VSS	VSS	IDD CORE	IDD CORE	IDD CORE	IDD CORE	VSS			SEC_TAN			RFE_SDA 0		R			
T	EMSSQ			CLKDR[0]	CLKDR[0]	EMC[0]					IDD MEM	IDD CORE	IDD CORE	IDD CORE	VSS	VSS	VSS	IDD CORE	IDD CORE	IDD CORE	VSS			NC	NC	SEC_TAN	SEC_RAN	SEC_RAN	SEC_RAN	T		
U		EMC[0]	EMC[0]								IDD MEM	IDD ARM	IDD ARM	IDD ARM	VPB_ARM N	VSS	VSS	VSS	IDD CORE	IDD CORE	VSS			AVDD_SB	AVSS_SB		MAN_RAN	SEC_RAN	APCOUT1	APCOUT1	U	
V	EMC[0]	EMC[0]			EMC[0]						IDD MEM	IDD ARM	IDD ARM	IDD ARM	VPB_ARM N	VSS	VSS	VSS	IDD CORE	IDD CORE	VSS				MAN_RAN P	MAN_RAN		MAN_DIV_RAN		V		
W	EMC[0]	EMC[0]		EMC[0]	EMC[0]						EMDD_PL L	IDD MEM	IDD ARM	IDD ARM	IDD ARM	VSS	VPB_CORE N	VPB_CORE	IDD CORE	IDD CORE	VSS				MAN_RAN N			MAN_DIV_RAN		W		
Y			EMC[0]	EMC[0]							IDD MEM	IDD ARM	IDD ARM	IDD ARM	IDD ARM	VSS	VSS	IDD CORE	IDD CORE	IDD CORE	VO1					MAN_TAN	MAN_TAN	MAN_TAN	MAN_DIV_RAN	Y		
AA	EMC[0]	EMC[0]																							AVDD3	APCOUT2	APCOUT2	MAN_TAN		AA		
AB	EMC[0]	EMC[0]	EMC[0]	EMC[0]	EMC[0]																				SMCLK2	SMCLK2		APCOUT1	APCOUT1	AB		
AC	EMC[0]	EMC[0]	EMC[0]	EMSSQ			VSS				MCS1_AD D	VSS	VSS	VSS	H3C_STR OBE	H3C_DATA DW	H3C_VSS 2 DP								SMCLK2			SMCLK1	VSS	AC		
AD	EMSSQ		EMC[0]	EMSSQ																					U4T0	VSS	SMRST2	SMCLK1	SMRST1	AD		
AE	EMC[0]	EMC[0]	EMC[0]				MTCK				MCS1_AN D	TRACE[0] 3	SD1_D[0]	SD1_D[0]	VSS		VSS	SOLD[0]	VSS					AUD_DATA	ANA_INT		U4R0	U0CTS	U4R0	SMRST1	VSS	AE
AF	EMC[0]	EMC[0]	EMC[0]	EMC[0]			MTCK				MCS1_DATA N0	MCS1_DATA P0	CM_RST	TRACE[0] 2	SD1_CMD	SD0_D[0]	SD0_CMD		SOLD[0]	AUD_DATA	CLK_SCK			EXT_RST_B	U0RTS	U0R0		U4T0	ISOLCK	ISID0	ISID1	AF
AG	EMC[0]		EMC[0]	EMC[0]			OTD0_LTE	MCS1_AN D	MCS1_DATA N0	MCS1_DATA P0	MCS1_DATA N0	MCS1_DATA P0	DIS_LTE	TRACE[0] 4	TRACECLK	SD1_CLK			AD_SYNC	AD_SCLK				CHP_SLEEP	U4R0		U0RTS	ISID0	ISILCK		AG	
AH	NC		EMC[0]	EMC[0]	DTM_LTE	DTD_LTE	MCS1_DATA N0	MCS1_DATA P0	MCS1_DATA N0	MCS1_DATA P0	MCS1_REM	TRACE[0] 5	TRACE[0] 1	TRACE[0] 0	SD1_D[0]	SD0_CMD	SD0_D[0]	VRES	AD_D	AUD_DATA NC	YEL_BUF N0		AUD_ADD	AUD_SCLK	U4R0	U4T0	U4T0	ISOLCK	ISID1	NC	AH	
AI	EMSSQ	NC	EMC[0]		DTCK_LTE	DTCK_LTE	MCS1_DATA N0	MCS1_DATA P0			TRACE[0] 7	TRACE[0] 6		TRACE[0] L	SD1_D[0]		H3C_VSS 1 S	IDD USB			AUD_DATA NC	YEL_BUF N1		PTEST	U0CTS		U4T0	ISOLCK	NC	NC	AI	