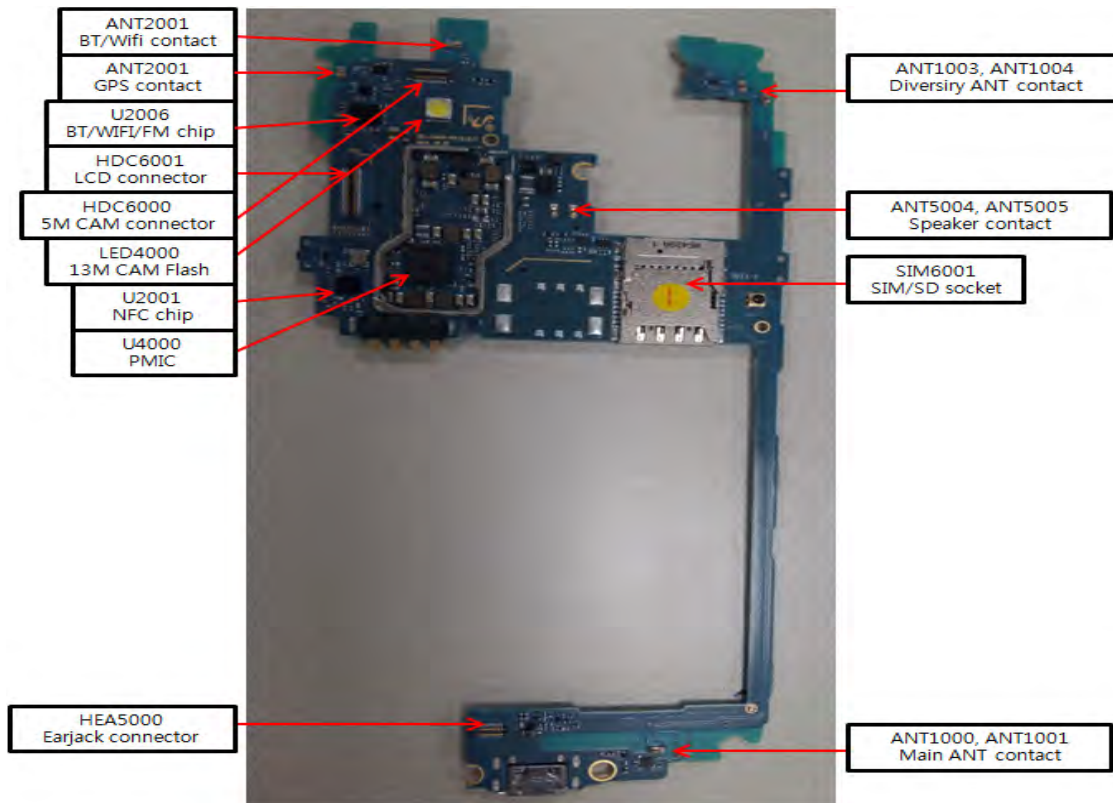
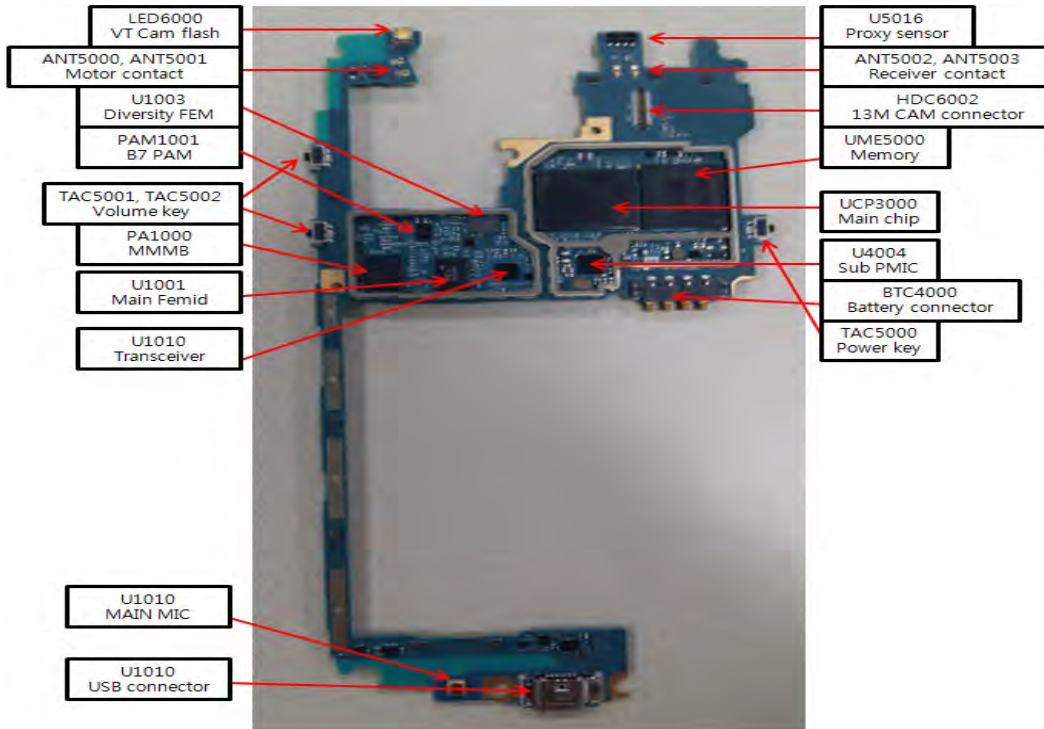
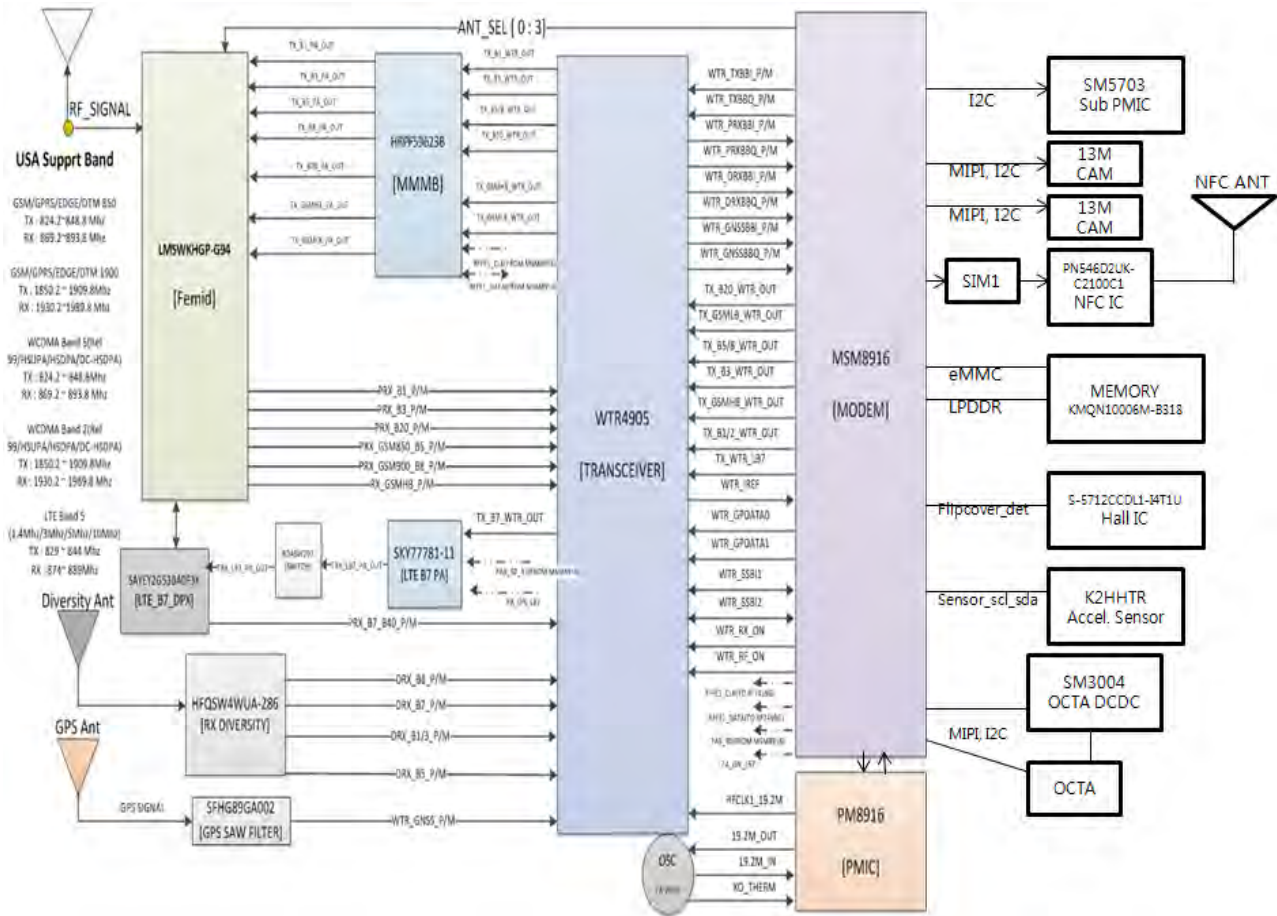


8. Level 3 Repair

8-1. Components Layout

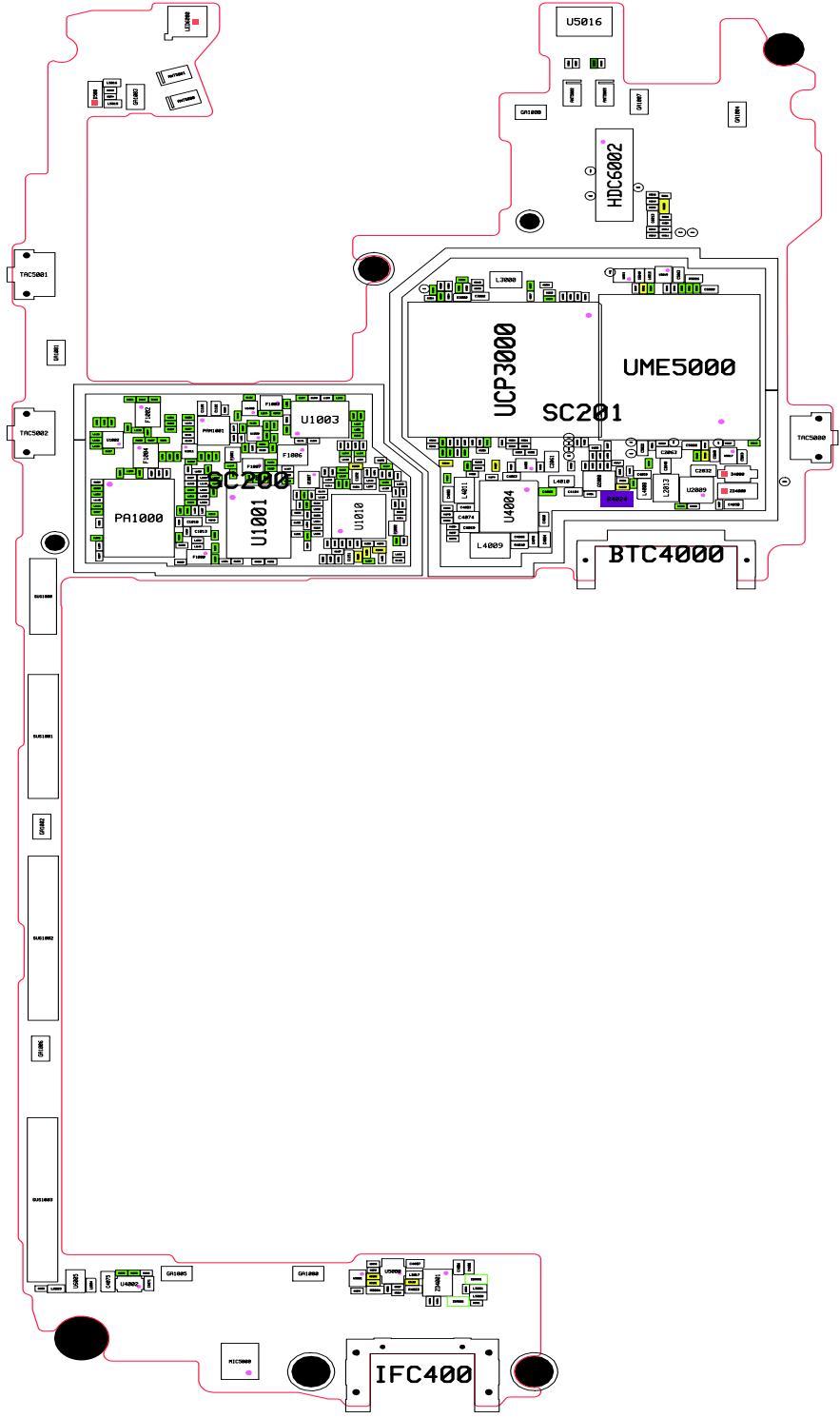


8-2. Block Diagram

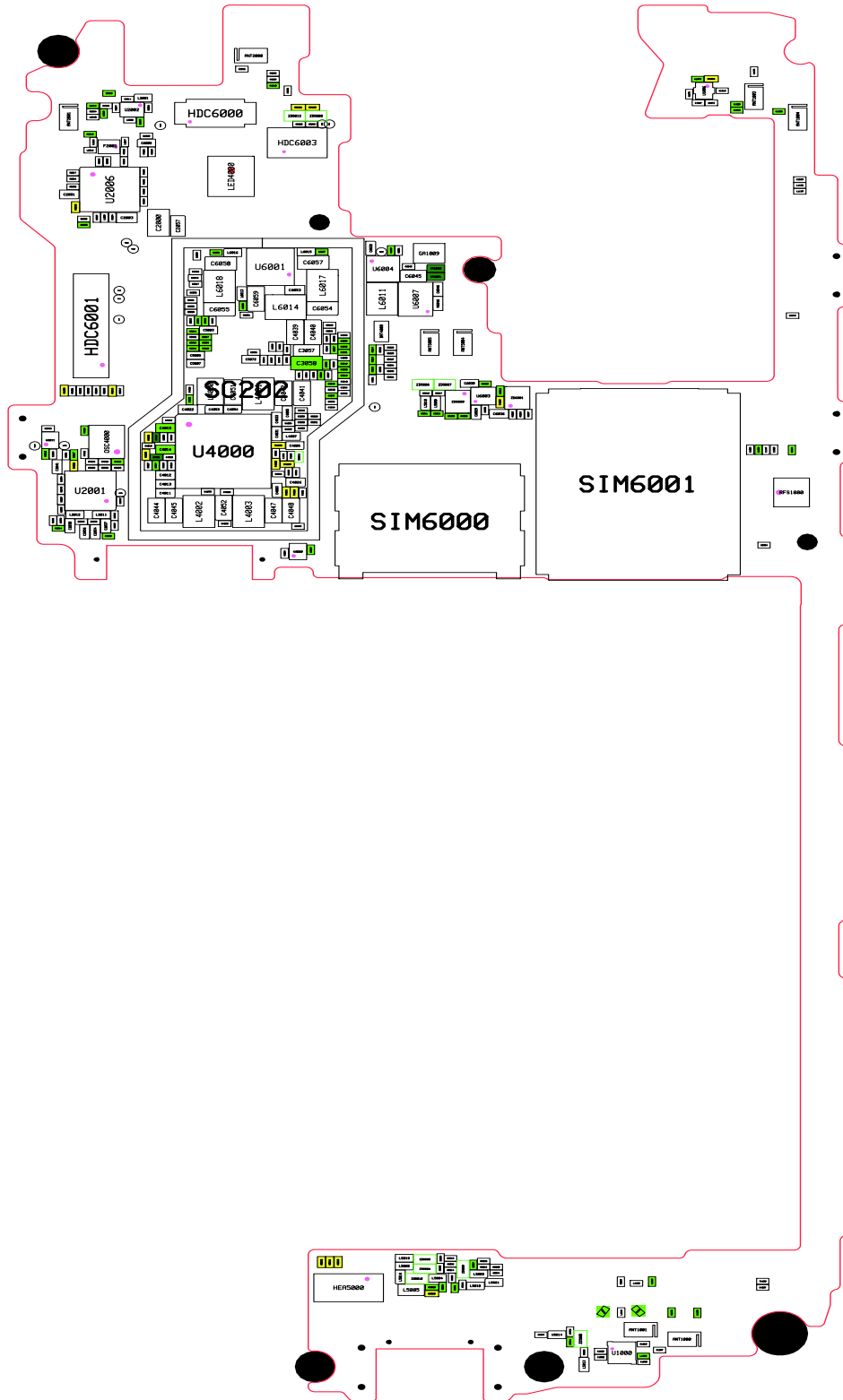


8-3. PCB Diagrams

8-3-1. Top

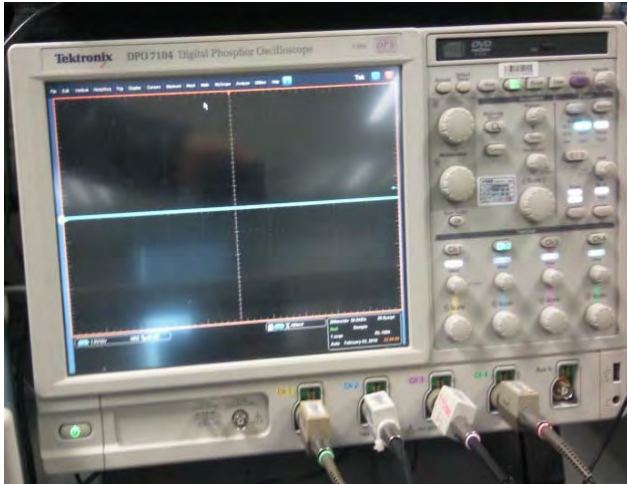


8-3-2. Bottom



8-4. Flow Chart of Troubleshooting

Equipments



↑ Oscilloscope



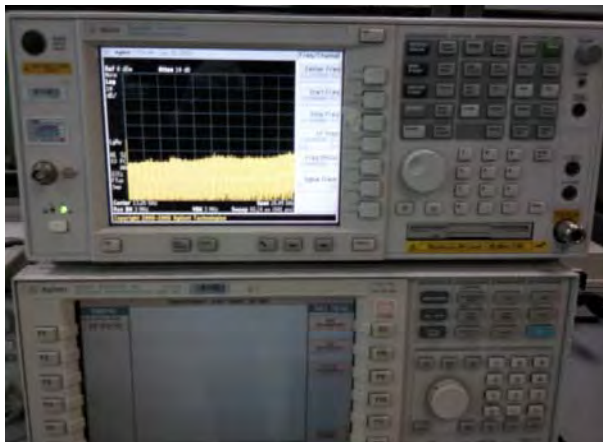
↑ Digital Multimeter



↑ Power Supply



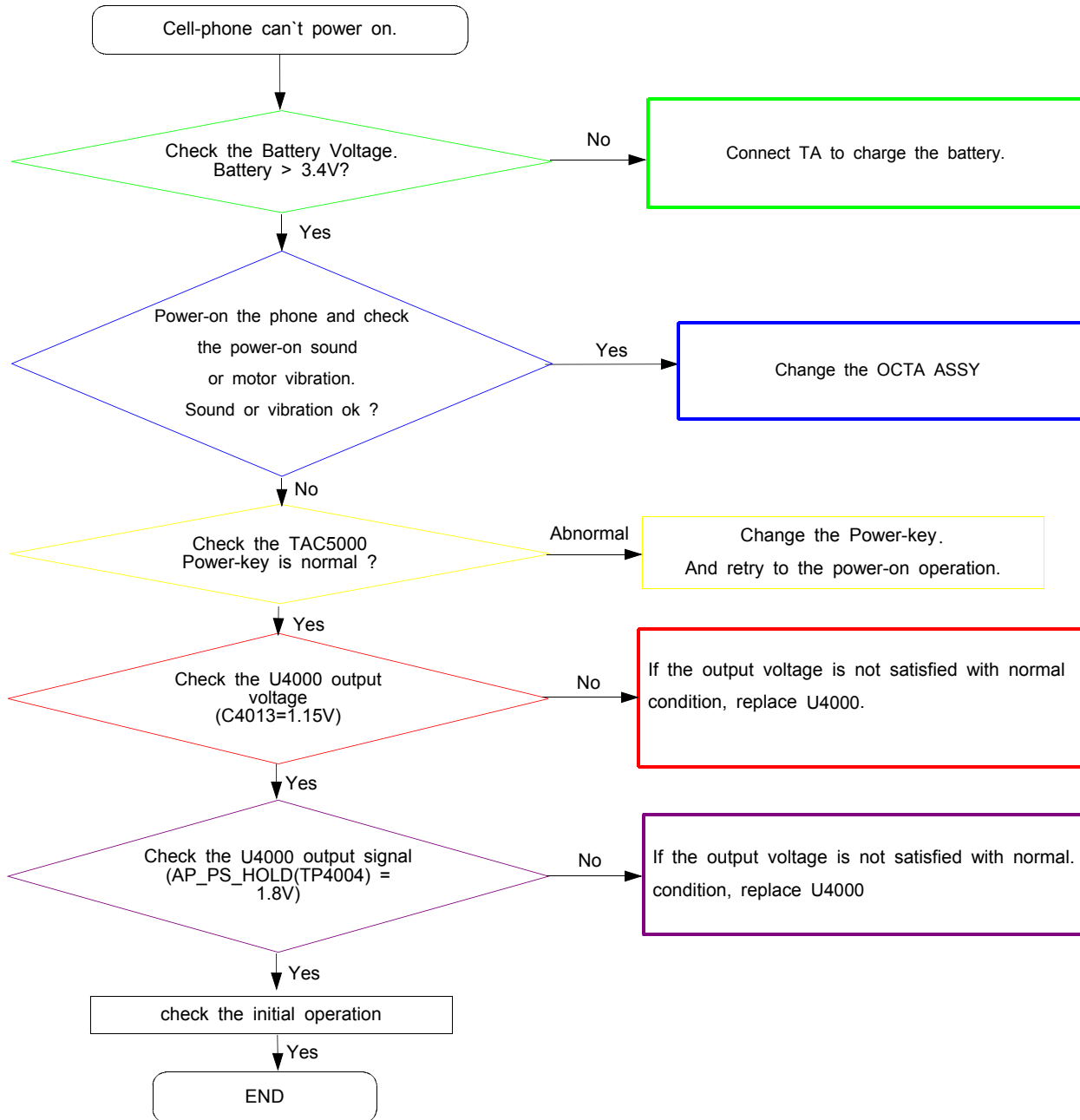
↑ + driver, ESD Safe Tweezer

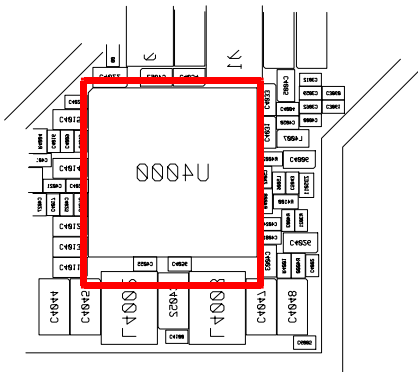
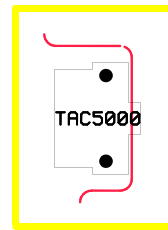
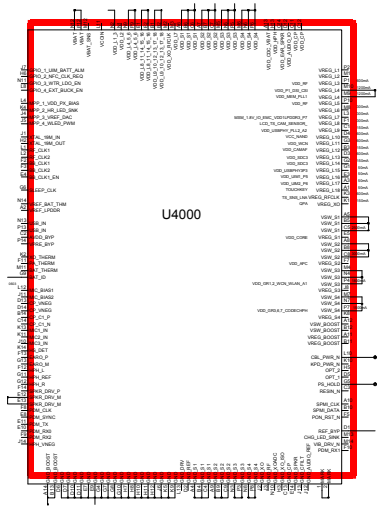
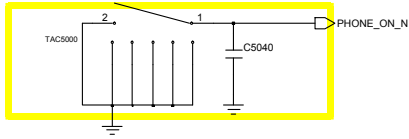


↑ 8960 & Spectrum Analyzer

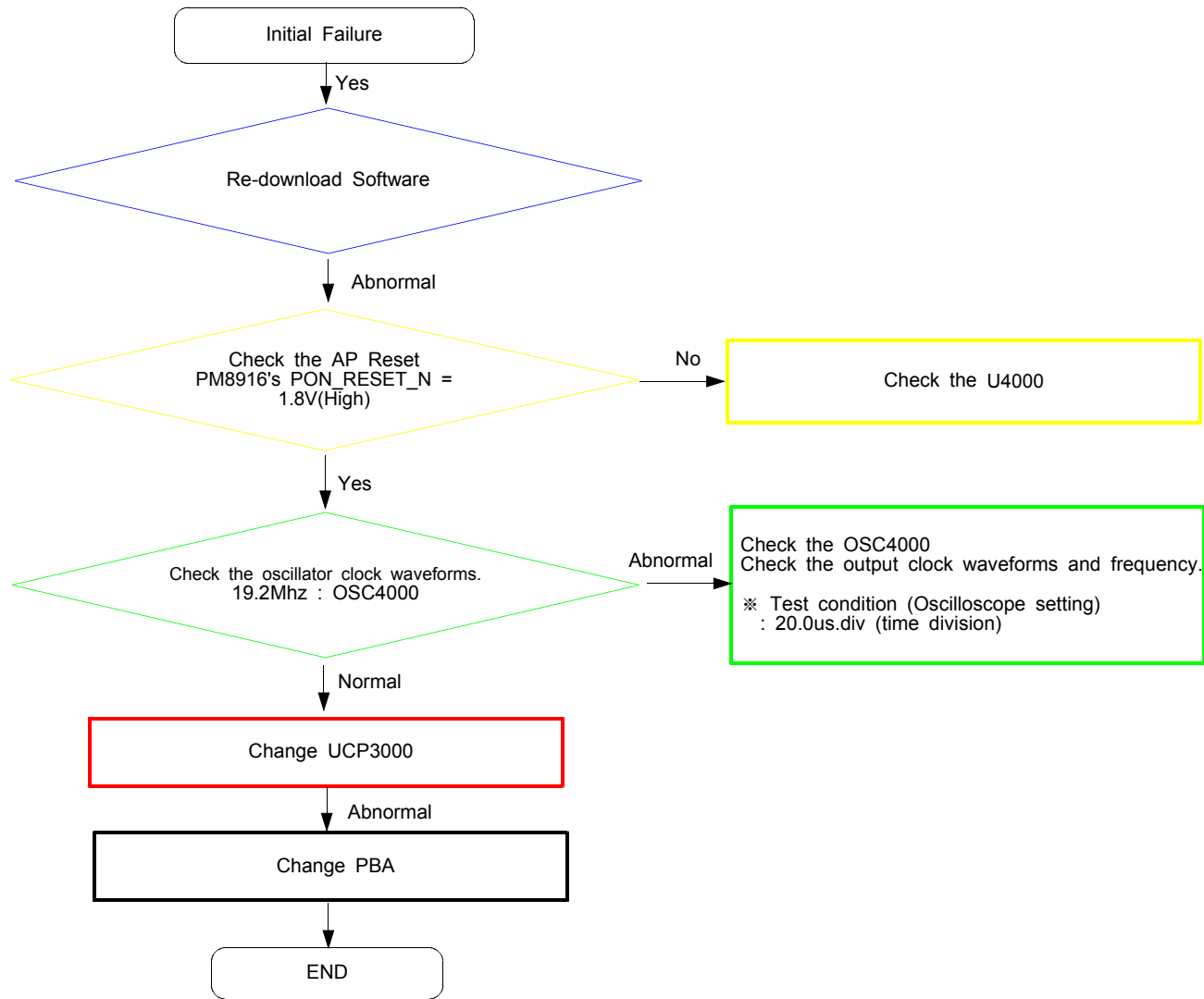
↑ Soldering iron

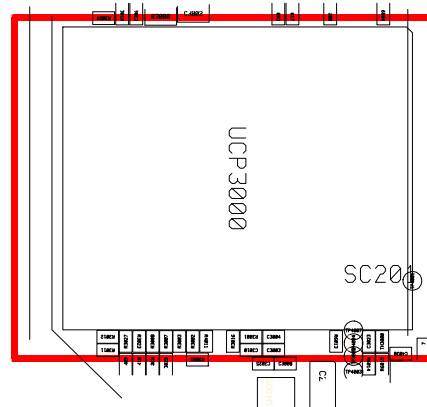
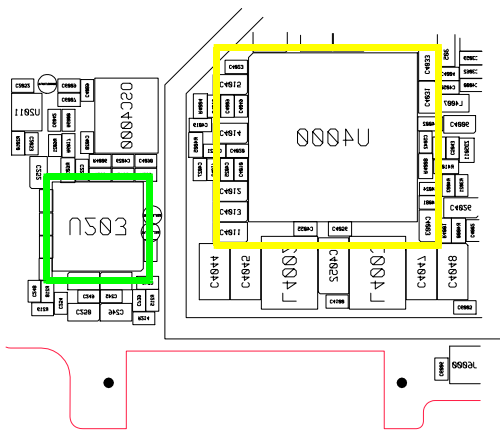
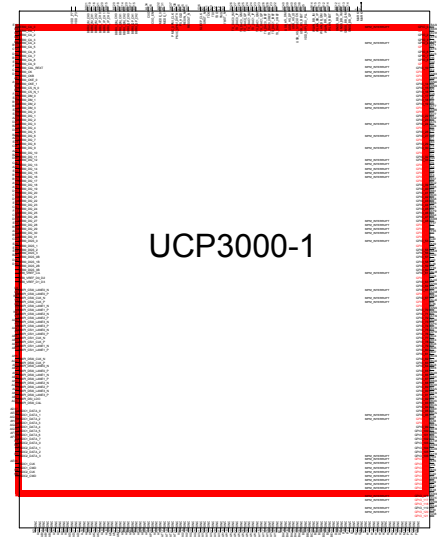
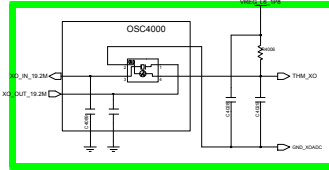
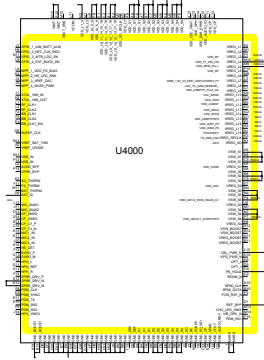
8-4-1. Power On



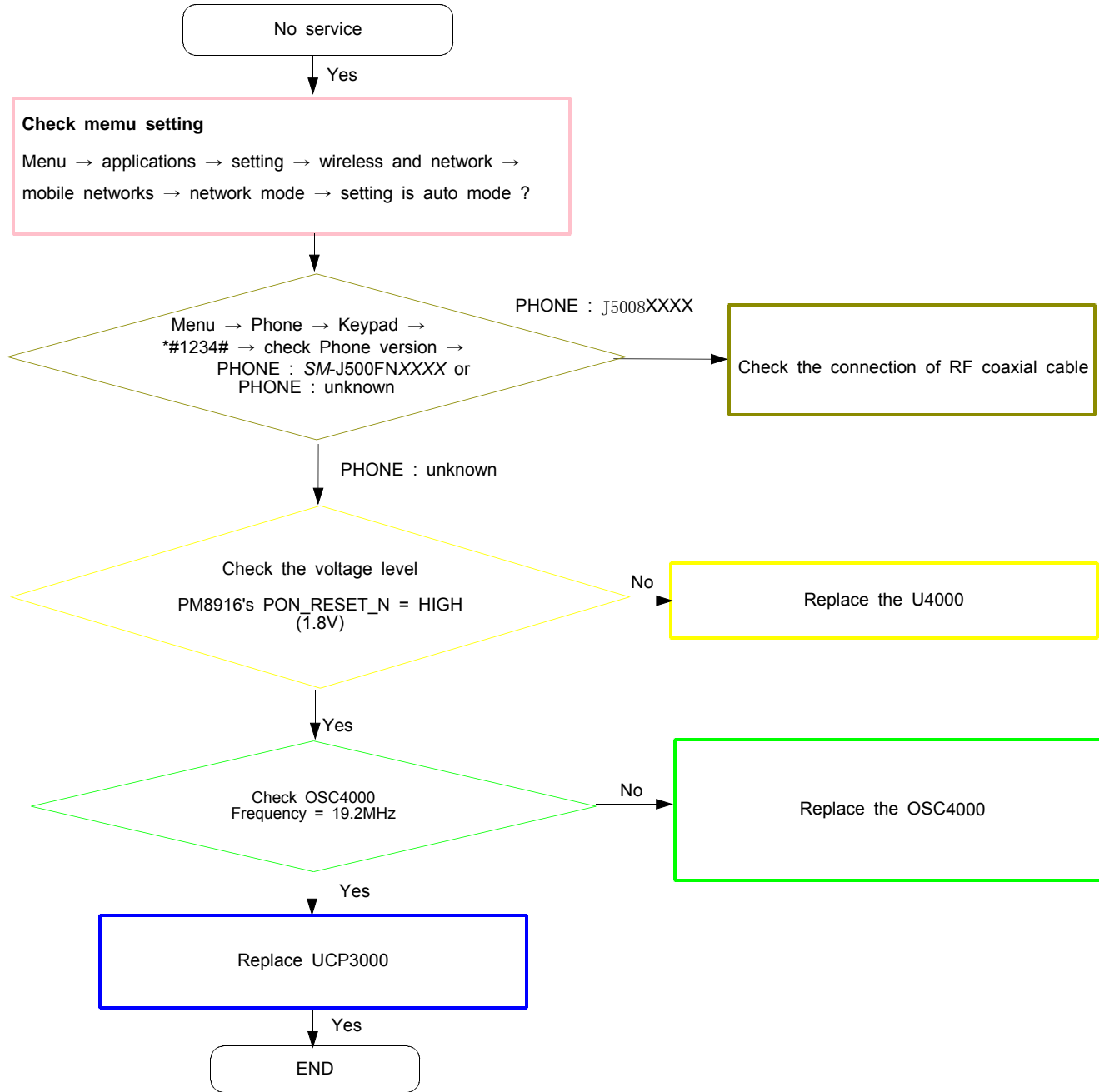


8-4-2. Initial



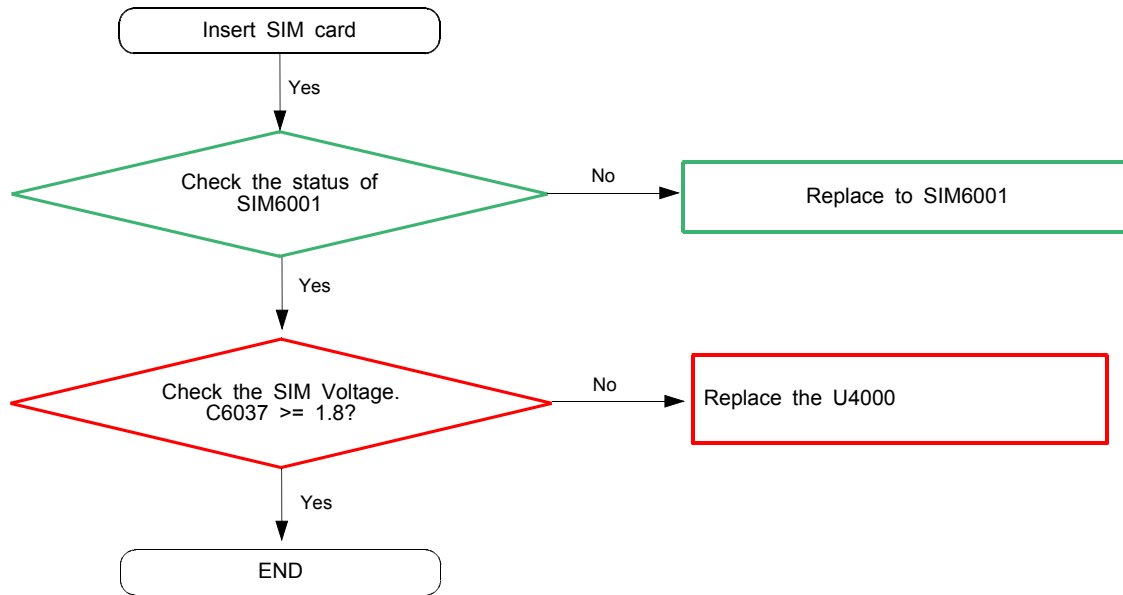


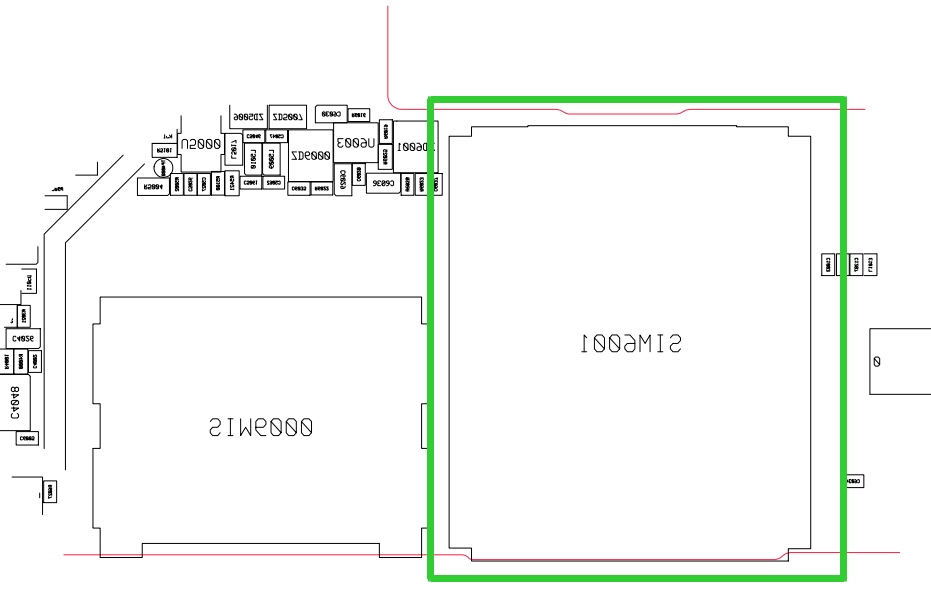
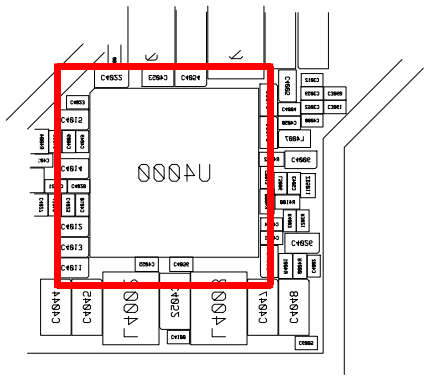
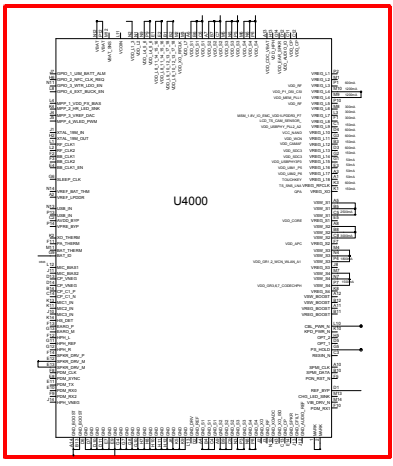
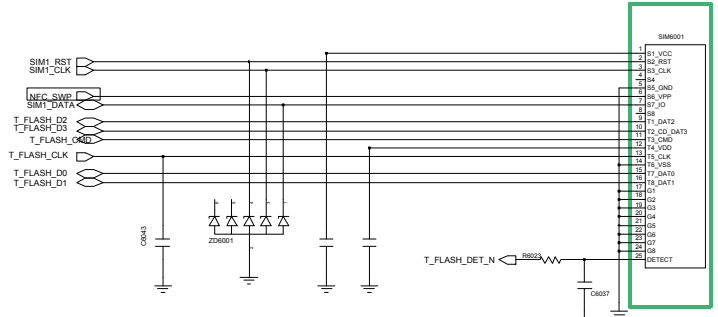
8-4-3. No Service



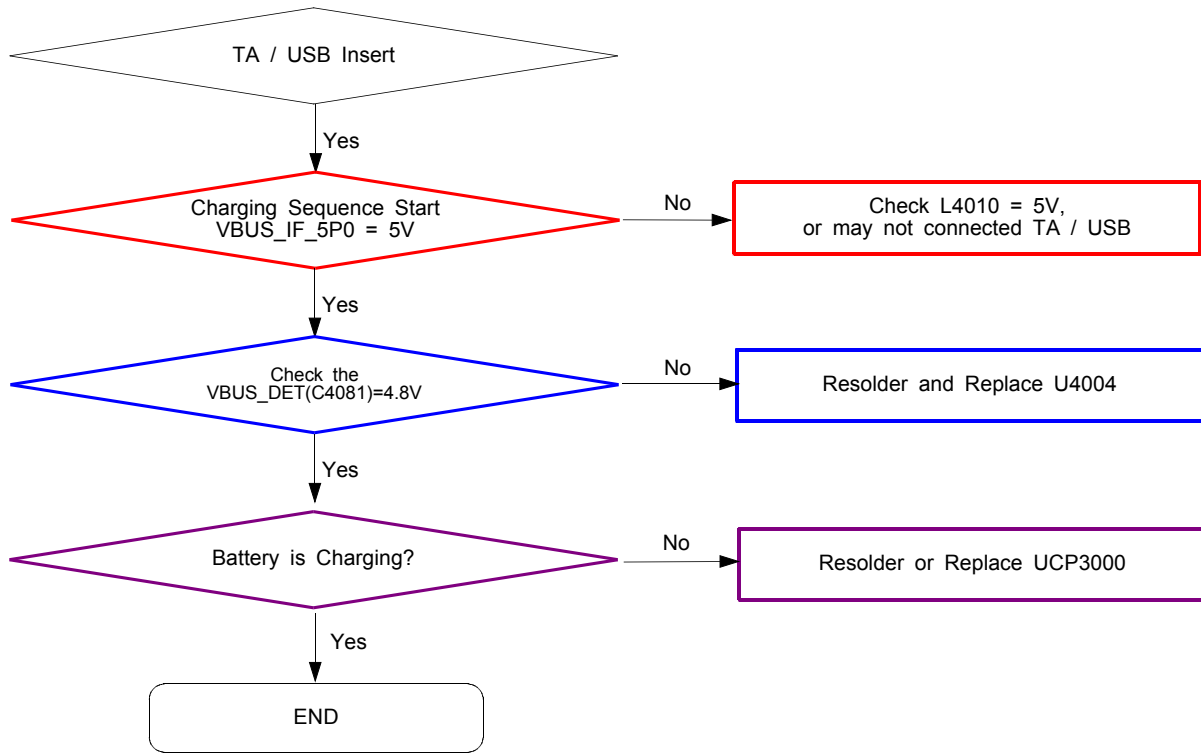


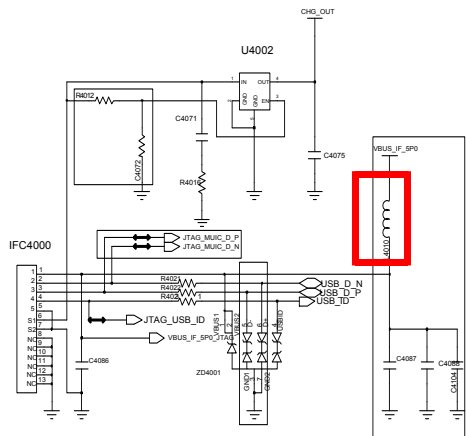
8-4-4. Sim Part - Sim Card



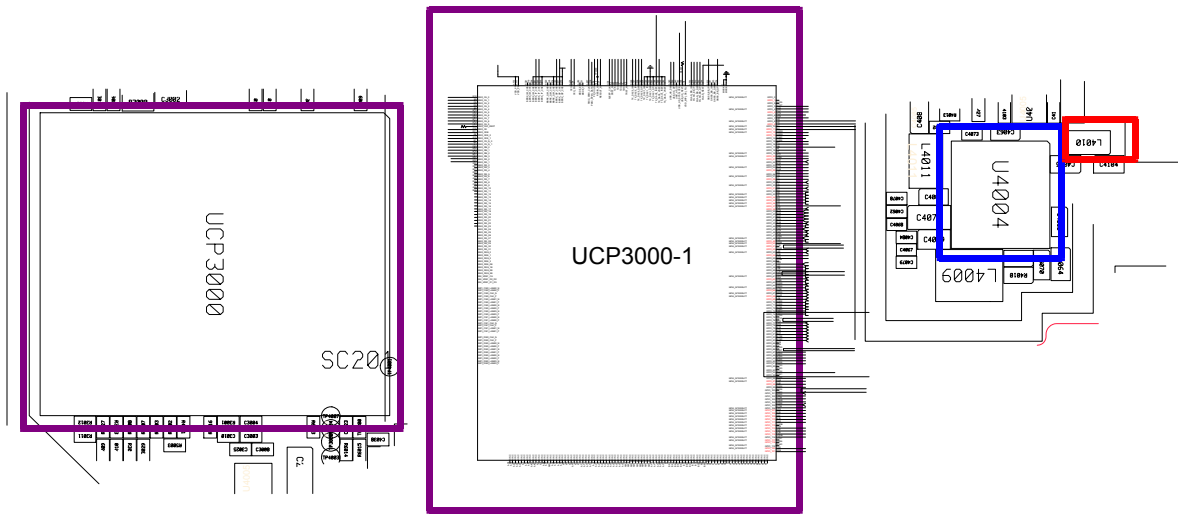
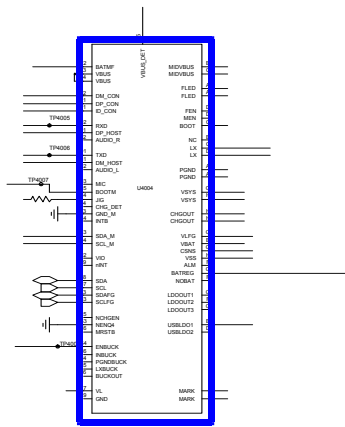


8-4-5. Charging Part

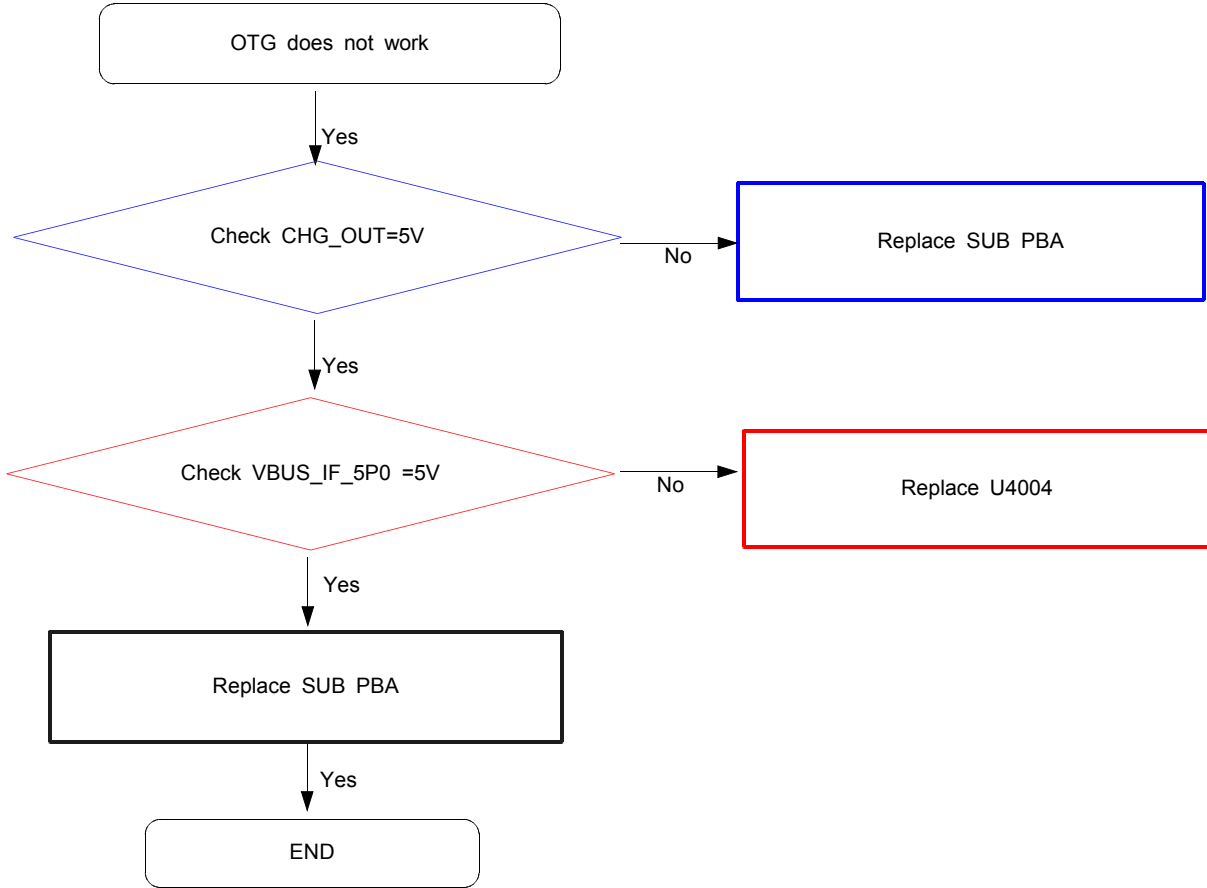


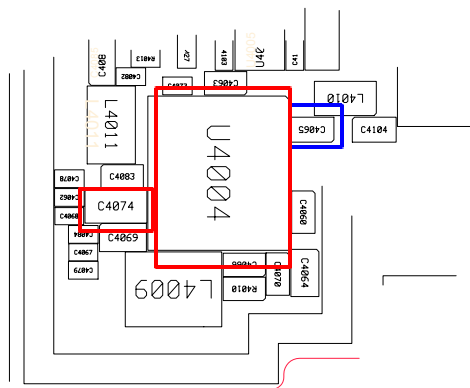
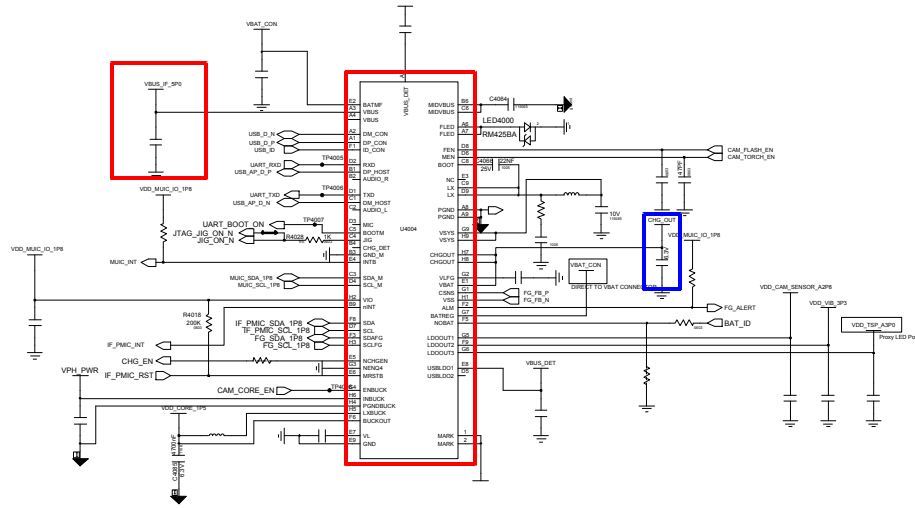


USB Connector

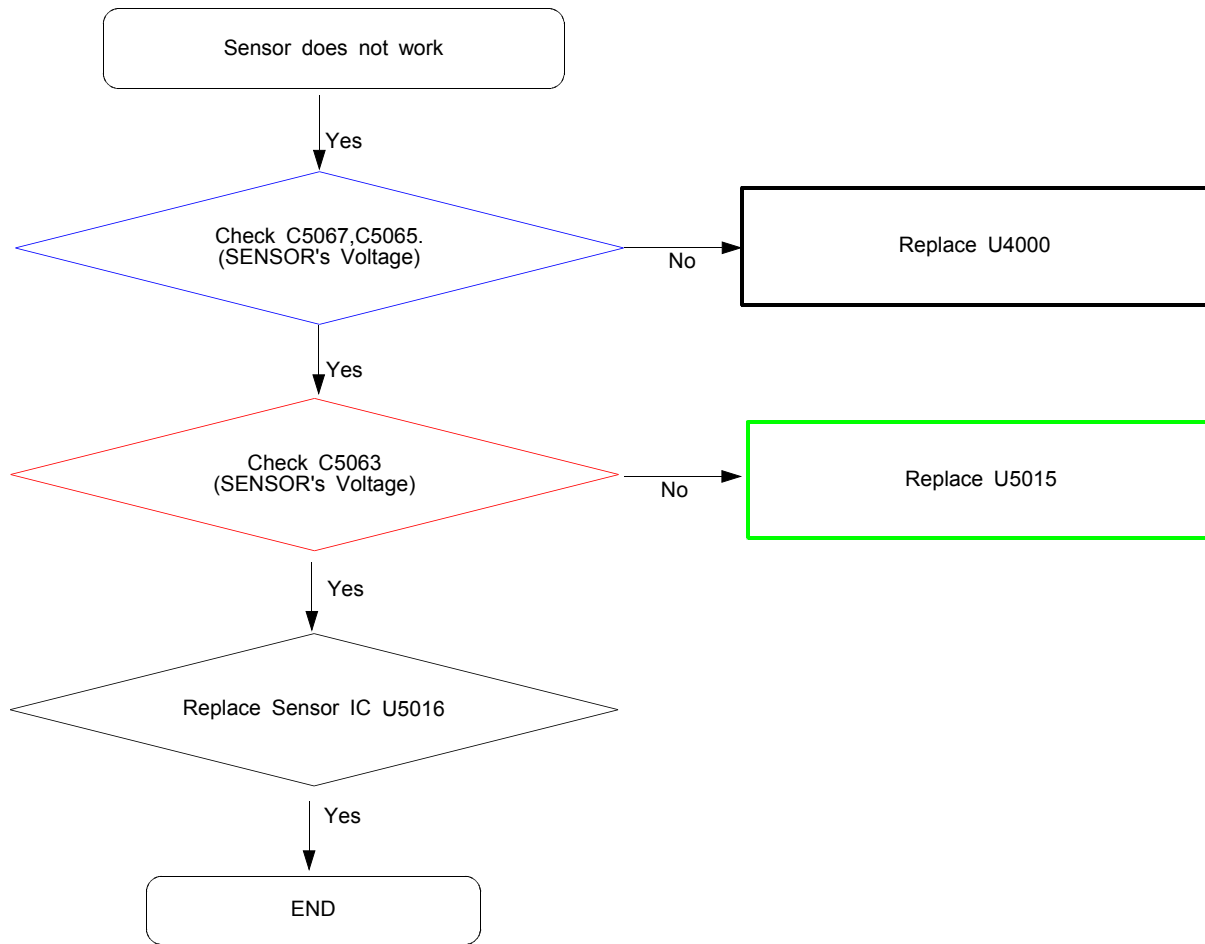


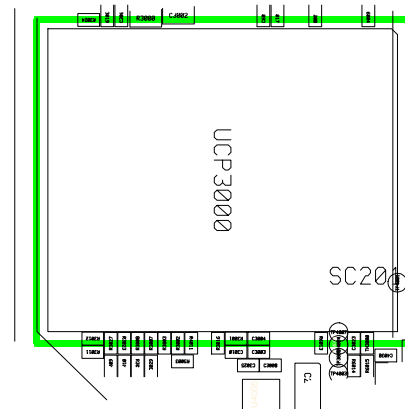
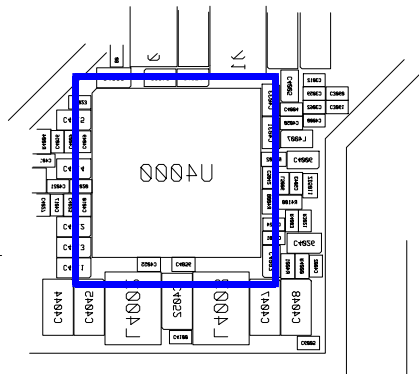
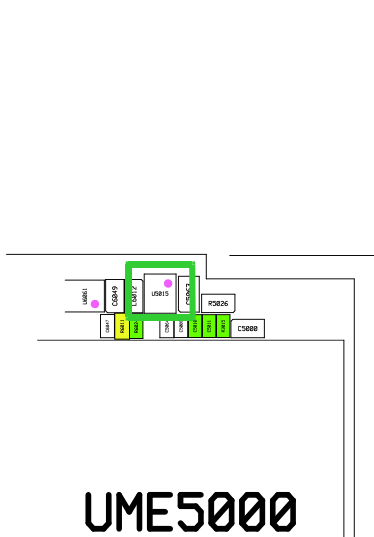
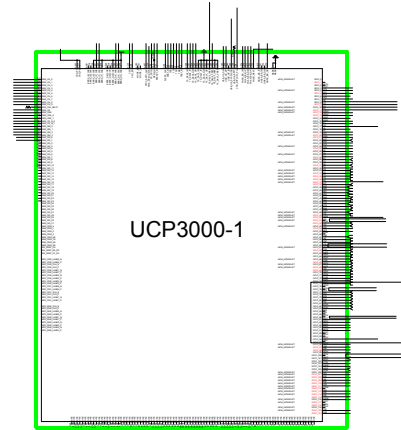
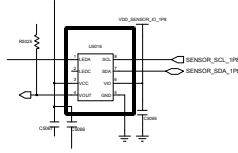
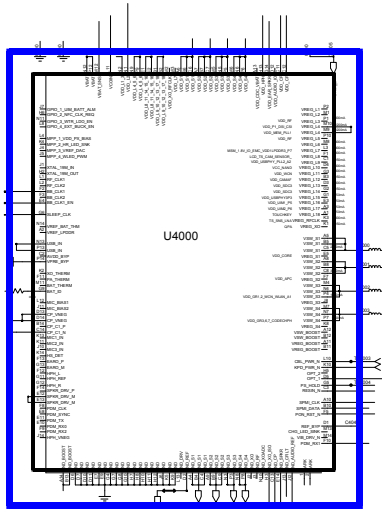
8-4-6. OTG



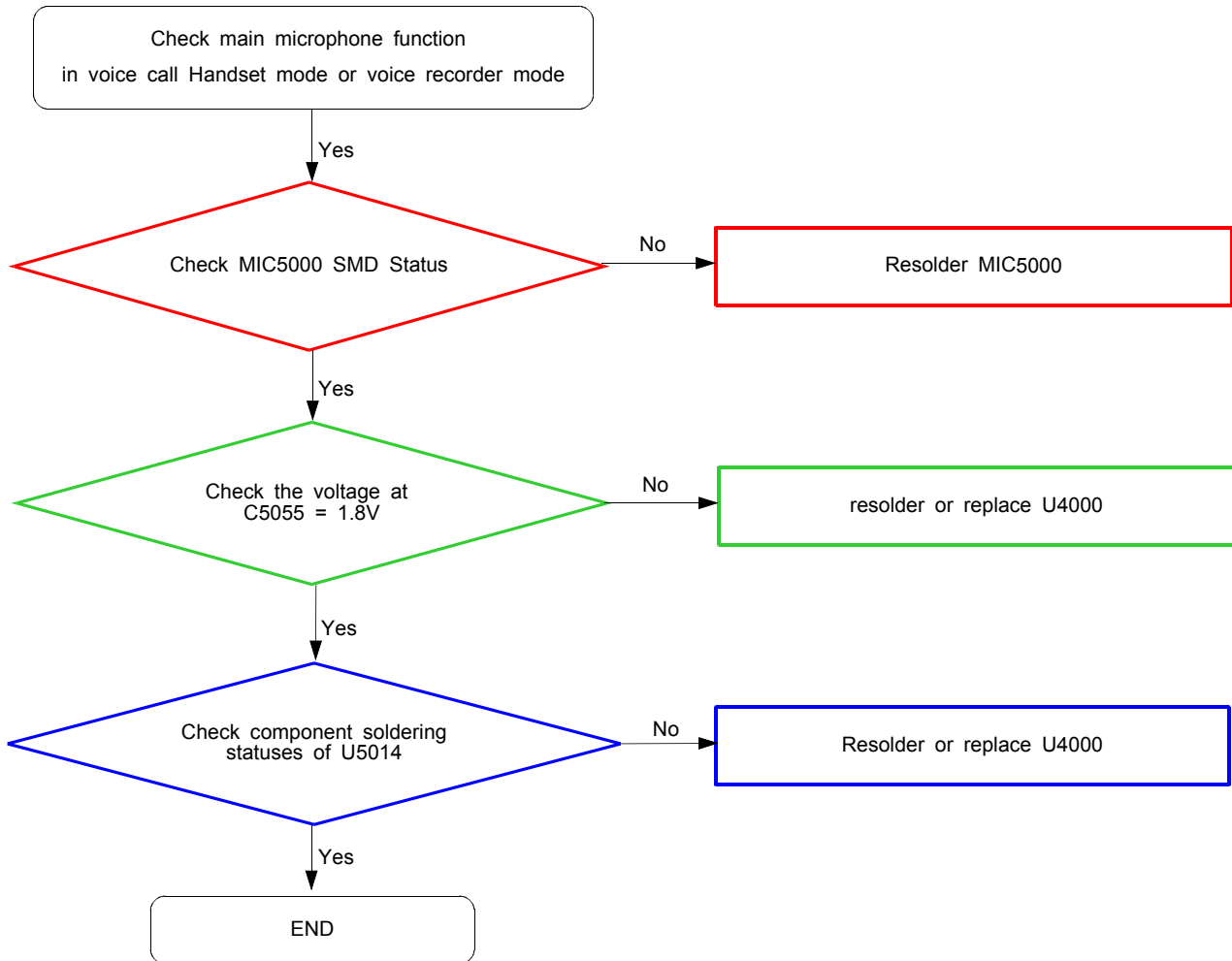


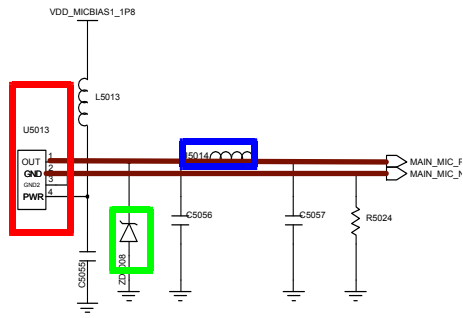
8-4-7. Proxy Sensor



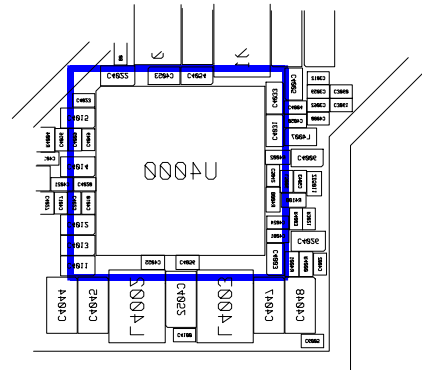
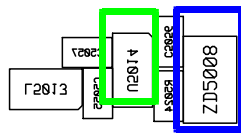
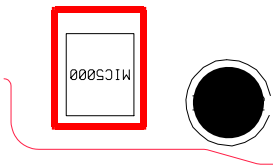
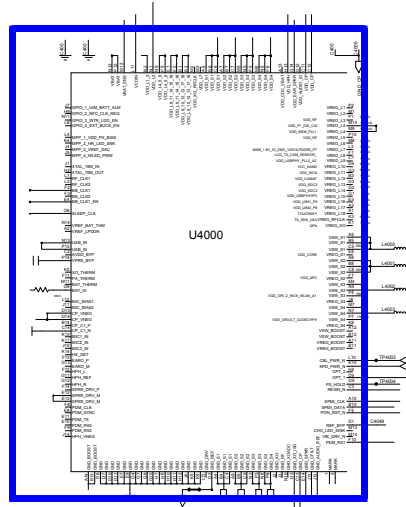


8-4-8 Microphone Part - Main MIC

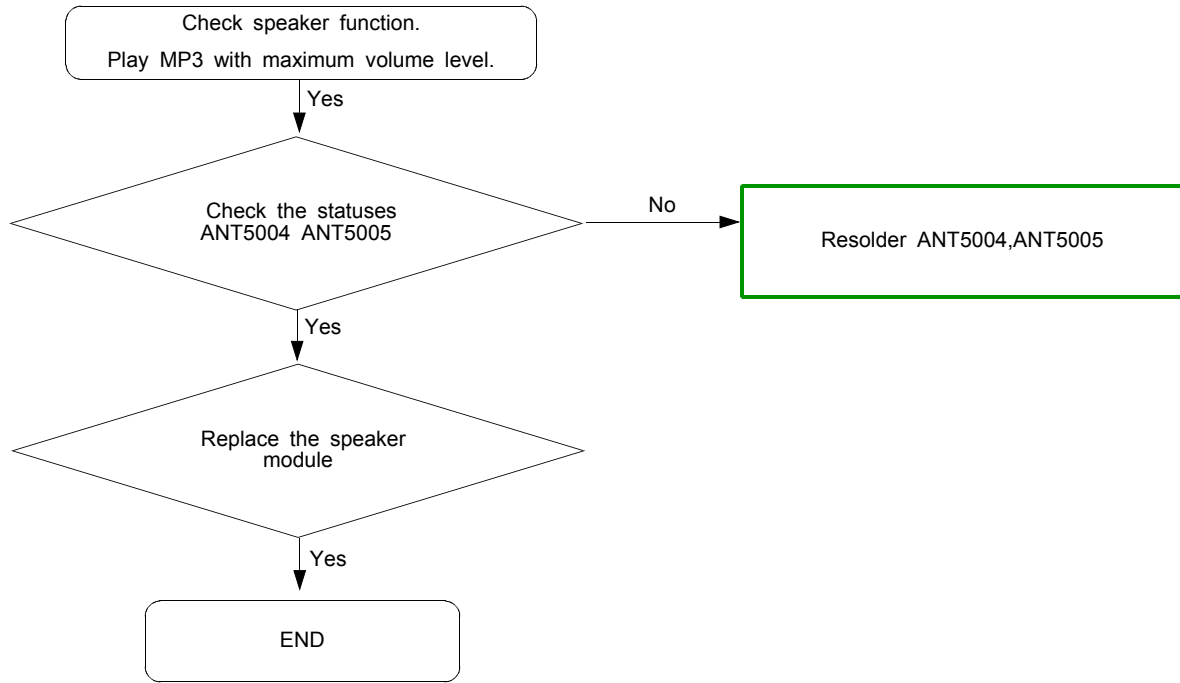


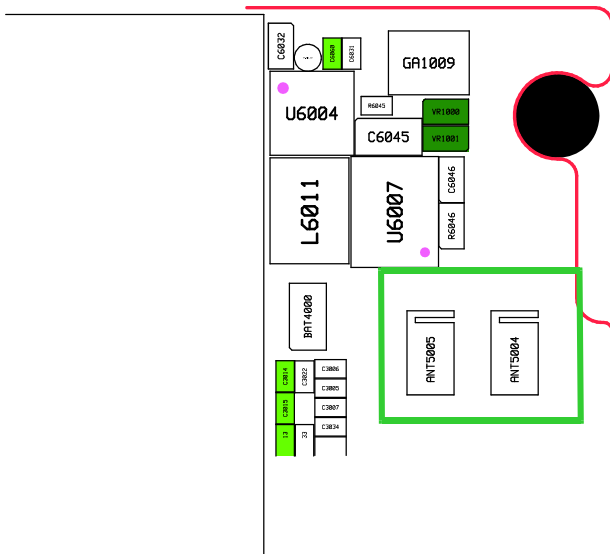
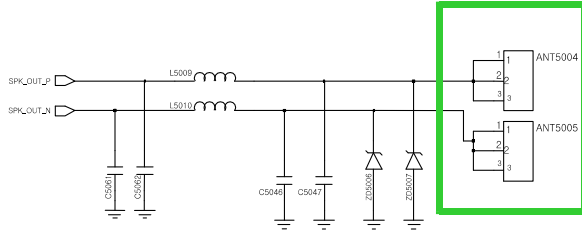


Main MIC

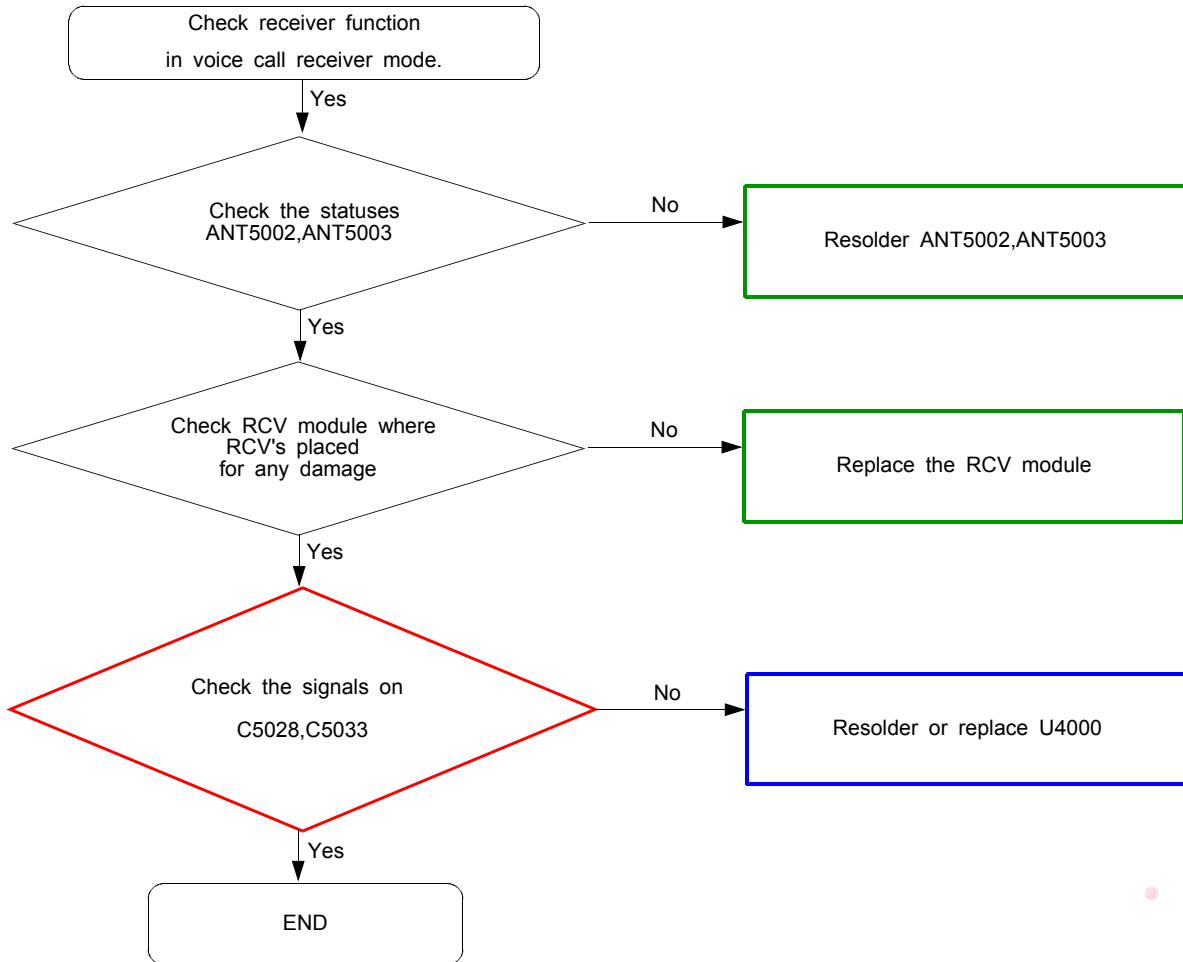


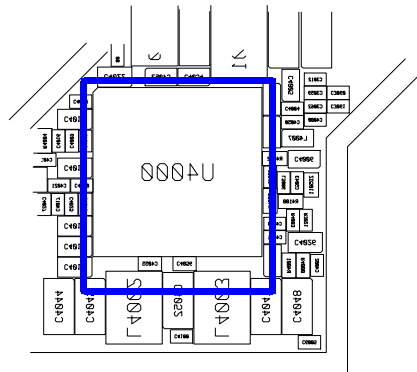
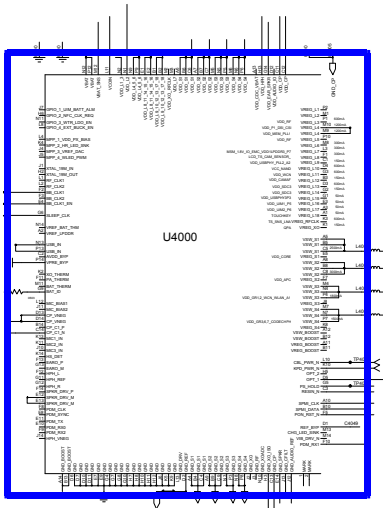
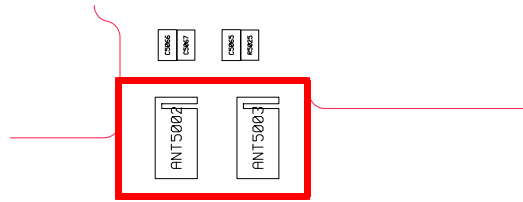
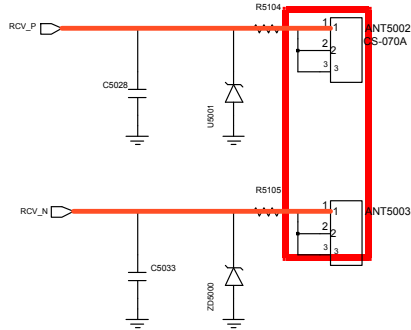
8-4-9. Speaker Part



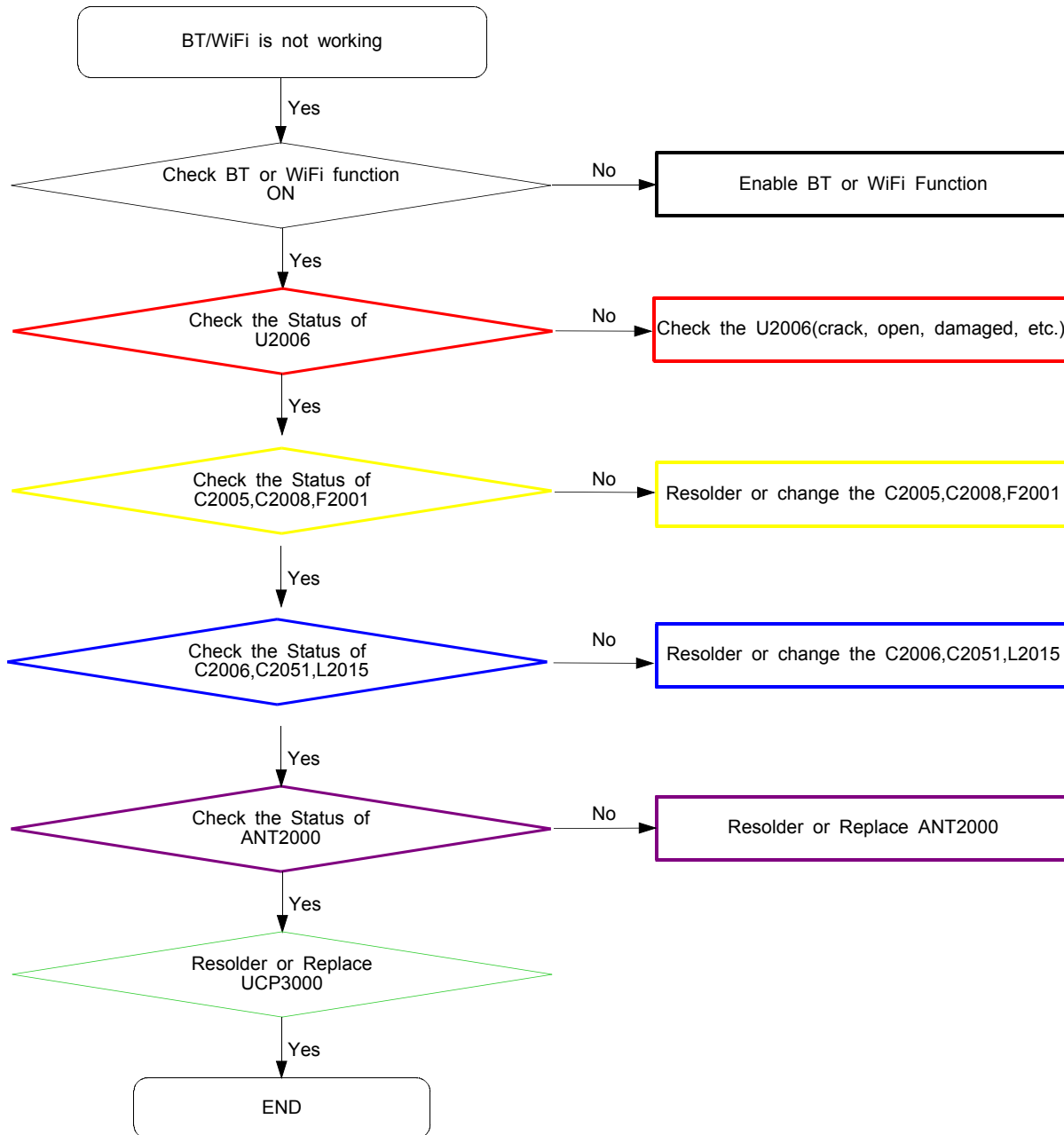


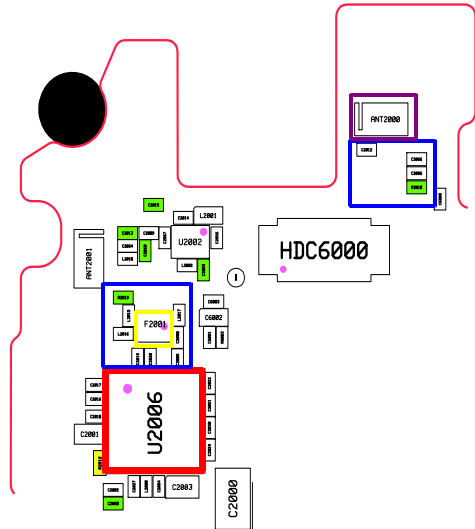
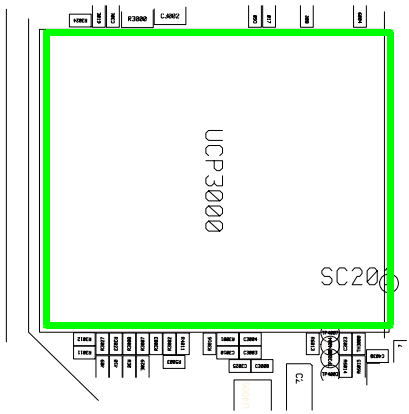
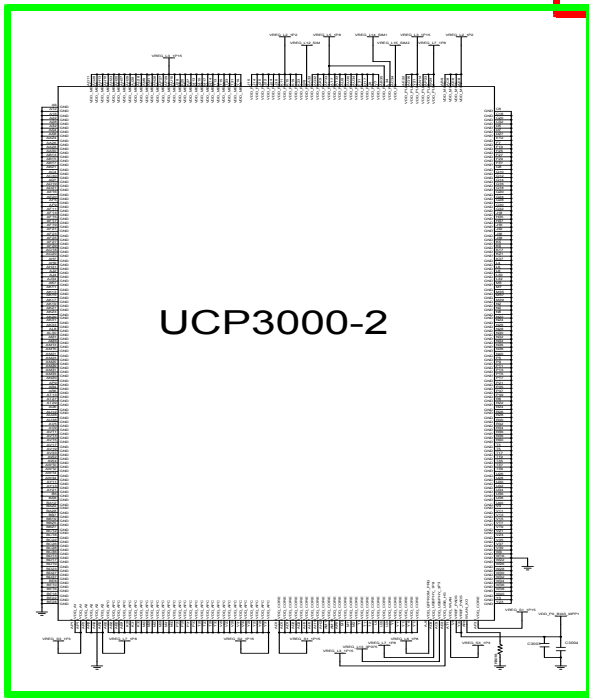
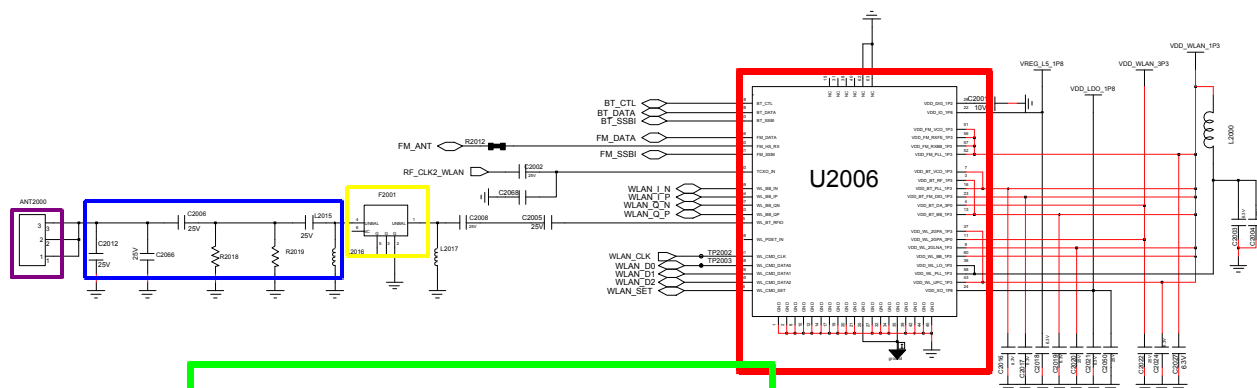
8-4-10. Receiver Part



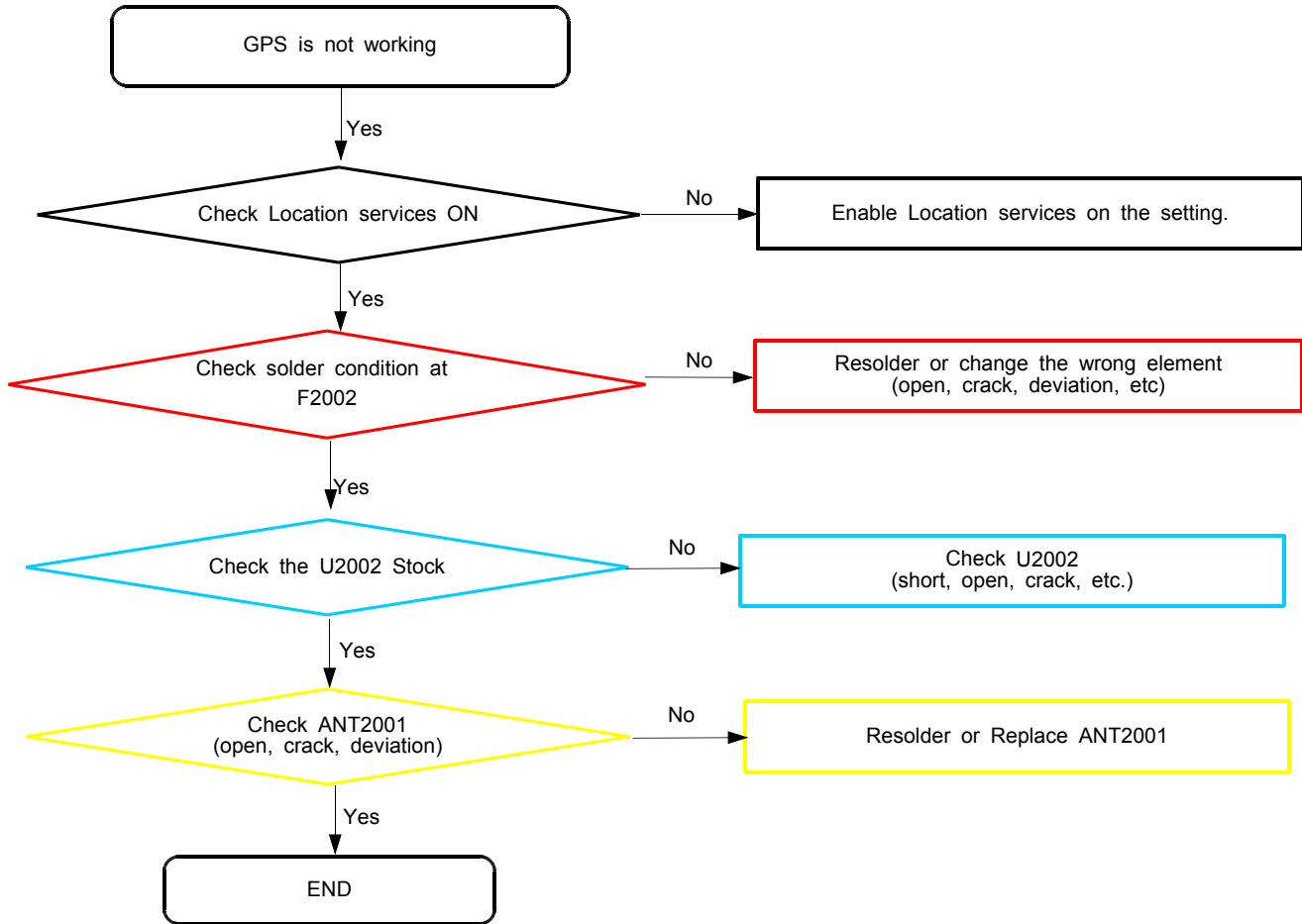


8-4-11. BT/WIFI

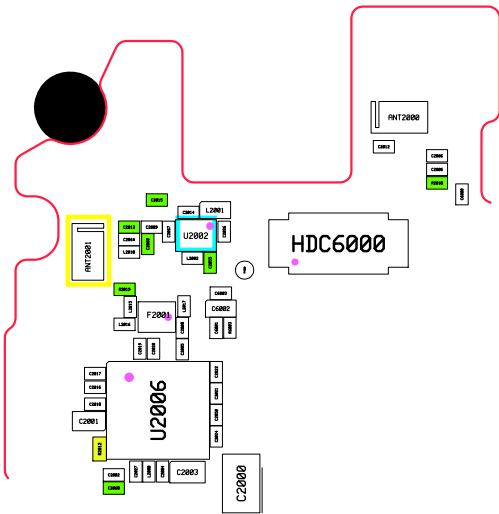
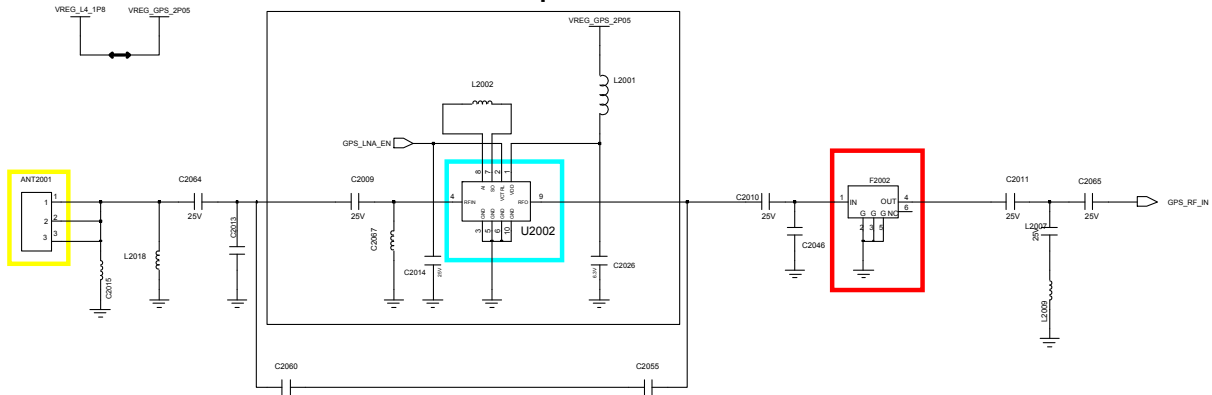




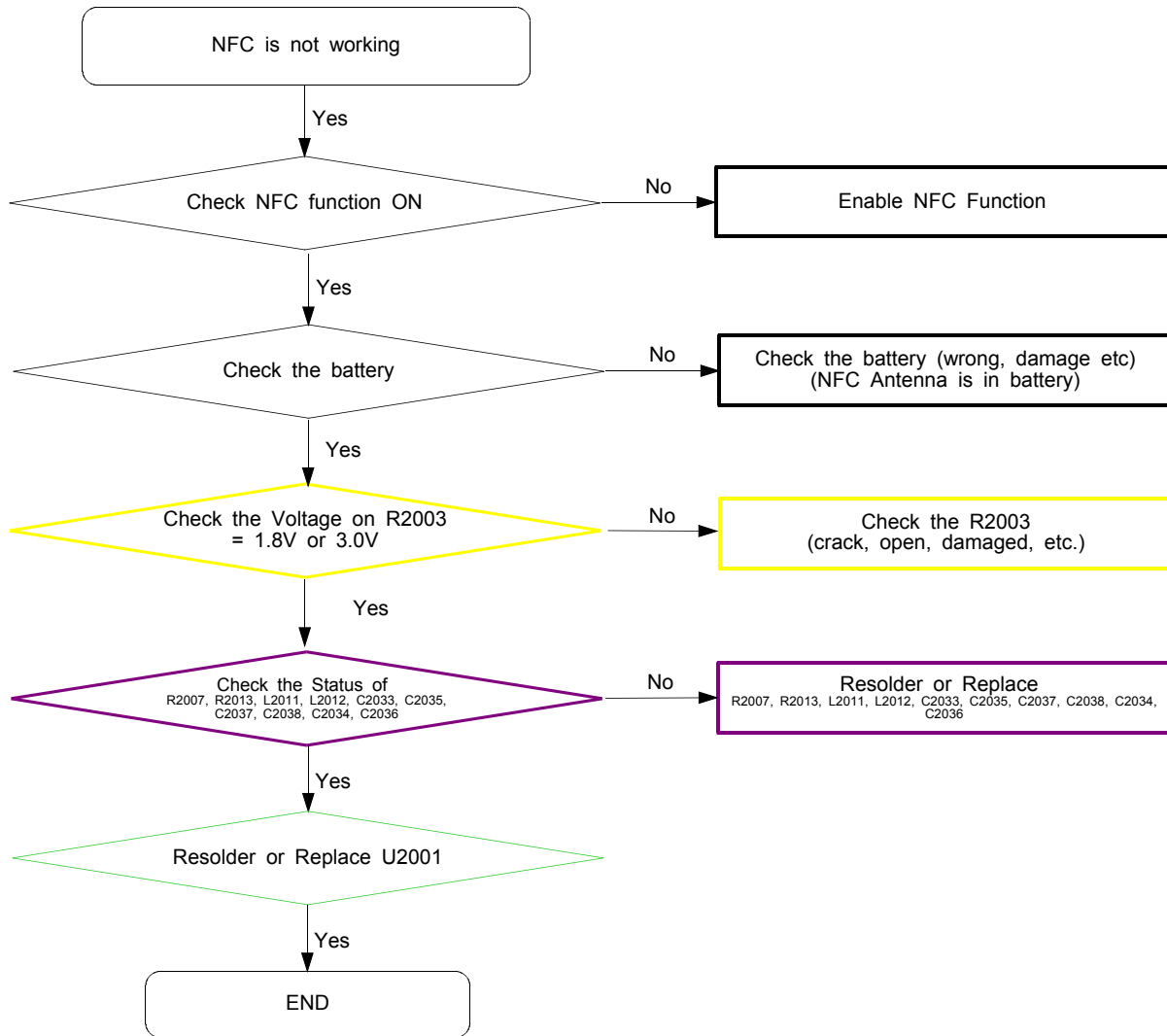
8-4-12. GPS

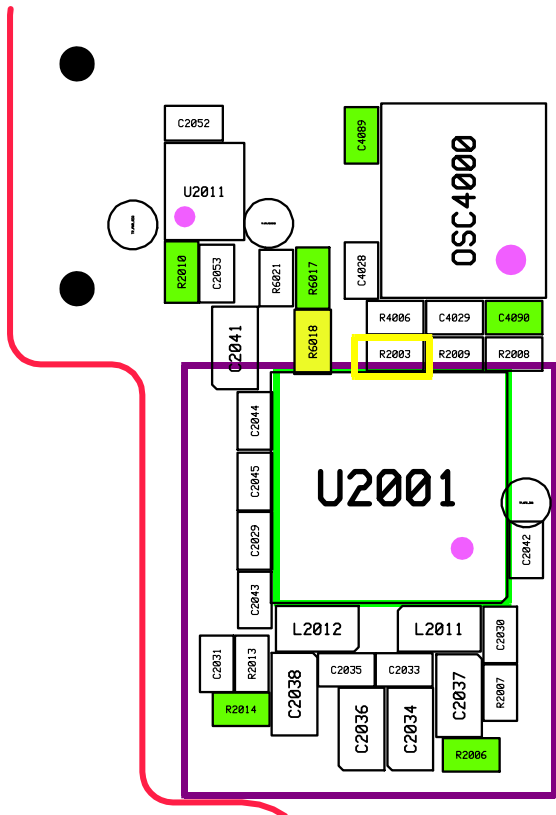
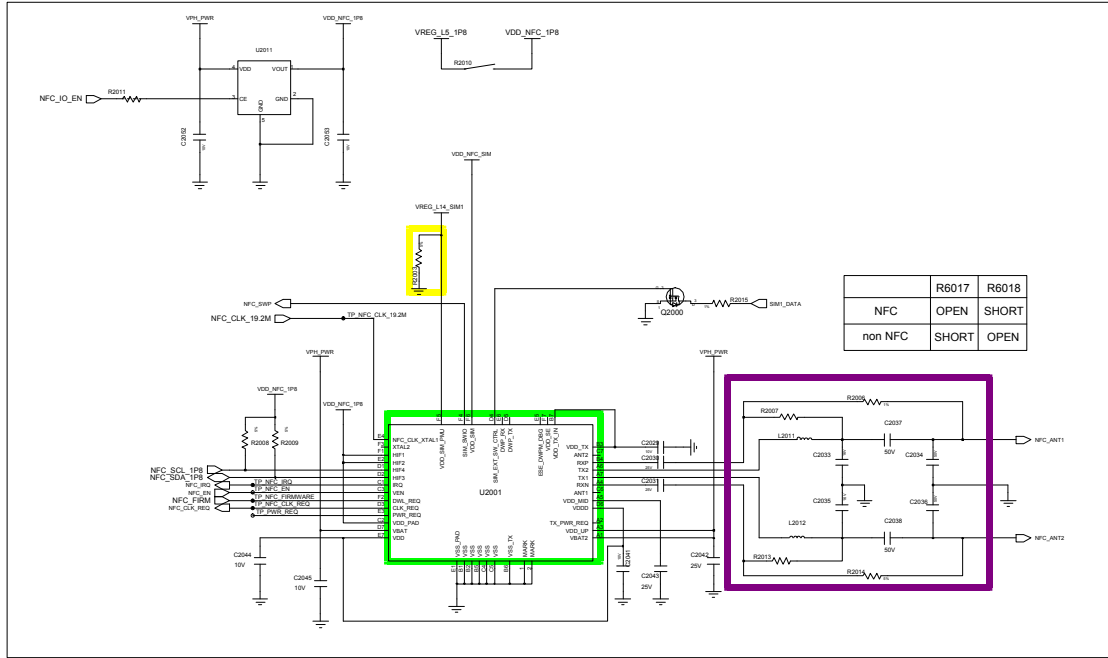


GPS LNA Option

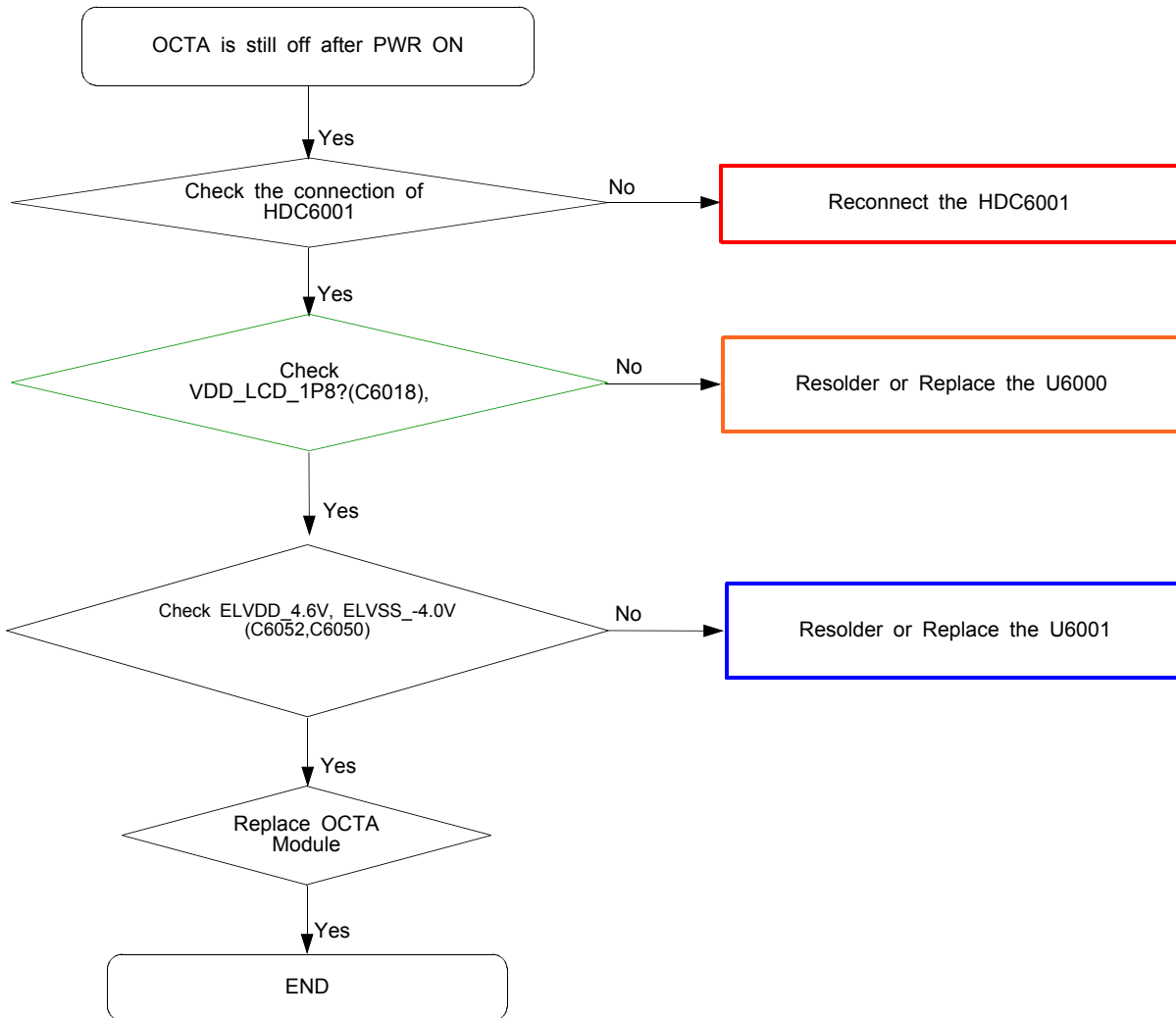


8-4-13. NFC

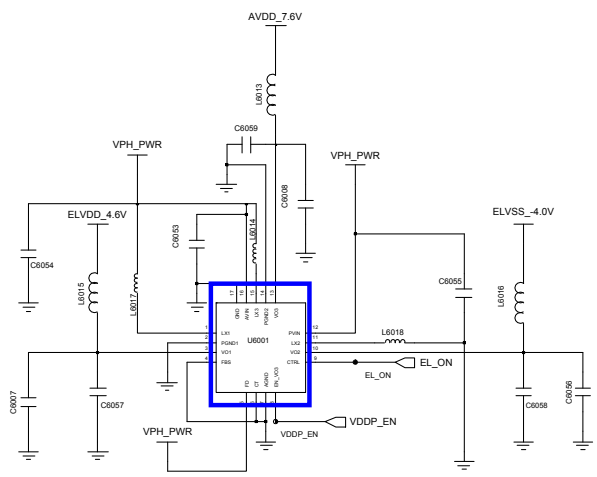
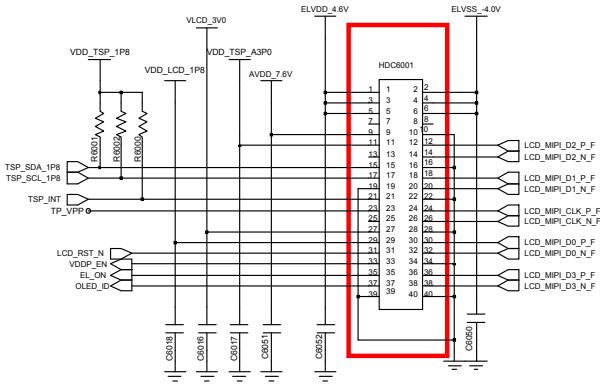




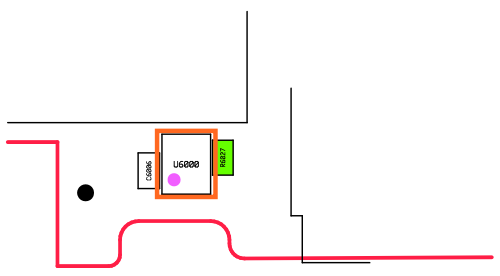
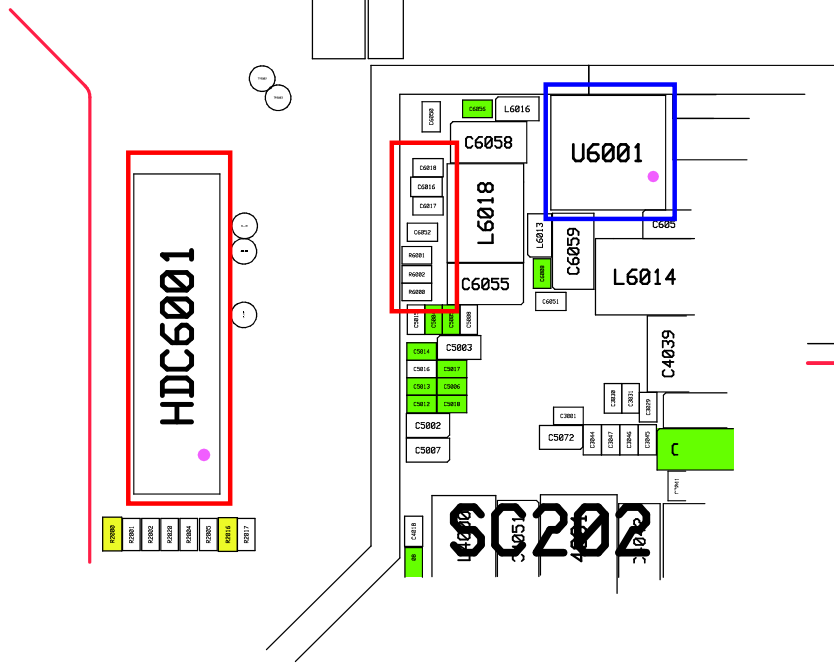
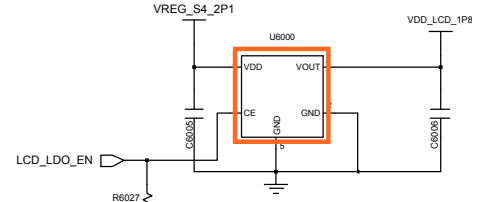
8-4-14. OCTA



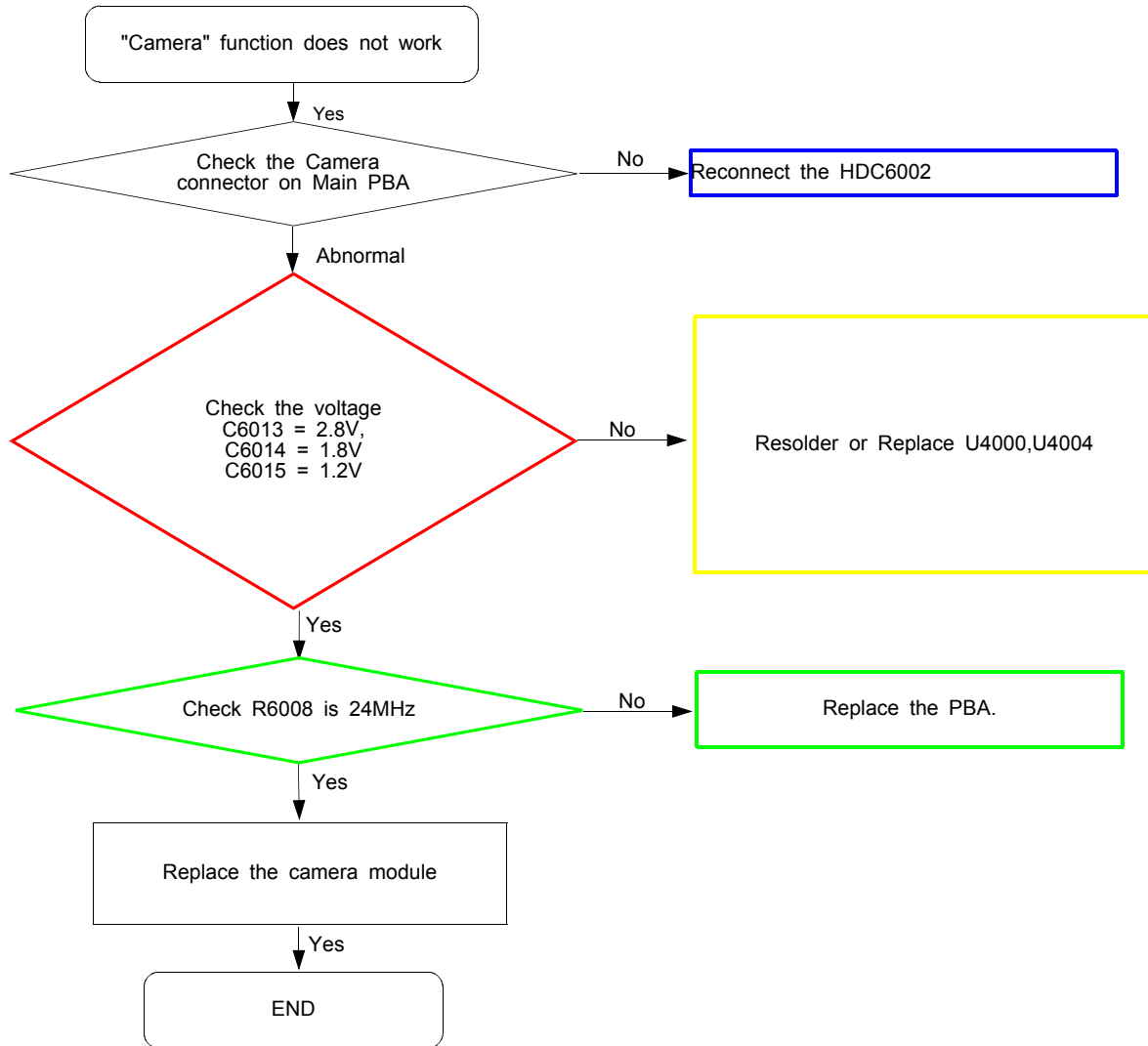
DISPLAY PART

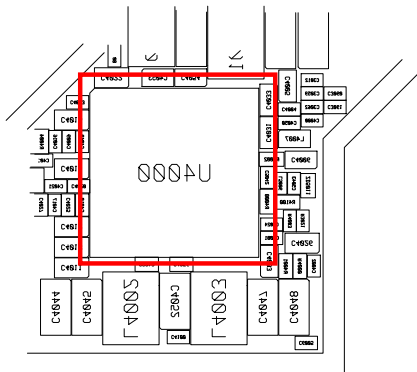
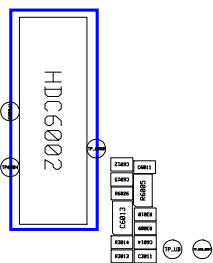
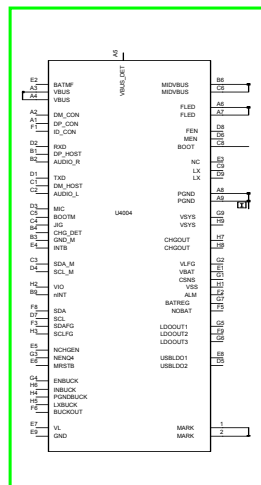
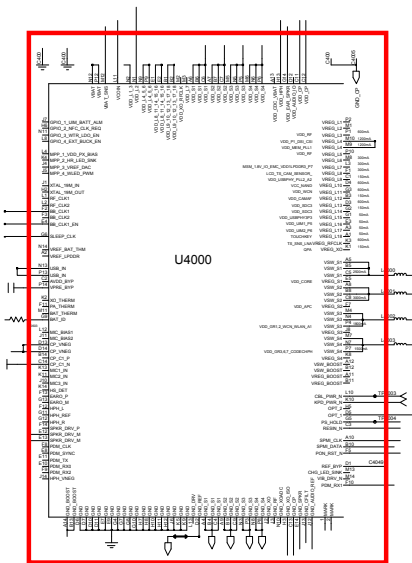
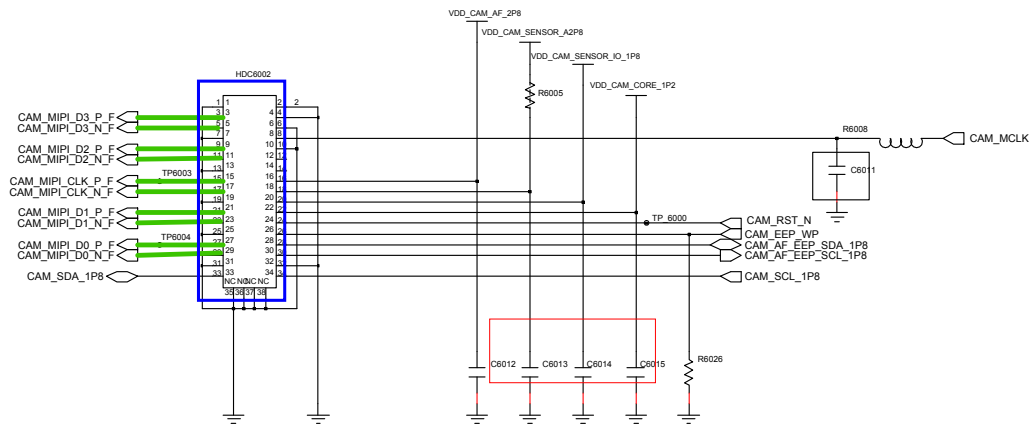


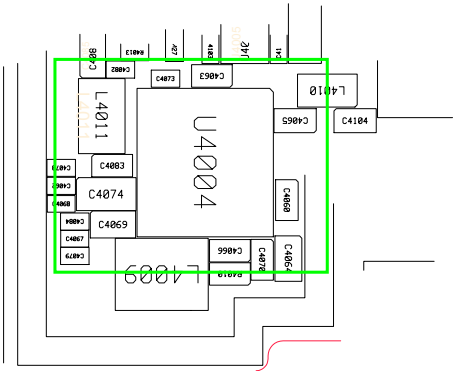
OCTA DCDC



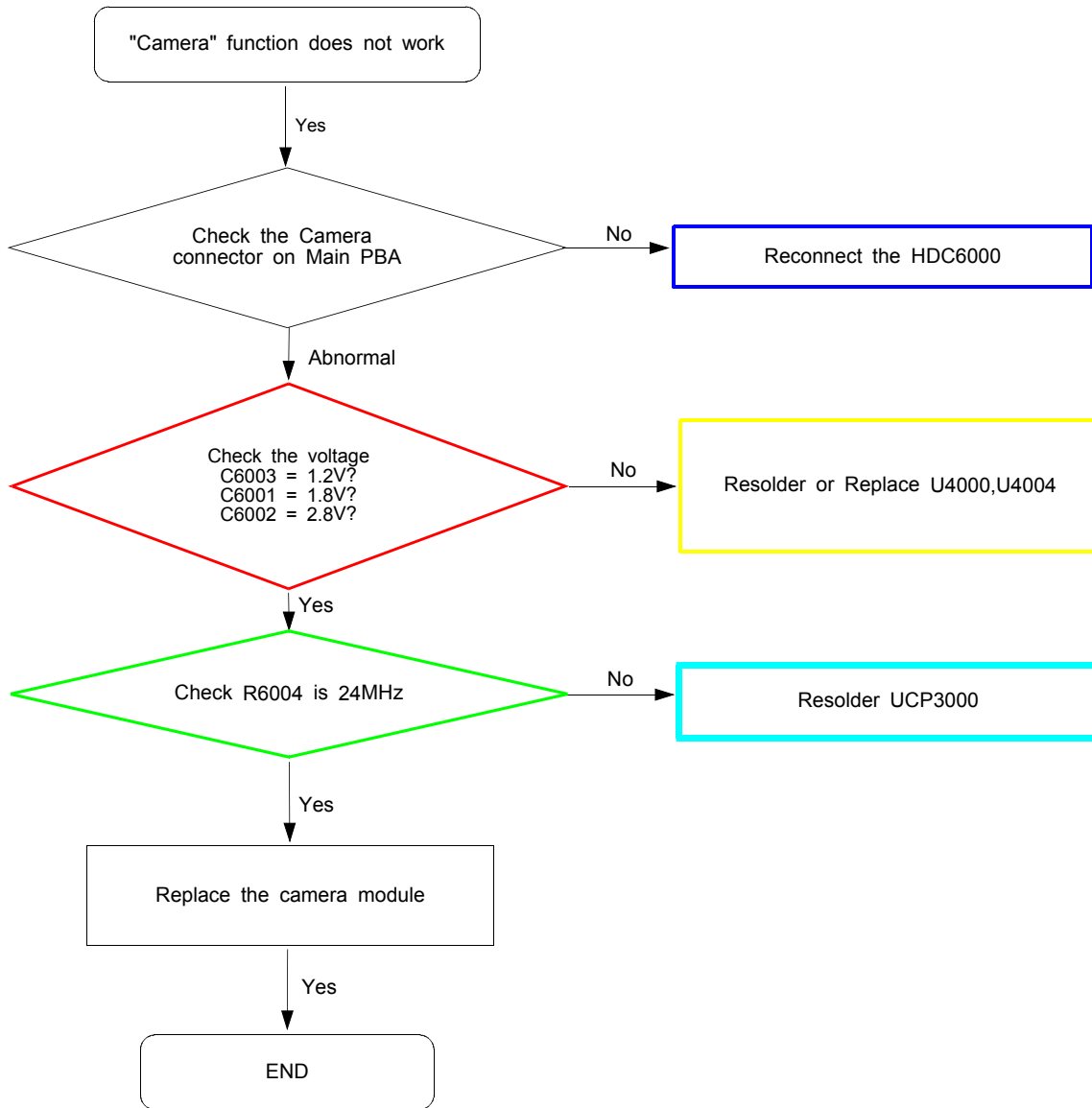
8-4-15. 13M CAM

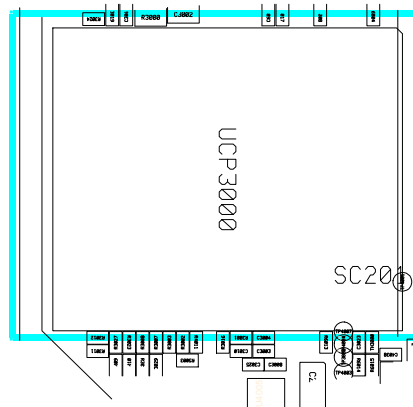
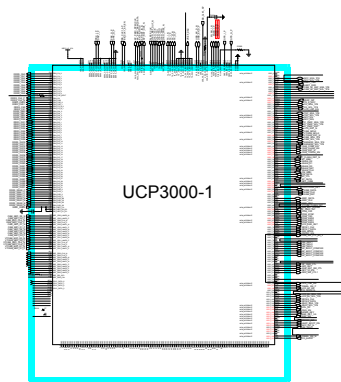
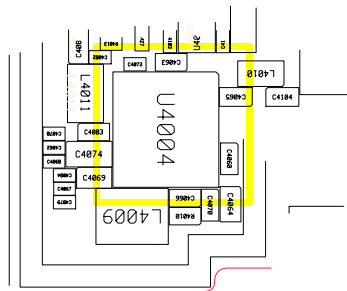
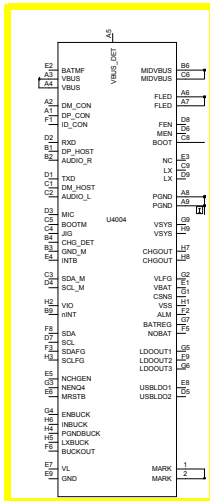
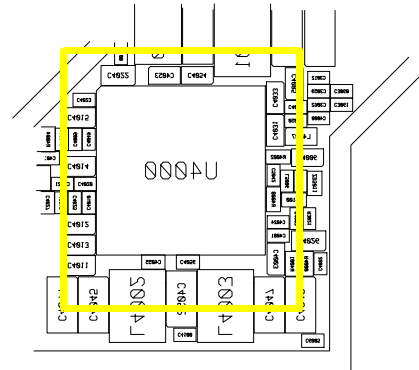
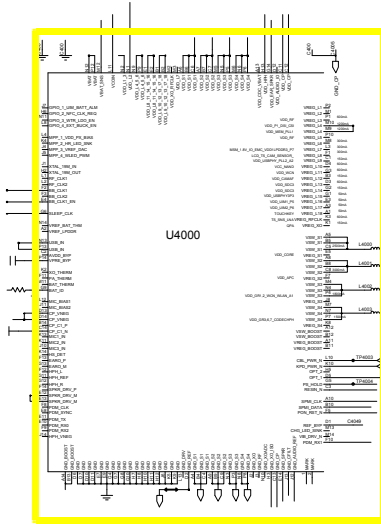




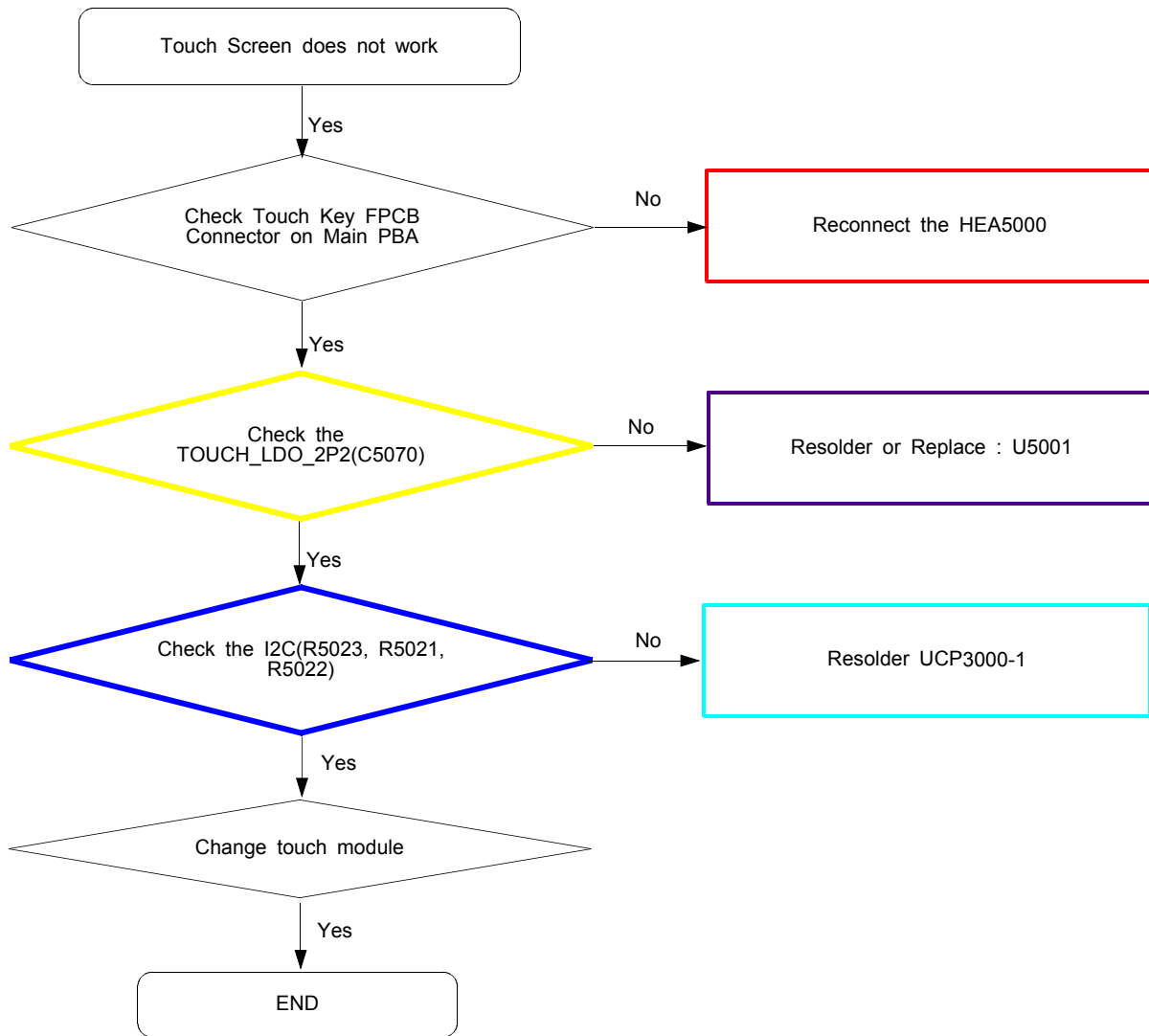


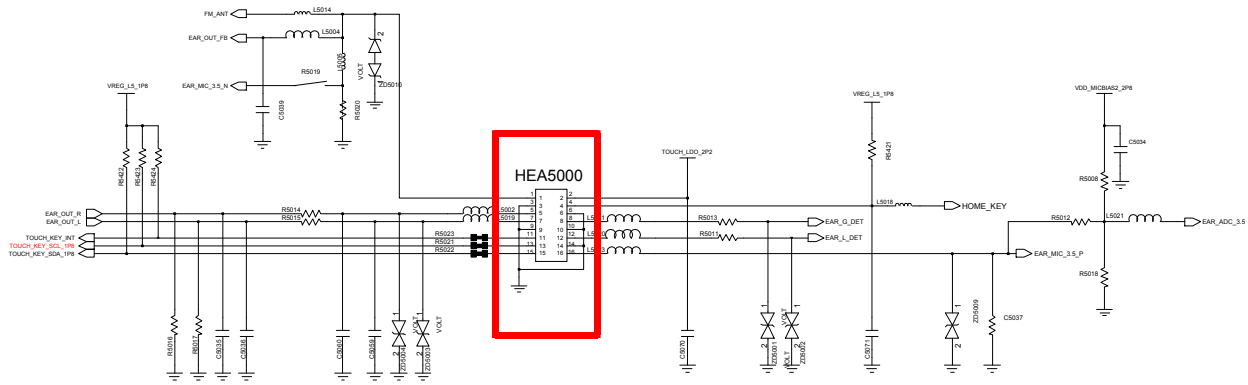
8-4-16. VT CAM



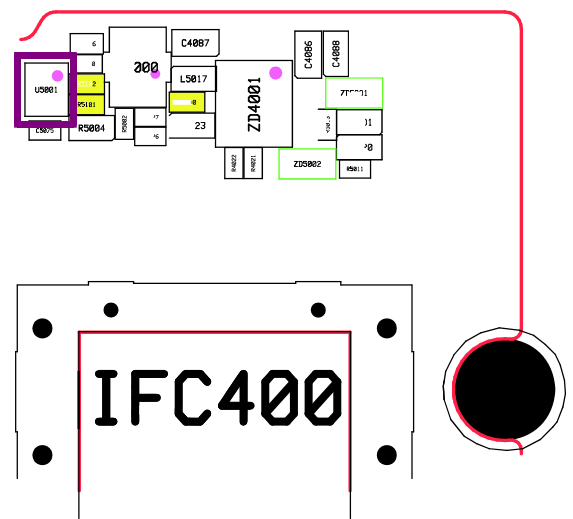
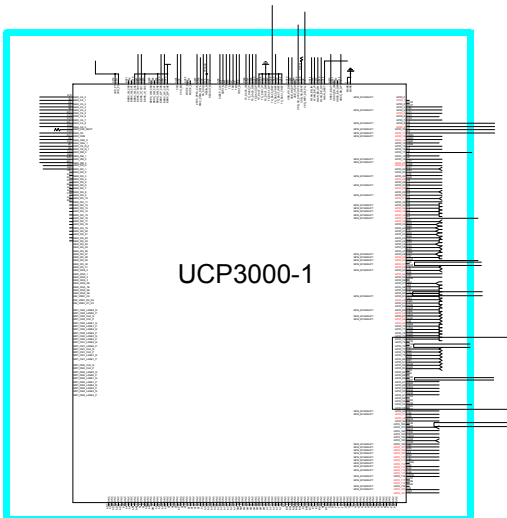
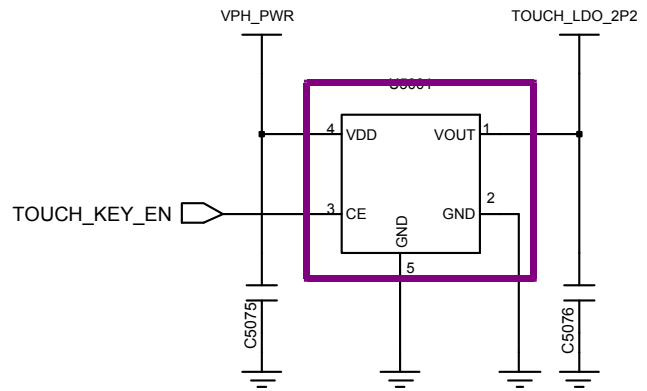
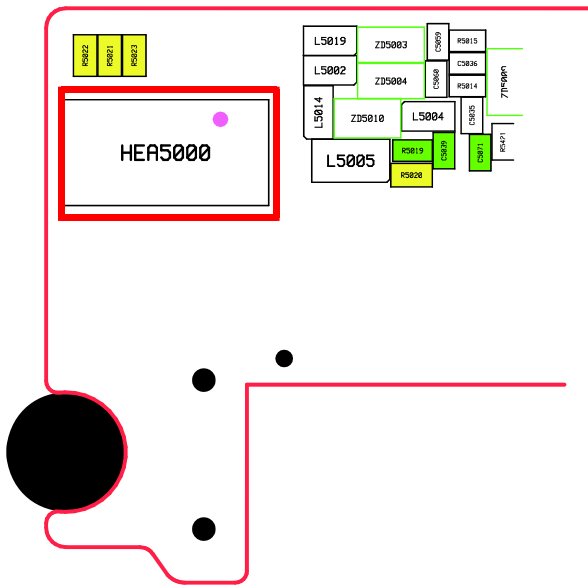


8-4-17. Touch Key FPCB

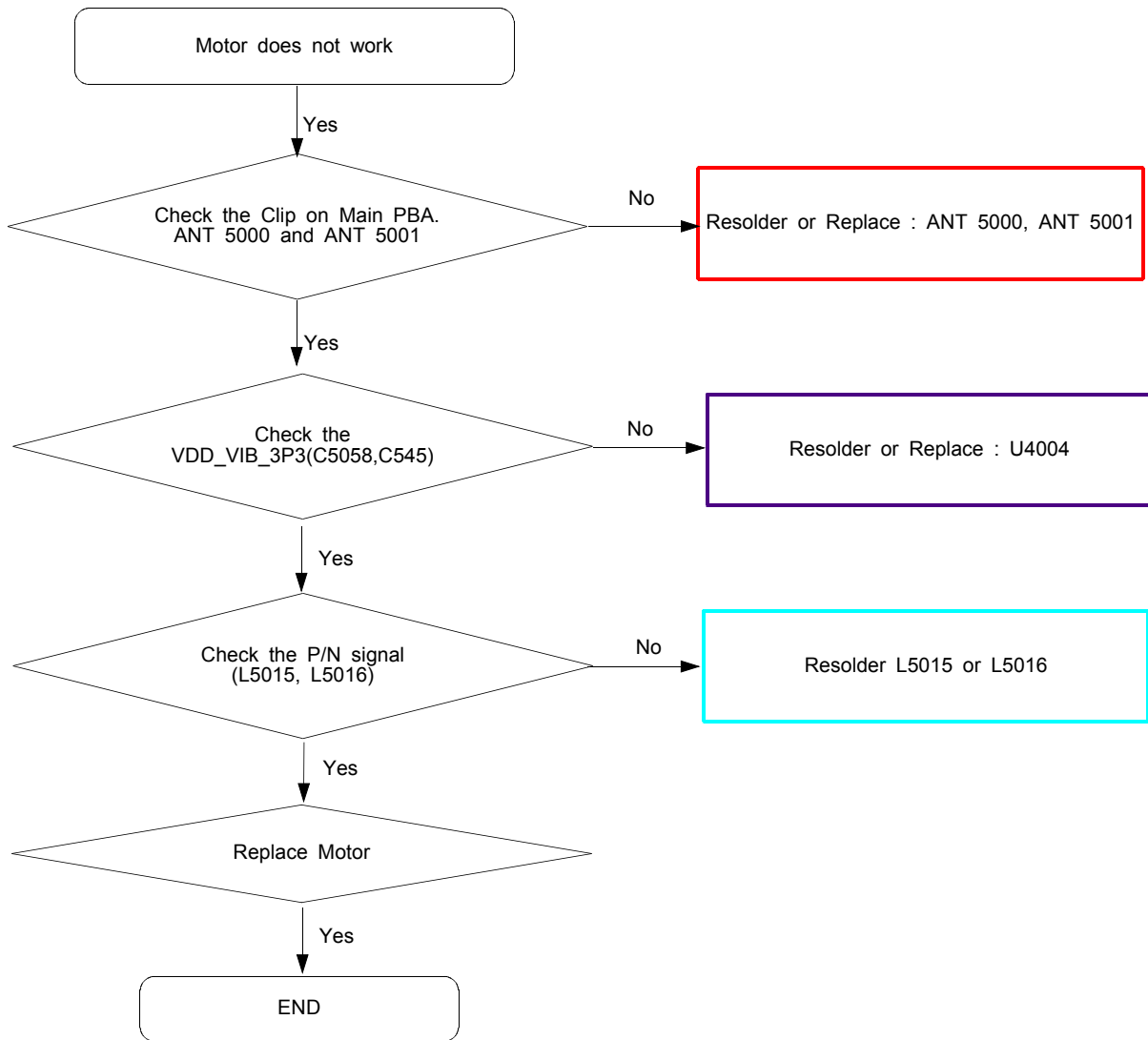


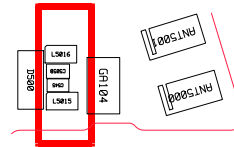
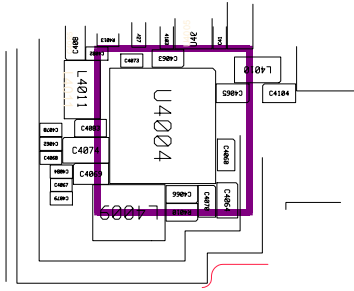
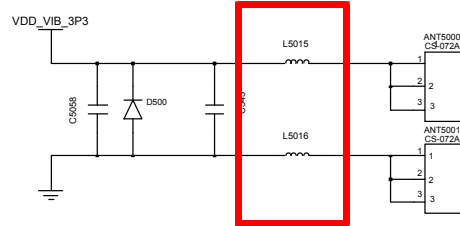
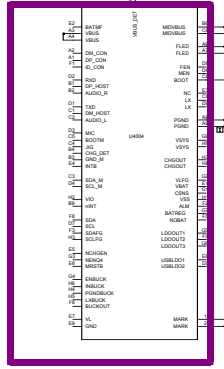


EARJACK + HOME KEY + TOUCH KEY

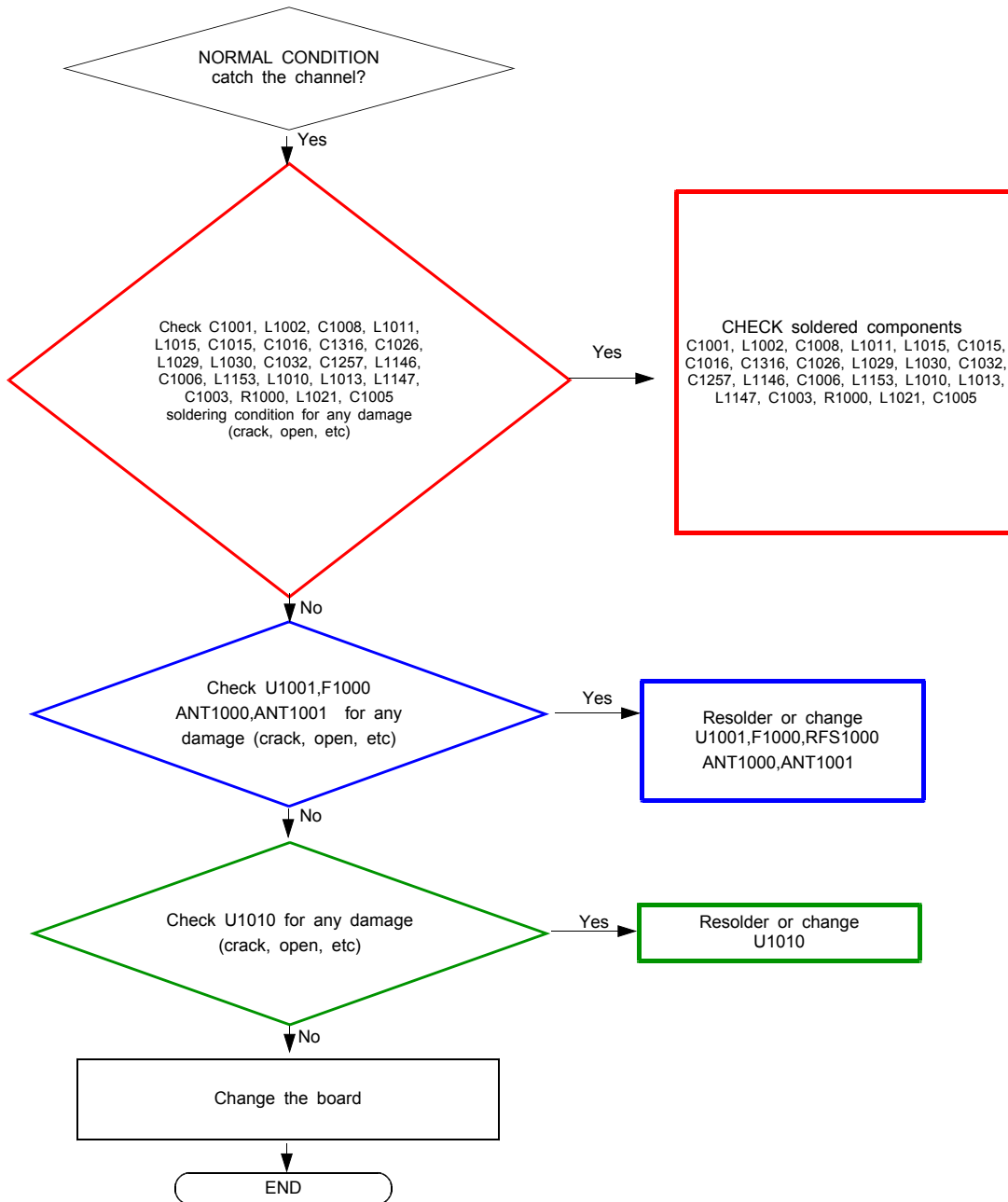


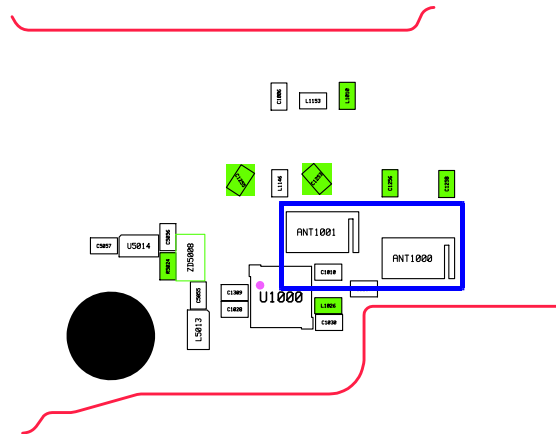
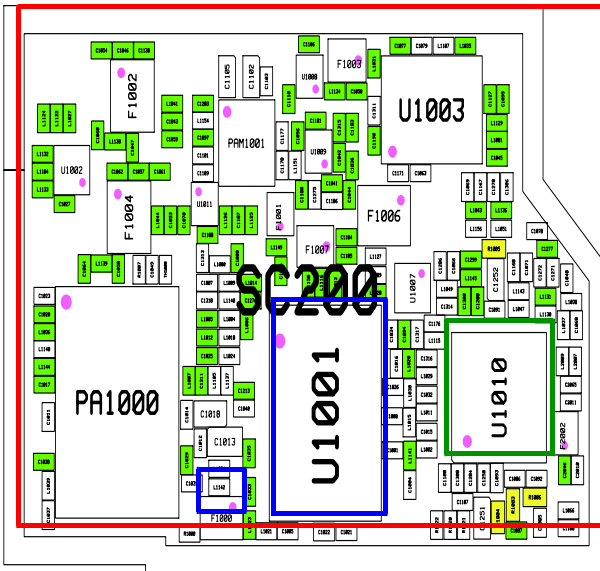
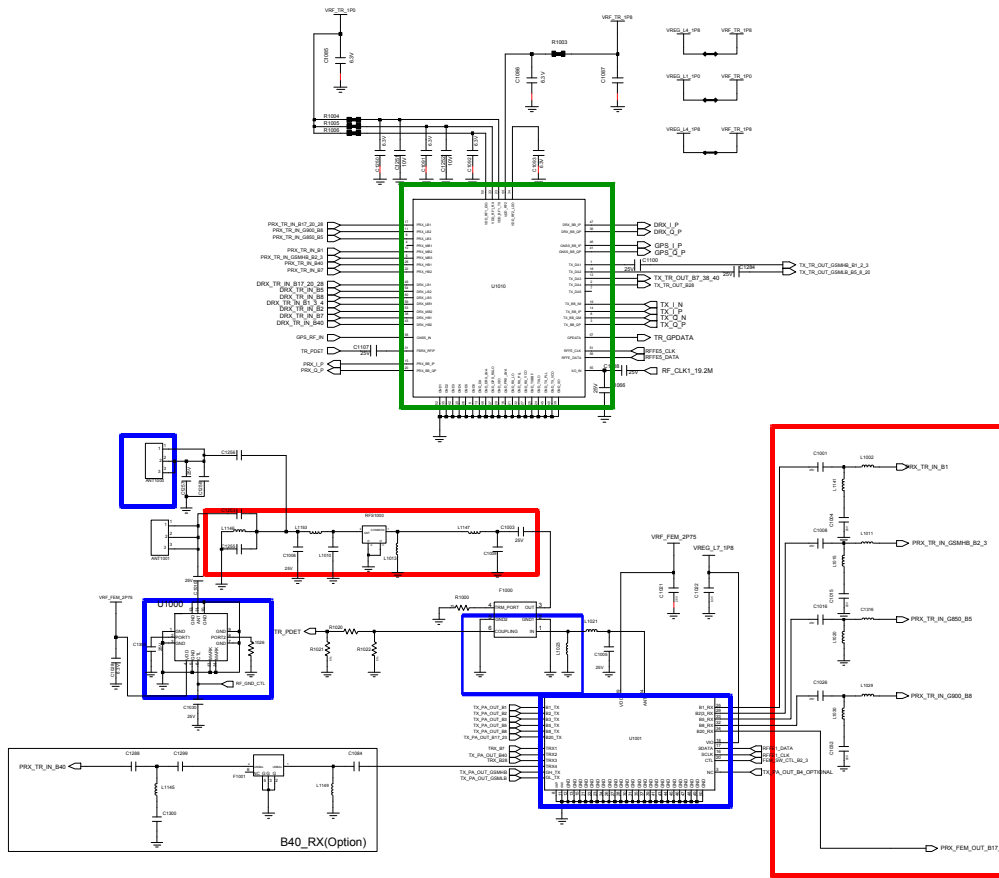
8-4-18. Motor



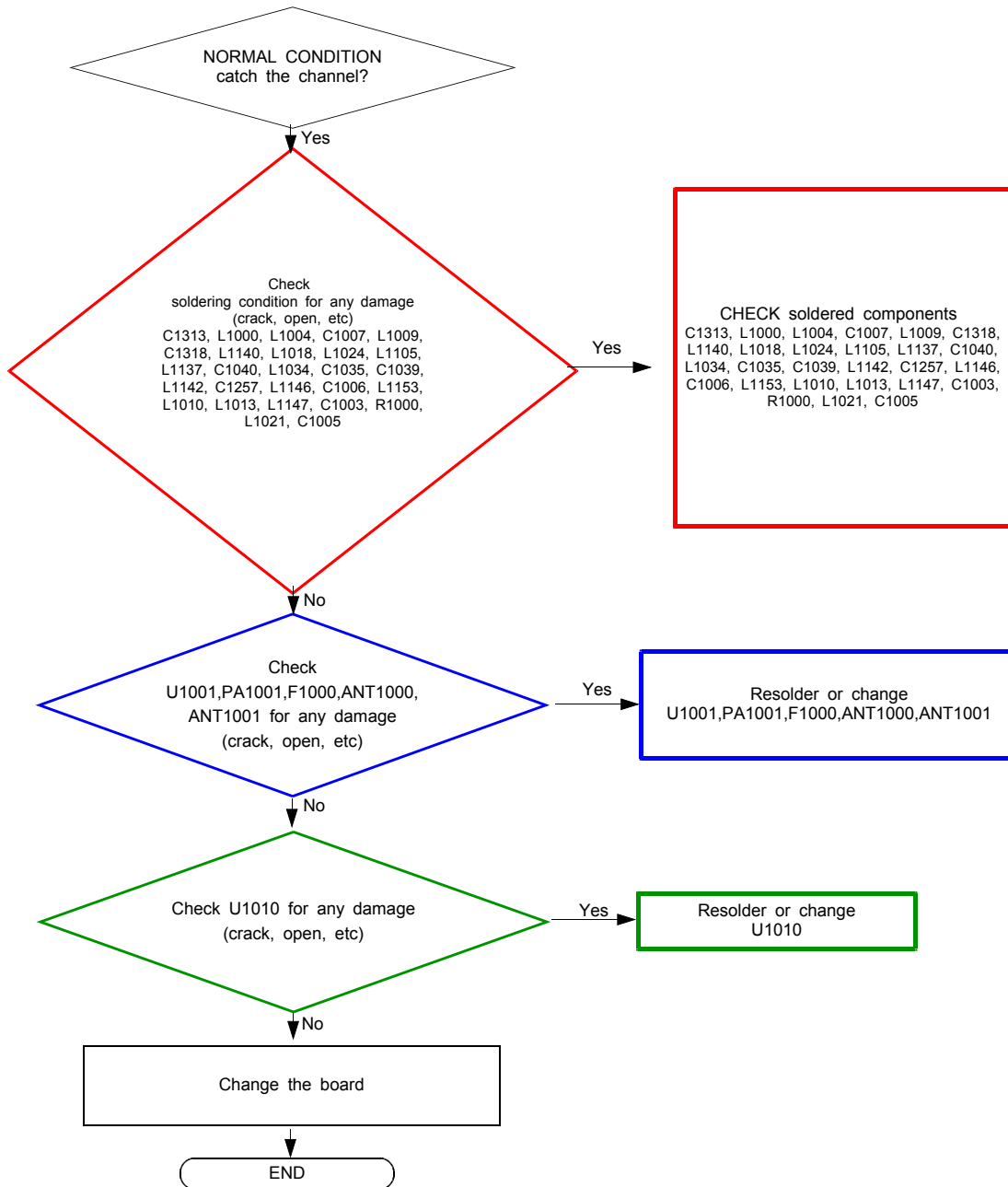


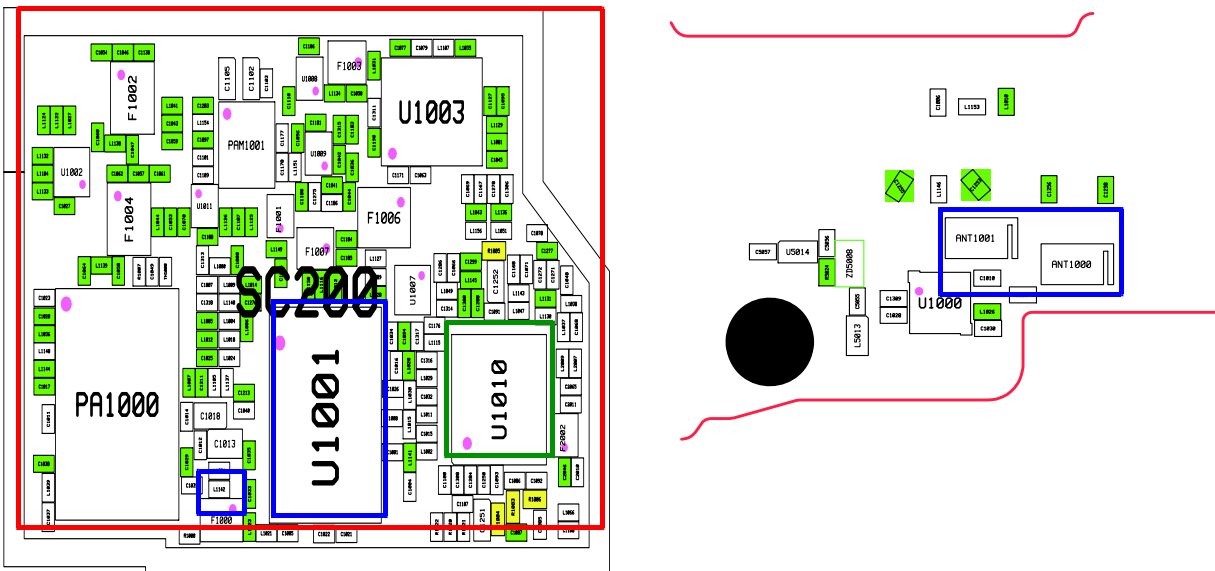
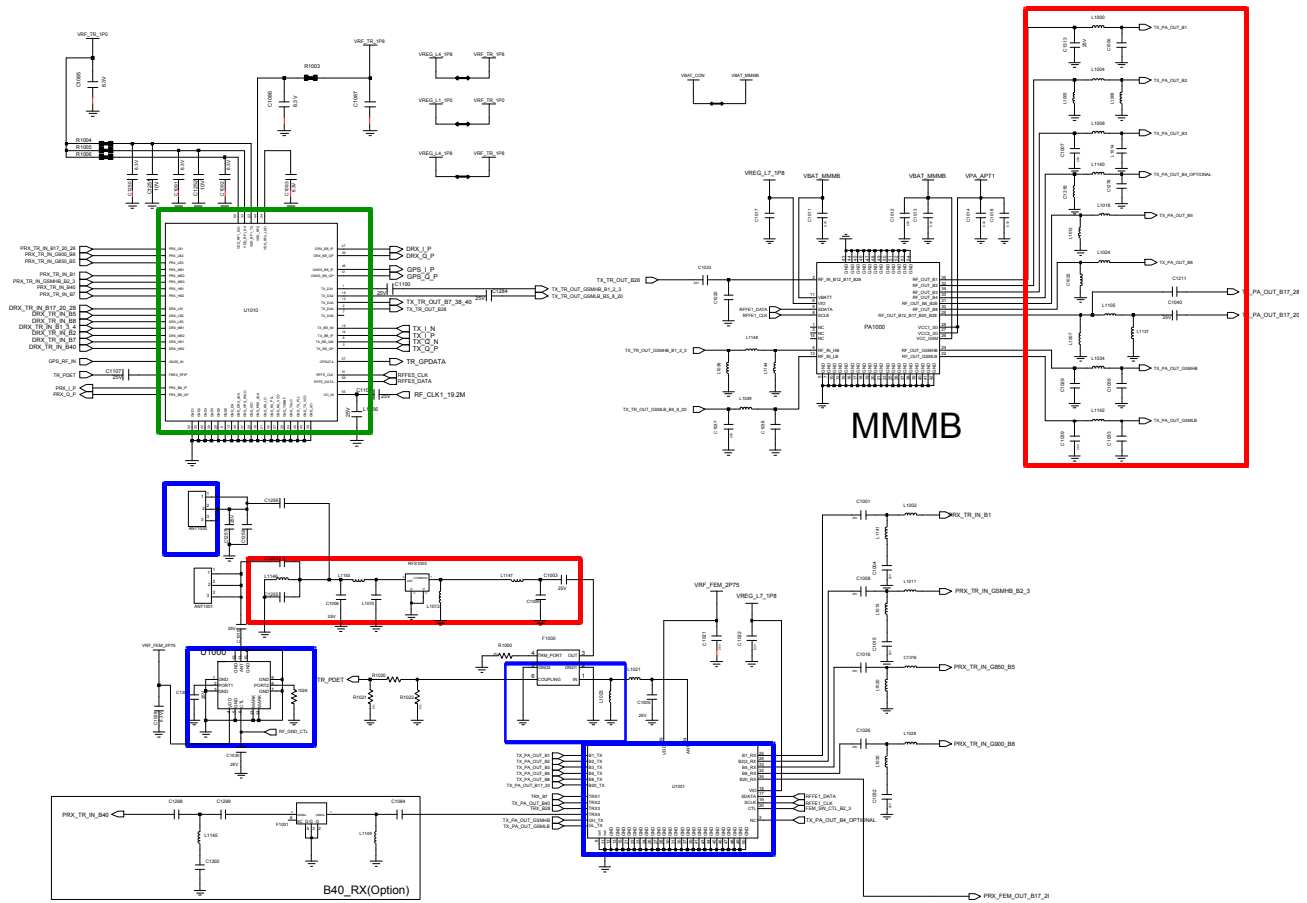
8-4-19. GSM 850,900,1800,1900 / WCDMA 1,2,5,8 / LTE 1,3,5,7,8,20 RX



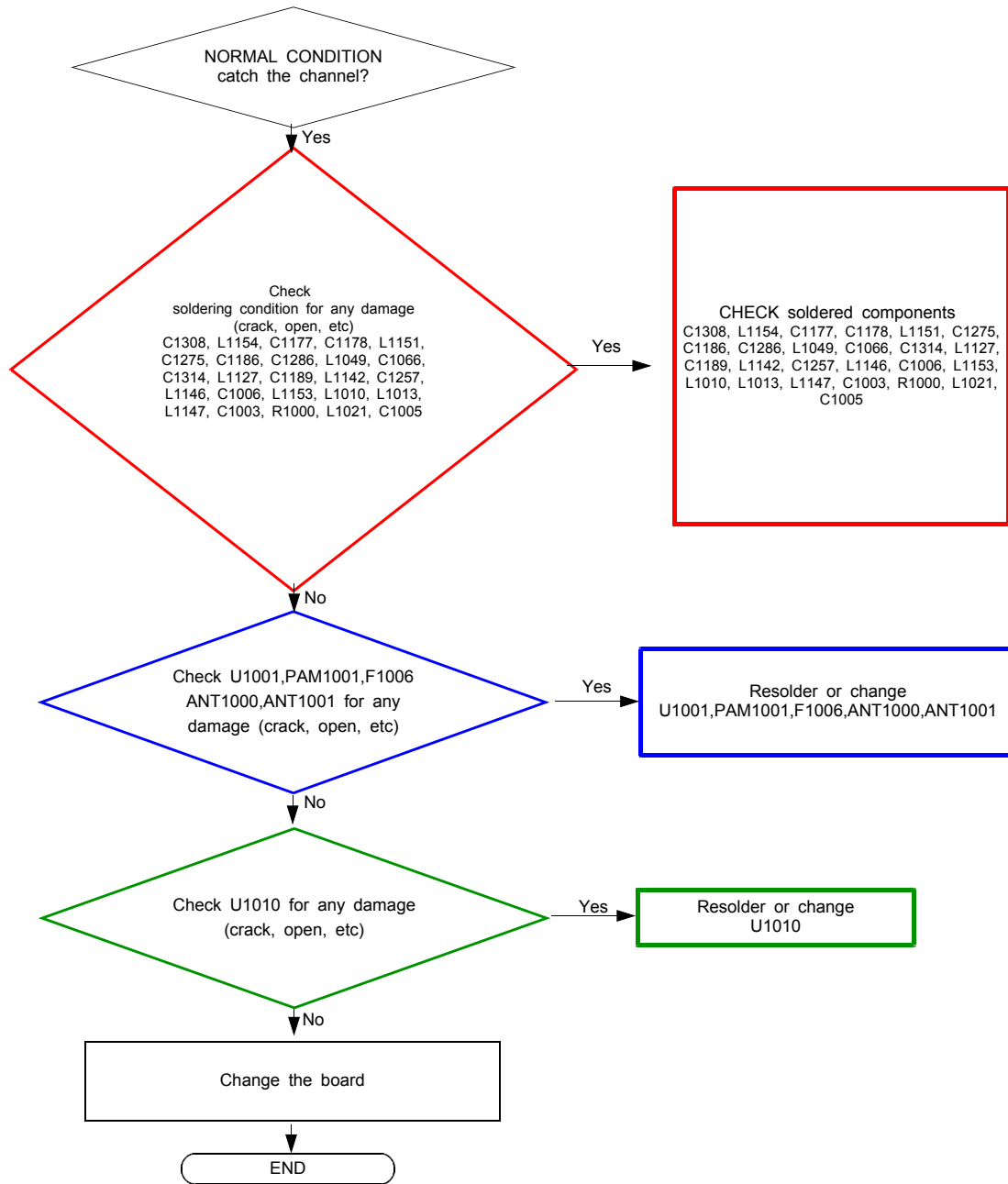


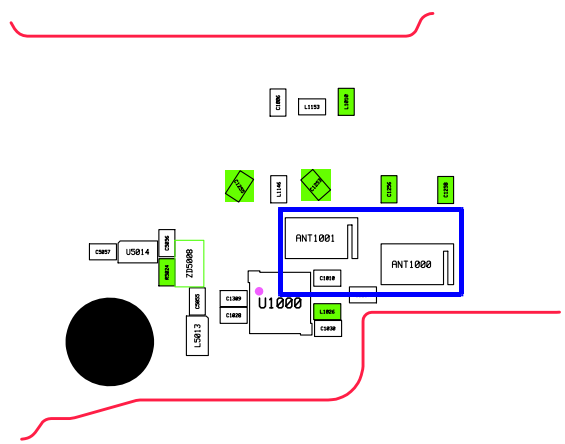
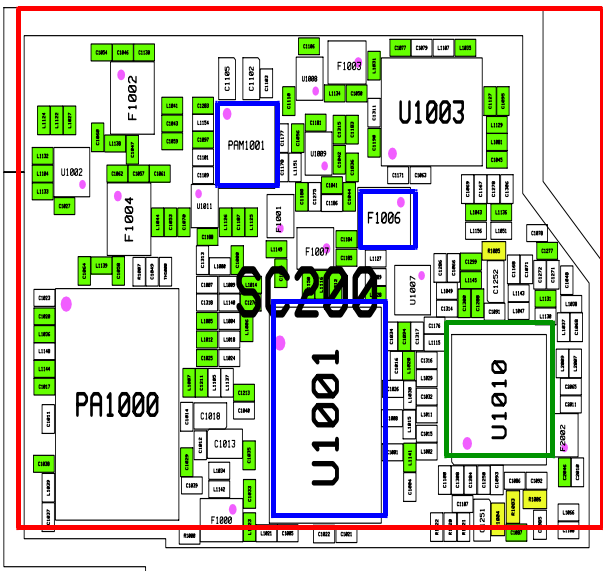
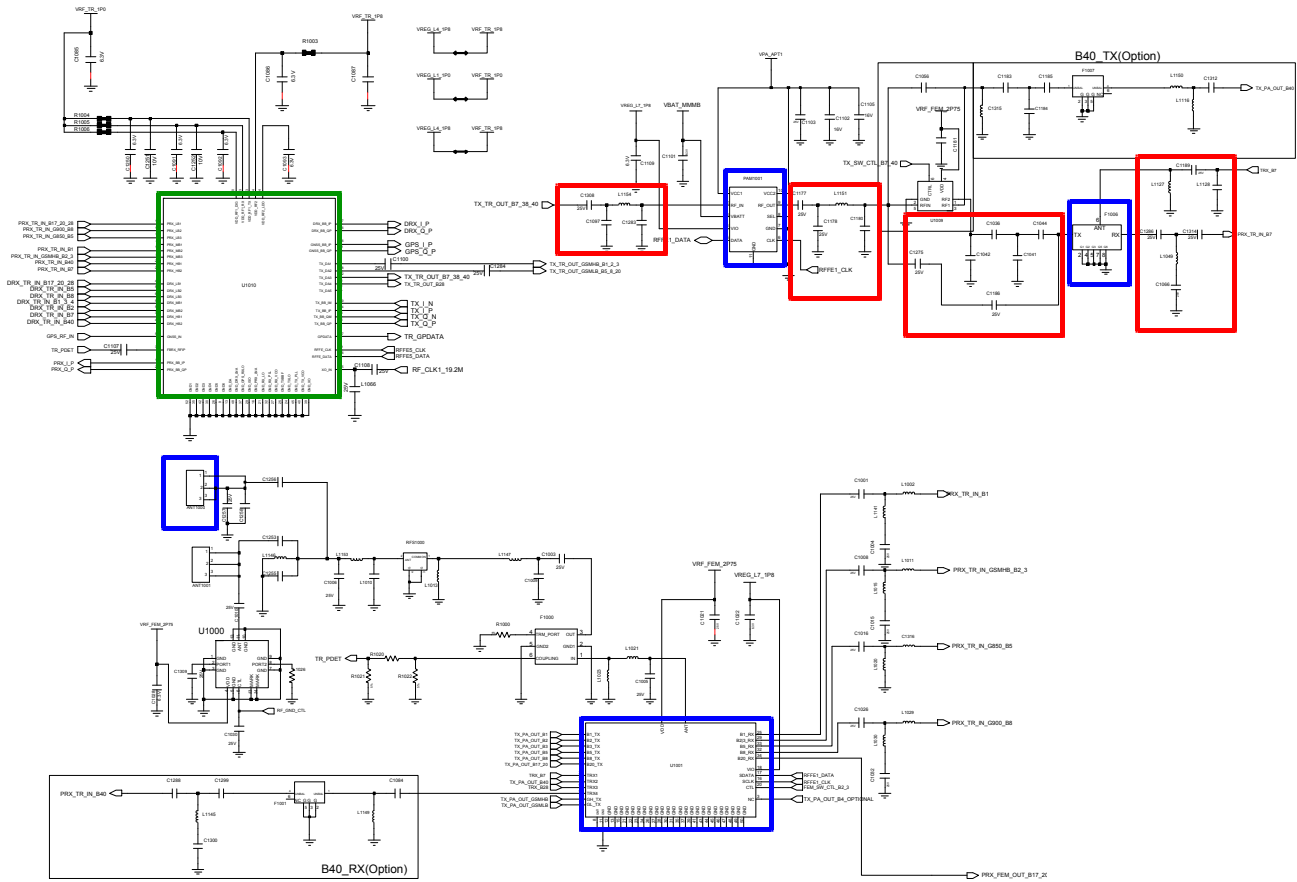
8-4-20. GSM 850,900,1800,1900 / WCDMA 1,2,5,8 / LTE 1,3,5,7,8,20 TX





8-4-21. LTE B7 TRX





Confidential and proprietary-the contents in this service guide subject to change without prior notice.

Distribution, transmission, or infringement of any content or data from this document without Samsung's written authorization is strictly prohibited.

8-5. Service Schematics

- NC point(Top view)

UCP3000(AP)

