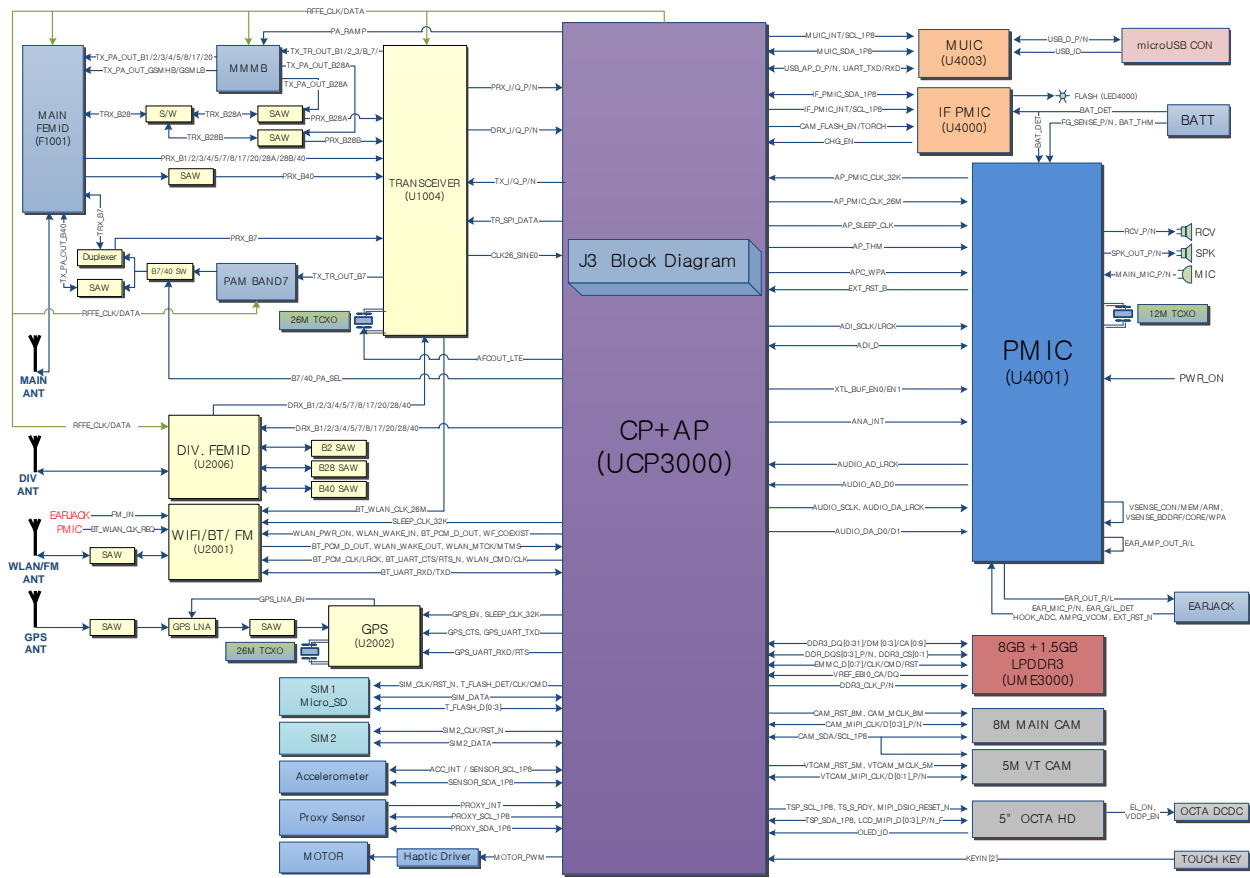


8. Level 3 Repair

8-2. Block Diagram

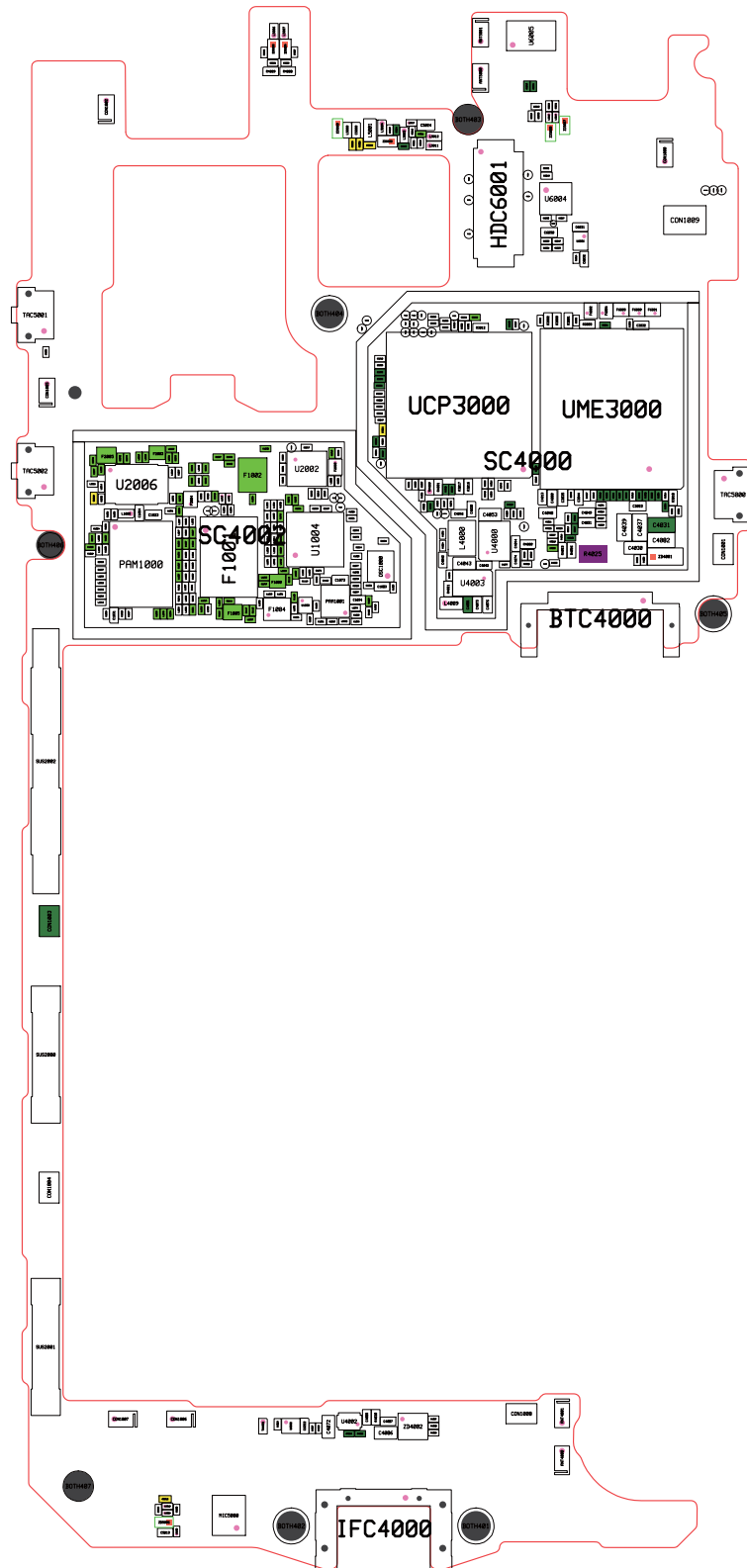


Confidential and proprietary-the contents in this service guide subject to change without prior notice

Distribution, transmission, or infringement of any content or data from this document without Samsung's written authorization is strictly prohibited.

8. Level 3 Repair

TOP

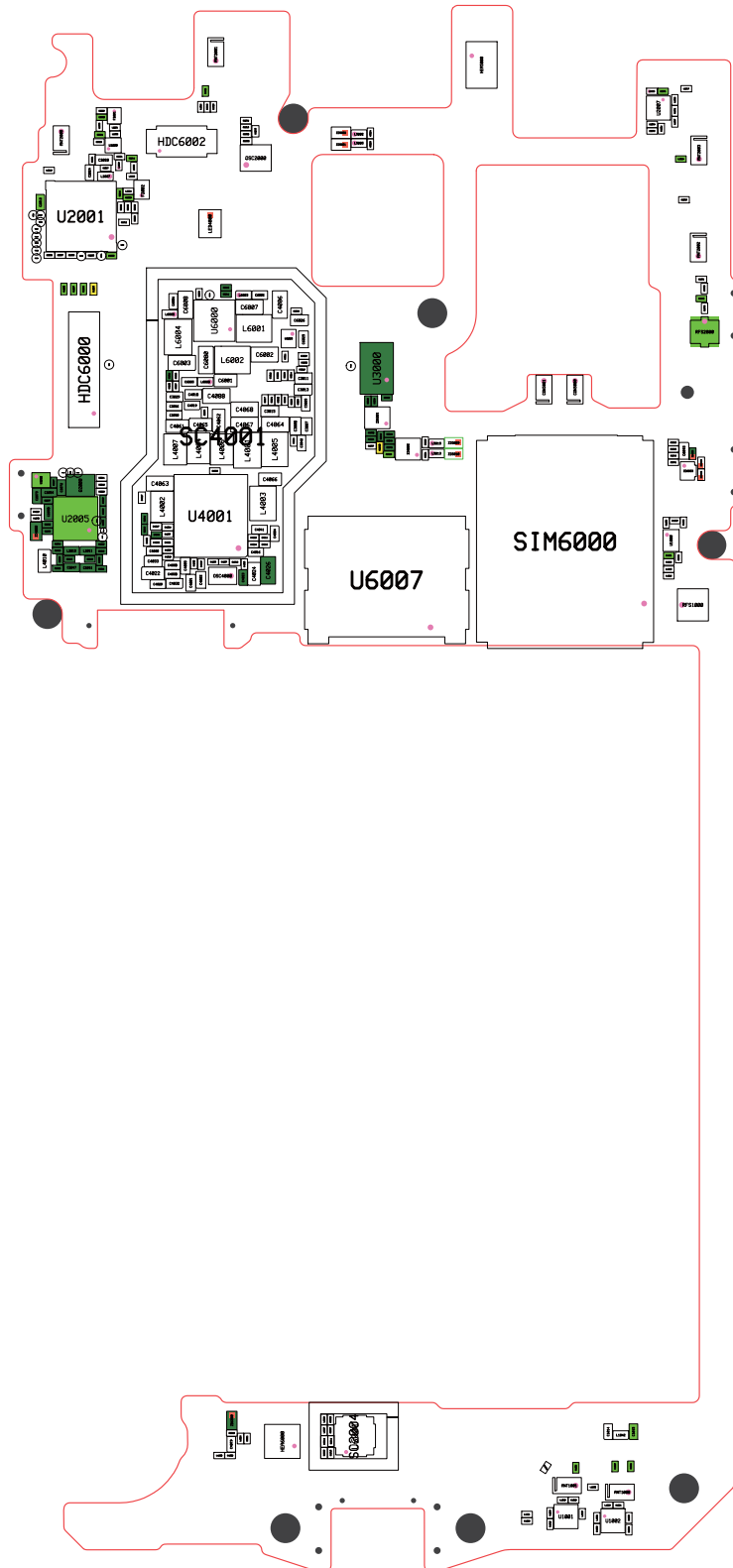


Confidential and proprietary-the contents in this service guide subject to change without prior notice

Distribution, transmission, or infringement of any content or data from this document without Samsung's written authorization is strictly prohibited.

8. Level 3 Repair

BOTTOM

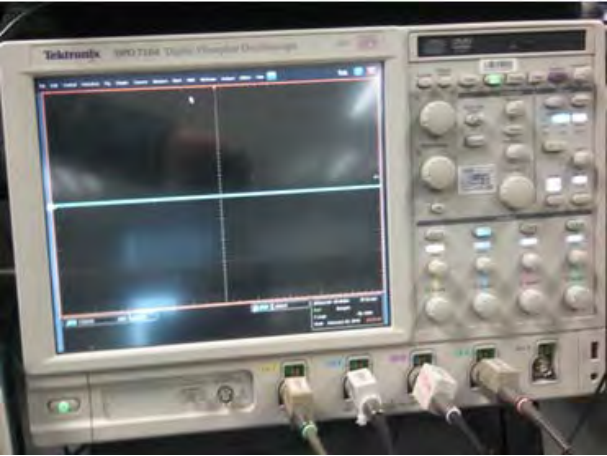



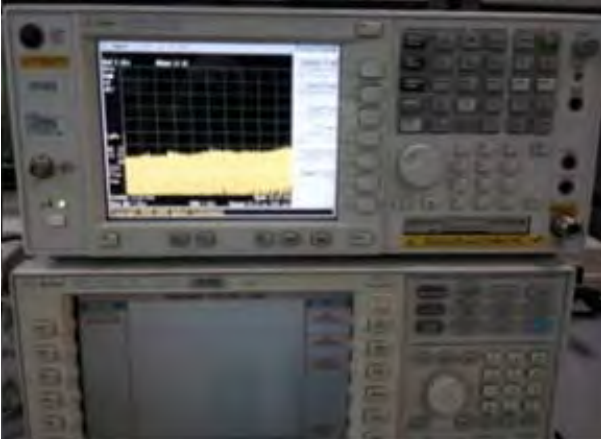



Confidential and proprietary-the contents in this service guide subject to change without prior notice

Distribution, transmission, or infringement of any content or data from this document without Samsung's written authorization is strictly prohibited.

8. Level 3 Repair

8-3. Flow Chart of Troubleshooting

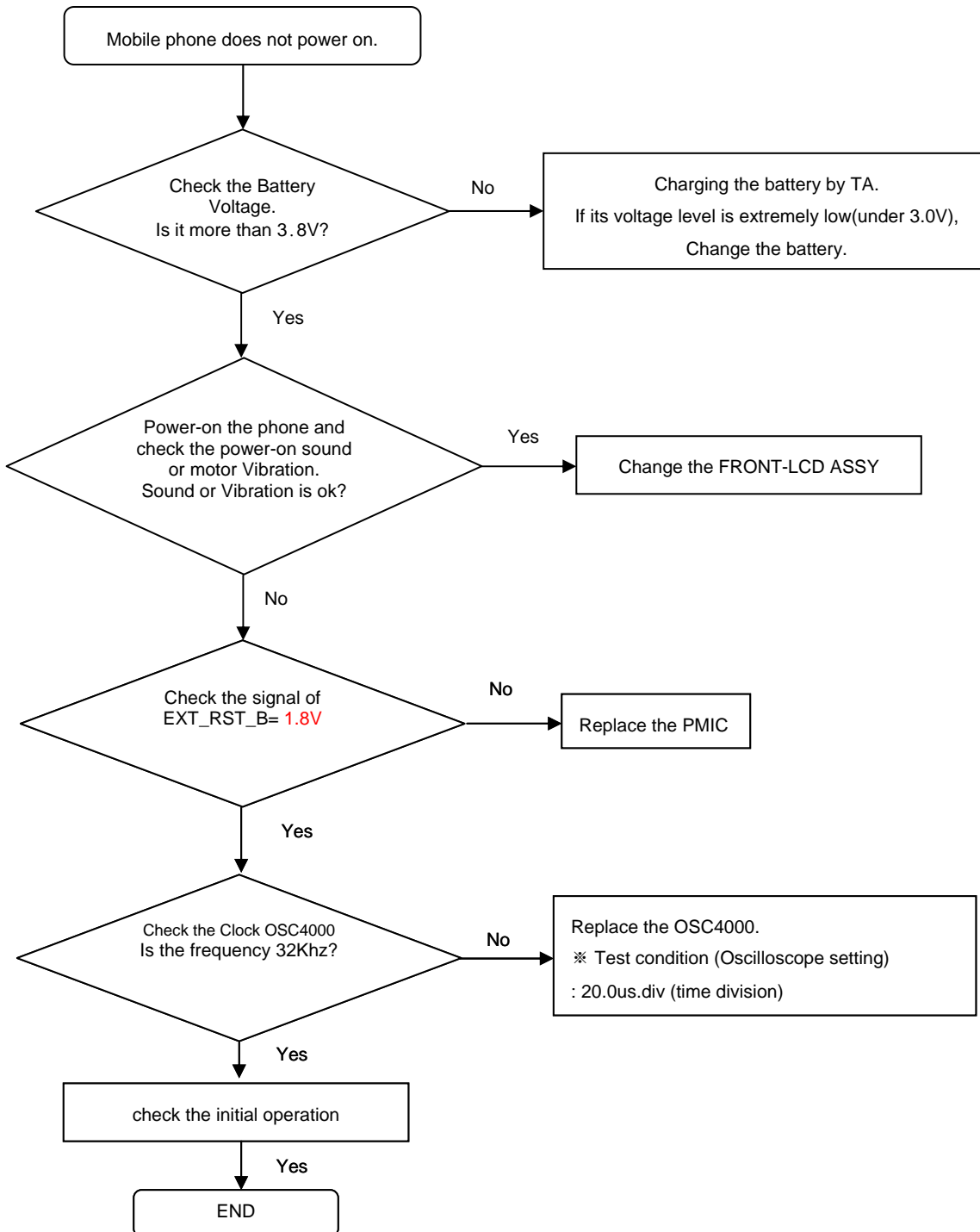
	
<p>Oscilloscope</p>	<p>Digital Multimeter</p>
	
<p>Power Supply</p>	<p>+ driver, ESD Safe Tweezer</p>
	
<p>8960 & Spectrum Analyzer</p>	<p>Soldering iron</p>

Confidential and proprietary-the contents in this service guide subject to change without prior notice

Distribution, transmission, or infringement of any content or data from this document without Samsung's written authorization is strictly prohibited.

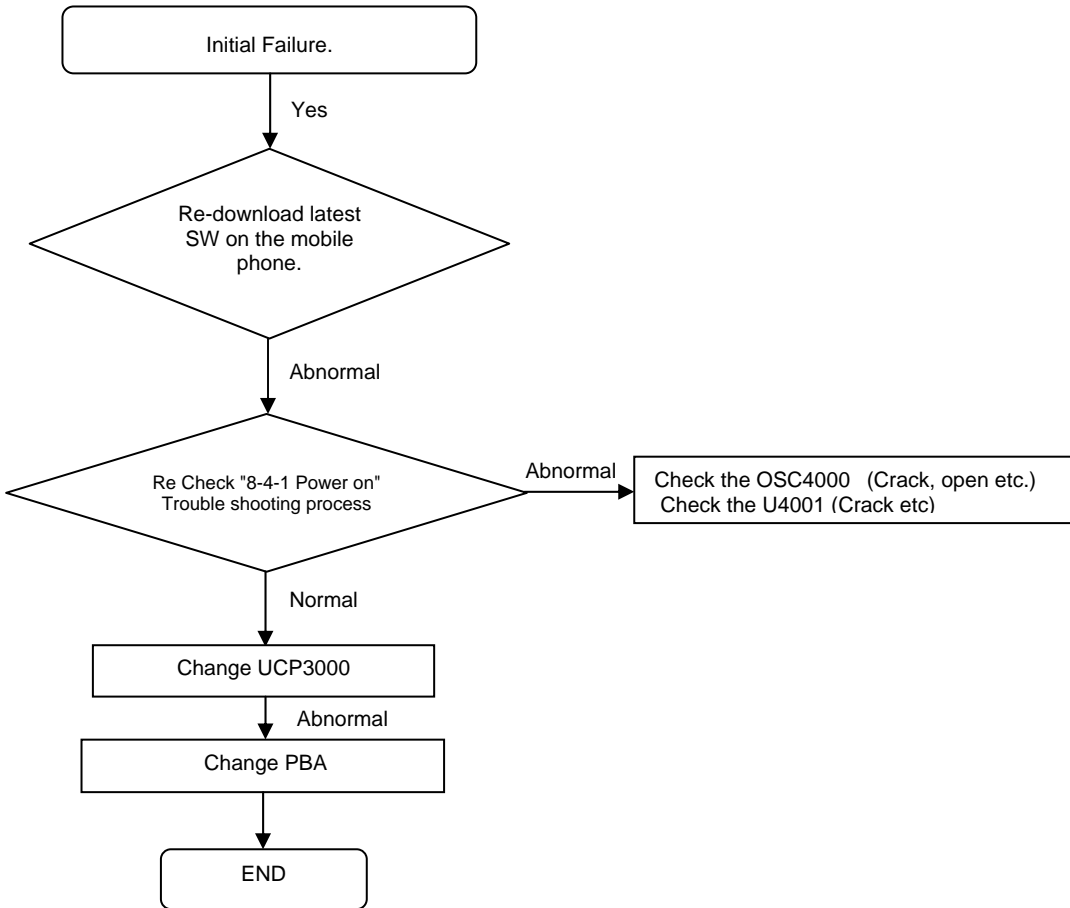
8. Level 3 Repair

8-4. Power On



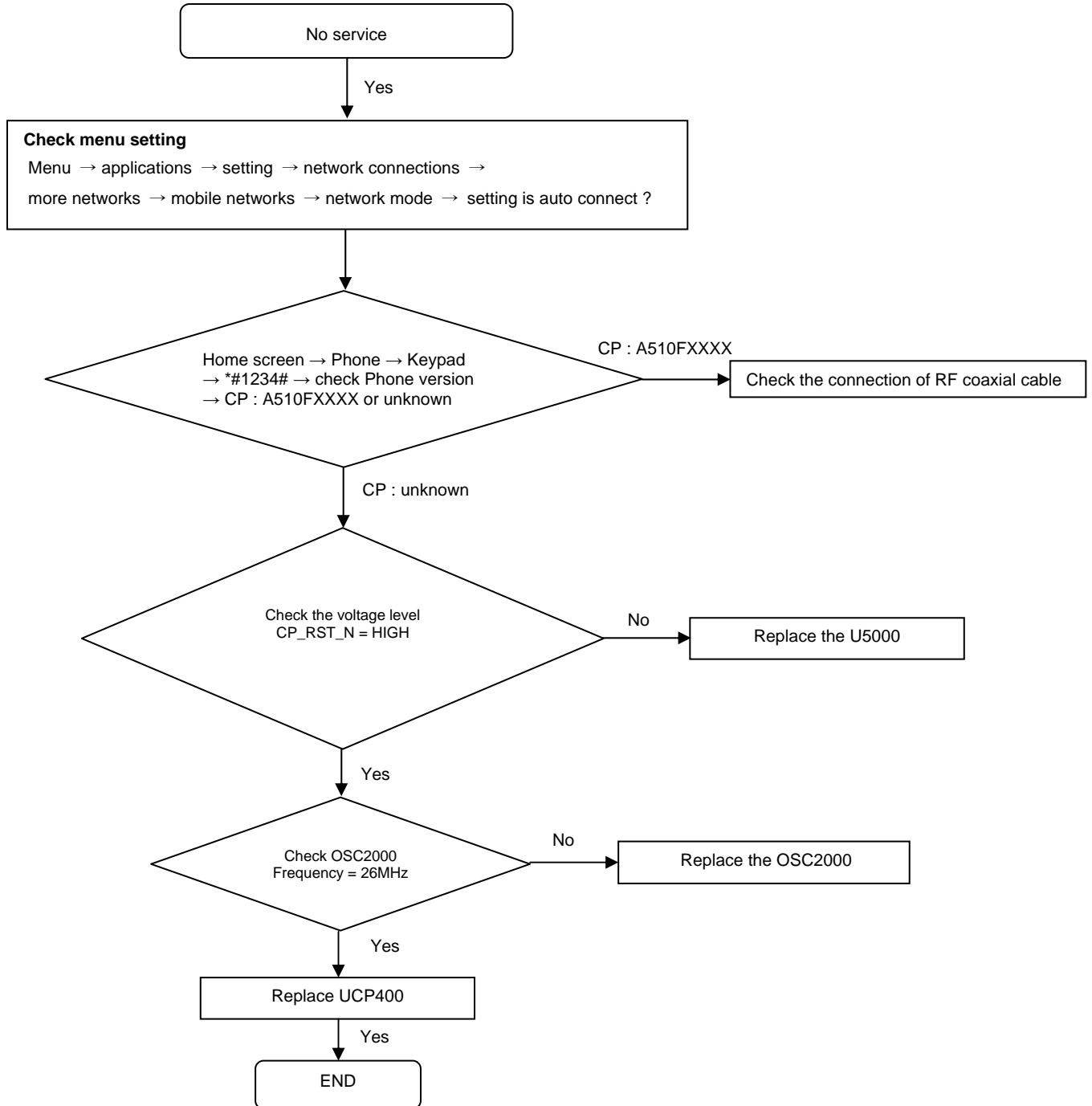
8. Level 3 Repair

8-4-2. Initial



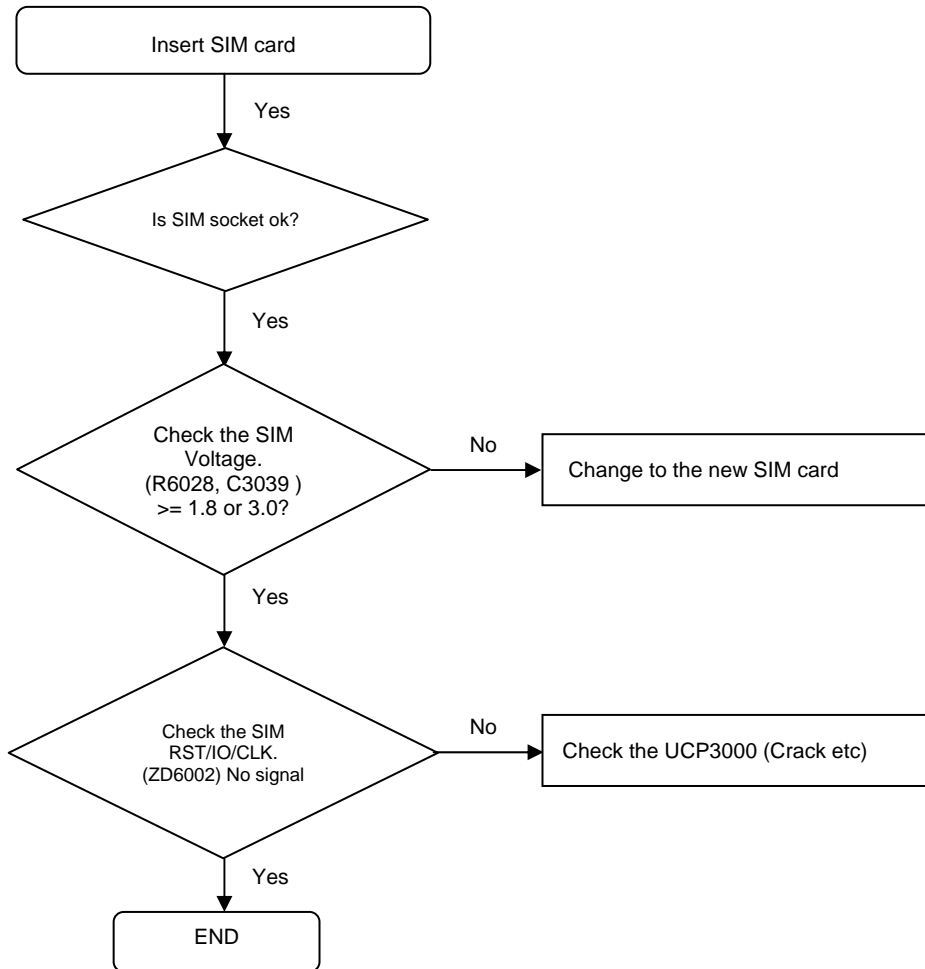
8. Level 3 Repair

8-4-3. No Service



8. Level 3 Repair

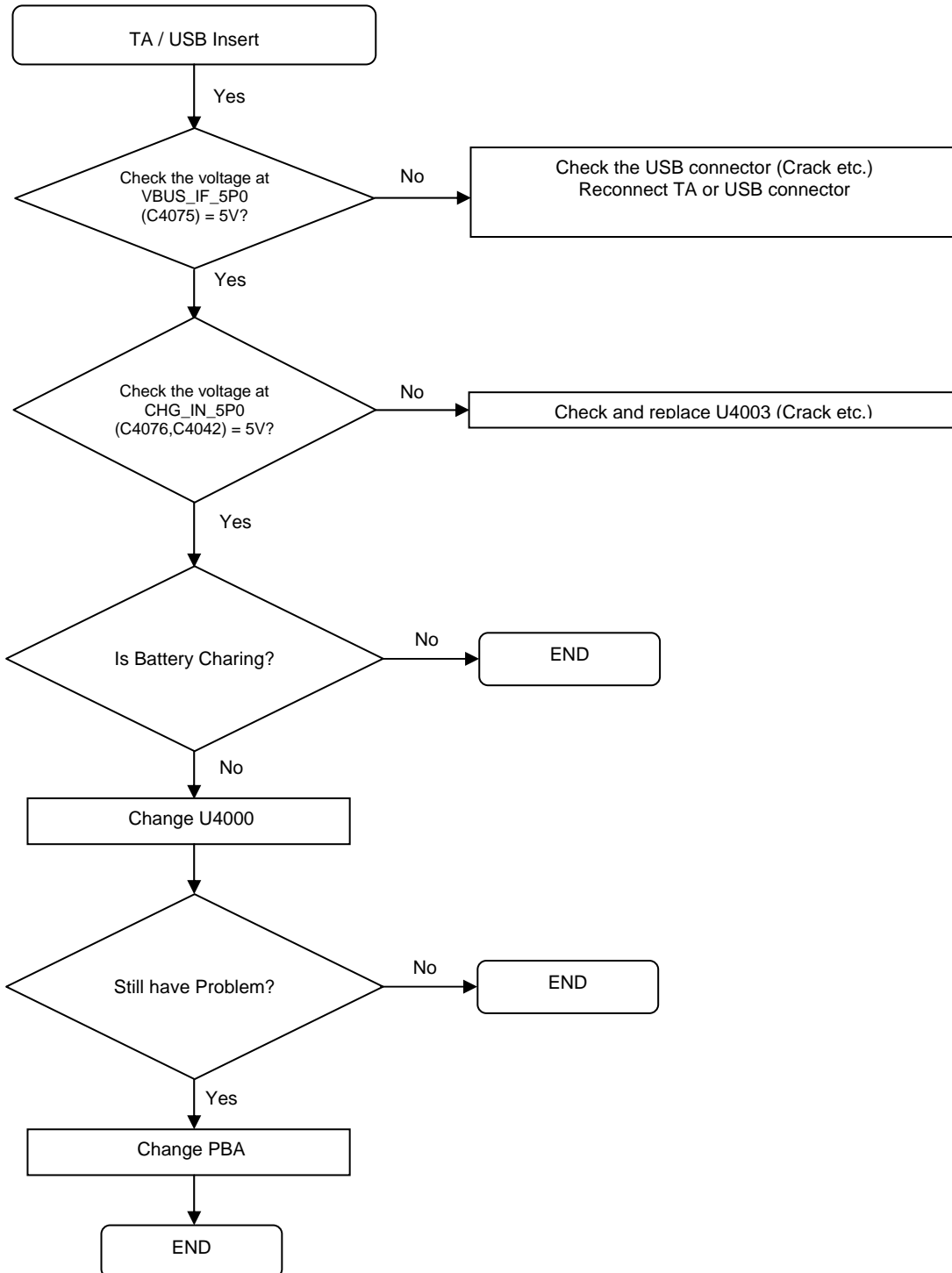
8-4-4. Sim Part



8. Level 3 Repair

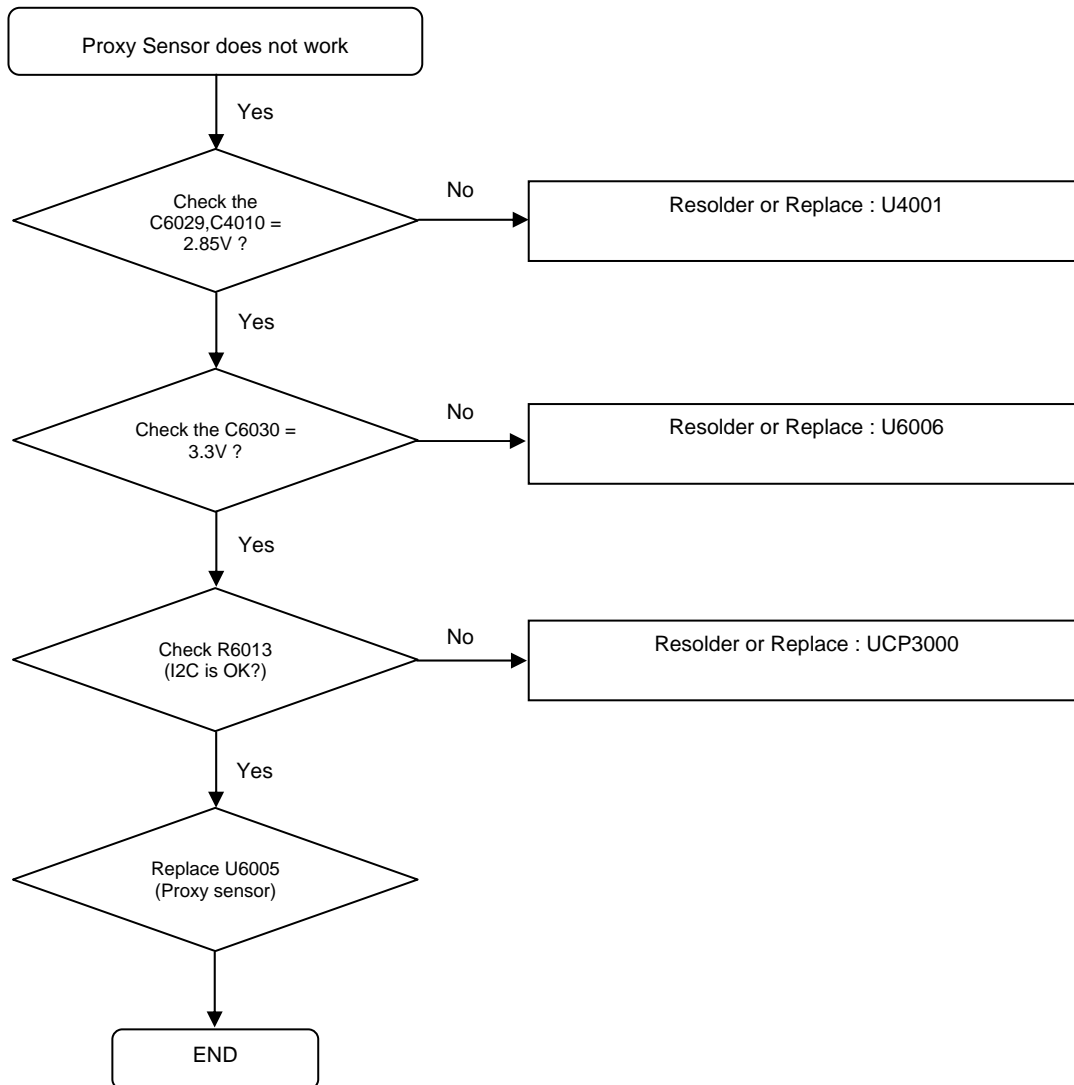
8-4-5. Charging Part

- First of all, Please check the battery status.



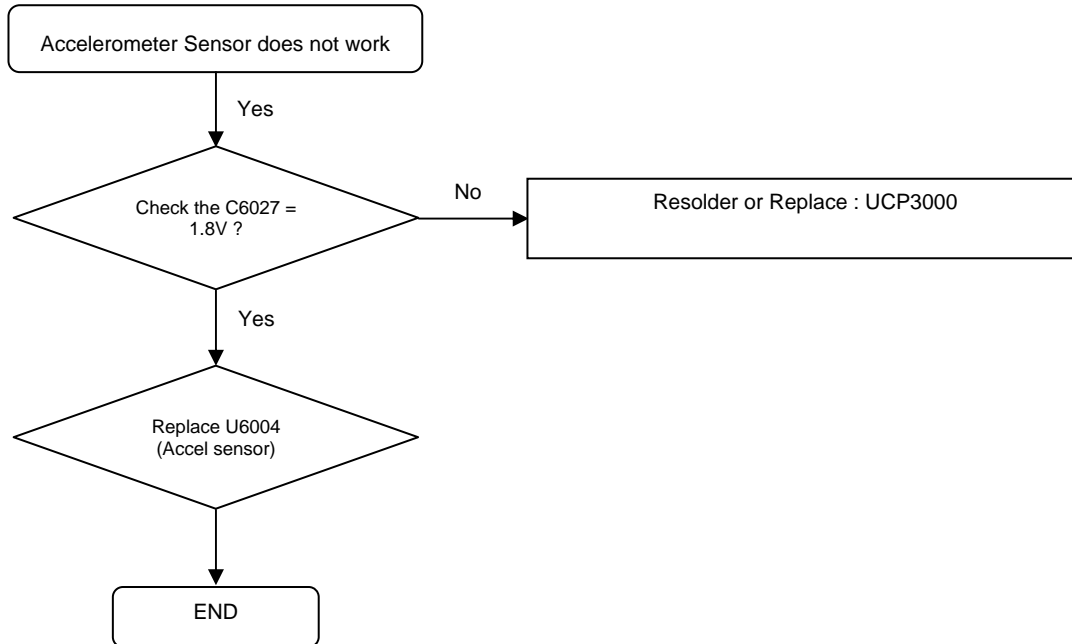
8. Level 3 Repair

8-4-6. Proxy Sensor



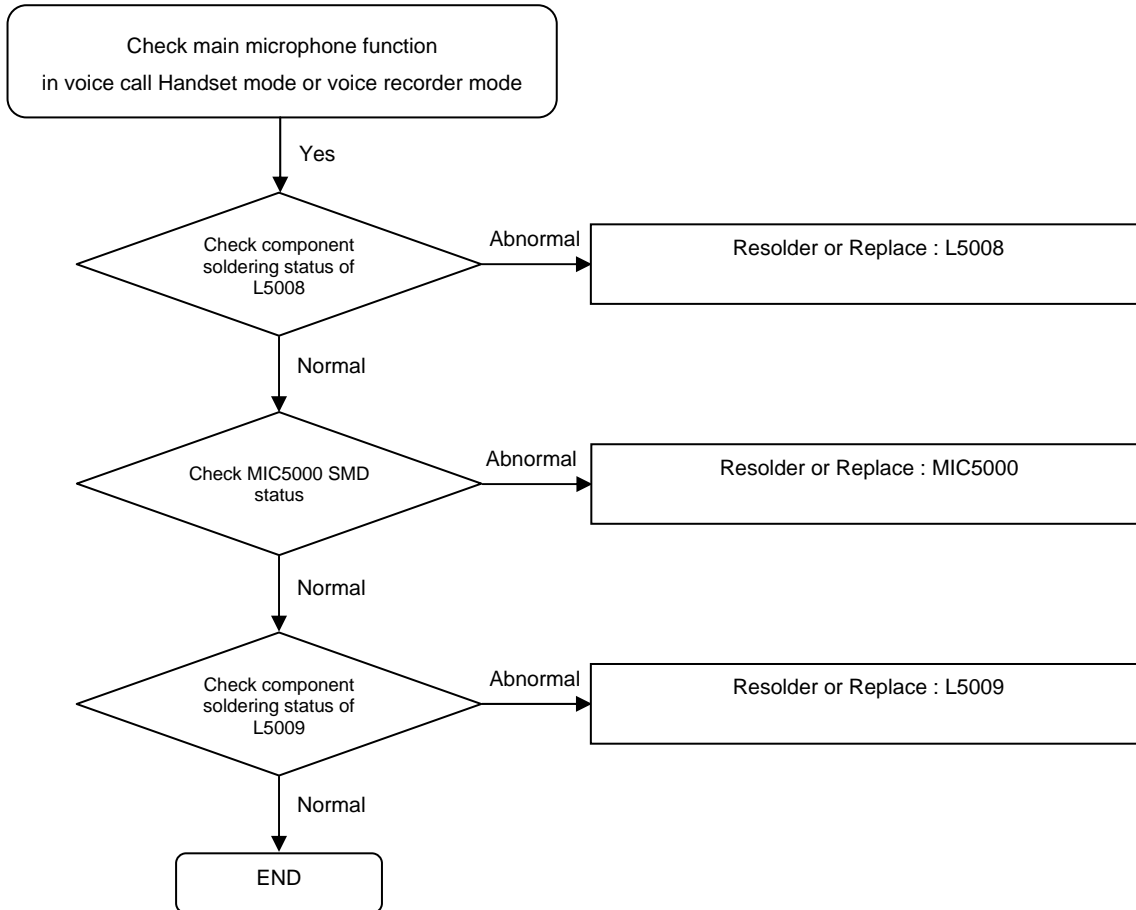
8. Level 3 Repair

8-4-7. Accel Sensor



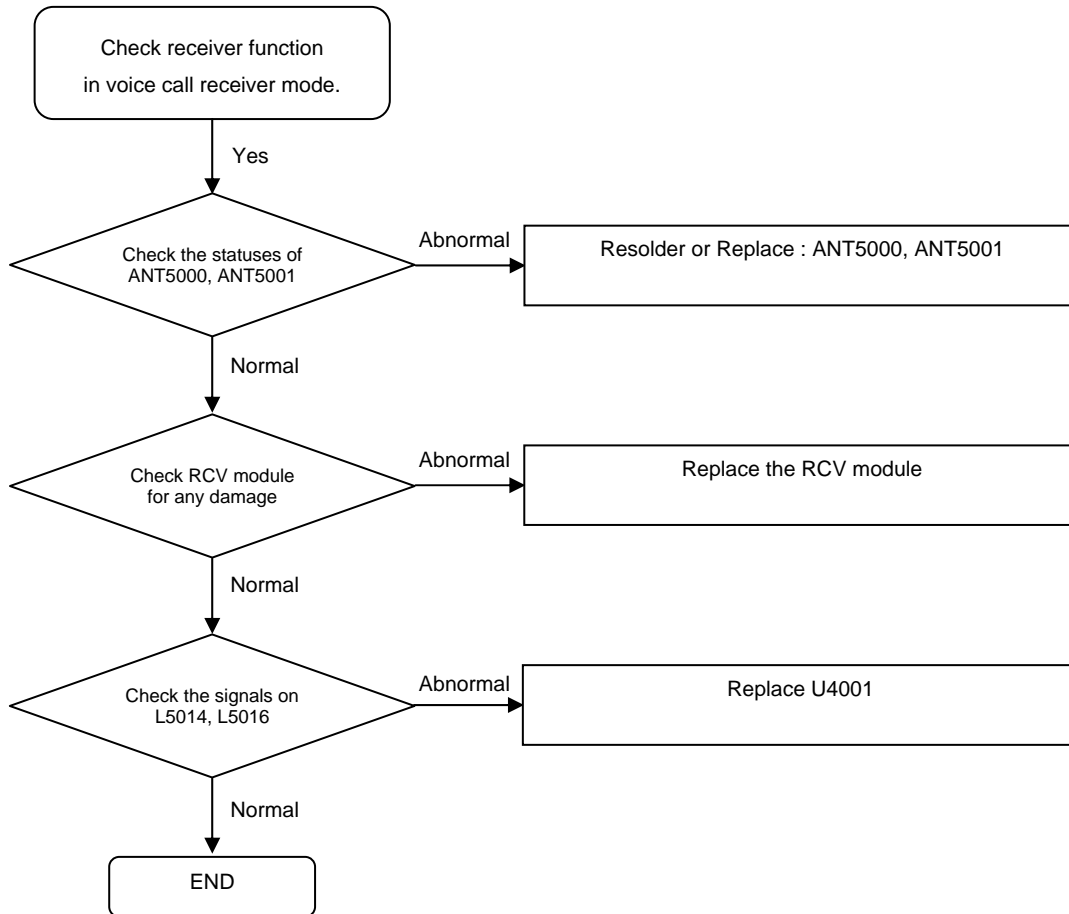
8. Level 3 Repair

8-4-8. Microphone Part



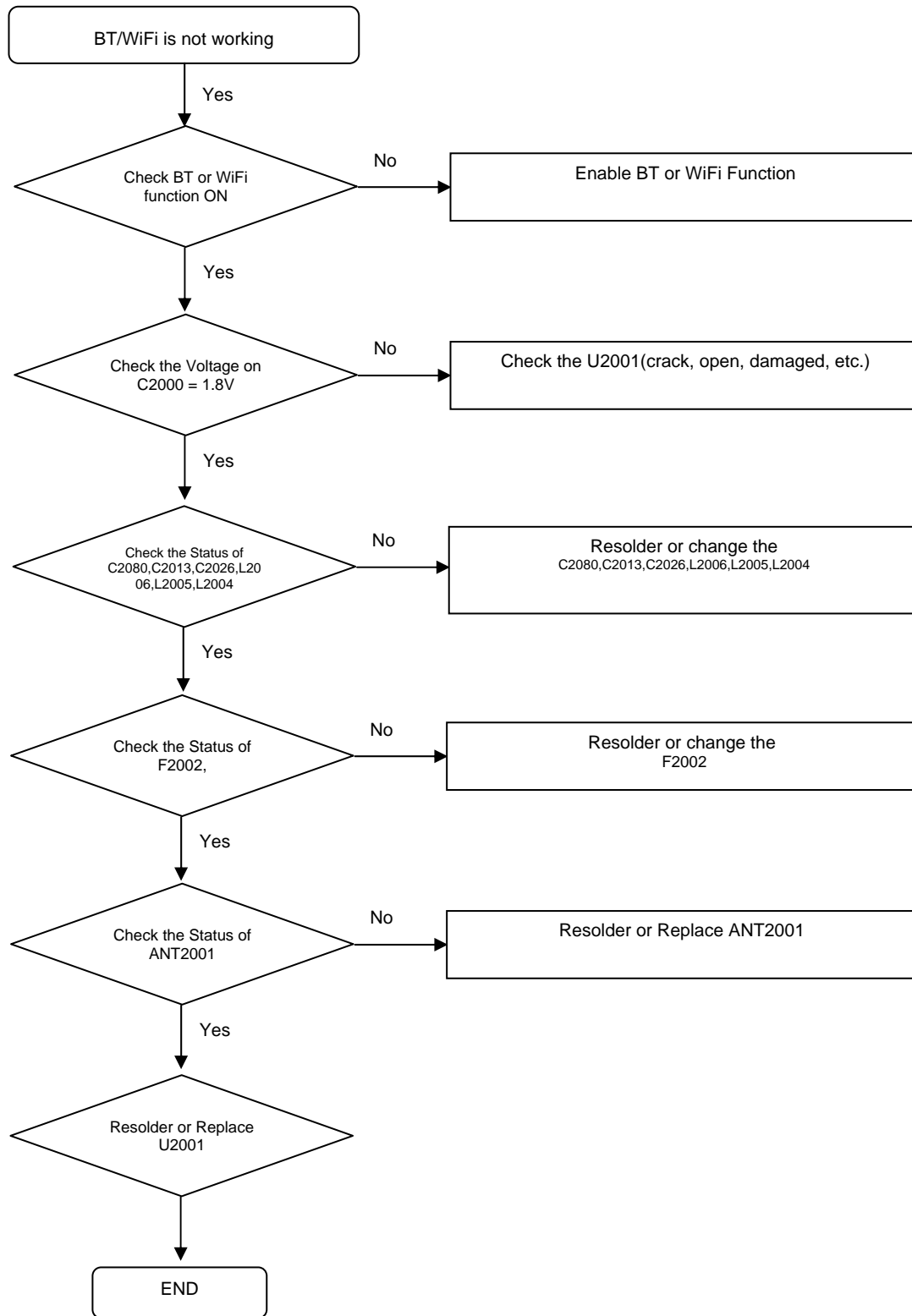
8. Level 3 Repair

8-4-9. Receiver Part



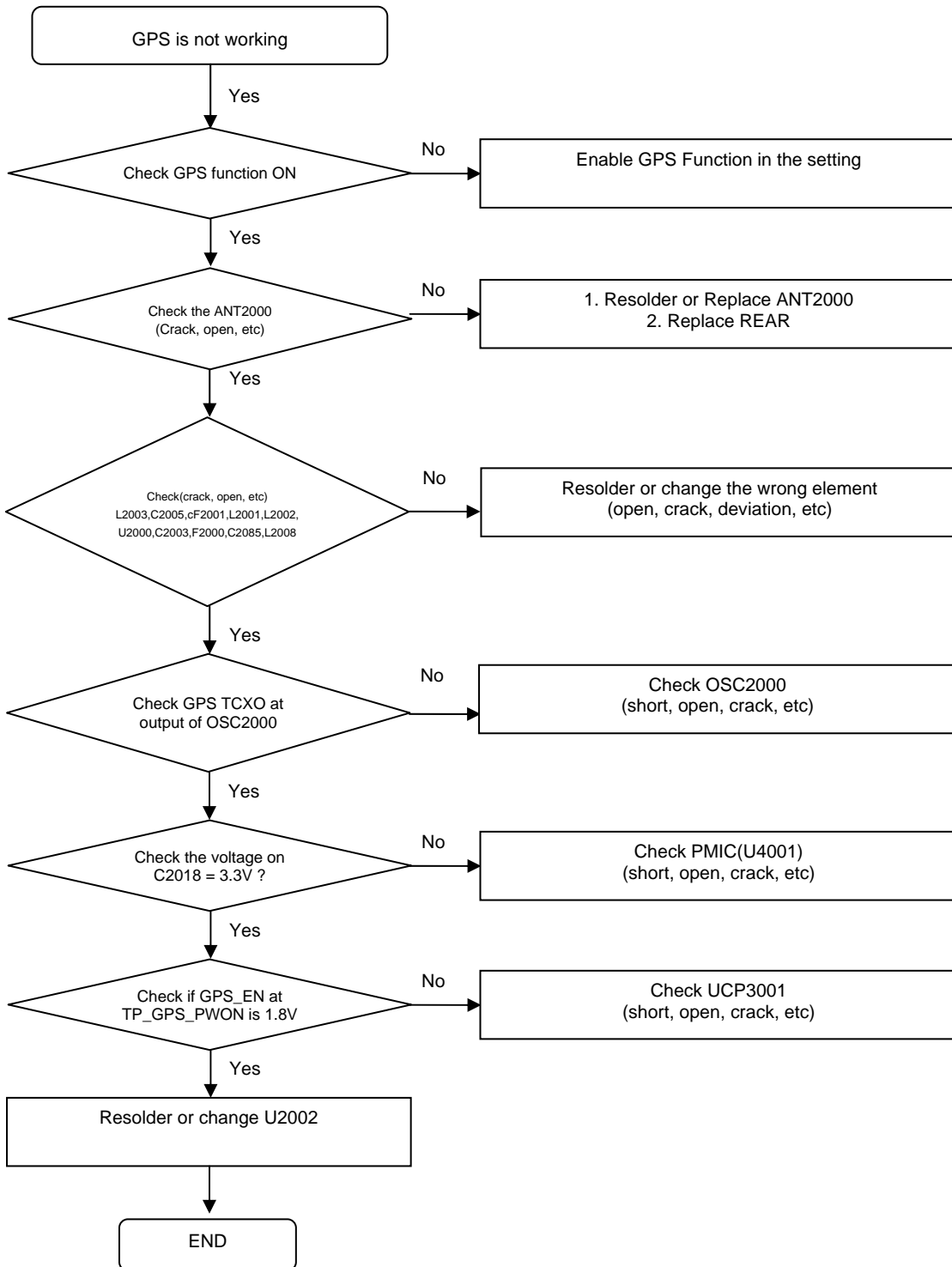
8. Level 3 Repair

8-4-10. BT/WIFI



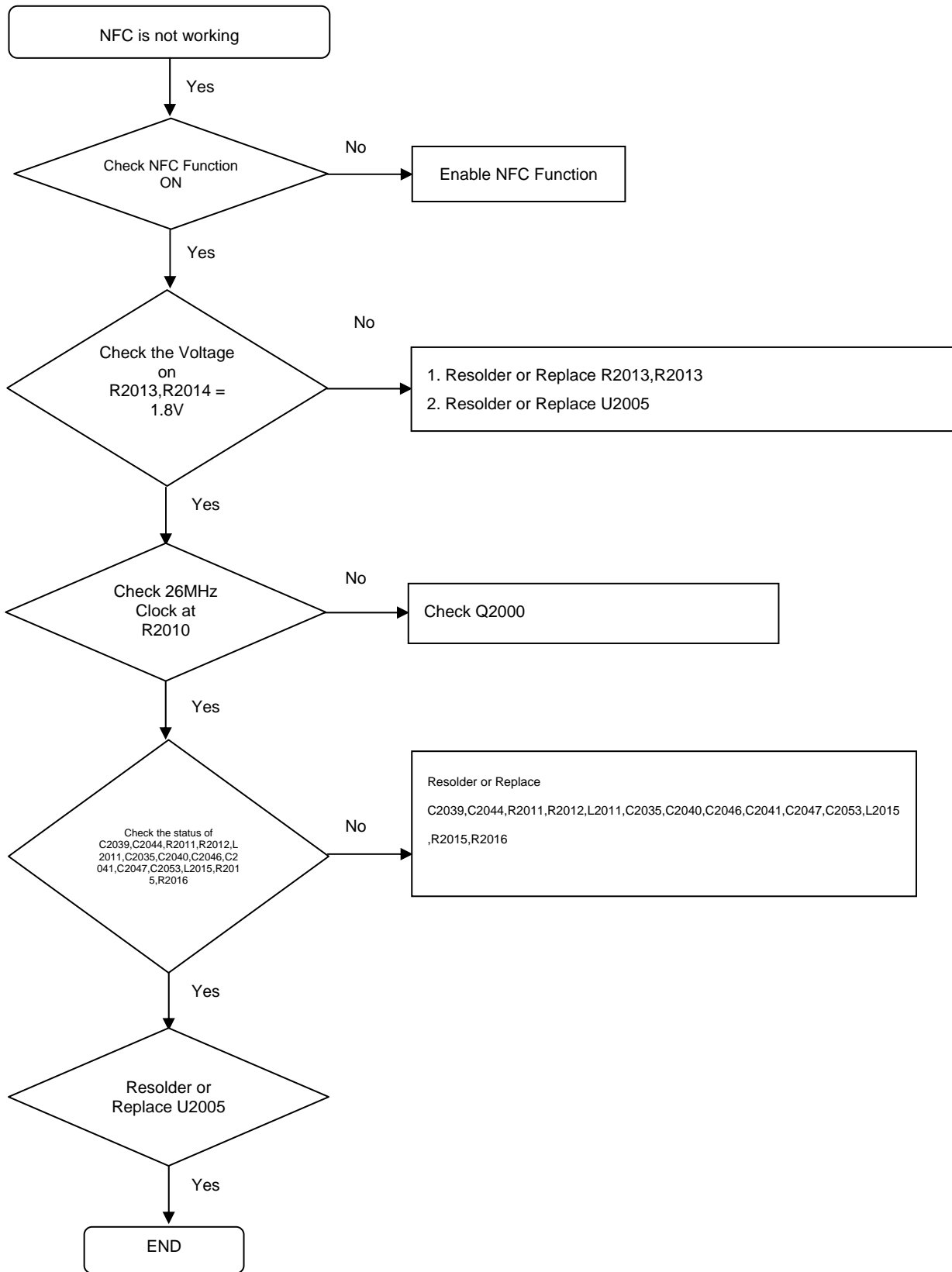
8. Level 3 Repair

8-4-11. GPS



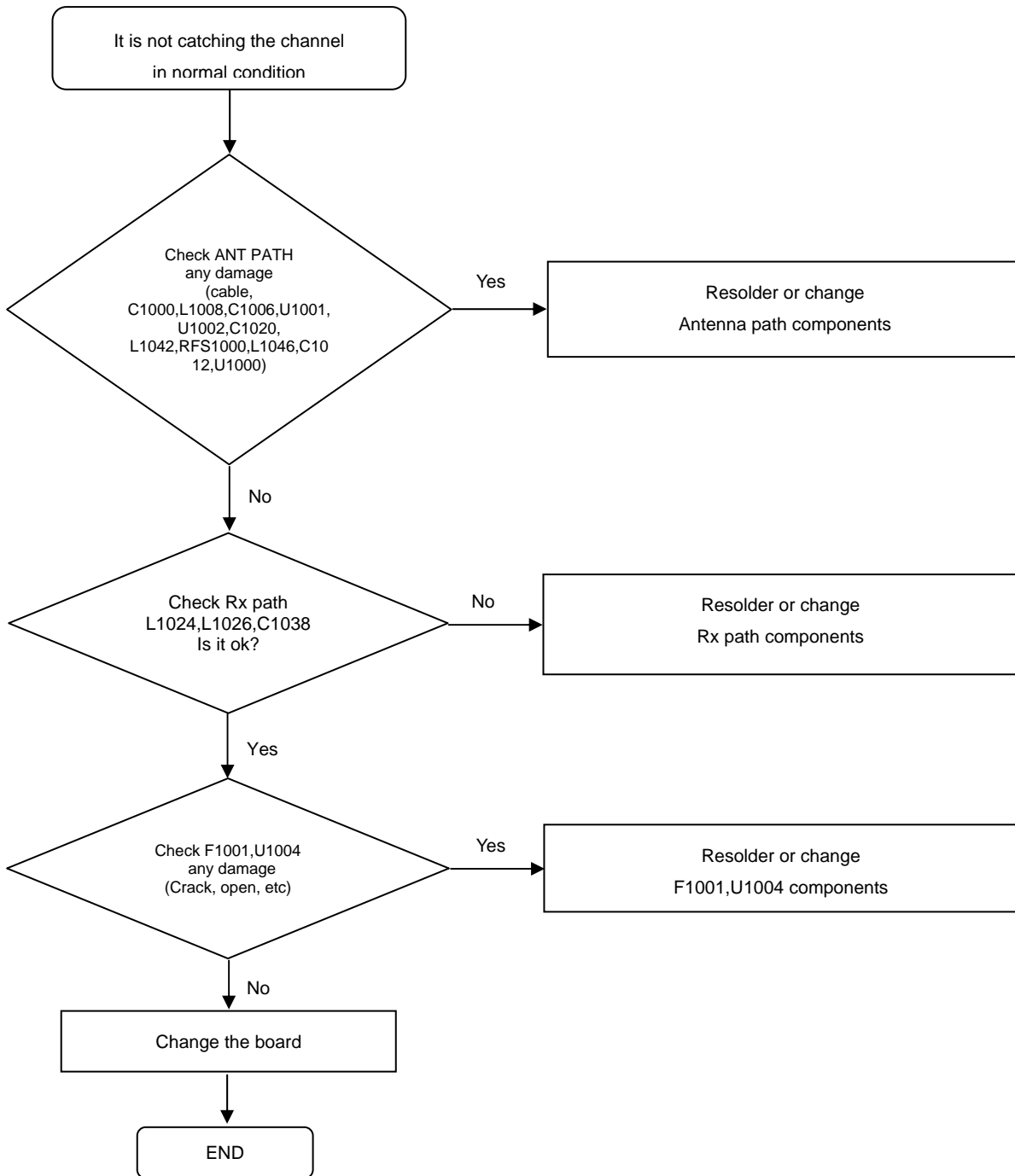
8. Level 3 Repair

8-4-12. NFC



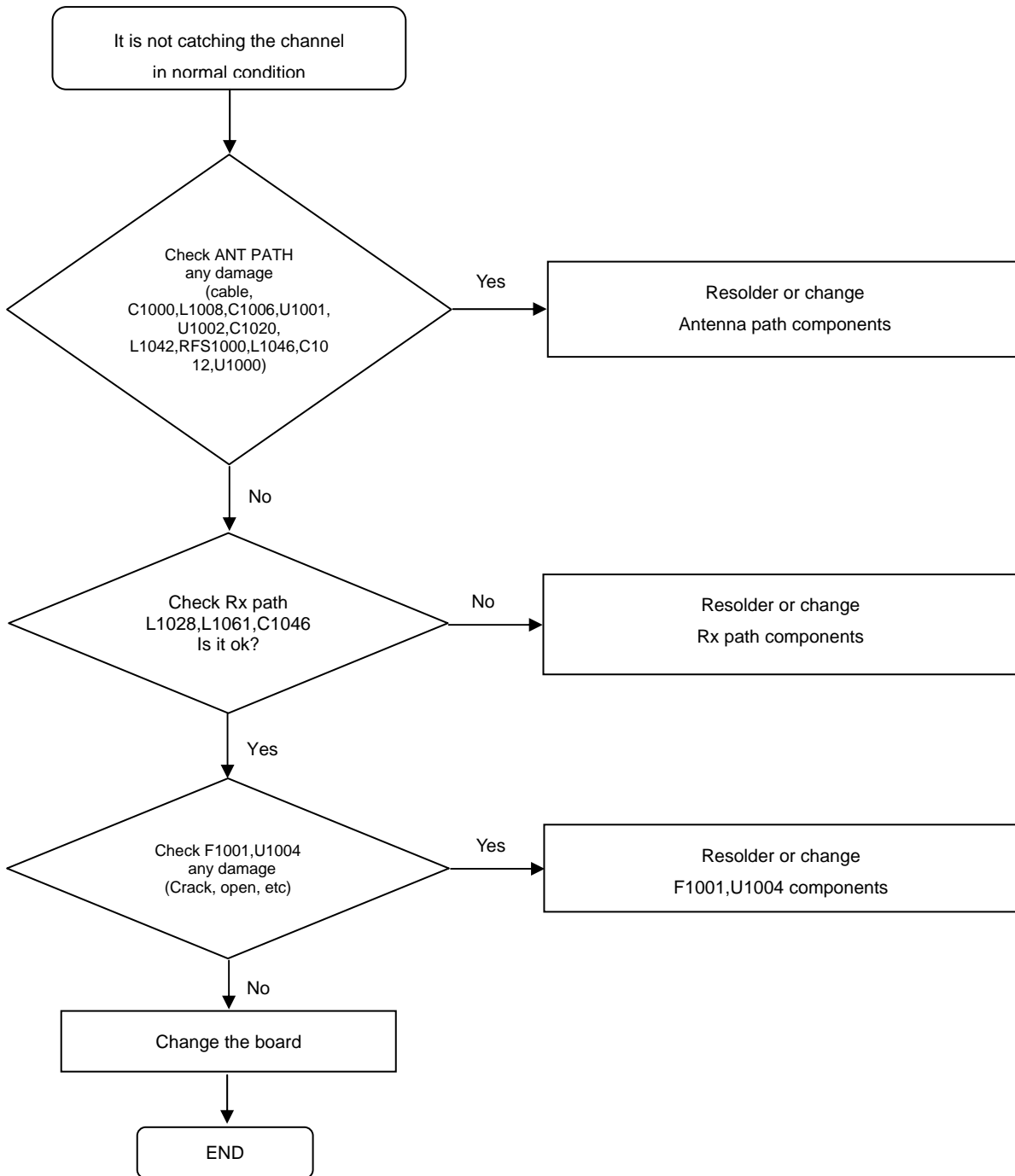
8. Level 3 Repair

8-4-16. GSM 850 / WCDMA 850 / LTE B5 RX



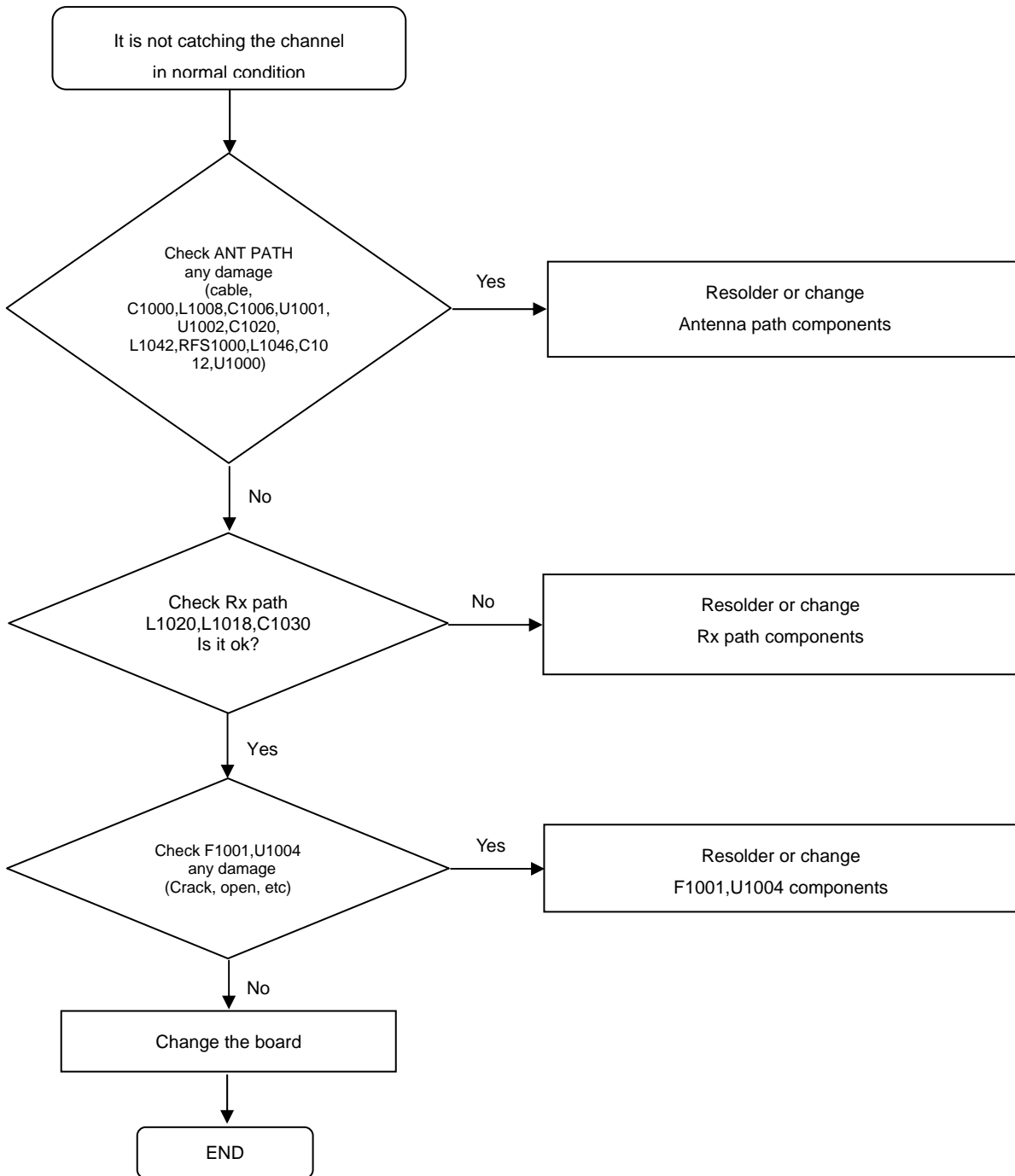
8. Level 3 Repair

8-4-17. GSM 900 / WCDMA 900 / LTE B8 RX



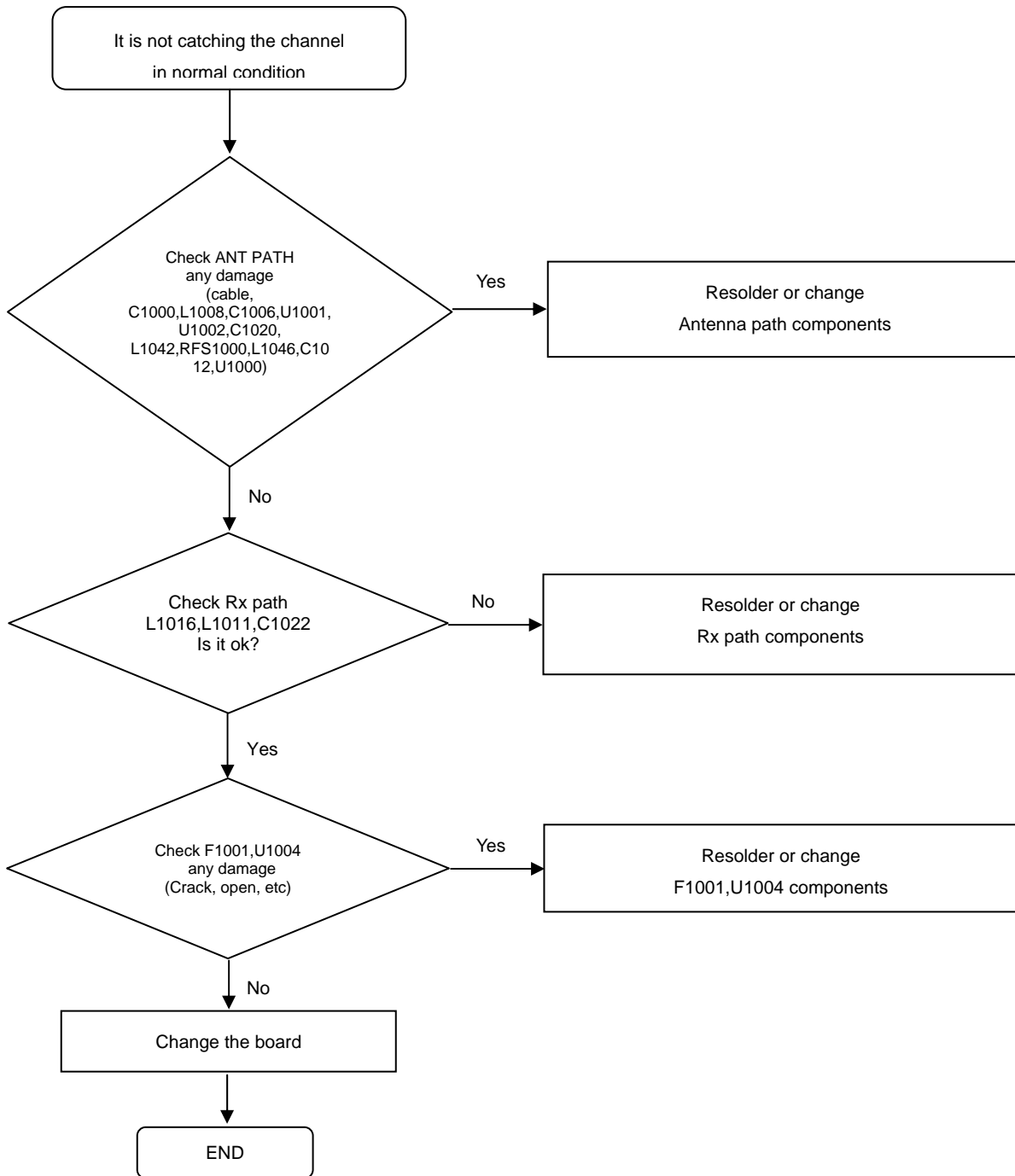
8. Level 3 Repair

8-4-18. GSM 1800 / LTE B3 RX



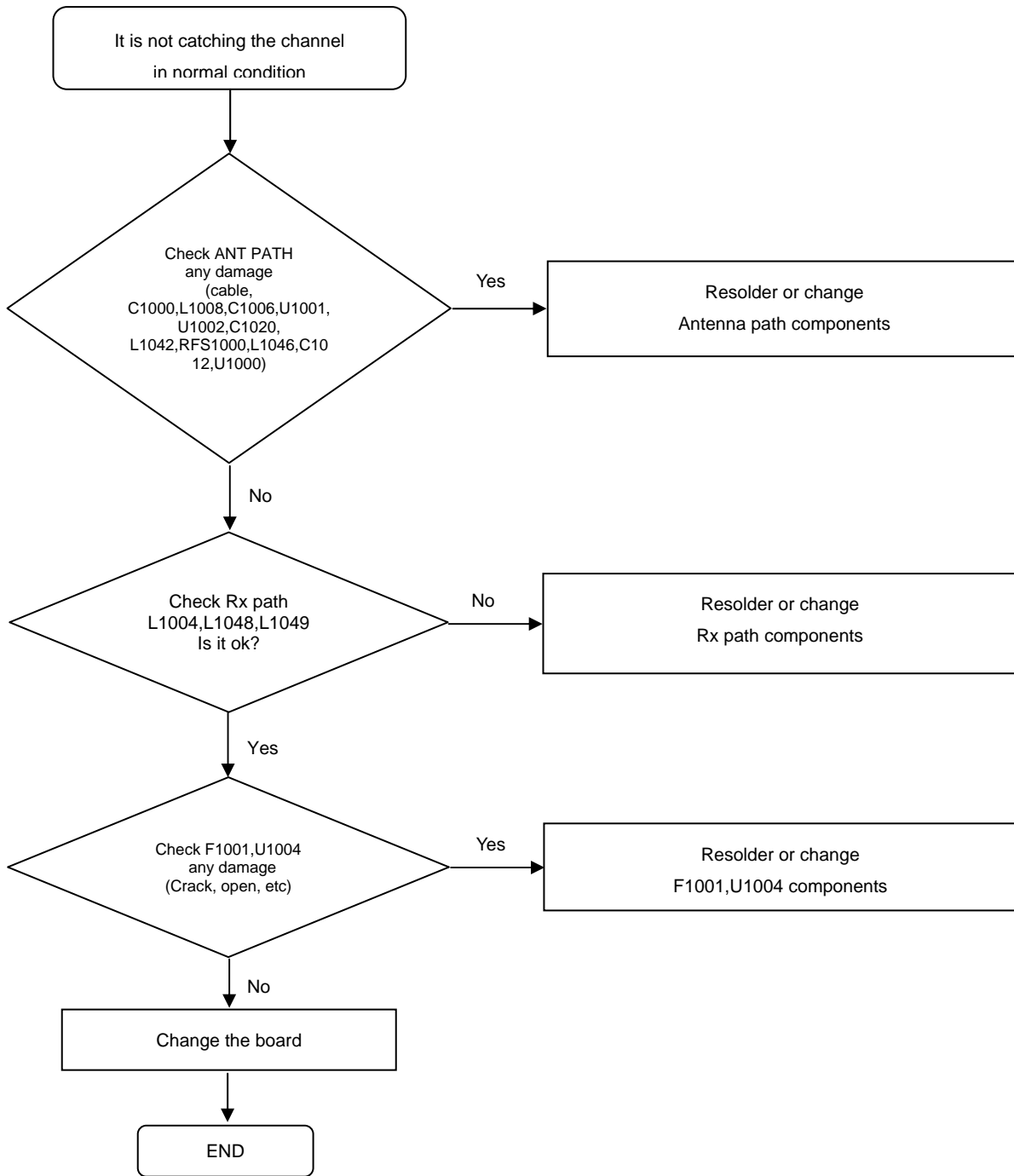
8. Level 3 Repair

8-4-19. GSM 1900 / WCDMA 1900



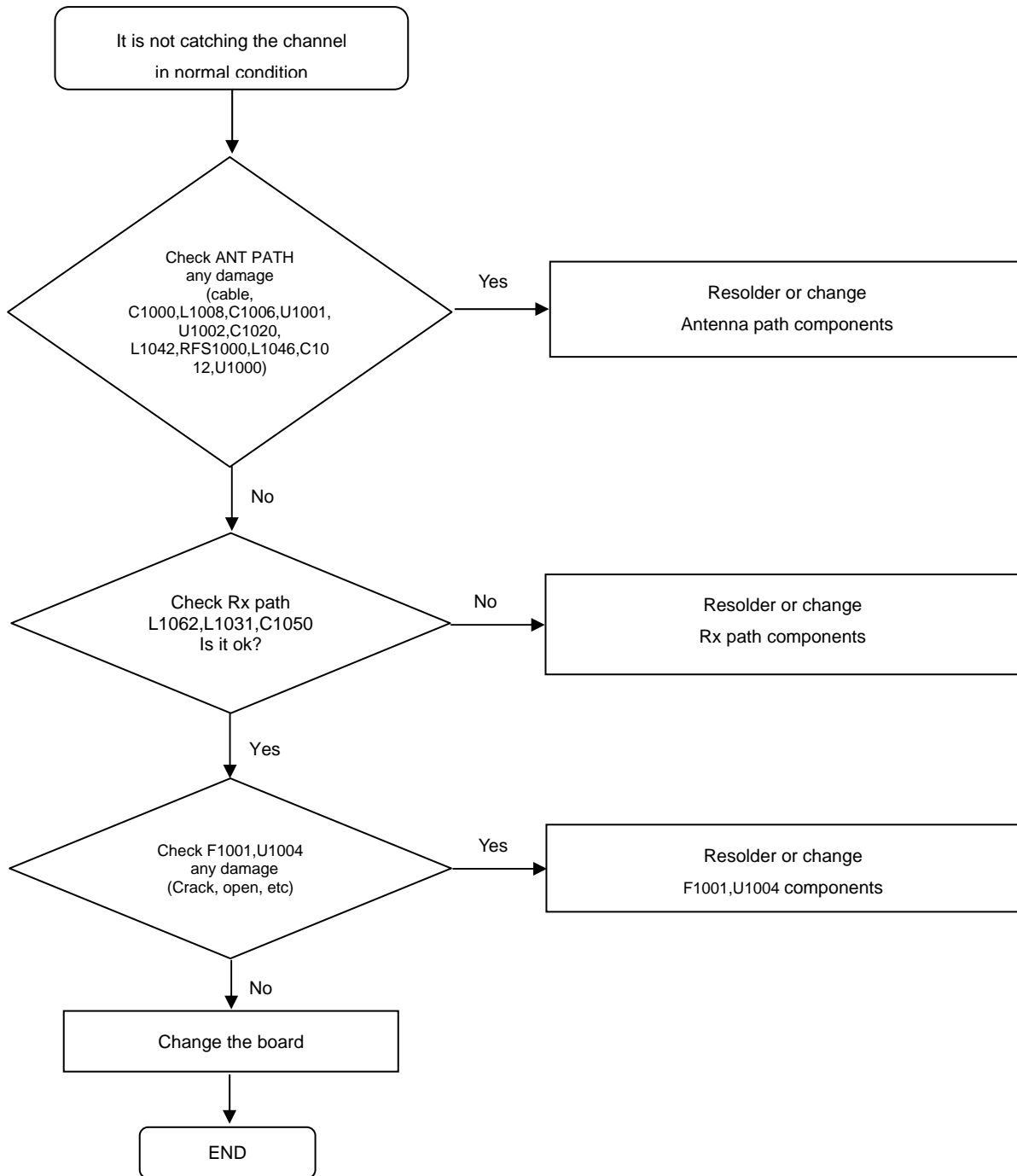
8. Level 3 Repair

8-4-20. WCDMA 2100 / LTE B1 RX



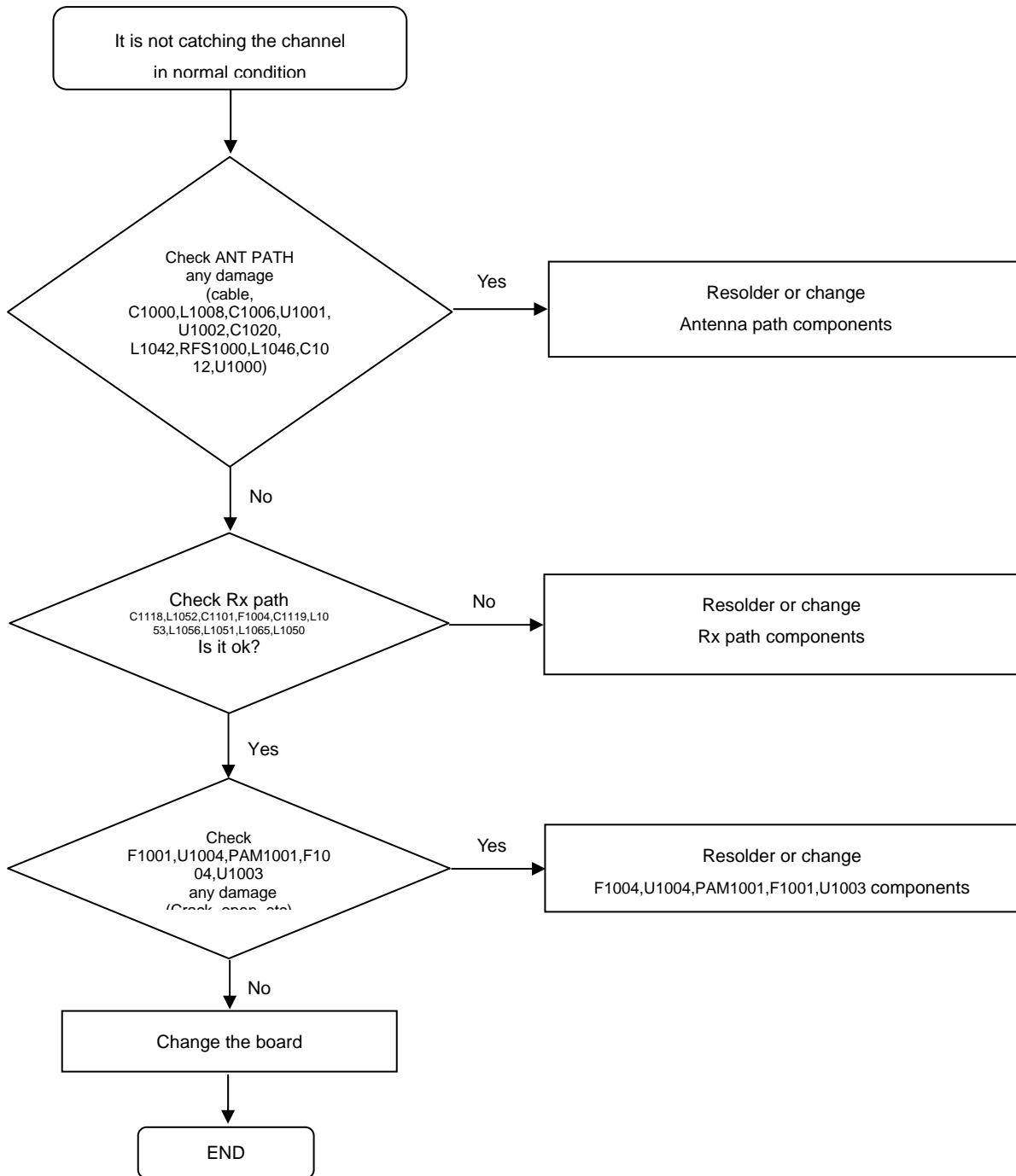
8. Level 3 Repair

8-4-21. LTE B17, B20 RX



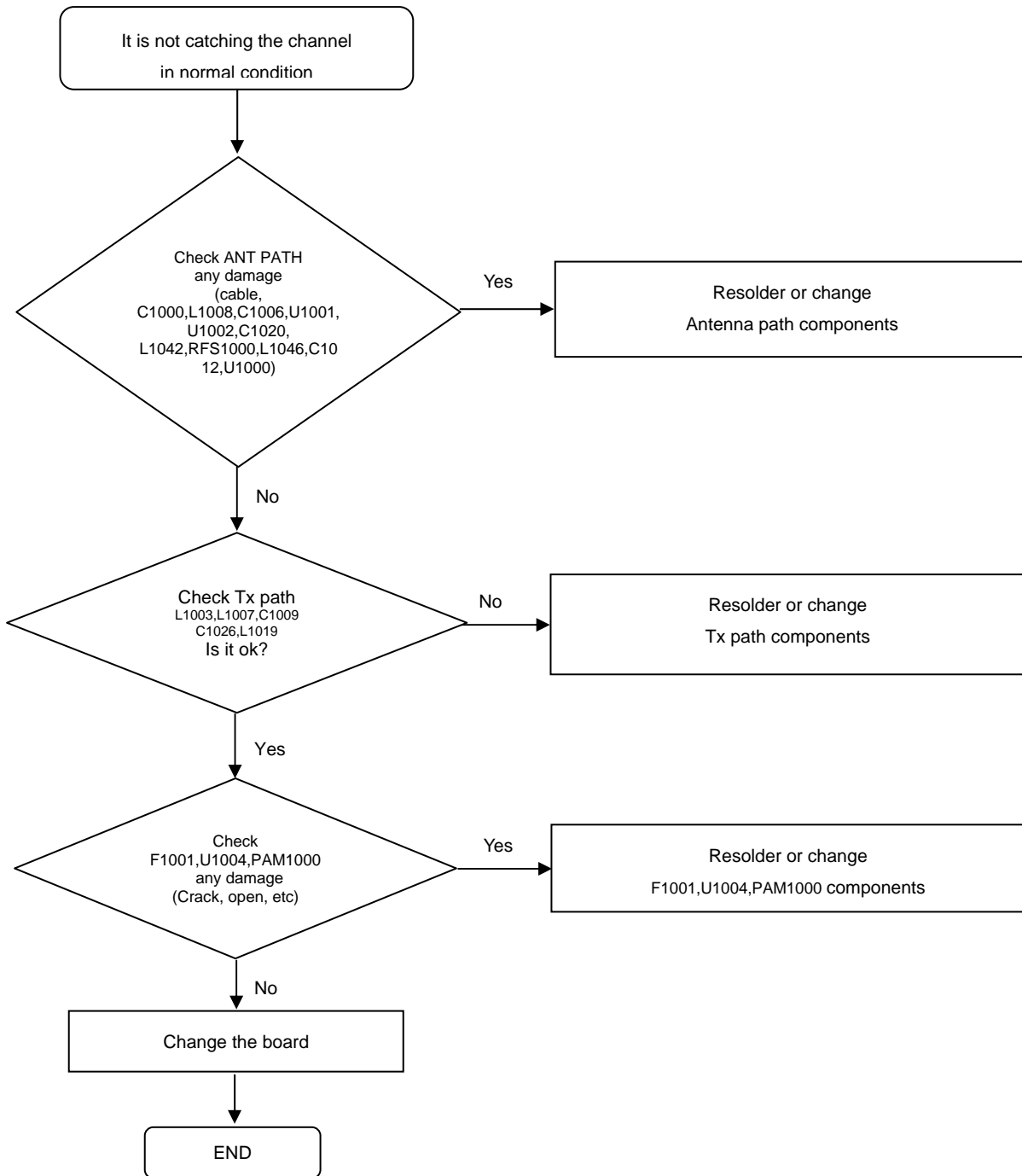
8. Level 3 Repair

8-4-22. LTE B7 RX



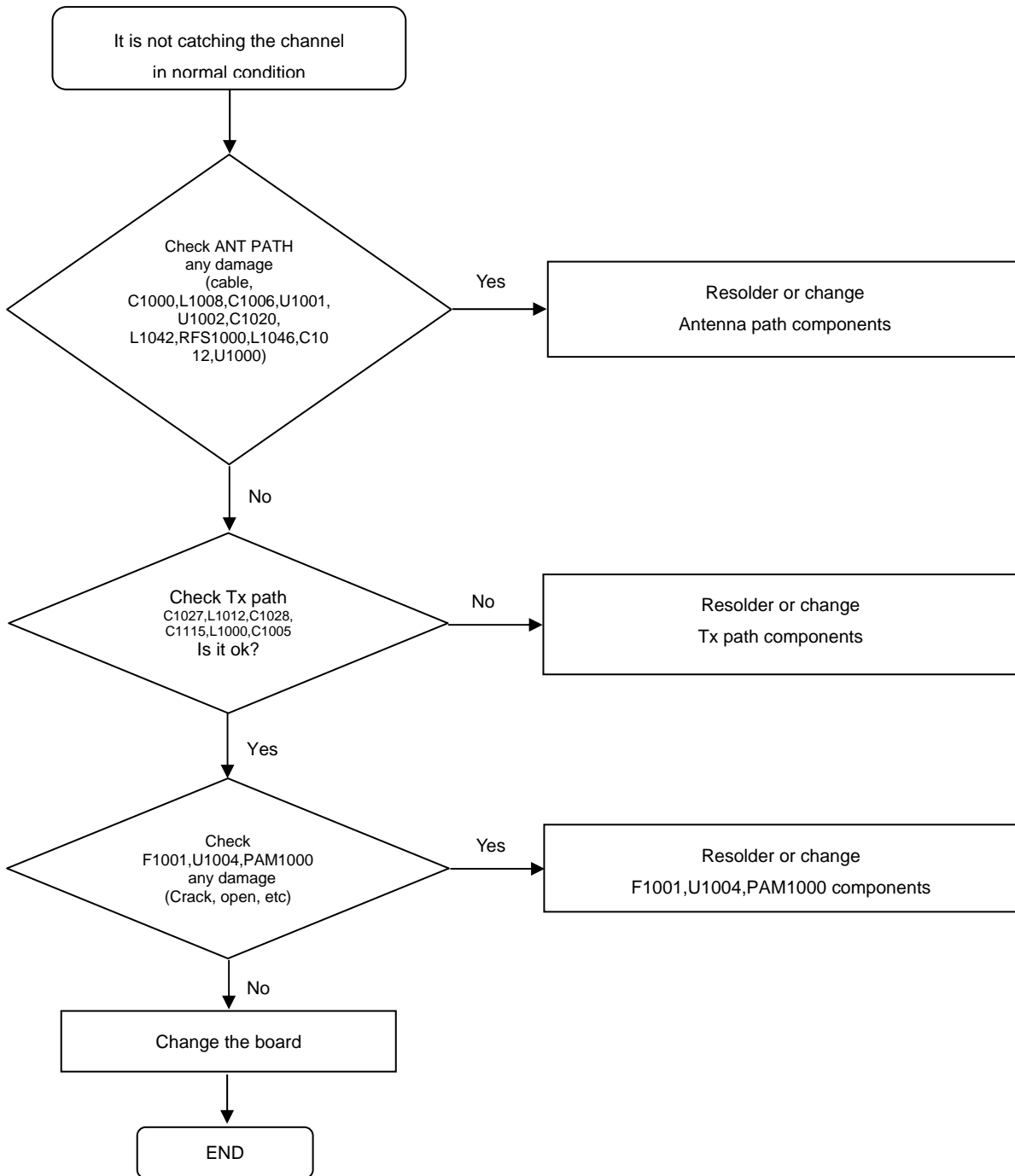
8. Level 3 Repair

8-4-23. GSM850/GSM900 TX



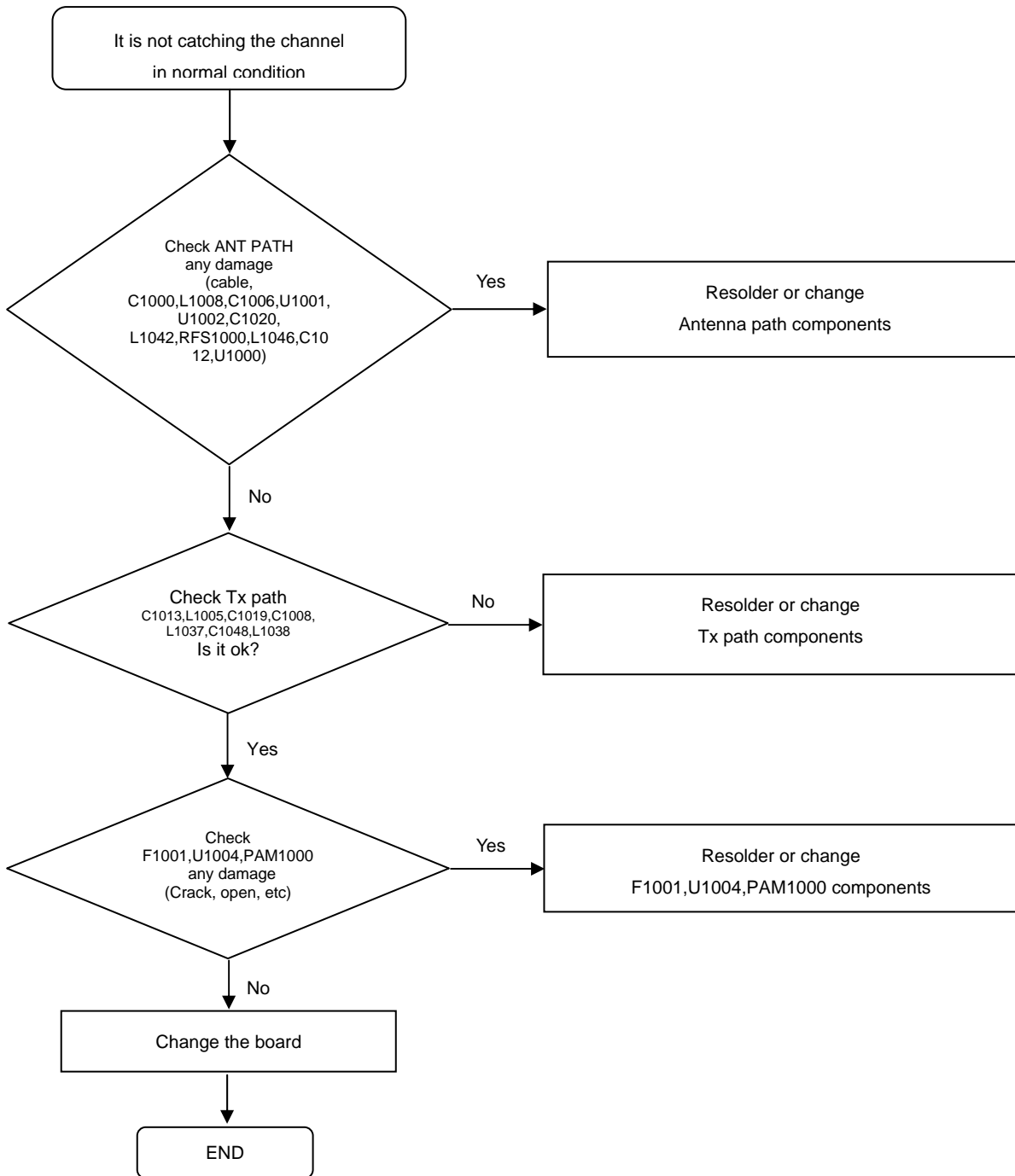
8. Level 3 Repair

8-4-24. GSM1800/GSM1900 TX



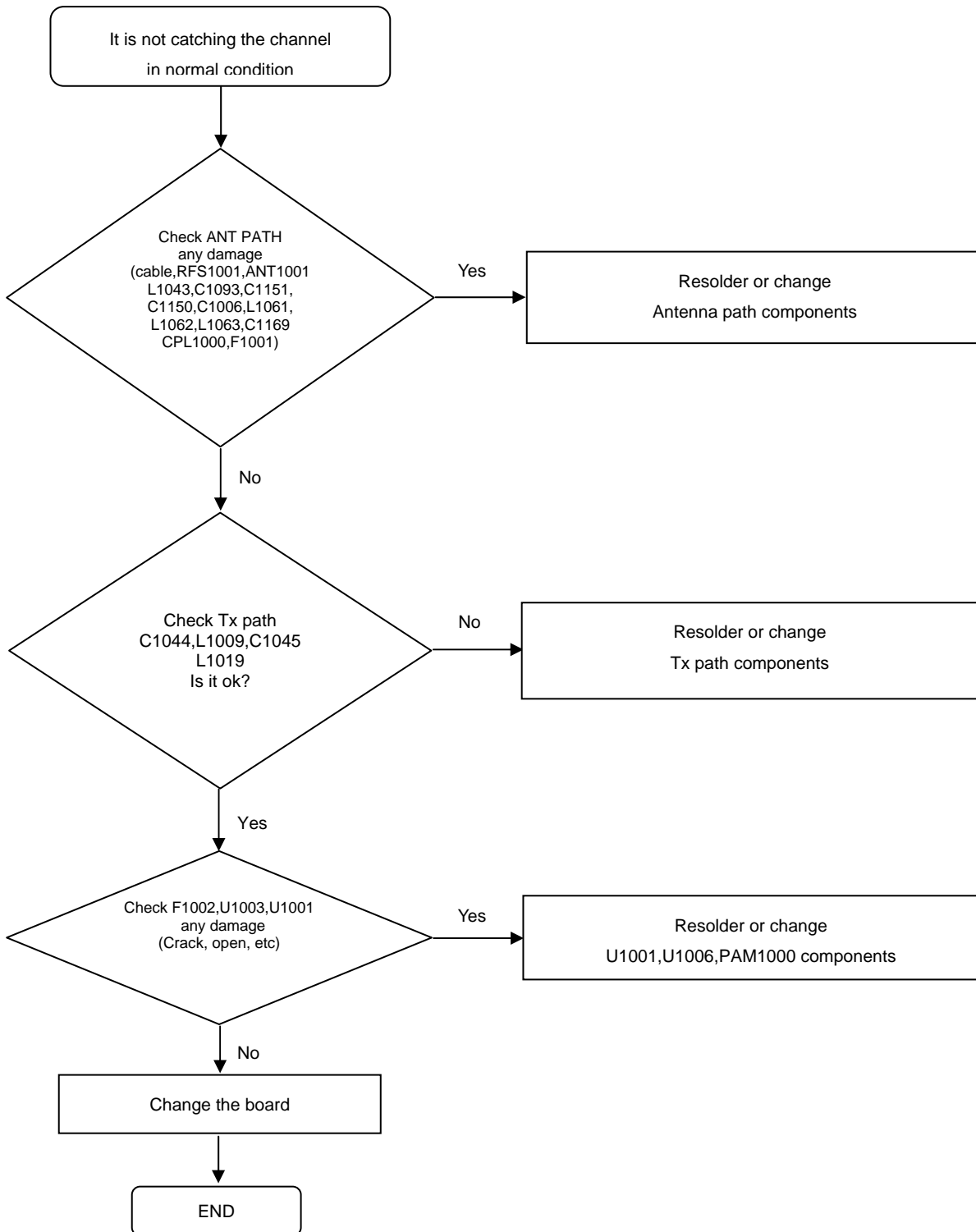
8. Level 3 Repair

8-4-25. WCDMA2100/LTE B1 TX



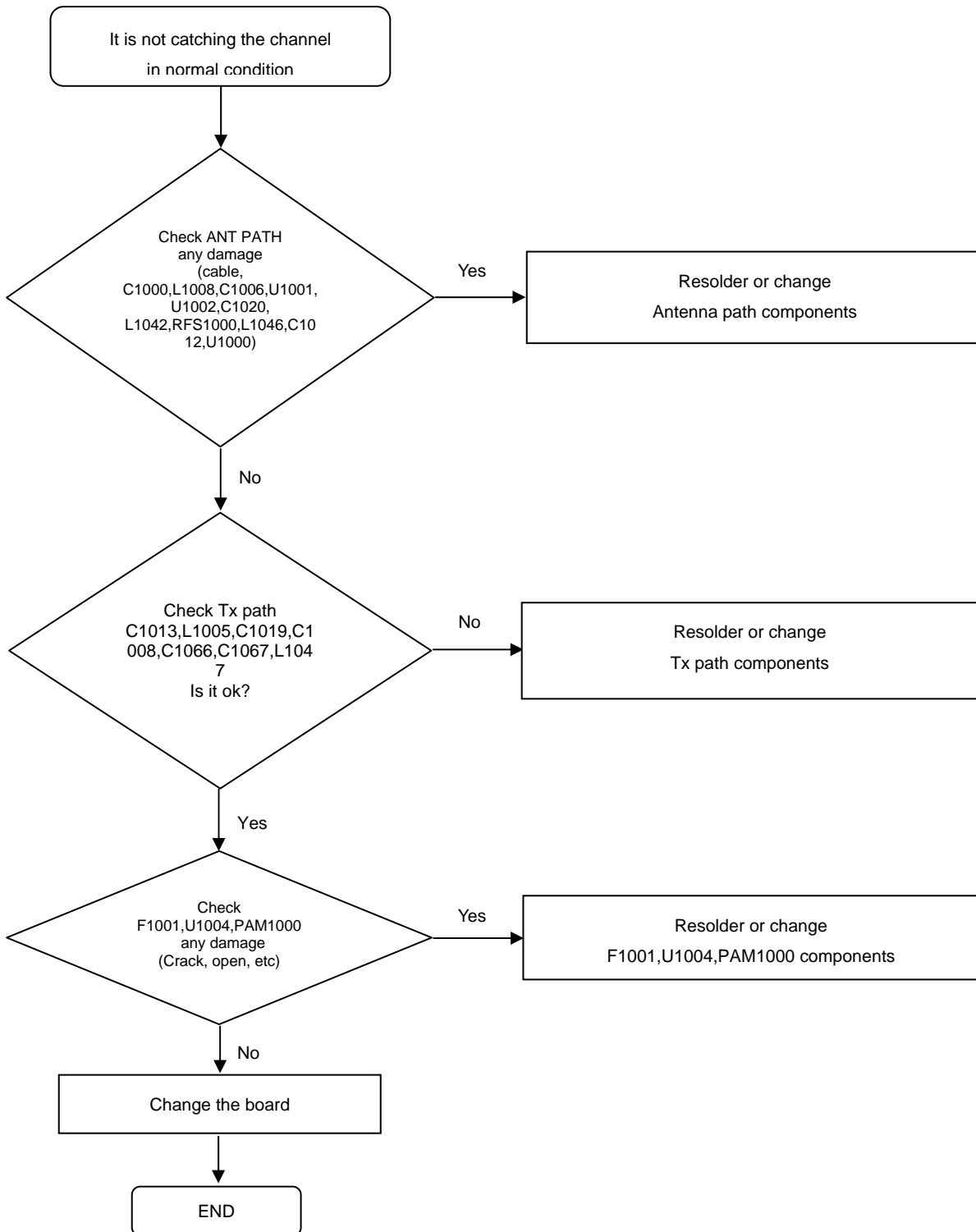
8. Level 3 Repair

8-4-26. WCDMA1900 TX



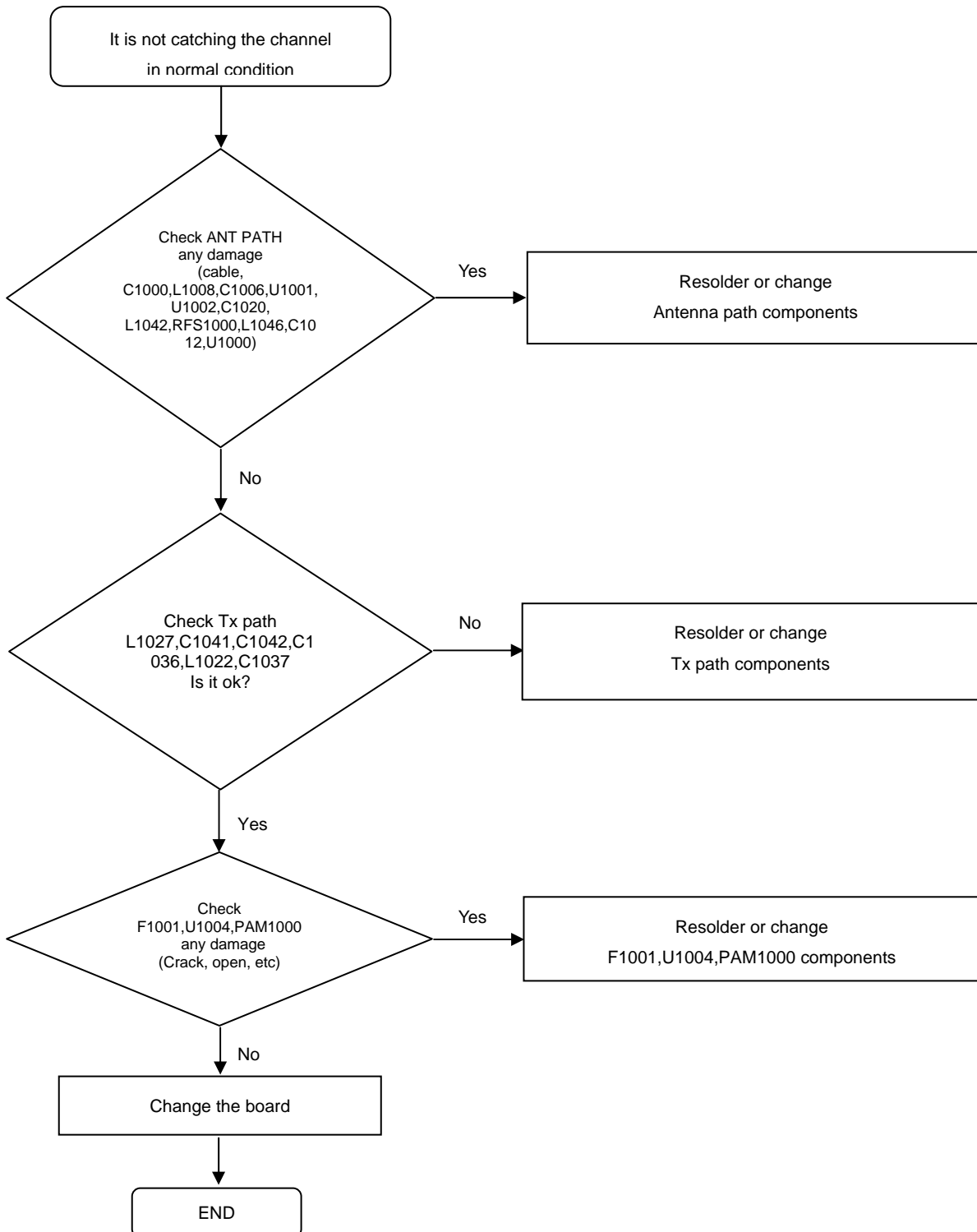
8. Level 3 Repair

8-4-27. LTE B3 TX



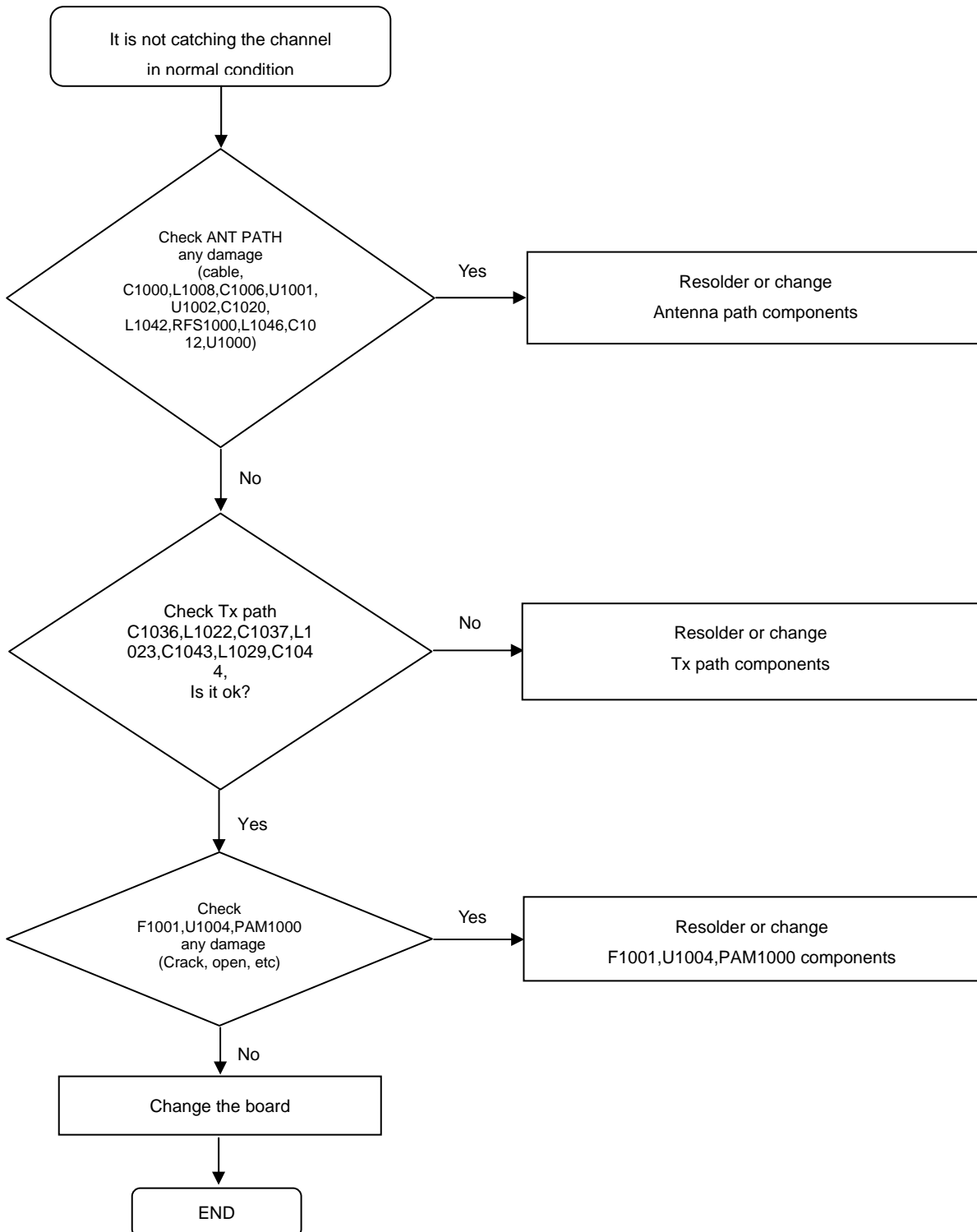
8. Level 3 Repair

8-4-28. WCDMA850/LTE B5 TX



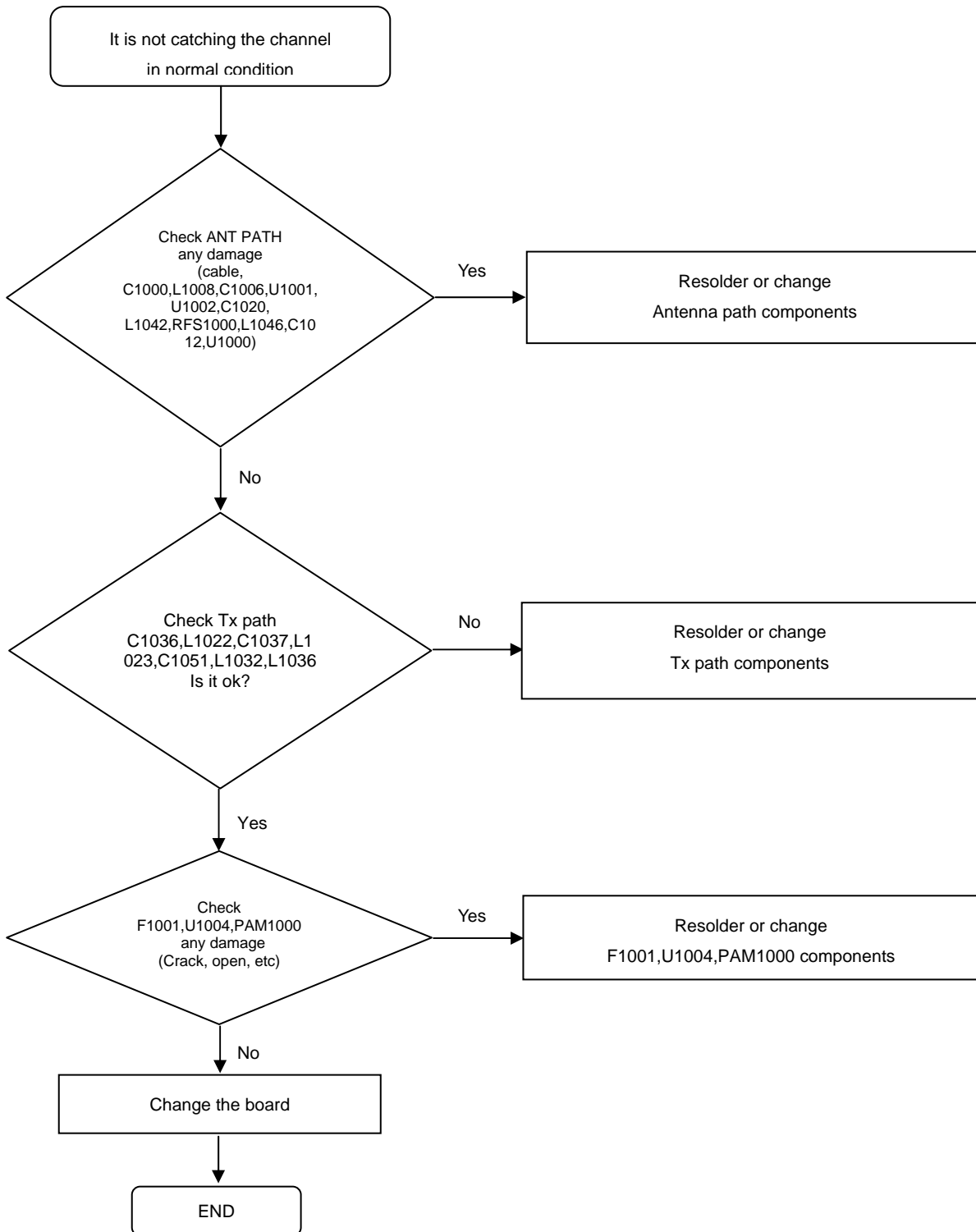
8. Level 3 Repair

8-4-29. WCDMA900/LTE B8 TX



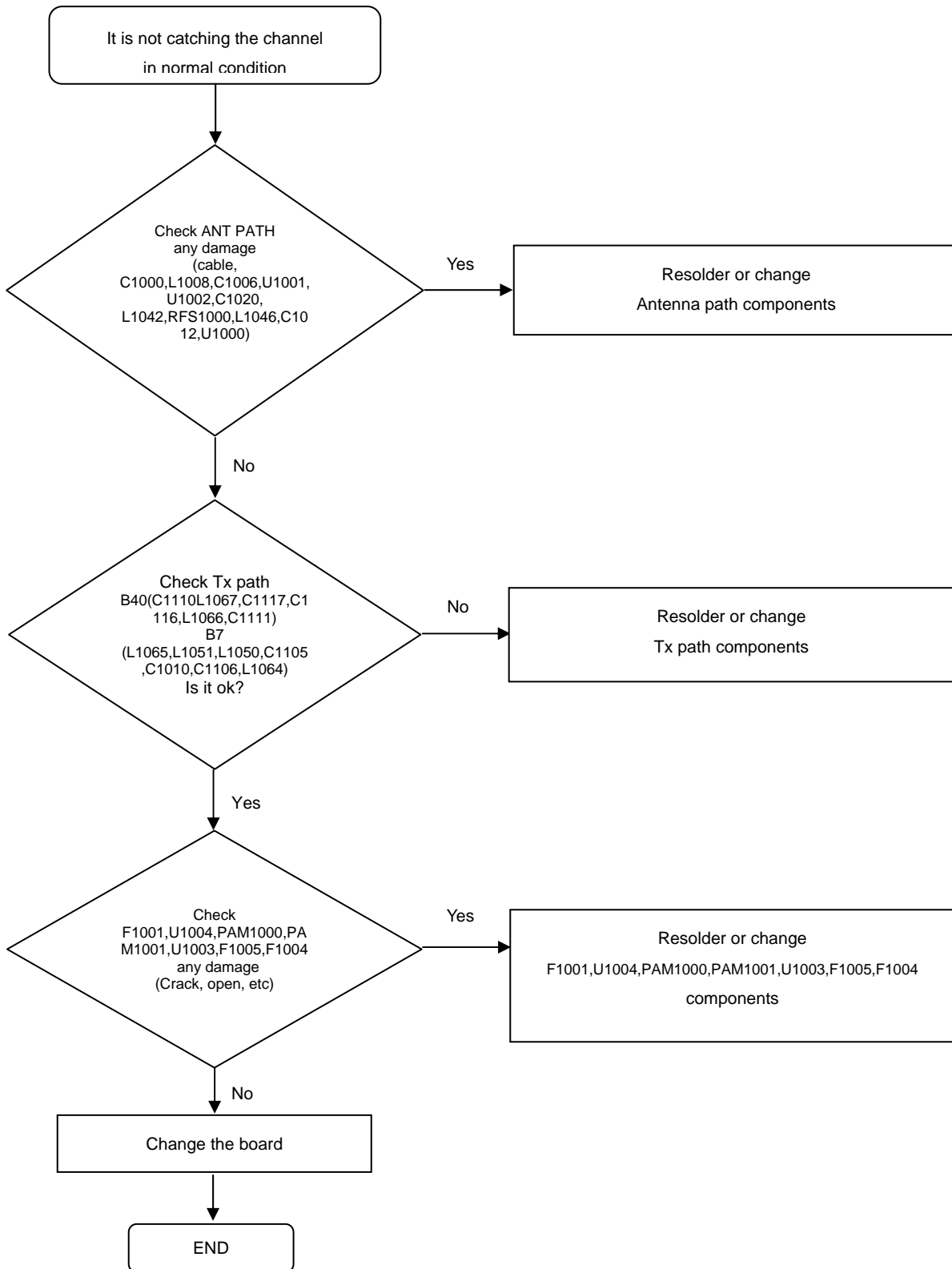
8. Level 3 Repair

8-4-30. LTE B20,B17 TX



8. Level 3 Repair

8-4-31. LTE B7/B40 TX



8. Level 3 Repair

8-5. Service Schematics

- NC Point(Top View)

UCP3000 (AP)

	1	2	3	4	5	6	7	8	9	10	11	12	13	14	15	16	17	18	19	20	21	22	23	24	25	26	27	28	29
A	EMV830	NC	EMMC_D2	NF00	NF00		CMCLK	CORQ0		MCS10_A	MCS10_A	MCS10_A	MCS10_A	MCS10_A	MCS10_A	MCS10_A	MCS10_A	MCS10_A	MCS10_A	MCS10_A	MCS10_A	MCS10_A	MCS10_A	MCS10_A	MCS10_A	MCS10_A	MCS10_A	MCS10_A	MCS10_A
B	NC	EMSS2	EMMC_R0	EMMC_D4	EMMC_D4	NF00	EMMC_D1	NF00	SD0	MCS10_A	MCS10_A	MCS10_A	MCS10_A	MCS10_A	MCS10_A	MCS10_A	MCS10_A	MCS10_A	MCS10_A	MCS10_A	MCS10_A	MCS10_A	MCS10_A	MCS10_A	MCS10_A	MCS10_A	MCS10_A	MCS10_A	MCS10_A
C	EMD13	EMD10	EMMC_D0				EMMC_D0	EMMC_D0		SCL0																			
D	EMD13	EMD10	EMD12	EMMC_D0			EMMC_D0	EMMC_D0		VCAM																			
E	EMV830			EMD12	EMMC_D5		EMMC_D0	EMMC_D0		CMPD0																			
F	EMD13	EMD10	EMD03	EMD03																									
G	EMDQW3	EMD10																											
H	EMV830	EMD10	EMD10	EMV830																									
J	EMD10		EMD10	EMV830																									
K	EMD10		EMD03	EMV830																									
L	EMD10	EMD03	EMD03																										
M	EMV830		EMV830																										
N		EMA0		EMA0																									
P	EMA0			EMD00																									
R	EMA0	EMA0	EMATO																										
T	EMV830		CLKDPMEM																										
U		EMCS_N	EMCKE0																										
V	EMCS_N	EMA0																											
W	EMA0	EMA0		EMA0	EMD00																								
Y			EMA0	EMD00																									
AA	EMC00	EMD0																											
AB	EMD0	EMD0	EMD03																										
AC	EMD0	EMD0	EMD0	EMSS2																									
AD	EMSS2		EMD0	EMSS2																									
AE	EMC00	EMD0	EMD0																										
AF	EMD0	EMD03	EMD03	EMD10																									
AG	EMD0		EMD0	EMD0																									
AH	NC		EMD10	EMD10																									
AI	EMSS2	NC	EMD10																										

Confidential and proprietary-the contents in this service guide subject to change without prior notice

Distribution, transmission, or infringement of any content or data from this document without Samsung's written authorization is strictly prohibited.