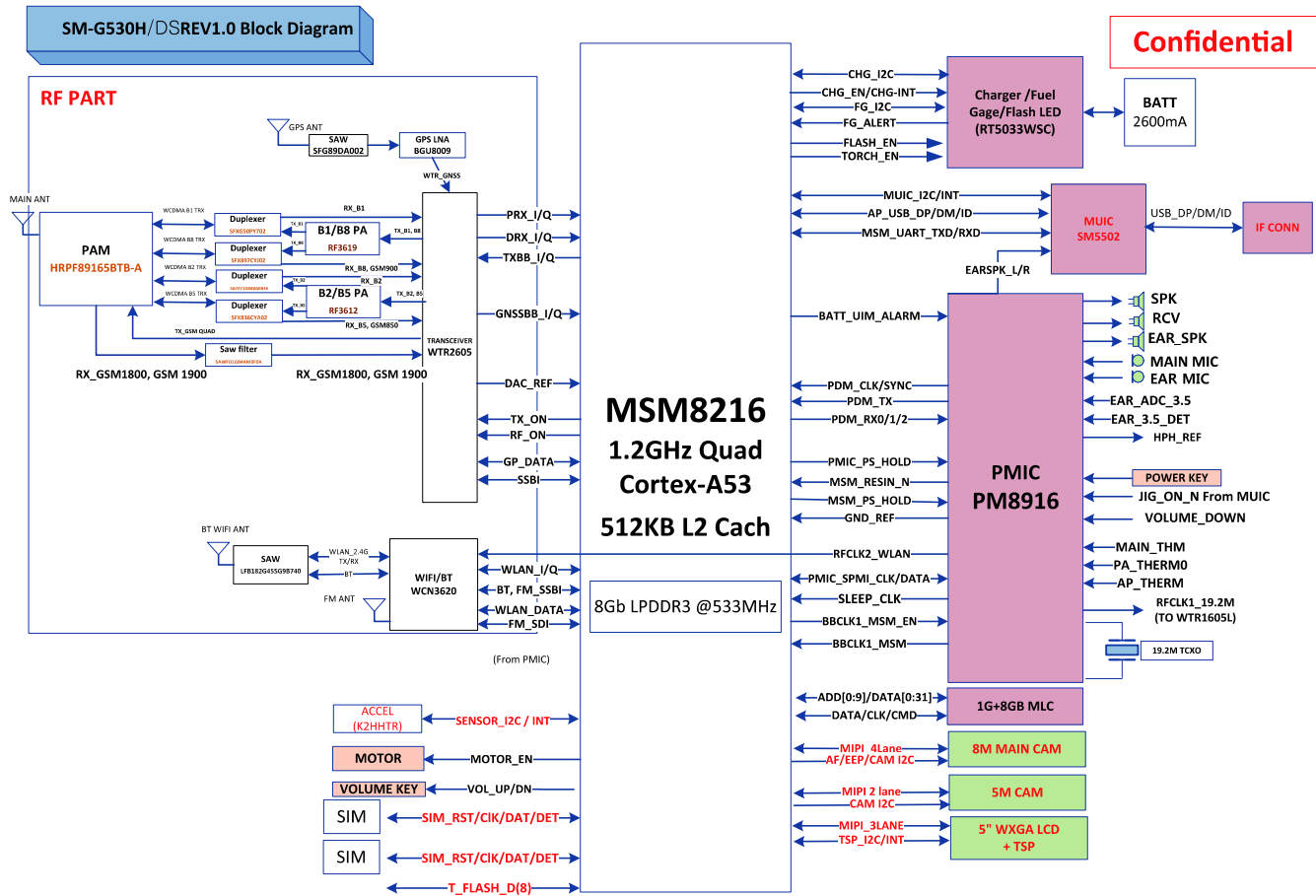


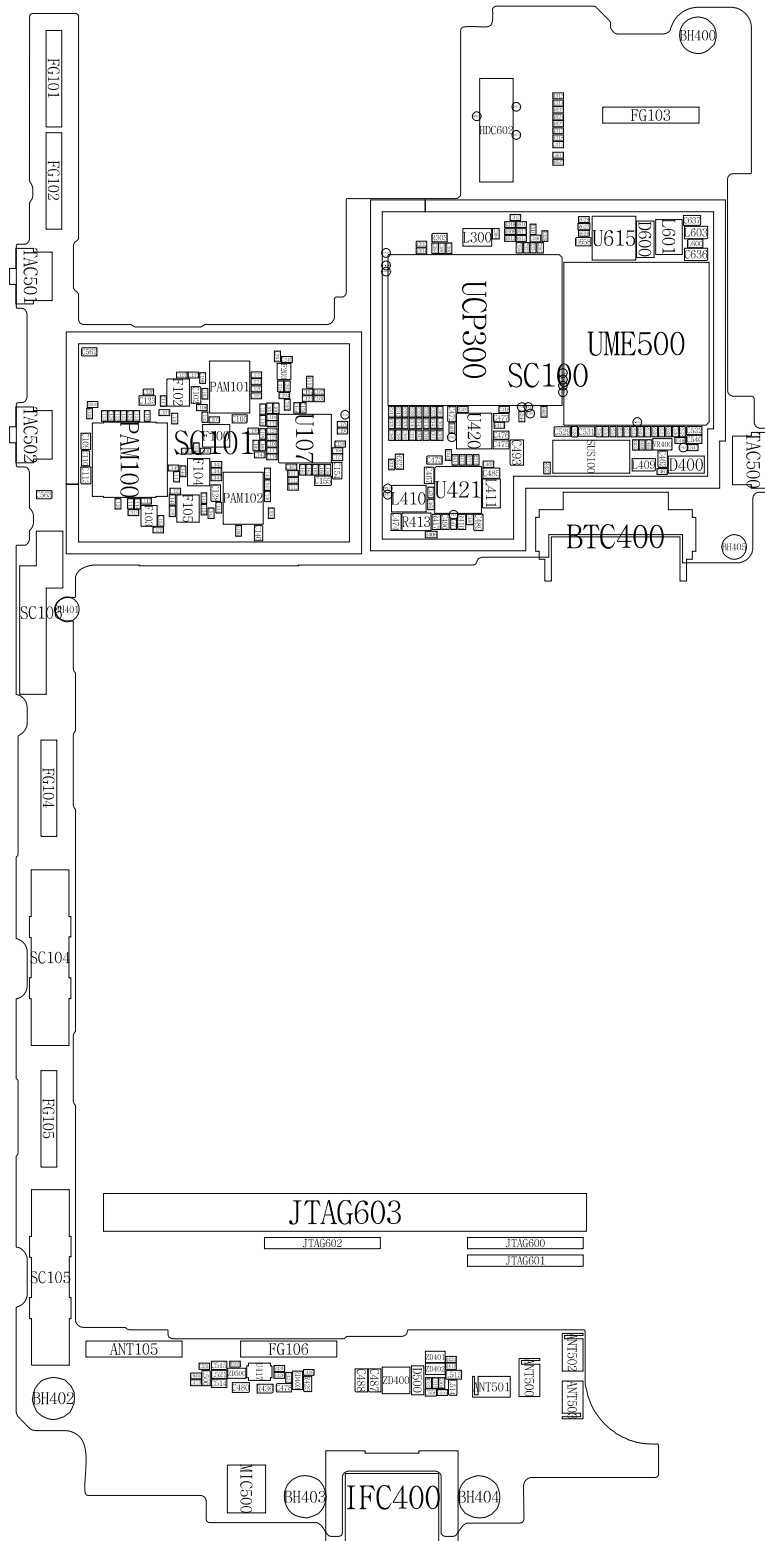
8. Level 3 Repair

8-1. Block Diagram

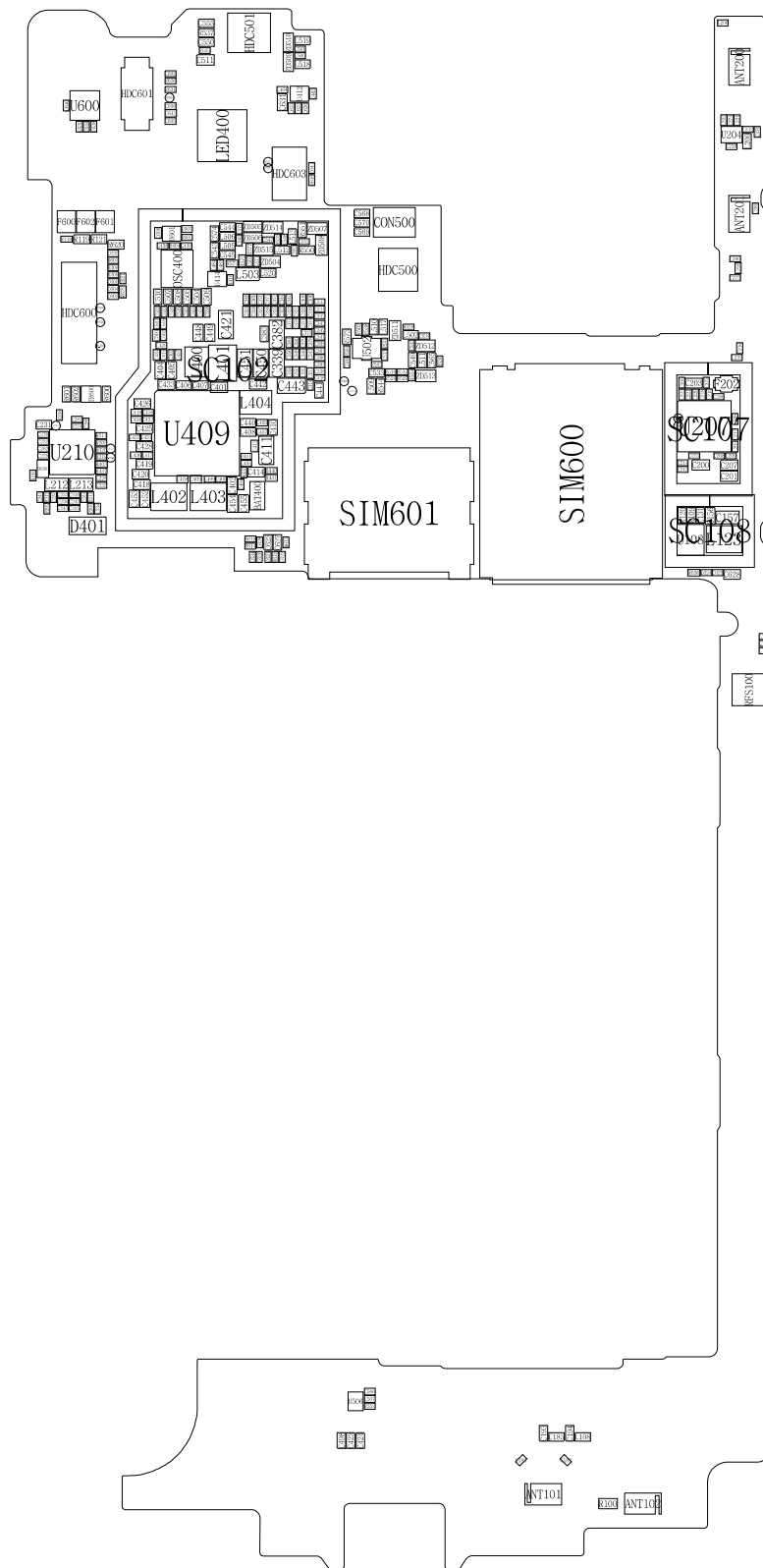


8-2. PCB Diagrams

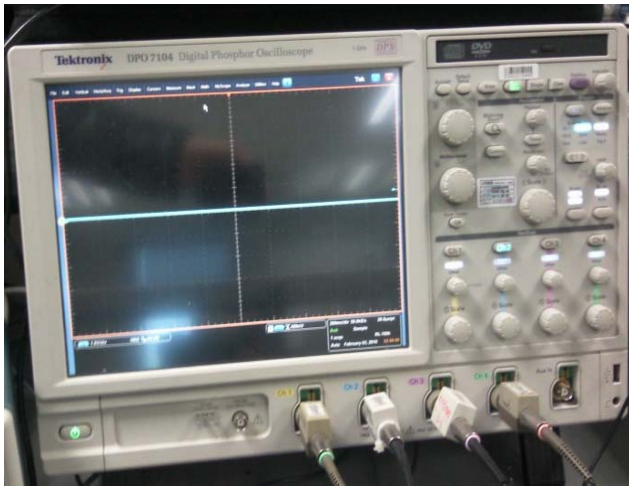
8-2-1. Top



8-2-2. Bottom



8-3. Flow Chart of Troubleshooting Equipments



↑ Oscilloscope



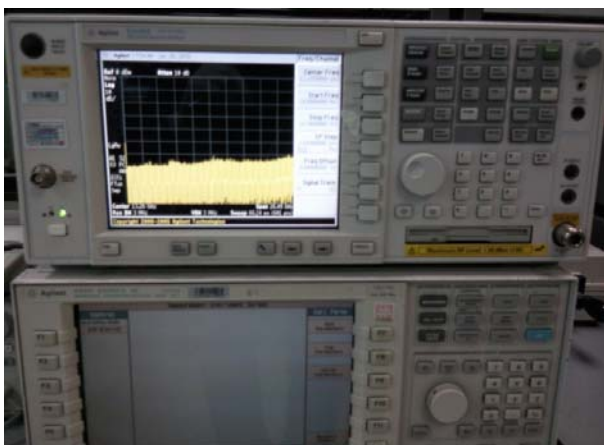
↑ Digital Multimeter



↑ Power Supply



↑ + driver, ESD Safe Tweezer

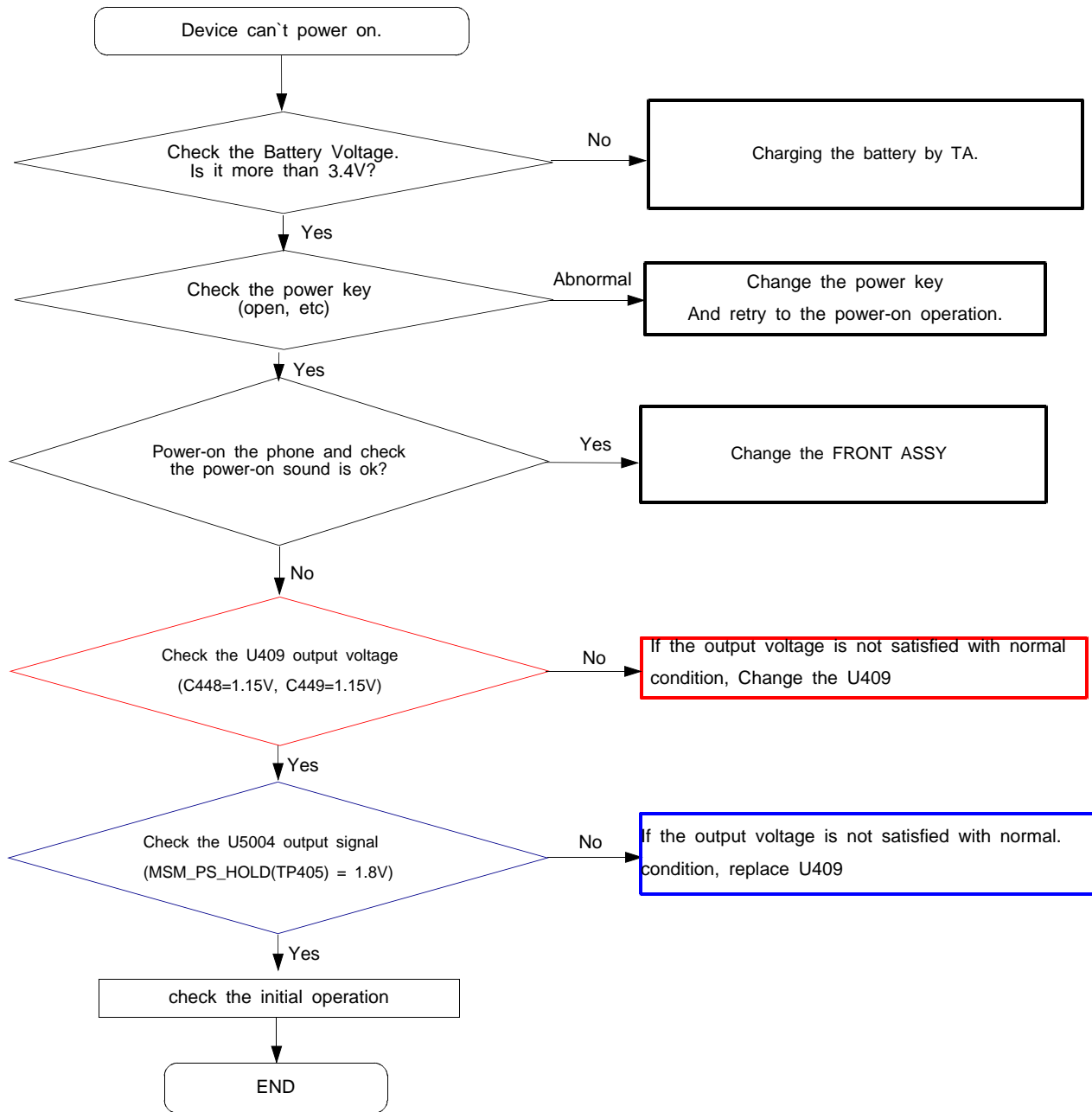


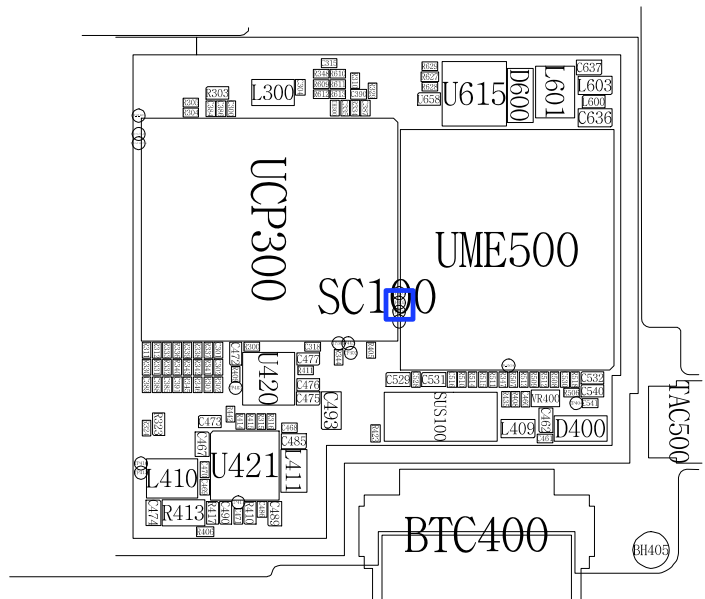
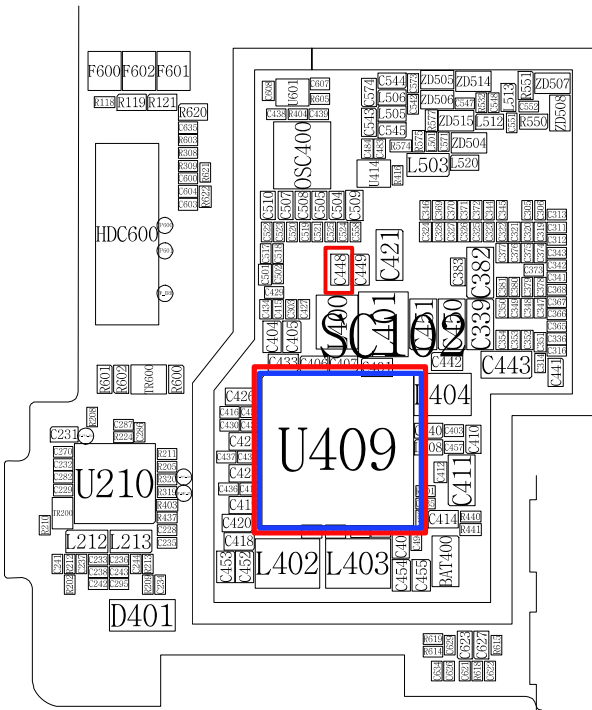
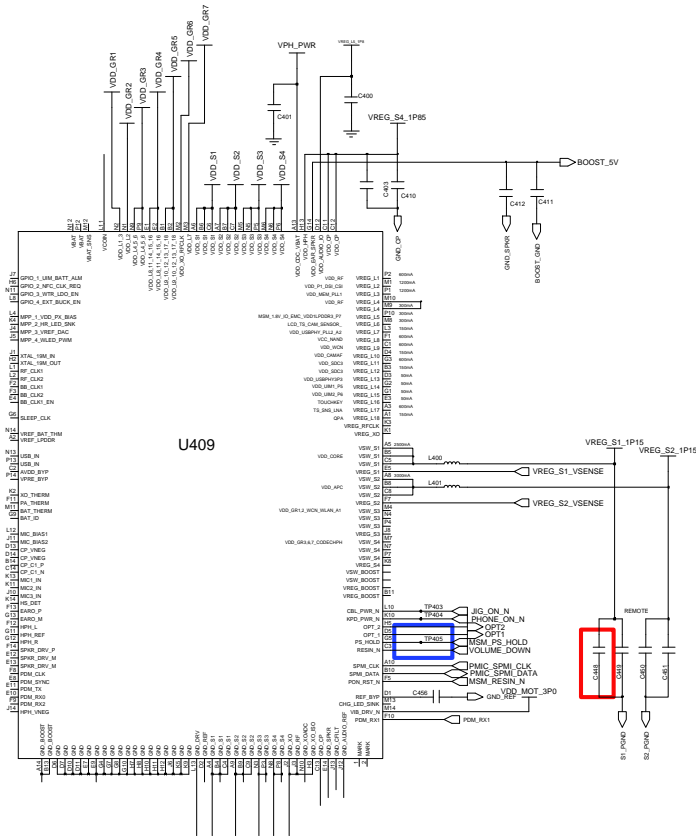
↑ 8960 & Spectrum Analyzer



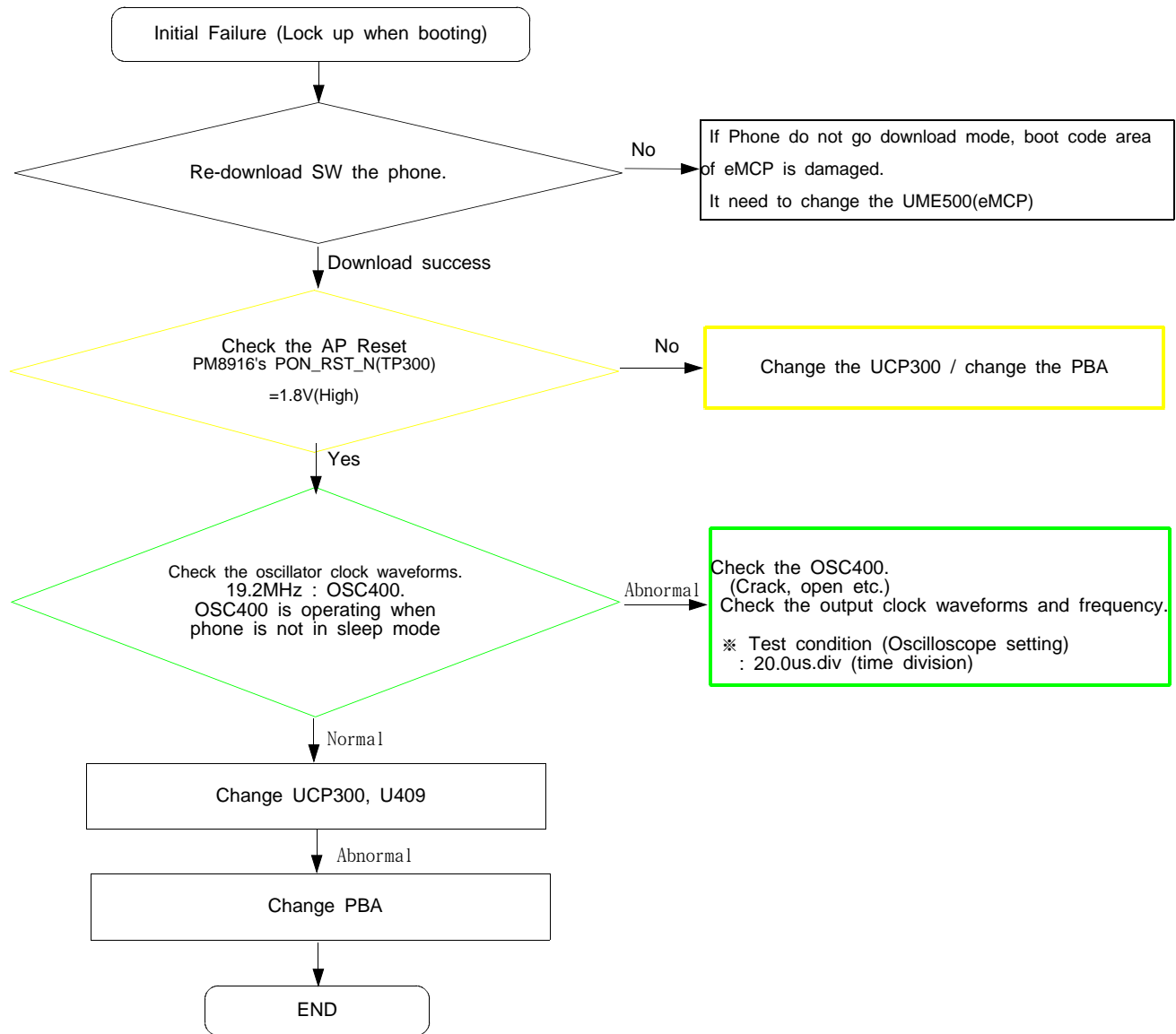
↑ Soldering iron

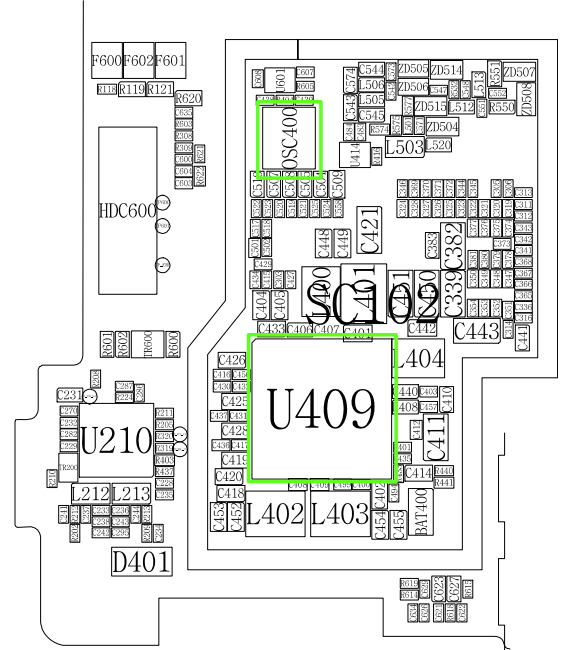
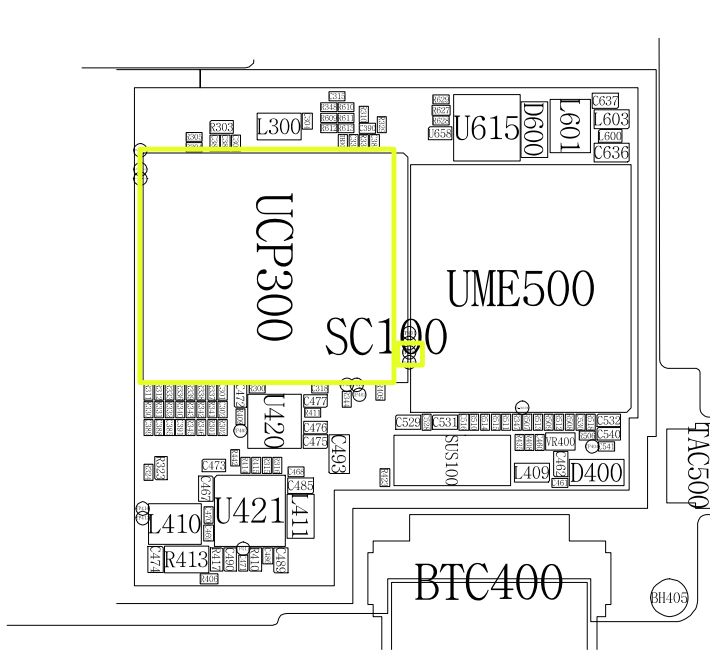
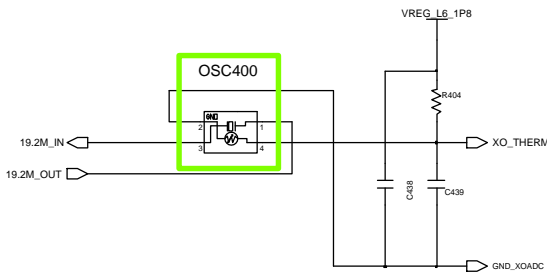
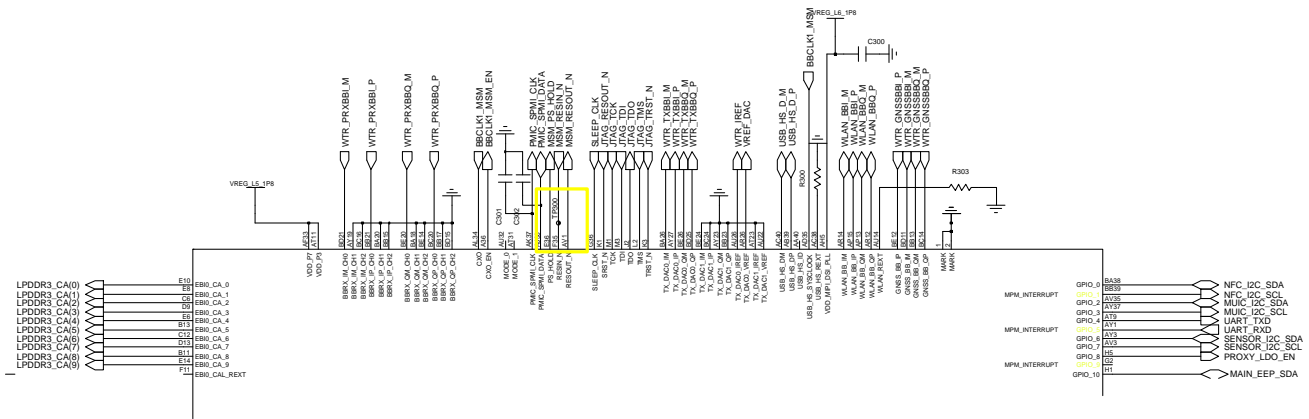
8-3-1. Power On



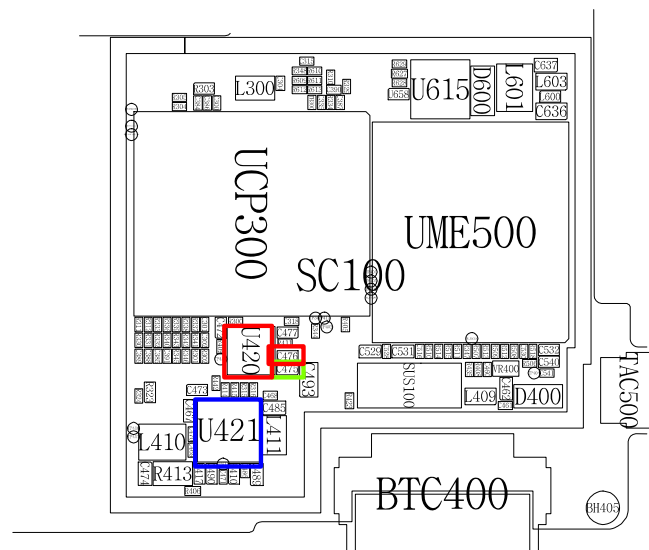
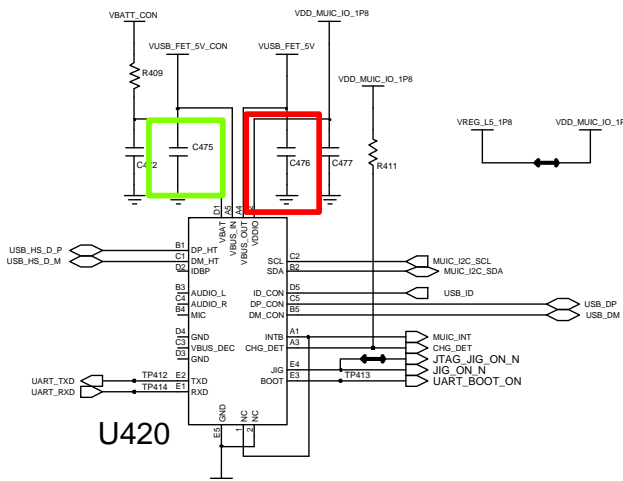
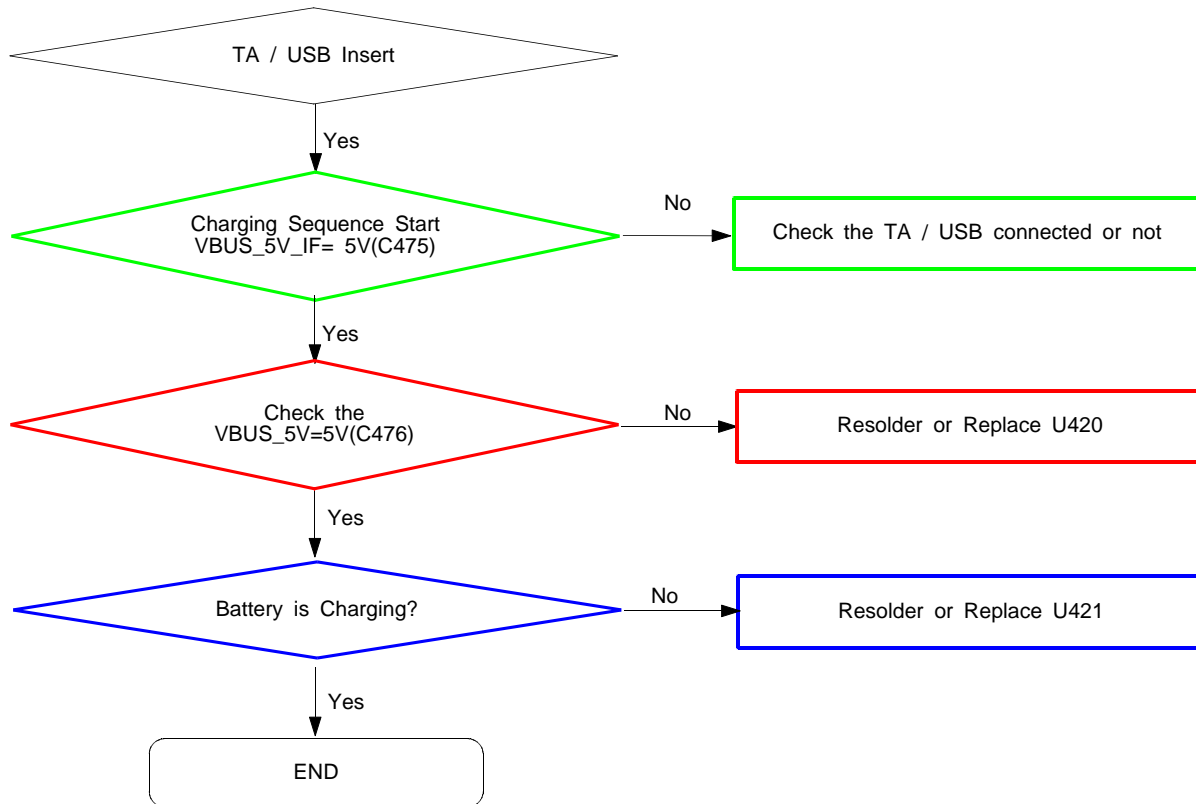


8-3-2. Initial (Lock up)

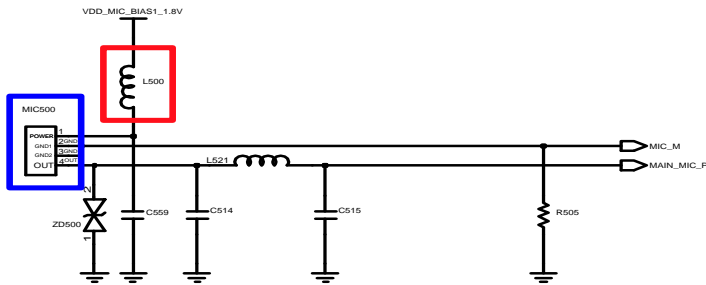
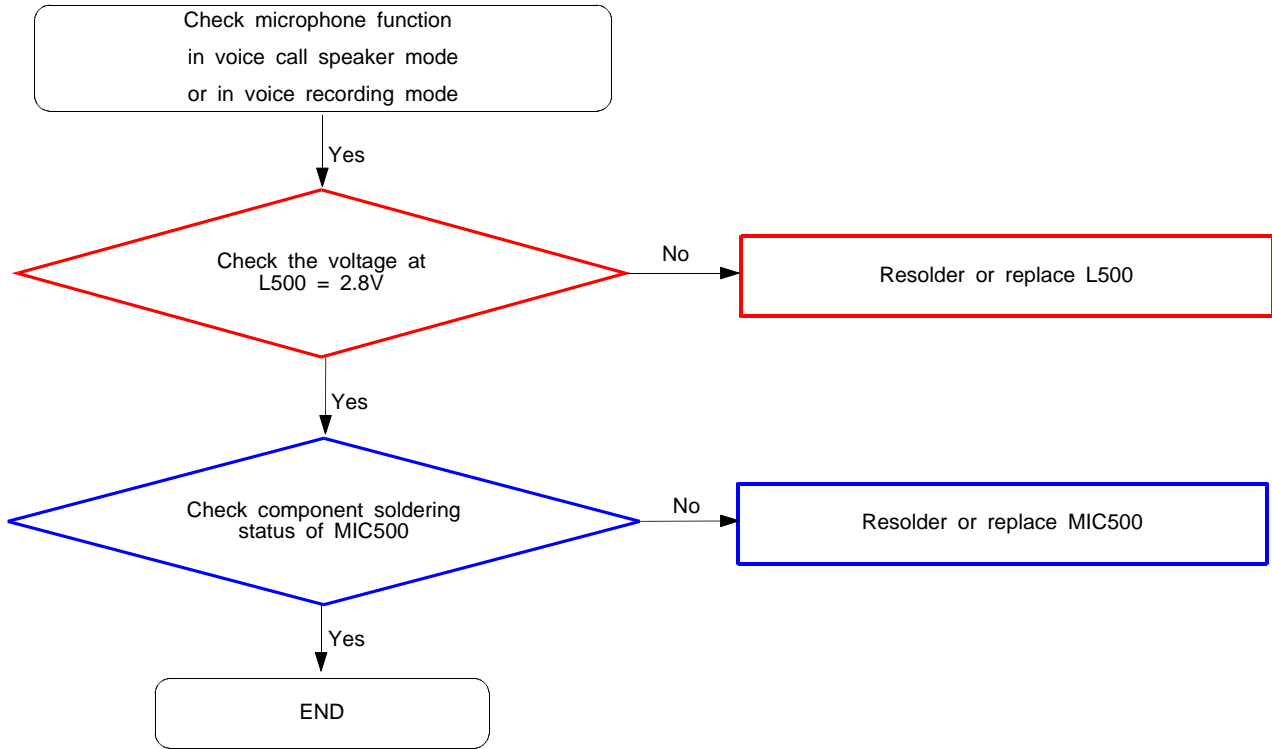




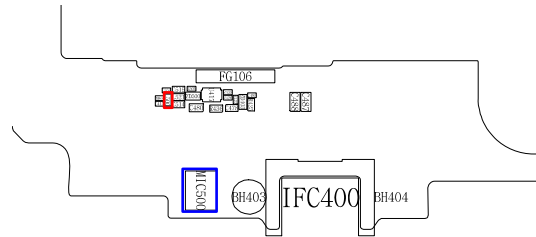
8-3-3. Charging Part



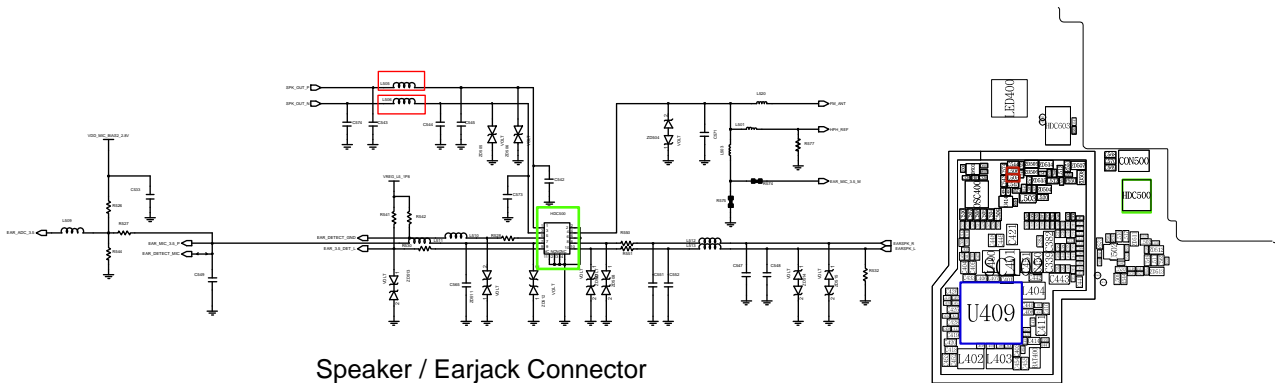
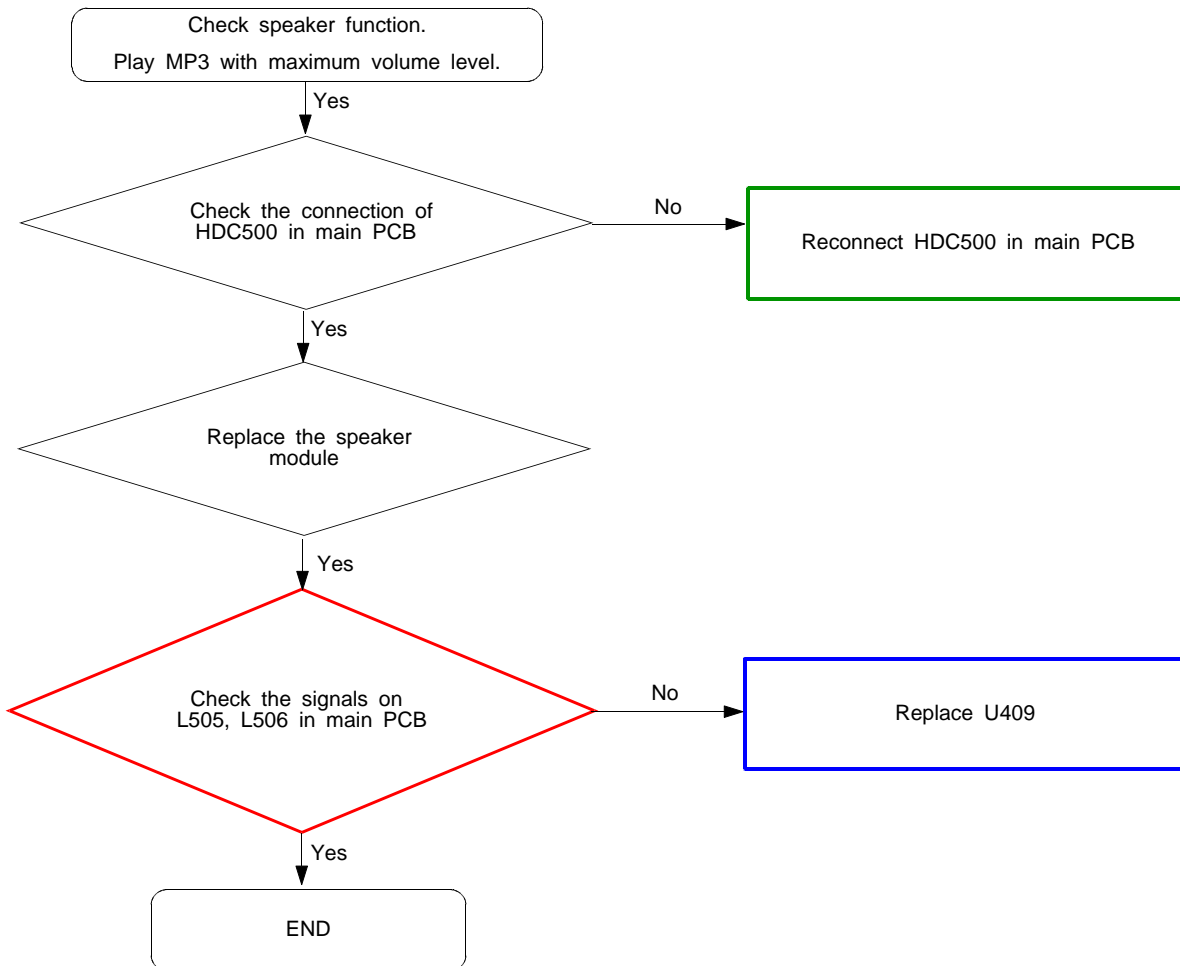
8-3-4. Microphone Part



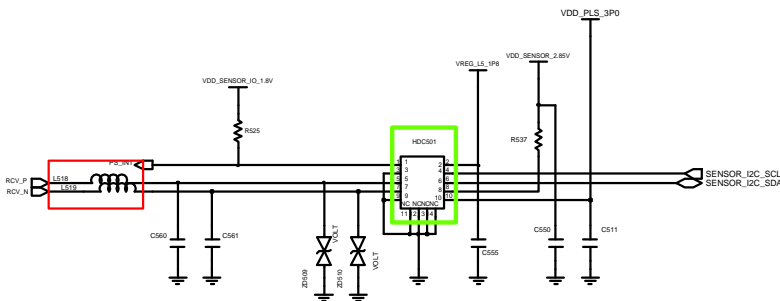
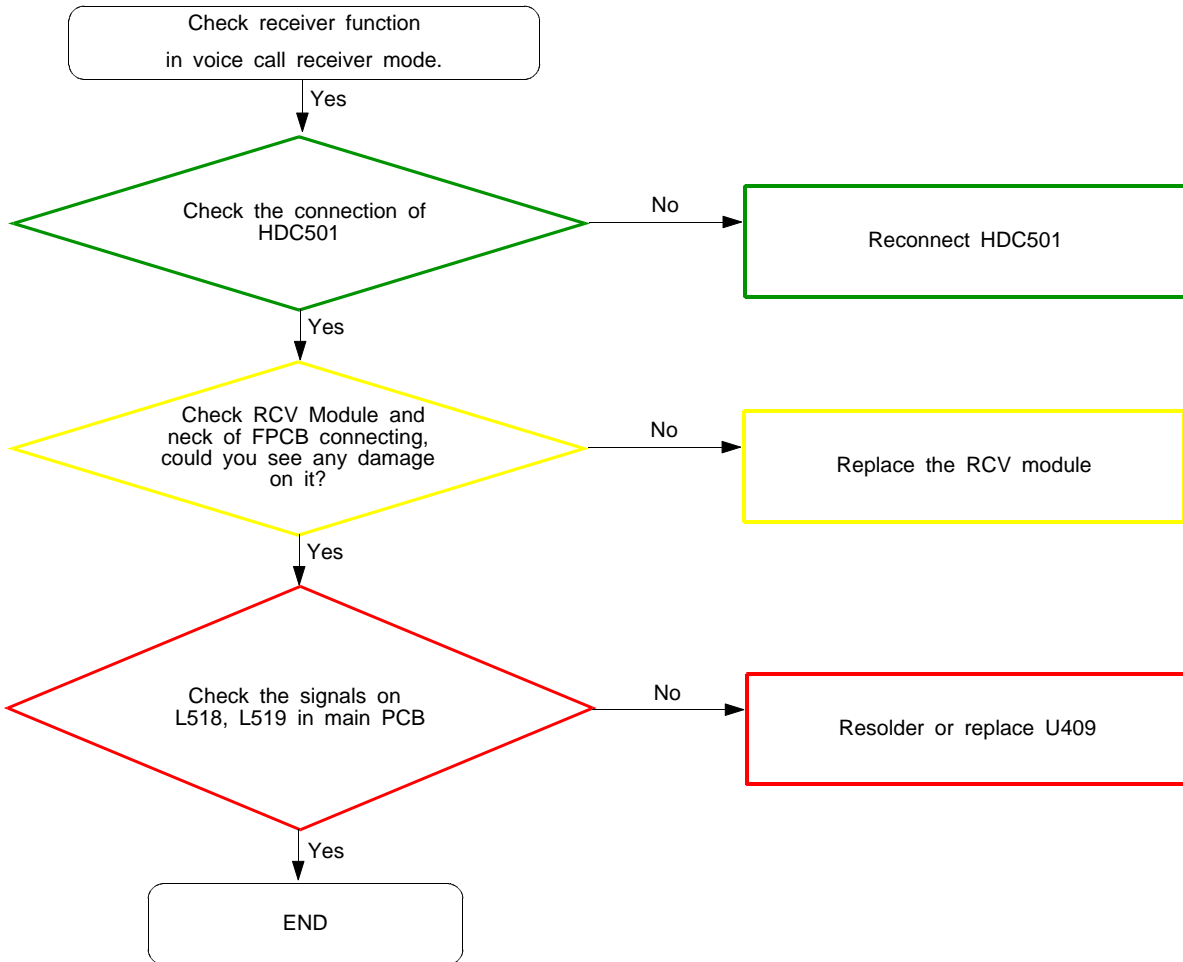
Main MIC



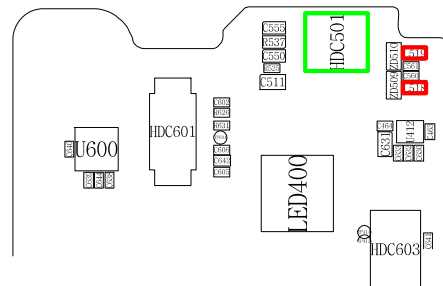
8-3-5. Speaker Part



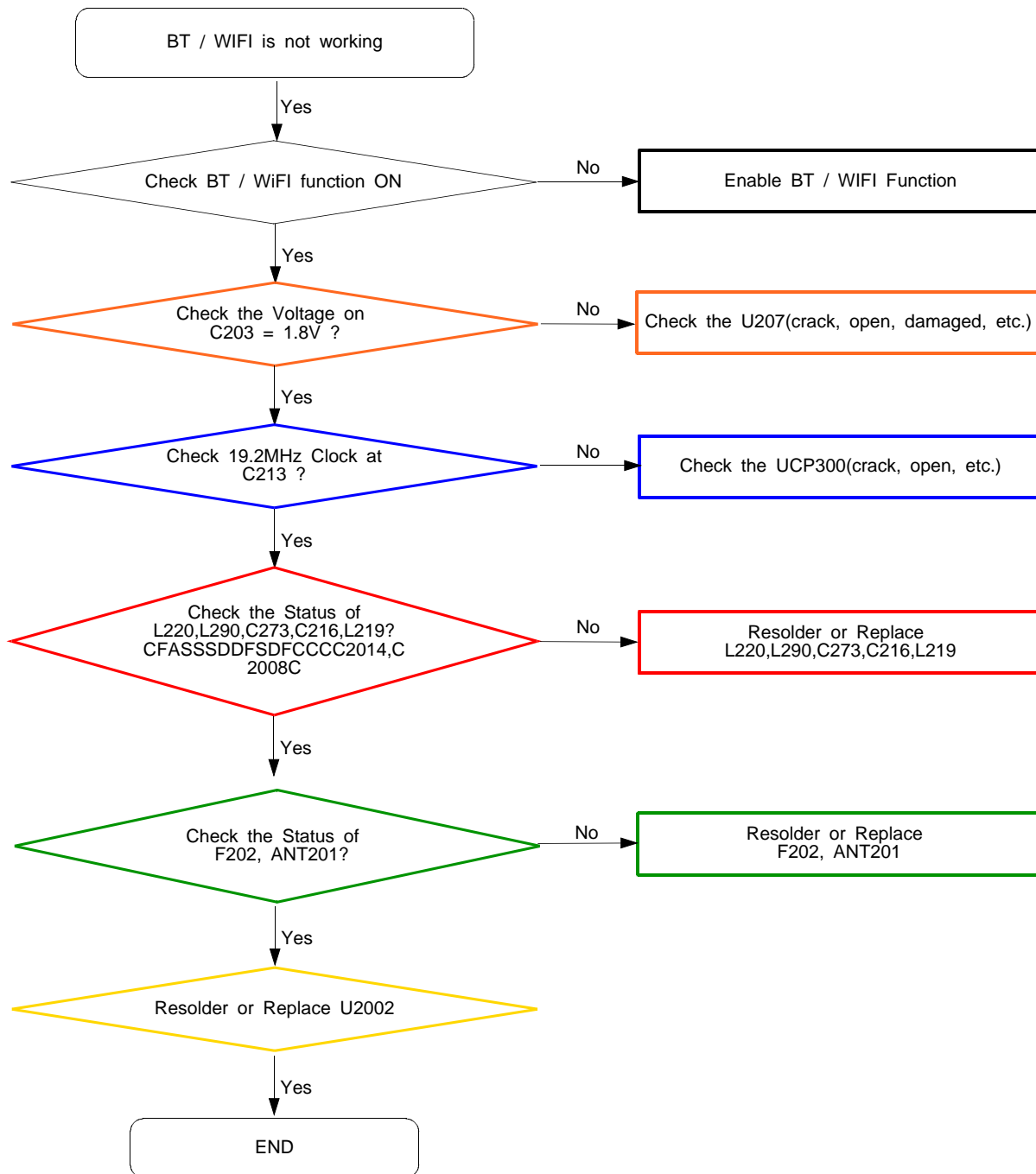
8-3-6. Receiver Part

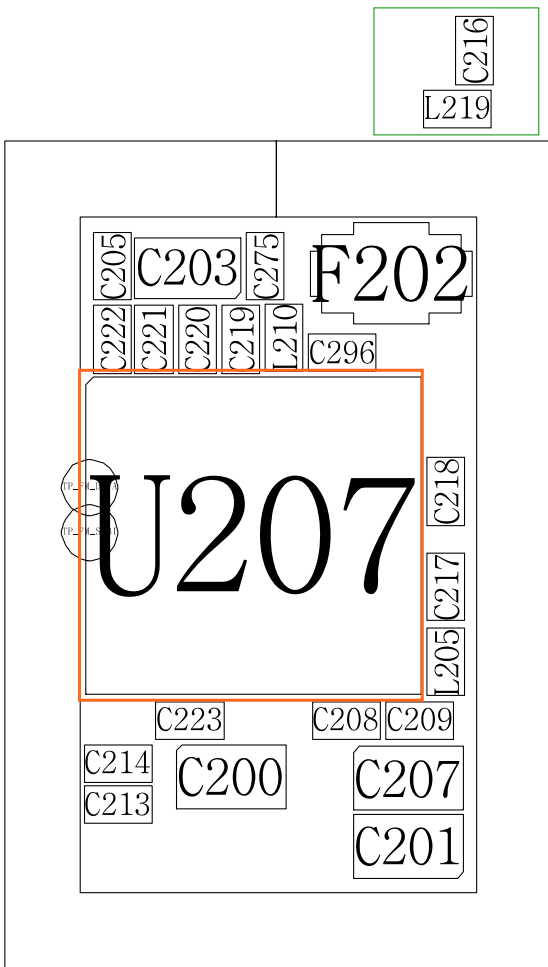
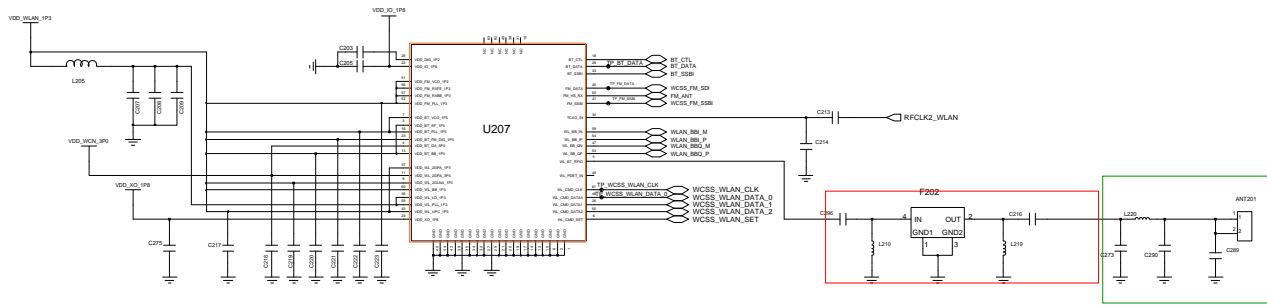


Receiver / Proxy Sensor Connector

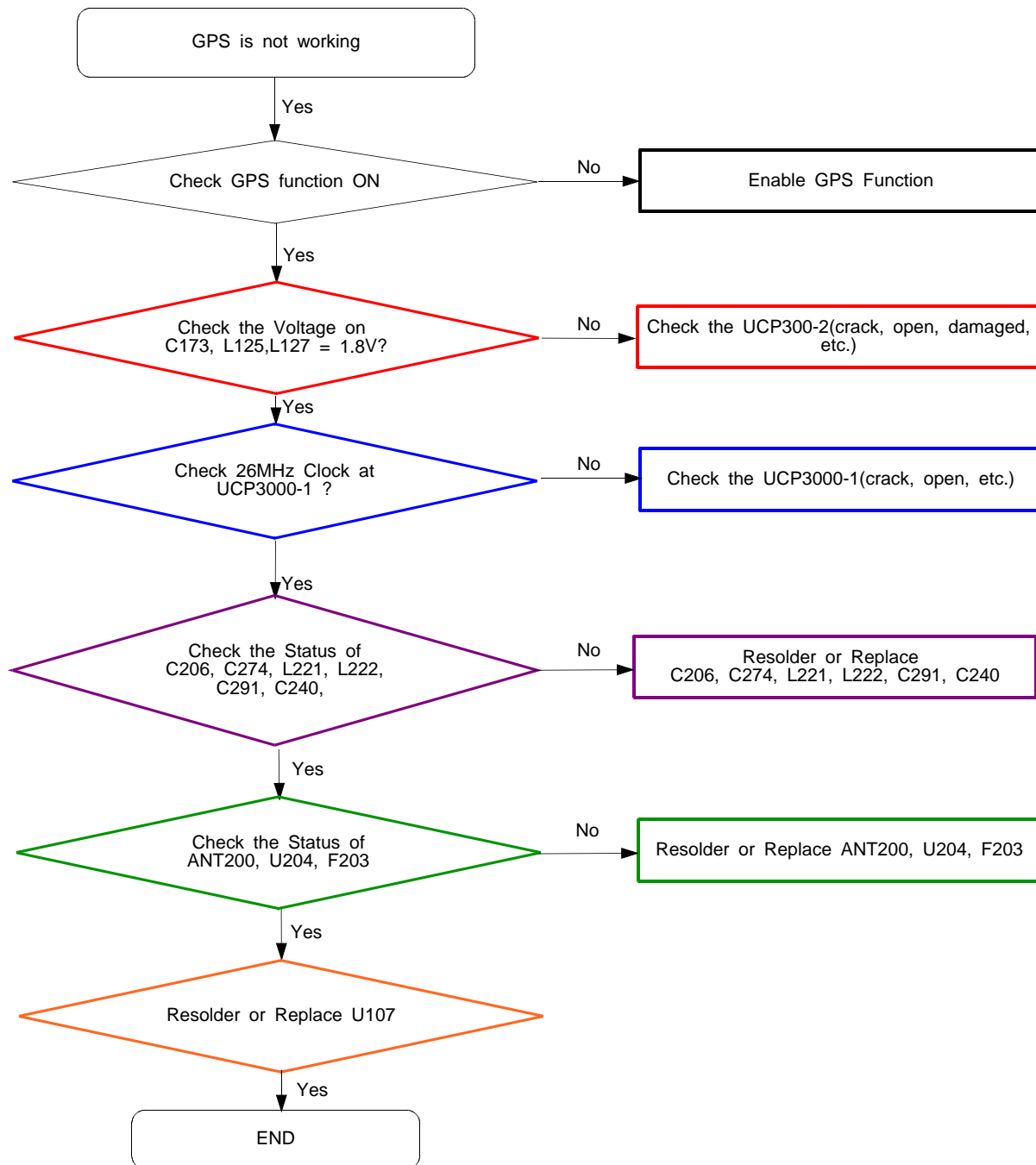


8-3-7. WIFI / BT Part

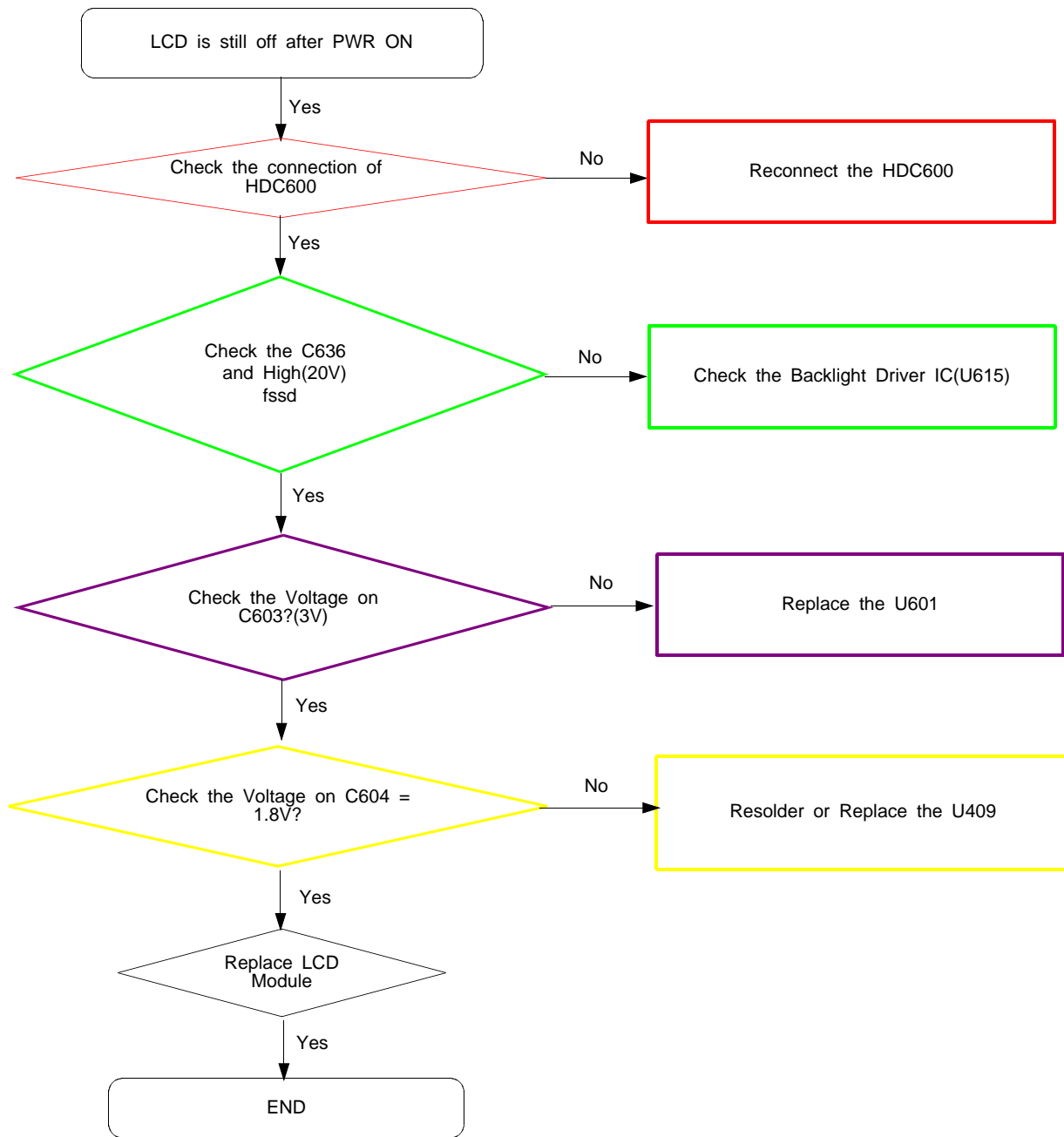


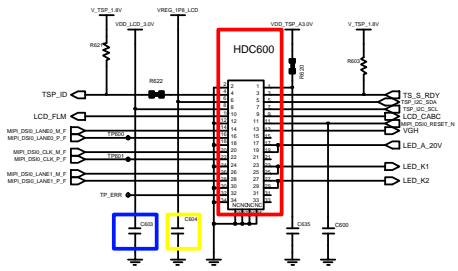


8-3-8. GPS Part

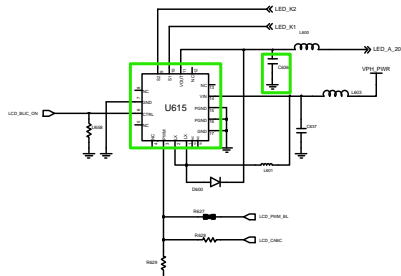


8-3-9. LCD

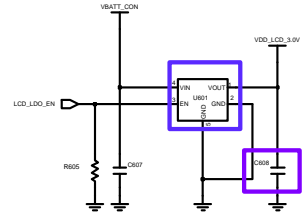




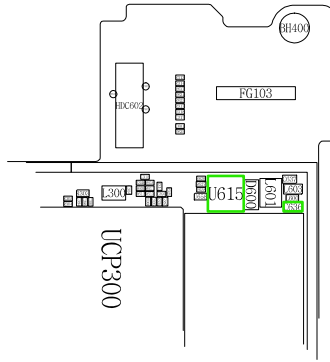
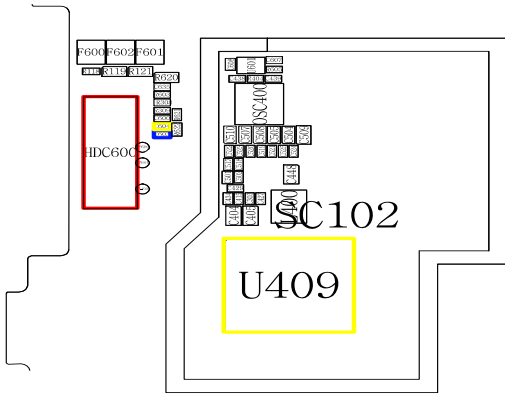
LCD Connector(5")



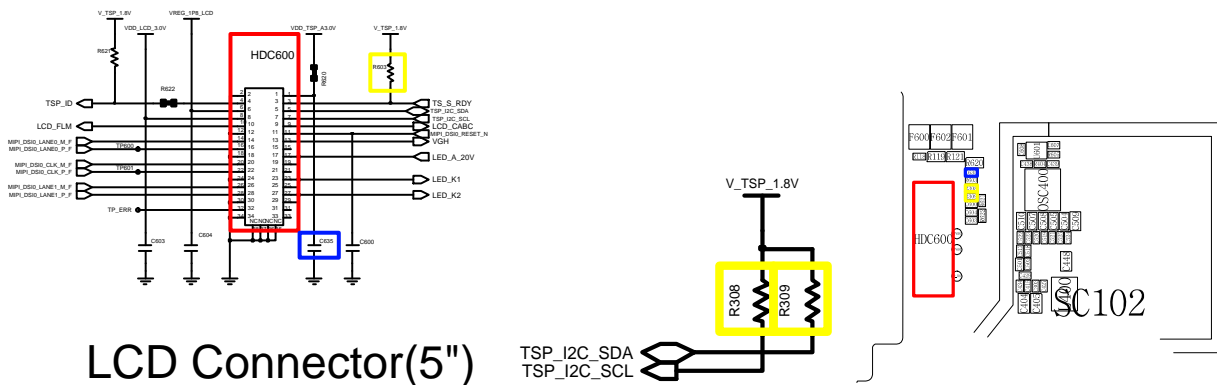
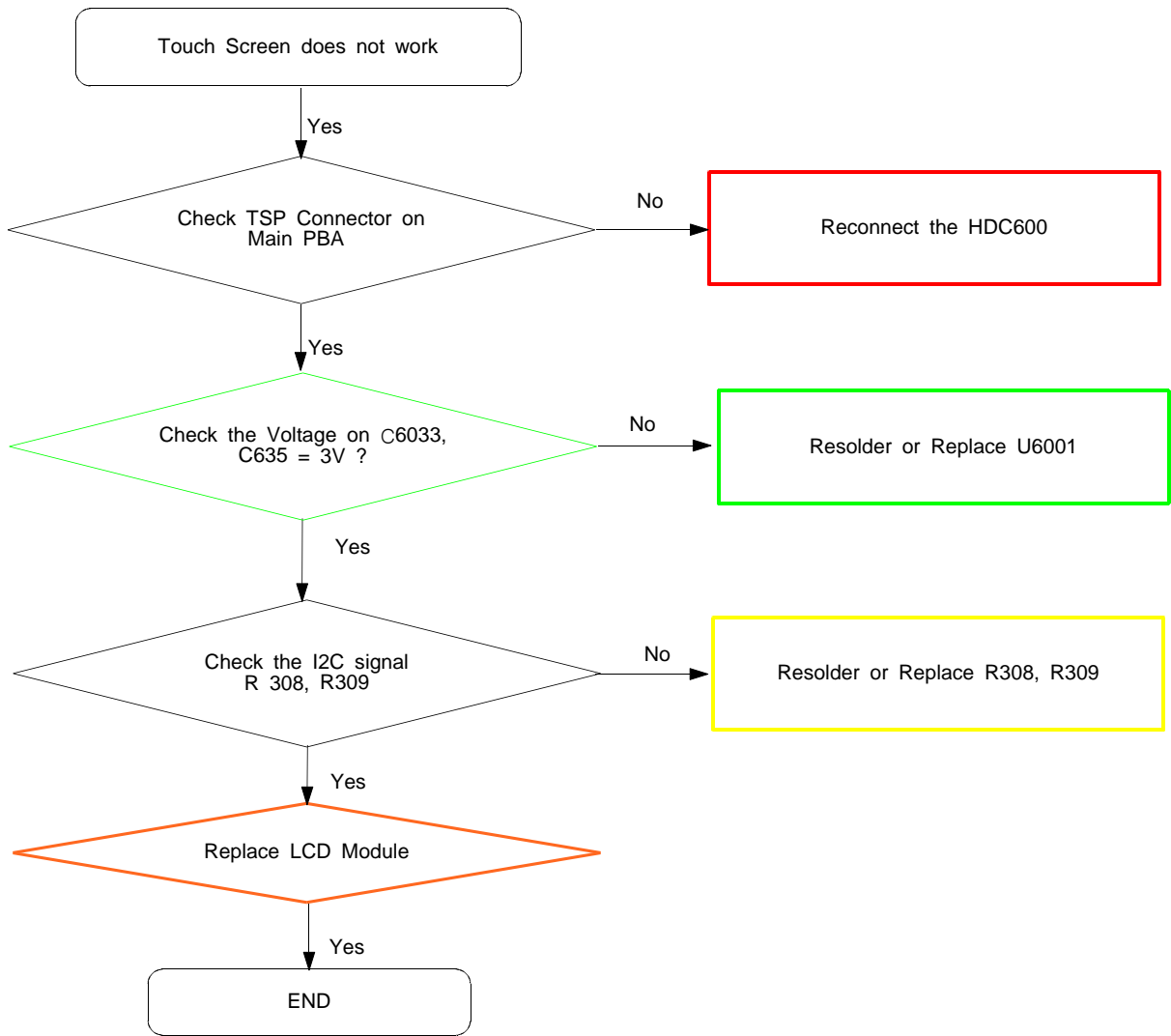
10 LED LCD DCDC



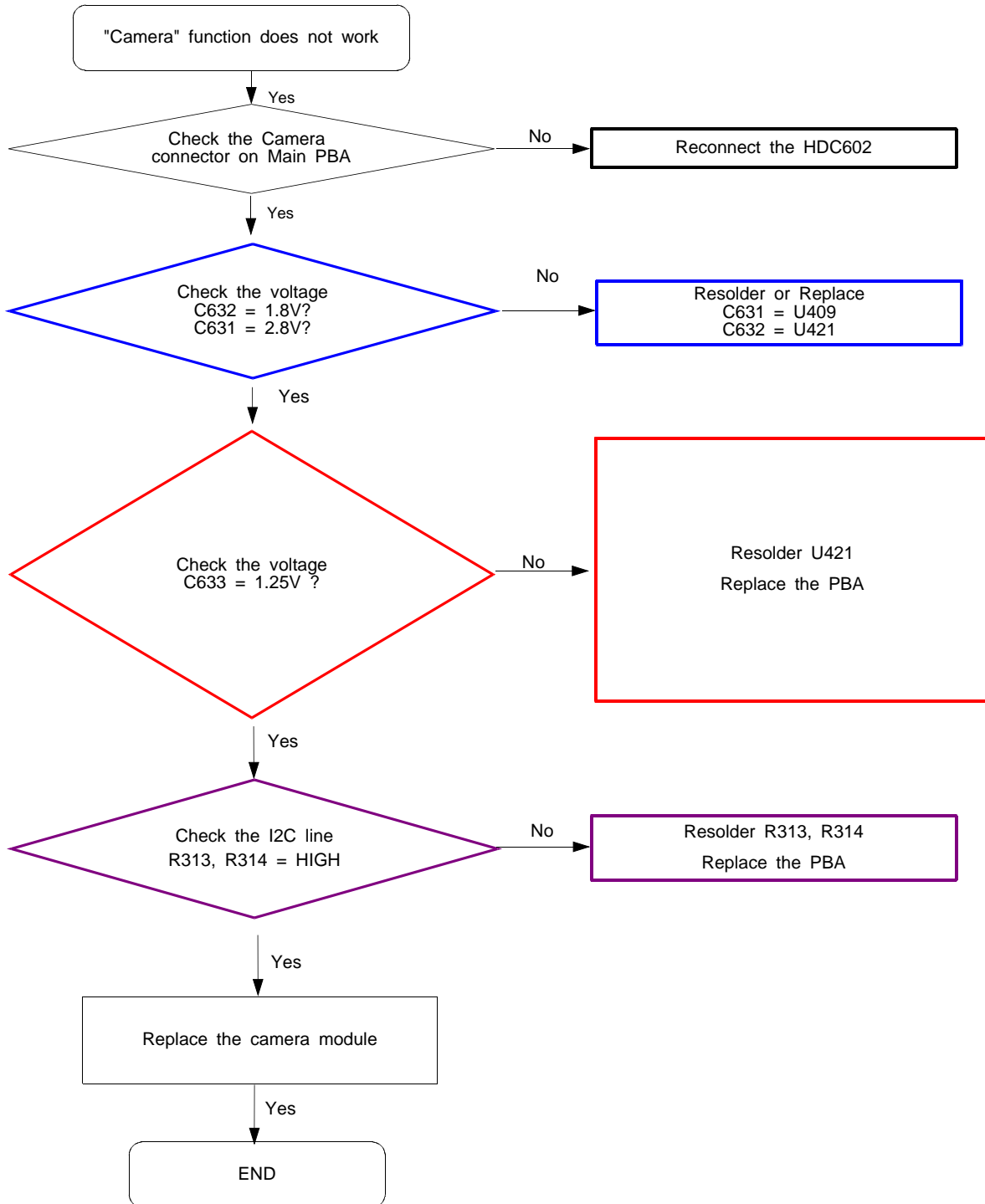
LCD LDO(150mA)

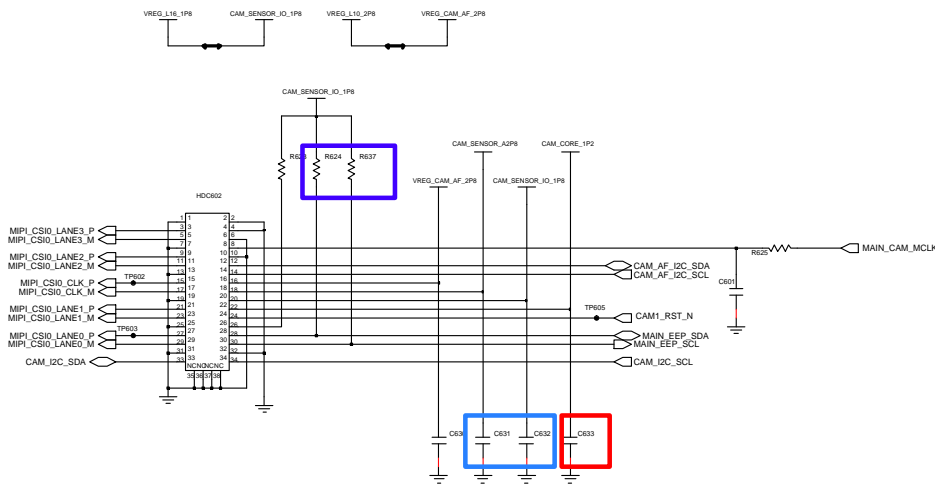


8-3-10. TSP

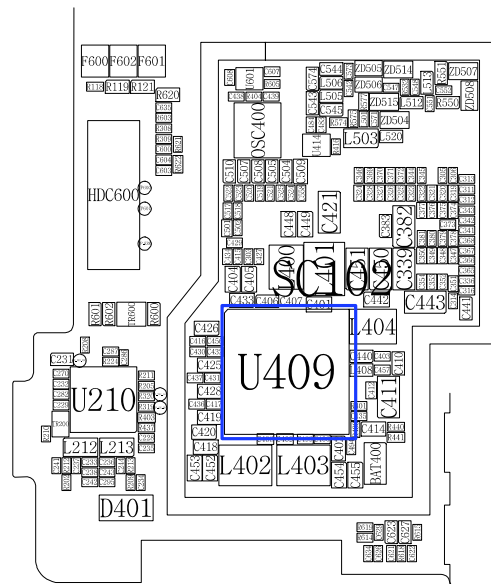
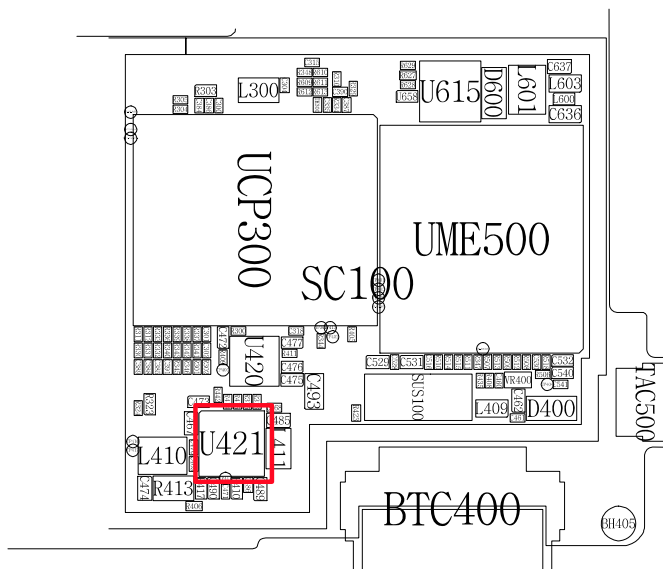
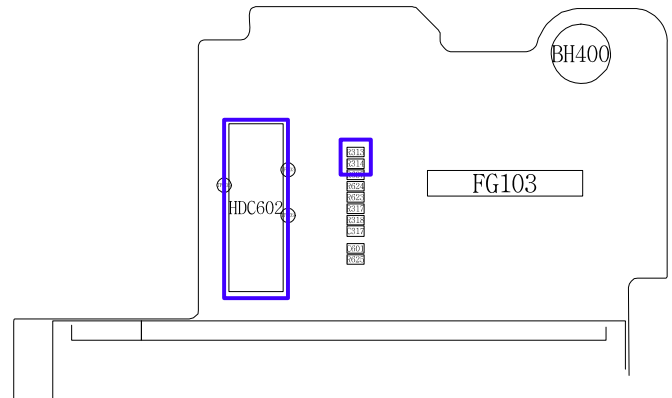
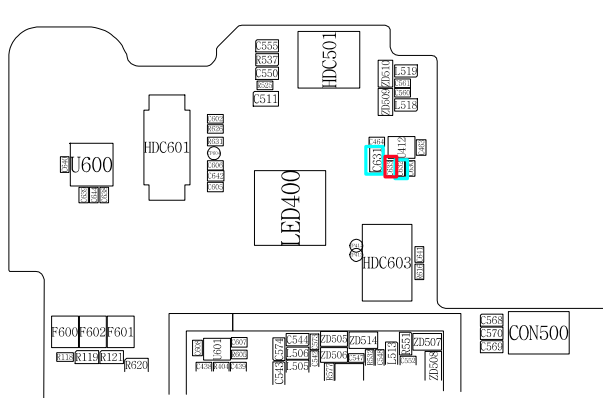


8-3-11. 8M CAM (Main)

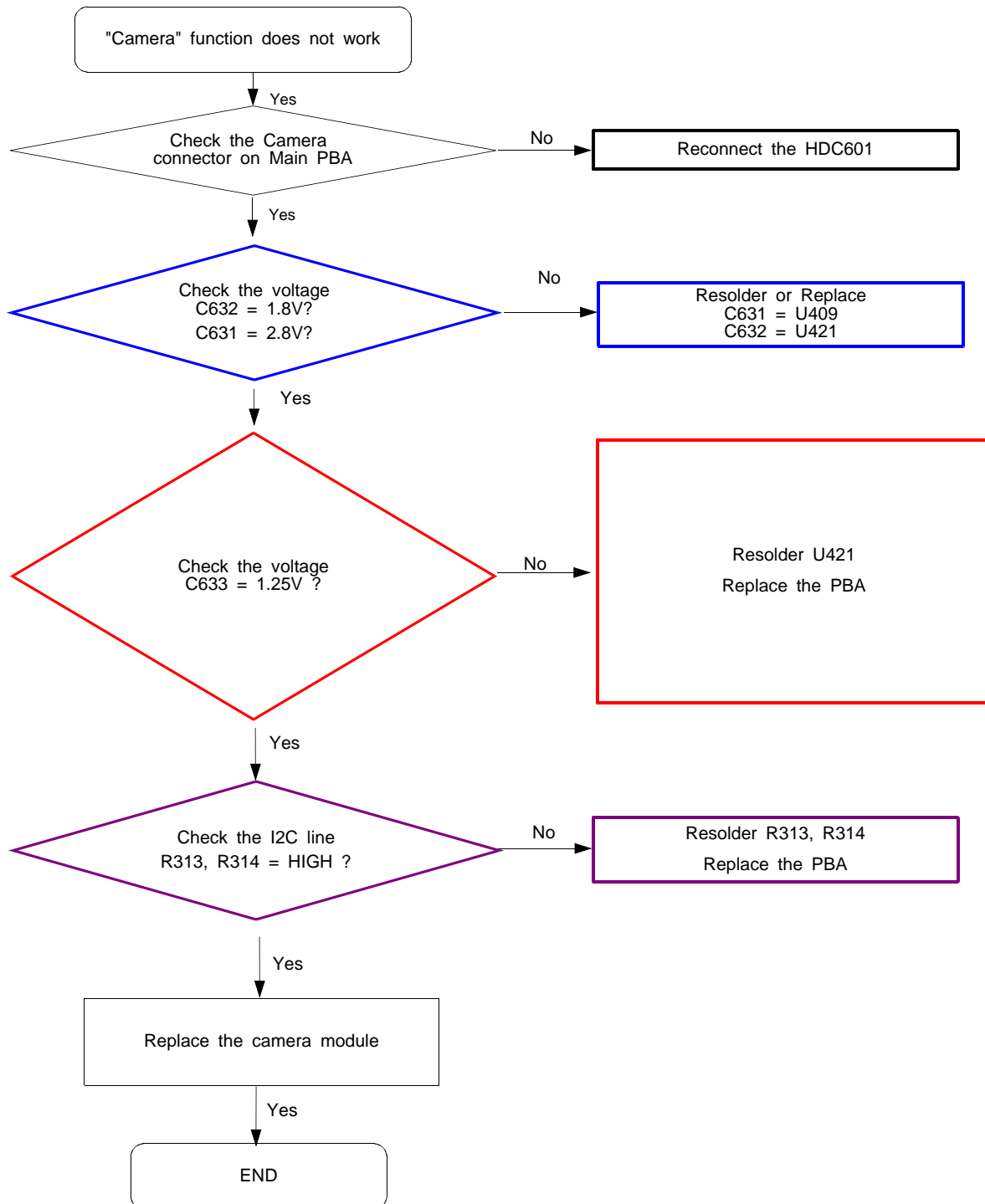


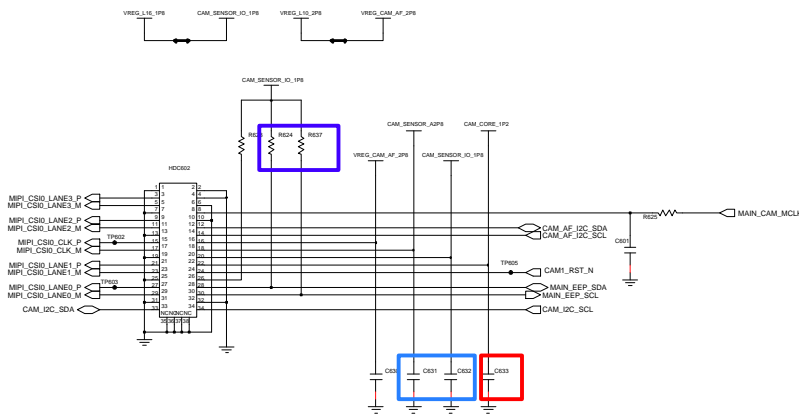


8M_CAM Connector (MIPI)

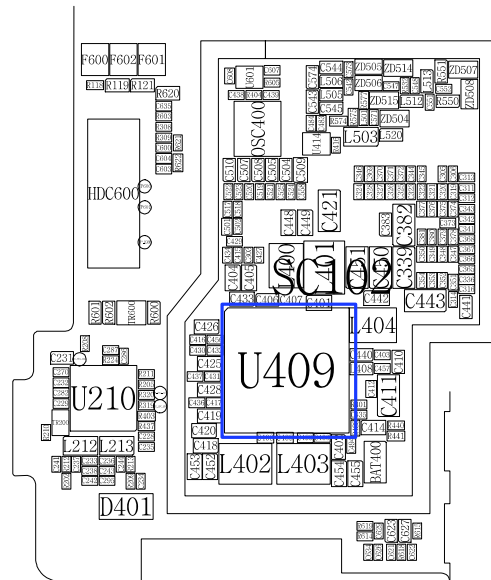
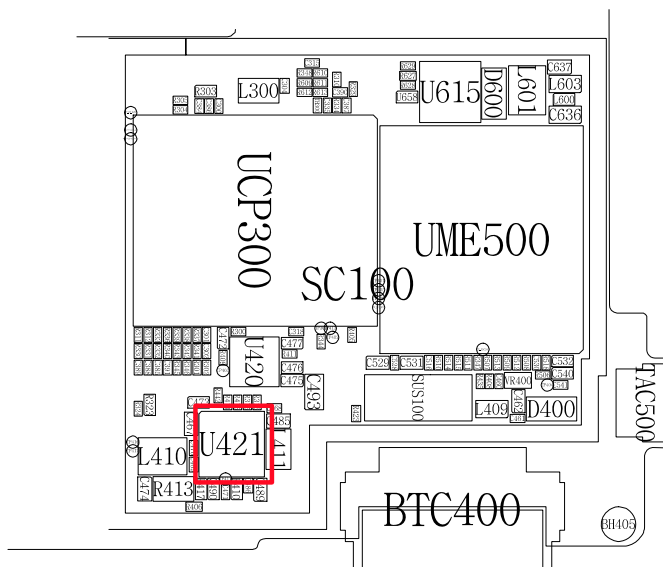
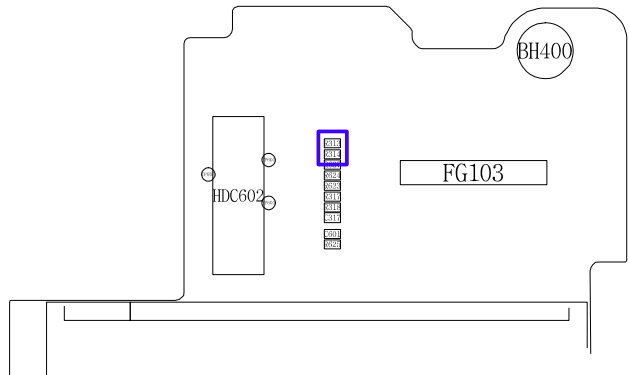
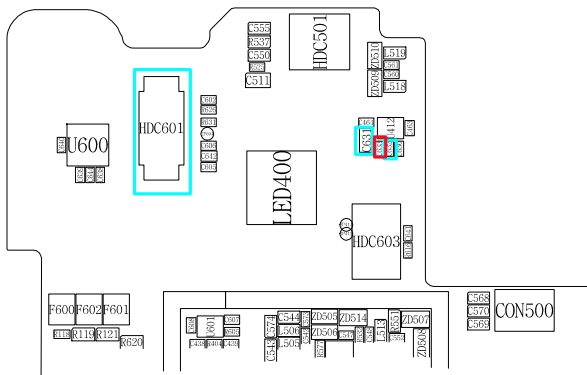


8-3-12. 5M CAM (Sub)

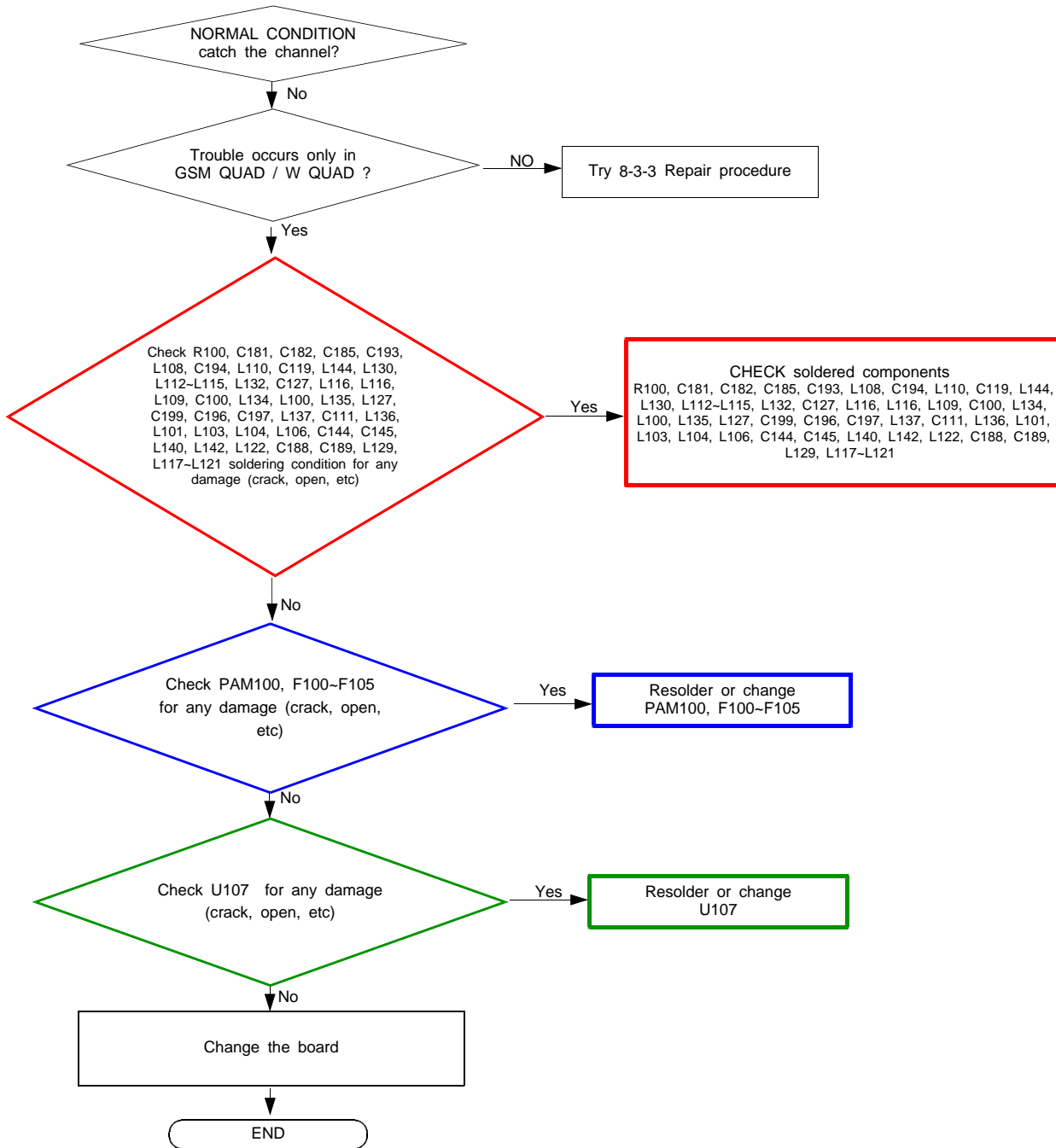


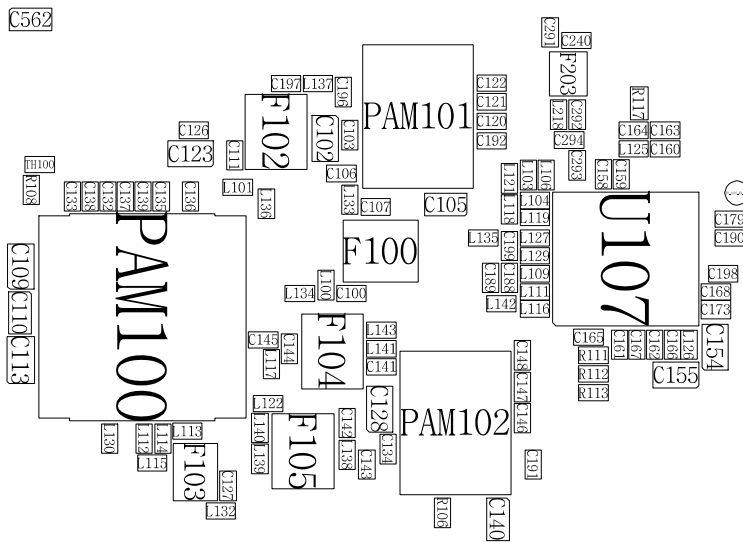
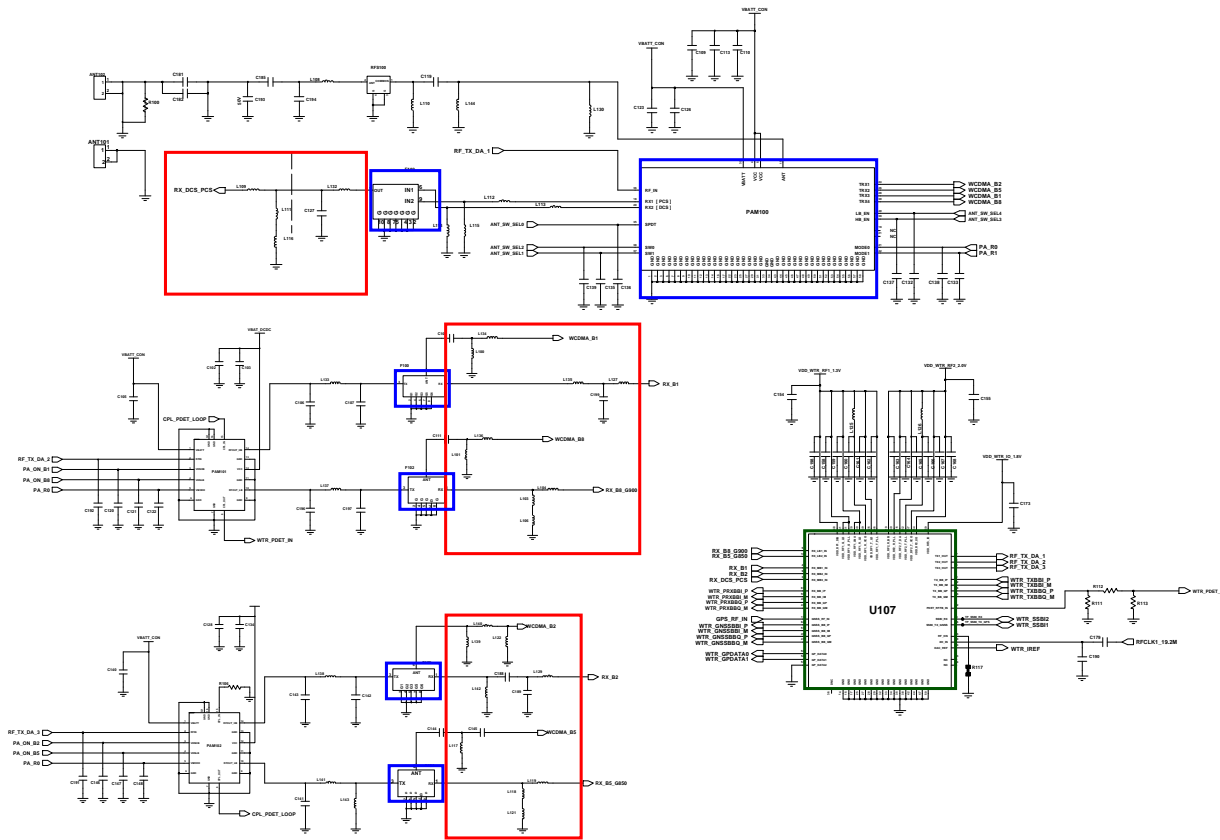


8M_CAM Connector (MIPI)



8-3-13. GSM 850,900,1800,1900 / WCDMA BAND 1,2,5,8 수신부(RX)





8-3-14. GSM 850,900,1800,1900 / WCDMA BAND 1,2,5,8 송신부(TX)

