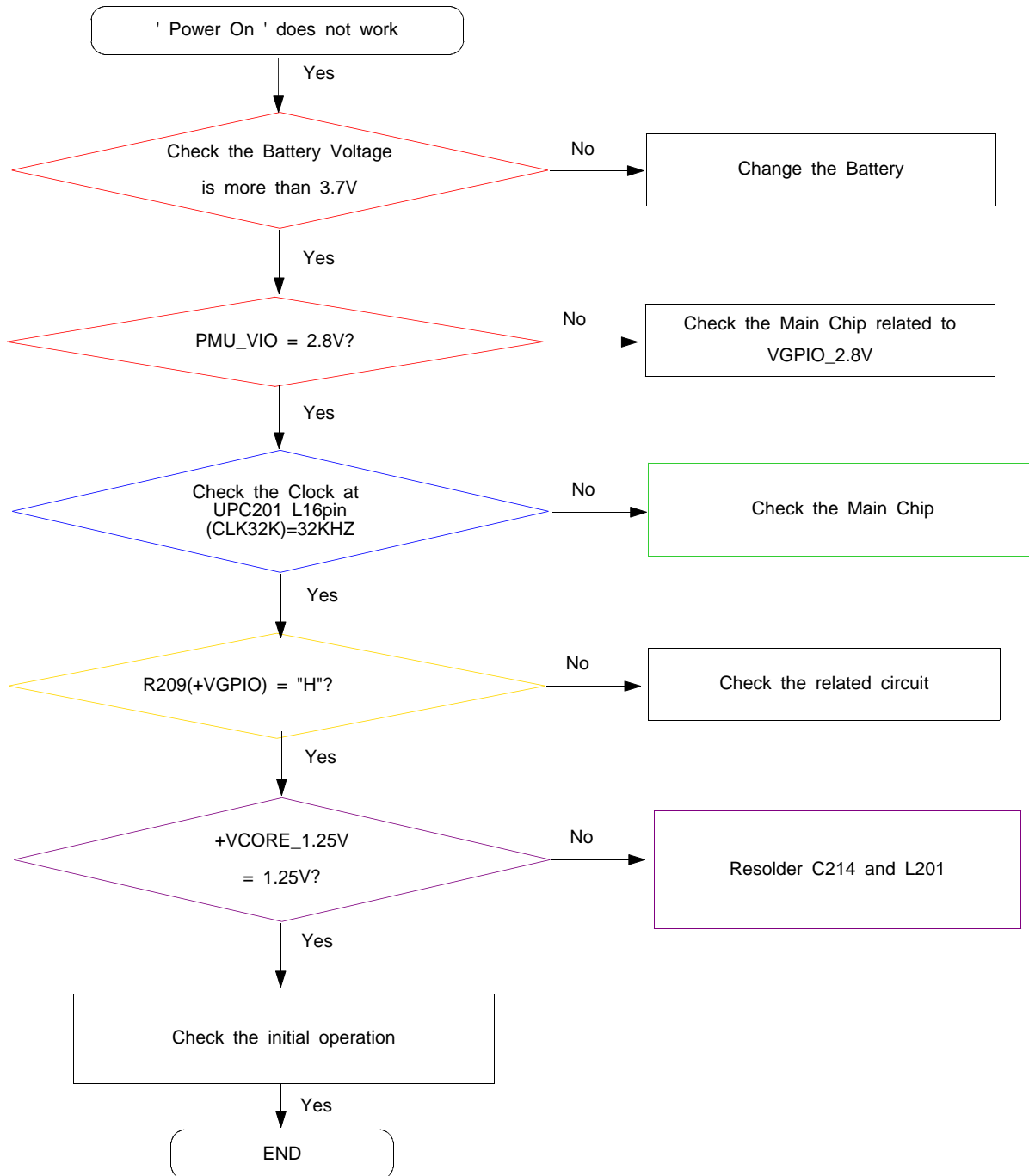
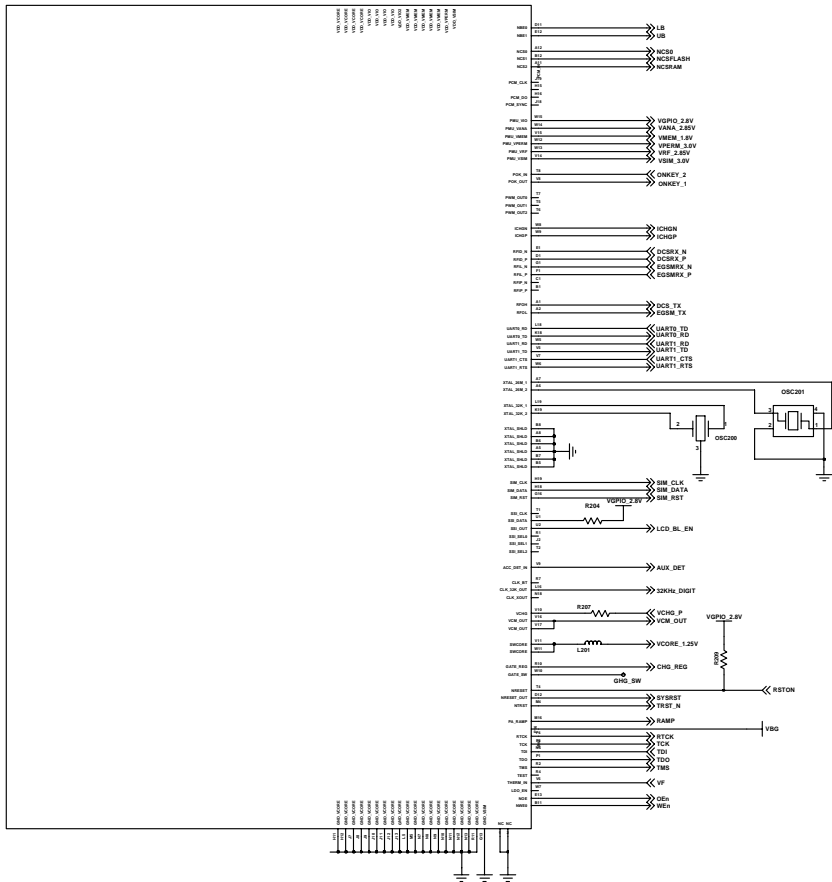
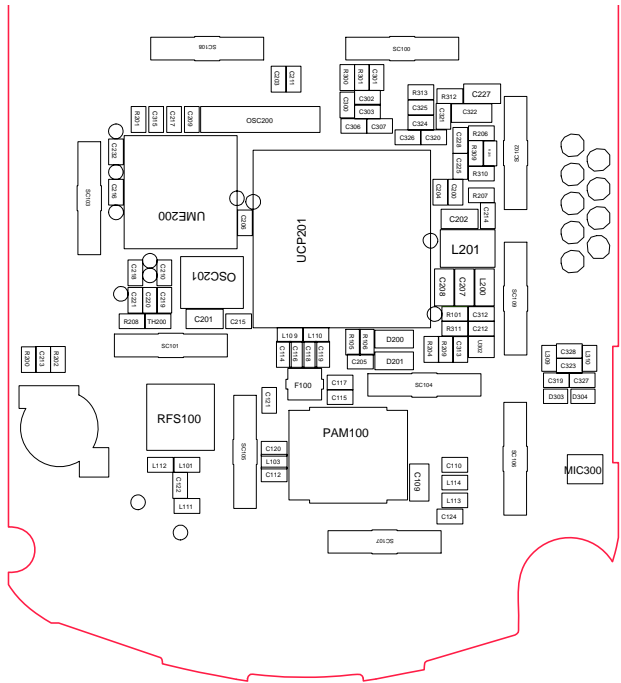


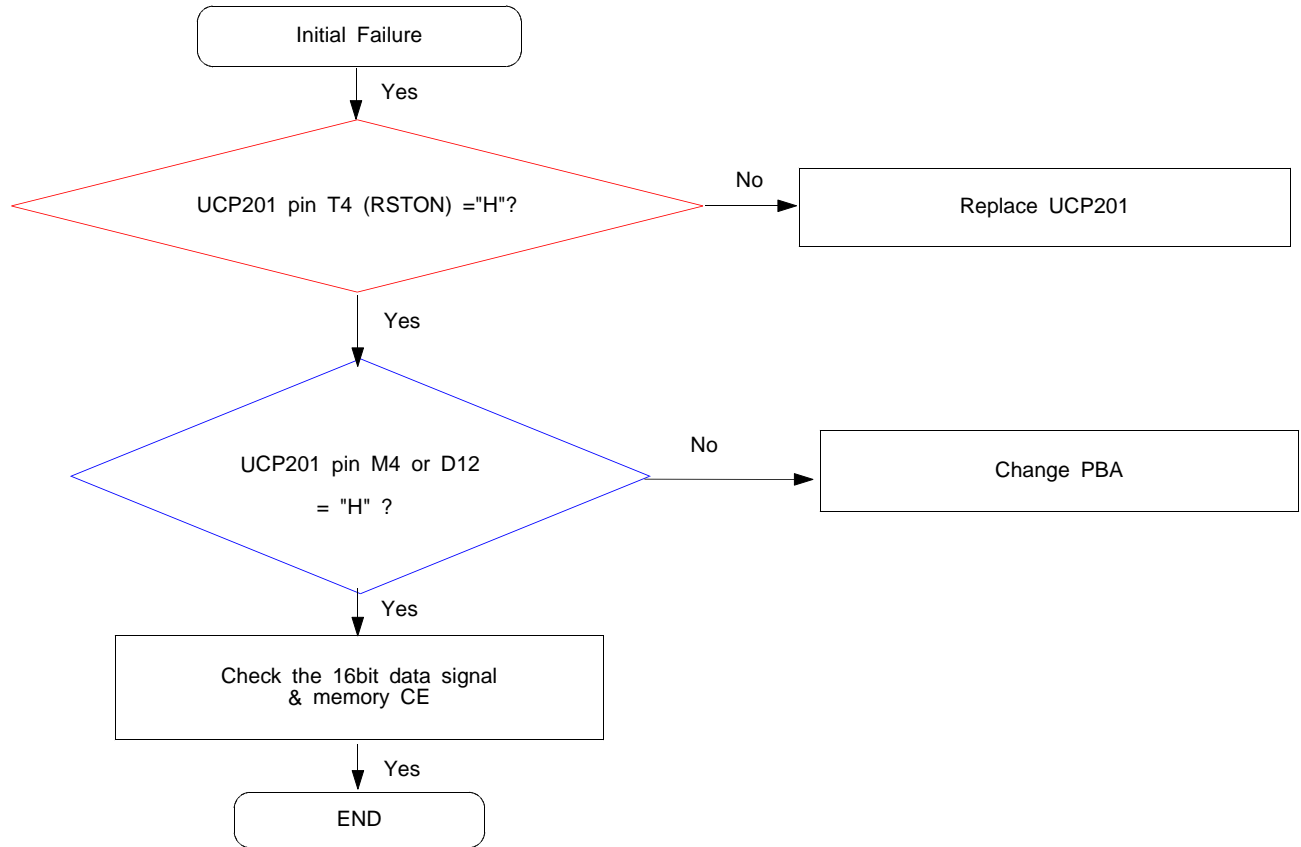
# 9. Flow Chart of Troubleshooting

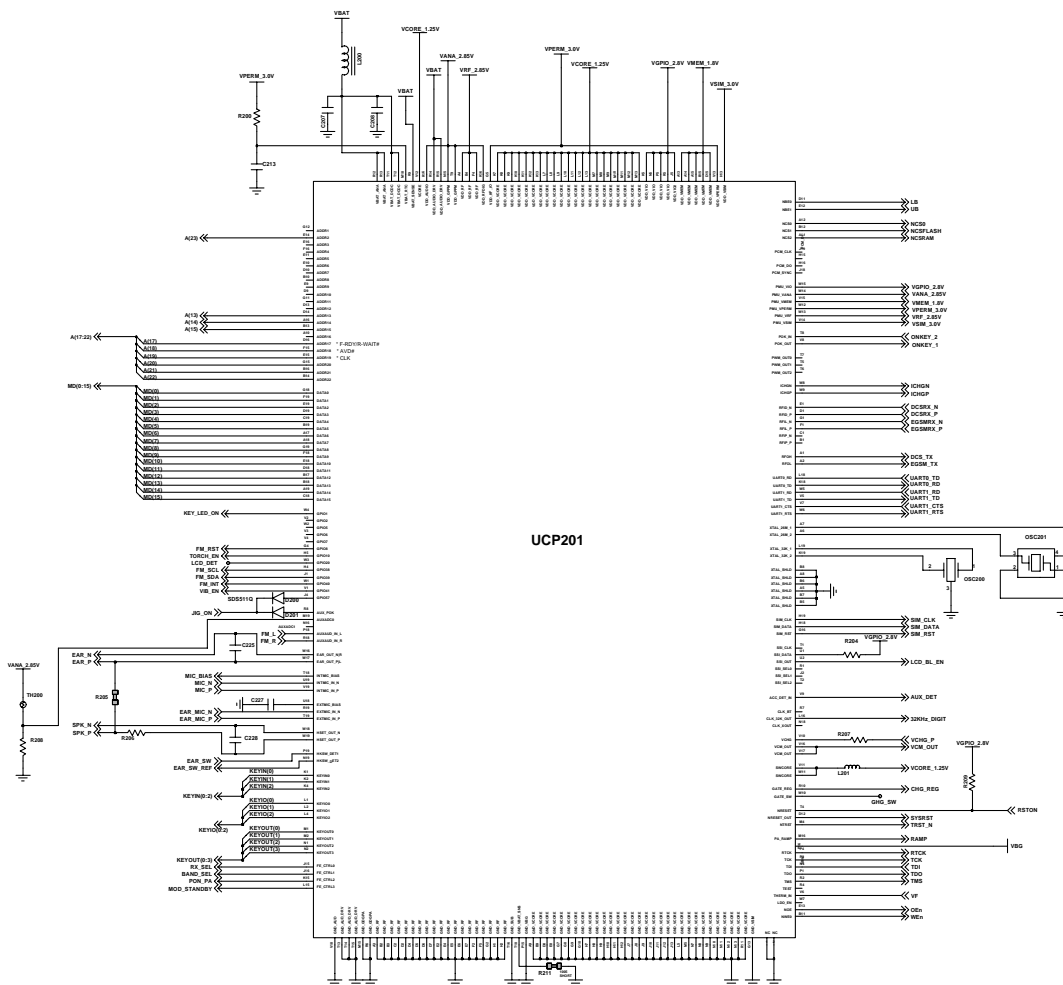
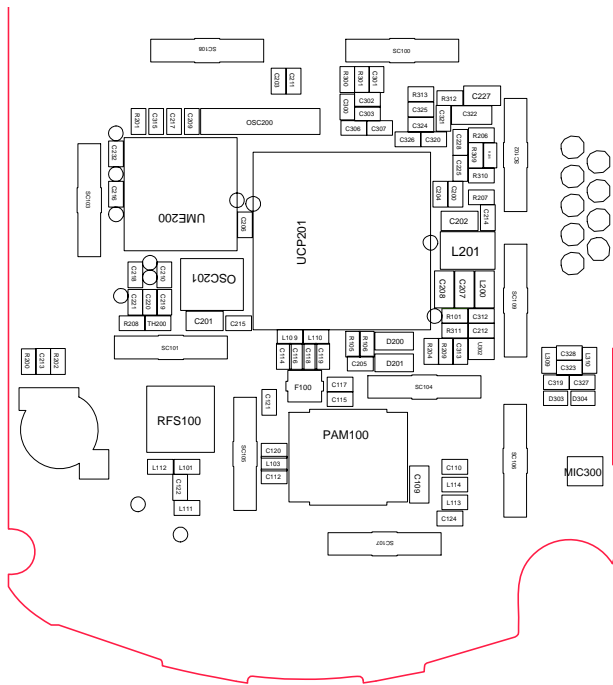
## 9-1. Power On



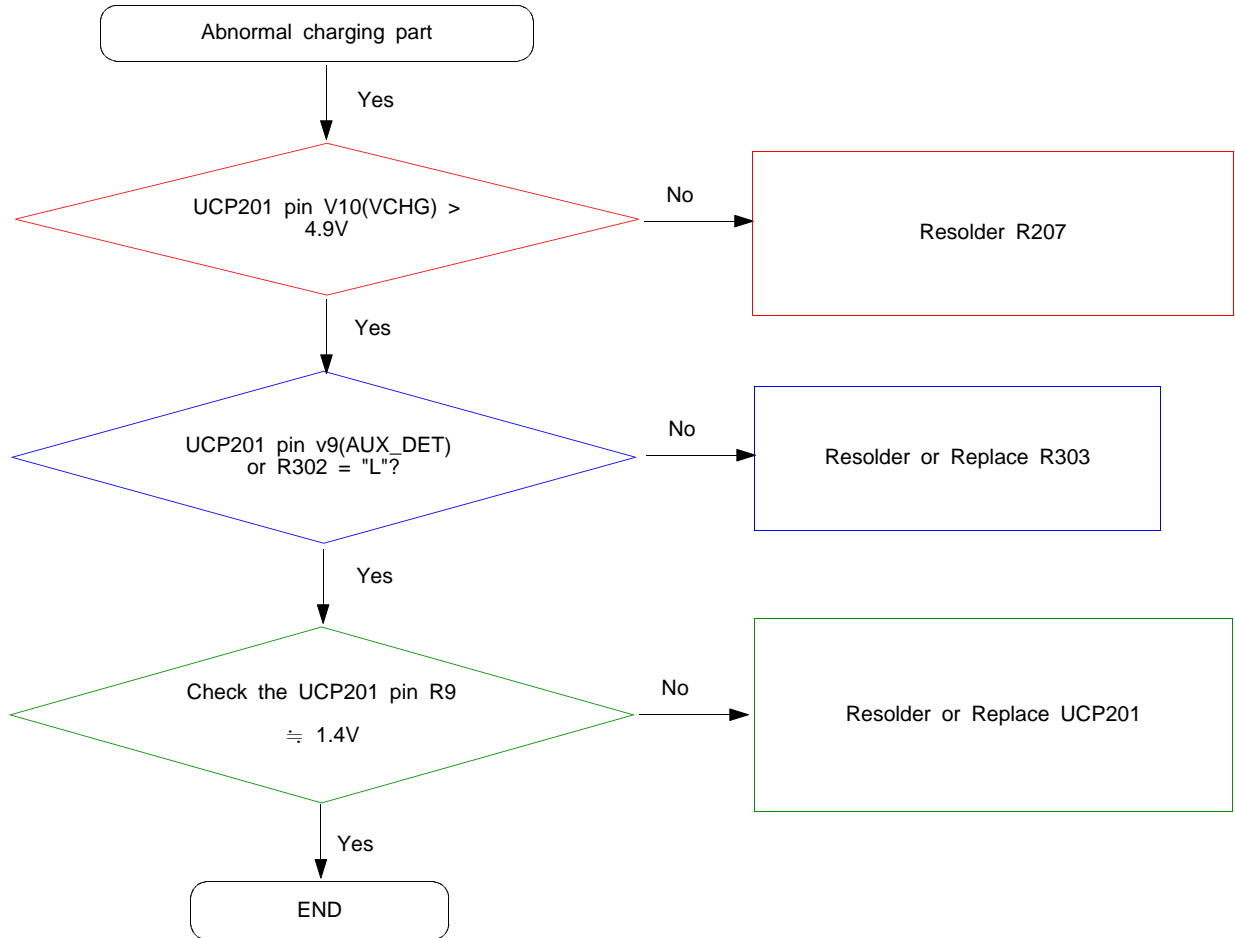


## 9-2. Initial



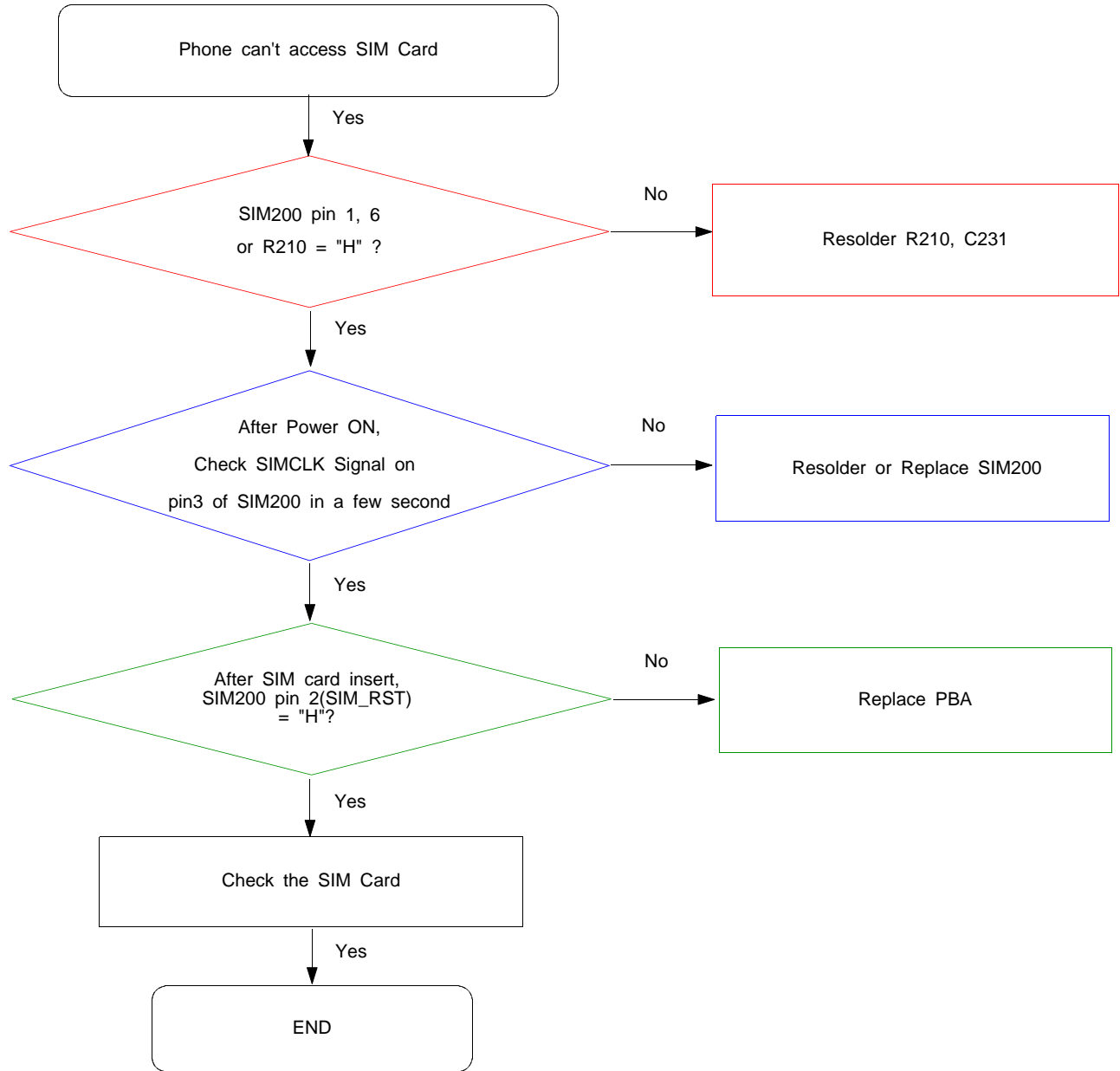


### 9-3. Charging Part





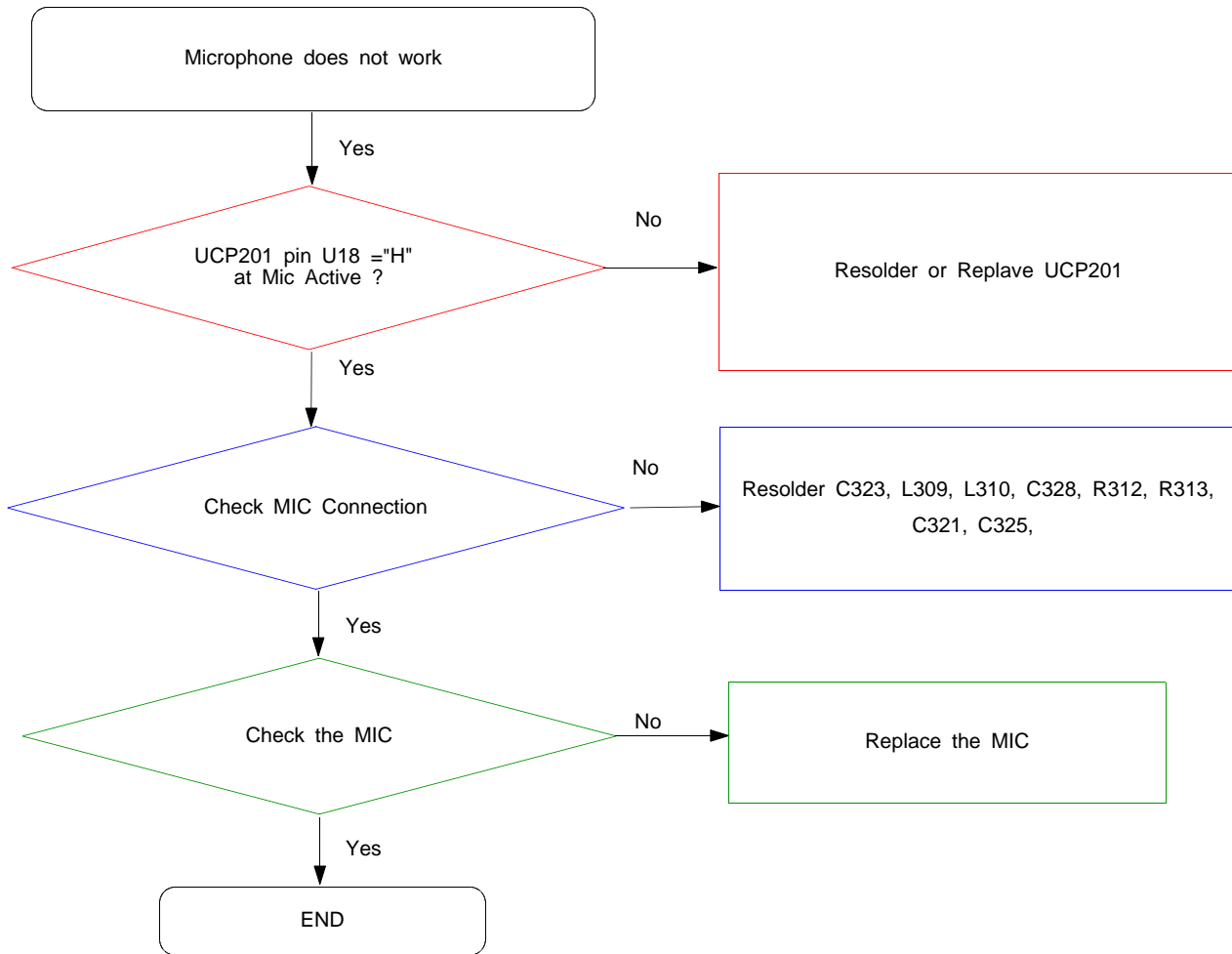
### 9-4. Sim Part

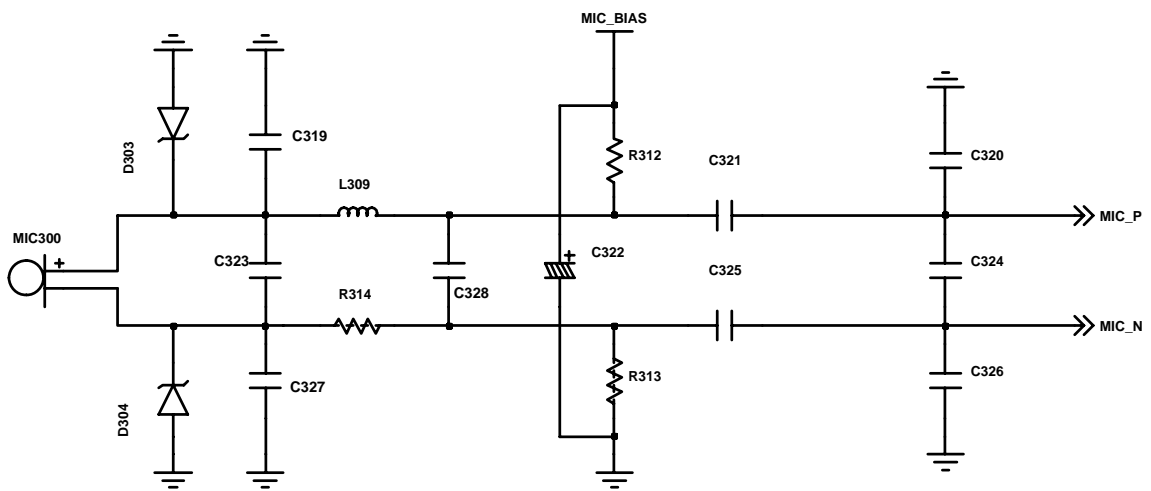
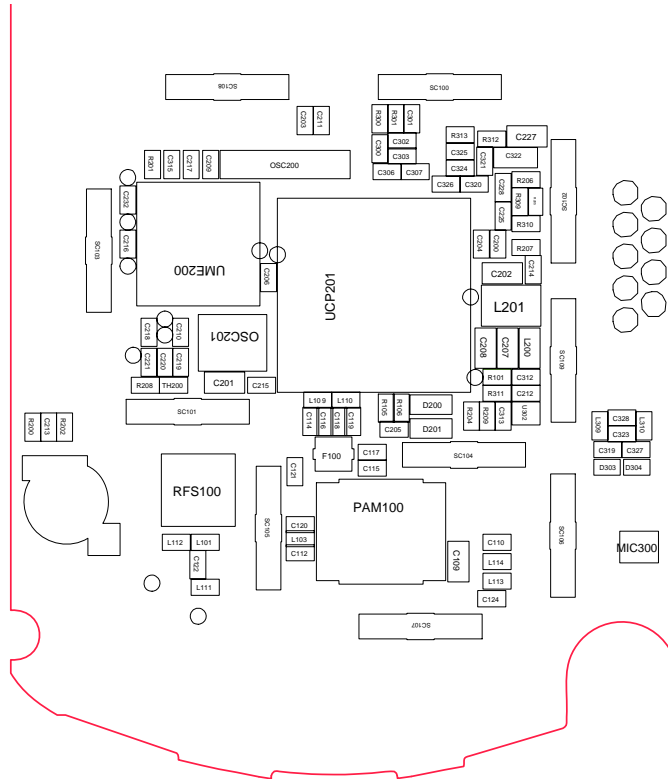




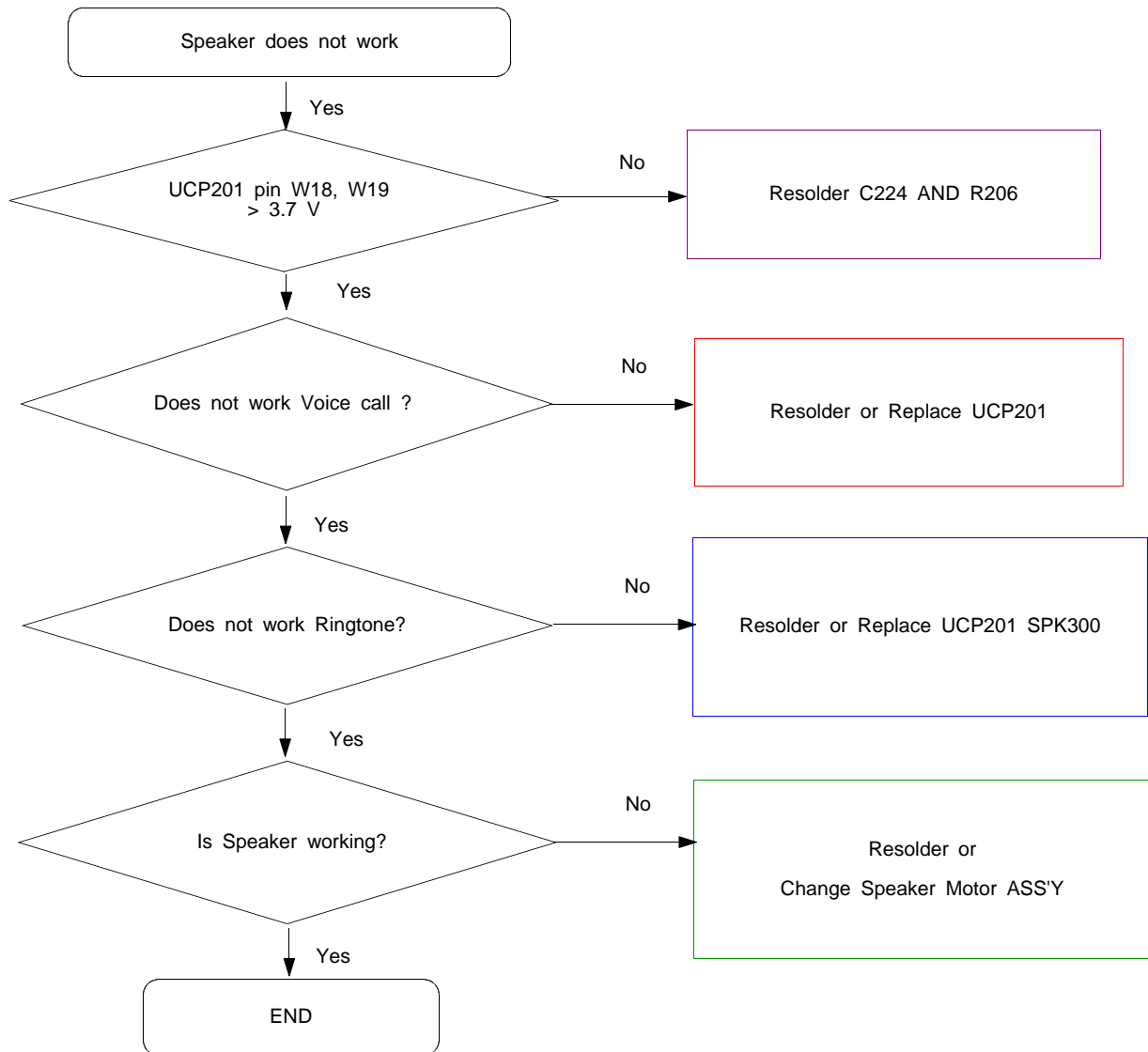


### 9-5. Microphone Part



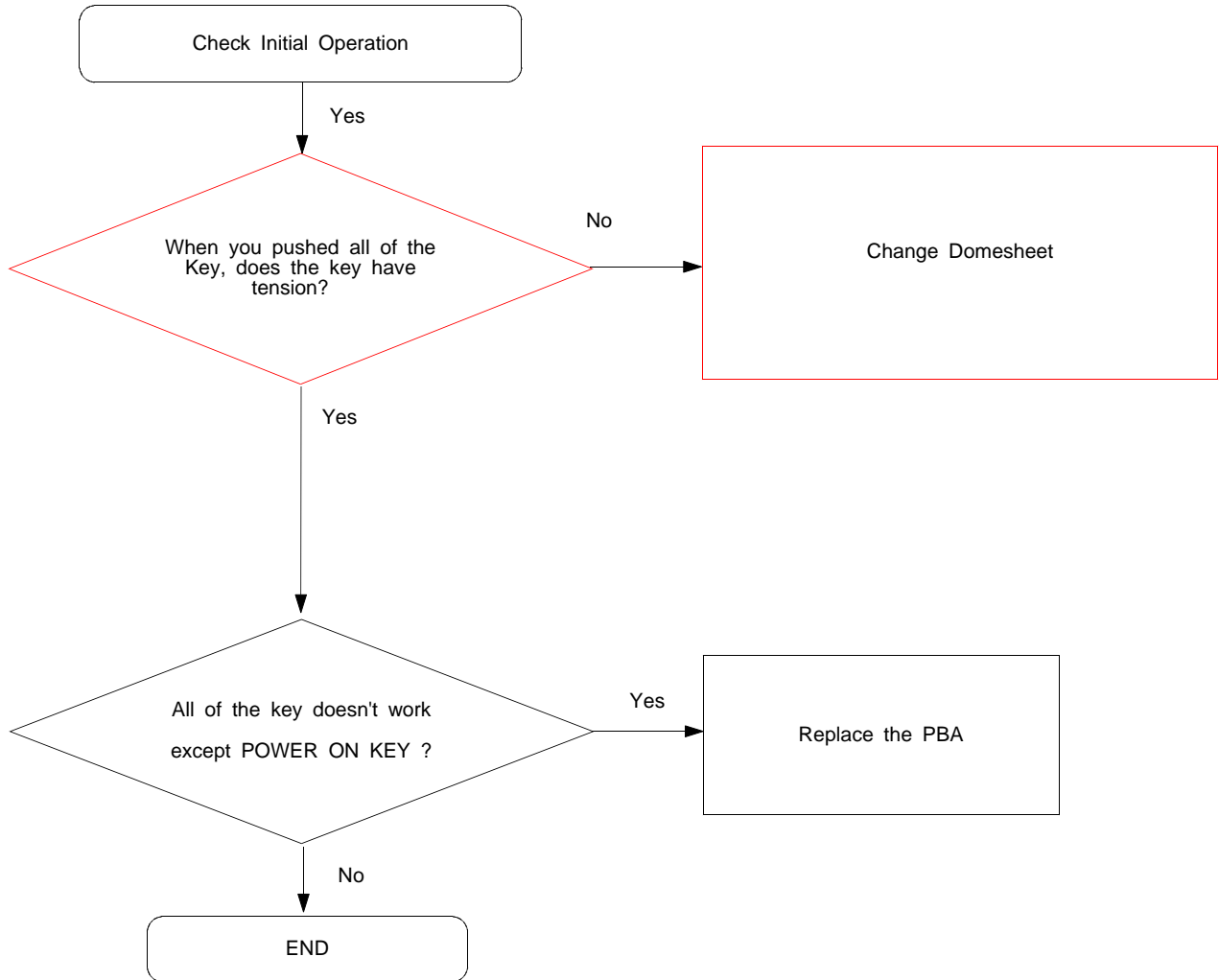


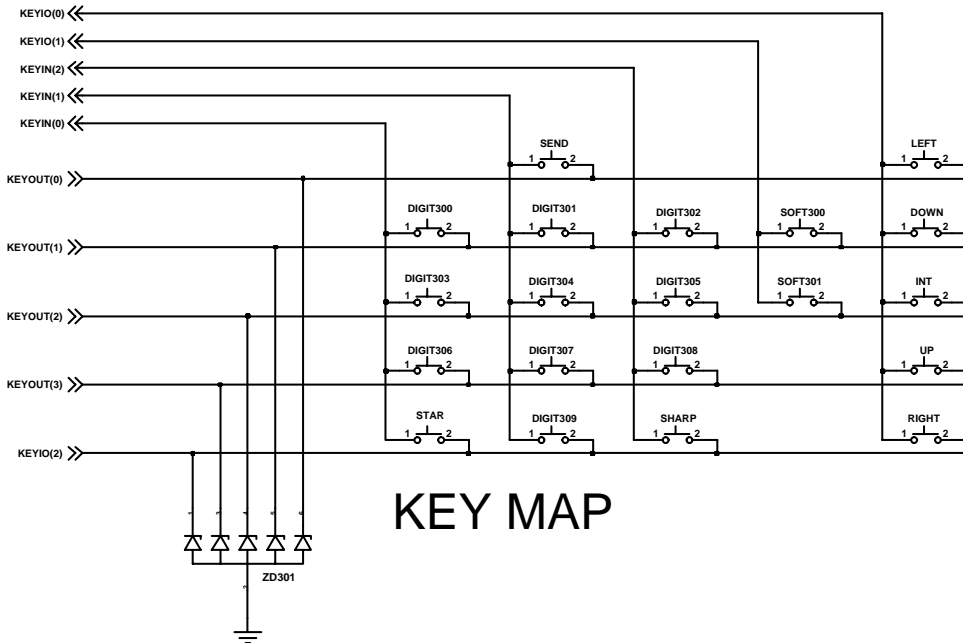
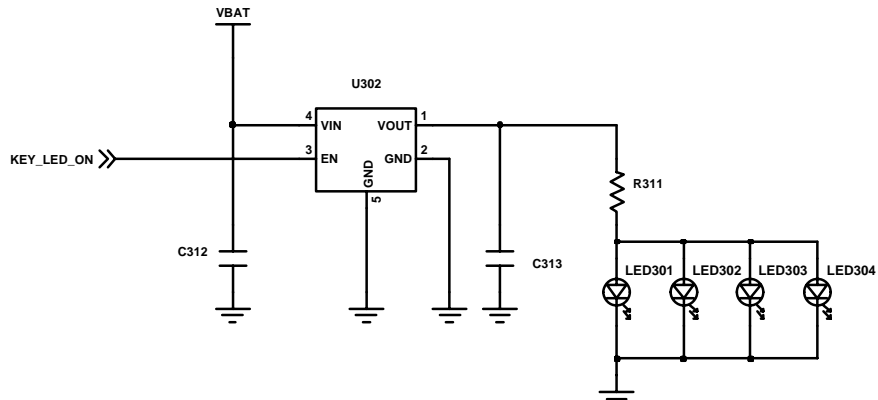
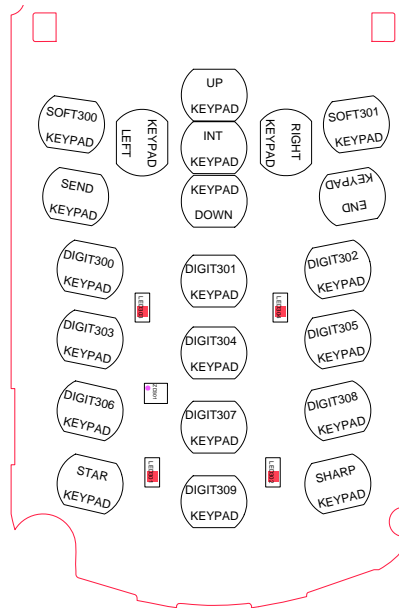
## 9-6. Speaker Part



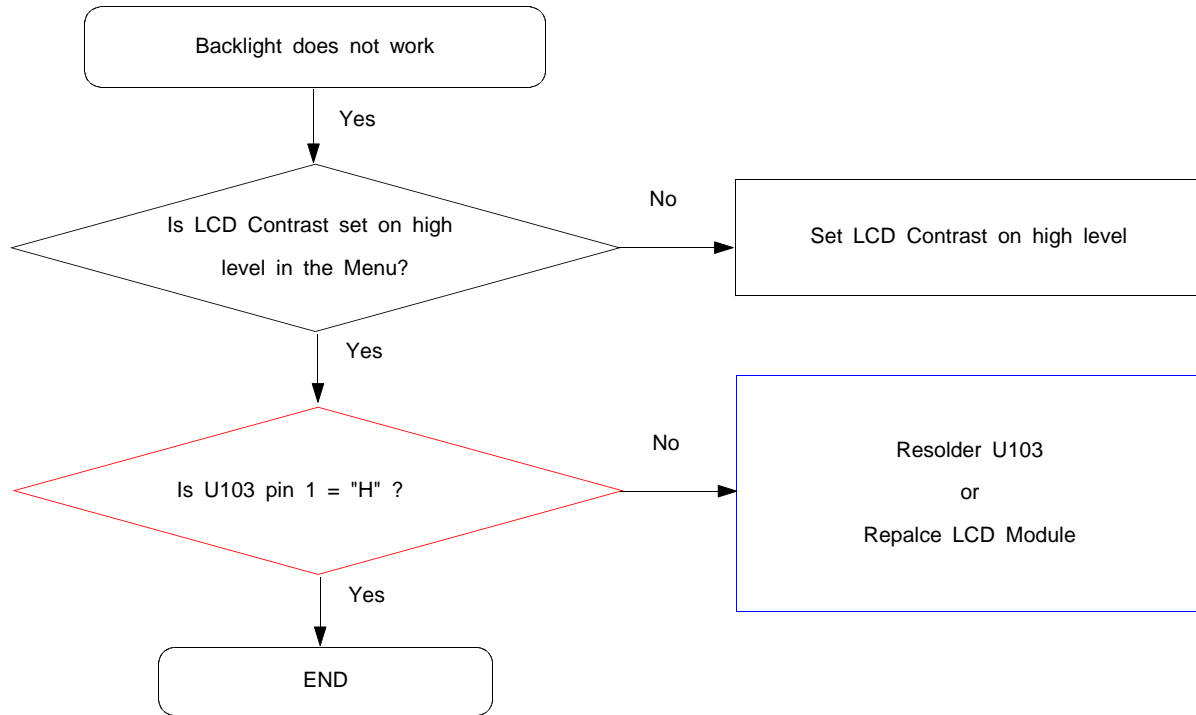


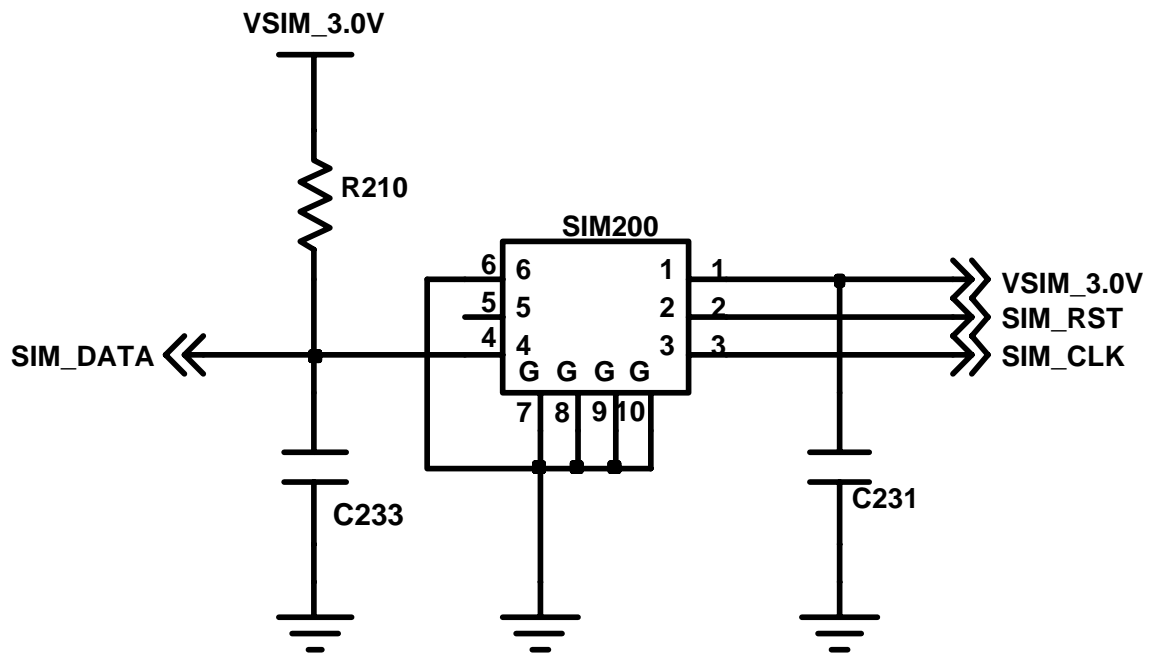
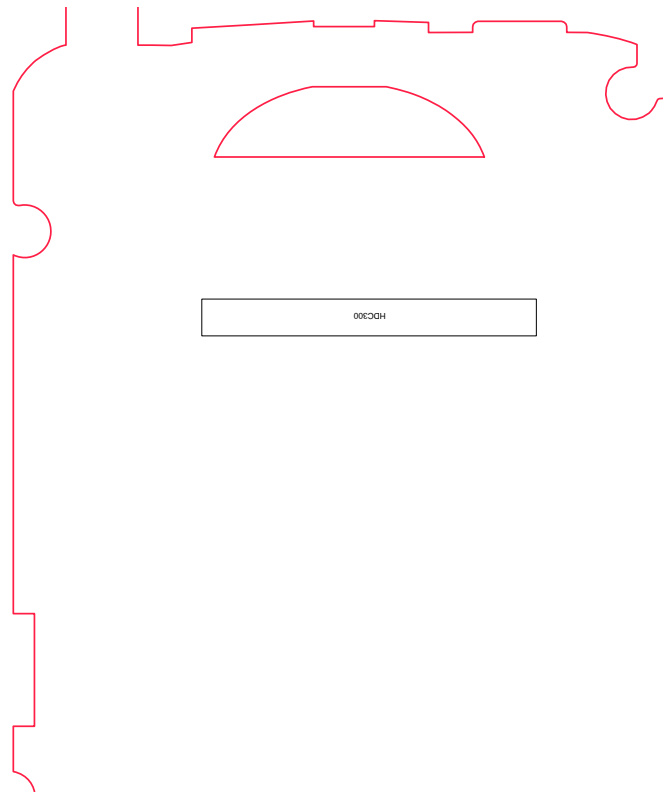
## 9-7. Key Data Input





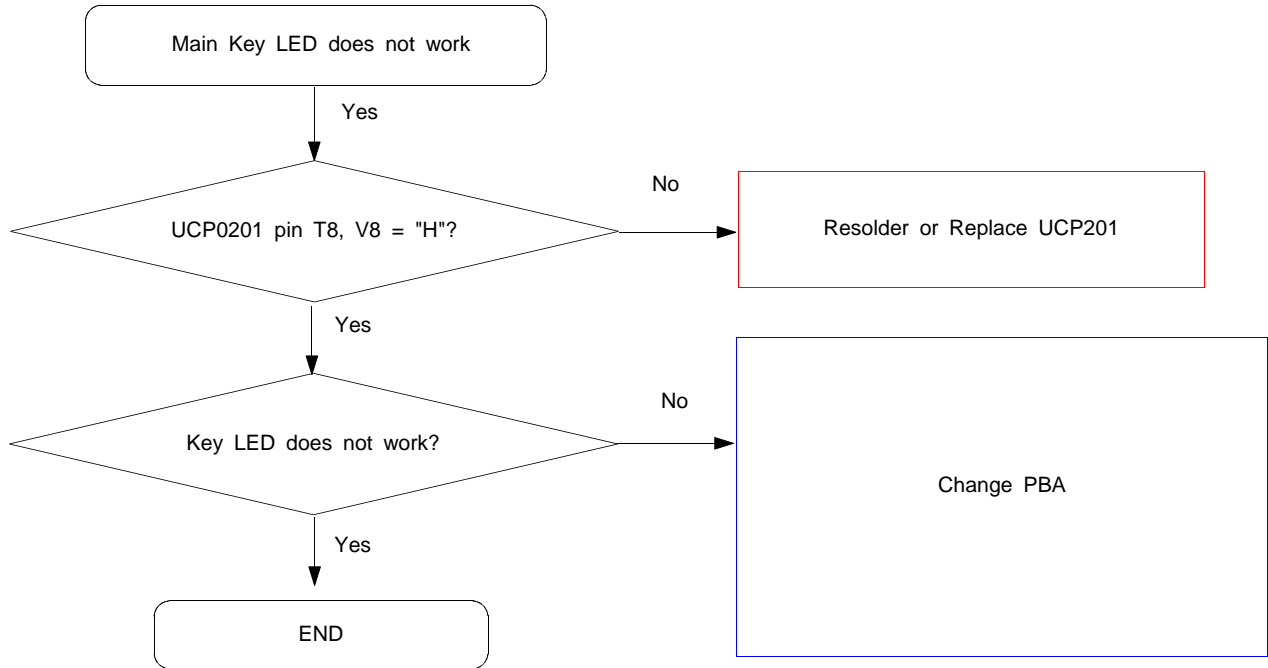
### 9-8. Back Light (for Color Main LCD)

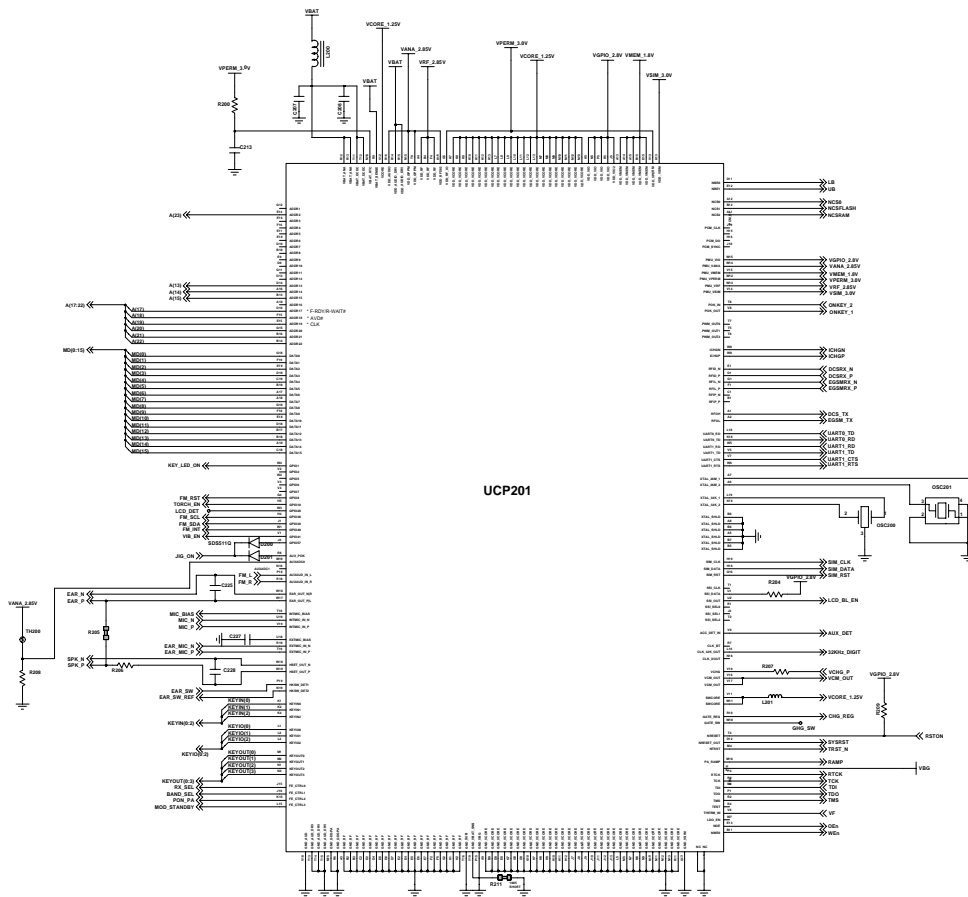
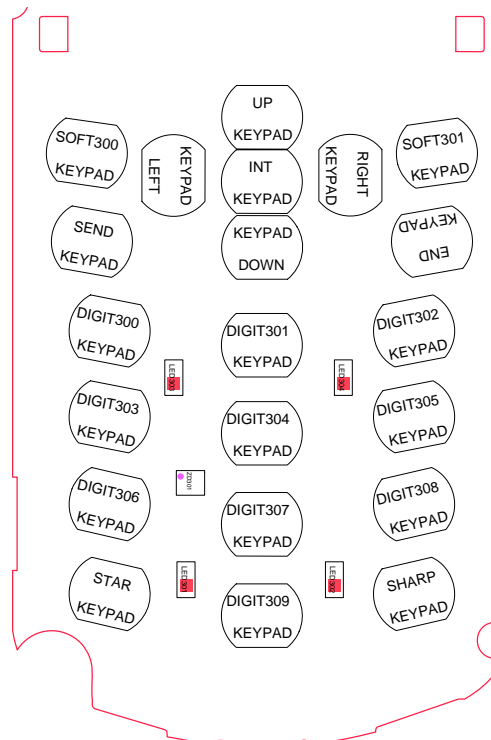




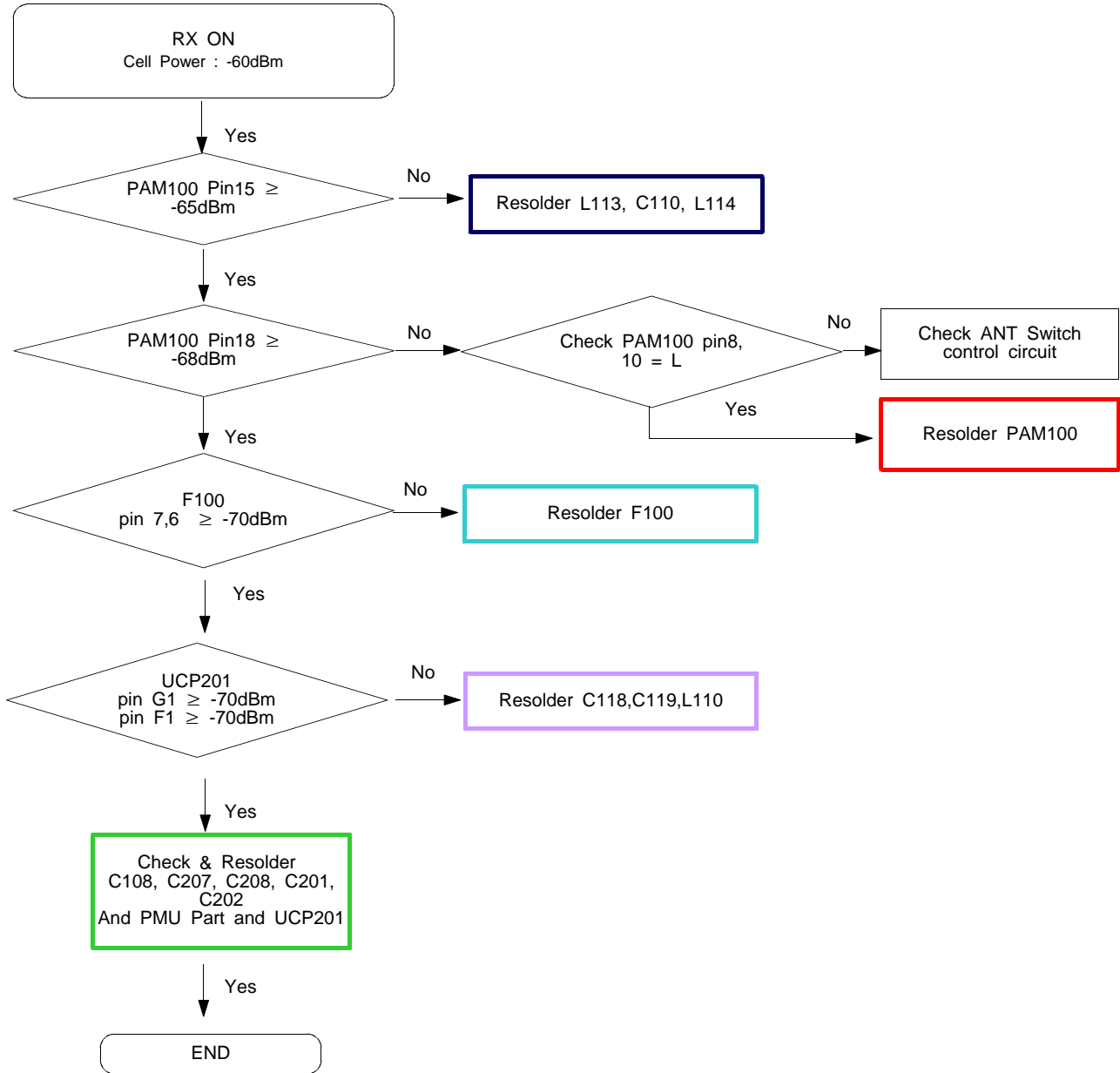


### 9-9. Key Back Light

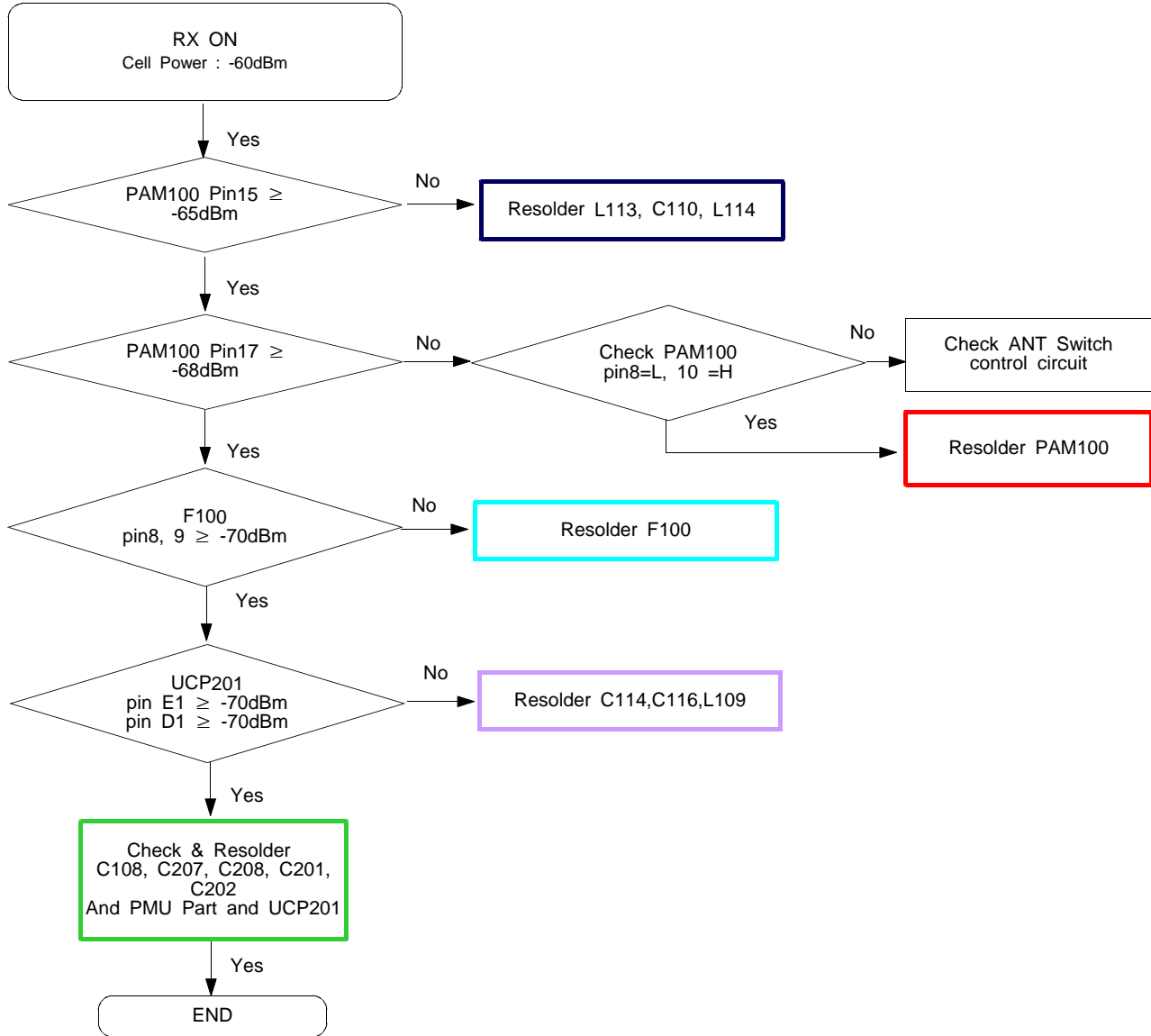




### 9-10. GSM850 Receiver



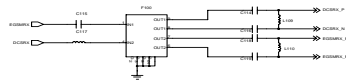
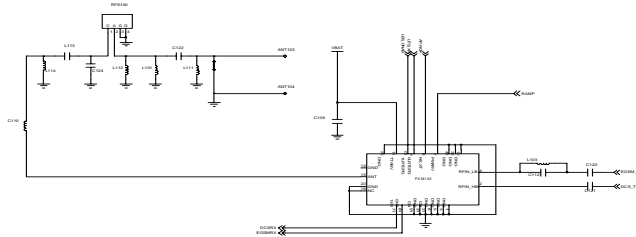
### 9-11. PCS 1900 Receiver



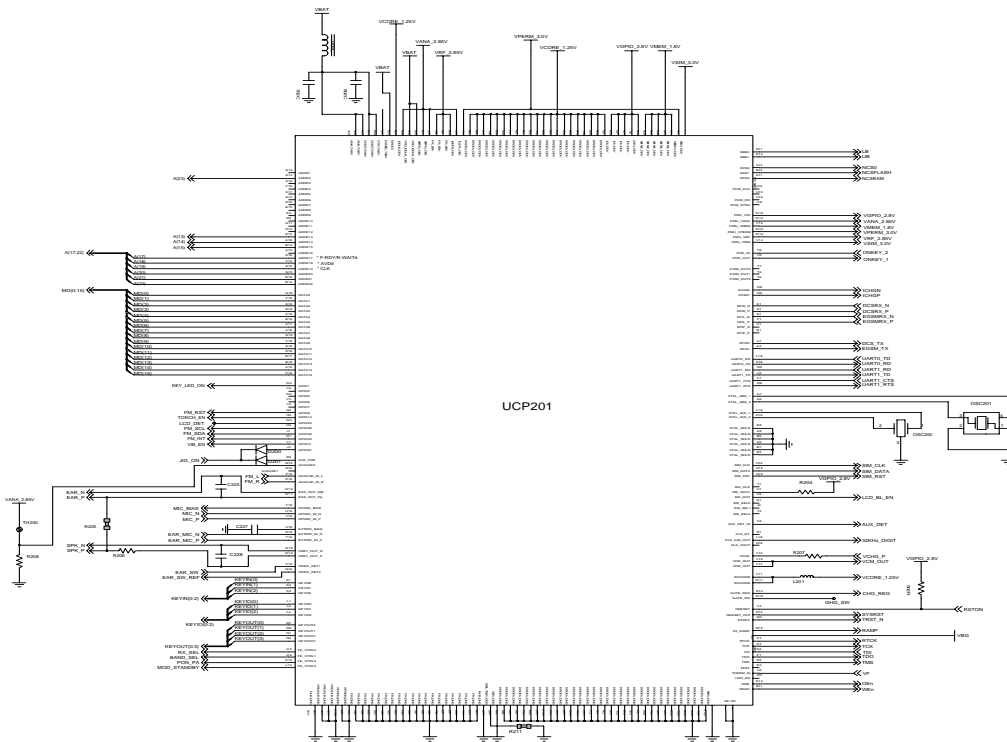
# Flow Chart of Troubleshooting

	MOD_STANBY	POW_PA	BIASD_SEL	RX_SEL
STANDBY	L	-	-	-
EGSM_RX	H	L	L	H
DCS_RX	H	L	H	H
EGSM_TX	H	H	L	-
DCS_TX	H	H	H	-

TX Module S/W Control Circuit



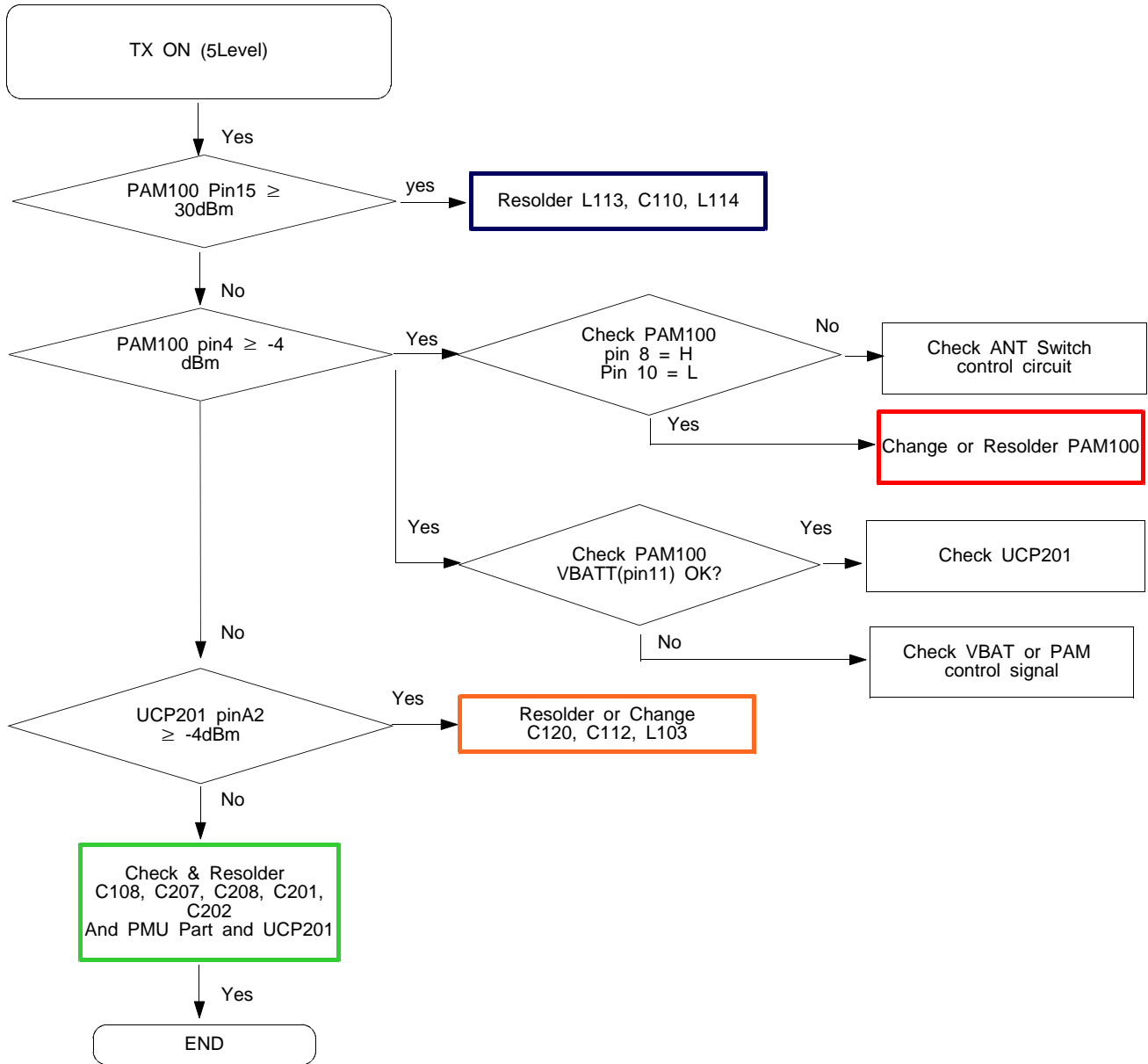
## RF Part



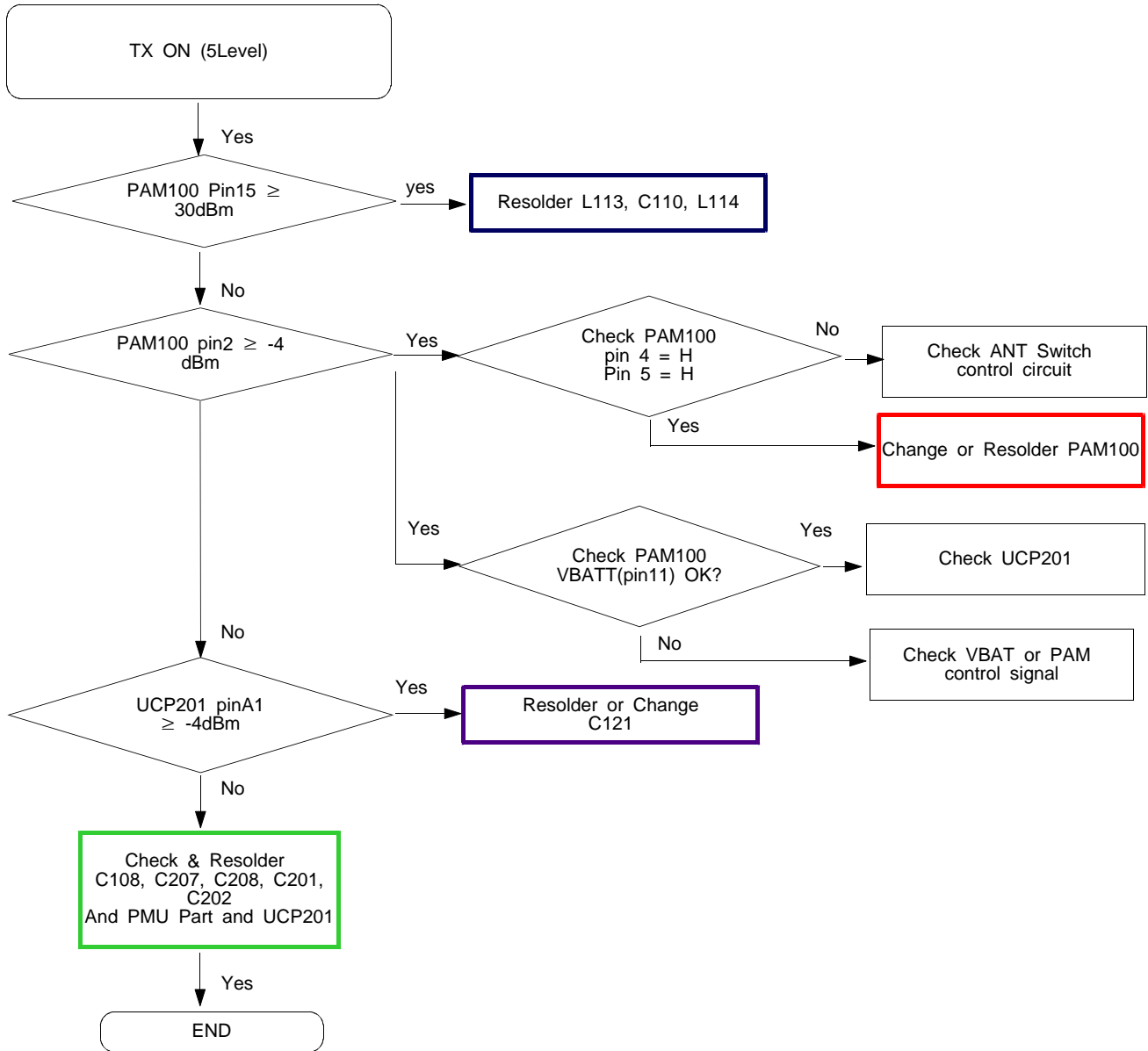
## BASEBAND



## 9-12. GSM850 Transmitter



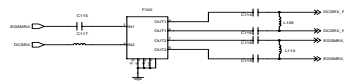
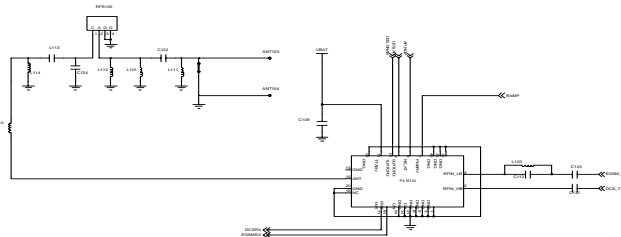
### 9-13. PCS Transmitter



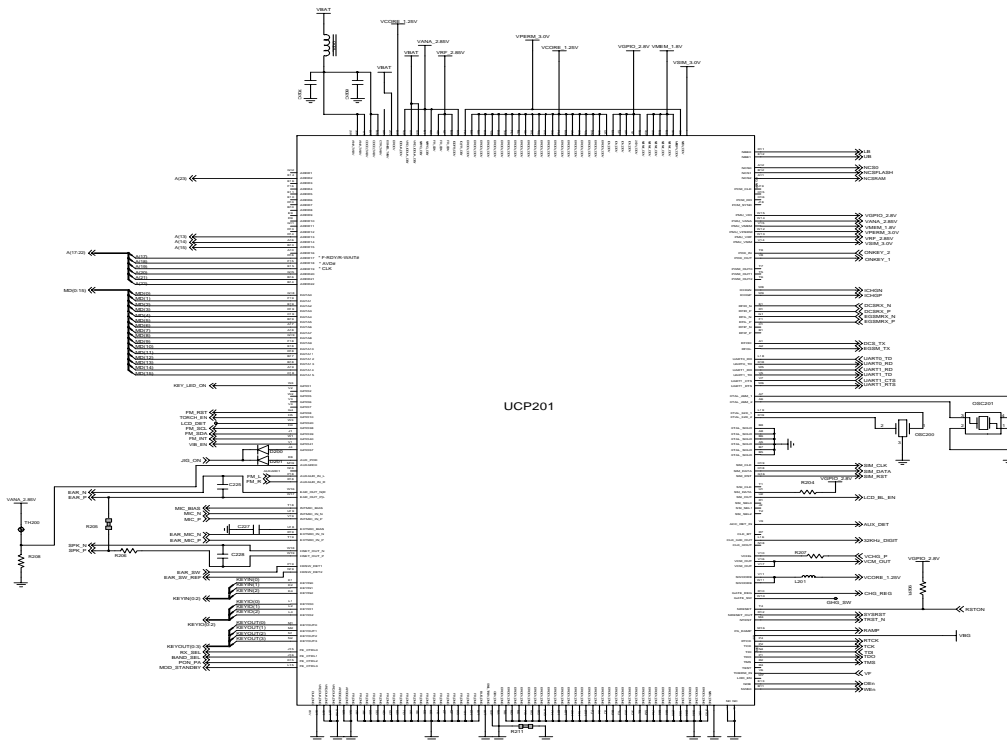


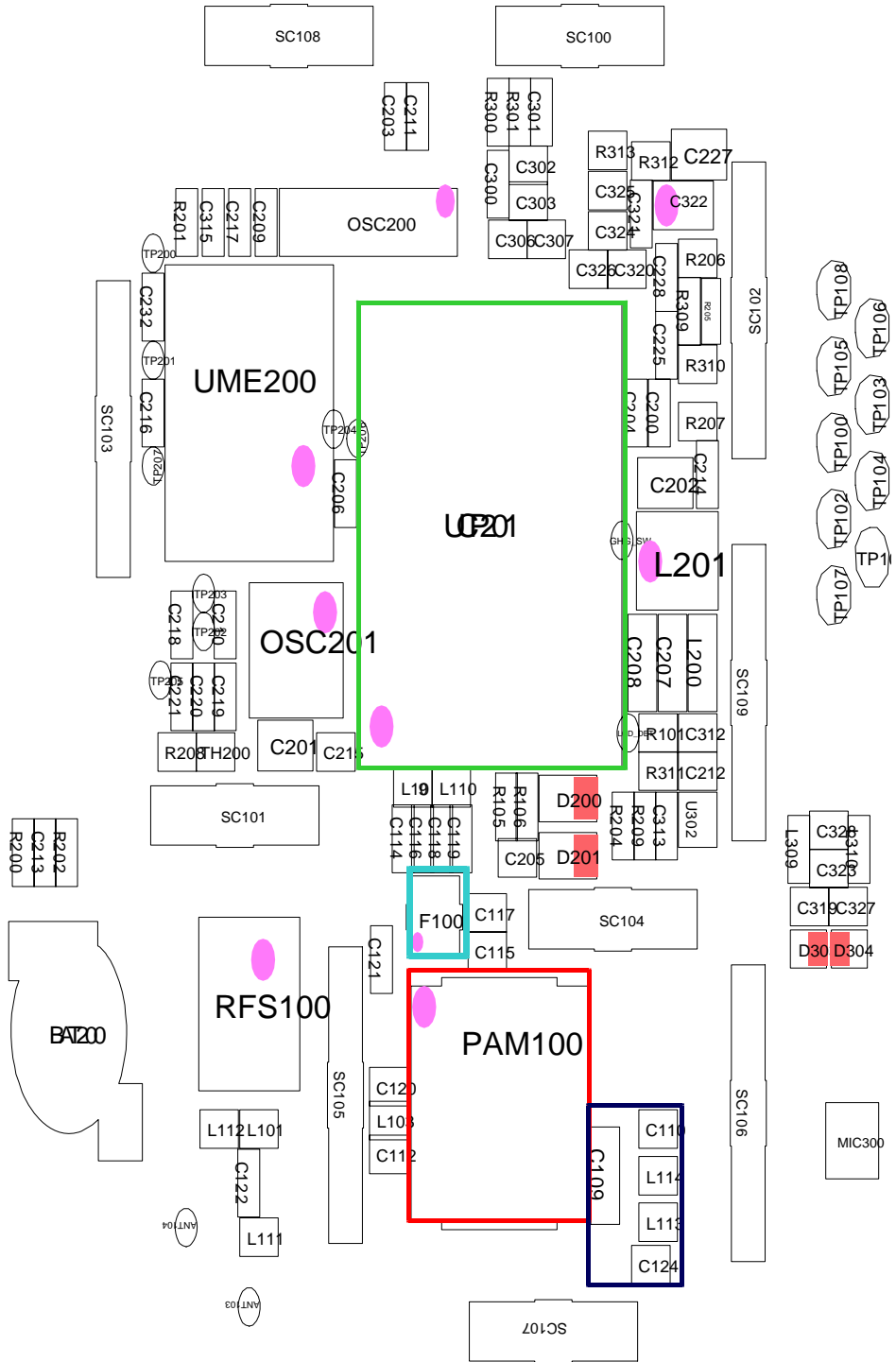
	MOD_STANDBY	FORM_PA	BAND_SEL	RX_SEL
STANDBY	L	*	*	*
EGSM_RX	H	L	L	H
DCS_RX	H	L	H	H
EGSM_TX	H	H	L	-
DCS_TX	H	H	H	-

TX Module S/W Control Circuit

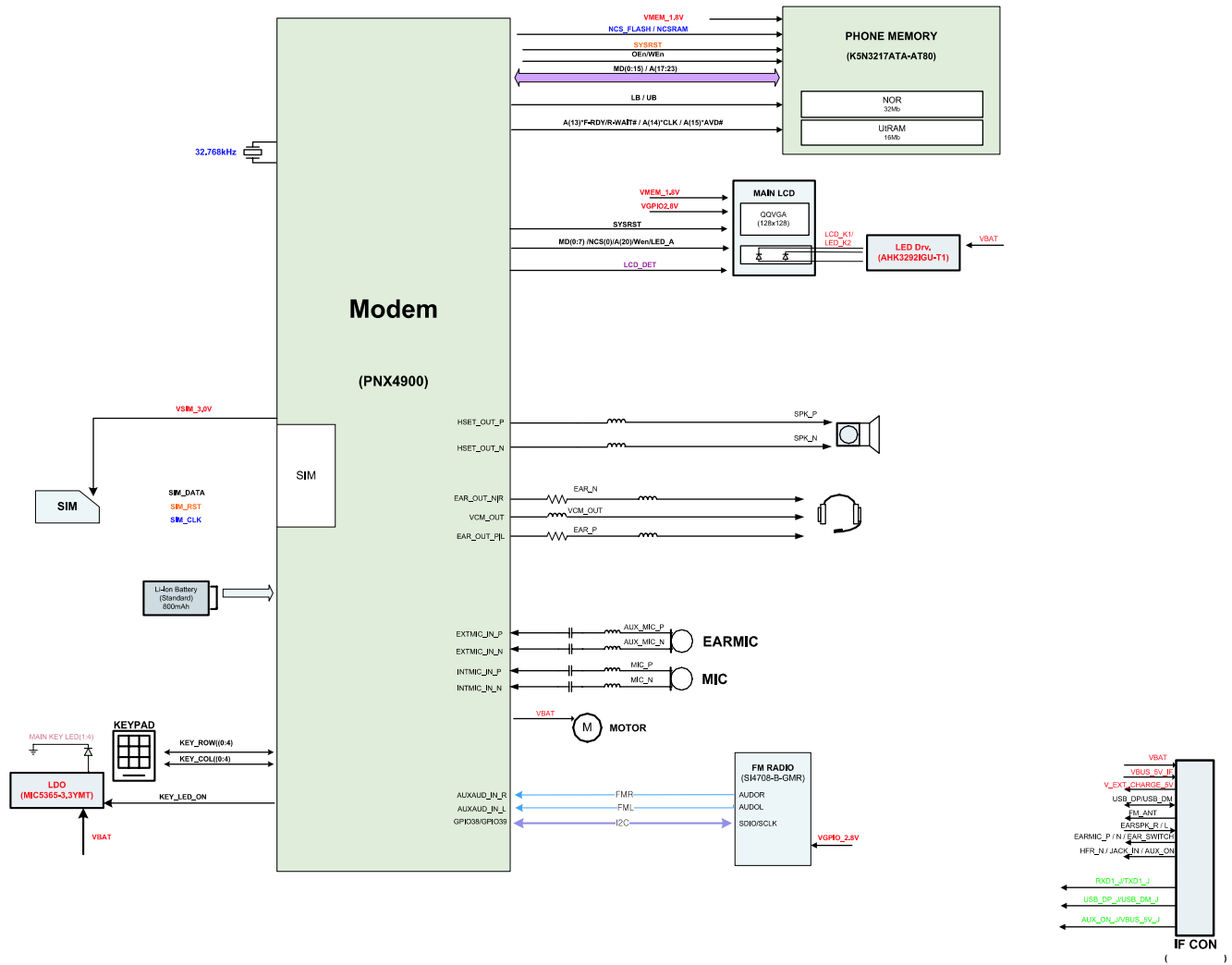


RF Part



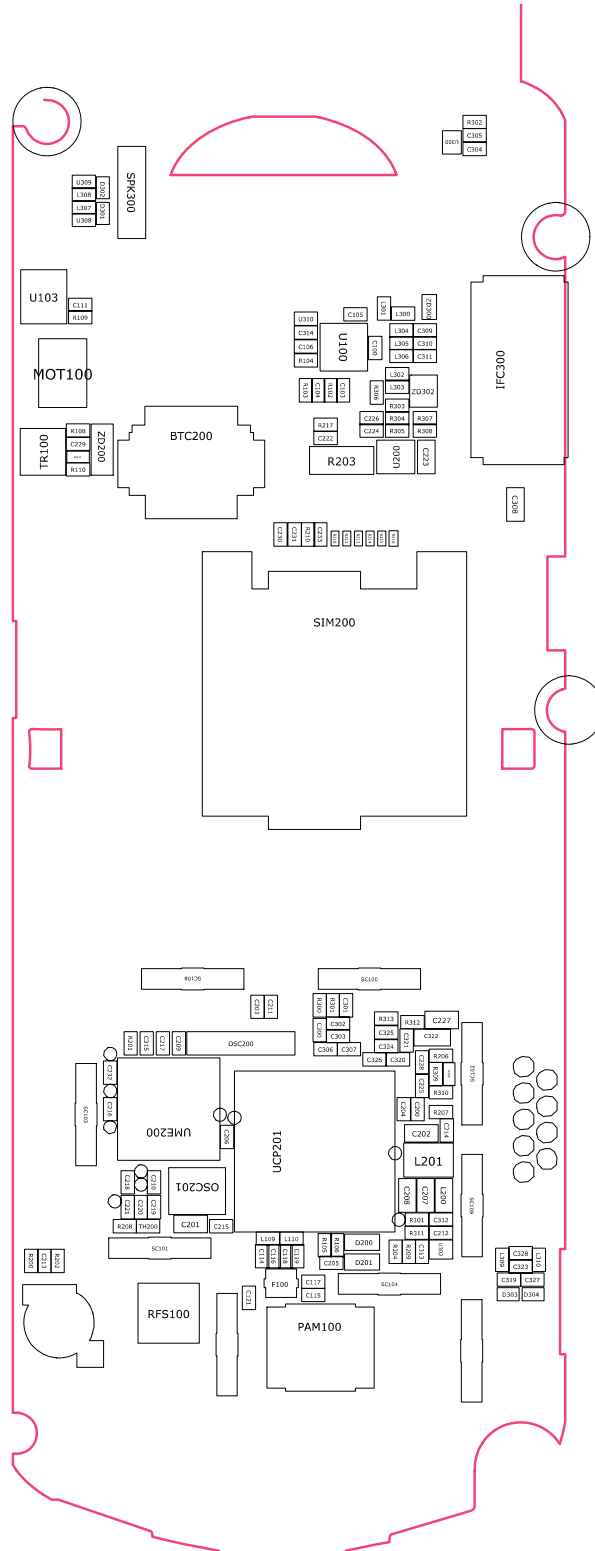


# 7. Block Diagrams



# 8. PCB Diagrams

## 8-1. Main Top



## 8-2. Main Bottom

