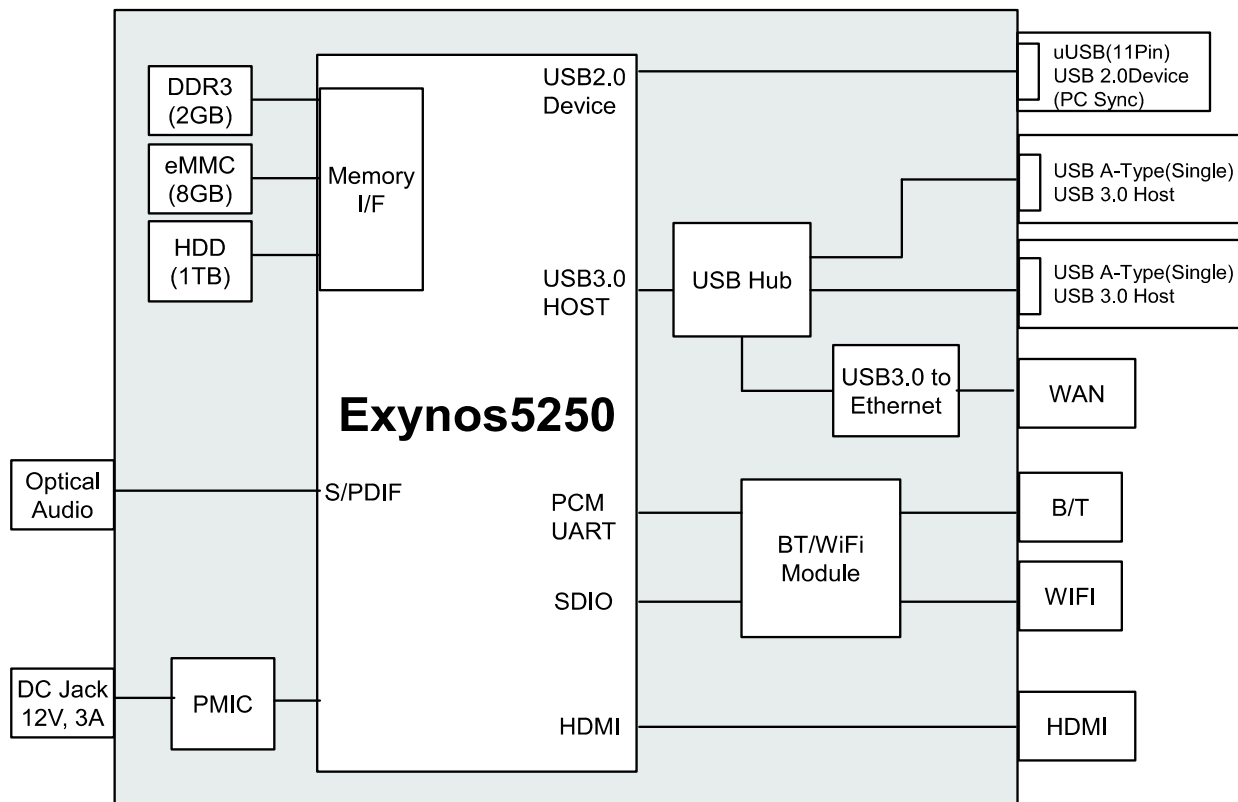


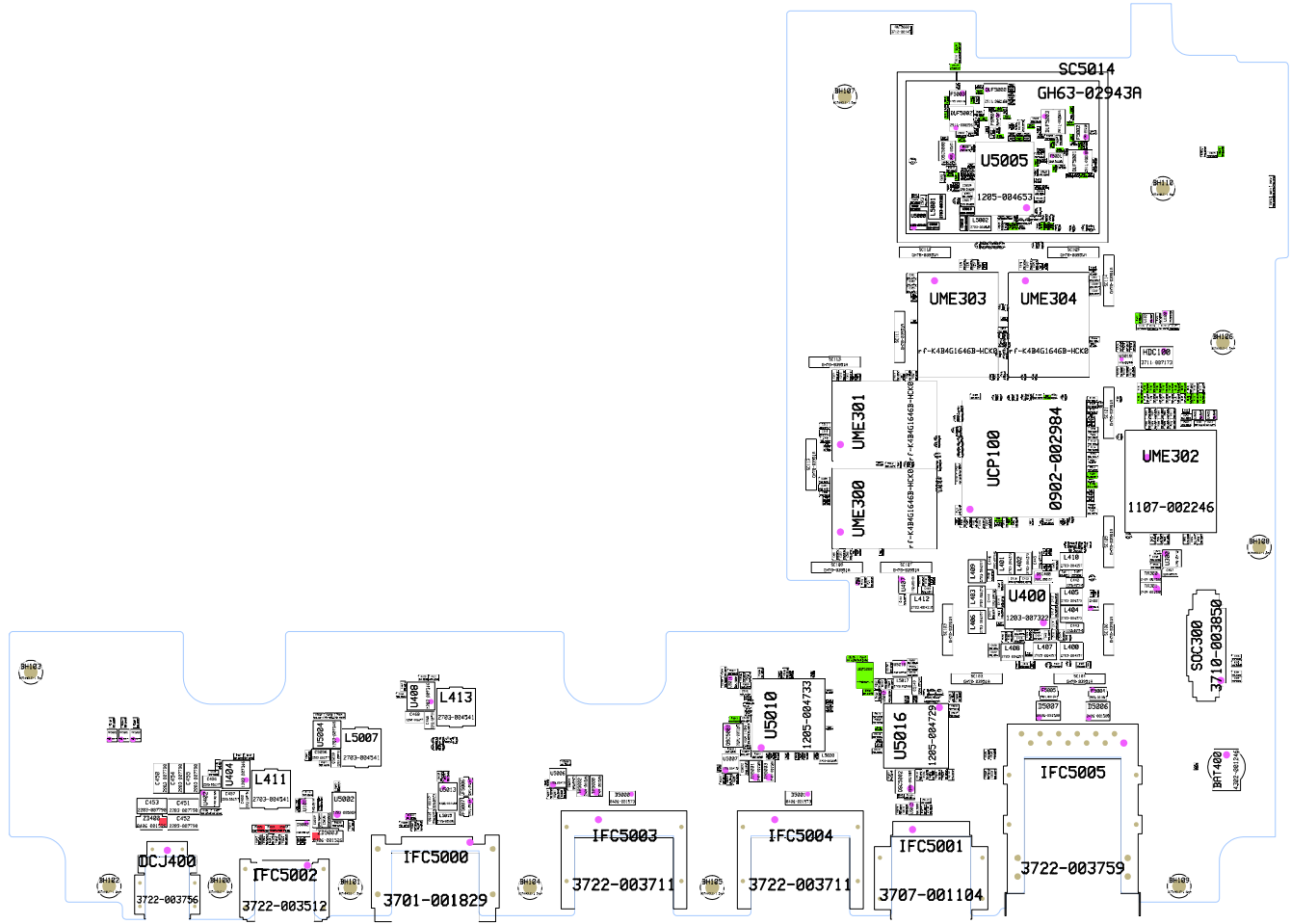
8. Level 3 Repair

8-1. Block Diagram

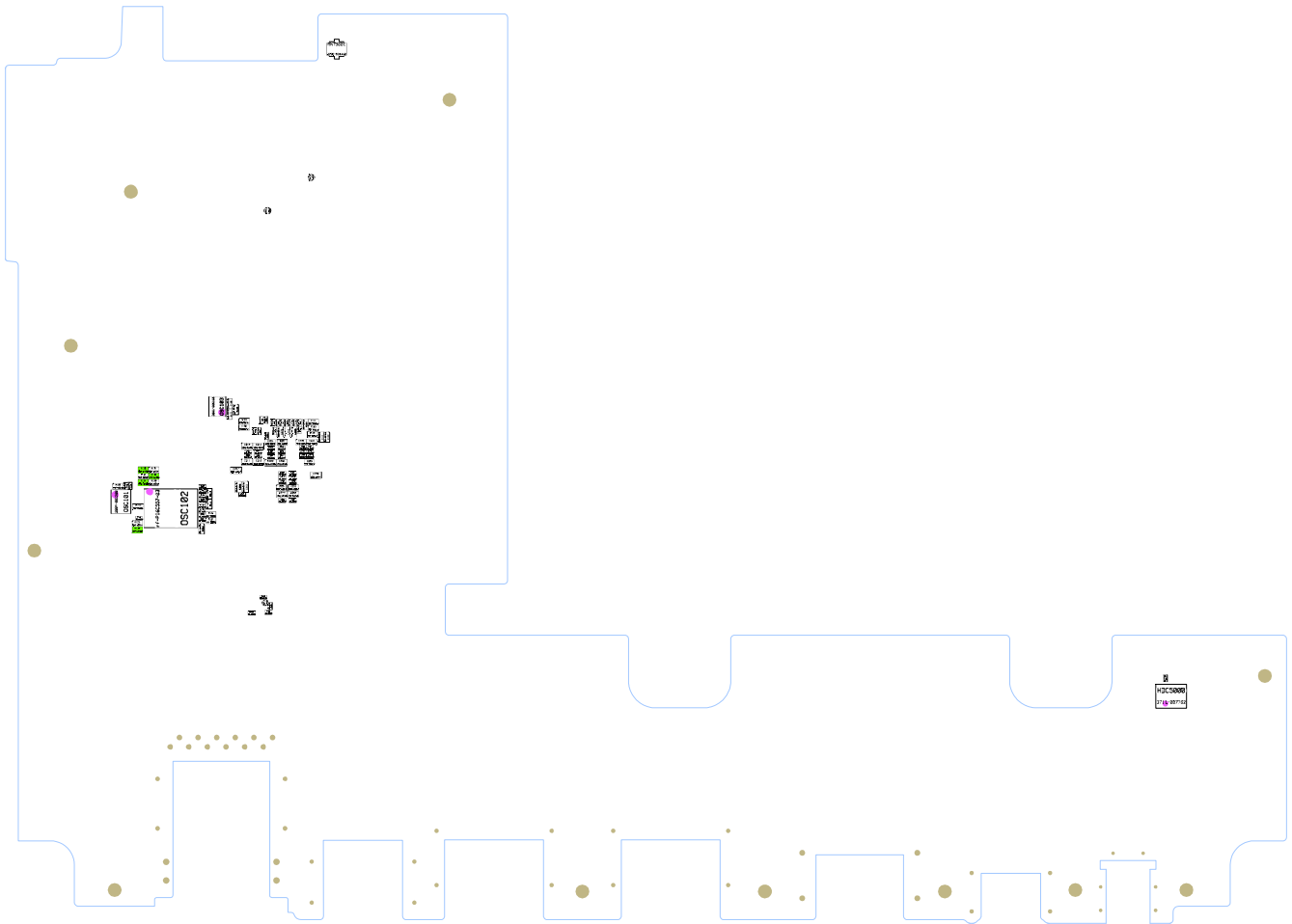


8-2. PCB Diagrams

8-2-1. Top

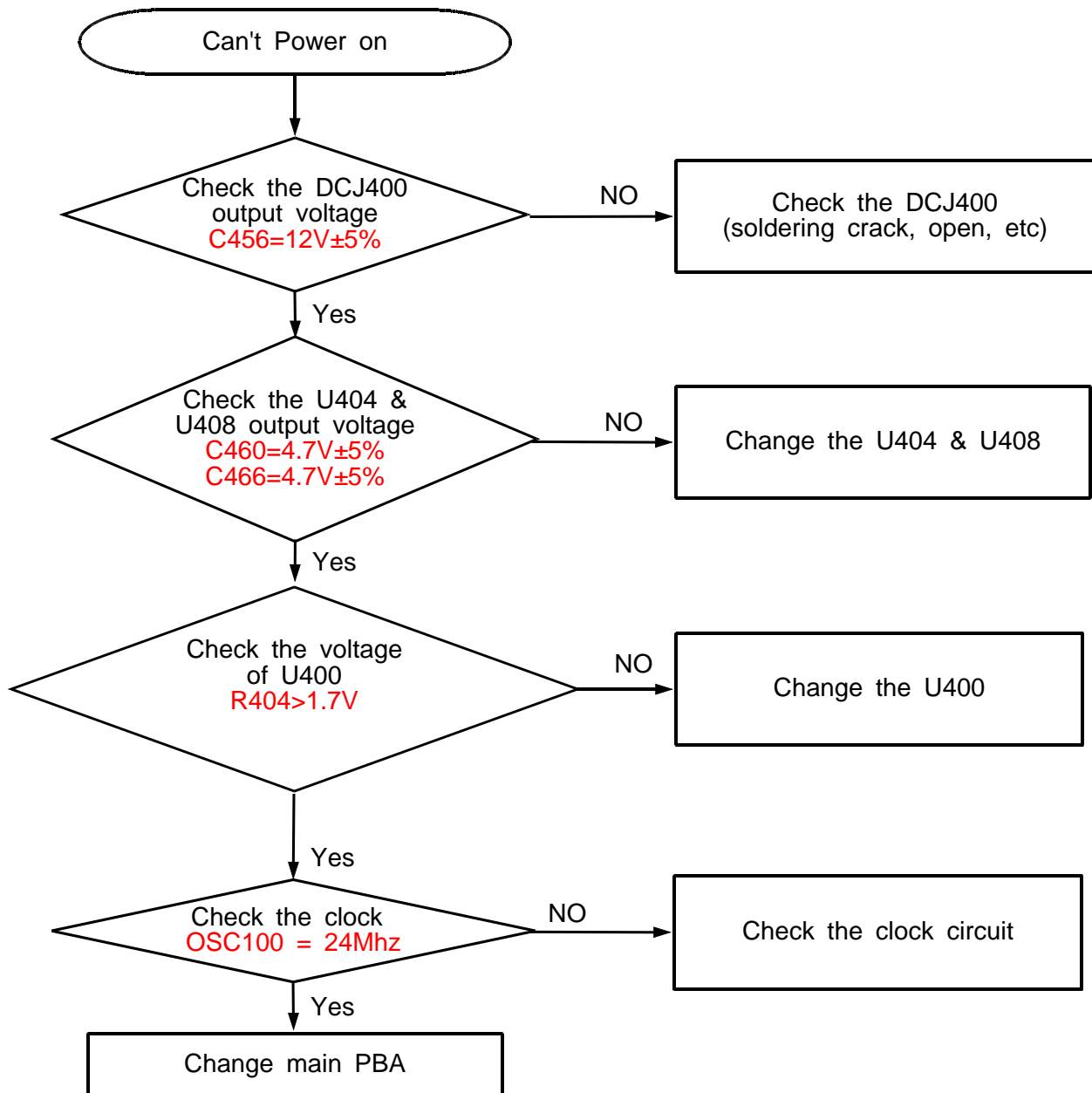


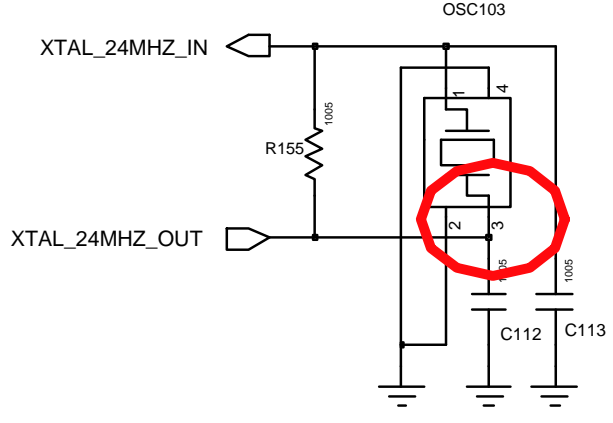
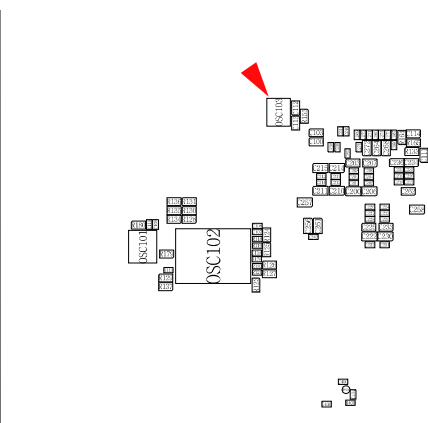
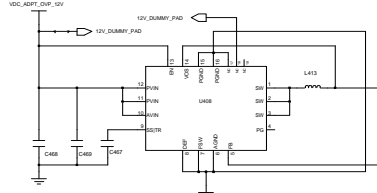
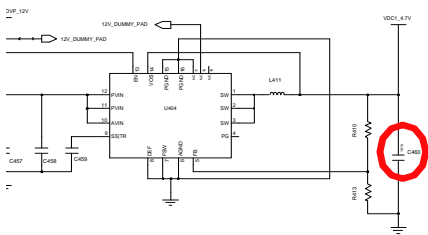
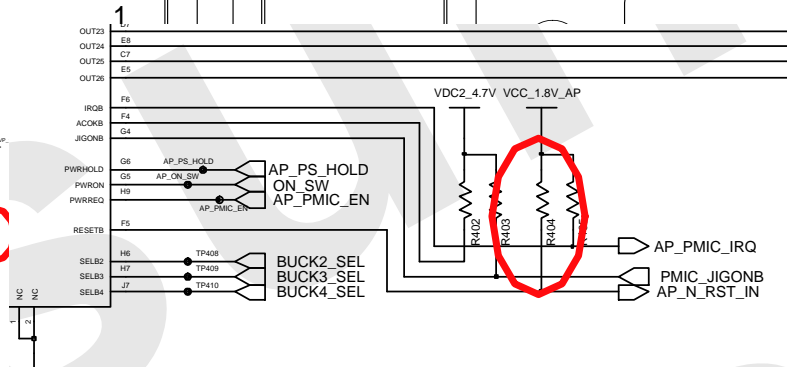
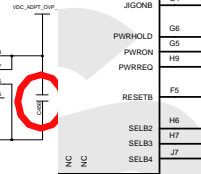
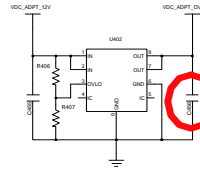
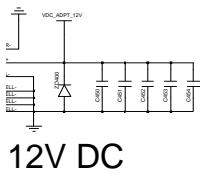
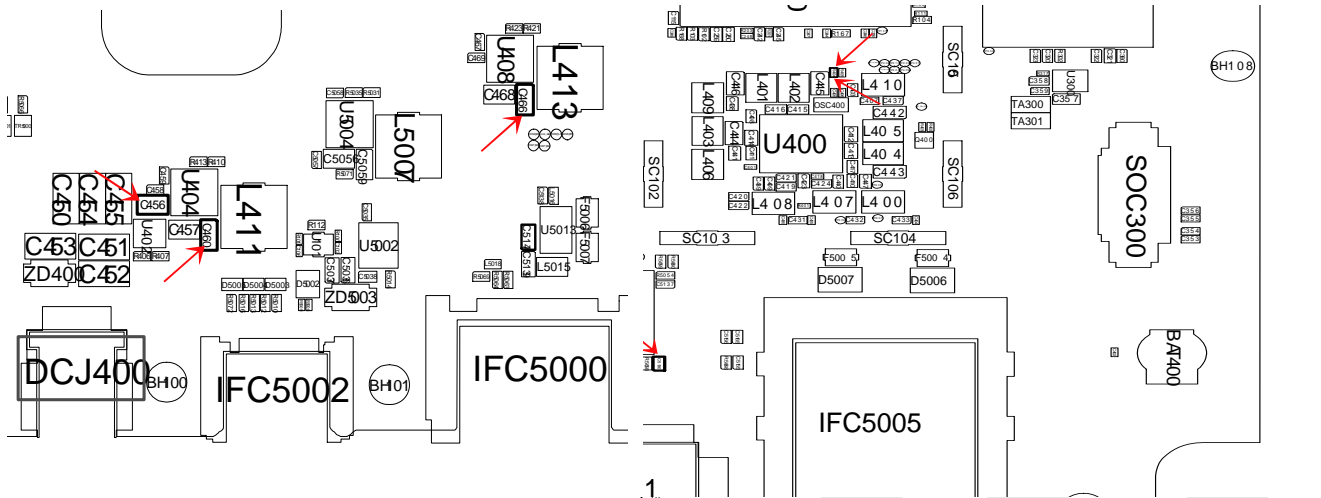
8-2-1. Bottom



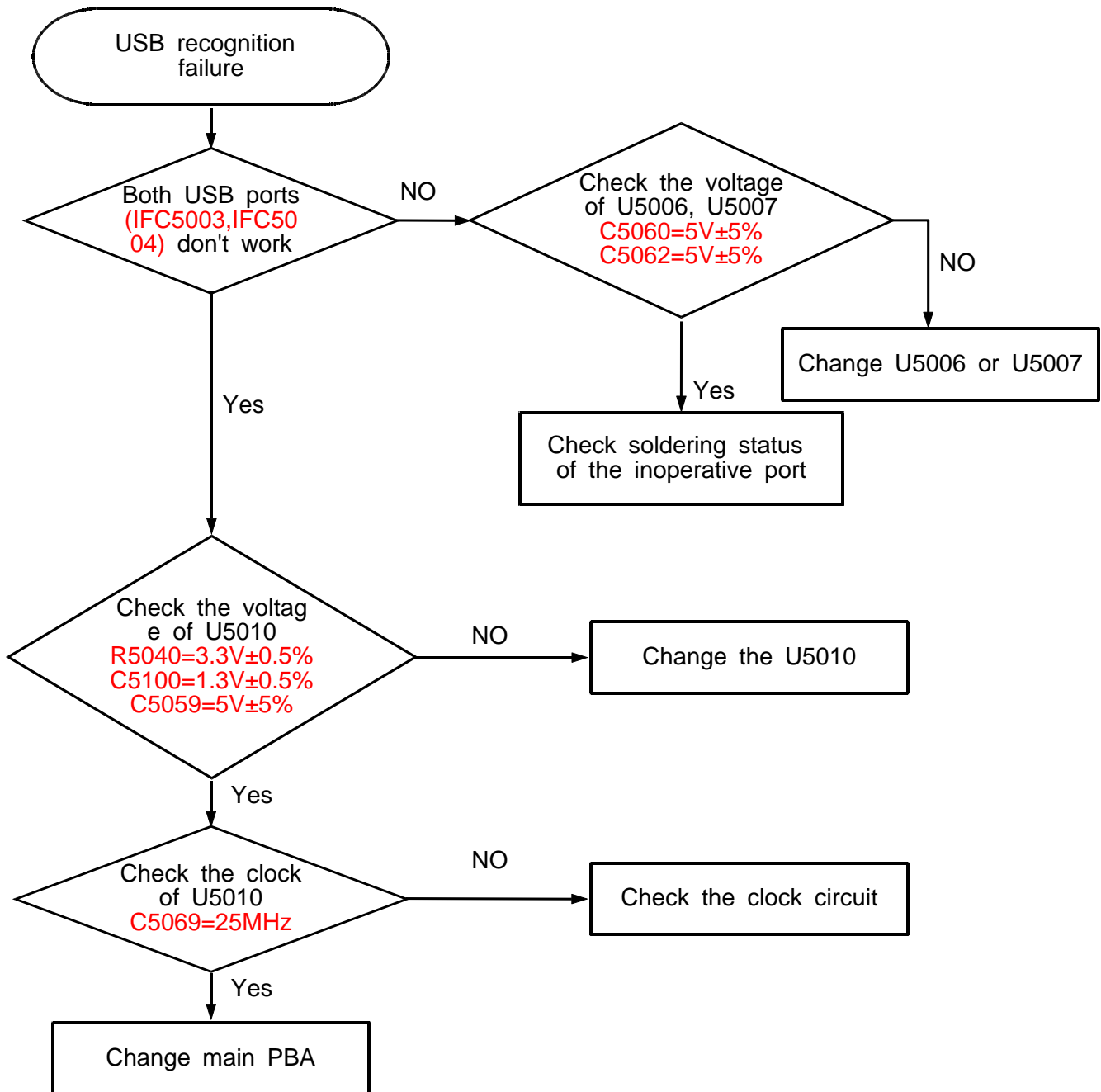
8-3. LOGIC

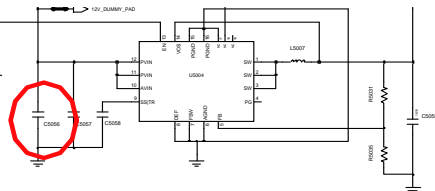
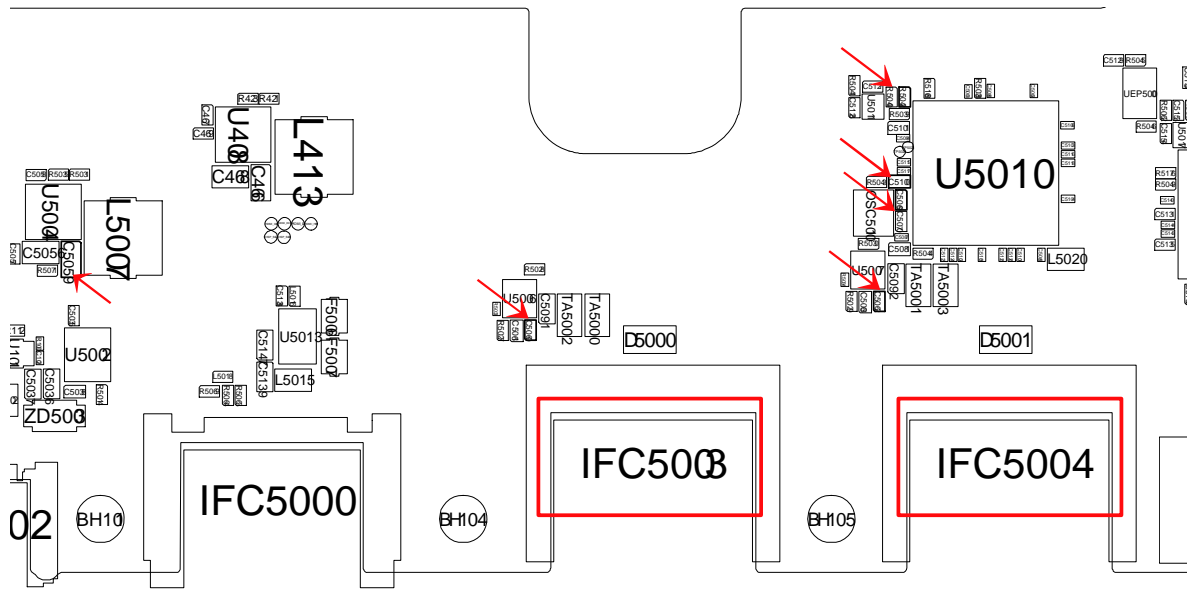
8-3-1. Power On



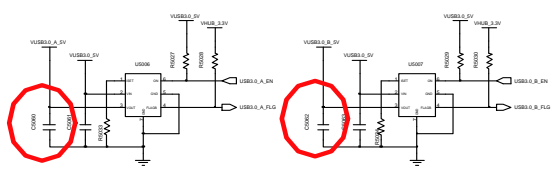


8-3-2. USB recognition

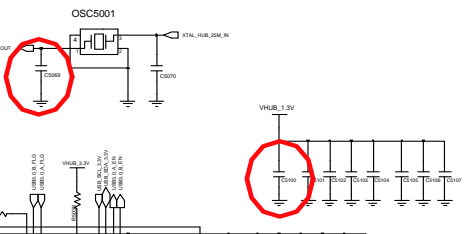




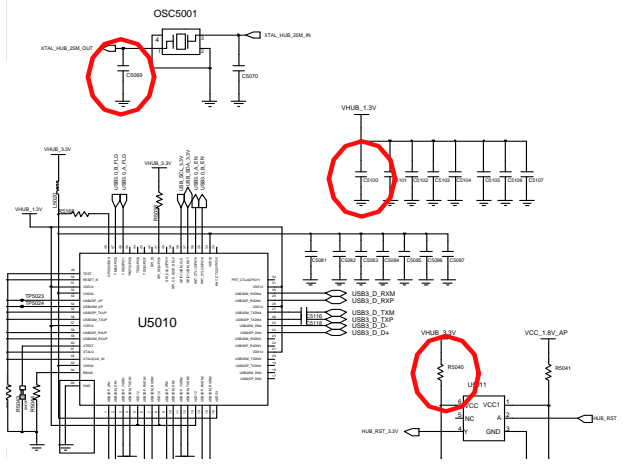
TA -> 5V Buck (USB3.0 HOST)



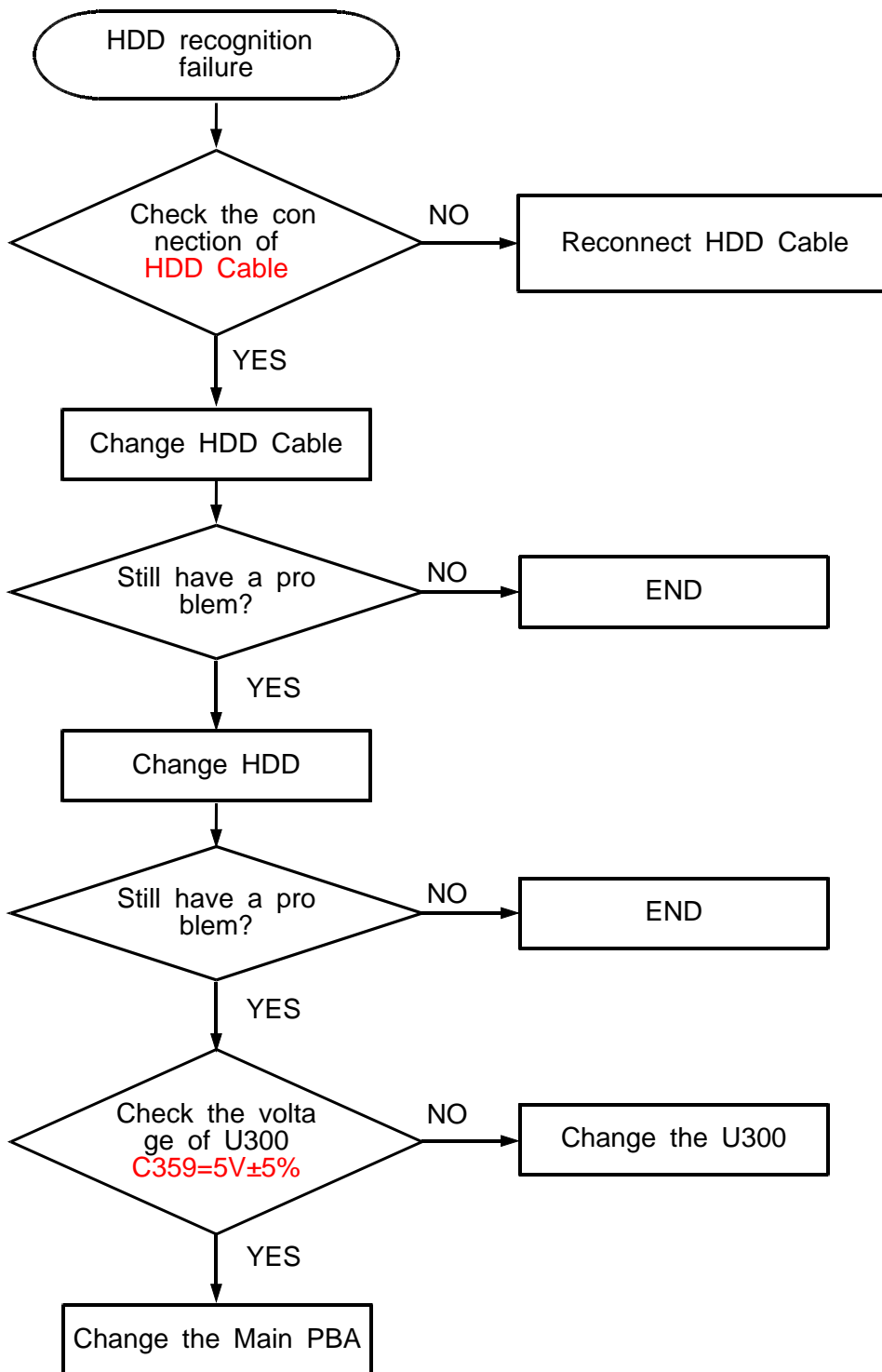
<USB3.0, 1500mA Limit>

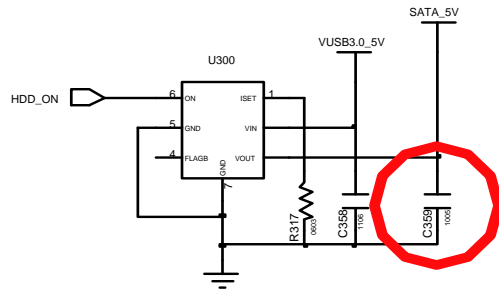
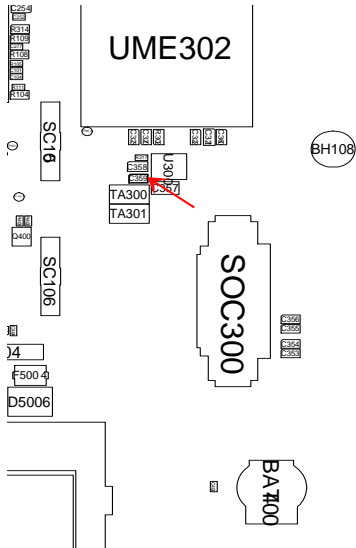


<USB3.0 A-Type Single, 2PORT>

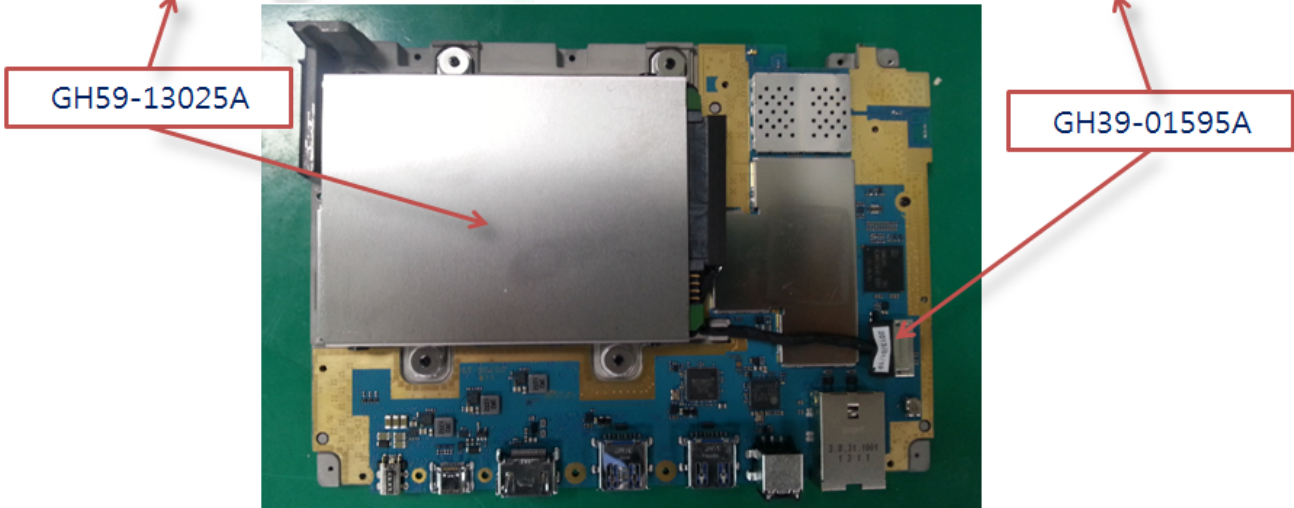
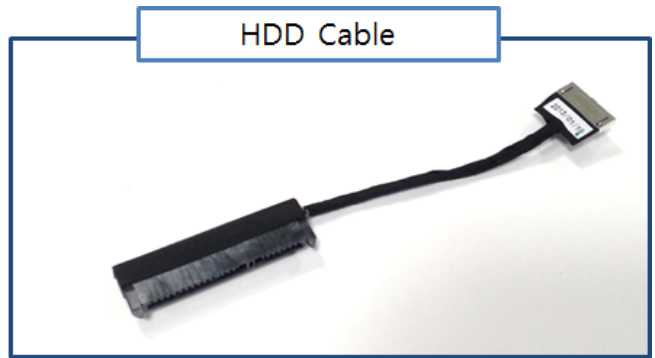


8-3-3. HDD recognition

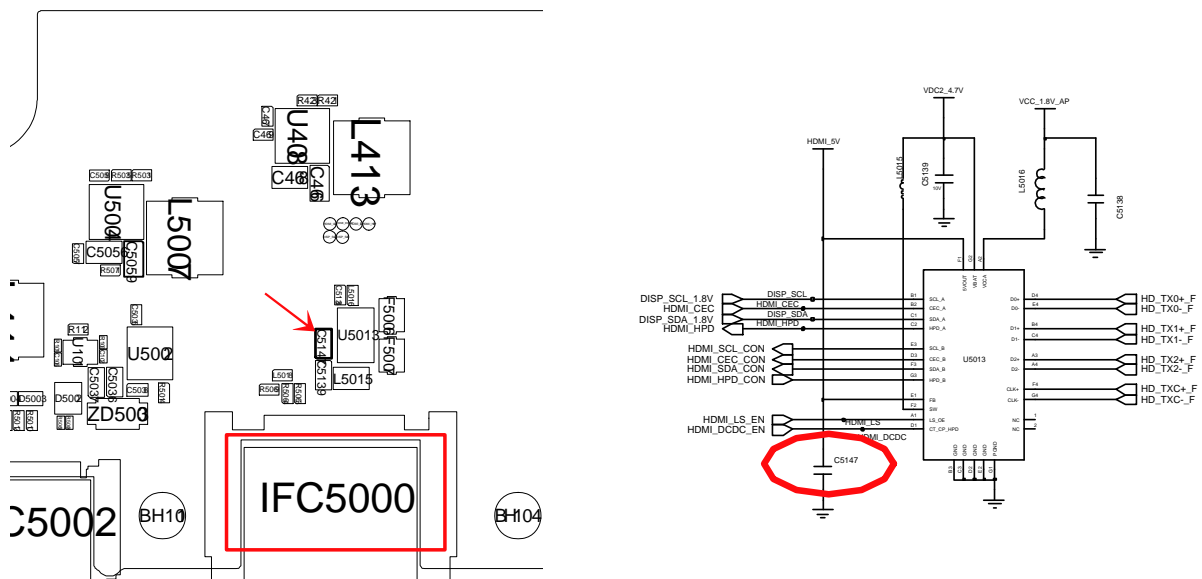
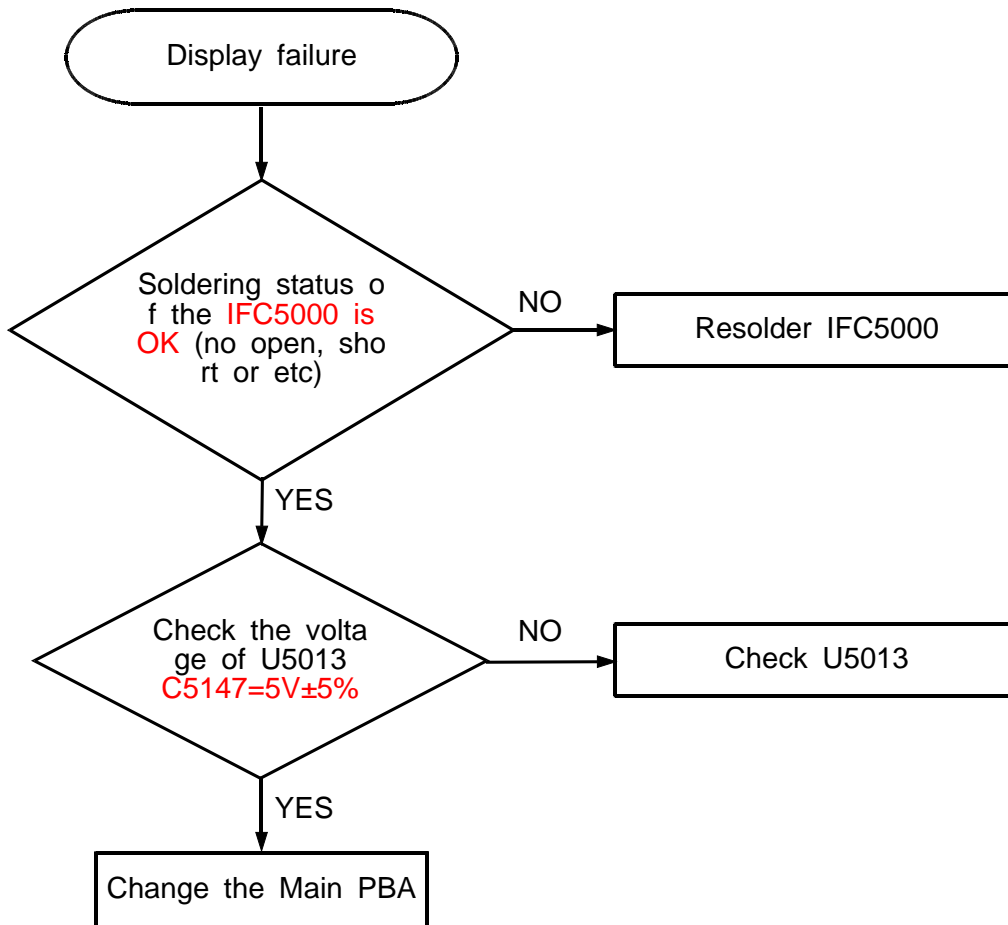




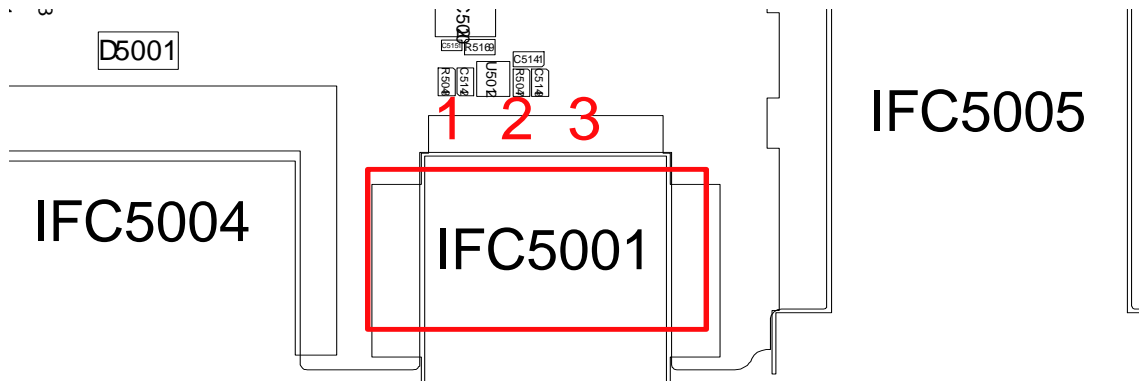
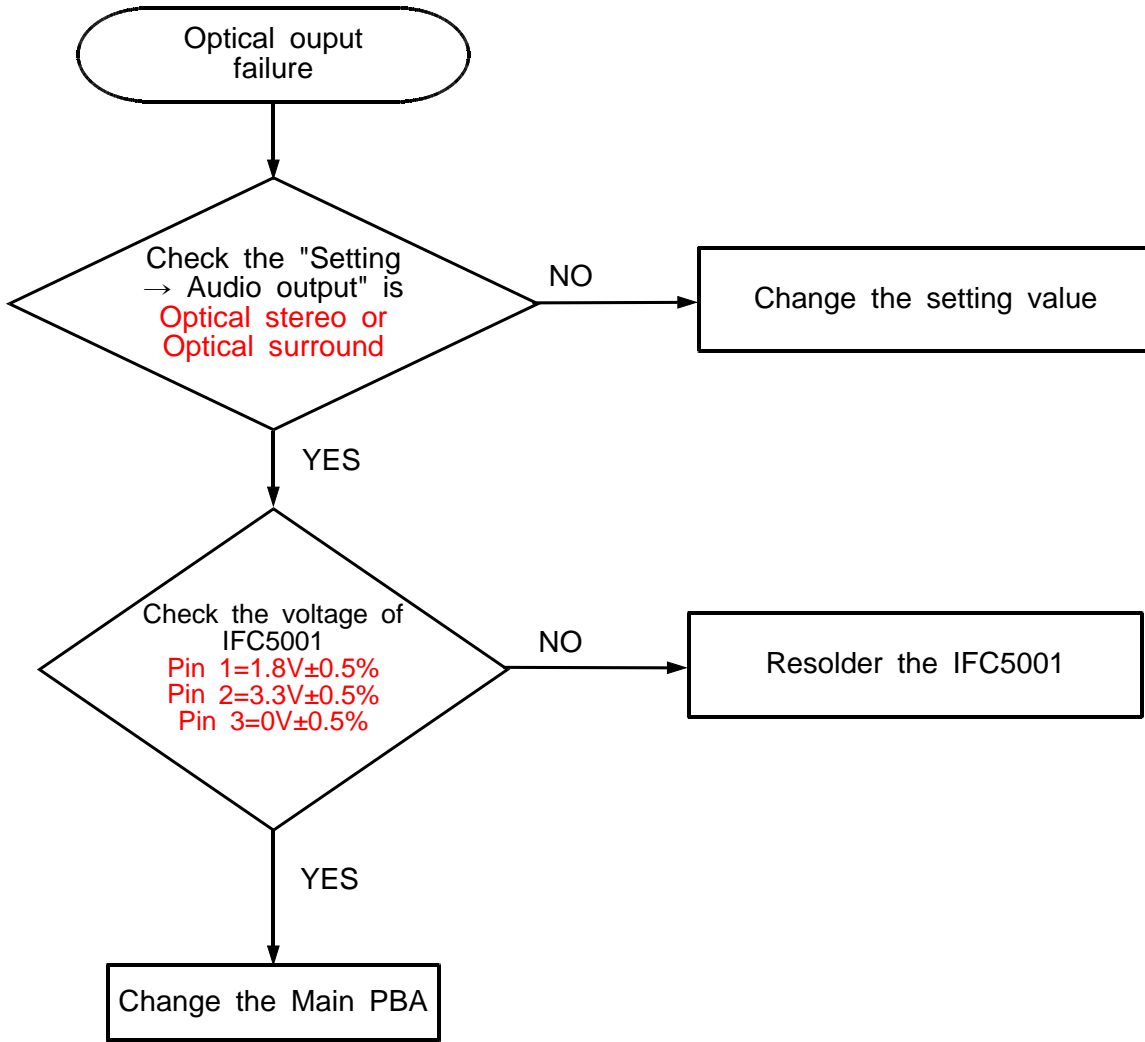
<SATA, 1500mA Limit>



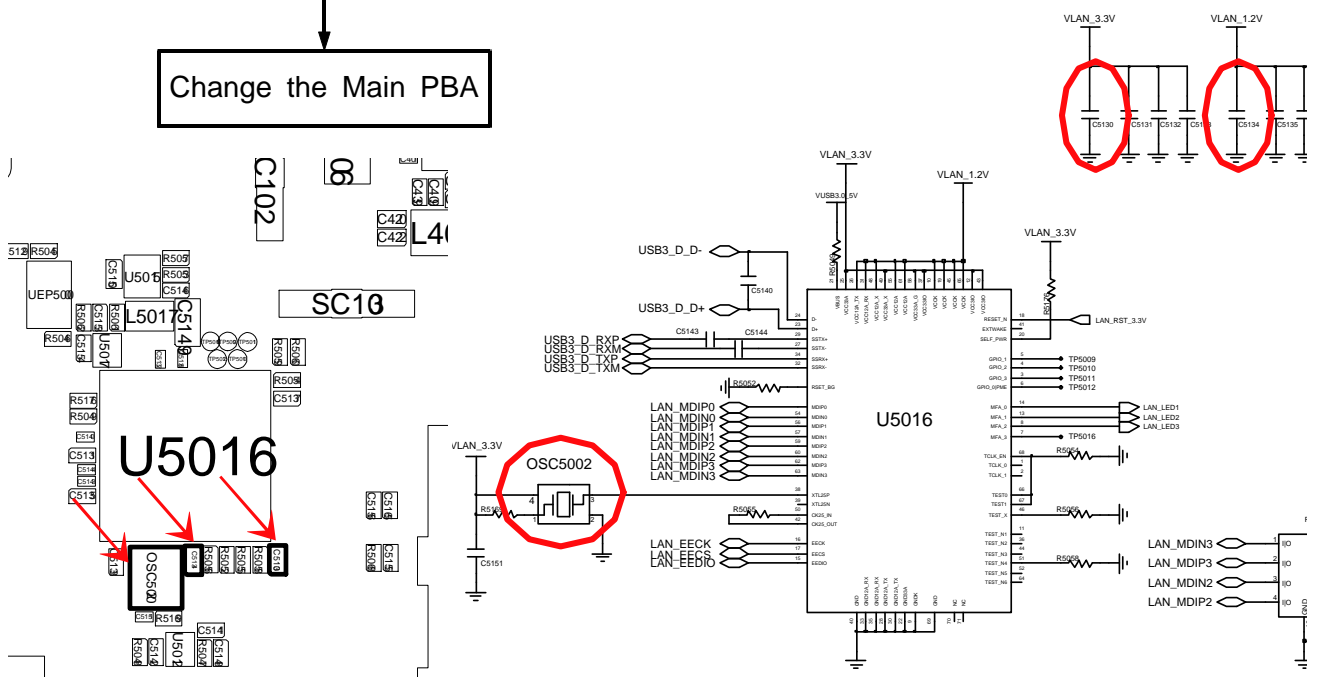
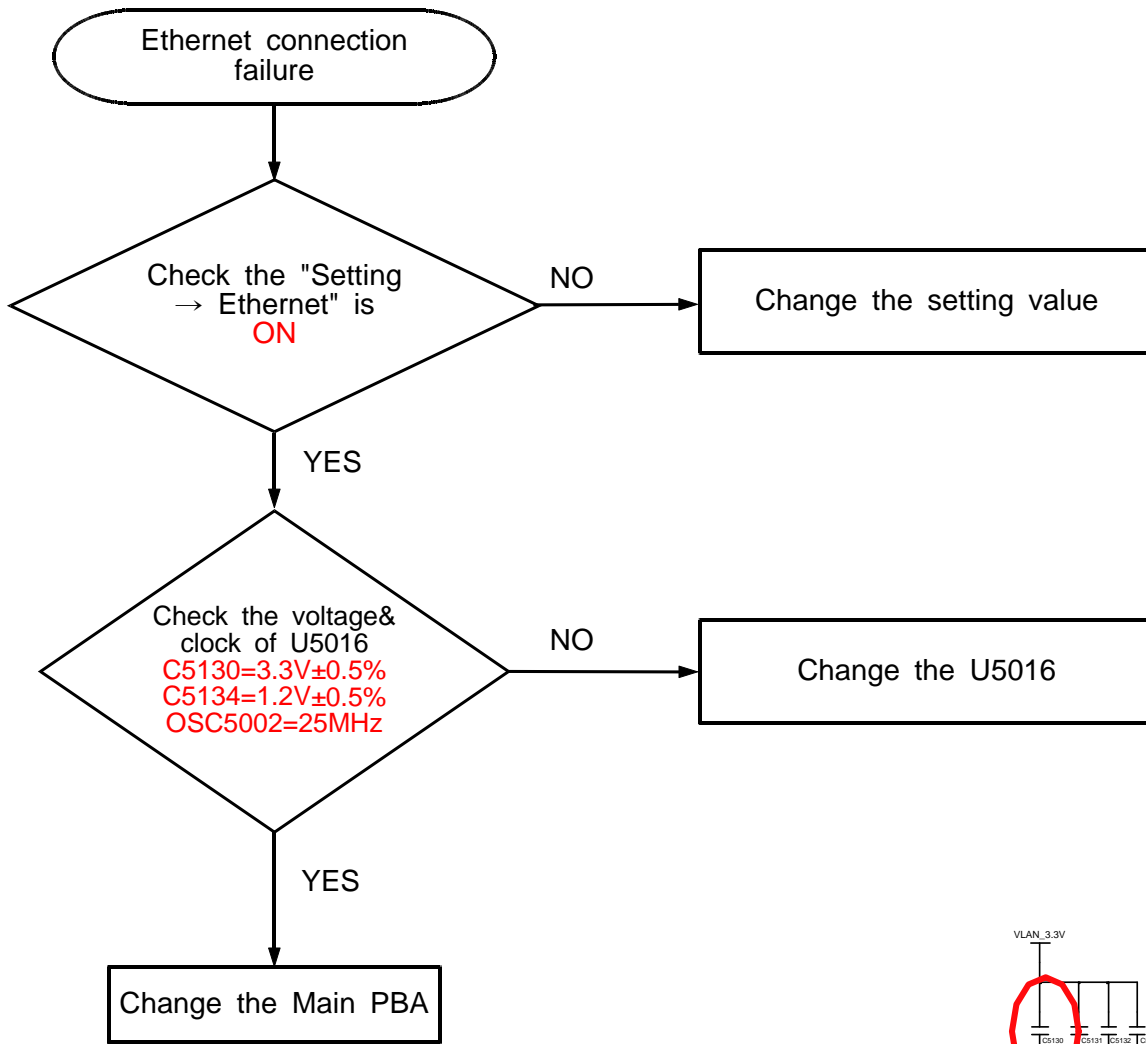
8-3-4 Display problem



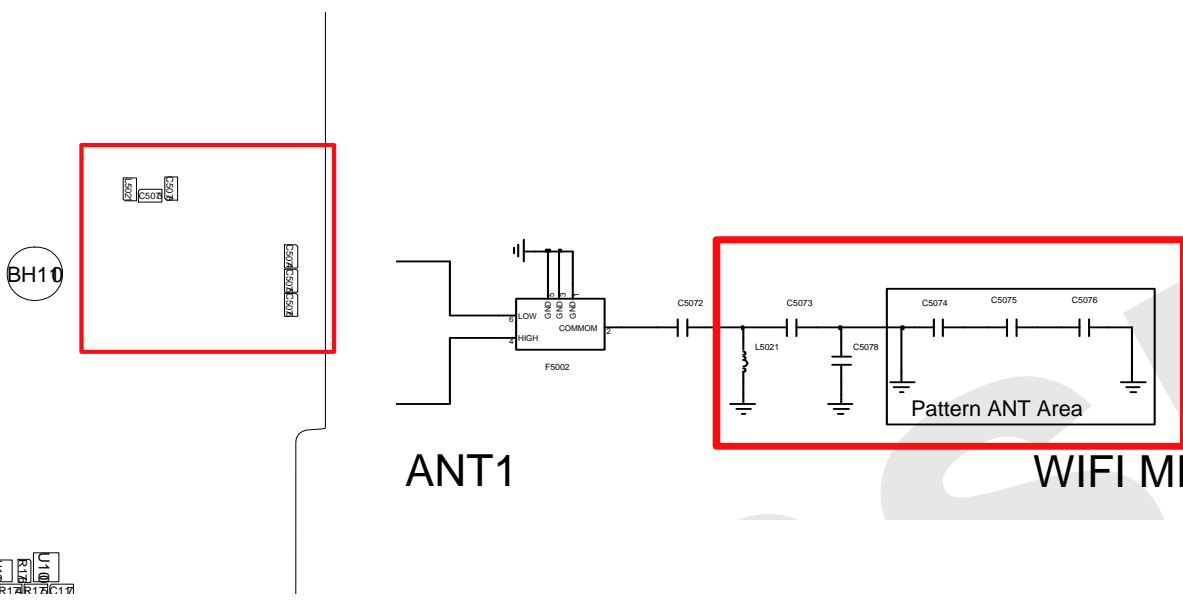
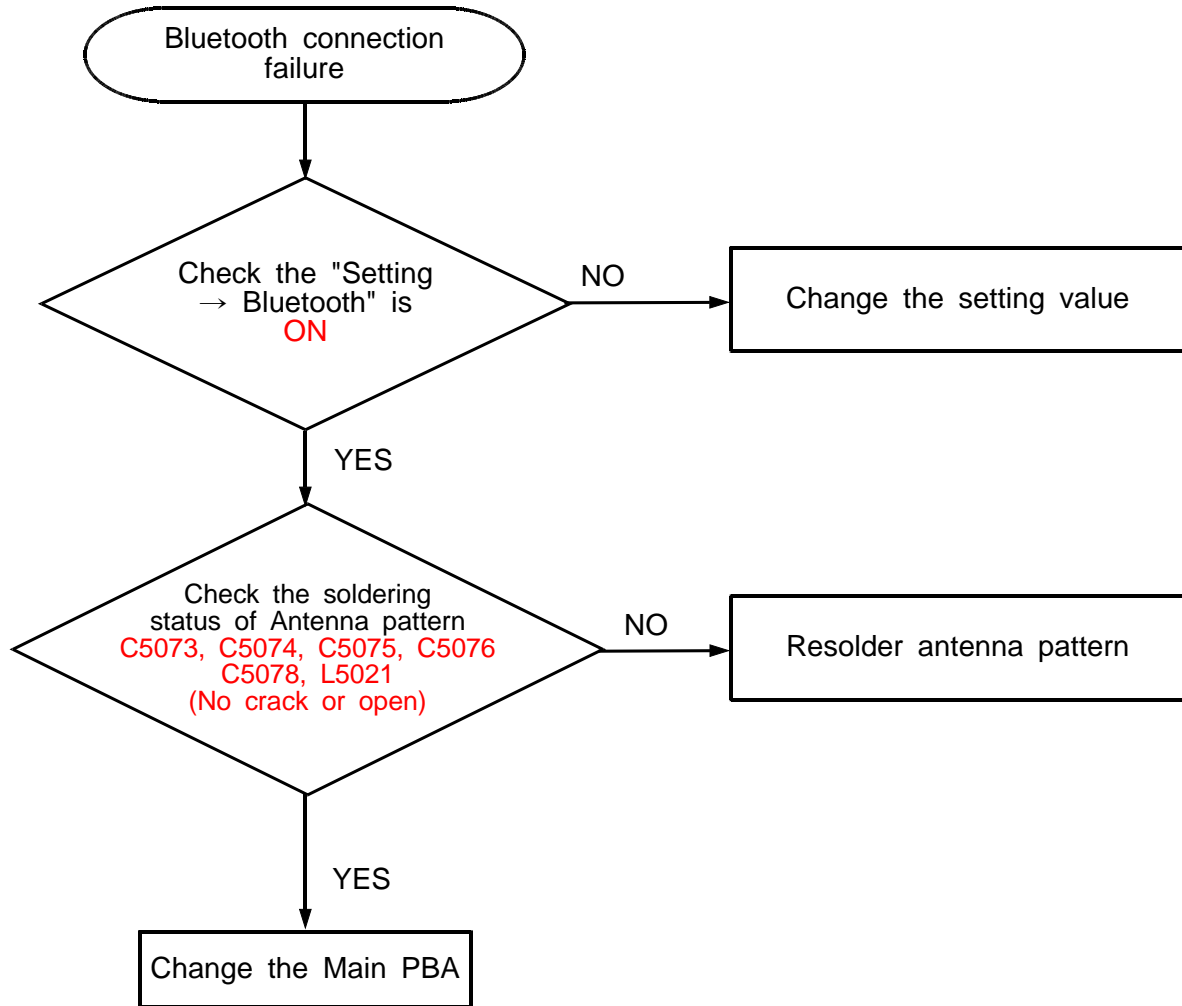
8-3-5 Optical output problem



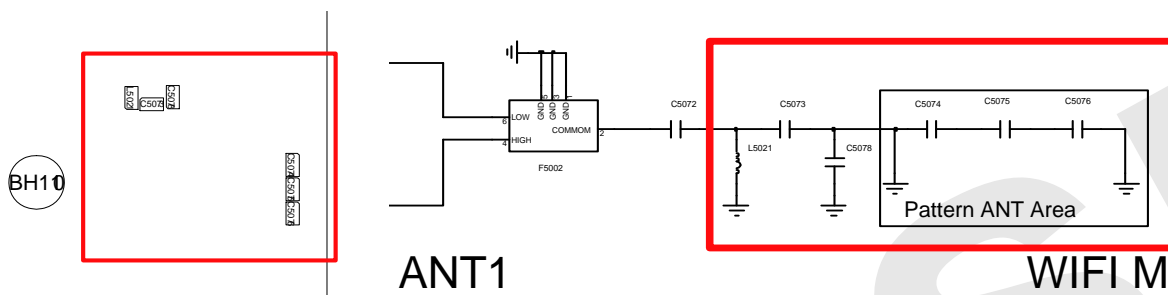
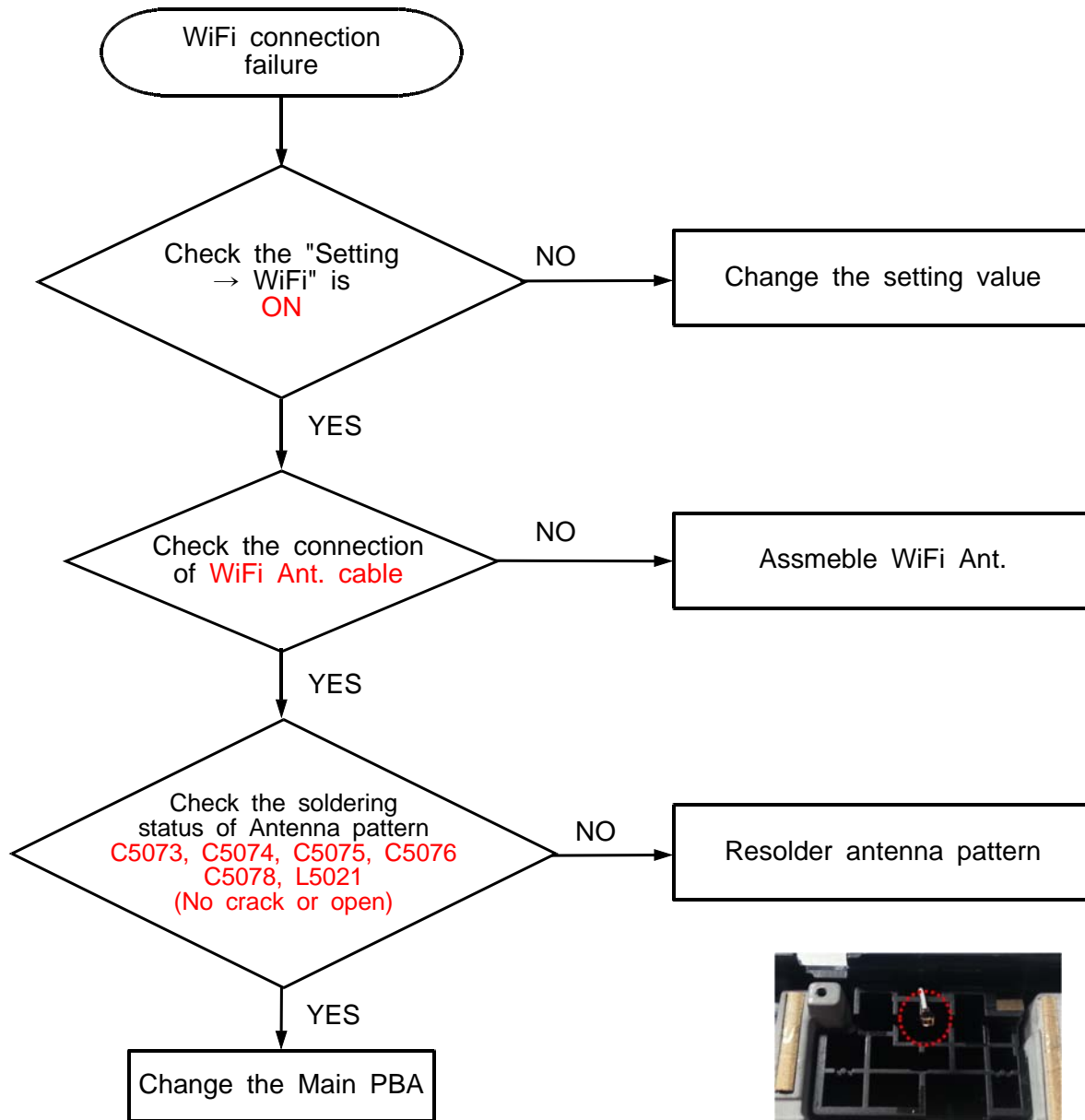
8-3-6 Ethernet problem



8-3-7 Bluetooth problem



8-3-8 WiFi problem



8-5. Service Schematics

- NC Point(Top View)

UME300, UME301, UME303, UME304

Ball Locations (x16)

- Populated ball
- + Ball not populated

Top view
(See the balls through the package)

	1	2	3	4	5	6	7	8	9
A	●	●	●	+	+	+	●	●	●
B	●	●	●	+	+	+	●	●	●
C	●	●	●	+	+	+	●	●	●
D	●	●	●	+	+	+	●	●	●
E	●	●	●	+	+	+	●	●	●
F	●	●	●	+	+	+	●	●	●
G	●	●	●	+	+	+	●	●	●
H	●	●	●	+	+	+	●	●	●
J	●	●	●	+	+	+	●	●	●
K	●	●	●	+	+	+	●	●	●
L	●	●	●	+	+	+	●	●	●
M	●	●	●	+	+	+	●	●	●
N	●	●	●	+	+	+	●	●	●
P	●	●	●	+	+	+	●	●	●
R	●	●	●	+	+	+	●	●	●
T	●	●	●	+	+	+	●	●	●

UME302

○ → NC

