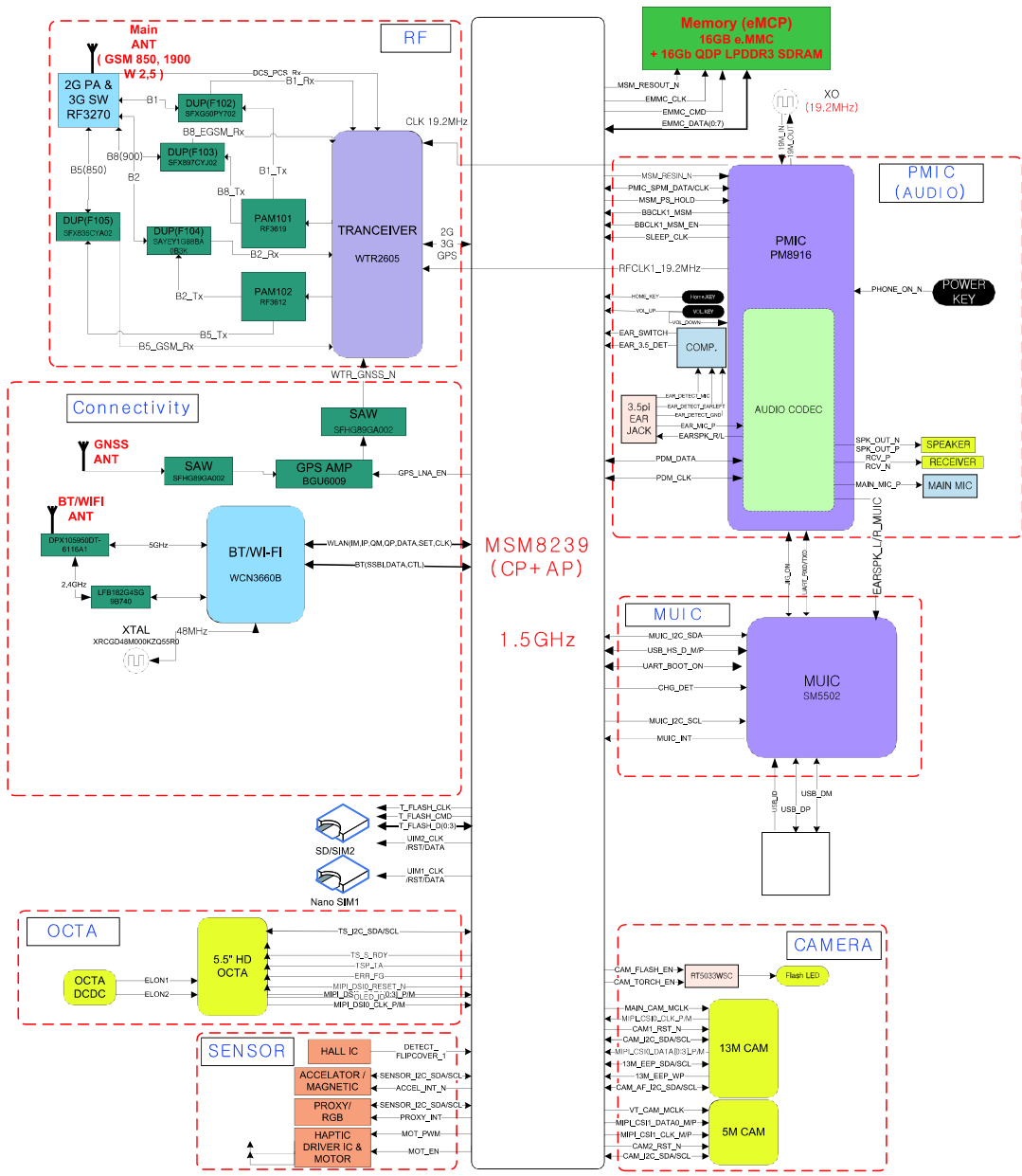


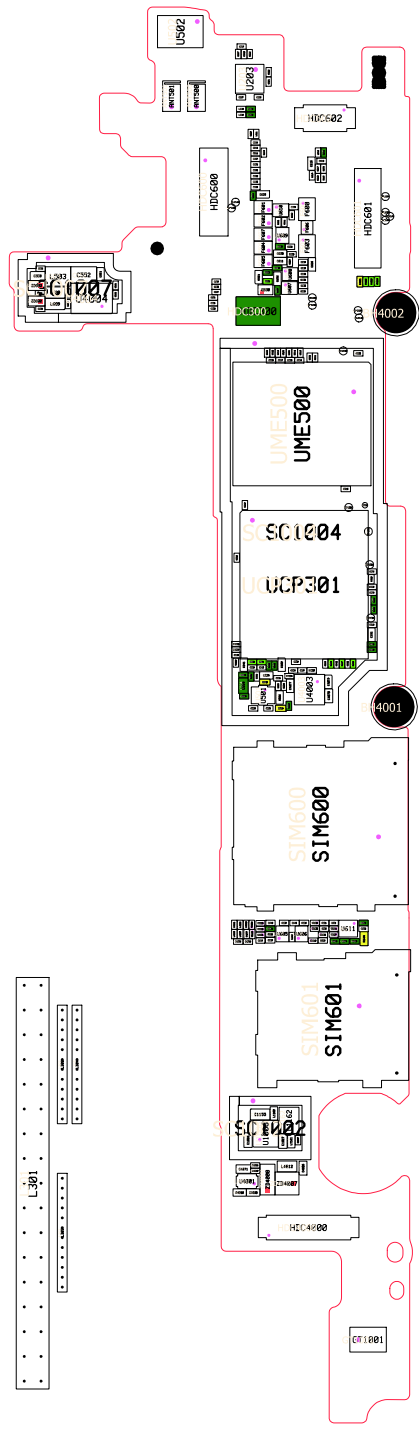
8. Level 3 Repair

8-1. Block Diagram

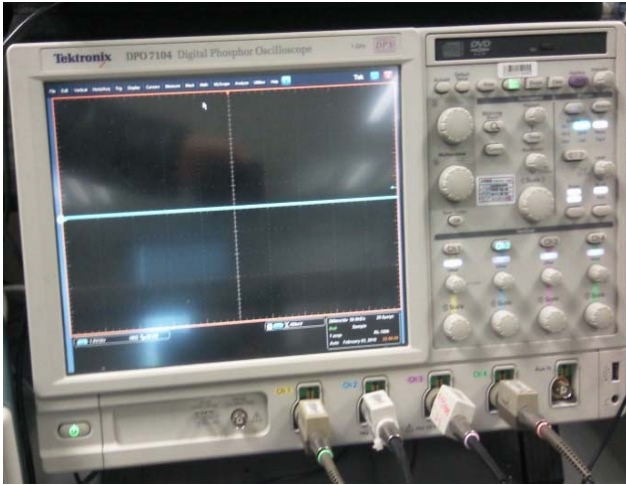
A7 3G(SM-A700H) BLOCK DIAGRAM



8-2. PCB Diagrams
8-2-1. Main PCB Top



8-2-3. Equipments



↑ Oscilloscope



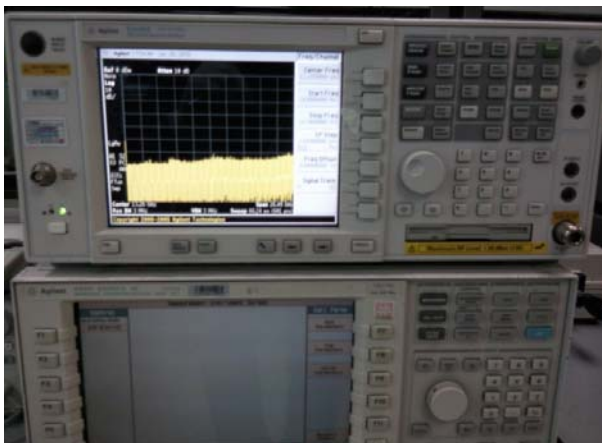
↑ Digital Multimeter



↑ Power Supply



↑ + driver, ESD Safe Tweezer



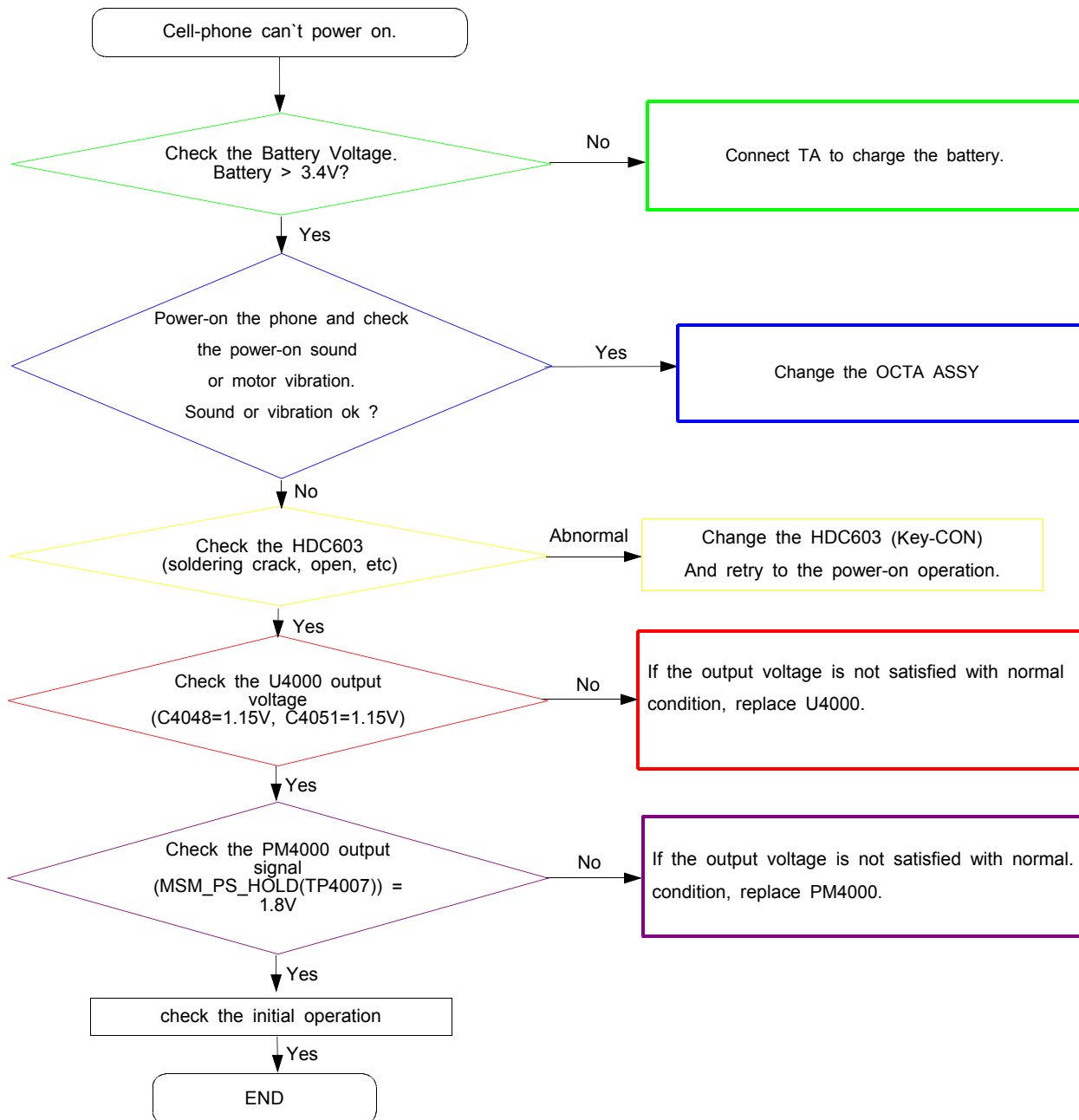
↑ 8960 & Spectrum Analyzer

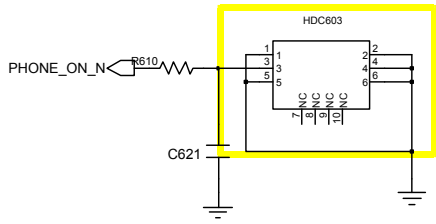


↑ Soldering iron

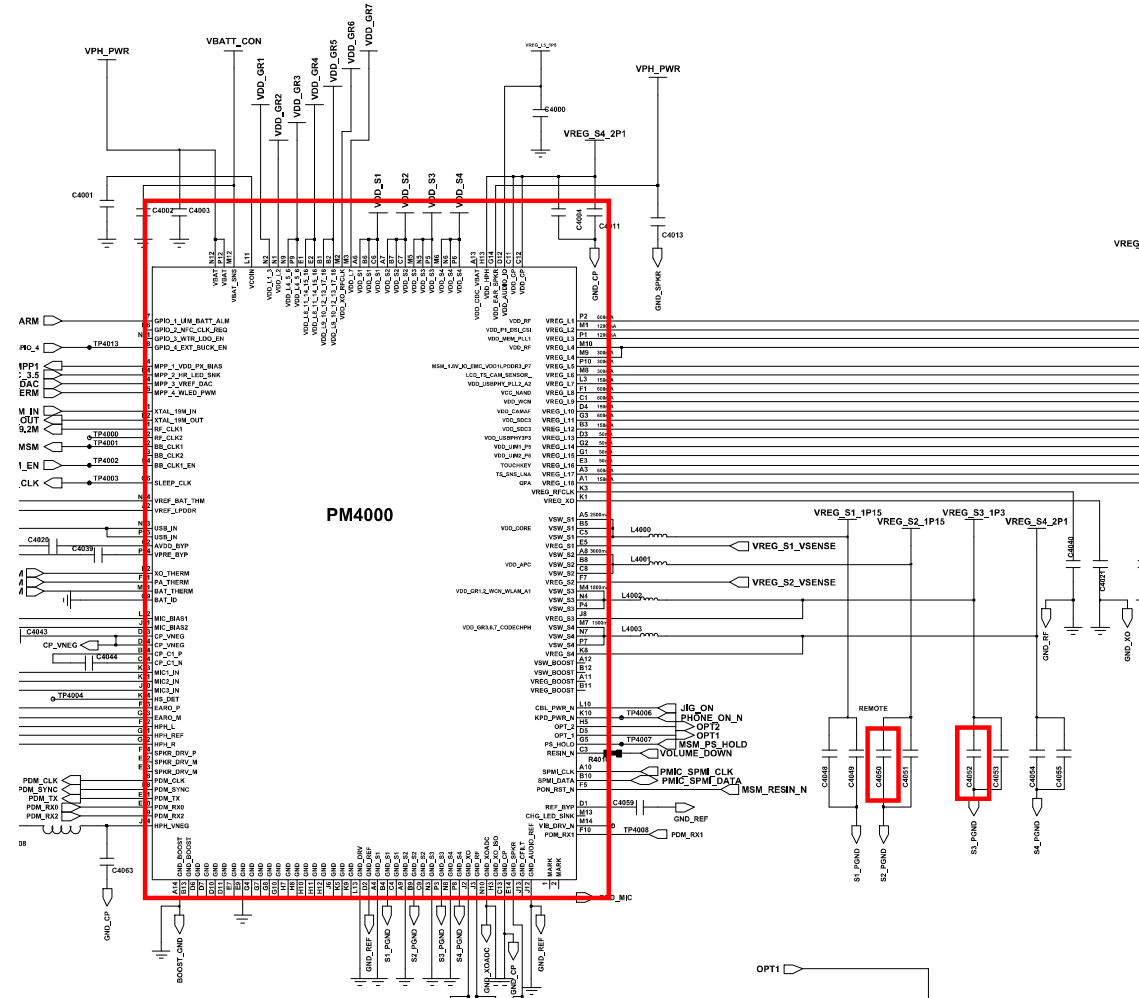
8-3. Flow Chart of Troubleshooting

8-3-1. Power On

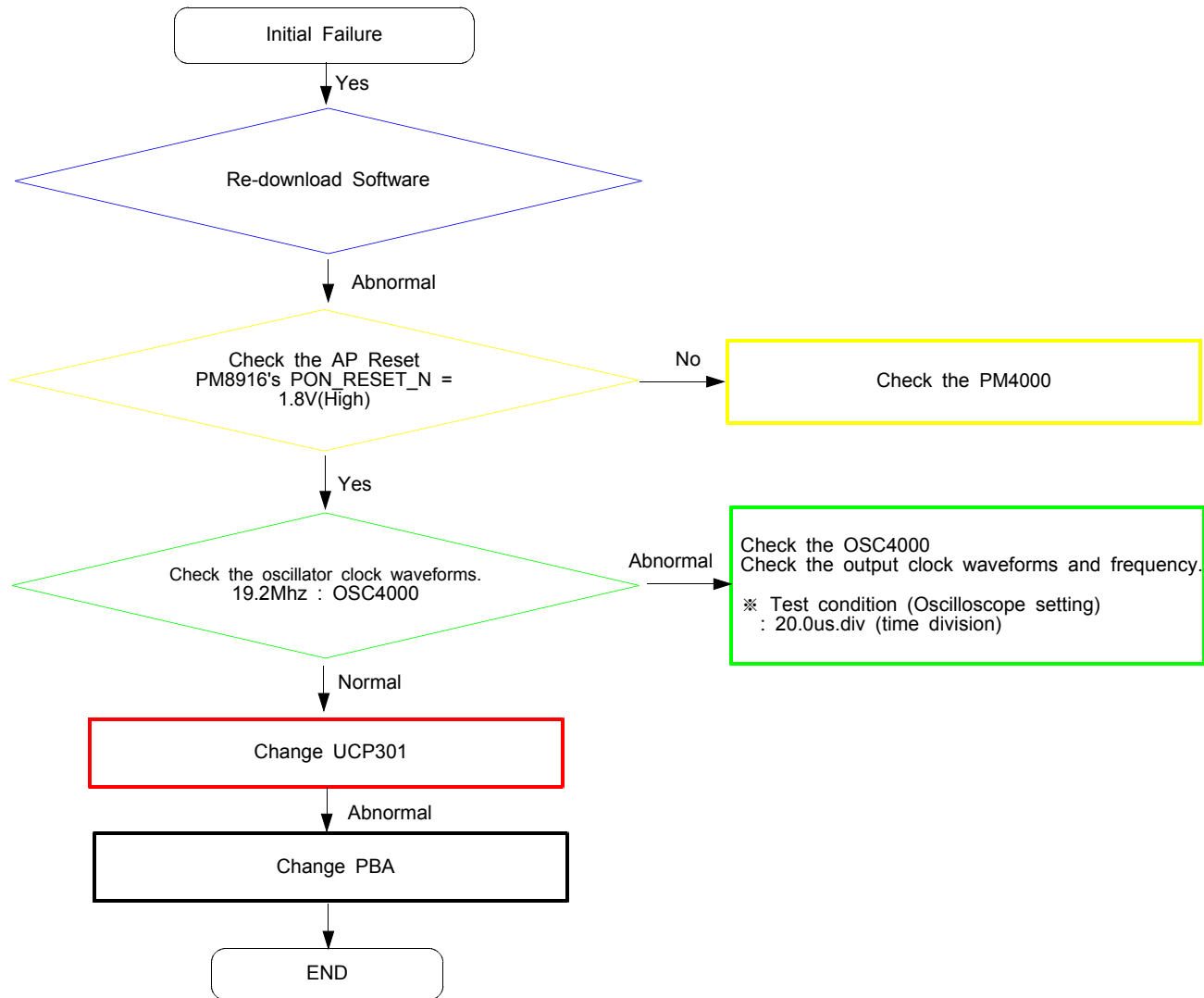


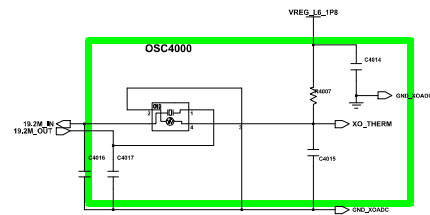
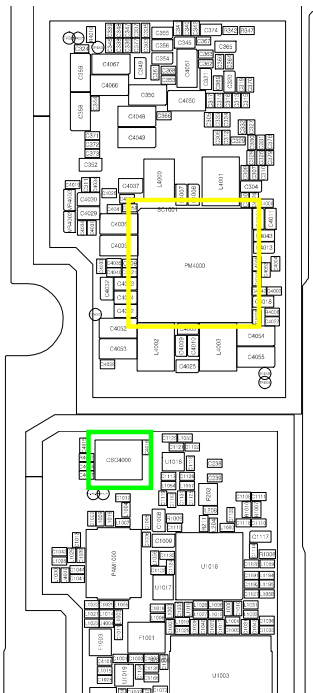
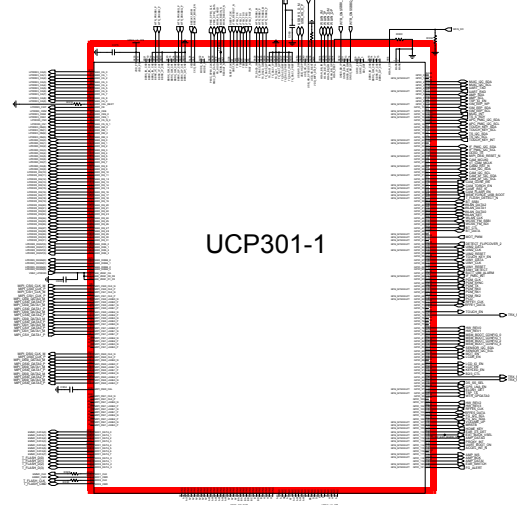
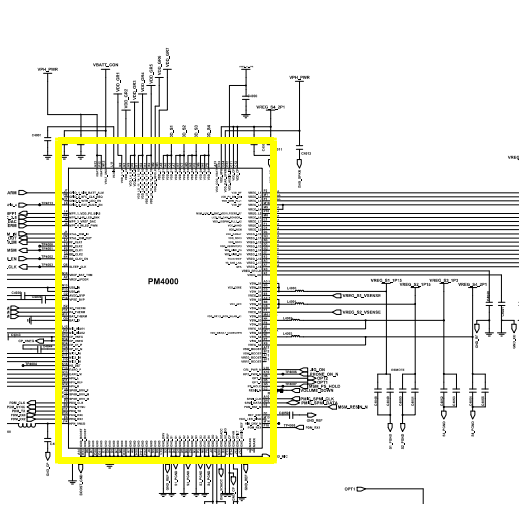


PWR KEY CON

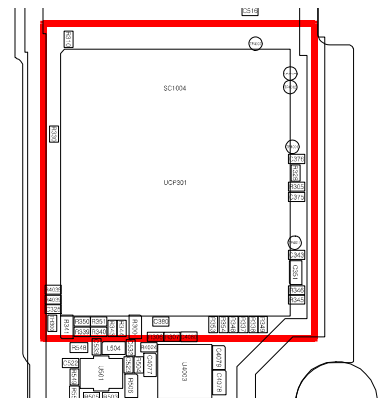


8-3-2. Initial

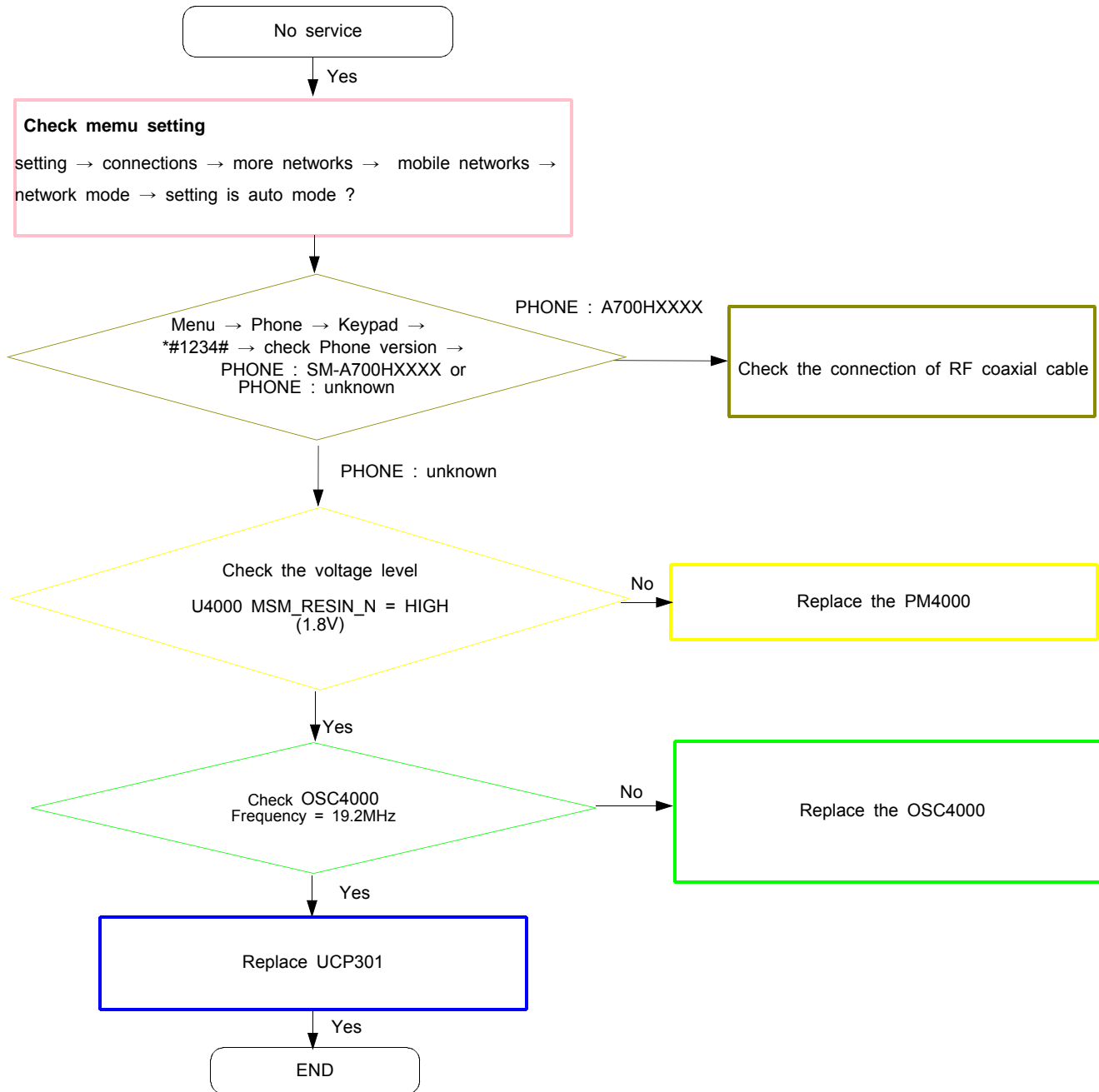


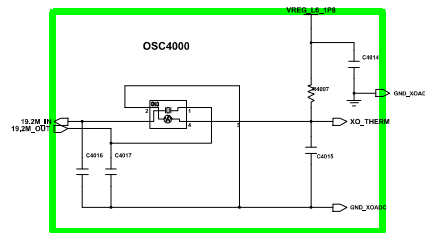
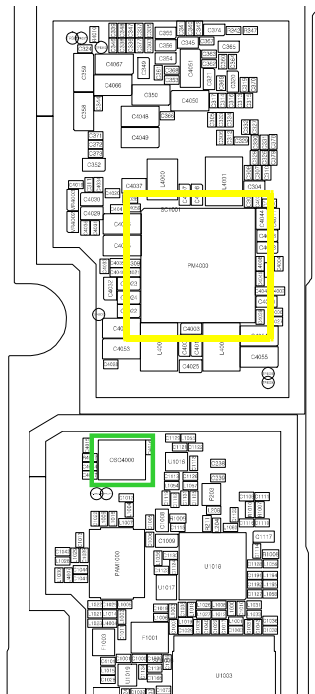
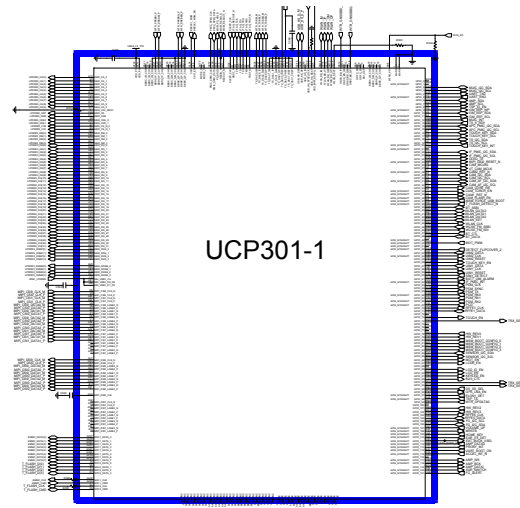
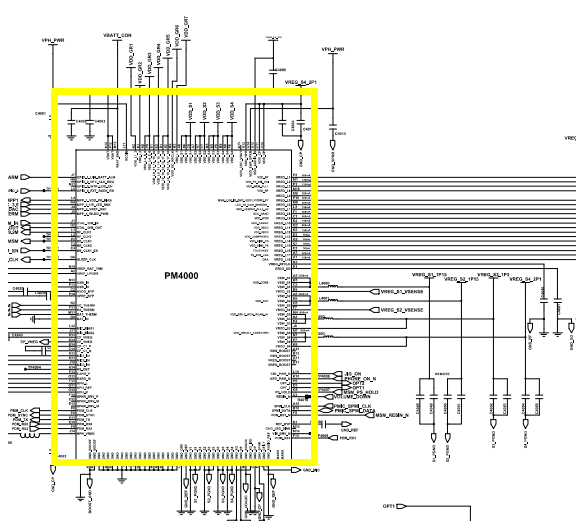


19.2MHz OSC

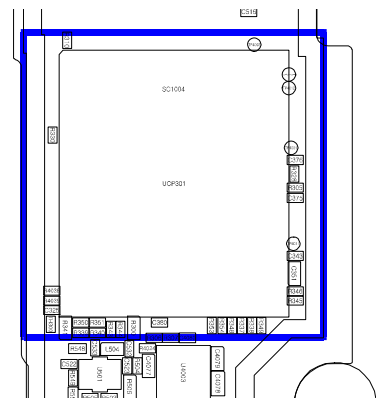


8-3-3. No Service

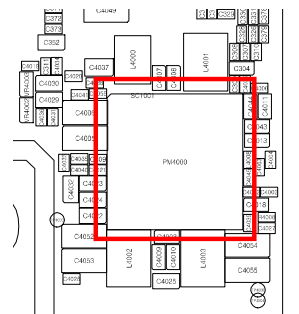
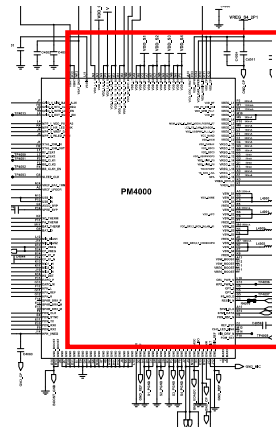
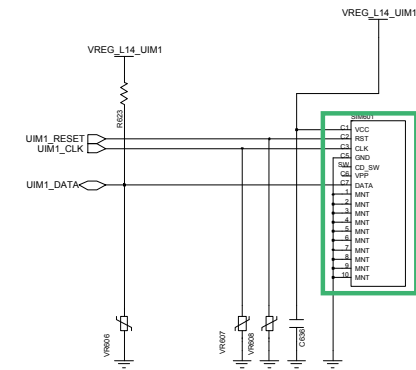
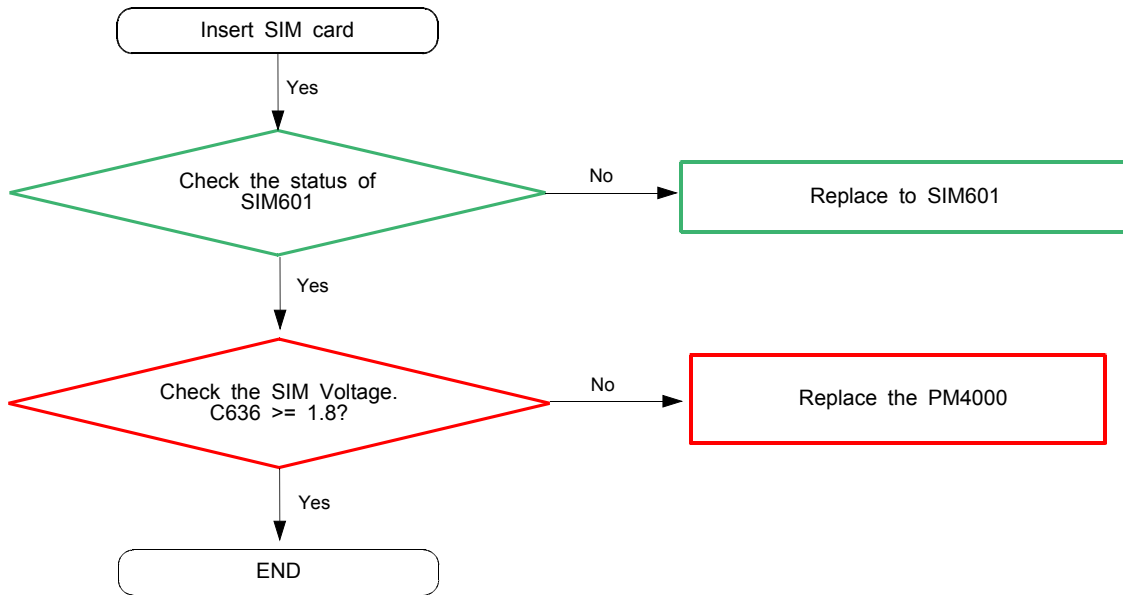




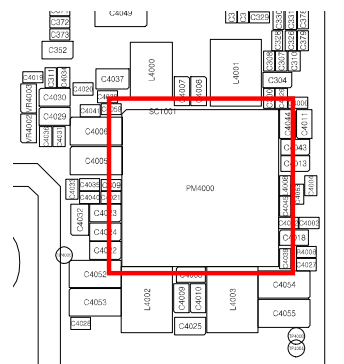
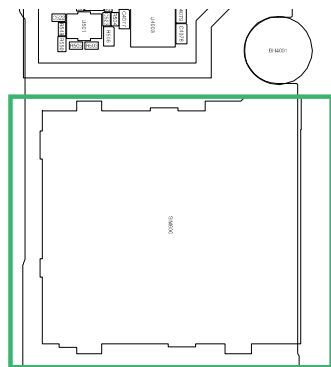
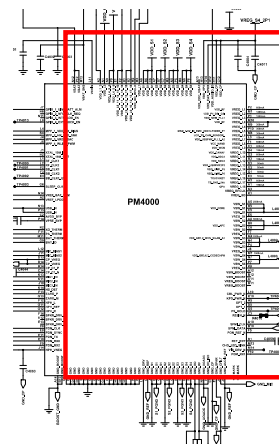
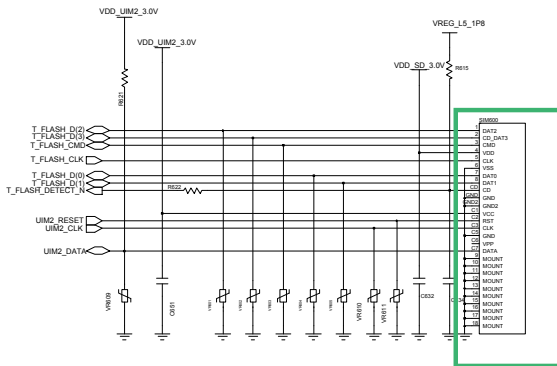
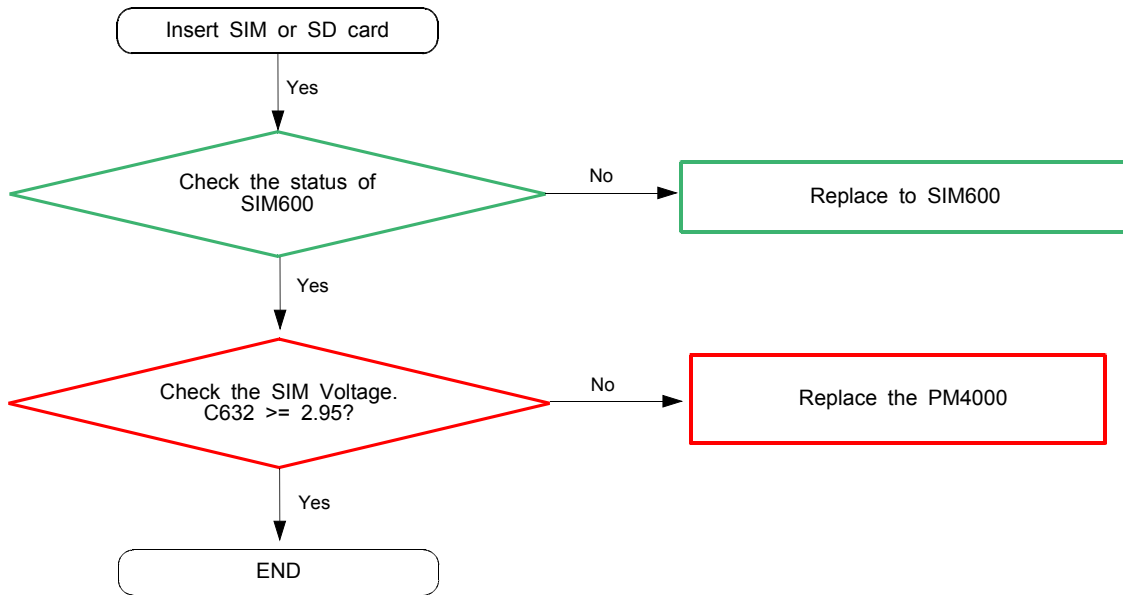
19.2MHz OSC



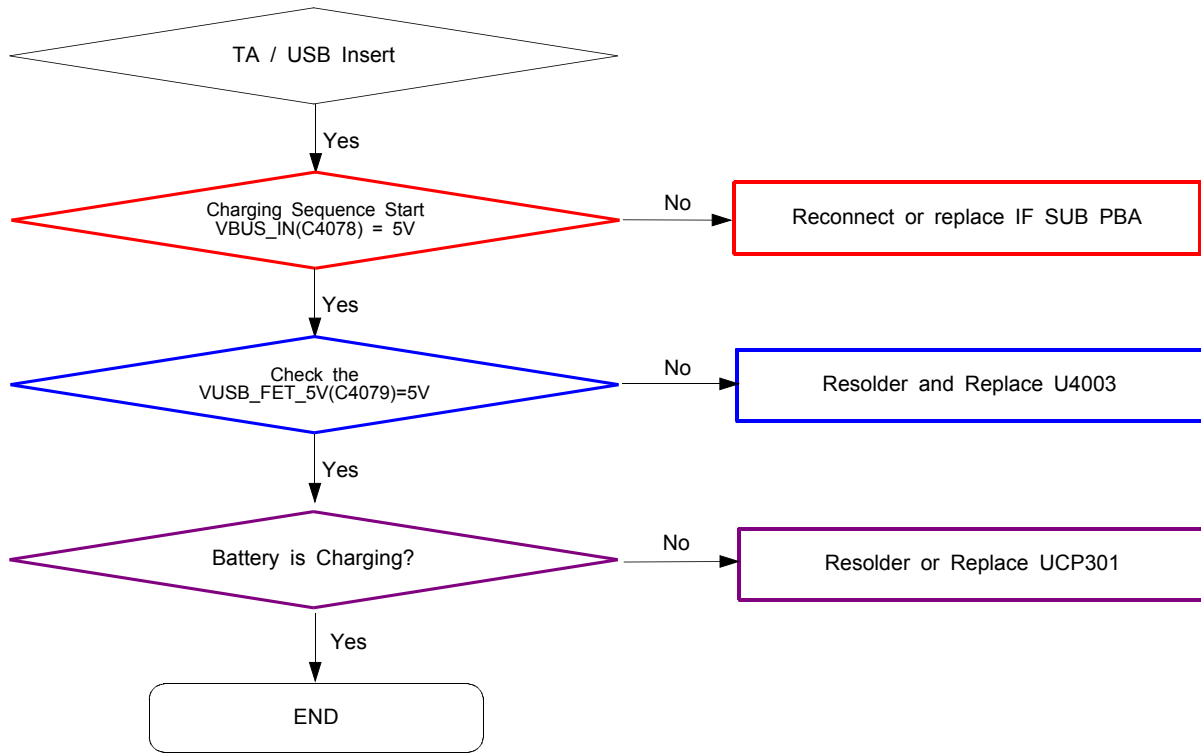
8-3-4. SIM1 Part

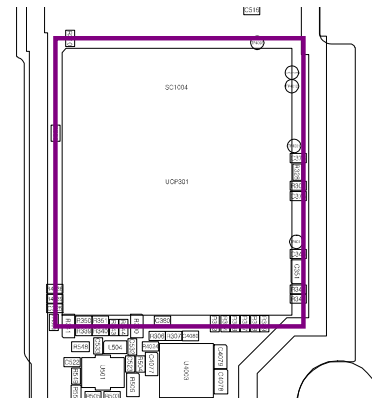
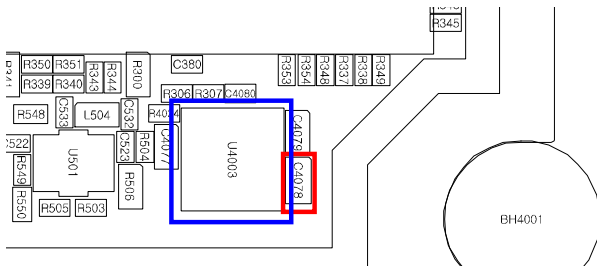
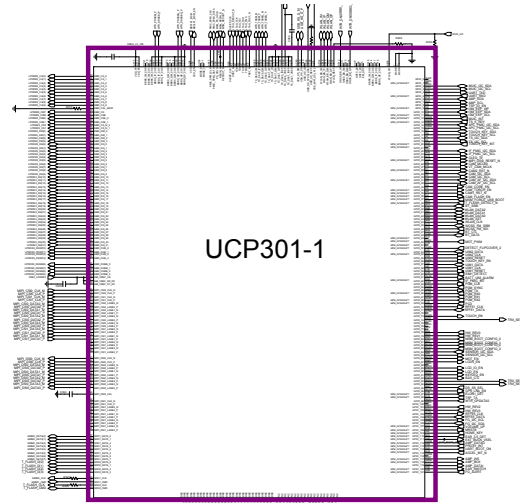
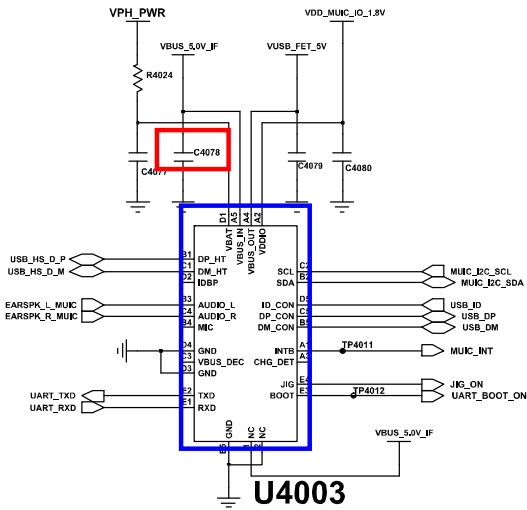


8-3-5. Hybrid Socket Part

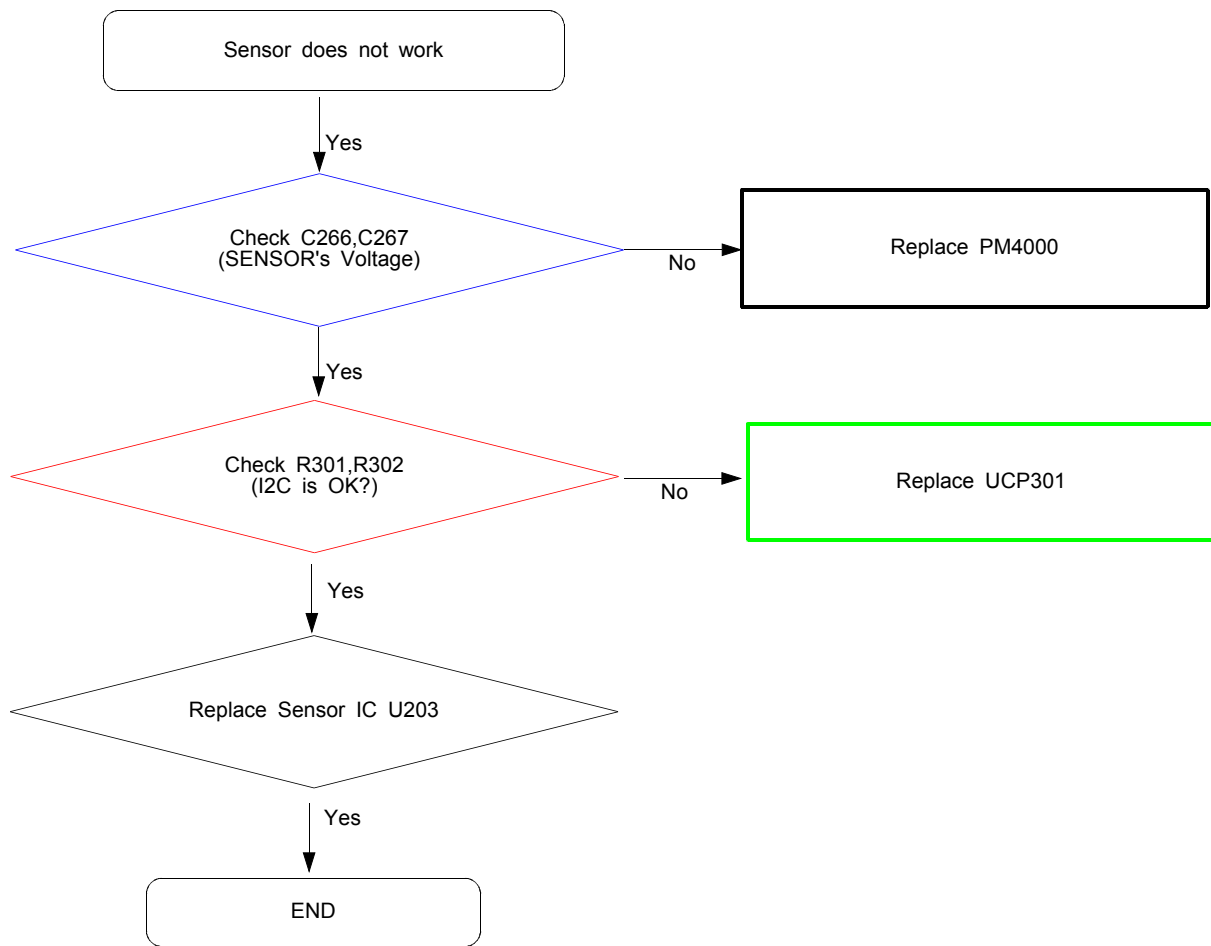


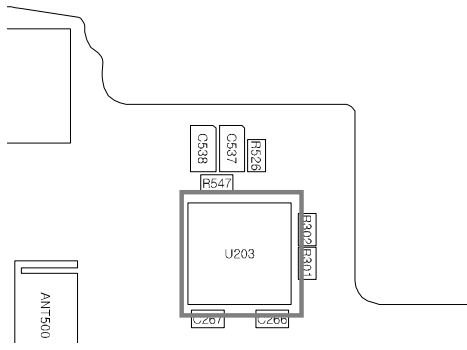
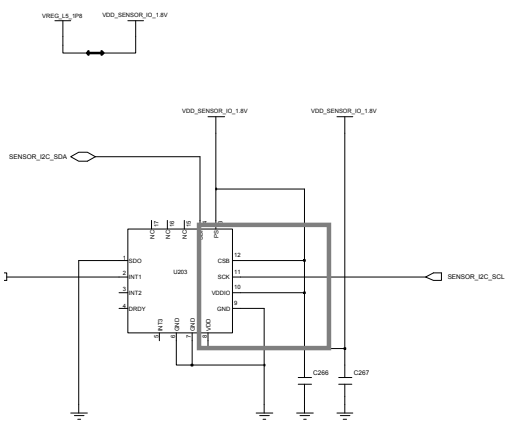
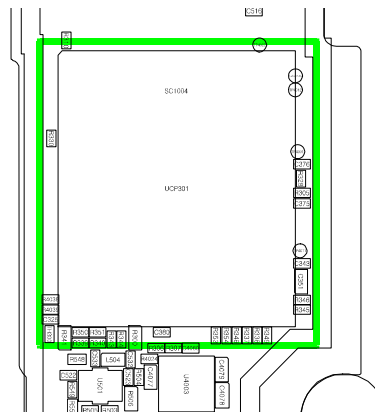
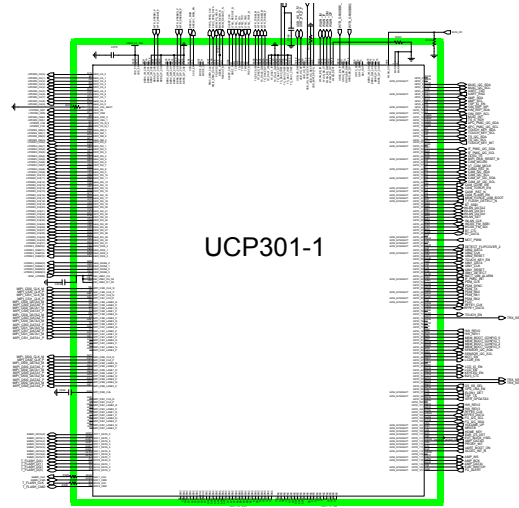
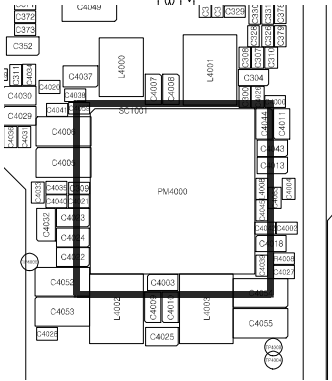
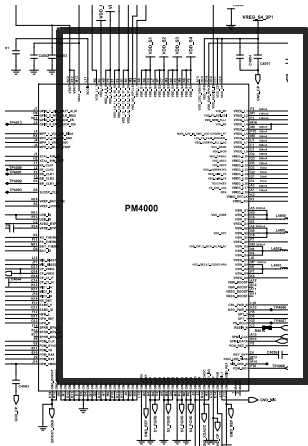
8-3-6. Charging Part



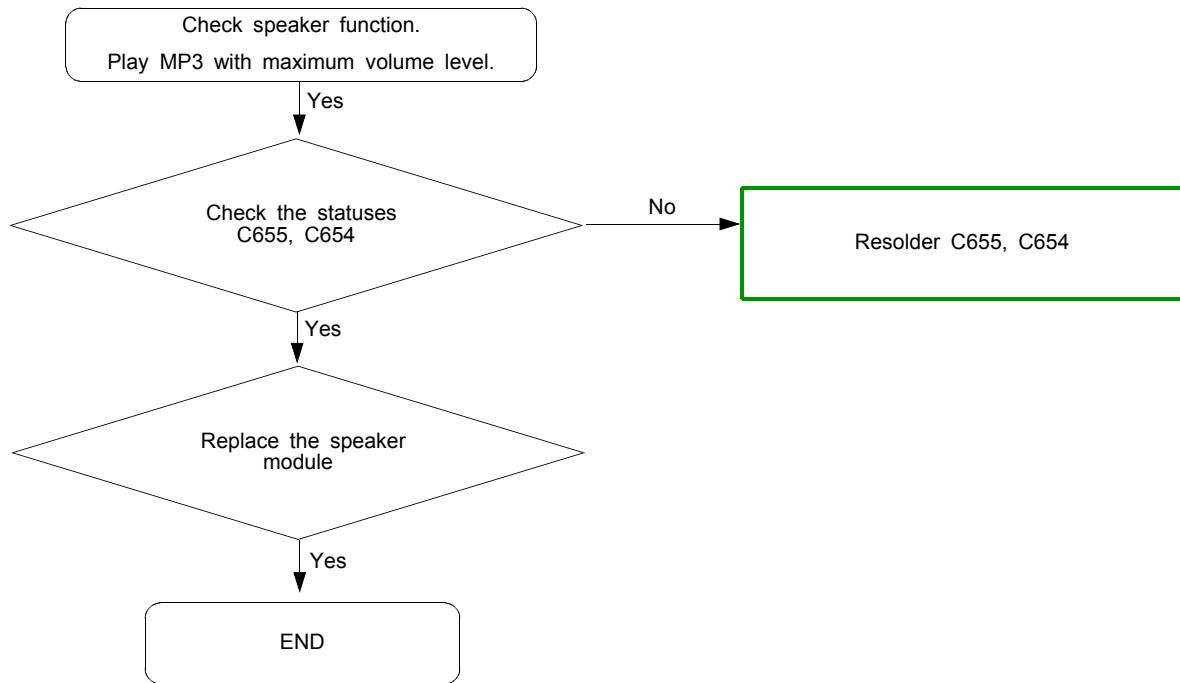


8-3-7. 6Axis Sensor

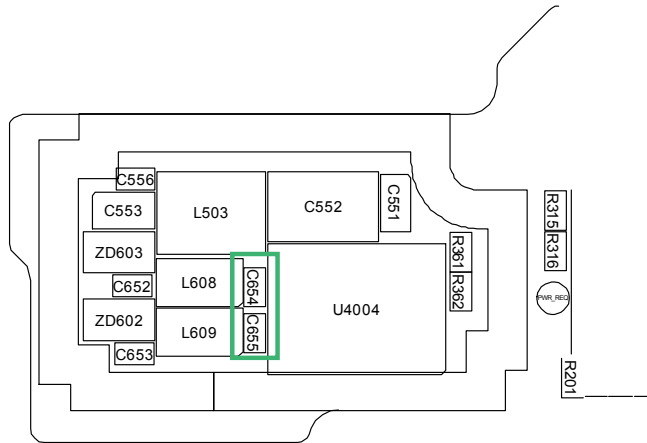
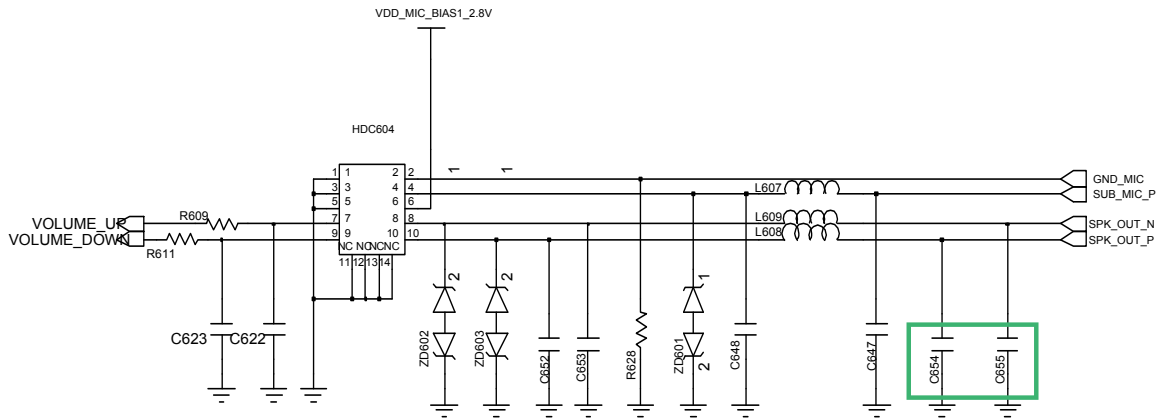




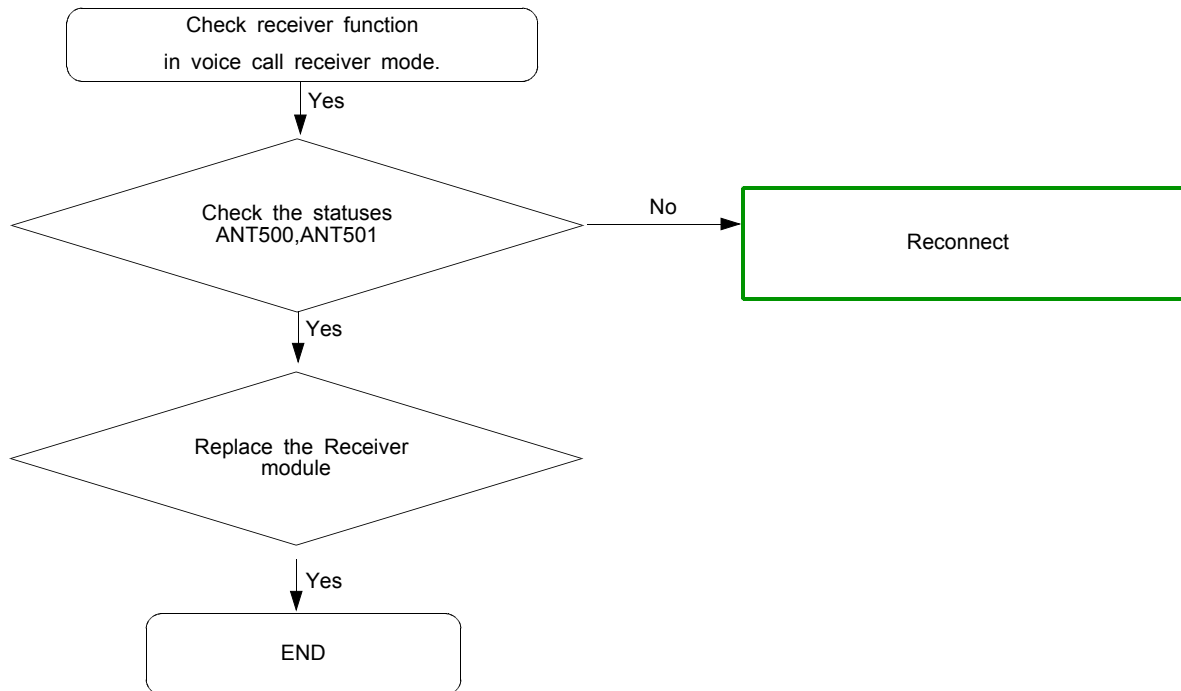
8-3-8. Speaker Part

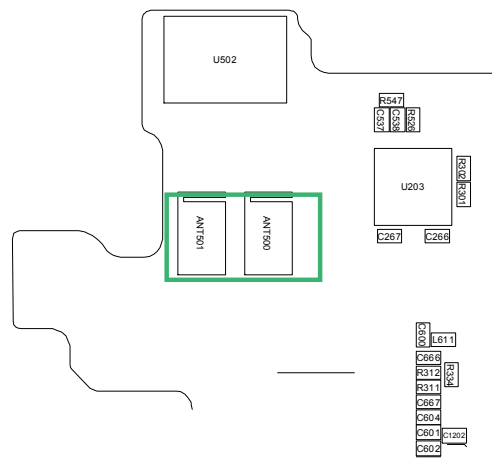
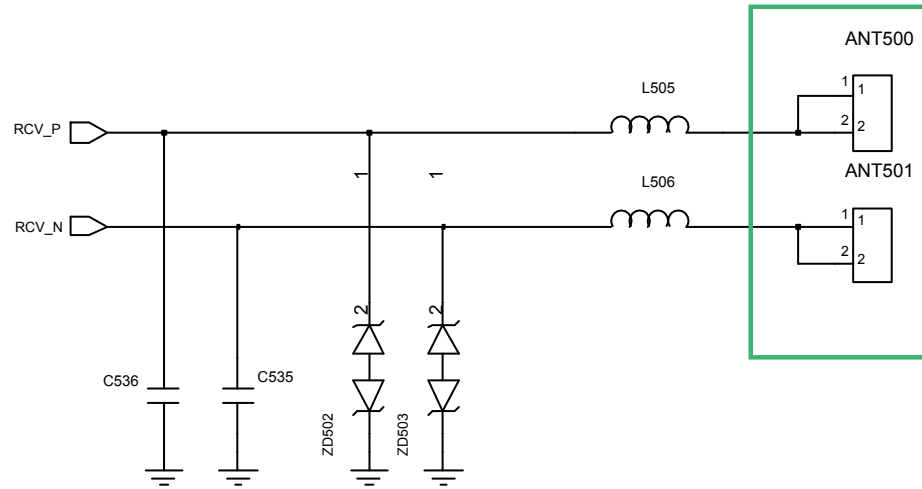


..

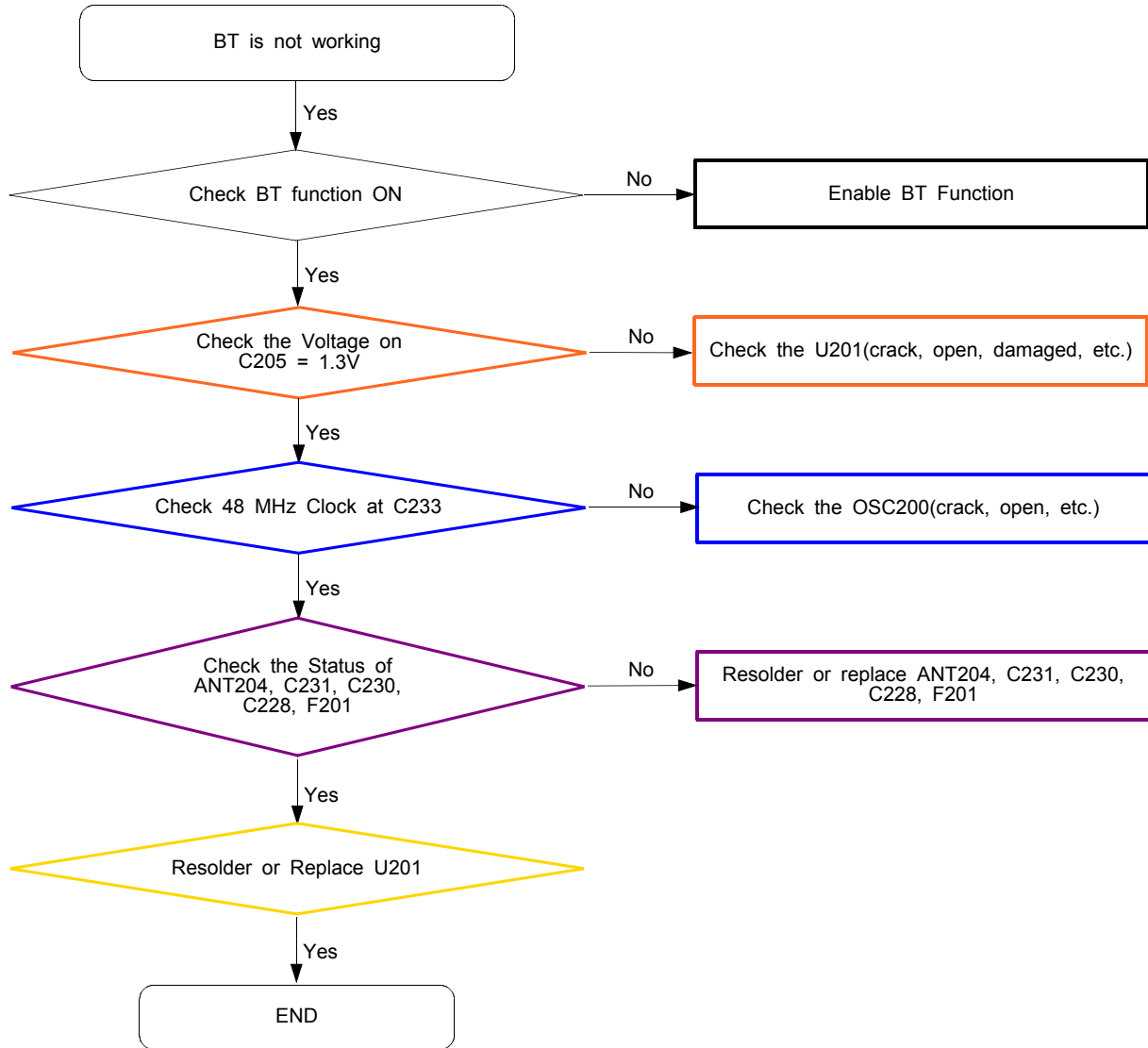


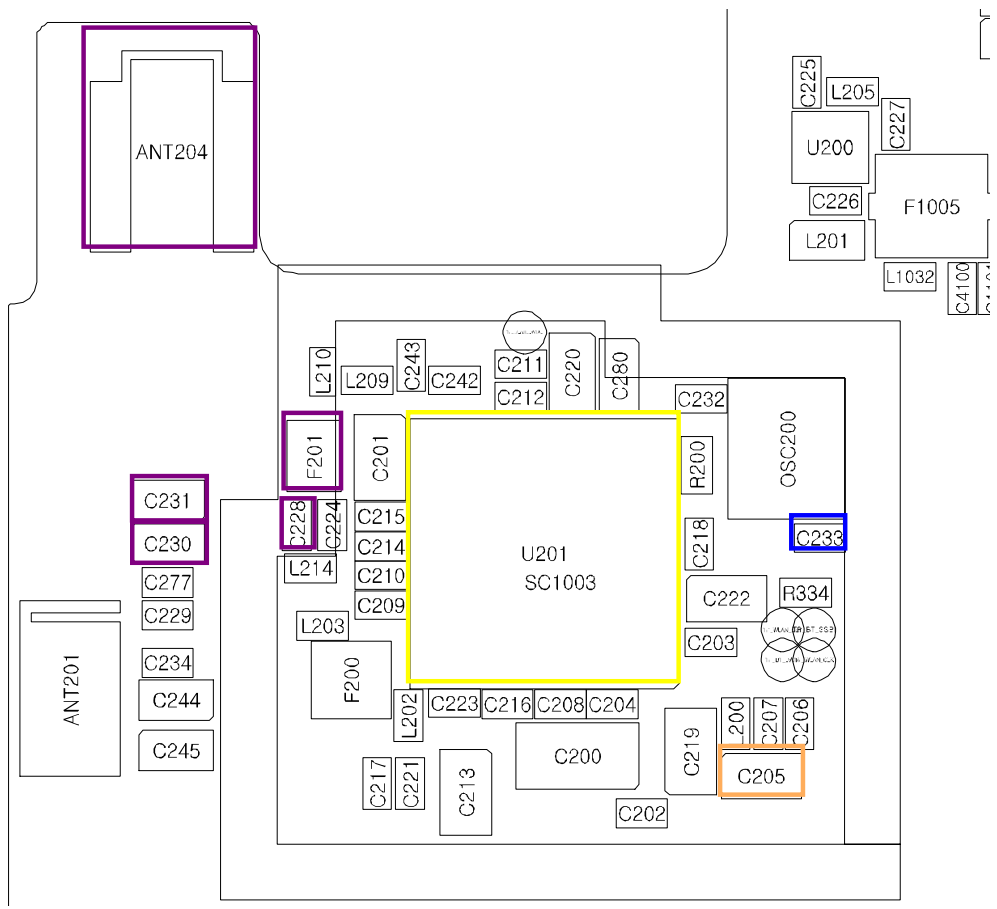
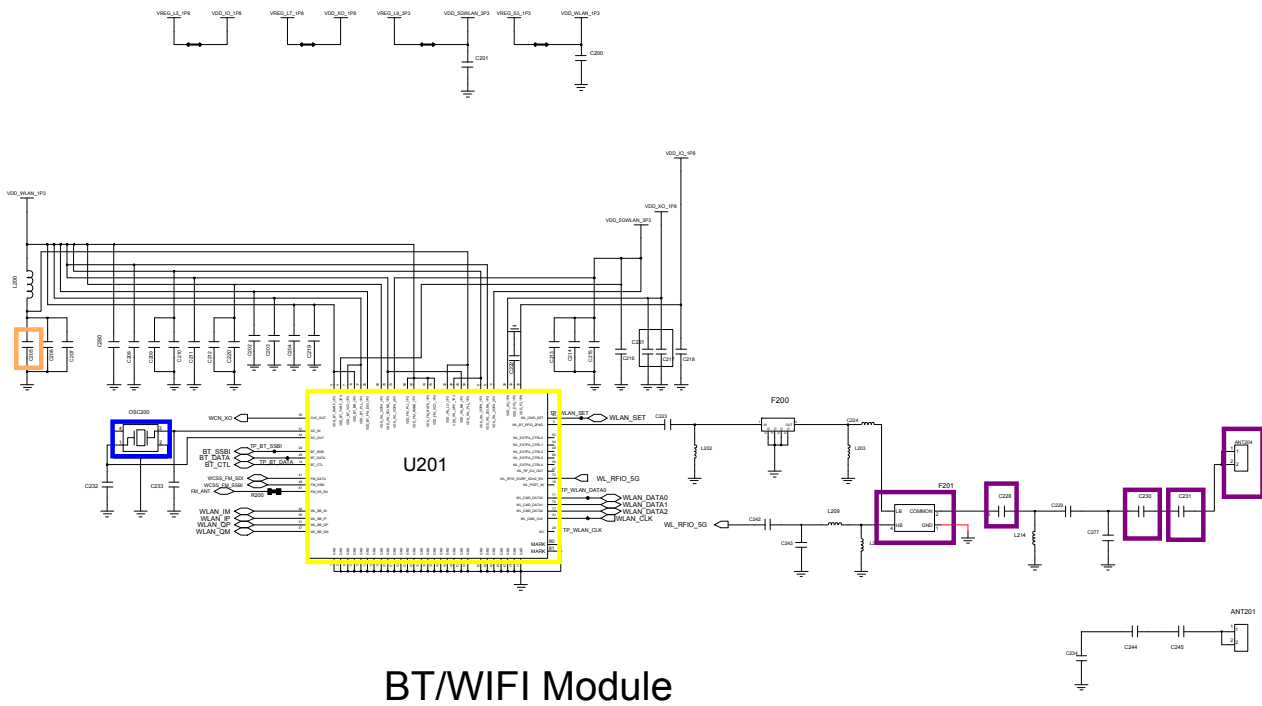
8-3-9. Receiver Part



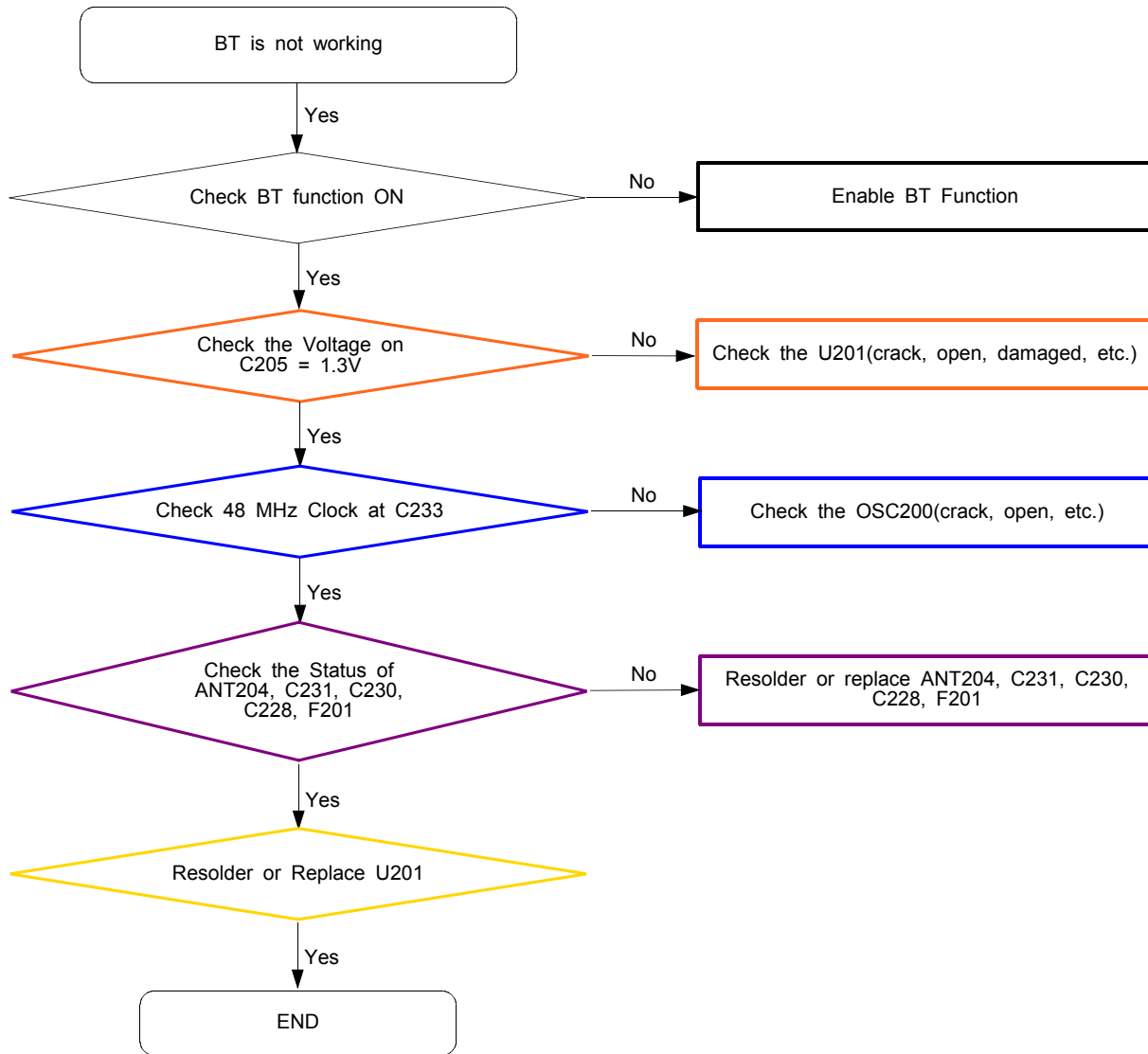


8-3-10. BT Part

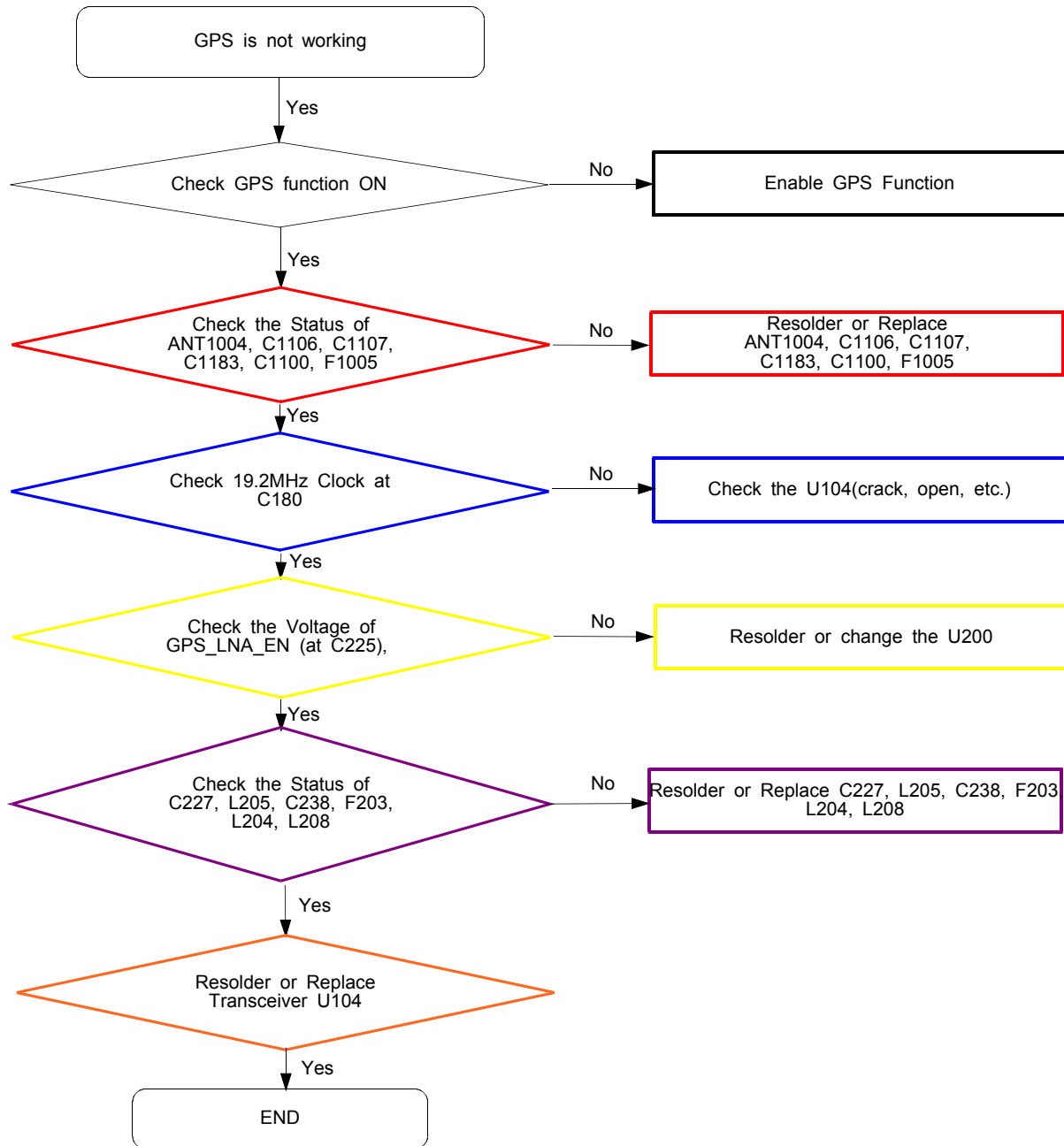


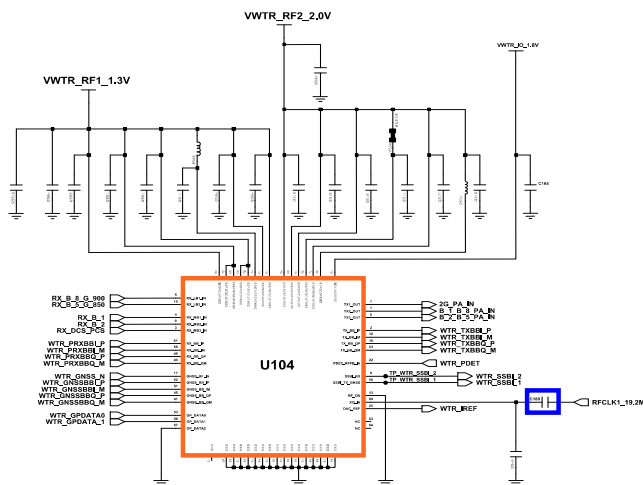
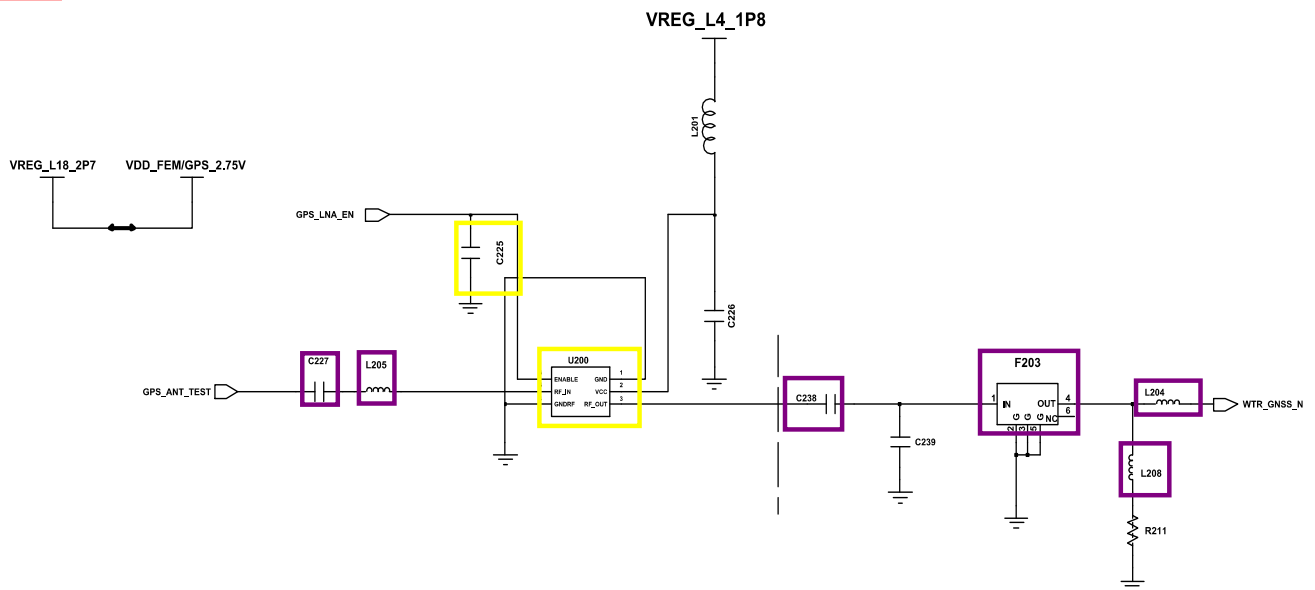
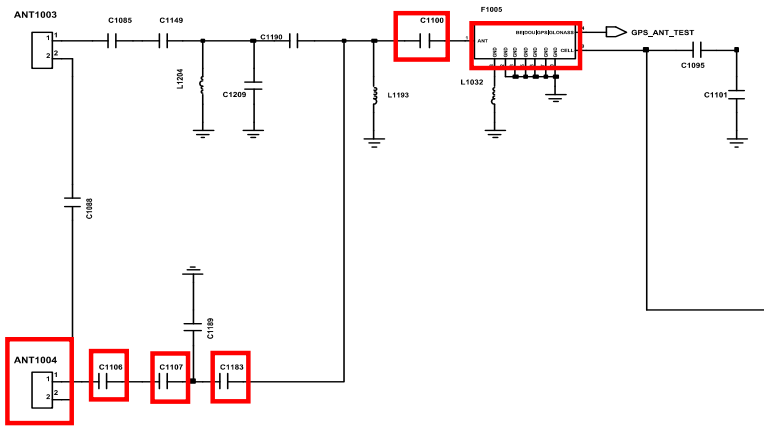


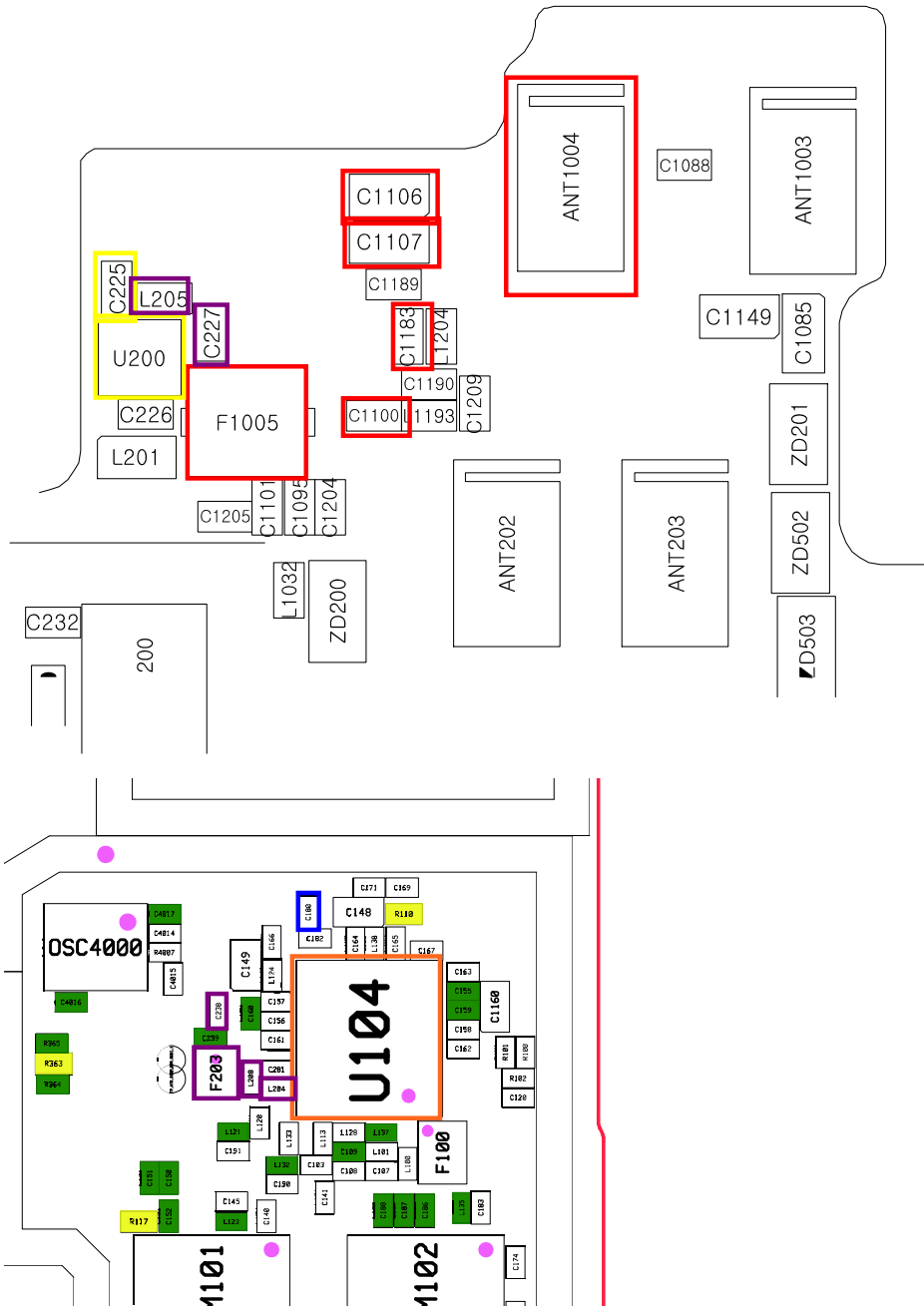
8-3-11. WiFi Part



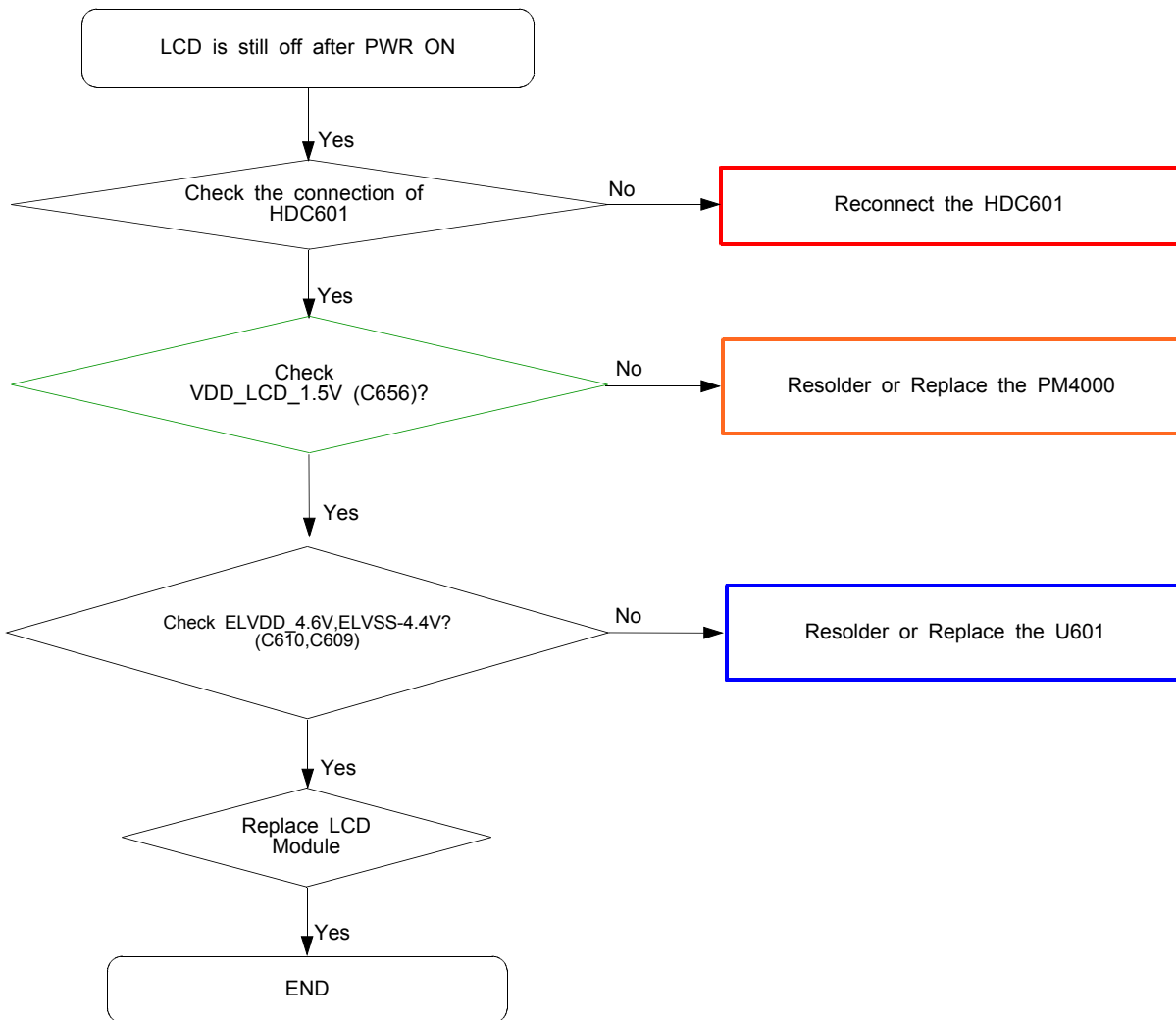
8-3-12. GPS Part

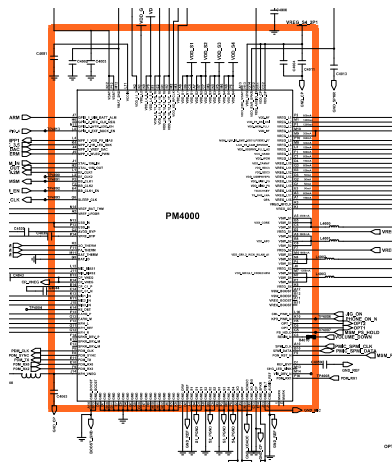
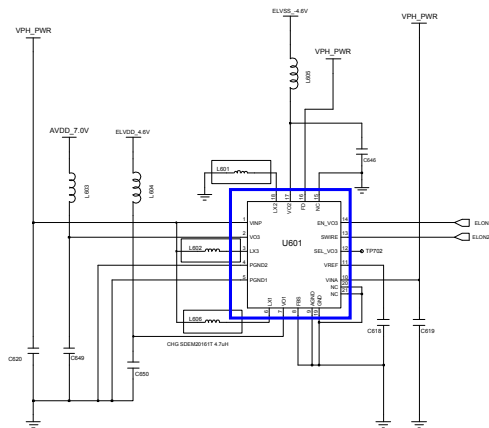
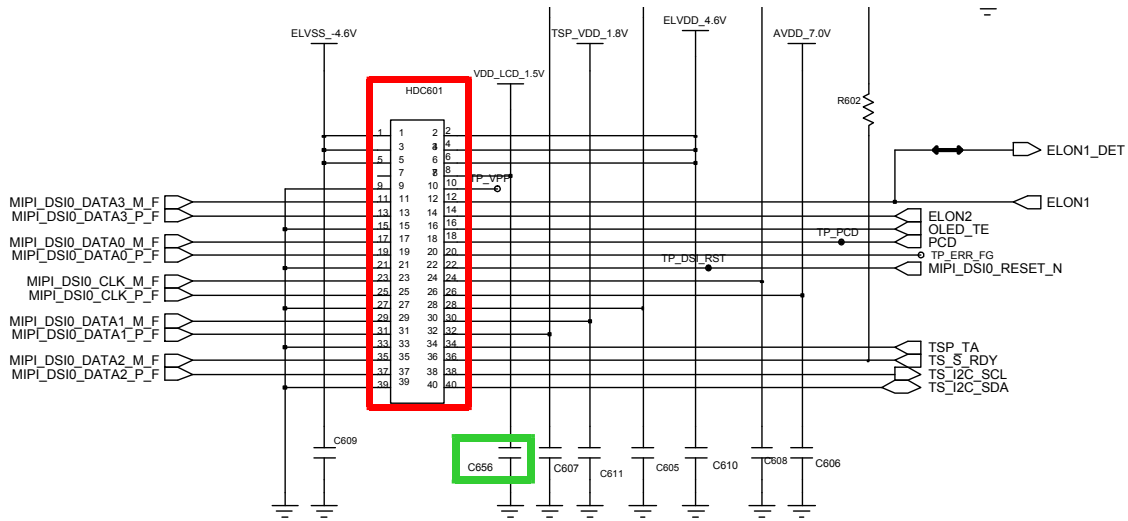


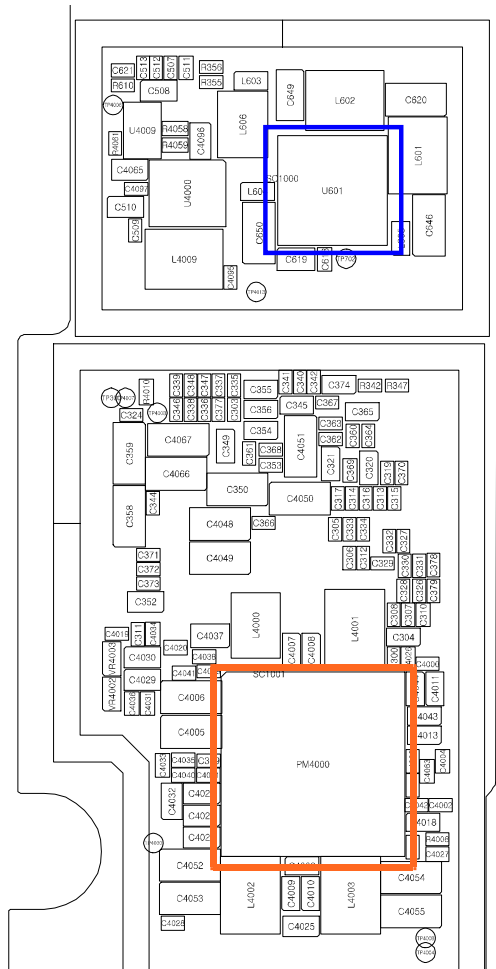
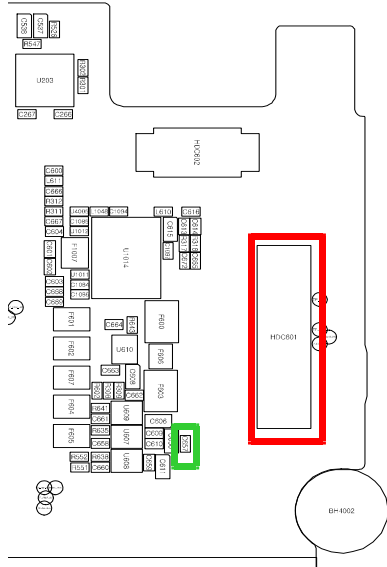




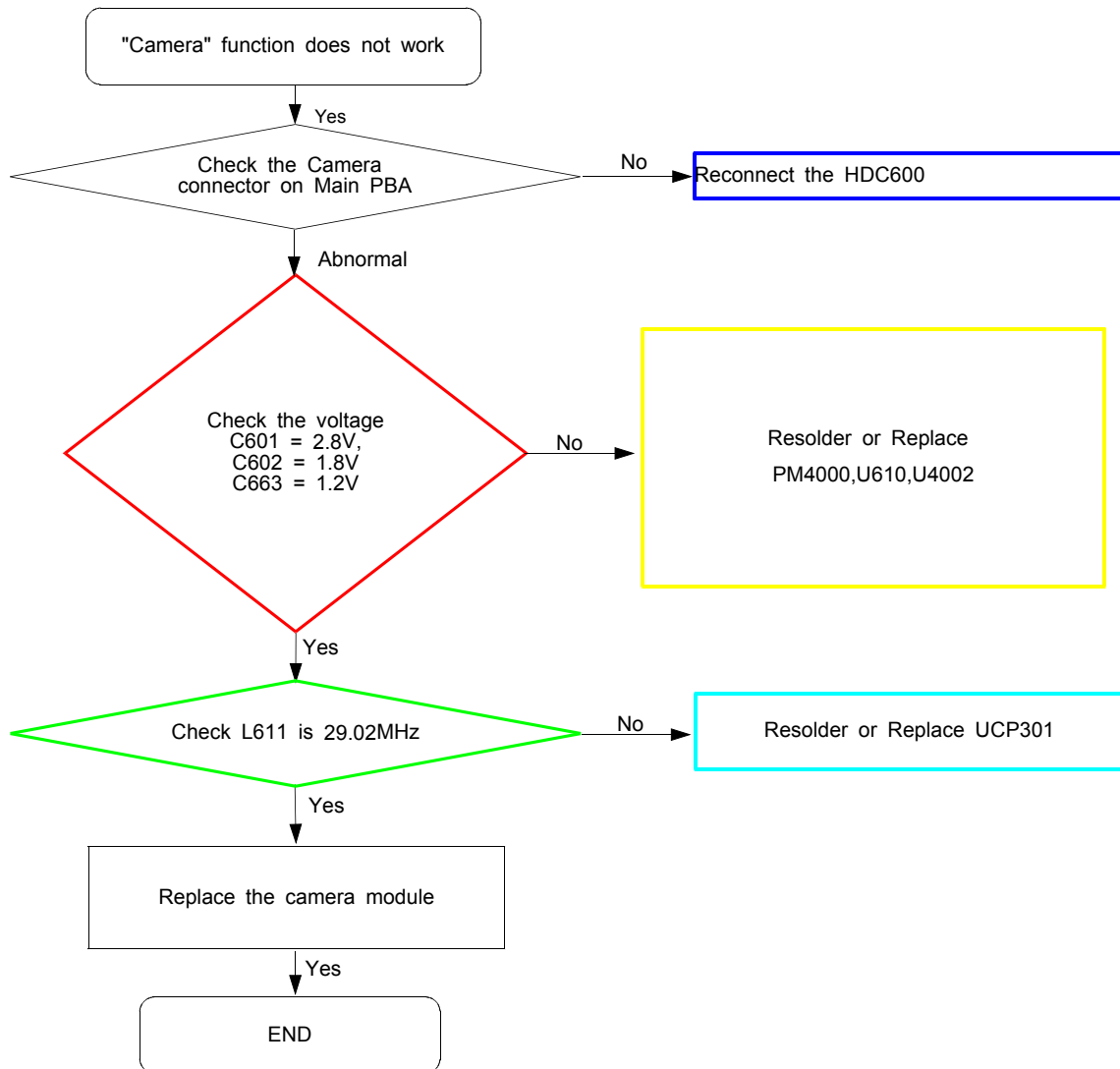
8-3-13. LCD

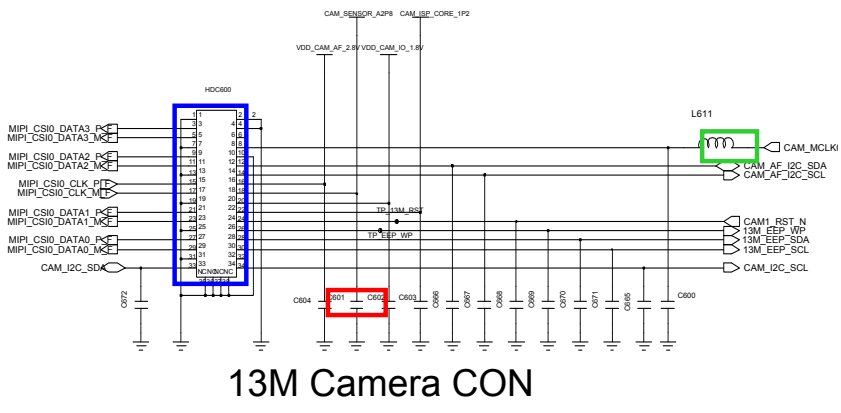




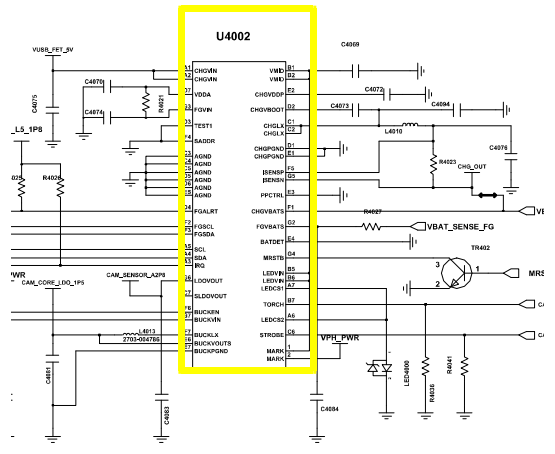
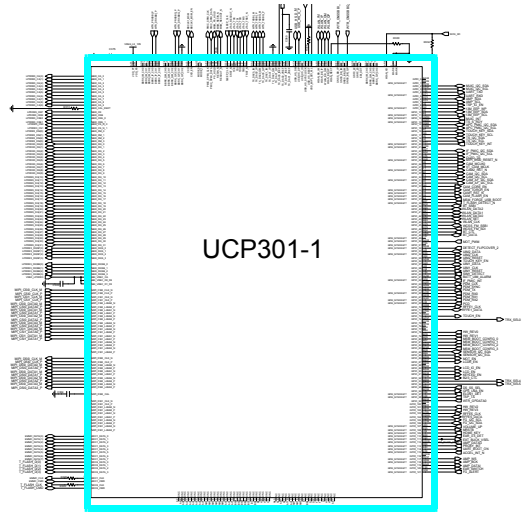
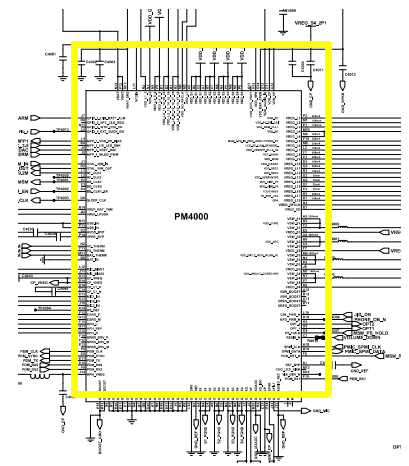
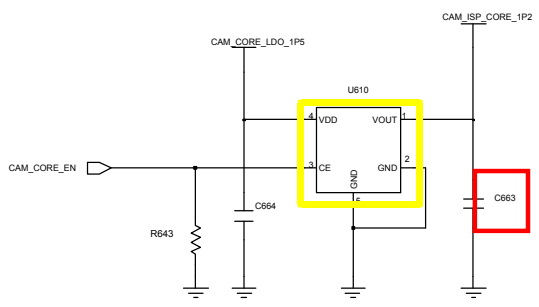
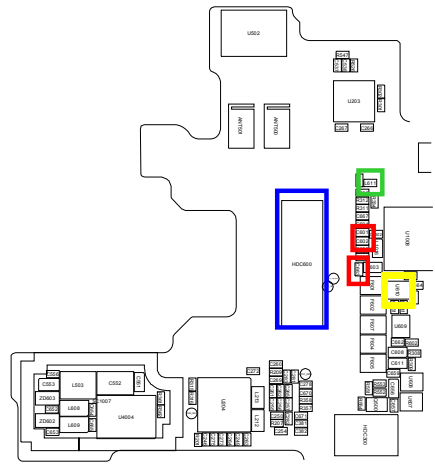


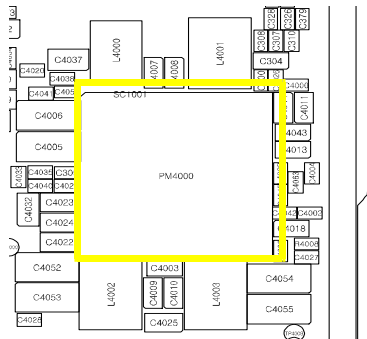
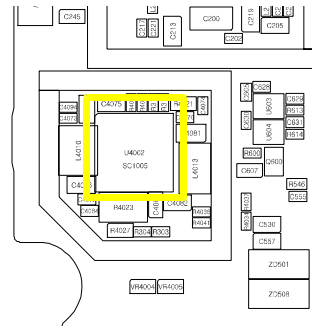
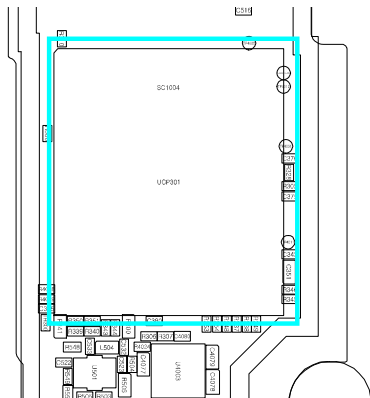
8-3-14. 13M CAM



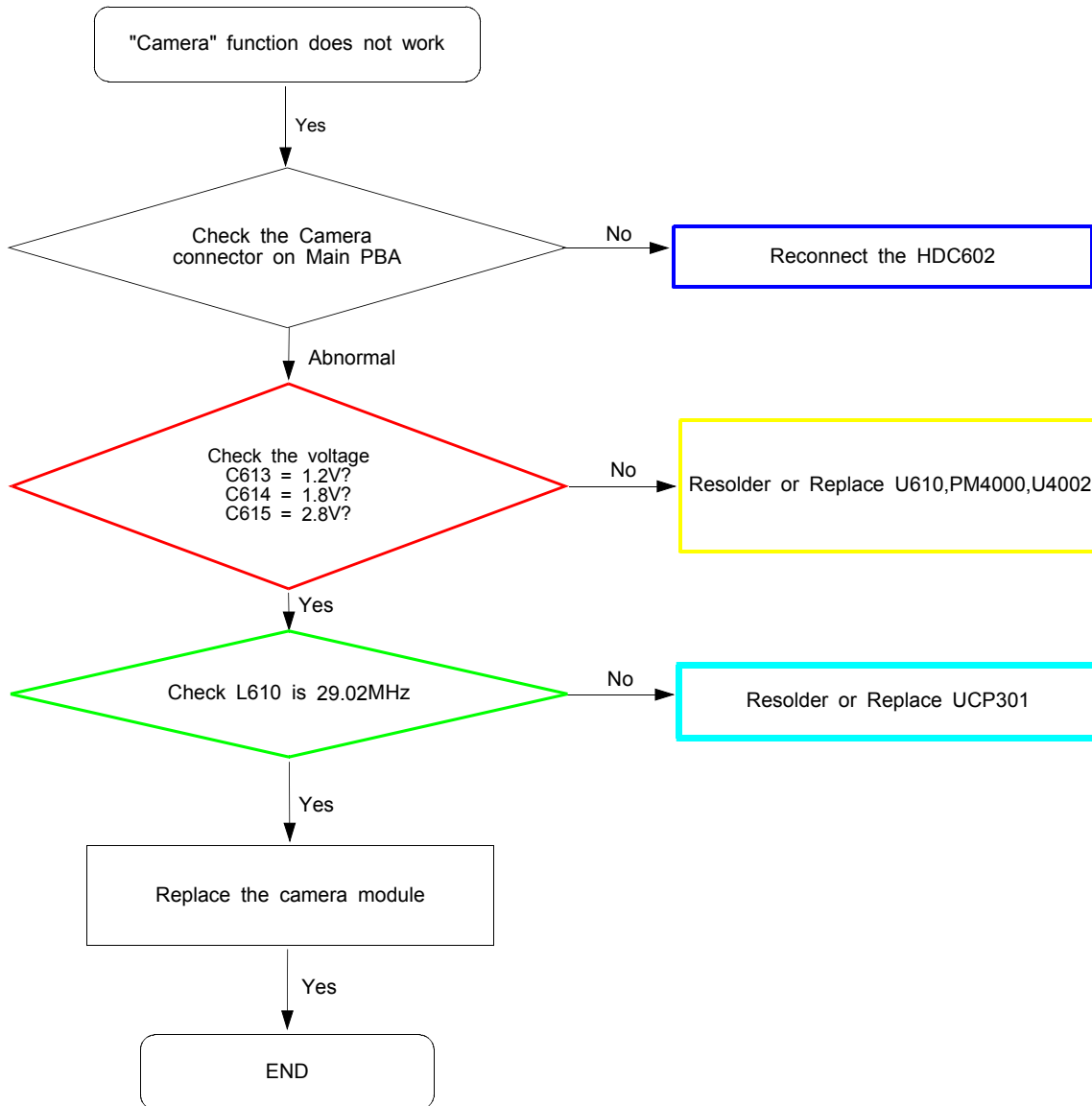


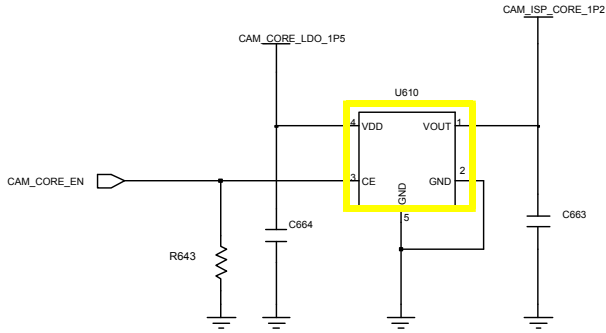
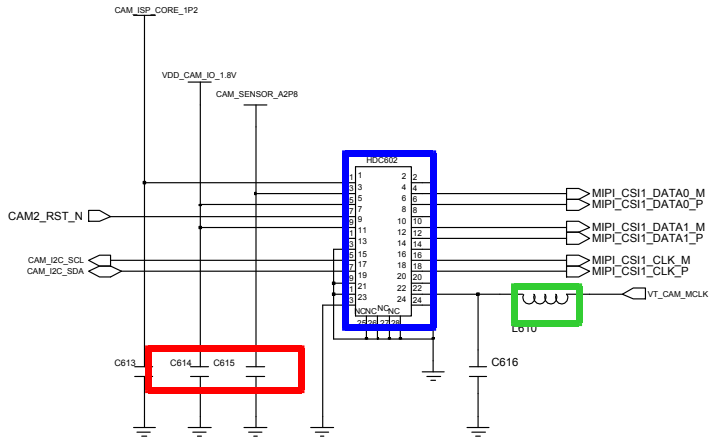
13M Camera CON

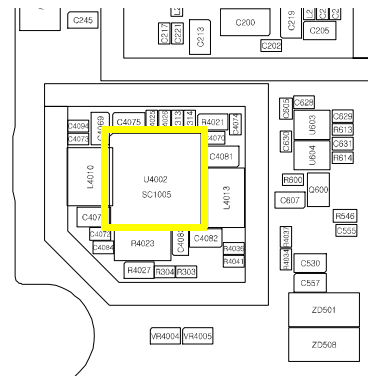
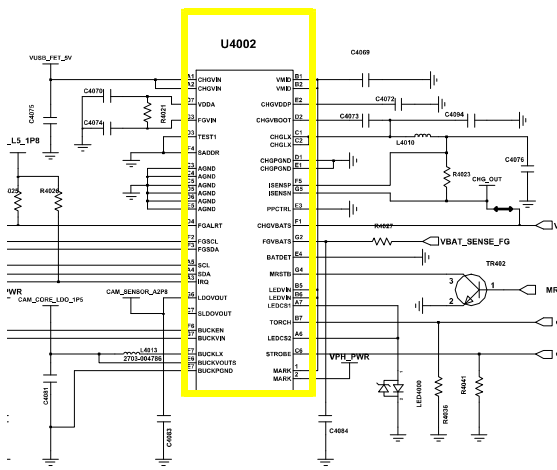
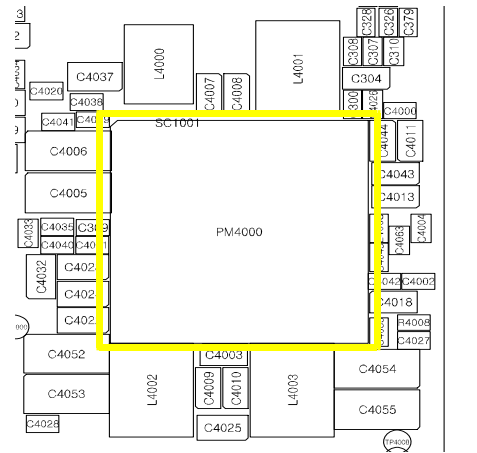
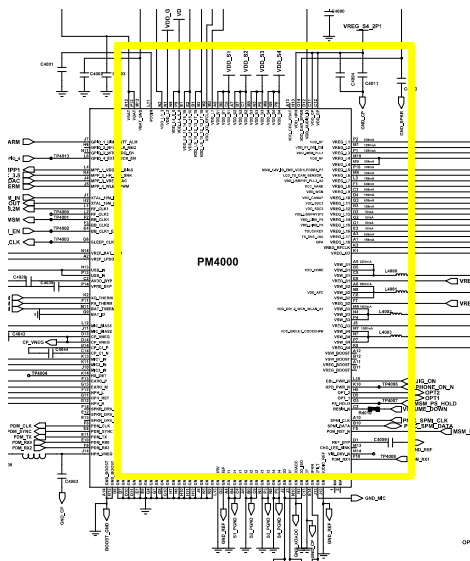
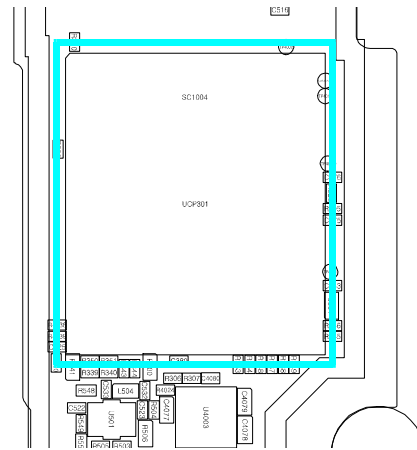
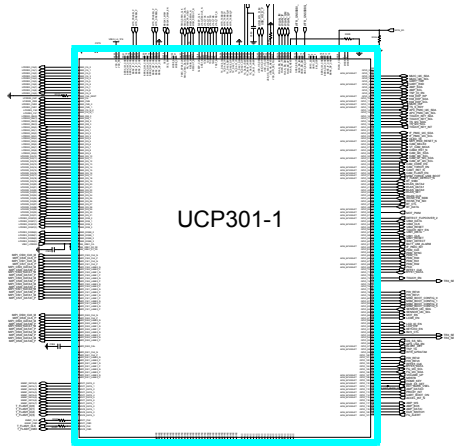




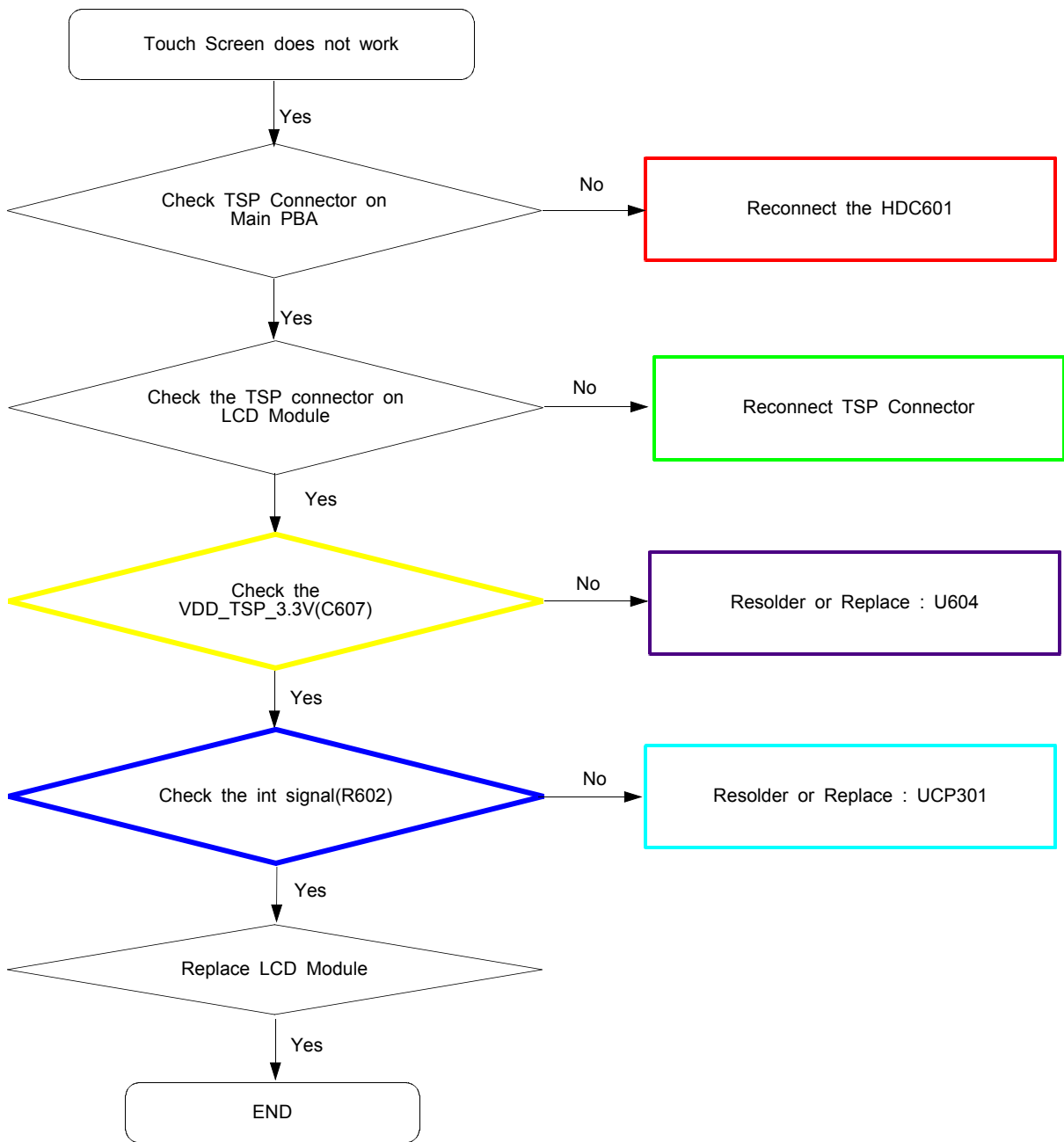
8-3-15. 5M CAM

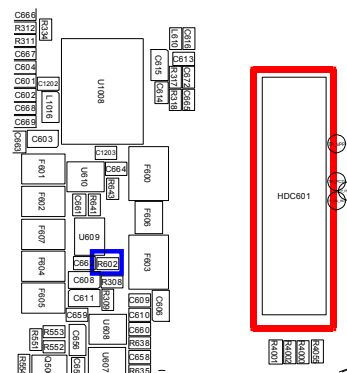
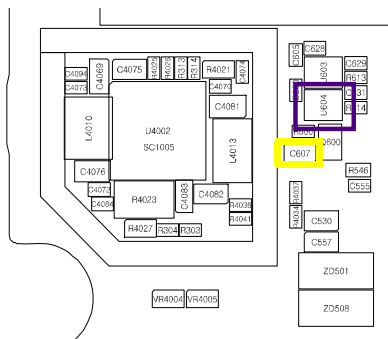
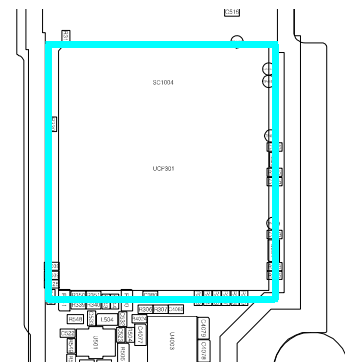
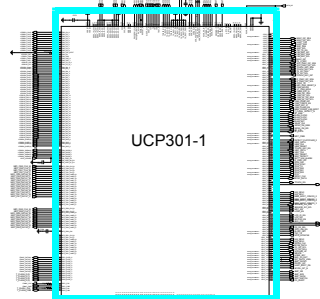
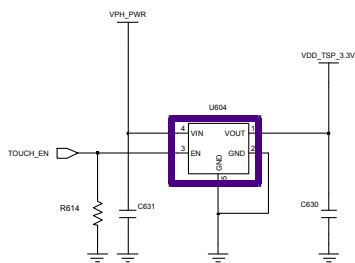
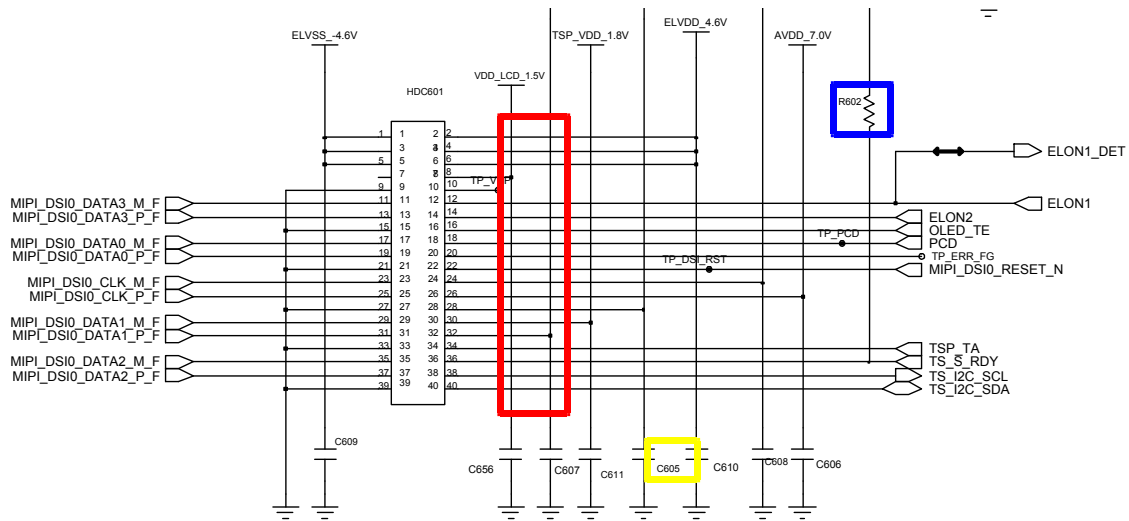




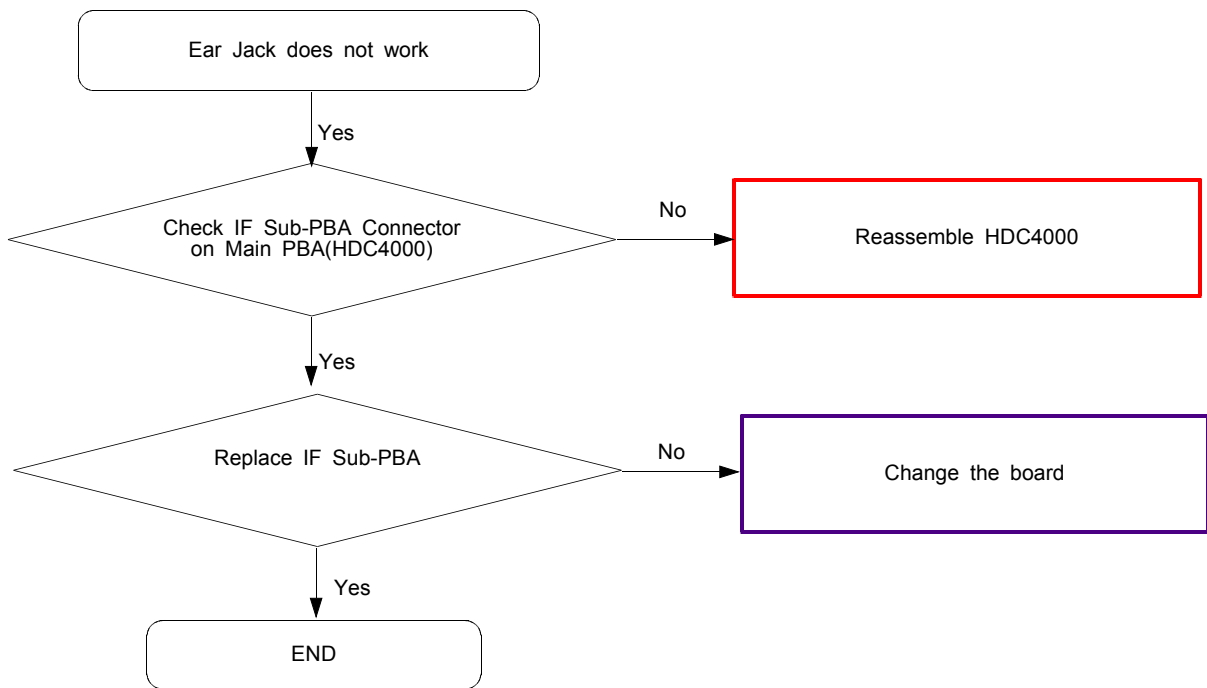


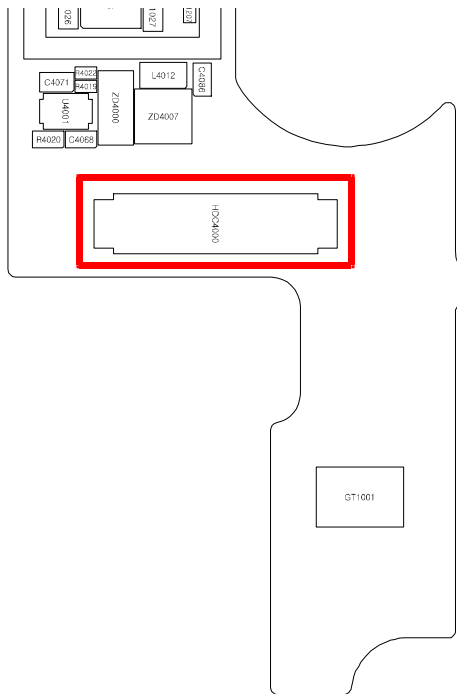
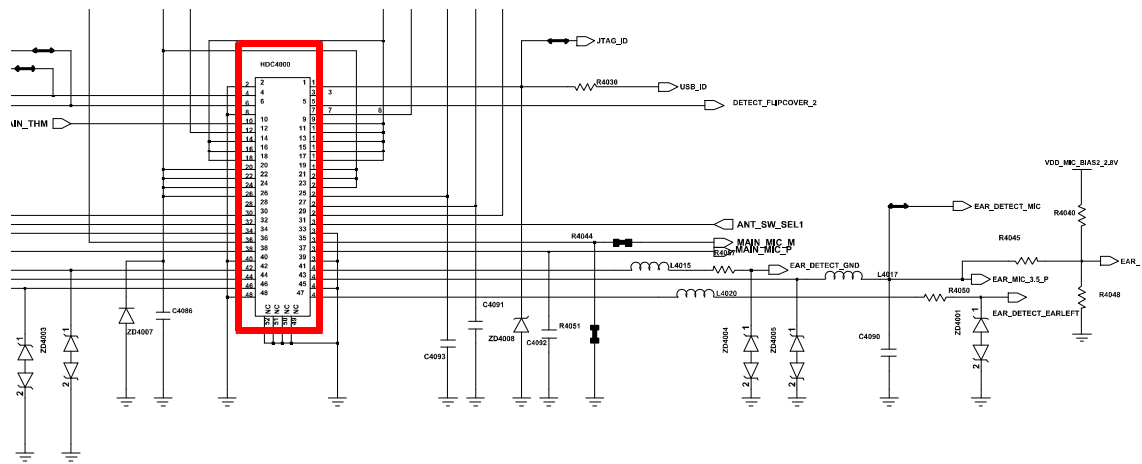
8-3-16. TSP



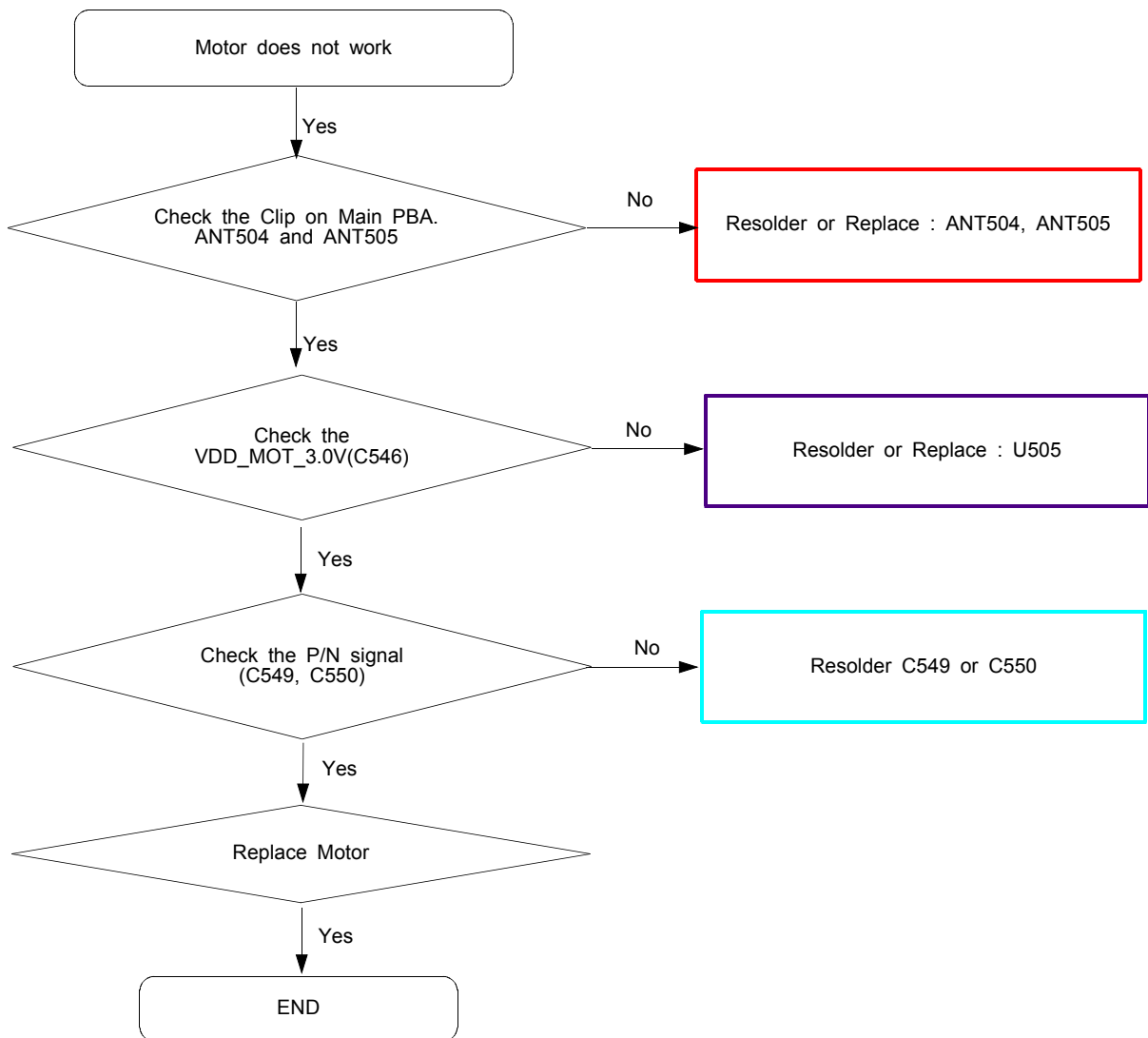


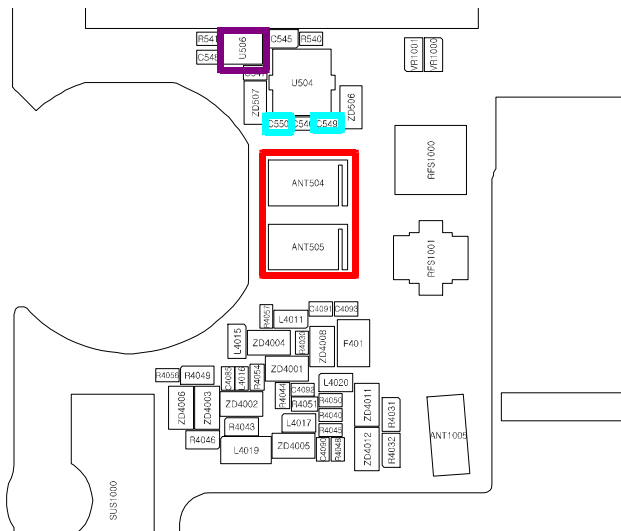
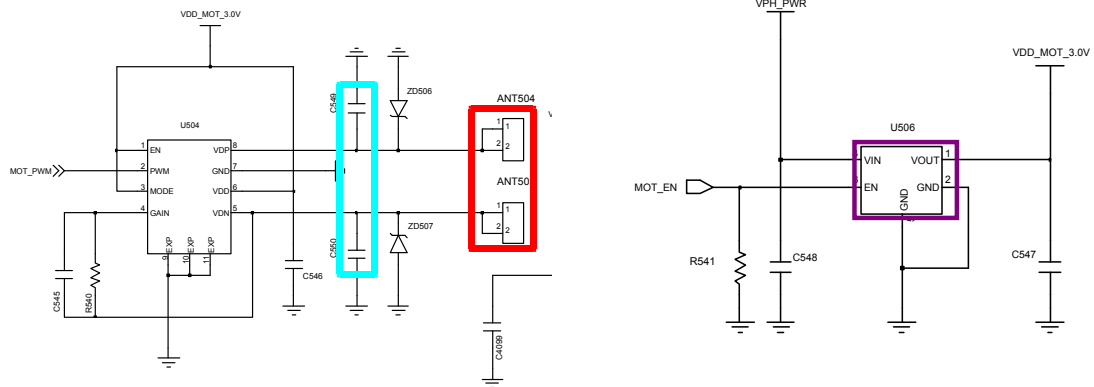
8-3-17. Ear Jack



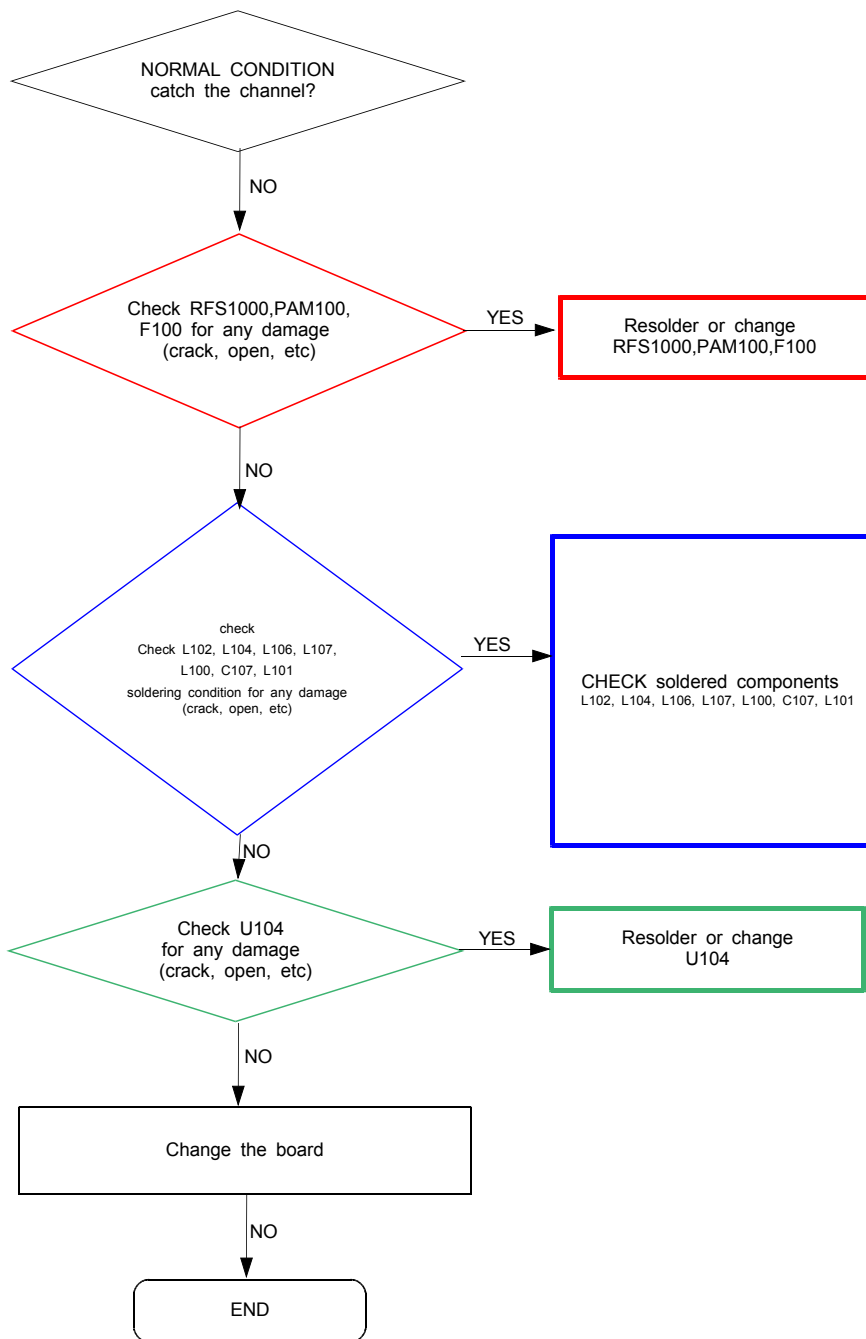


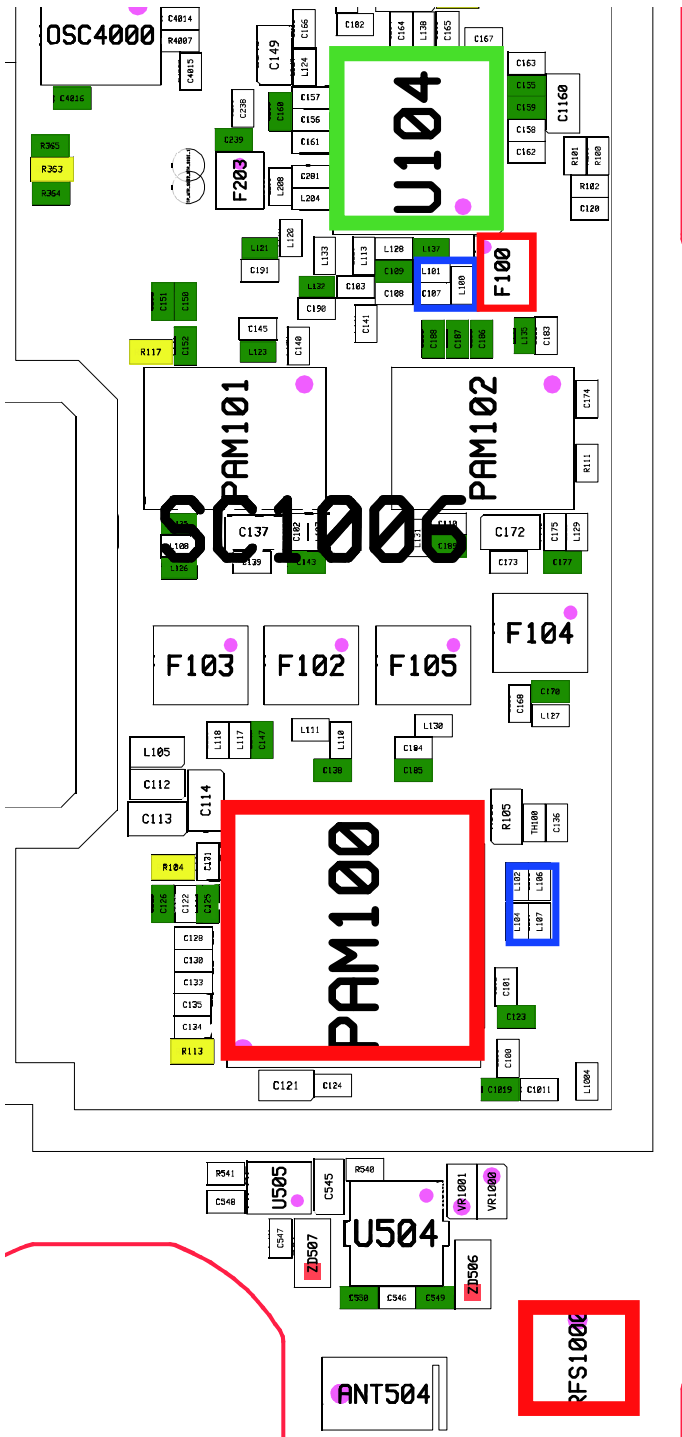
8-3-18. Motor



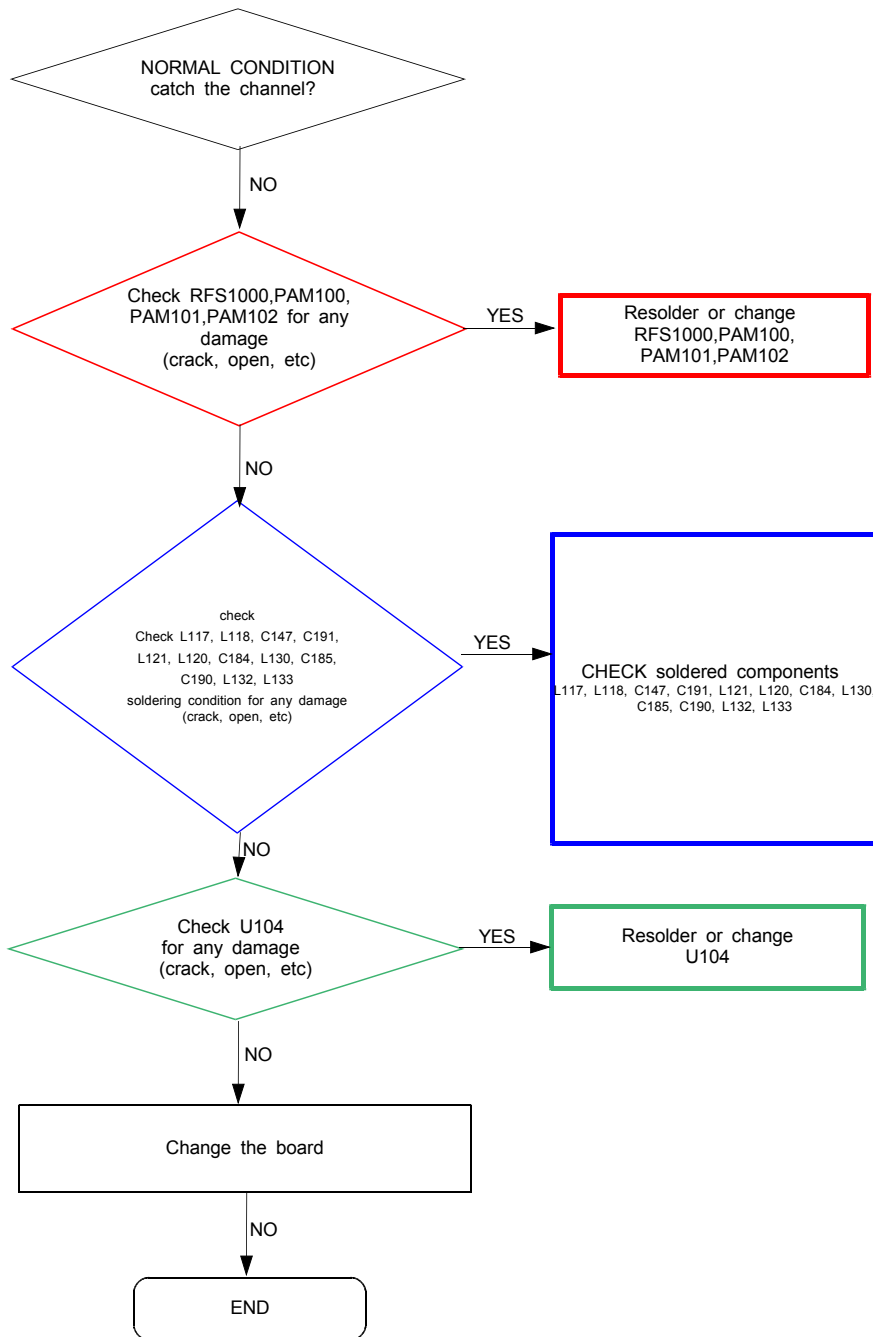


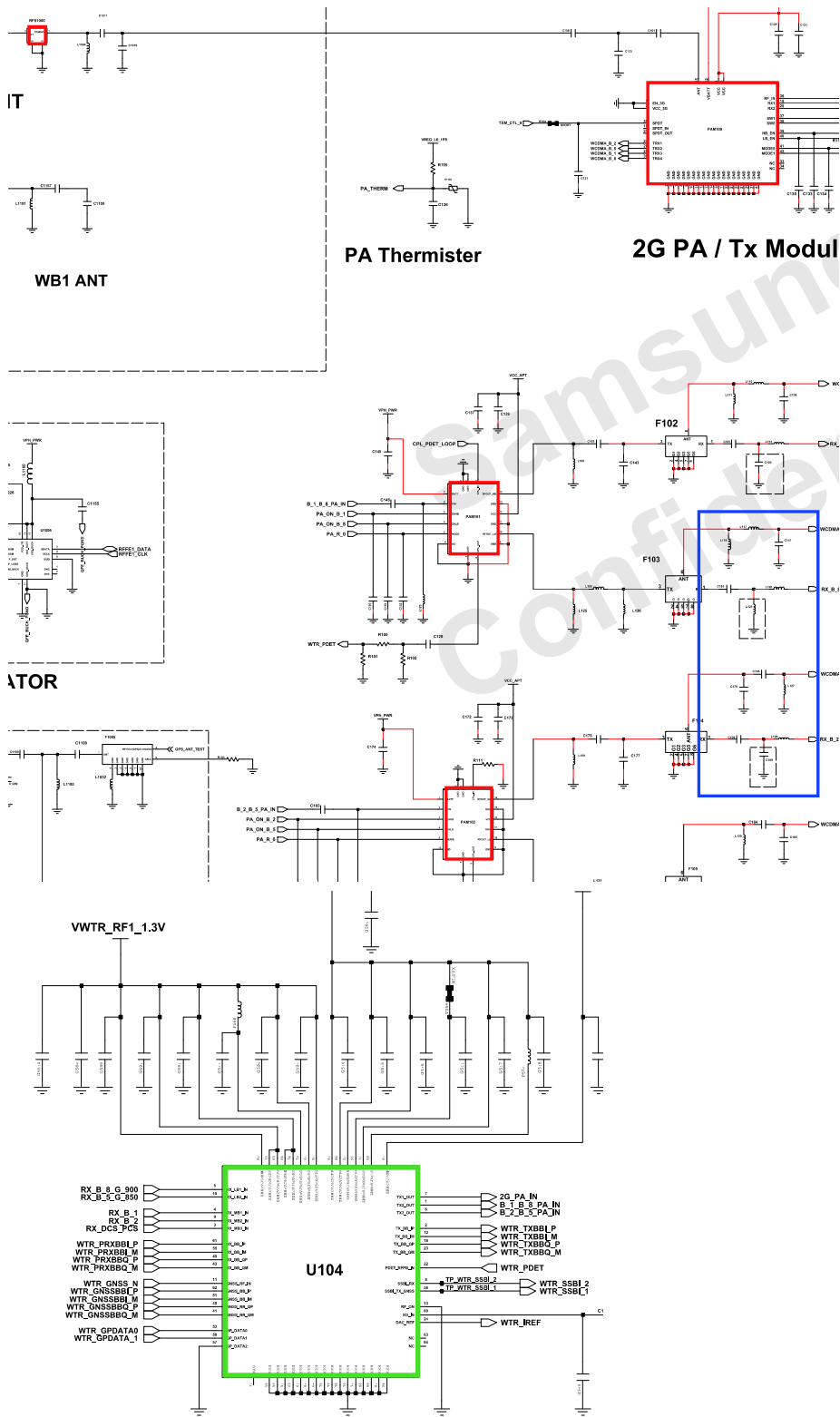
8-3-19. GSM 850,900 Rx

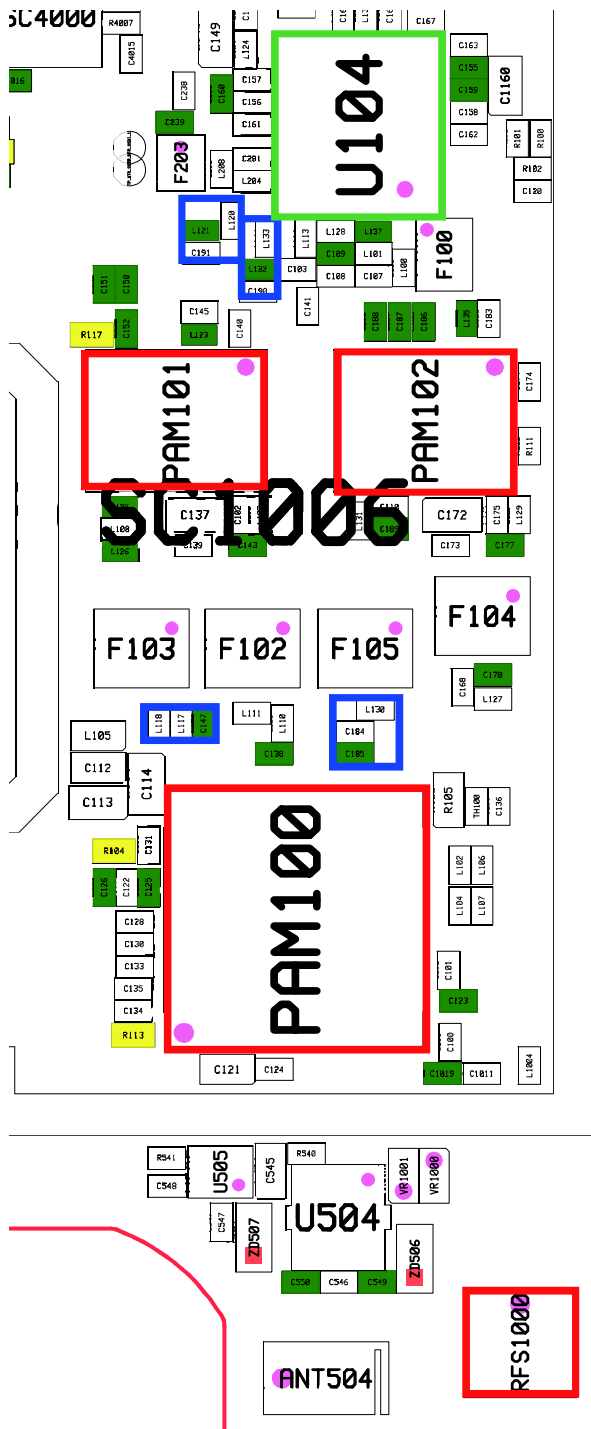




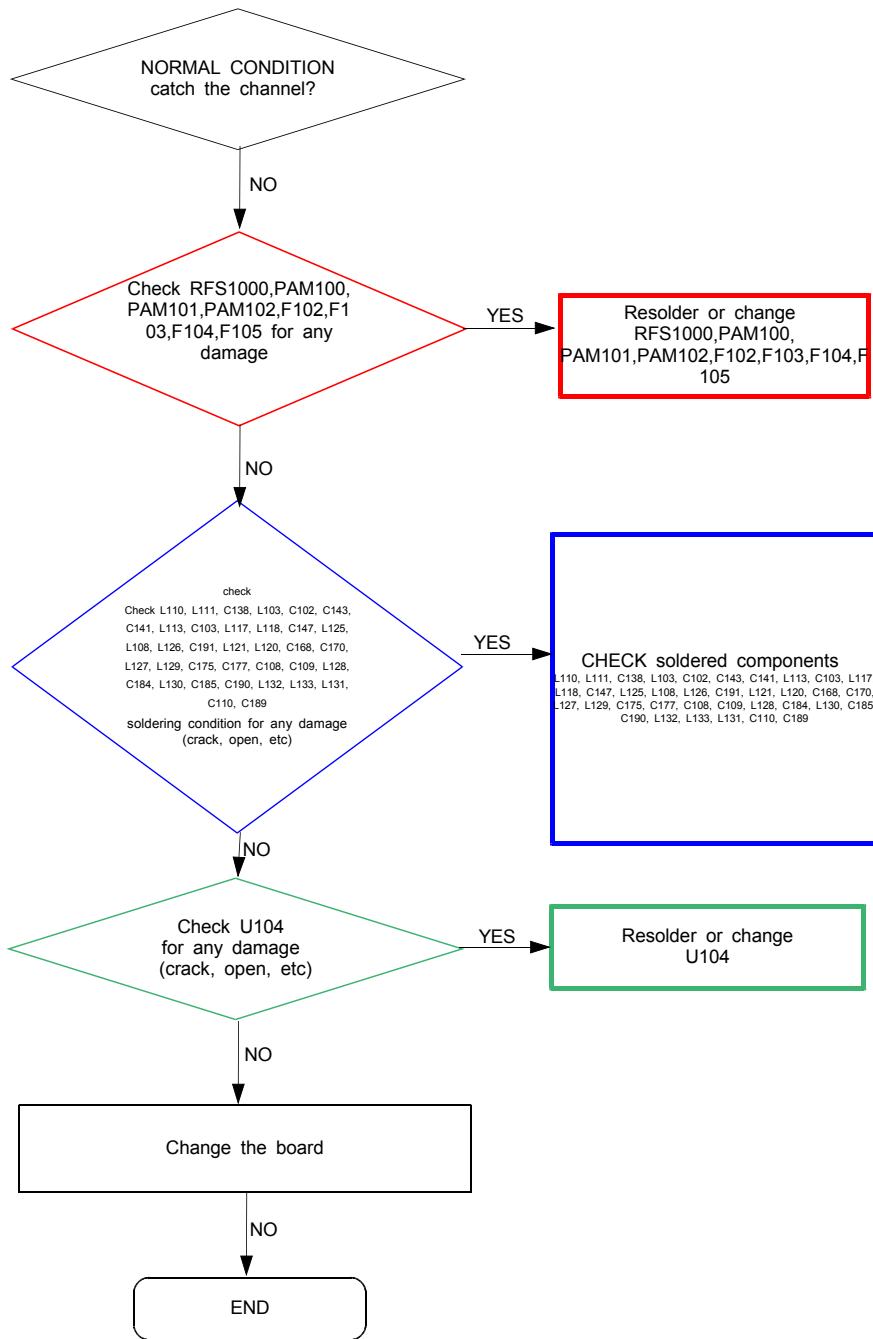
8-3-20. GSM 1800, 1900 Rx

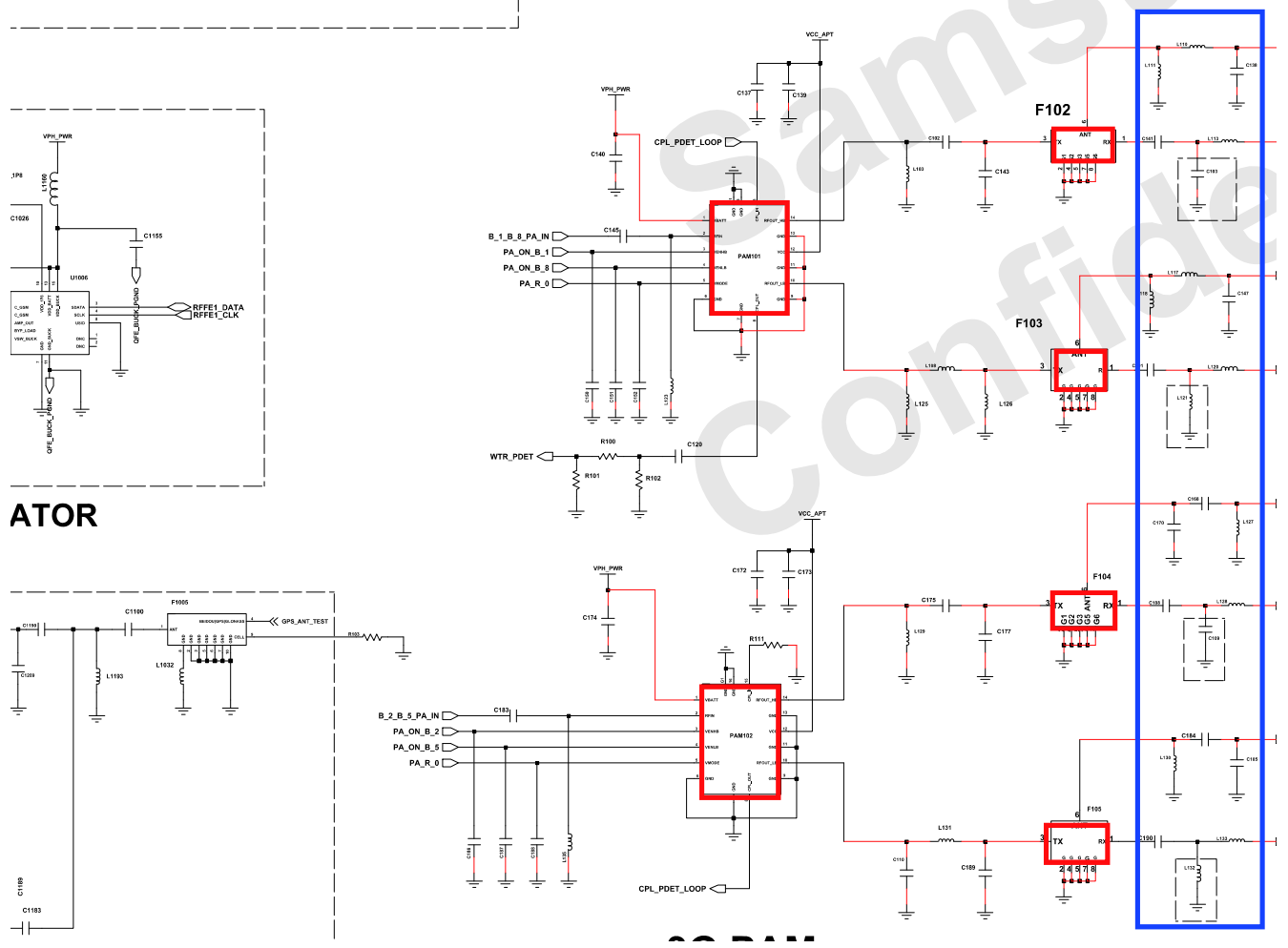
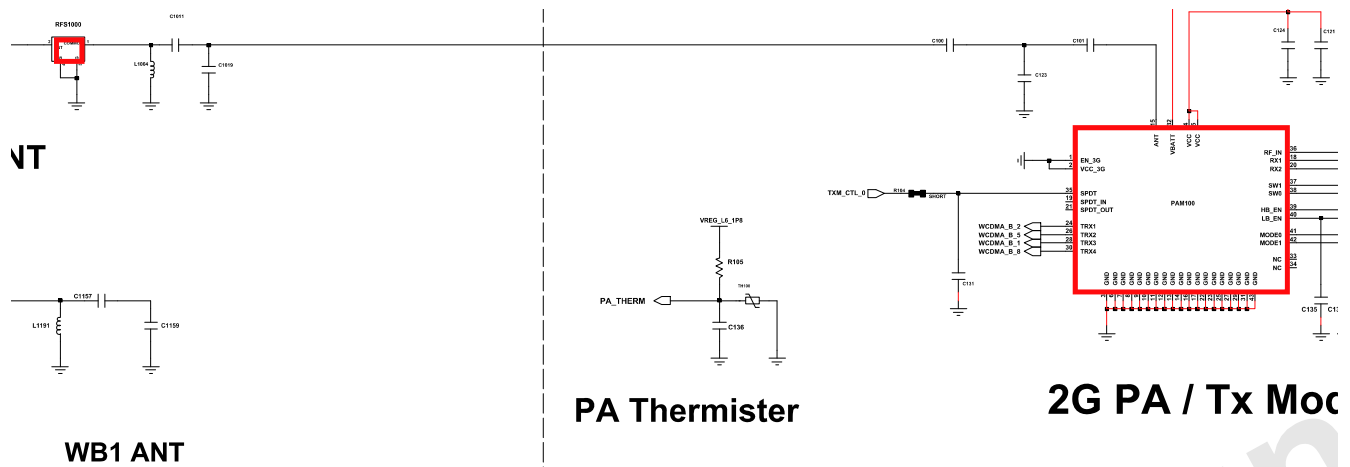


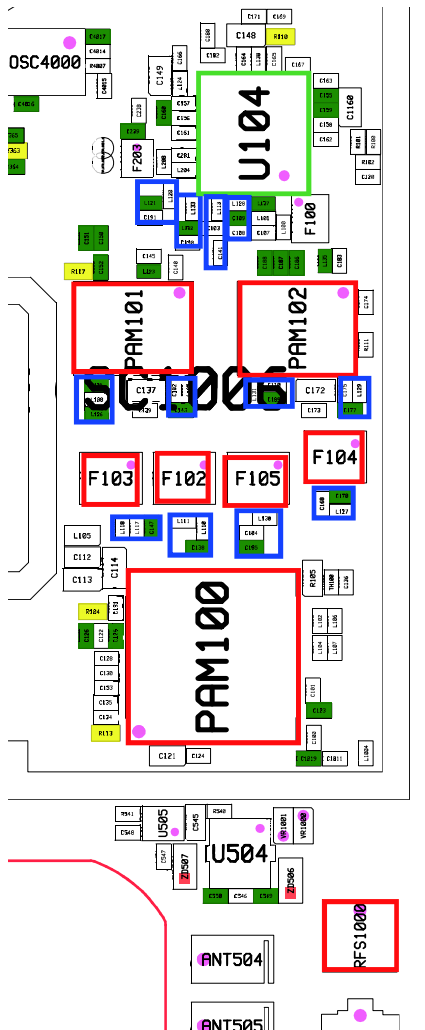
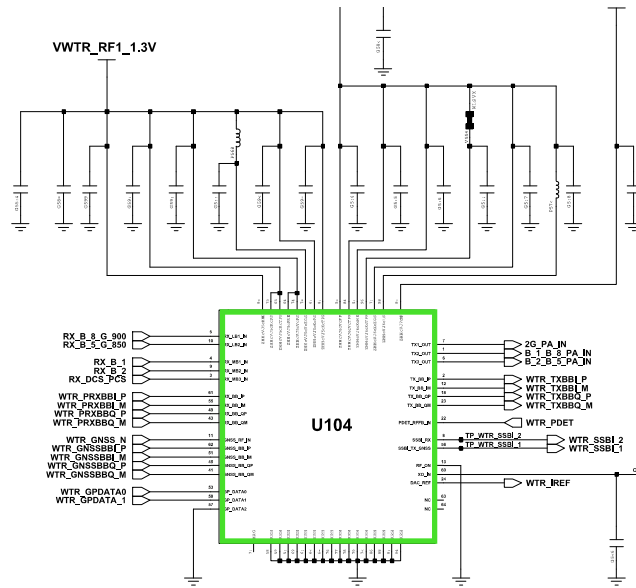




8-3-21. WCDMA B1,B2,B5,B8





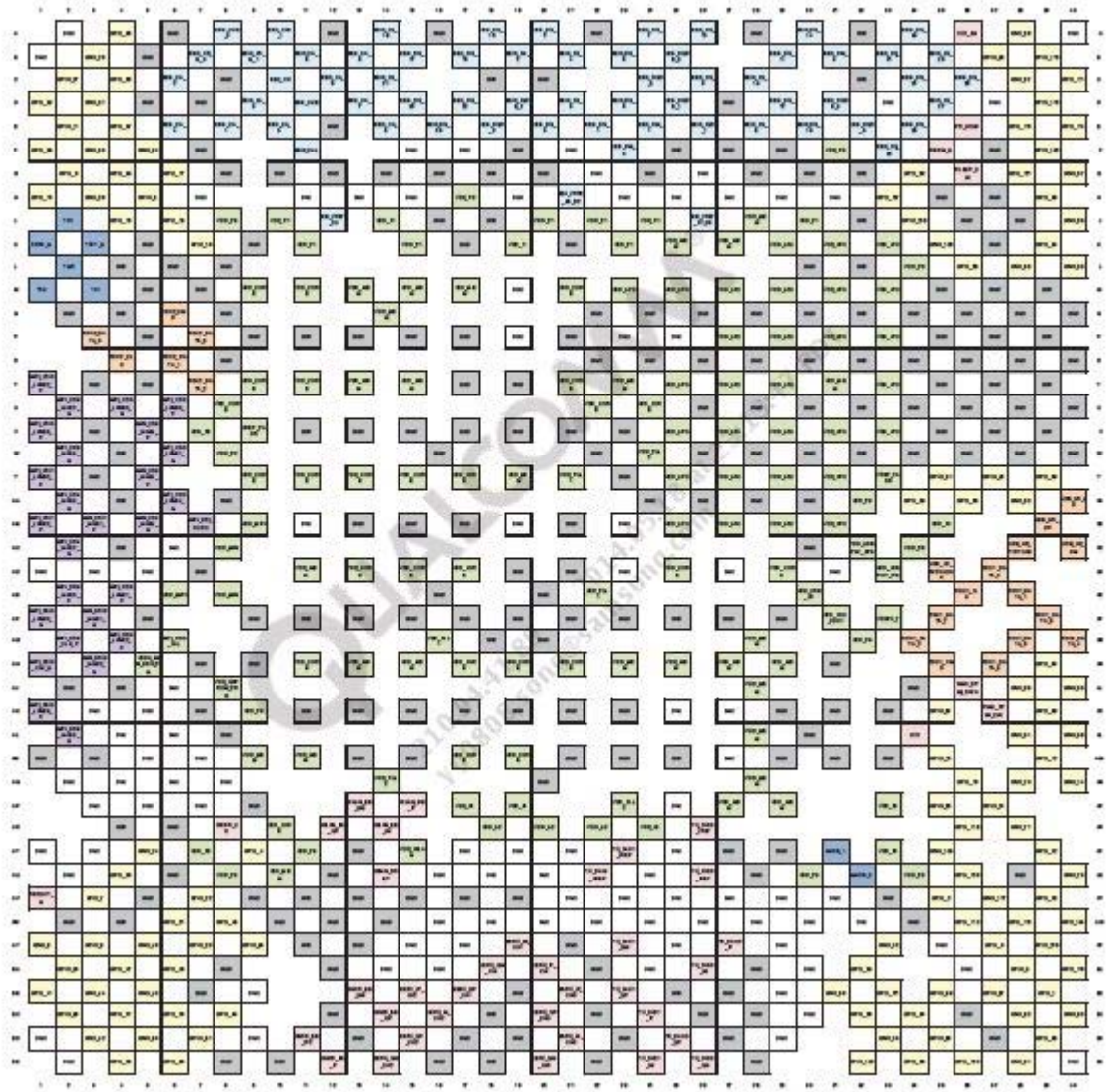


-NC Point(Top View)

●: NC

	1	2	3	4	5	6	7	8	9	10	11	12	13	14
A														
B														
C	●													●
D	●							●	●	●	●	●	●	●
E	●	●	●	●	●	●	●	●	●	●	●	●	●	●
F	●					●	●							●
G	●					●	●							●
H	●					●	●							●
I	●					●	●							●
J	●					●	●							●
K	●					●	●							●
L	●					●	●							●
M	●					●	●							●
N	●					●	●							●
P	●					●	●							●
R	●					●	●							●
T	●					●	●							●
U	●					●	●							●
V	●					●	●							●
W	●					●	●							●
Y	●					●	●							●
AA						●	●							
AB						●	●							

UME500



UCP301

	<u>1</u>	<u>2</u>	<u>3</u>	<u>4</u>	<u>5</u>	<u>6</u>	<u>7</u>	<u>8</u>	<u>9</u>	<u>10</u>	<u>11</u>	<u>12</u>	<u>13</u>	<u>14</u>
<u>A</u>														
<u>B</u>														
<u>C</u>									●					
<u>D</u>								●	●					
<u>E</u>						●								
<u>F</u>				●		●								
<u>G</u>														
<u>H</u>	●			●					●					●
<u>J</u>									●					
<u>K</u>						●	●					●		
<u>L</u>					●	●	●		●					
<u>M</u>														●
<u>N</u>														
<u>P</u>											●			

PM4000