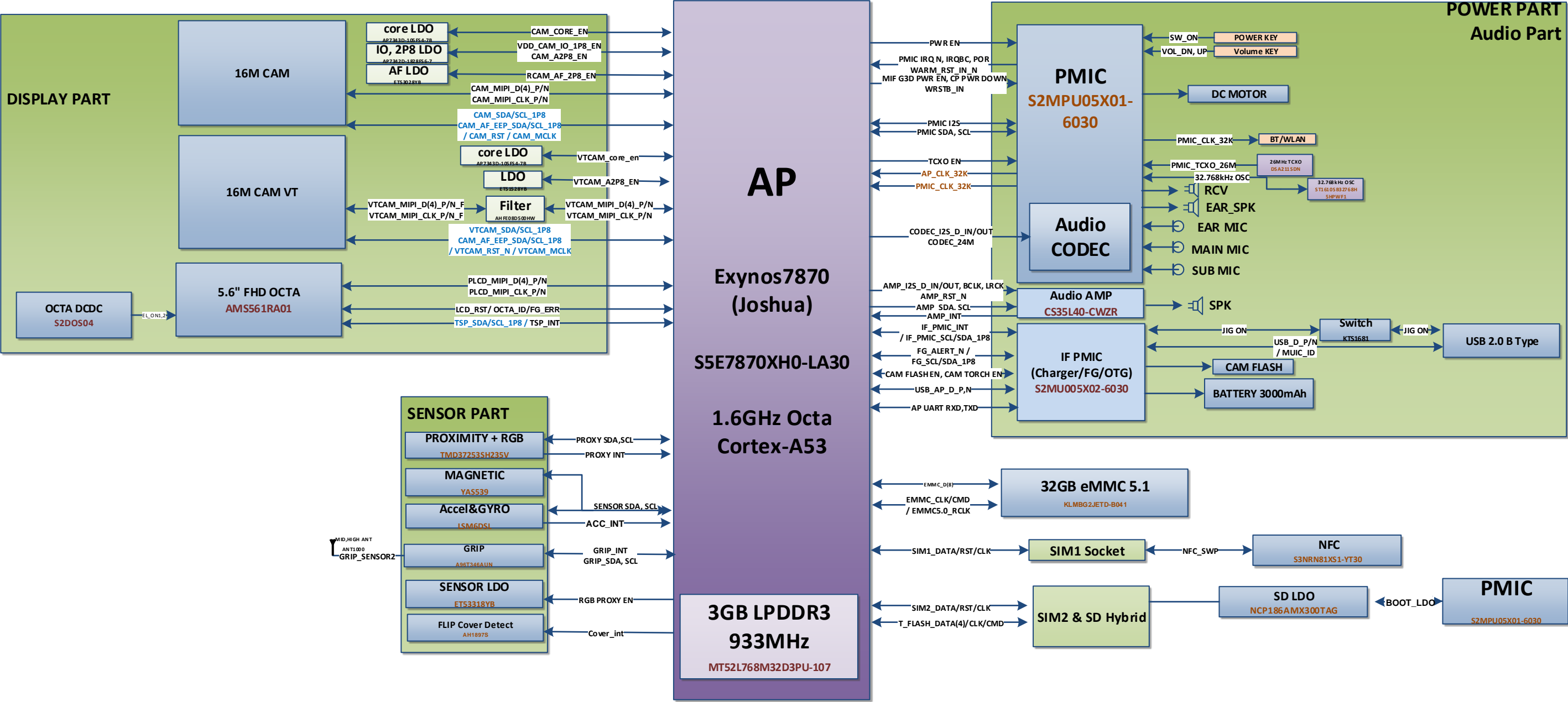


# SM-A600FN/DS Block Diagram

**Confidential**

SM - A600FN/F/GN/G  
Common



**SM-A600FN**  
 LTE 1/3/5/7/8/20/38/40 TX / PRX & DRX  
 WCDMA 1/2/5/8 TX / PRX & DRX  
 GSM 850/900/1800/1900 TX / PRX & DRX

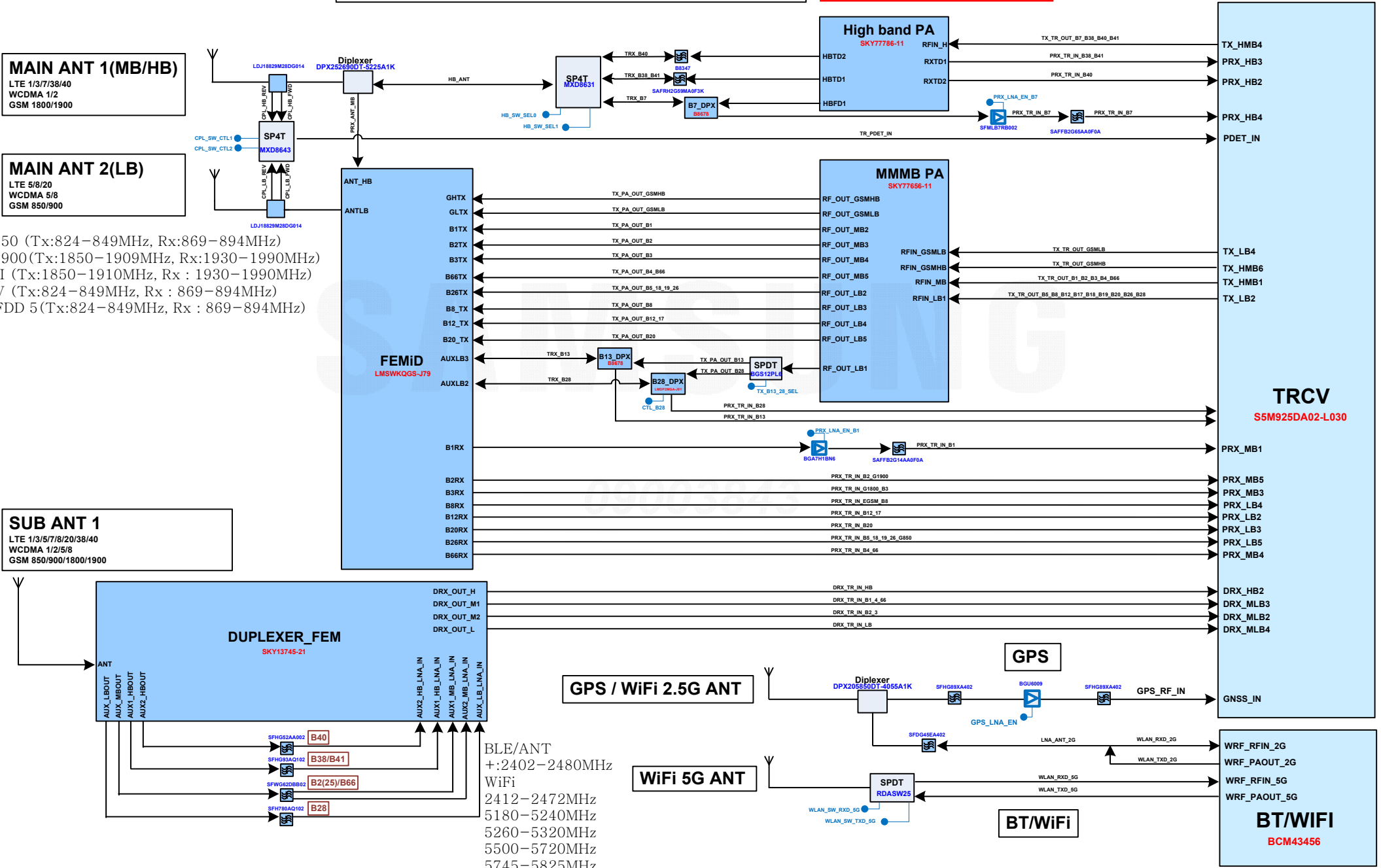
**SM - A600FN/F/GN/G**  
 Common

**MAIN ANT 1(MB/HB)**  
 LTE 1/3/7/38/40  
 WCDMA 1/2  
 GSM 1800/1900

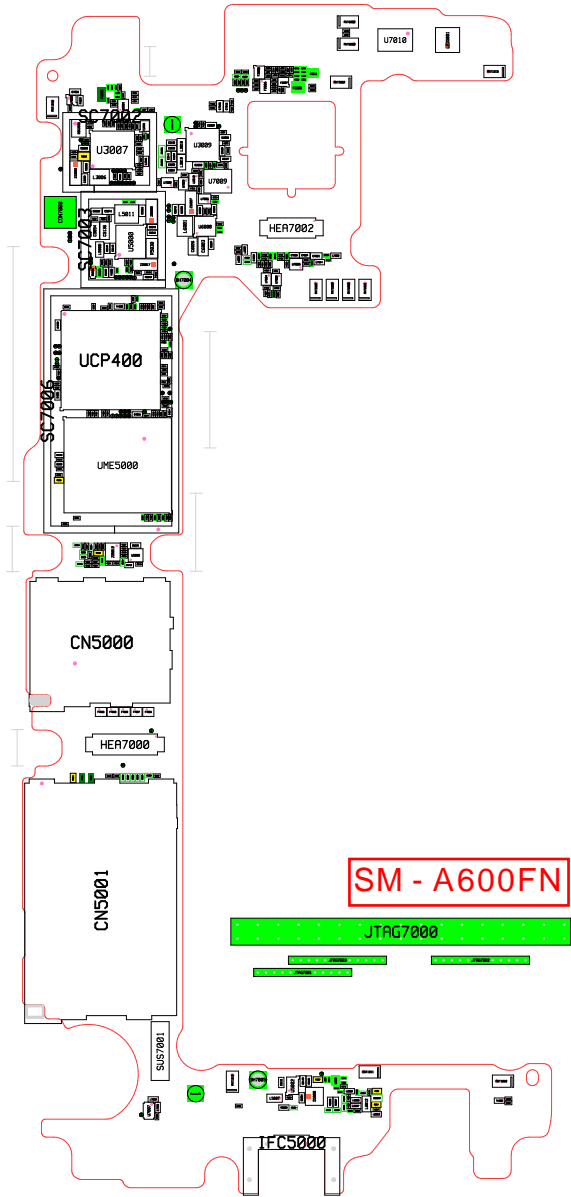
**MAIN ANT 2(LB)**  
 LTE 5/8/20  
 WCDMA 5/8  
 GSM 850/900

**SUB ANT 1**  
 LTE 1/3/5/7/8/20/38/40  
 WCDMA 1/2/5/8  
 GSM 850/900/1800/1900

GSM850 (Tx:824-849MHz, Rx:869-894MHz)  
 GSM1900(Tx:1850-1909MHz, Rx:1930-1990MHz)  
 FDD II (Tx:1850-1910MHz, Rx : 1930-1990MHz)  
 FDD V (Tx:824-849MHz, Rx : 869-894MHz)  
 LTE FDD 5(Tx:824-849MHz, Rx : 869-894MHz)



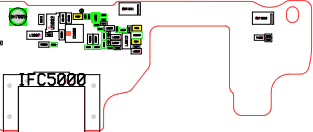
BLE/ANT  
 +:2402-2480MHz  
 WiFi  
 2412-2472MHz  
 5180-5240MHz  
 5260-5320MHz  
 5500-5720MHz  
 5745-5825MHz  
 NFC 13.56MHz



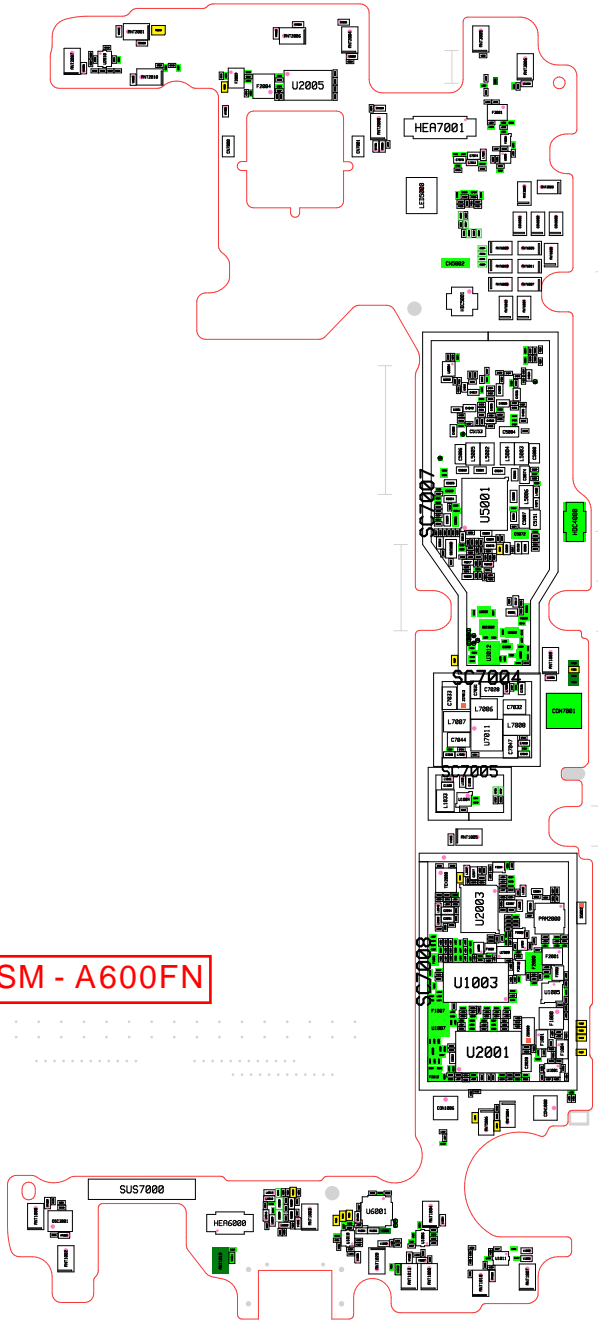
**SM - A600FN**

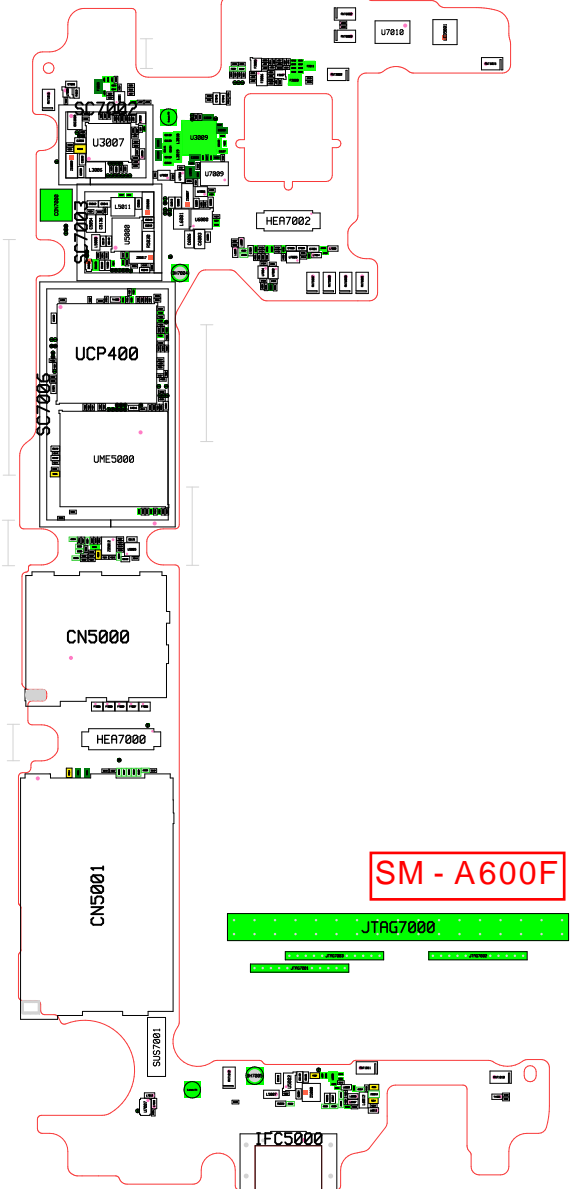
JTAG7000

PHONES



SM - A600FN





SC7002

U3007

U3009

U7010

U7009

HEA7002

SC7003

L5011

U5000

UCP400

UME500

SC7005

CN5000

HEA7000

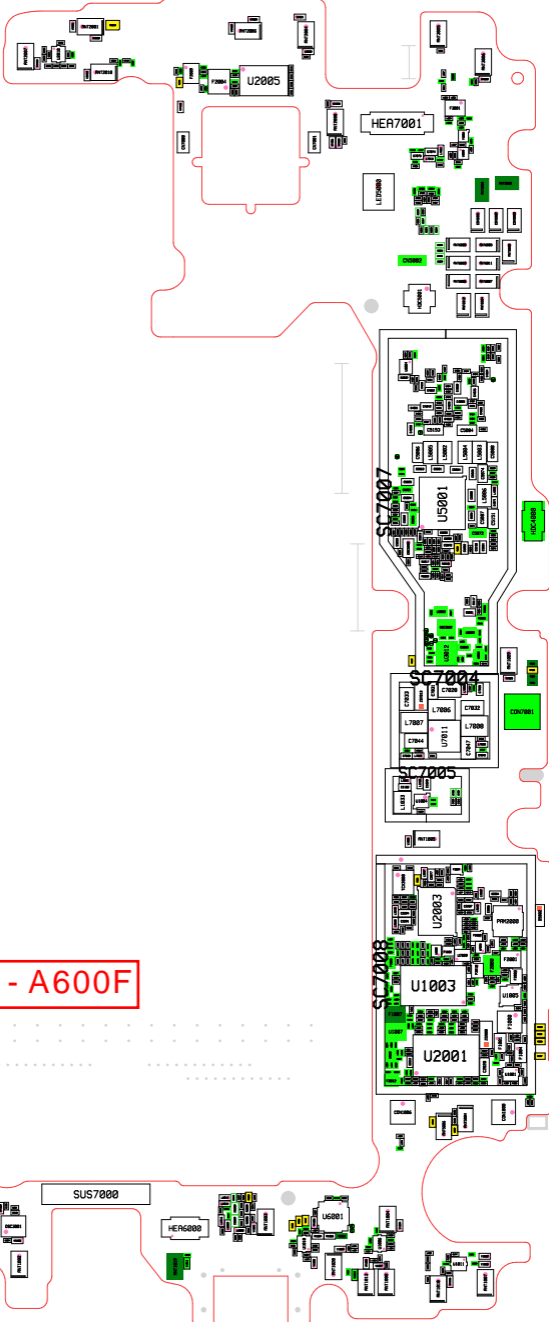
CN5001

SUS7001

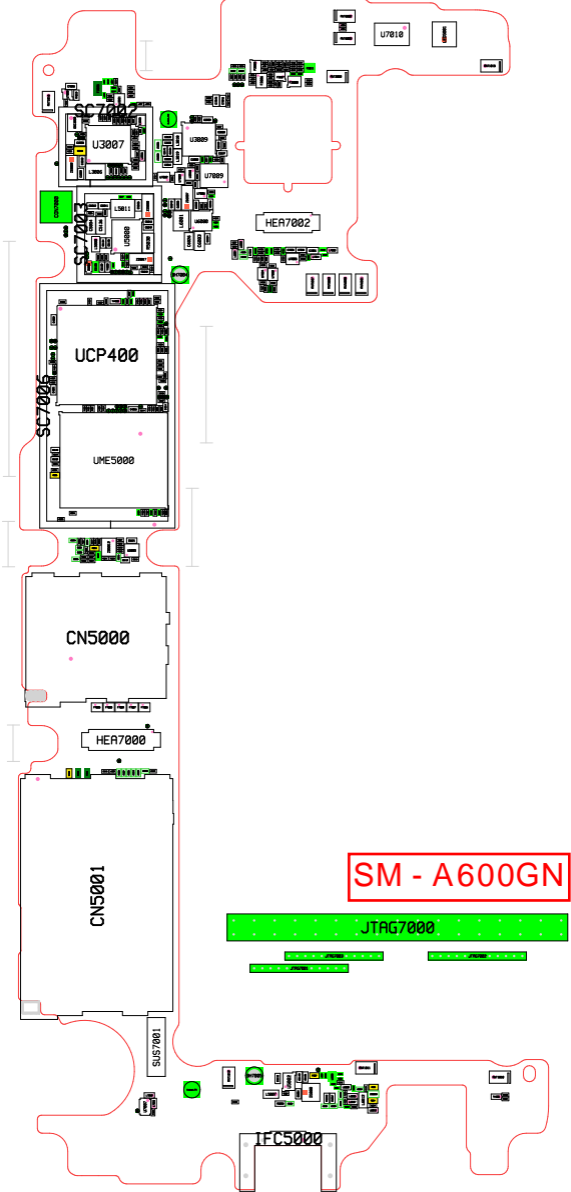
SM - A600F

JTAG7000

IFC5000



SM - A600F

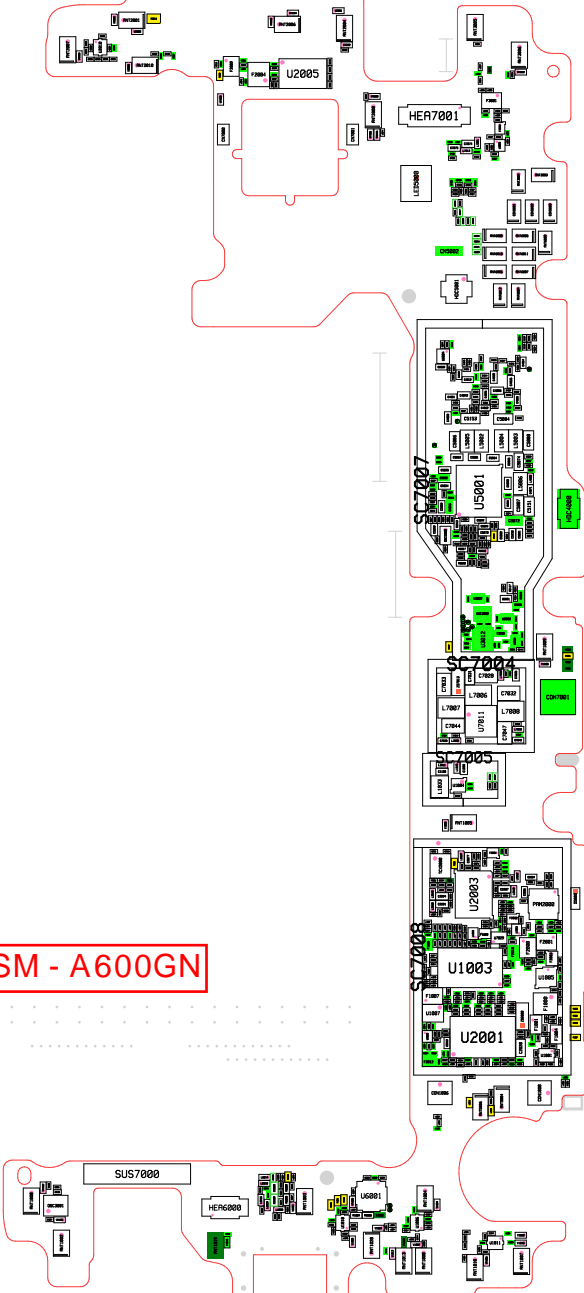


**SM - A600GN**

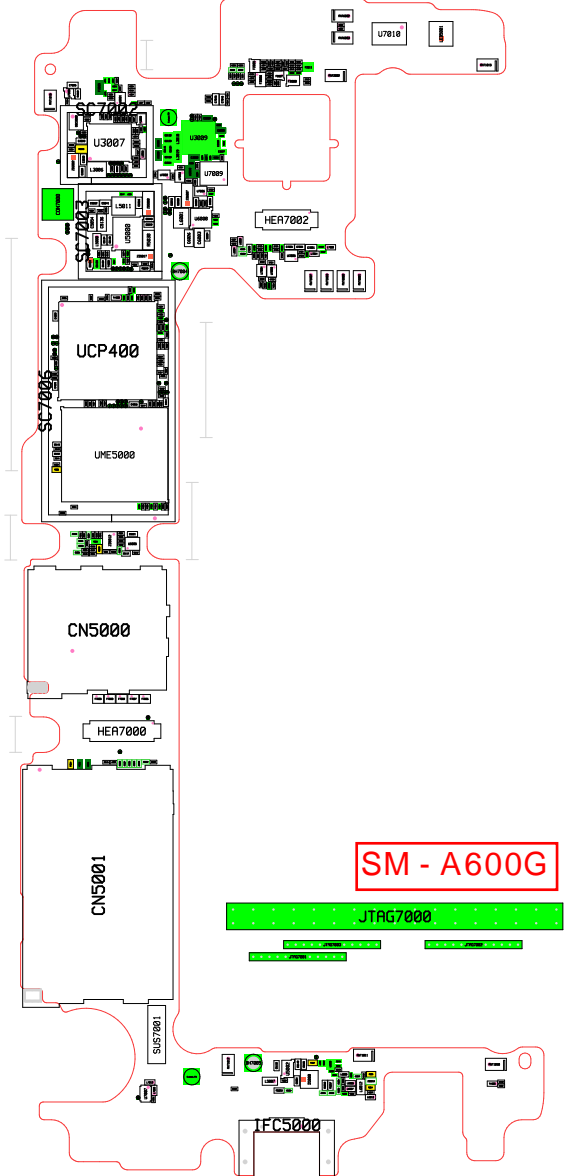
**JTAG7000**

**IFC5000**

SM - A600GN







**SM - A600G**

JTAG7000

JTAG7000

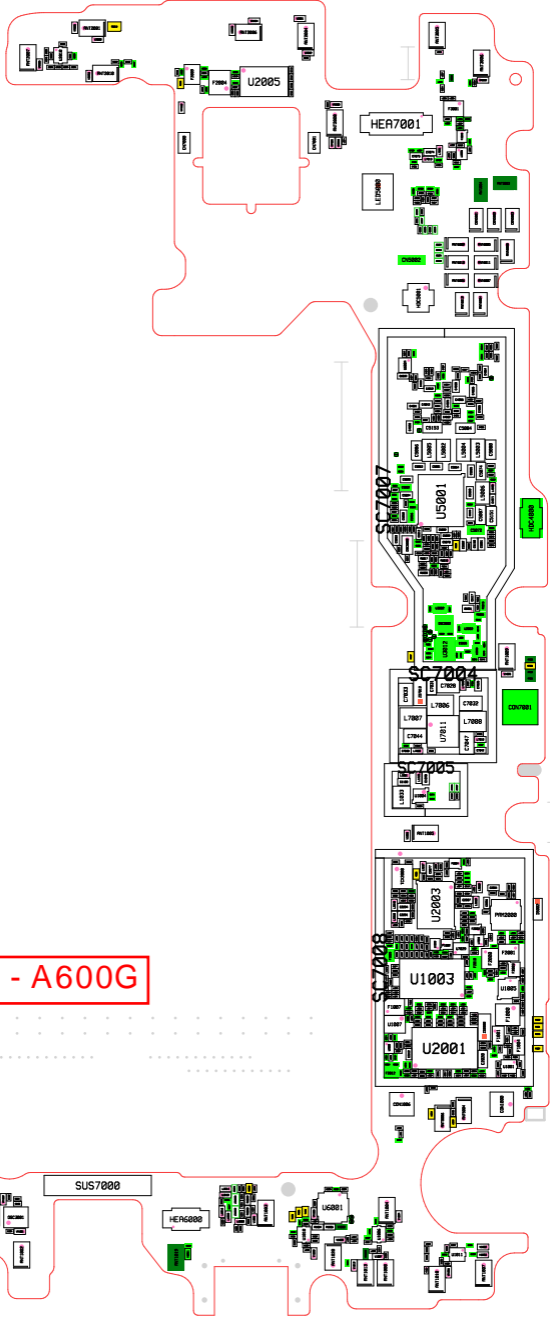
JTAG7000

JTAG7000

SUS7001

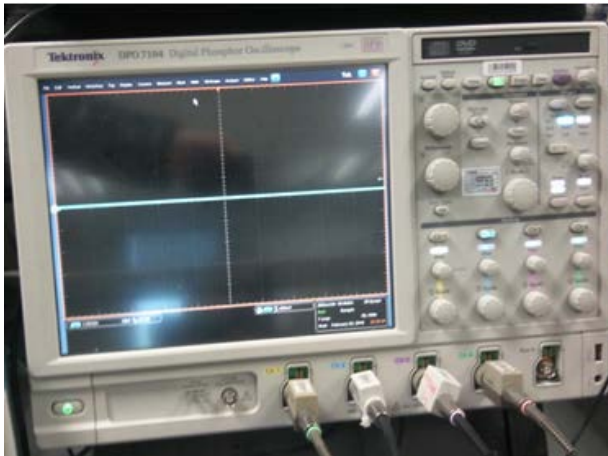
IFC5000

**SM - A600G**



## 8. Level 3 Repair

### 8-3. Flow chart of Troubleshooting.



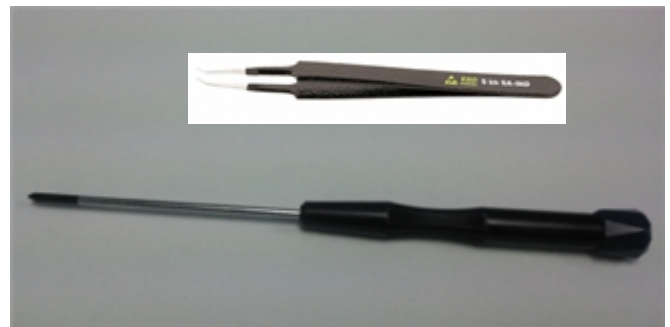
Oscilloscope



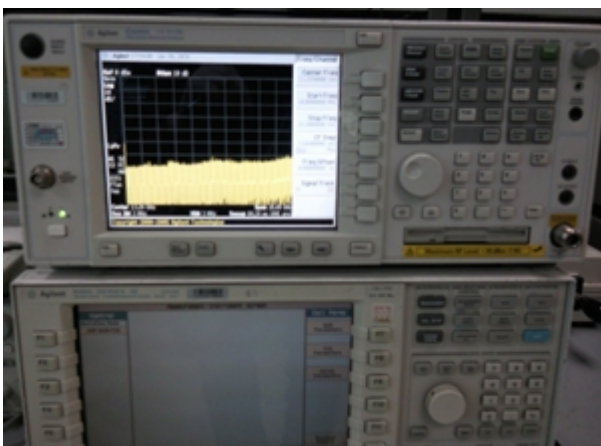
Digital Multimeter



Power Supply



+ driver, ESD Safe Tweezer



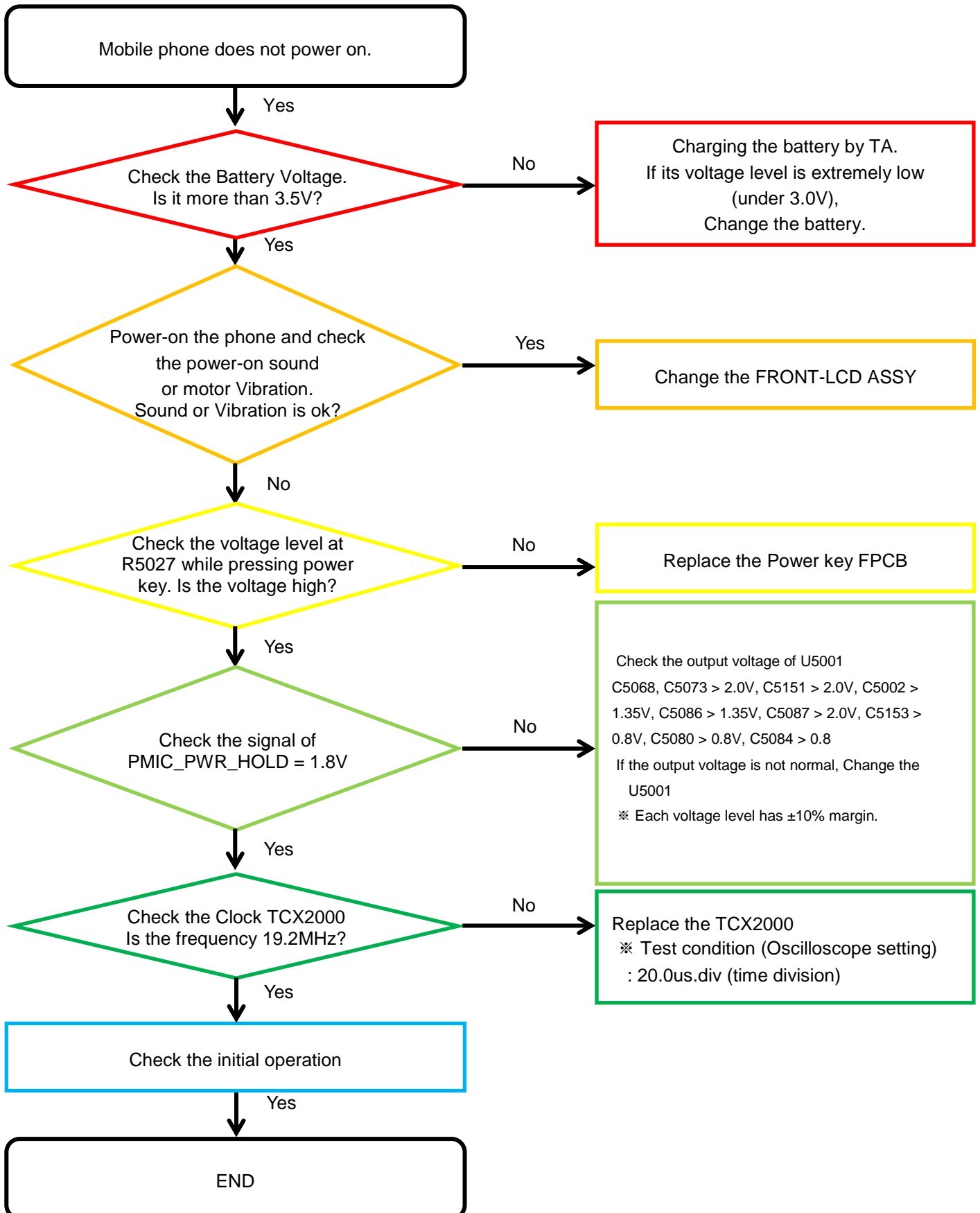
8960 & Spectrum Analyzer



Soldering iron

## 8. Level 3 Repair

### 8-4-1. Power On

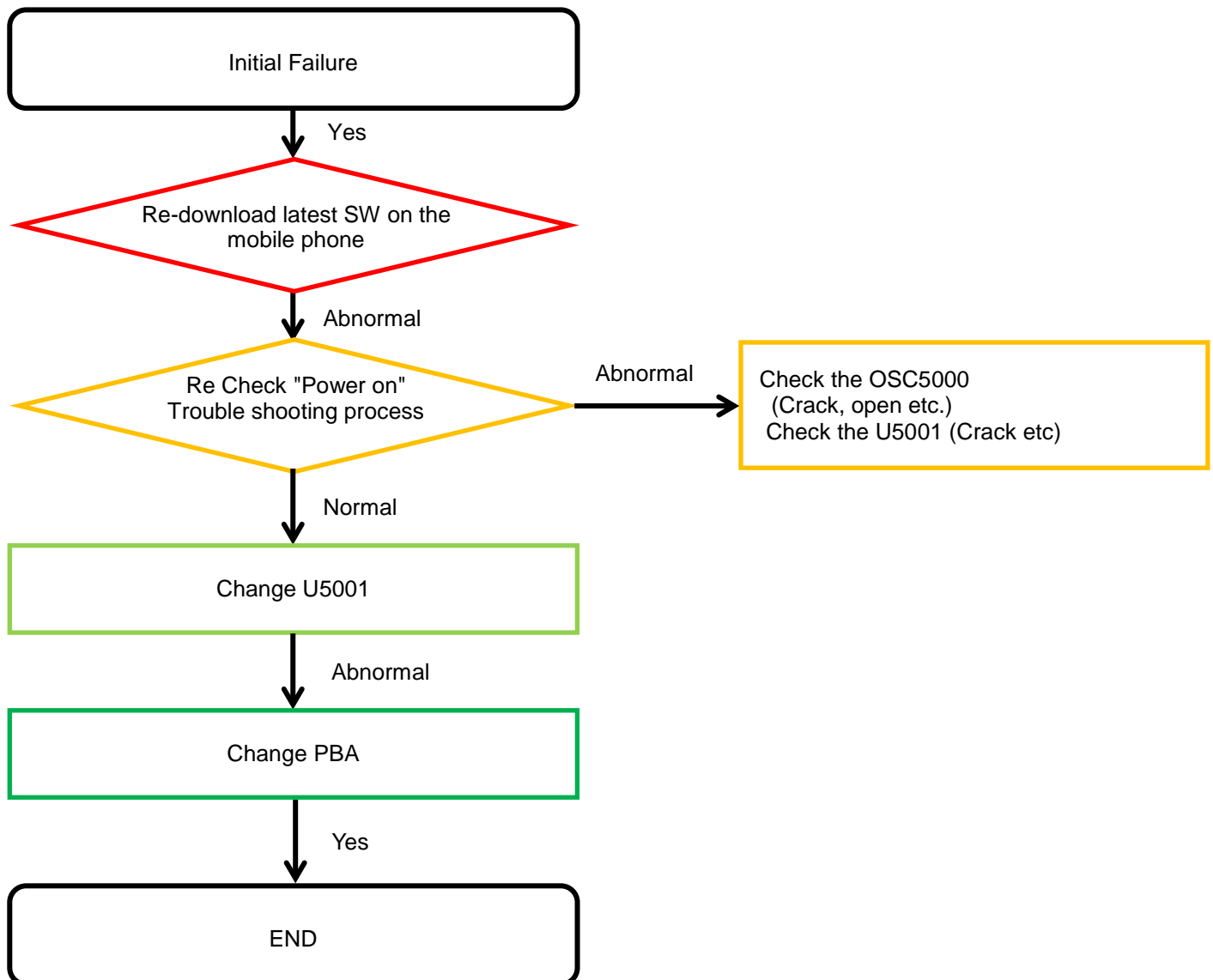


---

## 8. Level 3 Repair

---

### 8-4-2. Initial

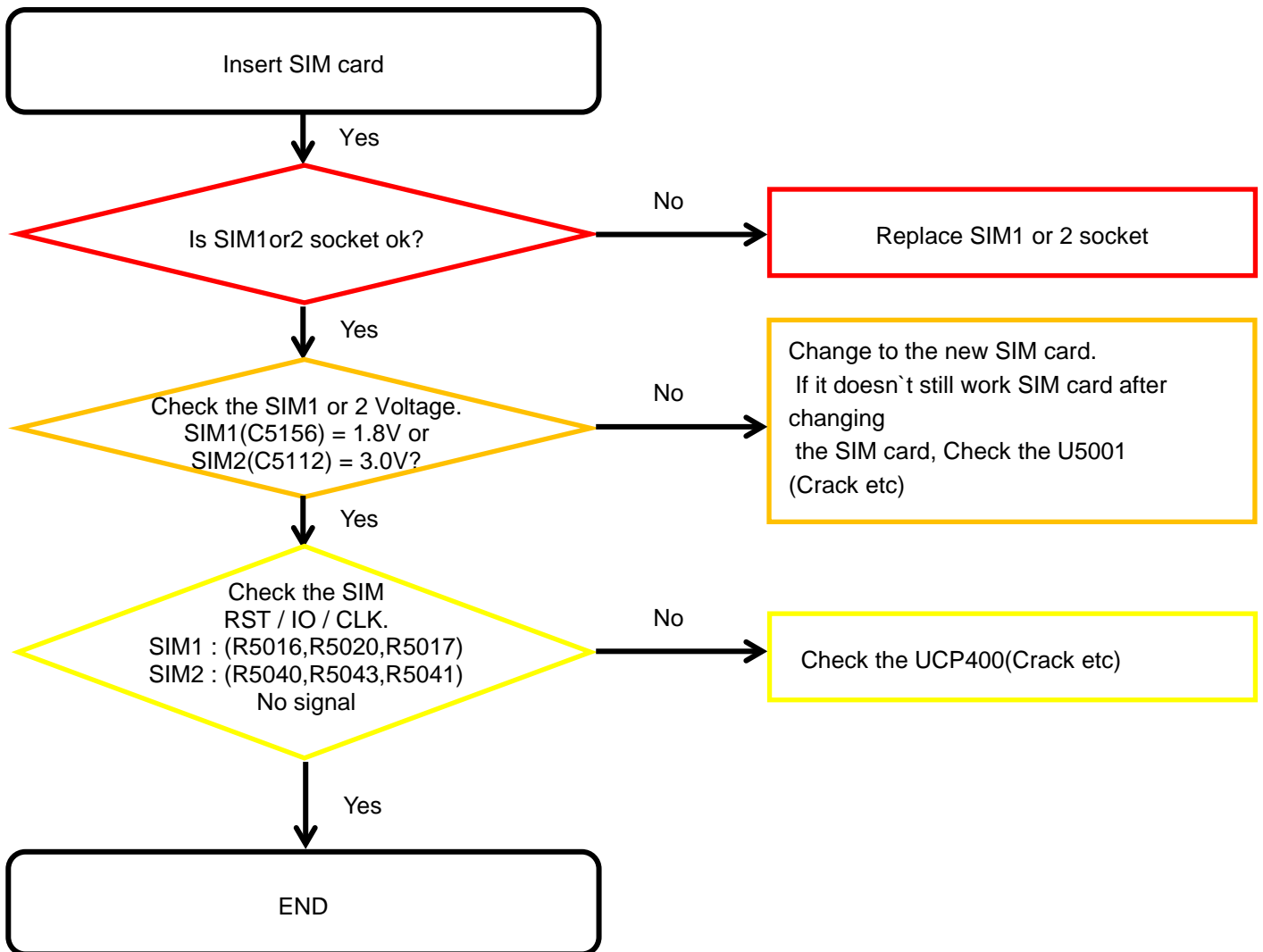


---

## 8. Level 3 Repair

---

### 8-4-3. SIM Part

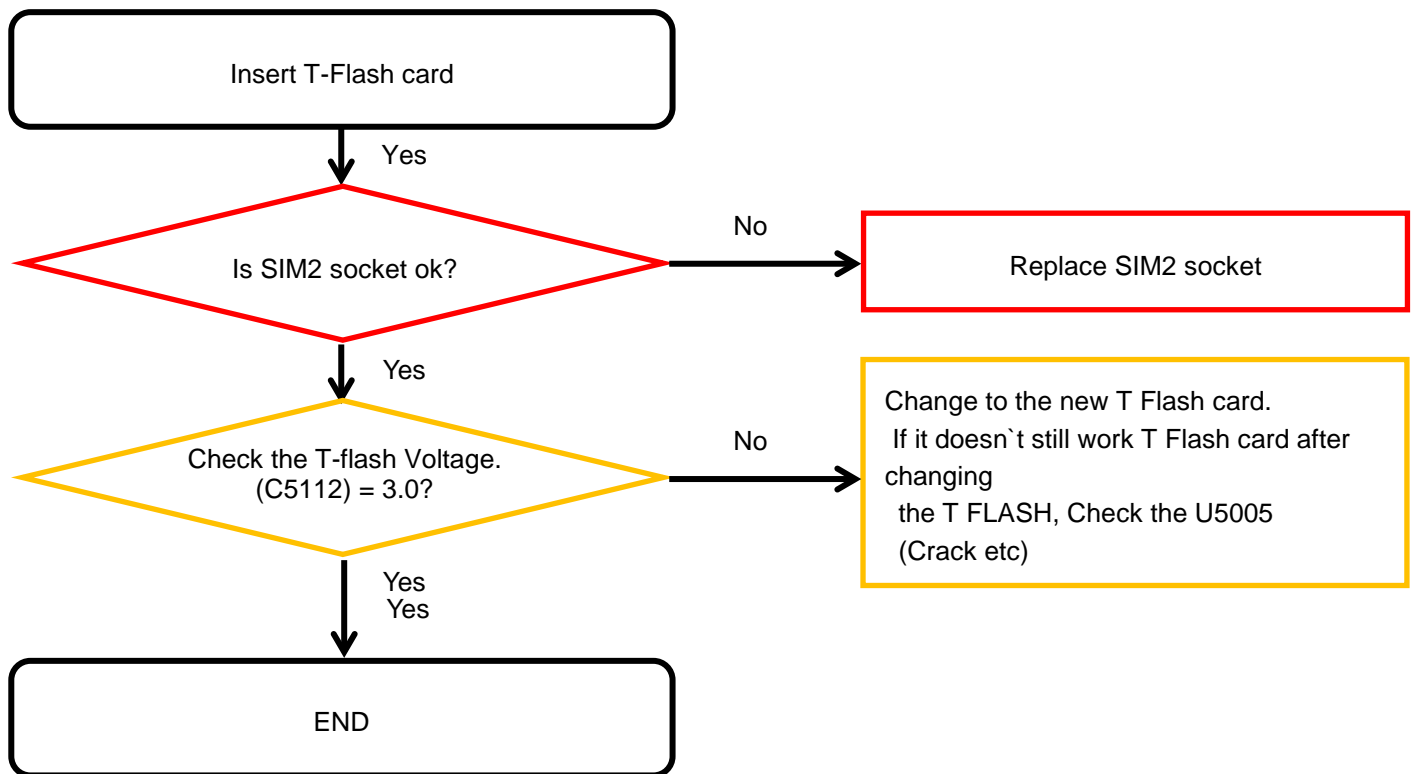


---

## 8. Level 3 Repair

---

### 8-4-4. T-Flash Part

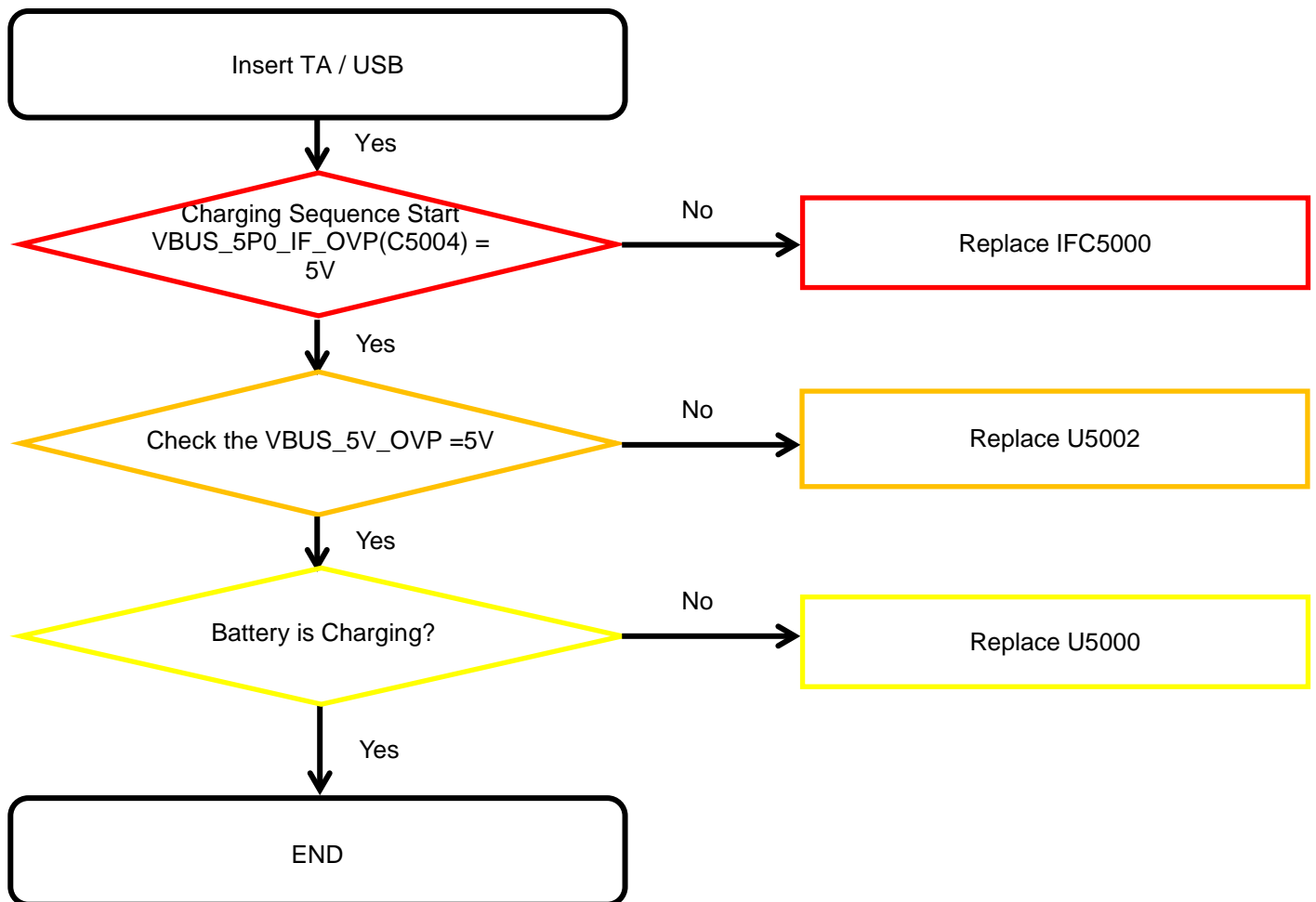


---

## 8. Level 3 Repair

---

### 8-4-5. Charging Part



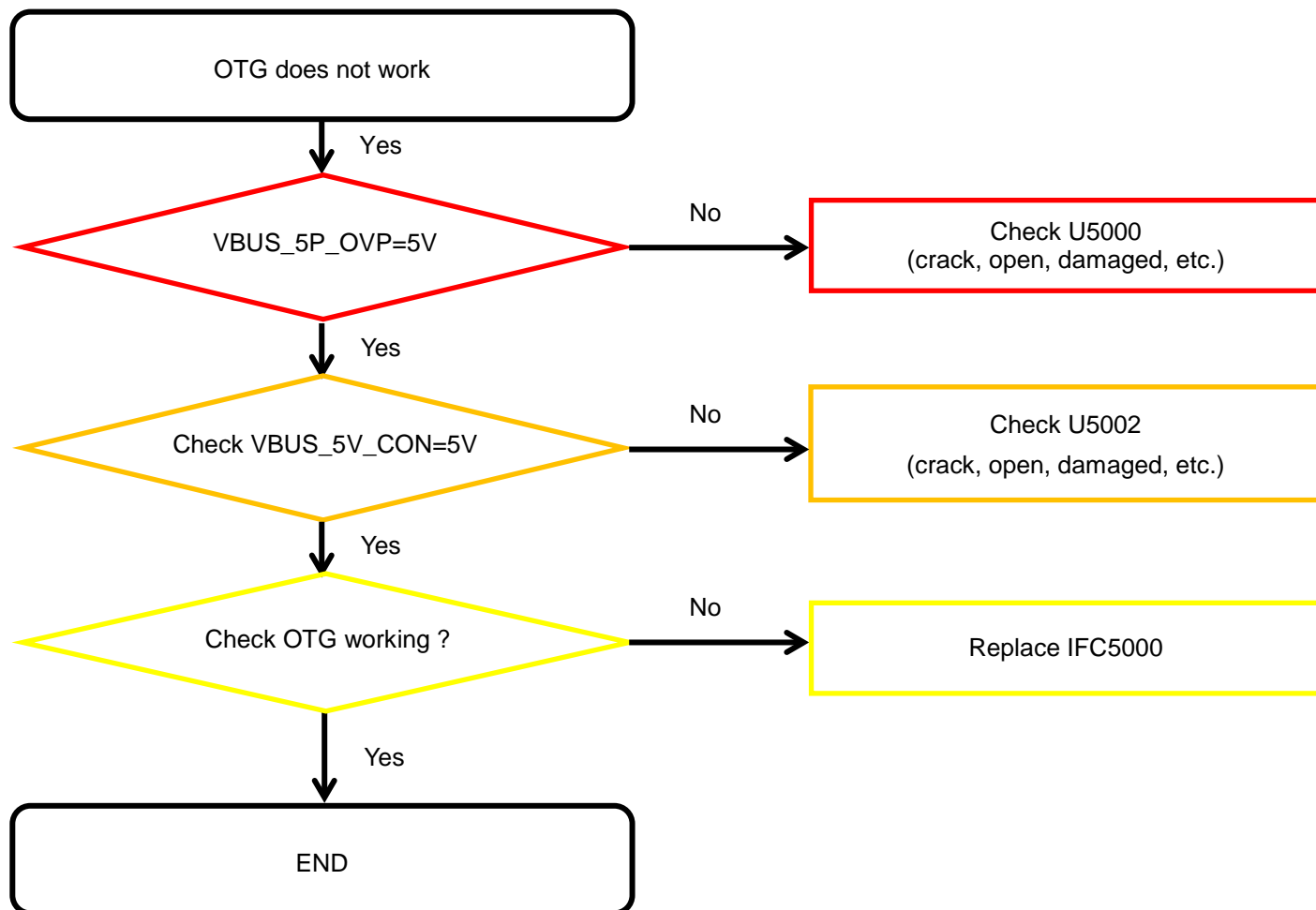


---

## 8. Level 3 Repair

---

### 8-4-6. OTG

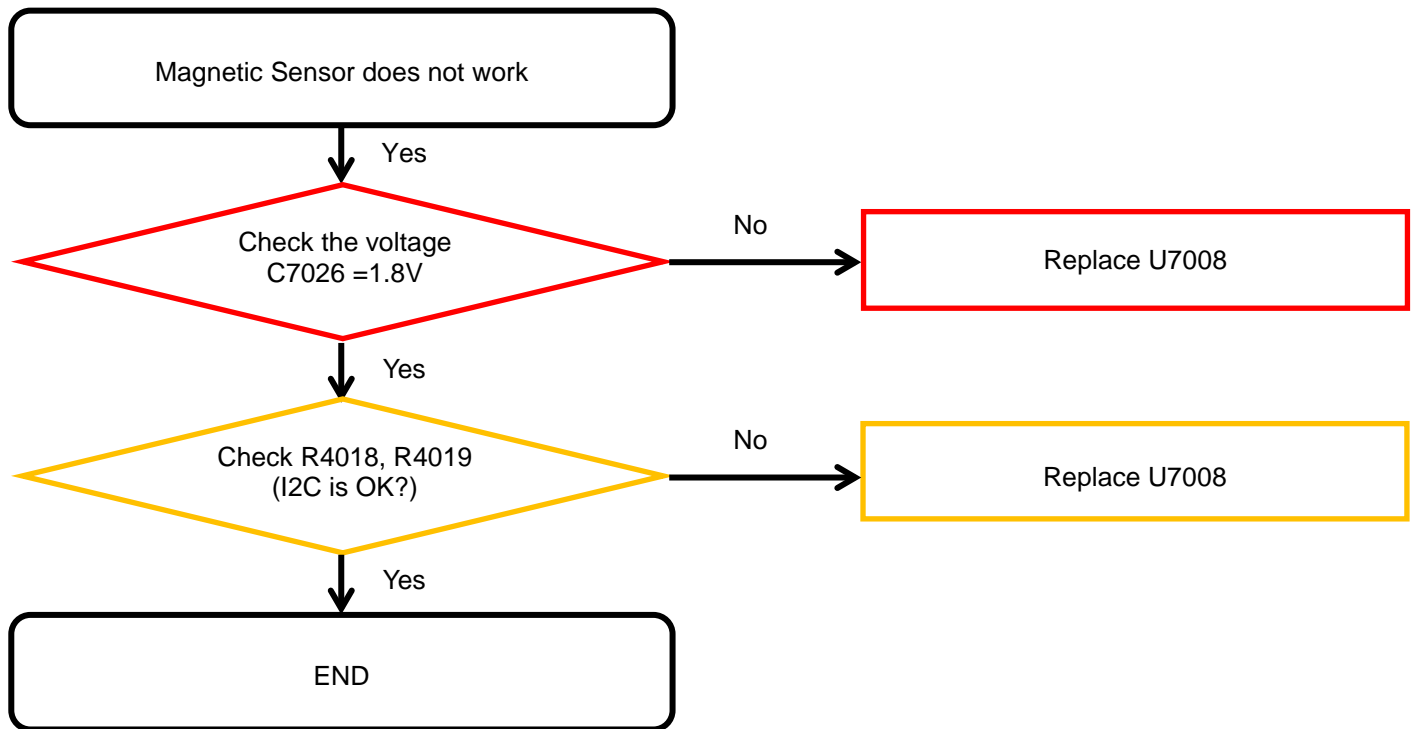


---

## 8. Level 3 Repair

---

### 8-4-7-1. Magnetic Sensor

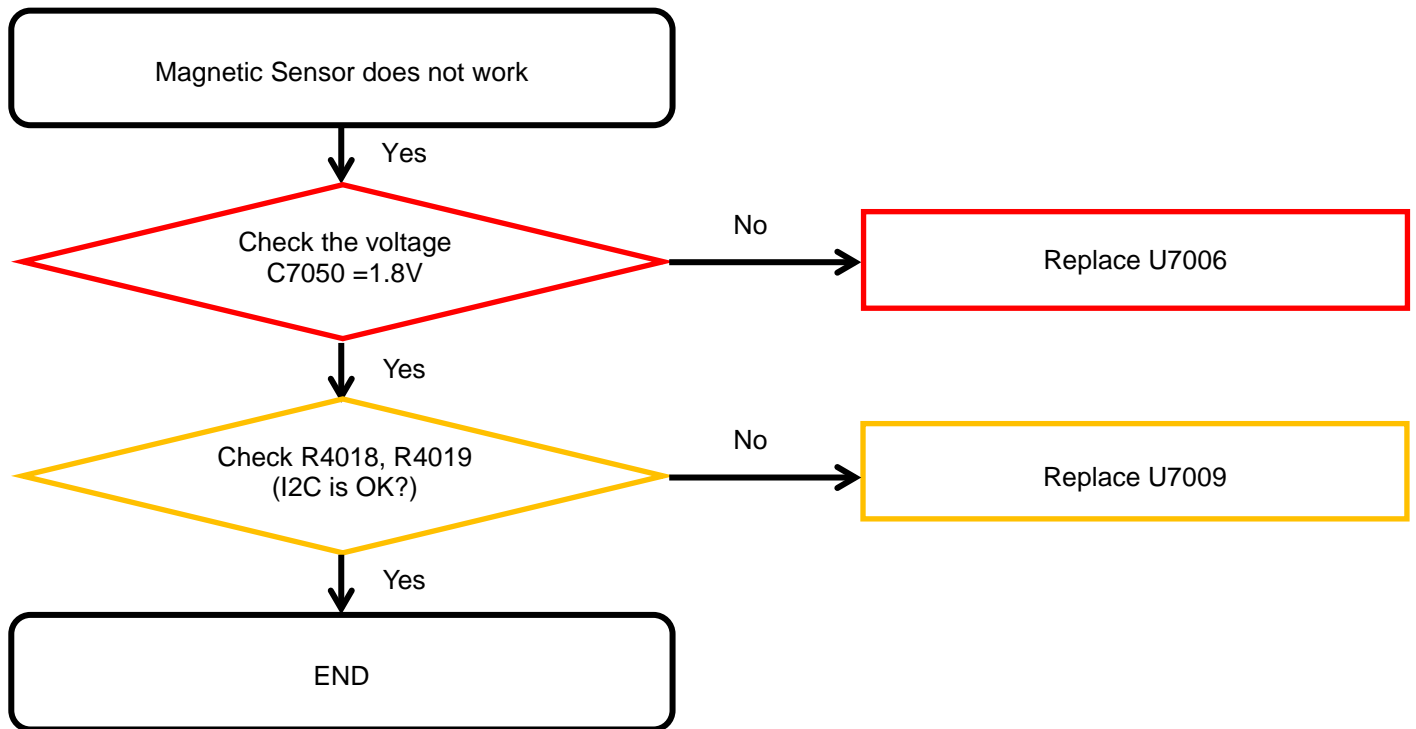


---

## 8. Level 3 Repair

---

### 8-4-7-2. Accel & GYRO Sensor

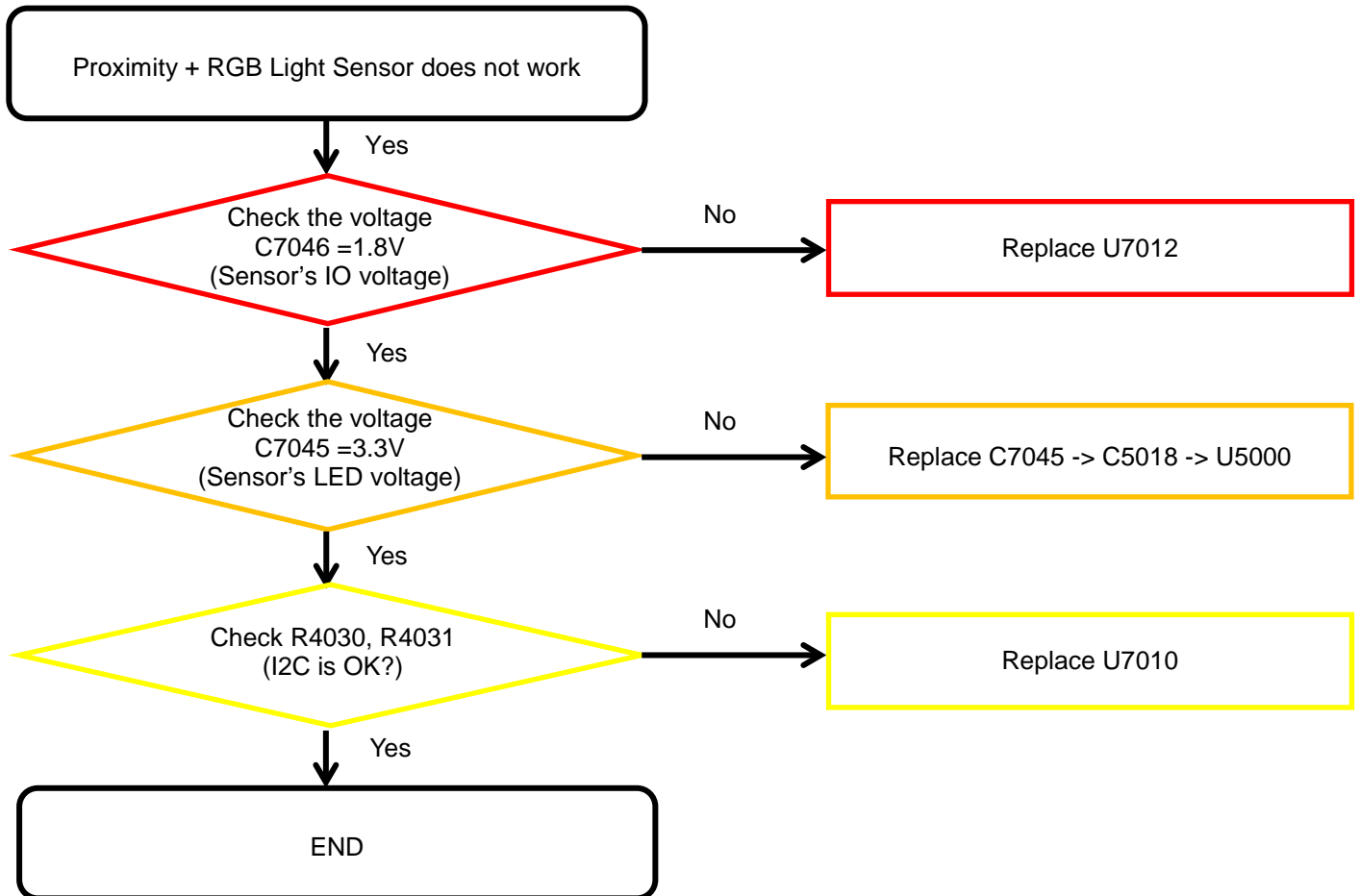


---

## 8. Level 3 Repair

---

### 8-4-7-3. Proximity + RGB Light sensor

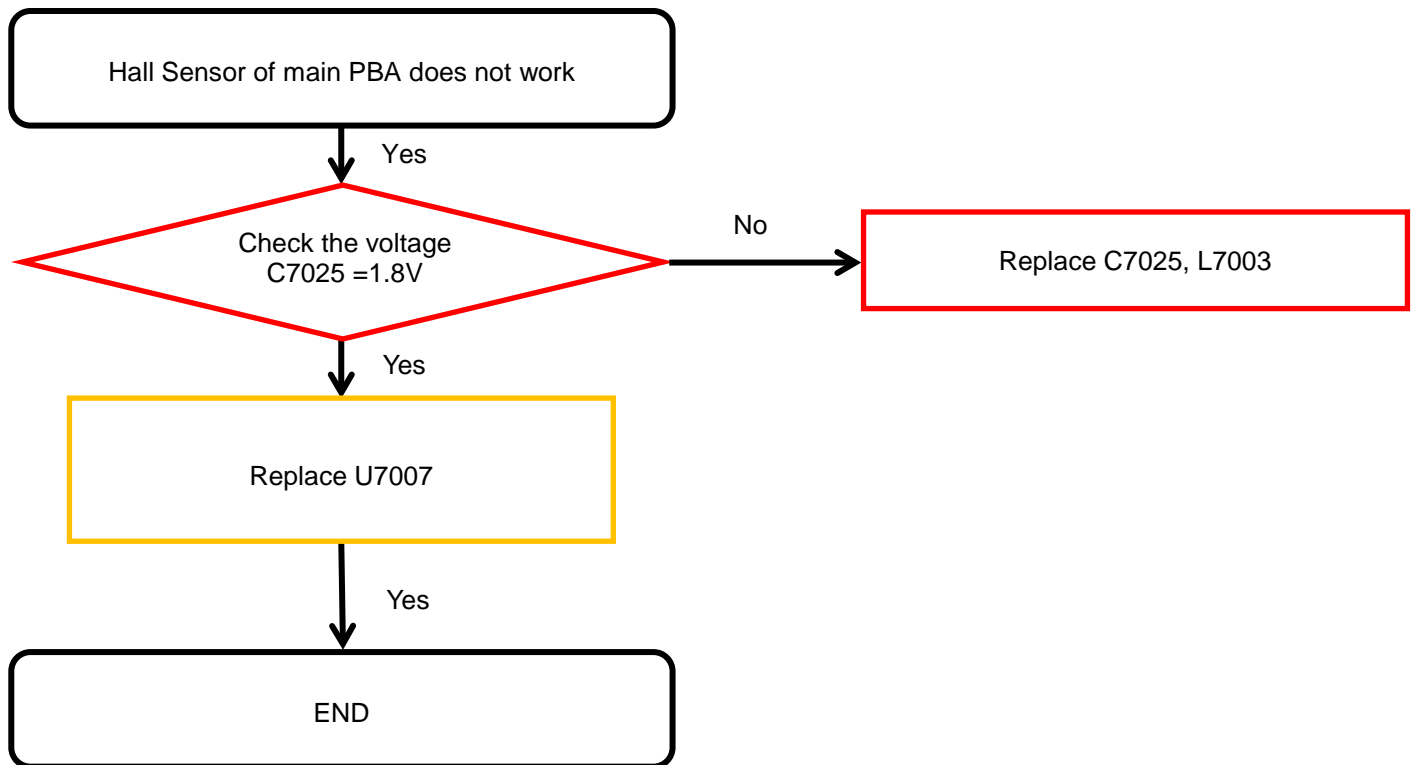


---

## 8. Level 3 Repair

---

### 8-4-7-4. Hall Sensor

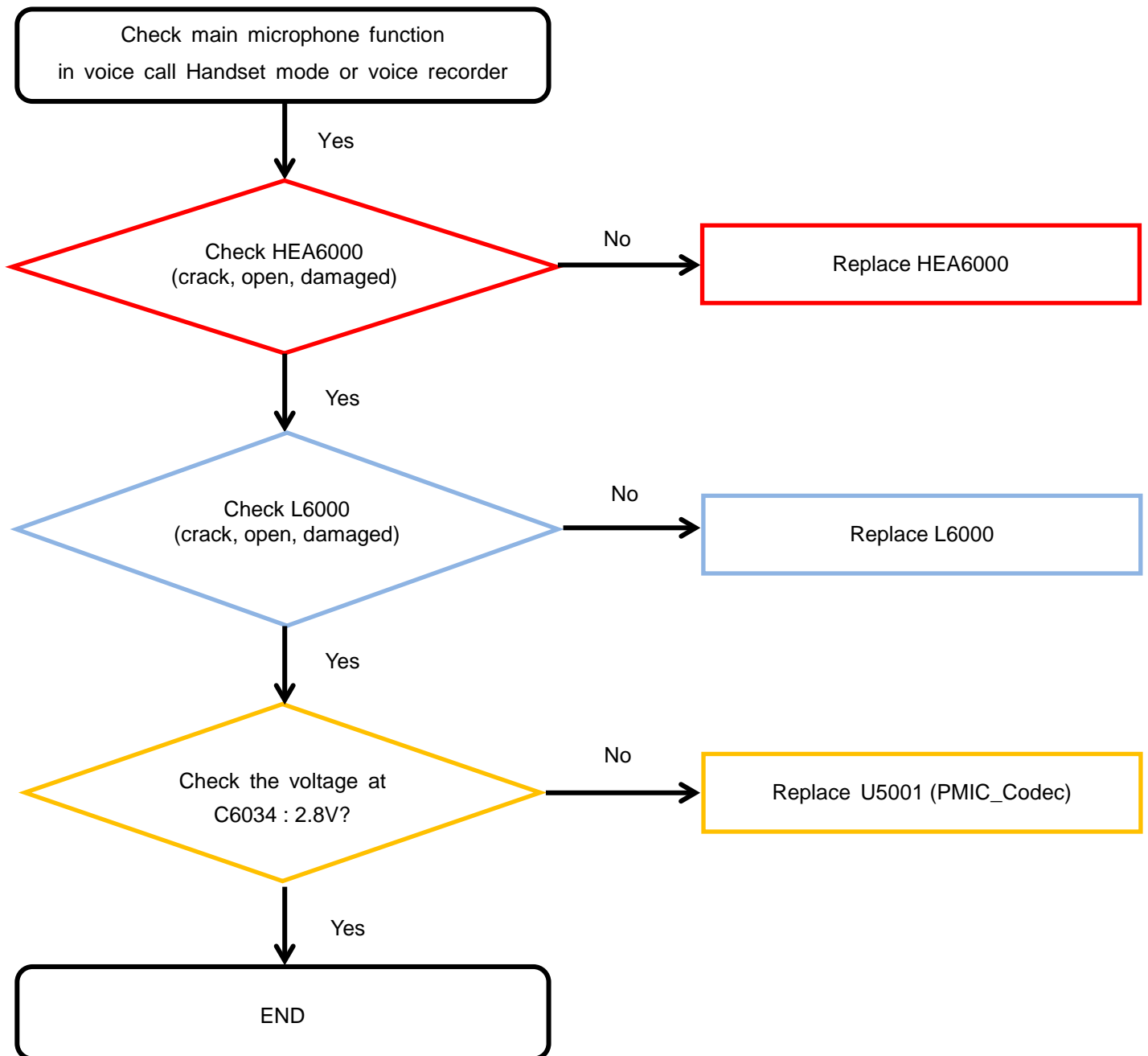


---

## 8. Level 3 Repair

---

### 8-4-8. Microphone Part - Main MIC

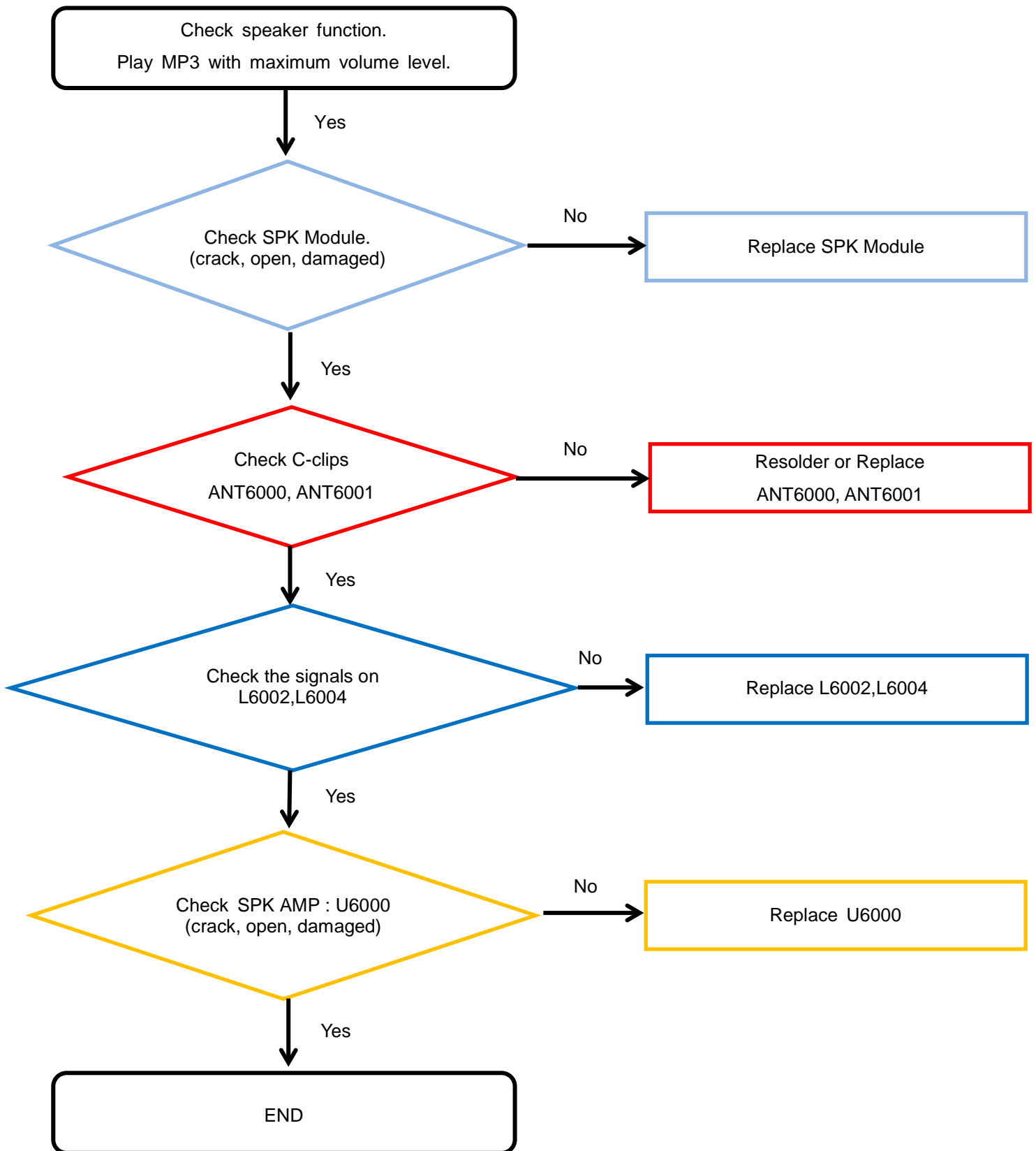


---

## 8. Level 3 Repair

---

### 8-4-9. Speaker Part

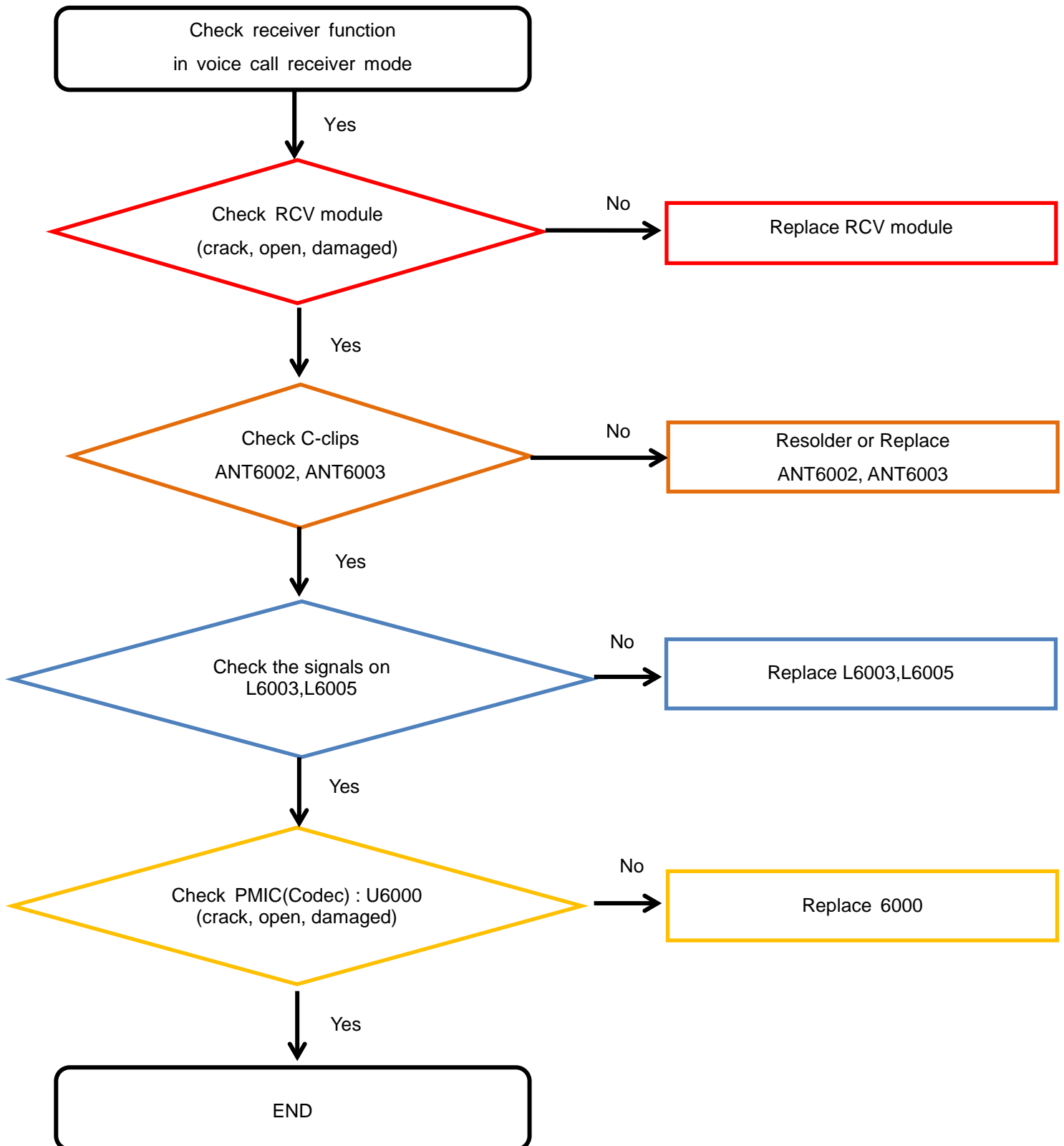


---

## 8. Level 3 Repair

---

### 8-4-10. Receiver Part



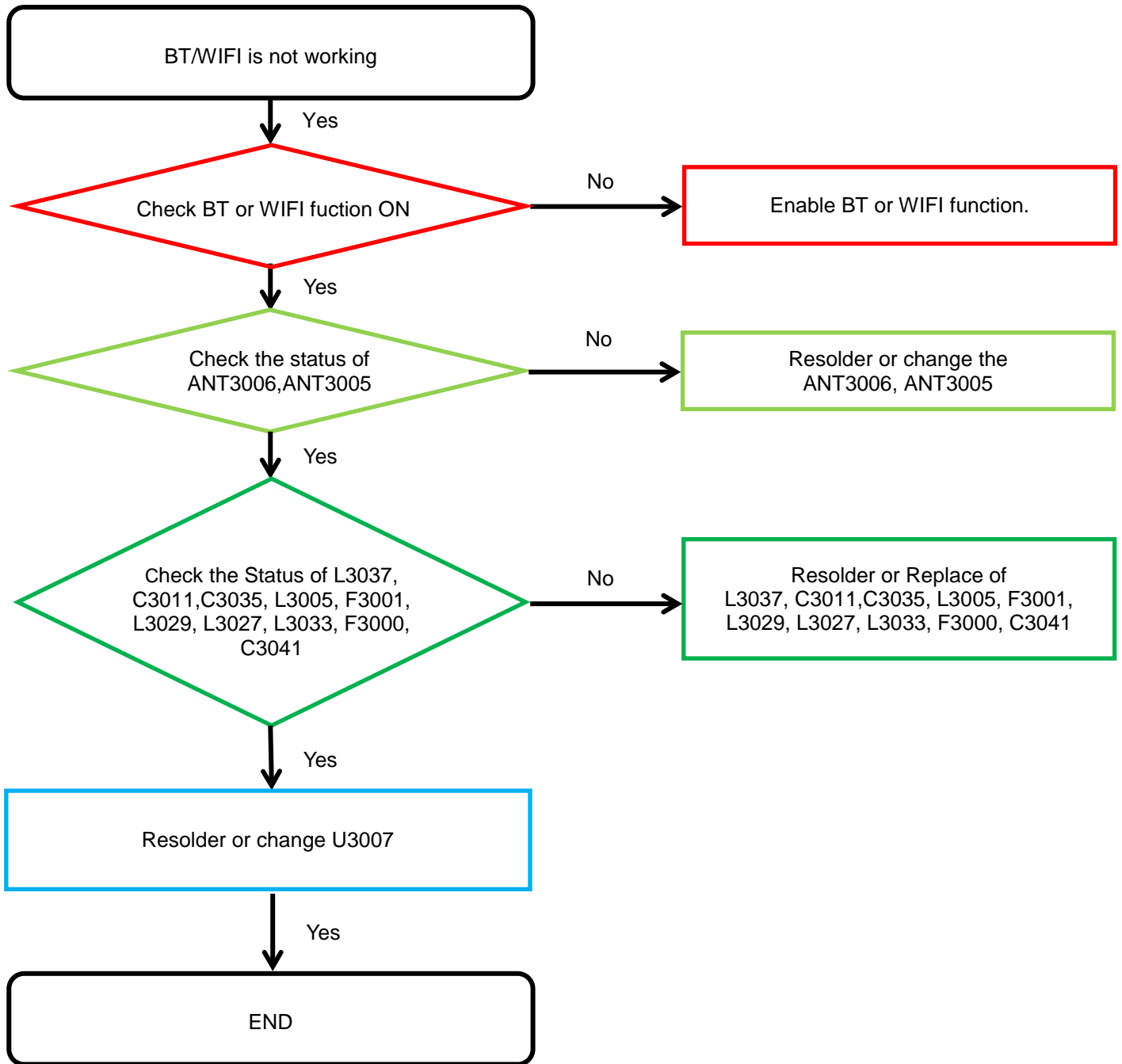


---

## 8. Level 3 Repair

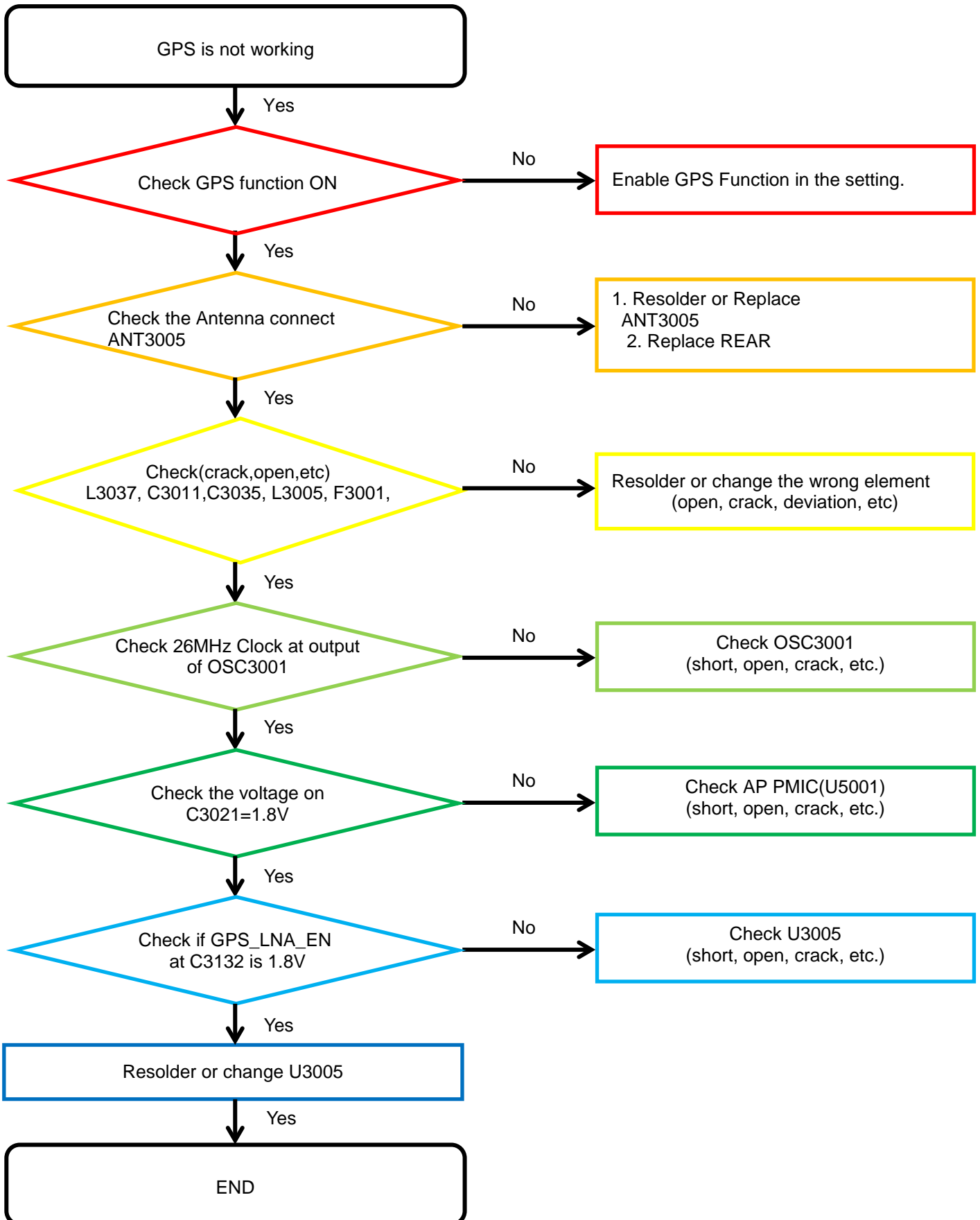
---

### 8-4-11. BT/WIFI



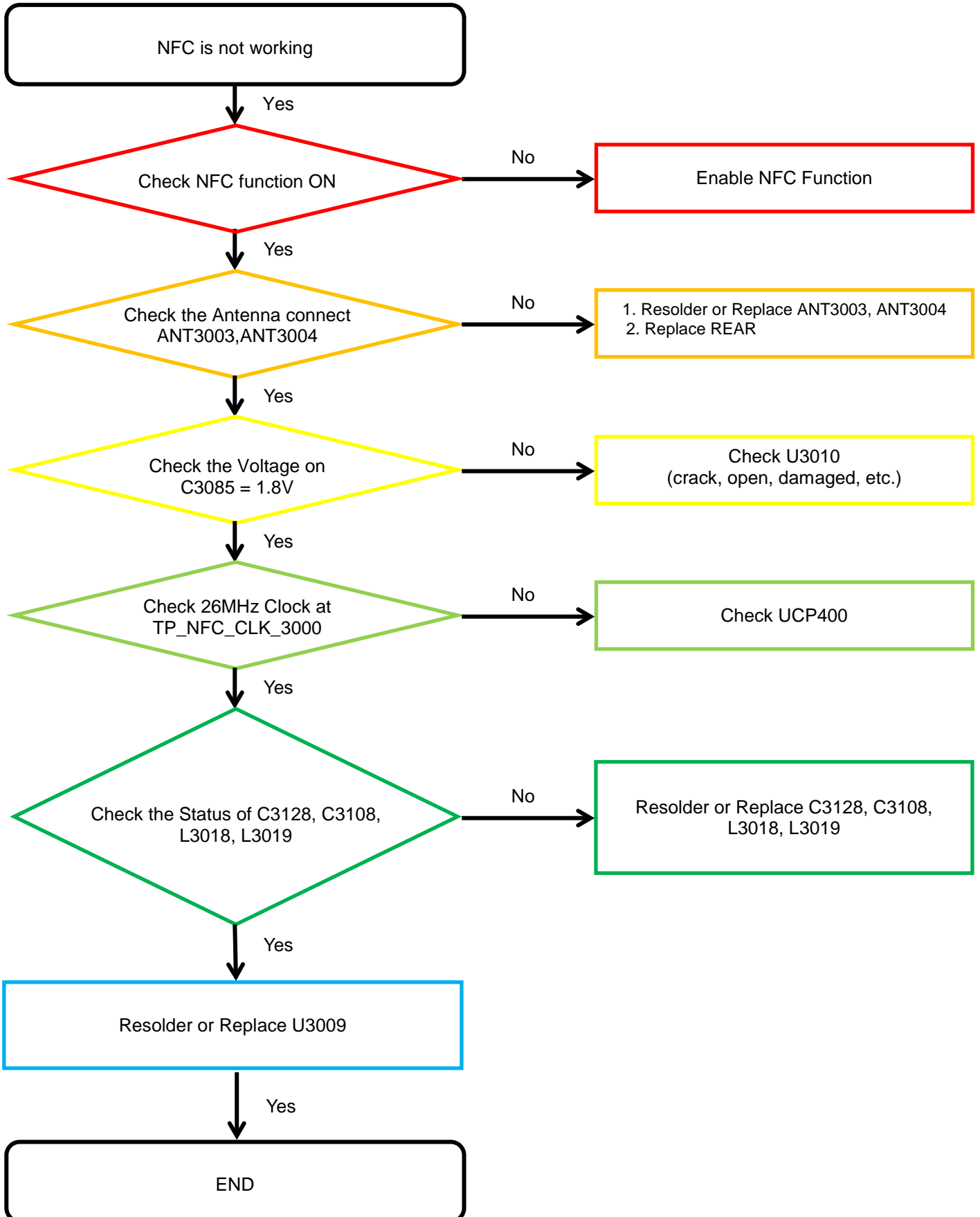
## 8. Level 3 Repair

### 8-4-12. GPS



## 8. Level 3 Repair

### 8-4-13. NFC

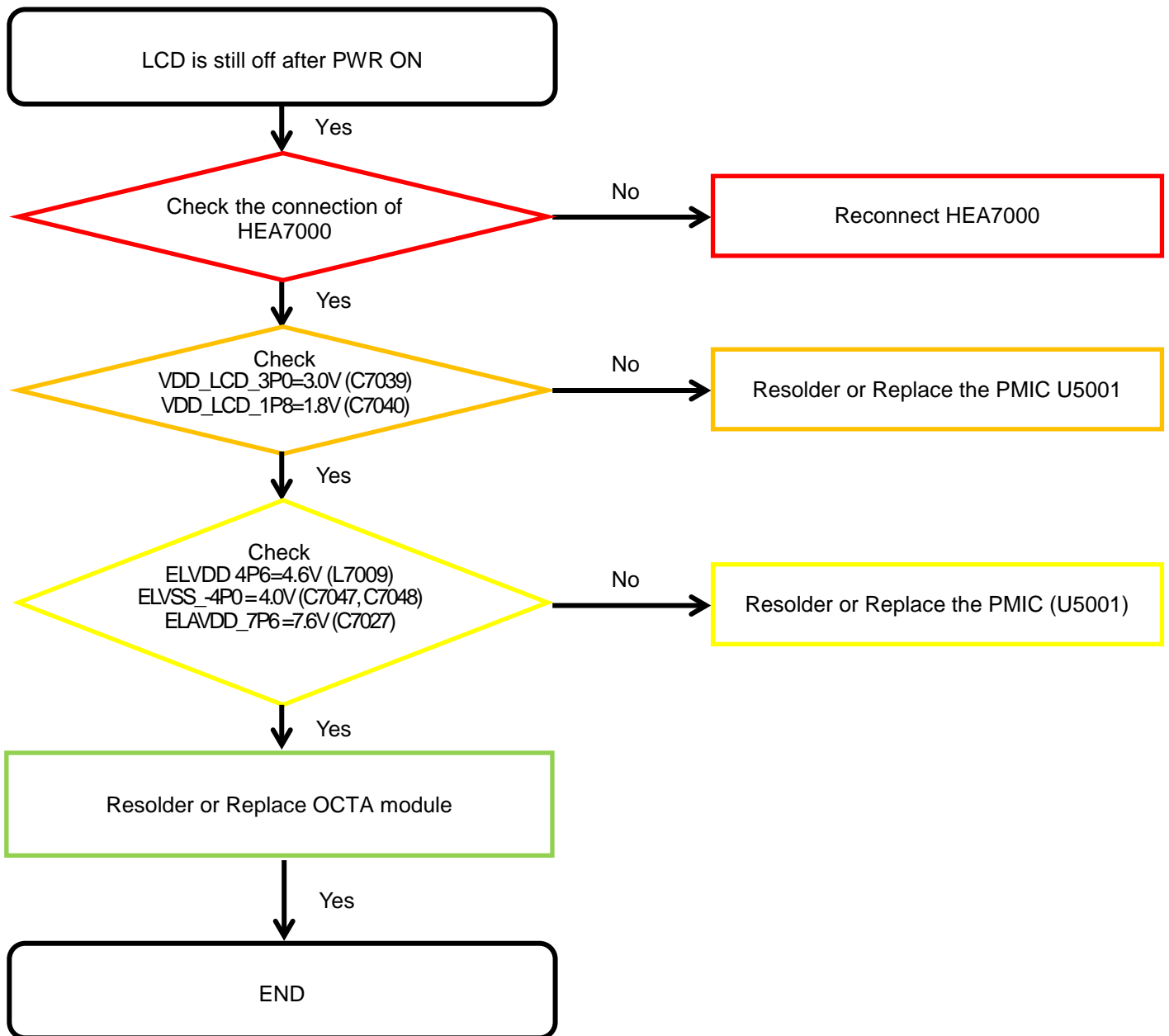


---

## 8. Level 3 Repair

---

### 8-4-14. Display

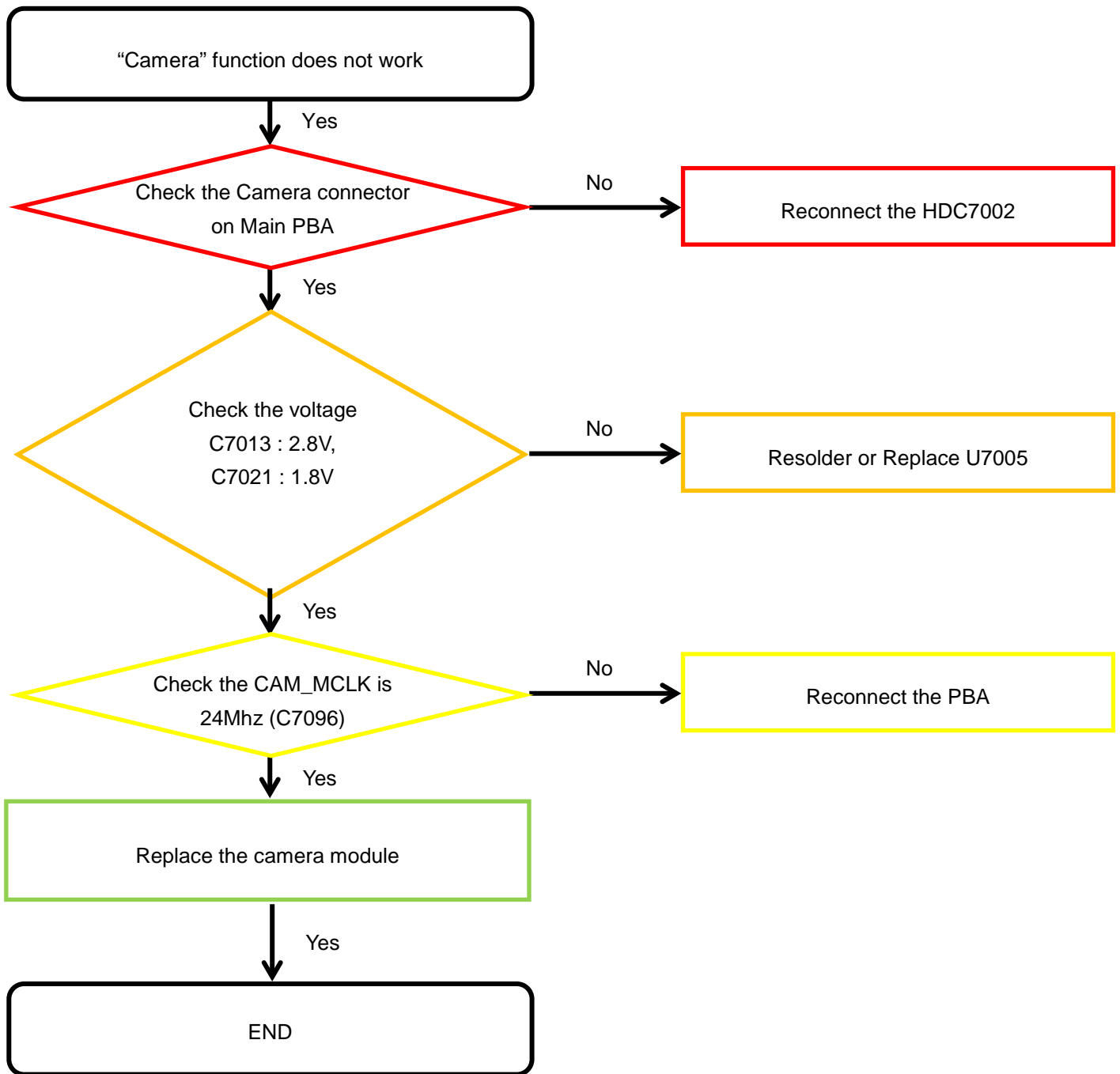


---

## 8. Level 3 Repair

---

### 8-4-15. Rear CAMERA

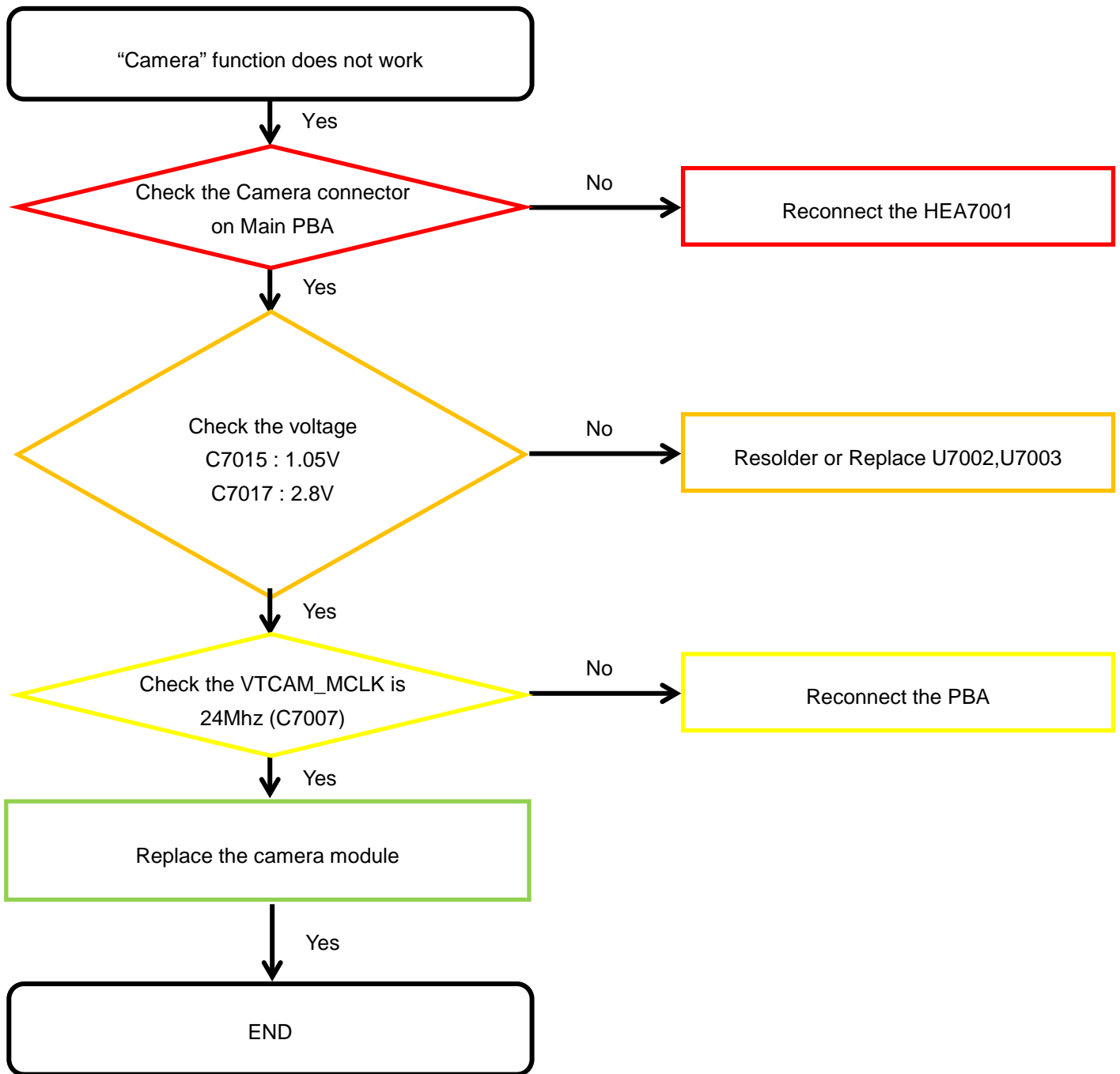


---

## 8. Level 3 Repair

---

### 8-4-16. Front CAMERA

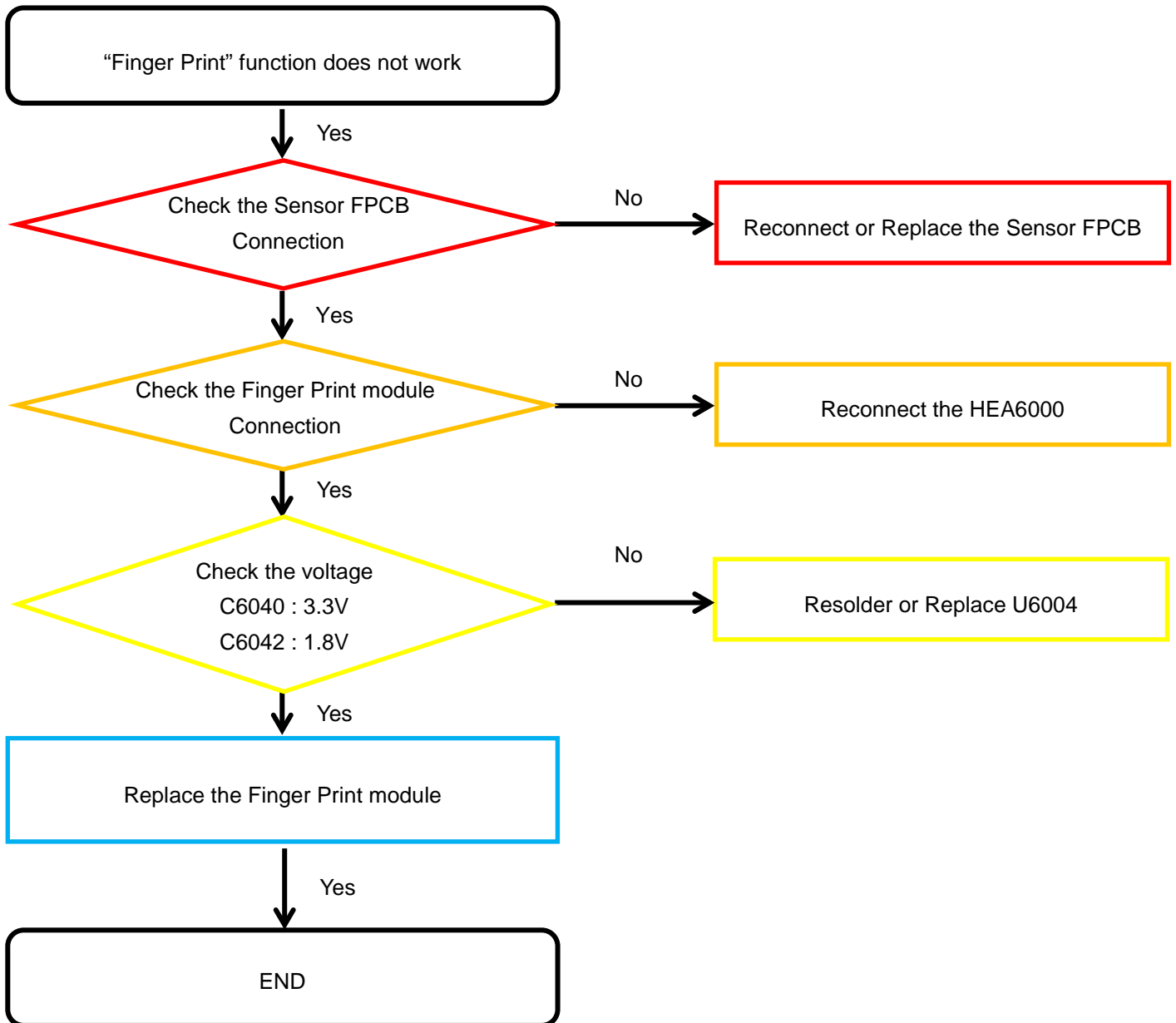


---

## 8. Level 3 Repair

---

### 8-4-17.Finger Print



---

## 8. Level 3 Repair

---

### 8-4-18. Motor

